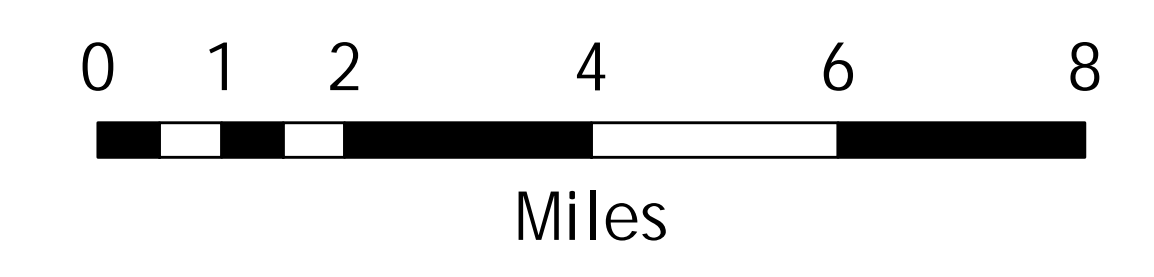
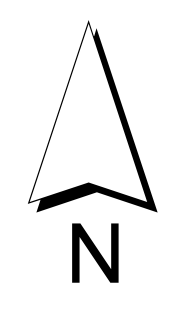
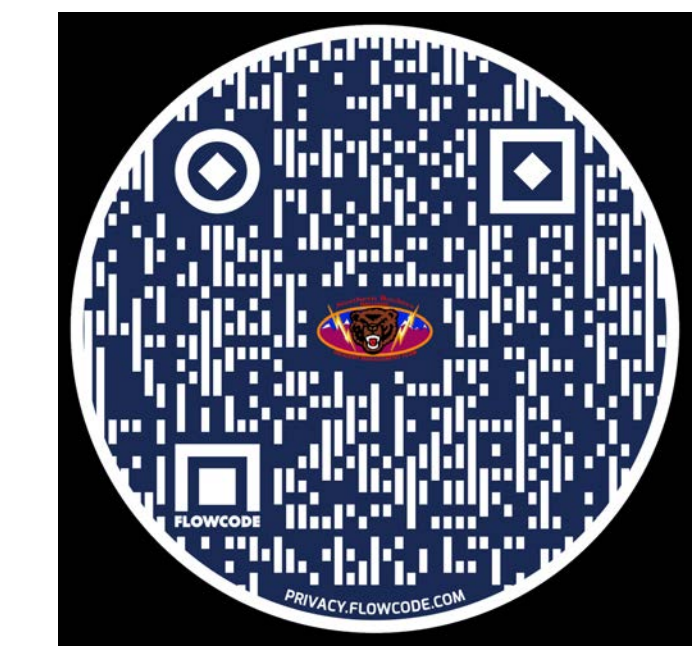
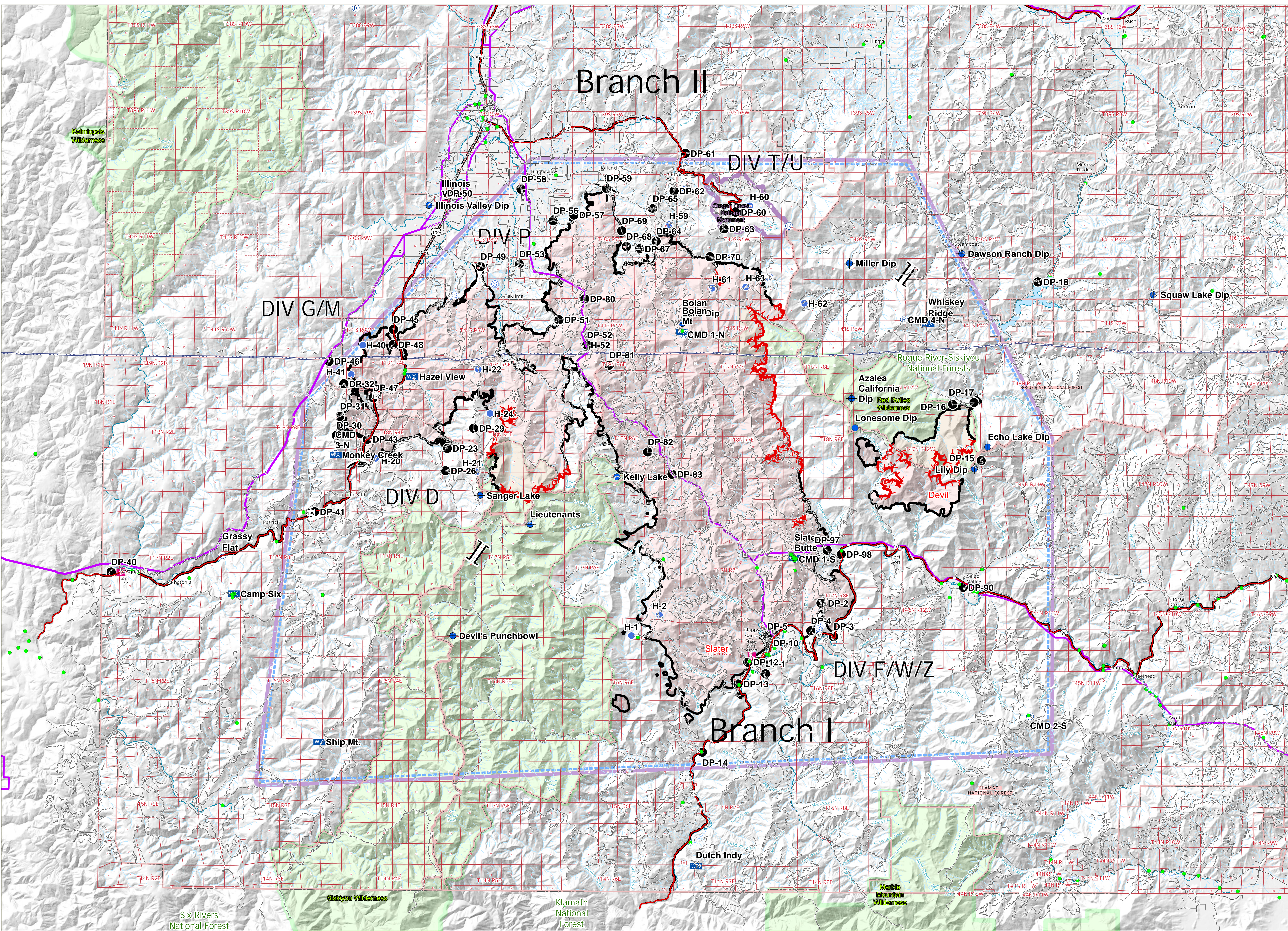


Slater Fire CA-KNF-007035 Air Operations Map

October 24, 2020
Slater: 156,666 Acres
Devil: 8,885 Acres
20:30 10/22

- Aviation obstacles
- Powerlines
- C Camp
- ◆ Dip Site
- Drop Point
- Helispot
- WX Mobile Weather Unit
- R Repeater
- S Staging Area
-) (Division Break
- } { Branch Break
- Uncontrolled Fire Edge
- Contained Line
- TFR
- Oregon Caves National Monument



FeatureCategory	Label	Lat	Long	Feature	Label	Type	Elevation	Comments	Lat	Long
Dip Site	Azalea California Dip	41° 58.207' N	123° 18.035' W	Helispot	H-1	T3	5700'		41° 48.233' N	123° 30.306' W
Dip Site	Lonesome Dip	41° 56.976' N	123° 17.838' W	Helispot	H-2	T3	5100'		41° 49.113' N	123° 28.754' W
Dip Site	Devil's Punchbowl	41° 48.185' N	123° 40.298' W	Helispot	H-20	T3	2400'	Avoid weeds - Himalayan blackberry	41° 55.574' N	123° 44.711' W
Dip Site	Lieutenants	41° 52.864' N	123° 36.020' W	Helispot	H-21	T3	5900'		41° 55.048' N	123° 39.032' W
Dip Site	Kelly Lake	41° 54.880' N	123° 31.179' W	Helispot	H-22	T2	4000'		41° 59.343' N	123° 38.993' W
Dip Site	Dawson Ranch Dip	42° 4.278' N	123° 11.881' W	Helispot	H-24	T3			41° 57.492' N	123° 38.312' W
Dip Site	Echo Lake Dip	41° 56.190' N	123° 10.399' W	Helispot	H-40	T3	3000'		42° 0.310' N	123° 45.485' W
Dip Site	Miller Dip	42° 3.867' N	123° 18.194' W	Helispot	H-41	T3	3500'		41° 59.075' N	123° 46.110' W
Dip Site	Squaw Lake Dip	42° 2.573' N	123° 1.125' W	Helispot	H-52	T2	4200'	Paved, no hazards, power line to the West	42° 0.381' N	123° 32.904' W
Dip Site	Lily Dip	41° 55.280' N	123° 11.149' W	Helispot	H-59	T3	3000'	needs dust abatement	42° 5.445' N	123° 28.340' W
Dip Site	Bolan Lake Dip	42° 1.319' N	123° 27.569' W	Helispot	H-60	T2	4800'		42° 6.251' N	123° 23.809' W
Dip Site	Illinois Valley Dip	42° 6.187' N	123° 41.827' W	Helispot	H-61	T2	4200'		42° 2.794' N	123° 25.899' W
Dip Site	Sanger Lake	41° 54.060' N	123° 38.843' W	Helispot	H-62	T3	5200'		42° 2.178' N	123° 20.719' W
				Helispot	H-63	T2	5500'	needs dust abatement	42° 2.852' N	123° 24.009' W

*Klamath River approved for dipping AVOID INLETS 300' either side.

