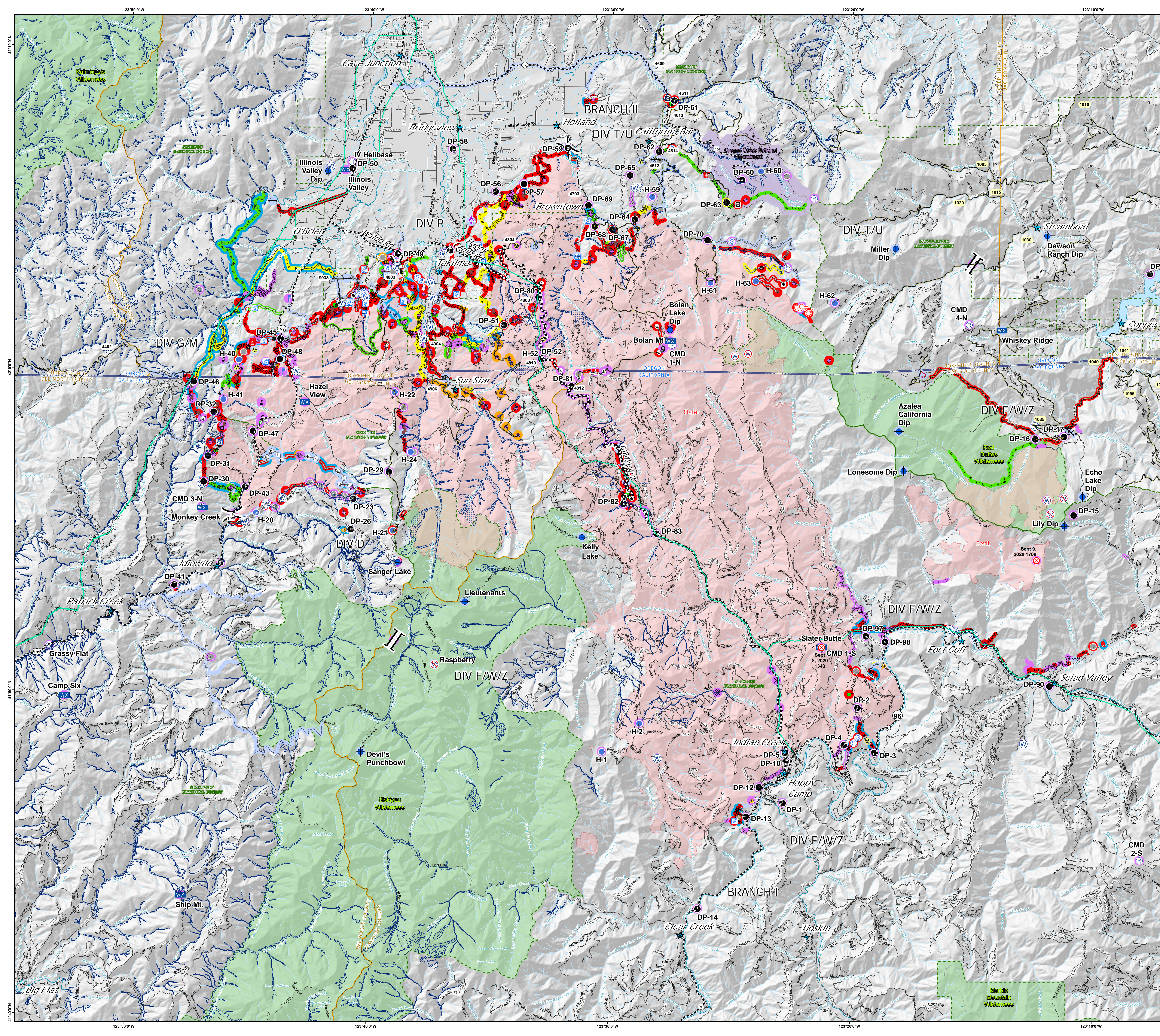


Slater Fire CA-KNF-007035 Devil Fire CA-KNF-007084

Repair Map
October 24, 2020
Slater: 156,666 Acres
Devil: 8,885 Acres
IR Flight 20:30 10/22



- | | | | |
|--|---------------------------------|--|----------------------------------|
| | Aerial Hazard | | Completed - Inspected |
| | Bridge | | In Use - Fire Management |
| | Camp | | Completed - Ready for Inspection |
| | Clean Up Area | | In Progress |
| | Closure | | Repair Needed |
| | Culvert | | No Repair Needed |
| | Dip Site | | Other - See Comments |
| | Drop Point | | Unknown |
| | Dozer Push | | Completed - Inspected |
| | Fence - Cut/Damaged | | In Use - Fire Management |
| | Fire Origin | | Completed - Ready for Inspection |
| | Hazard | | In Progress |
| | Hazard Tree | | Repair Needed |
| | Helibase | | No Repair Needed |
| | Helispot | | Other - See Comments |
| | Landmark | | Unknown |
| | Landing or Log Deck | | Completed - Inspected |
| | Lookout | | In Use - Fire Management |
| | Mobile Weather Unit | | Completed - Ready for Inspection |
| | Repair Point | | In Progress |
| | Repeater | | Repair Needed |
| | Resource Location | | No Repair Needed |
| | Road Repair | | Other - See Comments |
| | Safety Zone | | Unknown |
| | Spot Fire | | Completed - Inspected |
| | Staging Area | | In Use - Fire Management |
| | Stream Crossing | | Completed - Ready for Inspection |
| | Structure Wrap | | In Progress |
| | Water Source | | Repair Needed |
| | Restricted Water Source | | No Repair Needed |
| | Water Development or Draft Site | | Other - See Comments |
| | Value at Risk | | Unknown |
| | Other | | Completed - Inspected |

) (Division Break
|| Branch Break

