

Slater & Devil Incidents

Incident Action Plan

Sunday, October 18, 2020 (0700 – 1900)

CA-KNF-007035 (P5NKM3)

NOTES:

This QR Code provides access to IAP, Incident Maps, Briefings, Electronic Forms & the Check-in /swaps process



Happy Camp Highway Road Closure Schedule

0900-1200 CLOSED
1200-1300 Open
1300-1700 CLOSED
1700-0900 (next day) Open

http://linktr.ee/Slater_Incident

ICP Address: 735 Southeast 6th Street, Grants Pass, OR 97526

24 hour Communication Line: 541-423-2631



INCIDENT OBJECTIVES	1. Incident Name Slater & Devil Fires	2. Date Prepared 10/17/2020	3. Time 2000
----------------------------	---	---------------------------------------	------------------------

4. Operational Period
Day Operations Sunday, October 18, 2020 0700 – 1900

5. **Commander's Intent:**

It is my expectation that we, as an organization, will meet the following Leader's Intent as well as the objectives identified below:

- Ensure all incident strategies and actions reflect a commitment to public, responder, and aviation safety through use of the risk management process as outlined in the IRPG and the aviation risk assessment process.
- Coordinate incident management activities with our requesting and cooperating agencies including but not limited to suppression actions and support needs.
- Treat all incident personnel, cooperators, and local publics with dignity and respect creating a "no tolerance" atmosphere for harassment, alcohol, or illegal drug use.

Values of Concern:

- Neighboring communities and private residences in California and Oregon.
- Critical communication and utility infrastructure including high power transmission lines, DOD/AT&T fiber optic cable, communication sites and repeaters.
- Highway 199 providing a main thoroughfare for inland and coastal areas of Southern Oregon and Northern California.
- Many historic, natural, cultural and recreational values within the fire area including historic buildings and multiple T&E species.
- Economic values impacted by area closures.

Management Objectives:

- Provide for emergency personnel and public safety at all times through the utilization of a deliberate risk-informed approach, with avenues for feedback from personnel. Also, ensure COVID-19 precautions and best practices are met by following agency, team and county guidance.
- Reduce the impacts of fire on communities, major infrastructure and private lands.
- Foster and maintain relationships with the public, cooperators and stakeholders.
- Ensure coordinated, timely and accurate release of public information. When possible utilize virtual platforms.
- Maintain fiscal accountability by making good risk-informed decisions.
- All personnel assigned should receive evaluations prior to leaving the incident.

Operational Objectives:

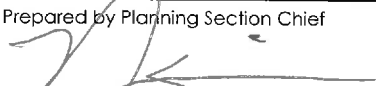
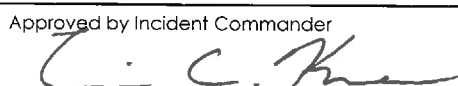
- Under the full suppression strategy, utilize direct and indirect tactics to minimize fire size. As feasible utilize minimum impact suppression tactics within the Red Buttes and Siskiyou Wilderness areas.
- Protect the values of concern identified above by suppressing the wildfire and utilizing point protection of structures when necessary.
- Scout, recon and identify primary and alternate containment opportunities considering resource availability and probability of success.
- Work collaboratively to refine and implement the population protection plan when necessary.
- Coordinate with Lead Resource Advisor, including the Karuk Tribe representative, and operational Resource Advisors to minimize natural and cultural resource damage.
- Provide initial attack support with both air and ground resources, if requested, for all cooperating agencies in the area under the Temporary Flight Restriction.
- Secure lines and mop-up to the level necessary based on site conditions associated with the values at risk to make the likelihood of escape minimal considering current/predicted weather conditions.
- Coordinate with resources advisors and technical specialists to prioritize, initiate, and complete fire suppression repair as specified in the suppression repair plan.

6. Weather Forecast for Period
See Attached Weather Forecast.

7. General Safety Message
Continue to drive defensively. Note the Happy Camp Highway closure schedule.

8. Attachments (mark if attached)

X	Organization List – ICS 203	X	Air Operation – ICS 220	X	Safety Messages / Traffic Control
X	Div. Assignment Lists – ICS 204	X	Weather Forecast	X	READ, Logistics, Finance Messages
X	Communications Plan – ICS 205	X	Fire Behavior	X	Incident Maps
X	Medical Plan – ICS 206WF w/ 8 Line	X	Phone List – ICS 205A	X	Unit Log

Prepared by Planning Section Chief 	Approved by Incident Commander 
--	--

ORGANIZATION ASSIGNMENT LIST		
1. Incident Name Slater & Devil Fires		
2. Date Prepared October 17, 2020	3. Time 2000	
4. Operational Period October 18, 2020 Day 0700-1900		
Position	Name	
5. Incident Commander and Staff:		
Incident Commander	Eric Knerr / Brent Meisinger (T)	
Safety Officer	Matt Broyles	
Information Officer	Jennifer O'Leary	
Liaison	Donald Jordan	
Health Liaison	Brad Henning	
6. Agency Representatives		
Agency / Organization	Name	
USFS – Klamath NF	Kris Sexton	
USFS – Rogue-Siskiyou NF	Merv George	
USFS – Six Rivers NF	Ted McArthur	
Smith River NRA	Jeff Marszal	
Medford District BLM	Bill Dean	
Oregon Dept. of Forestry	Tyler McCarty	
Bureau of Indian Affairs	John Mosley	
Redwood NP & State Park	Steve Mietz	
Oregon Caves National Monument	Jeremy Curtis	
CAL Fire – Siskiyou Unit	Phil Anzo	
Illinois Valley Fire District	John Holmes	
Karuk Tribe Representative	Earl Crosby	
7. Planning Section		
Chief	Natalie Simrell / Mike Crawford (T)	
Resource Unit	Marlin Pose / James Berge Mary Lucas	
Situation Unit	Jessica Gallimore / Shannon Theall	
Demob / Checkin Unit	Andrew Lacey / Rachel Noonan	
Information Technology	Chuck Vertrees / Chad Funnemark	
Fire Behavior Analyst	Steve Ziel / Barry Kleckler (T)	
GIS Specialist	Aleksandar Dozic	
Resource Advisors	Samuel Commarto / Stacy Johnson	
8. Logistics Section		
Chief	Stefen Maupin / Max Yager	
	Chuck House (CAFOB) / Mike Ramsey (T)	
Security Manager	Jim Murray	
Facilities	Shelly Pacheco / Ben Goodin	
Base Camp Manager	Pete Osipovich / Athena Wade (T)	
Supply Unit	Clarence Adams	
Receiving/Distribution	Vicki Cunningham	
Ordering Manager	Kathy Sturm (T)	
Ground Support Unit	Jeff Allred / Casey Glade (T)	
Communications Unit	Todd Bellefeuille	
Medical Unit	Carl Varak	
Food Unit	Gary Edwards	

9. Operations Section		
Operations	Chris Orr / Gabe Dumm (T)	
Planning Ops	Nate LeFevre	
a. South - Division / Groups		
Branch Director I		Dave Provencio / Kit Moffitt (T)
Division/Group	F / W / Z	Paul Mondragon / Jesse Parry (T)
Division/Group	Happy Camp Highway South	Cheveyo Munk
b. North - Division / Groups		
Branch Director II		Trevor Wallace
Division/Group	D	Marvin Roybal
Division/Group	G / M	Cindi Tonasket-Ebel
Division/Group	P	Jesse Kiene
Division/Group	T / U	Scott Ebel
Division/Group	Happy Camp Highway North	Jennifer Harris / Jeff Bortner (T)
Group	Repair A	Derreck Johnson
Group	Repair B	Steve Westlake
Staging Area	DP 50	Tom Hawkins
c. Air Operations Branch		
Air Ops Branch Director		Ted Hass / Steve Mizikowski
Air Attack Supervisors		Jim Gonzalez / Isaac Flatley / Jeff Keiser
Air Support Supervisor		Mark Hocken
Helibase Managers IV		Robert Shoemaker
10. Finance Section		
Chief	Andrea Andresen / Patty Westgate	
Time Unit	Beverly Hollars	
Cost Unit	Doug Bright	
Compensation/Claims Unit	Kelly Lorenz	
Procurement Unit	Audrey Mainwaring	
ICPI	Gary Warburton	
Prepared by Resource Unit Leader Mary Lucas		

Fire Behavior Forecast # 32

Name of Incident: Slater and Devil Fires	Fire Number: CA-KNF-7035
Date & Time Issued: Oct 17, 2020 @ 2000	Operational Period: Oct 18, 2020
FBAN: Steve Ziel / Barry Kleckler (T)	Signed: /s/ Barry Kleckler

Assumptions: Déjà vu forecast, many of the inputs have not changed. Warm days, dry breeze, ample sunshine, and moderate overnight ridgetop humidity recoveries continue the incremental drying of fuels. Sunny south facing slopes where heat is present see smoldering fire kindle to flame and creep around on the surface when available fuels are near. Sources of heat are isolated, but there may be a bit more activity each shift as things begin to move around. The peak burn period is short as shadows get long quickly this time of year.

Weather Summary

**See Spot Weather Forecast **

Fire Behavior Summary

Fuels in the fire area are primarily composed of:

Timber Litter: Timber stand lacking significant understory, generally underburns with moderate rates of spread without wind/slope alignment with occasional torching. Ponderosa pine and Douglas-fir are common.

Timber with Understory: Timber stand with brush or small trees in the understory will burn readily and aggressively with occasional torching, even with little wind. Heavy down fuels are common, receptive to embers, and consume completely once ignited. True fir with low crown base heights are common.

Shrubs: Woody shrubs and shrub litter. Manzanita, tanoak, ceonothus. No grass present. May have scattered conifer with low branches that easily torch.

Today's Peak Fire Behavior Potential (wind and slope alignment):

Expect to see a bit more smoke today both in the fire interior and along edges with no containment where heat is present. Smoldering fire can transition to creeping surface fire where exposed to the sun and a breeze. Given some slope fire may move uphill and involve some brush, but any uphill push should be short lived.

Fuel Type	Live herbaceous fuels = 30%		POI = 30 – 50%		Spotting Distance
	Live woody fuels = 60-70%				
	Head Fire		Backing Fire		
	ROS	Flame	ROS	Flame	
Timber litter (TL8)	3 - 5 ch/hr	2 - 3 feet	<1 ch/hr	1 foot	0.1 mile
Timber with Understory (TU5)	5 - 9 ch/hr	5 - 7 feet	<1 ch/hr	2 feet	0.1 mile
Shrubs (SH2)	2 - 5 ch/hr	1 - 3 feet	<1 ch/hr	1 foot	<0.1 mile

Specific Assignments:

- Contained Divs** - Secured control lines with no perimeter spread expected. Expect to see some increased activity and smoke production from the fire interior. Watch out for reburn potential.
- Divs D,T/U** - Slope/terrain winds mean fire potential is all about aspects with sun exposure. Fine fuels and surface litter becoming available if exposed to an ignition source. Smoldering fire is expected and may transition to creep as fuels in the open will be drying in the sunlight and breeze.
- Aviation** - Good visibility with dry and clear air expected.

Safety

Standard Firefighting Order # 2 is key today:
 Know what you fire is doing at all times. Although much of this fire has exhibited little activity in recent days, it is not completely out. Hot stump holes, creeping duff fire, and fire-weakened snags and trees remain. Remain alert for these and other potentially hazardous phenomena.

DIVISION ASSIGNMENT LIST		1. Branch BRANCH I		2. Division/Group F / W / Z				
3. Incident Name SLATER		4. Operational Period Date: October 18, 2020 Time: 0700 - 1900						
5. Operations Personnel								
Operations Chief		Chris Orr / Gabe Dumm (T)		Division/Group Supervisor		Paul Mondragon (LFS) (10/29)/ Jesse Parry (T)		
Branch Director		Dave Provencio / Kit Moffitt (T)		Air Attack Supervisor		Jim Gonzalez / Isaac Flatley/ Jeff Keiser		
Safety Officer		Matt Broyles						
6. Resources Assigned this Period								
Strike Team/Task Force/ Resource Designator			Leader	Number Persons	Trans. Needed	Drop Off PT./Time	Pick Up PT./Time	Tentative Last Work Day
1.	C-23	HC2IA Happy Camp	Mikhial Lira	19	N	Happy Camp/ 0700	Happy Camp/ 1900	10/24
2.	E-175	ENG3 KNF Engine 325	Parashis	6	N	Happy Camp/ 0700	Happy Camp/ 1900	10/23
3.	E-177	ENG3 KNF Engine 326	Tkoch	5	N	Happy Camp/ 0700	Happy Camp/ 1900	10/25
4.	E-178	ENG3 KNF 327	H. Stoner	7	N	Happy Camp/ 0700	Happy Camp/ 1900	10/27
5.	E-228	ENG3 Texas Fire	Ernie Magana	3	N	Happy Camp/ 0700	Happy Camp/ 1900	10/18
6.	E-1034	ENG3 Gooseneast E77	Stacie Cicairos	7	N	Happy Camp/ 0700	Happy Camp/ 1900	10/20
7.	E-1035	ENG6 OLF Olympic	Jeffrey Neil	4	N	Happy Camp/ 0700	Happy Camp/ 1900	10/22
8.	O-1099	EMTF	Nick Harper-Johnston	1	N	Happy Camp/ 0700	Happy Camp/ 1900	10/21
9.	E-167	AMBU Med23 Ambulance	-Rotating-	2	N	Happy Camp/ 0700	Happy Camp/ 1900	
10.	O-386.71	SOF2	Tyson Albrecht	1	N	Happy Camp/ 0700	Happy Camp/ 1900	10/19
11.								
12.								
13.								
14.								
15.								
16.								
17.								
7. Control Operations/Work Assignments								
Patrol and monitor perimeter roads daily to ensure accessibility to fire perimeter. Mop-up control lines and around structures as appropriate to secure these areas. Scout and communicate alternate control lines should primary lines fail. Be available for initial attack upon request. Maintain indirect line on the northern boundary Seiad. Patrol Devil (south edge) by air. Continue to secure Thompson Creek road. Mop-up control lines and around structures as appropriate to secure these areas. Scout and communicate alternate control lines should primary lines fail.								
8. Special Instructions								
Backhaul unnecessary supplies, equipment, and trash. Air support as needed. DIV Z -Devil Fire- Patrol by air and ground								
Mop up Standards: The level of mop-up intensity will be based on site conditions at the division level, the values at risk, fuel bed receptiveness, and spread potential in the area adjacent to the containment line to the extent necessary to make the likelihood of escape minimal, based on professional experience, terrain, fuel types and conditions, and current/predicted weather conditions.								
Fire Suppression Repair: Divisions are to implement suppression repair per the Fire Suppression Repair Plan as containment of the fire progresses and suppression repair is initiated.								
9. Division/Group Communication Summary								
Function	Frequency	System	Channel	Function	Frequency	System	Channel	
Command Repeater	See Comm Plan			Command	See Comm Plan			
TAC				Air To Ground				
Prepared by (Resource Unit Leader): Mary Lucas			Approved by (Planning Section Chief): <i>/s/ Natalie Simrell</i>			Date 10/17/2020	Time 2100	

DIVISION ASSIGNMENT LIST		1. Branch BRANCH I	2. Division/Group HAPPY CAMP HIGHWAY SOUTH				
3. Incident Name SLATER		4. Operational Period Date: October 18, 2020			Time: 0700 - 1900		
5. Operations Personnel							
Operations Chief	Chris Orr / Gabe Dumm (T)		Division/Group Supervisor	Cheveyo Munk (10/30)			
Branch Director	Dave Provencio / Kit Moffitt (T)		Air Attack Supervisor	Jim Gonzalez / Isaac Flatley/ Jeff Keiser			
Safety Officer	Matt Broyles						
6. Resources Assigned this Period (H.C. = Happy Camp)							
Strike Team/Task Force/ Resource Designator		Leader	Number Persons	Trans. Need	Drop Off PT./Time	Pick Up PT./Time	Last Work Day
1.	E-1036 ENG6 GE Forestry	Ivan Gonzales	2	N	H.C. / 0700	H.C. / 1900	10/22
2.	E-1031 FEL1 Johnson Contracting	Cousinen / Johnson	1	N	H.C. / 0700	H.C. / 1900	swapping
3.	E-1024 FEL1 Dangle Head Processor Johnson Logging	Henry Johnson	2	N	H.C. / 0700	H.C. / 1900	swapping
4.	E-1025 SKD2 Jim Johnson Logging	Colby / Custer	1	N	H.C. / 0700	H.C. / 1900	swapping
5.	E-1026 SKD1 Johnson Contr.	Jake Howard	1	N	H.C. / 0700	H.C. / 1900	swapping
6.	E-20172 LOAD Loader Tom White	Walt Whitman	1	N	H.C. / 0700	H.C. / 1900	swapping
7.	E-1027 LDFR Loader Jim Johnson Logging	Jim Johnson	1	N	H.C. / 0700	H.C. / 1900	swapping
8.	E-1028 LOG Truck Johnson Contracting	Matt Johnson	1	N	H.C. / 0700	H.C. / 1900	swapping
9.	E-176 LDFR/GRPL Bob Johnson Construction	Colby Toms	2	N	H.C. / 0700	H.C. / 1900	swapping
10.	E-1023 EXCA Johnson Contracting	Eric Cousinen	1	N	H.C. / 0700	H.C. / 1900	swapping
11.	E-292 EXCA1 Rivers w/ lowboy	Bill Parry/ rotations	2	N	H.C. / 0700	H.C. / 1900	swapping
12.	E-1032 EXCA Johnson Logging	Matt Menne	2	N	H.C. / 0700	H.C. / 1900	swapping
13.	O-1108 FALM North Zone	Carl Hall	2	N	H.C. / 0700	H.C. / 1900	10/30
14.	O-1109 FALM	Curtis King	2	N	H.C. / 0700	H.C. / 1900	10/30
15.	O-20469 FALM God & Country	Travis Barney	2	N	H.C. / 0700	H.C. / 1900	10/29
16.	O-20309 FALM American Timber and Fire	Tommila / Austin	2	N	H.C. / 0700	H.C. / 1900	10/20
17.	O-20304 FALM Swedberg Contracting	Giguere / Frickel	2	N	H.C. / 0700	H.C. / 1900	10/22
18.	O-204 FALM Swedberg Contracting	Logan Wadley	2	N	H.C. / 0700	H.C. / 1900	10/19
19.	O-1001 FALM Cut Rite	Benning / Danville	2	N	H.C. / 0700	H.C. / 1900	10/23
20.	O-20345 TFLD (T)	Preston Bridges	1	N	H.C. / 0700	H.C. / 1900	10/20
21.	O-20421 TFLD	Andrew Auld	1	N	H.C. / 0700	H.C. / 1900	10/25
22.	O-397 HEQB (T)	Cayton Welborn →	1	N	H.C. / 0700	H.C. / 1900	10/27
23.	O-398 HEQB (T)	Stephen Spillers →	1	N	H.C. / 0700	H.C. / 1900	10/27
24.	O-20452 HEQB	Matthew Klindt →	1	N	H.C. / 0700	H.C. / 1900	10/27
25.	O-20453 HEQB	Glen Mayfield →	1	N	H.C. / 0700	H.C. / 1900	10/27
26.	O-386.71 SOF2	Tyson Albrecht	1	N	H.C. / 0700	H.C. / 1900	10/19
27.	S-20303 FLAGGERS	Parker Currier	3	N	H.C. / 0700	H.C. / 1900	
7. Control Operations/Work Assignments: Continue to evaluate and remove hazard trees to mitigate hazard to Happy Camp Highway according to the Road Hazardous Tree Mitigation Traffic Control Plan. Maintain communication and coordinate with PPL operations.							
8. Special Instructions: Backhaul unnecessary supplies, equipment, and trash. Ensure that the road can be cleared for emergency traffic within 15 minutes or less. There will be no closures of the road between 1700 and 1830. The road being open during that time is required for logistical support from Lake Selmac to Happy Camp. Engines will be utilized for mop up and fire watch as needed. Ensure compliance with Happy Camp Highway Road Hazardous Tree Mitigation Traffic Control Plan in the IAP. Fire Suppression Repair: Divisions are to implement suppression repair per the Fire Suppression Repair Plan as containment of the fire progresses and suppression repair is initiated.							
9. Division / Group Communication Summary							
Function	Frequency	System	Channel	Function	Frequency	System	Channel
Command repeater	See Comm Plan			Command	See Comm Plan		
TAC				Air To Ground			
Prepared by (Resource Unit Leader): Mary Lucas			Approved by (Planning Section Chief): /s/ Natalie Simrell		Date: 10/17/2020	Time: 2100	

DIVISION ASSIGNMENT LIST				1. Branch BRANCH II		2. Division/Group D				
3. Incident Name SLATER				4. Operational Period Date: October 18, 2020 Time: 0700 - 1900						
5. Operations Personnel										
Operations Chief		Chris Orr / Gabe Dumm (T)		Division/Group Supervisor		Marvin Roybal (10/19)				
Branch Director		Trevor Wallace		Air Attack Supervisor		Jim Gonzalez / Isaac Flatley / Jeff Keiser				
Safety Officer		Matt Broyles								
6. Resources Assigned this Period										
Strike Team/Task Force/ Resource Designator				Leader	Number Persons	Trans. Needed	Drop Off PT./Time	Pick Up PT./Time	Last Work Day	
1.	C-7	HC2IA Grayback 7B LFS		Tim Brewer	20	N	DP50 / 0700	Selmac / 1900	10/28	
2.	E-20067	ENG3 SRF Engine 312		Eric Johnson	3	N	DP50 / 0700	Selmac / 1900	10/26	
3.	E-20097	ENG3 USFS BR Engine11		Rebecca Fry	7	N	DP50 / 0700	Selmac / 1900	10/22	
4.	E-20181	ENG6 AK-TNF-E654		James Scribner	3	N	DP50 / 0700	Selmac / 1900	10/30	
5.	E-20175	CHIP Harris Crew		William Sunkler	2	N	DP50 / 0700	Selmac / 1900	10/27	
6.	O-20308	FALM Alaska Cutters		James LeClair	2	N	DP50 / 0700	Selmac / 1900	10/20	
7.	O-20328	Summit Medics EMPF/EMTF		Glazener / Brooks	2	N	DP50 / 0700	Selmac / 1900	10/20	
8.	O-20389	SOF2		Jon Lee	1	N	DP50 / 0700	Selmac / 1900	10/24	
9.										
10.										
11.										
12.										
13.										
14.										
15.										
16.										
17.										
18.										
19.										
20.										
21.										
22.										
7. Control Operations/Work Assignments										
Secure sections of Knopki Creek Road and Hazel View Road. Patrol and monitor fire behavior in the Chicago Creek drainage. Chip all spur roads from the 124 Road to Sanger Lake.										
8. Special Instructions: Backhaul unnecessary supplies, equipment, and trash. Take precautions in mitigating hazard trees.										
Mop up Standards: The level of mop-up intensity will be based on site conditions associated with the values at risk, fuel bed receptiveness, and spread potential in the areas adjacent to the containment line to the extent necessary to make the likelihood of escape minimal. Operate based on your professional experience and current/predicted weather conditions.										
Fire Suppression Repair: Divisions are to implement suppression repair per the Fire Suppression Repair Plan as containment of the fire progresses and suppression repair is initiated.										
9. Division/Group Communication Summary										
Function	Frequency	System	Channel	Function	Frequency	System	Channel			
Command Repeater	See Comm Plan			Command	See Comm Plan					
TAC				Air To Ground						
Prepared by (Resource Unit Leader): Mary Lucas				Approved by (Planning Section Chief): <i>/s/ Natalie Simrell</i>				Date 10/17/2020	Time 2100	

DIVISION ASSIGNMENT LIST				1. Branch BRANCH II		2. Division/Group G / M				
3. Incident Name SLATER				4. Operational Period Date: October 18, 2020 Time: 0700 - 1900						
5. Operations Personnel										
Operations Chief		Chris Orr / Gabe Dumm (T)		Division/Group Supervisor		Cindi Tonasket-Ebel (10/22)				
Branch Director		Trevor Wallace		Air Attack Supervisor		Jim Gonzalez / Isaac Flatley / Jeff Keiser				
Safety Officer		Matt Broyles								
6. Resources Assigned this Period										
Strike Team/Task Force/ Resource Designator				Leader	Number Persons	Trans. Needed	Drop Off PT./Time	Pick Up PT./Time	Last Work Day	
1.	E-20042 ENG3 E-352			Holly Miller	4	N	DP50 / 0700	Selmac / 0900	10/23	
2.	E-20160 ENG6 Diamond			Tyler Dyer	2	N	DP50 / 0700	Selmac / 0900	10/24	
3.	E-104	ENG6 North Pacific Engine 4	ODF	C. Ficcadenti	2	N	DP50 / 0700	Selmac / 0900	10/22	
4.	E-95	ENG6 AG Forestry	ODF	Herrea	2	N	DP50 / 0700	Selmac / 0900	10/21	
5.	E-20161 ENG6 Pacific Oasis			Casey Bjorklund	3	N	DP50 / 0700	Selmac / 0900	10/24	
6.	E-186	AMBU Del Norte Ambulance		Babbitt / Smith	2	N	DP50 / 0700	Selmac / 0900	11/18	
7.	O-20306 FALM Pacific Ridgeline #2 (Bushelers)			Carter / Coates	2	N	DP50 / 0700	Selmac / 0900	10/22	
8.	O-20388 EMTF			Patrick Bennett	1	N	DP50 / 0700	Selmac / 1900	10/25	
9.	O-20351 Drone HECM UMR 4122			Alex Plascencia	1	N	DP50 / 0700	Selmac / 1900	10/20	
10.	O-20346 Drone Pilot			Casey Cornels	1	N	DP50 / 0700	Selmac / 1900	10/20	
11.	O-20389 SOF2			Jon Lee	1	N	DP50 / 0700	Selmac / 1900	10/20	
12.	E-20086 UTV Top Gun									
13.										
14.										
15.										
16.										
17.										
18.										
7. Control Operations/Work Assignments Patrol and secure control lines. Scout for alternate control lines.										
8. Special Instructions: Remove all accountable property and unneeded equipment, supplies, and trash from fireline. 9938 RD is access for logging operations: be aware of heavy traffic. Murphy Timber Company will be using the Trapper Gulch road for accessing logging operations. Green Diamond Resources will be using the Oregon Mountain road to access logging operations sites in the lower Elk Creek drainage. Mop up Standards: The level of mop-up intensity will be based on site conditions at the division level, the values at risk, fuel bed receptiveness, and spread potential in the area adjacent to the containment line to the extent necessary to make the likelihood of escape minimal, based on professional experience, terrain, fuel types and conditions, and current/predicted weather conditions. Fire Suppression Repair: Divisions are to implement suppression repair per the Fire Suppression Repair Plan as containment of the fire progresses and suppression repair is initiated.										
9. Division/Group Communication Summary										
Function	Frequency	System	Channel	Function	Frequency	System	Channel			
Command Repeater	See Comm Plan			Command	See Comm Plan					
TAC				Air To Ground						
Prepared by (Resource Unit Leader): Mary Lucas				Approved by (Planning Section Chief): <i>/s/ Natalie Simrell</i>			Date: 10/17/2020		Time: 2100	

DIVISION ASSIGNMENT LIST			1. Branch BRANCH II		2. Division/Group P		
3. Incident Name SLATER			4. Operational Period Date: October 18, 2020 Time: 0700 - 1900				
5. Operations Personnel							
Operations Chief		Chris Orr / Gabe Dumm (T)			Division/Group Supervisor	Jesse Kiene (10/21)	
Branch Director		Trevor Wallace			Air Attack Supervisor	Jim Gonzalez / Isaac Flatley/ Jeff Keiser	
Safety Officer		Matt Broyles					
6. Resources Assigned this Period							
Strike Team/Task Force/ Resource Designator		Leader	Number Persons	Trans Needed	Drop Off PT./Time	Pick Up PT./Time	Last Work Day
1.	E-20177 ENG3 ENF #363 Eldorado	Tim Owens	5	N	DP50 / 0700	Selmac / 1900	10/27
2.	E-25 ENG6 North Pacific	W. Blackcrow	2	N	DP50 / 0700	Selmac / 1900	10/19
3.	E-70622 ENG6 RSF #622	Stephen Keen	3	N	DP50 / 0700	Selmac / 1900	10/30
4.	E-20102 Frontline Ambulance	Dobson / Corbin	2	N	DP50 / 0700	Selmac / 1900	10/25
5.	O-20201 EMTF	Lily Rockenbach	1	N	DP50 / 0700	Selmac / 1900	10/29
6.	O-20203 EMPF	P. McDonagh	1	N	DP50 / 0700	Selmac / 1900	10/20
7.	O-386.66 SOF2 (T)	Eric Brown	1	N	DP50 / 0700	Selmac / 1900	10/23
8.							
9.							
10.							
11.							
12.							
13.							
14.							
15.							
16.							
17.							
18.							
19.							
20.							
7. Control Operations/Work Assignments Hold and secure lines.							
8. Special Instructions Backhaul unnecessary supplies, equipment, and trash. Mop up Standards: The level of mop-up intensity will be based on site conditions at the division level, the values at risk, fuel bed receptiveness, and spread potential in the area adjacent to the containment line to the extent necessary to make the likelihood of escape minimal, based on professional experience, terrain, fuel types and conditions, and current/predicted weather conditions. Fire Suppression Repair: Divisions are to implement suppression repair per the Fire Suppression Repair Plan as containment of the fire progresses and suppression repair is initiated.							
9. Division/Group Communication Summary							
Function	Frequency	System	Channel	Function	Frequency	System	Channel
Command Repeater	See Comm Plan			Command	See Comm Plan		
TAC				Air To Ground			
Prepared by (Resource Unit Leader): Mary Lucas			Approved by (Planning Section Chief): /s/ <i>Natalie Simrell</i>			Date 10/17/2020	Time 2100

DIVISION ASSIGNMENT LIST				1. Branch BRANCH II		2. Division/Group T / U		
3. Incident Name SLATER				4. Operational Period Date: October 18, 2020 Time: 0700 - 1900				
5. Operations Personnel								
Operations Chief		Chris Orr / Gabe Dumm (T)		Division/Group Supervisor		Scott Ebel (10/22)		
Branch Director		Trevor Wallace		Air Attack Supervisor		Jim Gonzalez / Isaac Flatley/ Jeff Keiser		
Safety Officer		Matt Broyles						
6. Resources Assigned this Period								
Strike Team/Task Force/ Resource Designator			Leader	Number Persons	Trans. Needed	Drop Off PT./Time	Pick Up PT./Time	Last Work Day
1.	C-10 HC2IA BLM Crew10	LFS	Shawn DeWitt	22	N	DP50 / 0700	Selmac / 1900	10/21
2.	C-15 HC2 Grayback Forestry 17019	ODF	Tim Nygren	20	N	DP50 / 0700	Selmac / 1900	10/20
3.	E-125 ENG6 Grayback Engine 37	LFS	Eric Coleman	2	N	DP50 / 0700	Selmac / 1900	10/29
4.	E-20184 ENG6 Patrick		Paul Rampinini	2	N	DP50 / 0700	Selmac / 1900	10/27
5.	O-20337 EMTF		Erin Brown	1	N	DP50 / 0700	Selmac / 1900	10/20
6.	O-20326 Highland Medics		Anticevich / Sanchez	2	N	DP50 / 0700	Selmac / 1900	10/20
7.	O-386.66 SOF2 (T)		Eric Brown	1	N	DP50 / 0700	Selmac / 1900	10/23
8.								
9.								
10.								
11.								
12.								
13.								
14.								
15.								
16.								
17.								
18.								
7. Control Operations/Work Assignments: Continue to hold and secure containment features and continue line construction to Swan Mountain.								
8. Special Instructions: Backhaul unnecessary supplies, equipment, and trash. Develop management action point on south edge of Oregon Caves National Monument boundary. Proposed action would be to consider activating structure protection sprinklers, dependent on observed rates of spread. Work with your READ to protect cultural resources, rare plants, and the Oregon Caves National Monument. Mop up Standards: The level of mop-up intensity will be based on site conditions at the division level, the values at risk, fuel bed receptiveness, and spread potential in the area adjacent to the containment line to the extent necessary to make the likelihood of escape minimal, based on professional experience, terrain, fuel types and conditions, and current/predicted weather conditions. Fire Suppression Repair: Divisions are to implement suppression repair per the Fire Suppression Repair Plan as containment of the fire progresses and suppression repair is initiated.								
9. Division/Group Communication Summary								
Function	Frequency	System	Channel	Function	Frequency	System	Channel	
Command Repeater	See Comm Plan			Command	See Comm Plan			
TAC				All To Ground				
Prepared by (Resource Unit Leader): Mary Lucas			Approved by (Planning Section Chief): <i>/s/ Natalie Simrell</i>		Date: 10/17/2020		Time: 2100	

DIVISION ASSIGNMENT LIST			1. Branch BRANCH II	2. Division/Group HAPPY CAMP HIGHWAY NORTH- Page 1 of 2					
3. Incident Name SLATER			4. Operational Period Date: October 18, 2020 Time: 0700 - 1900						
5. Operations Personnel									
Operations Chief	Chris Orr / Gabe Dumm (T)		Division/Group Supervisor		Jennifer Harris (10/22) / Jeff Bortner (T) (10/22)				
Branch Director	Trevor Wallace		Air Attack Supervisor		Jim Gonzalez / Isaac Flatley/ Jeff Keiser				
Safety Officer	Matt Broyles								
6. Resources Assigned this Period									
	Strike Team/Task Force/ Resource Designator		Leader	Number Persons	Trans. Need	Drop Off PT./Time	Pick Up PT./Time	Last Work Day	
1.	C-6	HC2 Pacific Oasis 17056	LFS	Donovan Culp	20	N	DP50 / 0700	Selmac / 1900	R&R 10/16-17
2.	C-16	HC2 Grayback Forestry 17020	ODF	Robert Pondelick	20	N	DP50 / 0700	Selmac / 1900	10/20
3.	E-20174	ENG6 Heck of a Fire Crew		Wyatt Lawrence	3	N	DP50 / 0700	Selmac / 0900	10/26
4.	O-99	FALM Pacific Ridgeline	ODF	G.Griffen / J. Miller	2	N	DP50 / 0700	Selmac / 1900	10/20
5.	O-44	FALM Wapati	ODF	O'Donnel / Pickle	2	N	DP50 / 0700	Selmac / 1900	10/31
6.	O-48	FALM Creel Cutting	ODF	Payne / Bateson	2	N	DP50 / 0700	Selmac / 1900	10/21
7.	O-49	FALM Creel Cutting	ODF	Bateson / Mackey	2	N	DP50 / 0700	Selmac / 1900	10/21
8.	O-20302	FALM C&K Wildland Fire		Nick Browning	2	N	DP50 / 0700	Selmac / 1900	10/21
9.	O-20307	FALM Jamison Fallers		Sean Hickey	2	N	DP50 / 0700	Selmac / 1900	10/20
10.	O-20301	FALM Pacific Ridgeline		Miller / Adams	2	N	DP50 / 0700	Selmac / 1900	10/21
11.	O-20371	TFLD (T)		Luke Macho ✈	1	N	DP50 / 0700	Selmac / 1900	10/22
12.	O-20266	TFLD (T)		Justin Spurrier ✈	1	N	DP50 / 0700	Selmac / 1900	10/21
13.	O-76	TFLD	LFS	Spencer Gregory	1	N	DP50 / 0700	Selmac / 1900	10/26
14.	O-66	TFLD	LFS	Jothan McGauhey	1	N	DP50 / 0700	Selmac / 1900	10/25
15.	O-67	TFLD	LFS	Clay Harvey	1	N	DP50 / 0700	Selmac / 1900	10/25
16.	O-89	HEQB	LFS	Mitchel Thomas	1	N	DP50 / 0700	Selmac / 1900	10/28
17.	O-20495	HEQB		Graham Worley-Hood ✈	1	N	DP50 / 0700	Selmac / 1900	10/29
18.	O-20243	HEQB (T)		Craig Carlisle ✈	1	N	DP50 / 0700	Selmac / 1900	10/23
19.	O-20403	HEQB		Sean Loscudo ✈	1	N	DP50 / 0700	Selmac / 1900	10/25
20.	O-20381	HEQB (T)		Bartholomew Wilson ✈	1	N	DP50 / 0700	Selmac / 1900	10/21
21.	O-20454	HEQB (TFLD-T)		Brian Murphy	1	N	DP50 / 0700	Selmac / 1900	10/27
22.	O-20512	FELB		Russ Macel	1	N	DP50 / 0700	Selmac / 1900	10/31
23.	O-20156	FELB		Kris Schroeder	1	N	DP50 / 0700	Selmac / 1900	10/24
7. Control Operations/Work Assignments: Remove hazard trees within striking distance of the Happy Camp / Takilma Road as identified by Resource Advisors / Technical Specialists.									
8. Special Instructions: Backhaul unnecessary supplies, equipment, and trash. Adhere to established Traffic Control Plan in the IAP, while coordinating with stakeholders and cooperators. Fire Suppression Repair: Divisions are to implement suppression repair per the Fire Suppression Repair Plan as containment of the fire progresses and suppression repair is initiated.									
9. Division / Group Communication Summary									
Function	Frequency	System	Channel	Function	Frequency	System	Channel		
Command repeater	See Comm Plan			Command	See Comm Plan				
TAC				Air To Ground					
Prepared by (Resource Unit Leader): Mary Lucas			Approved by (Planning Section Chief): /s/ <i>Natalie Simrell</i>			Date: 10/17/2020		Time: 2100	

DIVISION ASSIGNMENT LIST		1. Branch BRANCH II	2. Division/Group HAPPY CAMP HIGHWAY NORTH- Page 2 of 2				
3. Incident Name SLATER		4. Operational Period Date: October 18, 2020 Time: 0700 - 1900					
5. Operations Personnel							
Operations Chief	Chris Orr / Gabe Dumm (T)		Division/Group Supervisor	Jennifer Harris (10/22) / Jeff Bortner (T) (10/22)			
Branch Director	Trevor Wallace		Air Attack Supervisor	Jim Gonzalez / Isaac Flatley/ Jeff Keiser			
Safety Officer	Tyson Albrecht / Matt Broyles						
6. Resources Assigned this Period							
	Strike Team/Task Force/ Resource Designator	Leader	Number Persons	Trans. Need	Drop Off PT./Time	Pick Up PT./Time	Last Work Day
24.	E-20173 CHIP Zeb's Tree Service	Jordan Allbritton	2	N	DP50 / 0700	Selmac / 1900	10/28
25.	E-20176 CHIP Pacific Ridgeline	Lefi Tausaga	2	N	DP50 / 0700	Selmac / 1900	10/27
26.	E-20123 CHIP Diamond	Joshua Stewart	2	N	DP50 / 0700	Selmac / 1900	10/21
27.	E-20127 EXCA2 Keith Grading & Exca	Clifford Keith	2	N	DP50 / 0700	DP50 / 1900	swapping
28.	E-20126 EXCA2 Zeb's Tree Service	Zach Williams	2	N	DP50 / 0700	DP50 / 1900	swapping
29.	E-20128 FEL2 Feller Buncher Miller Timber	Jose Gallarado	1	N	DP50 / 0700	DP50 / 1900	swapping
30.	E-20137 LDFR Loader John Boak Logging	John Boak	1	N	DP50 / 0700	DP50 / 1900	swapping
31.	E-20136 LDFR Loader Rude Logging	Issac Moore	2	N	DP50 / 0700	DP50 / 1900	swapping
32.	E-20135 LDFR Heelboom loader Siskyiou Cascade	Rodger Caswell	1	N	DP50 / 0700	DP50 / 1900	swapping
33.	E-20170 SKD1 Inland Timber	Adam Miller	2	N	DP50 / 0700	DP50 / 1900	swapping
34.	E-20171 SKD1 Zeb's Tree Service	Zeb Wardle	2	N	DP50 / 0700	DP50 / 1900	swapping
35.	E-20083 SKD2 Pacific Ridgeline	D.Heald/ D. Miller	2	N	DP50 / 0700	DP50 / 1900	swapping
36.	E-20166 SKD2 Pacific Ridgeline	Ron Rossiter	2	N	DP50 / 0700	DP50 / 1900	swapping
37.	E-20165 SKD2 Mark Jones Logging	M.Bartlett / L.Daily	2	N	DP50 / 0700	DP50 / 1900	swapping
38.	E-89 REM Rural Metro fire	ODF Ryan Bradbeer	4	N	DP50 / 0700	Selmac / 1900	10/19
39.	O-20316 SEC1	Nathan Snead	1	N	DP50 / 0700	Selmac / 1900	10/18
40.	O-386.66 SOF2(T)	Eric Brown	1	N	DP50 / 0700	Selmac / 1900	10/23
41.	S-20303 FLAGGER	Parker Carrier	6	N	DP50 / 0700	Selmac / 1900	
7. Control Operations/Work Assignments: Remove hazard trees within striking distance of the Happy Camp / Takilma Road as identified by Resource Advisors / Technical Specialists.							
8. Special Instructions: Backhaul unnecessary supplies, equipment, and trash. Adhere to established Traffic Control Plan in the IAP, while coordinating with stakeholders and cooperators. Fire Suppression Repair: Divisions are to implement suppression repair per the Fire Suppression Repair Plan as containment of the fire progresses and suppression repair is initiated.							
9. Division / Group Communication Summary							
Function	Frequency	System	Channel	Function	Frequency	System	Channel
Command repeater	See Comm Plan			Command	See Comm Plan		
TAC				Air To Ground			
Prepared by (Resource Unit Leader): Mary Lucas			Approved by (Planning Section Chief): /s/ <i>Natalie Simrell</i>		Date: 10/17/2020	Time: 2100	

DIVISION ASSIGNMENT LIST				1. Branch BRANCH II		2. Division/Group REPAIR GROUP A				
3. Incident Name SLATER				4. Operational Period Date: October 18, 2020 Time: 0700 - 1900						
5. Operations Personnel										
Operations Chief		Chris Orr / Gabe Dumm (T)		Division/Group Supervisor		Derreck Johnson (ODF) (10/21)				
Branch Director		Trevor Wallace		Air Attack Supervisor		Jim Gonzalez / Isaac Flatley/ Jeff Keiser				
Safety Officer		Matt Broyles								
6. Resources Assigned this Period										
Strike Team/Task Force/ Resource Designator				Leader		Number Persons	Trans. Needed	Drop Off PT./Time	Pick Up PT./Time	Last Work Day
1.	C-6	HC2IA Ponderosa IA 17161 ODF		Carlos Bencommo		20	N	DP50 / 0700	Selmac / 1900	10/20
2.	C-20036	HC2 Dust Busters 17117		Chris Urban		20	N	DP50 / 0700	Selmac / 1900	10/24
3.	C-20037	HC2 First Strike Environmental		William Chorba		19	N	DP50 / 0700	Selmac / 1900	10/24
4.	E-20180	ENG6 BLM Burns 2616		Devin Johnson		4	N	DP50 / 0700	Selmac / 1900	10/19
5.	E-20088	WTS2 Able Services		Devin Serr		1	N	DP50 / 0700	DP50 / 0700	10/31
6.	E-20156	EXCA3 Inland Timber		Jim Dougherty		2	N	DP50 / 0700	DP50 / 1900	10/22
7.	E-20155	EXCA3 Pacific Ridgeline		Dean Heald		2	N	DP50 / 0700	DP50 / 1900	10/22
8.	E-20081	DOZ1 Wilkin Mining		Tyler Center		2	N	DP50 / 0700	DP50 / 1900	10/23
9.	E-20153	DOZ3 D4H		Jim Pope		2	N	DP50 / 0700	DP50 / 1900	10/22
10.	E-20182	CHIP Grayback		Craig Lawrence		2	N	DP50 / 0700	Selmac / 1900	10/28
11.	E-20164	CHIP Diamond Fire		Troy Alexander		2	N	DP50 / 0700	Selmac / 1900	10/25
12.	O-70	TFLD ODF		Jesse Smart		1	N	DP50 / 0700	Selmac / 1900	10/30
13.	O-91	TFLD LFS		Brian Pratt		1	N	DP50 / 0700	Selmac / 1900	10/25
14.	O-20447	TFLD		John Ryan		1	N	DP50 / 0700	Selmac / 1900	10/27
15.	O-4	TFLD ODF		Sean Hendrix		1	N	DP50 / 0700	Selmac / 1900	10/29
16.	O-20493	EMTF		Terry Robinson		1	N	DP50 / 0700	Selmac / 1900	10/29
17.	E-51	UTV Grayback ODF		Nathan		1	N	DP50 / 0700	Selmac / 1900	10/19
18.	O-27	DRIV ODF		Dana Swink		1	N	DP50 / 0700	Selmac / 1900	
19.										
20.										
21.										
22.										
7. Control Operations/Work Assignments										
8. Special Instructions Communications with READ/REAF on specific fire suppression repair needs.										
9. Division/Group Communication Summary										
Function	Frequency	System	Channel	Function	Frequency	System	Channel			
Command Repeater	See Comm Plan			Command	See Comm Plan					
TAC				Air To Ground						
Prepared by (Resource Unit Leader): Mary Lucas				Approved by (Planning Section Chief): /s/ Natalie Simrell			Date 10/17/2020		Time 2100	

DIVISION ASSIGNMENT LIST				1. Branch BRANCH II		2. Division/Group REPAIR GROUP B			
3. Incident Name SLATER				4. Operational Period Date: October 18, 2020 Time: 0700 - 1900					
5. Operations Personnel									
Operations Chief		Chris Orr / Gabe Dumm (T)			Division/Group Supervisor		Steve Westlake (10/20)		
Branch Director		Trevor Wallace			Air Attack Supervisor		Jim Gonzalez / Isaac Flatley / Jeff Keiser		
Safety Officer		Matt Broyles							
6. Resources Assigned this Period									
Strike Team/Task Force/ Resource Designator				Leader	Number Persons	Trans. Needed	Drop Off PT./Time	Pick Up PT./Time	Last Work Day
1.	C-20017 HC2 Dust Busters Plus			Jonathan Adsit	20	N	DP50 / 0700	Selmac / 1900	10/24
2.	C-20038 HC2 Pacific Oasis 17058			Donavan Culp Jr.	20	N	DP50 / 0700	Selmac / 1900	10/24
3.	E-20179 ENG3 TMU 344 Tahoe Basin			Richard Neves	5	N	DP50 / 0700	Selmac / 1900	10/27
4.	E-44 EXCA2 Stephen Stark / E-44A Lowboy	ODF	Stephen Stark	2	N	DP50 / 0700	DP50 / 1900	10/30	
5.	E-20084 EXCA2 General Excavating			J. Miller / L. Searle	2	N	DP50 / 0700	DP50 / 0700	10/29
6.	E-20157 EXCA3 General Excavating			Joe Berklich	2	N	DP50 / 0700	DP50 / 1900	10/22
7.	E-37 EXCA3 CJ Corns	ODF	Rotating operators	2	N	DP50 / 0700	DP50 / 1900	10/19	
8.	E-20151 EXCA3 Clint Hatfield Trucking			Michael Sullivan	2	N	DP50 / 0700	DP50 / 1900	10/23
9.	E-20183 CHIP North Zone Fallers			Gavin Mason	2	N	DP50 / 0700	DP50 / 1900	10/29
10.	O-92 TFLD	LFS	Josh Salazar	1	N	DP50 / 0700	Selmac / 1900	10/28	
11.	O-94 TFLD	LFS	Robert Masterson	1	N	DP50 / 0700	Selmac / 1900	10/28	
12.	O-68 TFLD	LFS	Seth Jones	1	N	DP50 / 0700	Selmac / 1900	10/25	
13.	O- 399 EMTF		Joel Toline	1	N	DP50 / 0700	Selmac / 1900	10/29	
14.									
15.									
16.									
17.									
18.									
19.									
20.									
21.									
22.									
7. Control Operations/Work Assignments									
8. Special Instructions Communications with READ/REAF on specific fire suppression repair needs.									
9. Division/Group Communication Summary									
Function	Frequency	System	Channel	Function	Frequency	System	Channel		
Command Repeater	See Comm Plan			Command	See Comm Plan				
TAC				Air To Ground					
Prepared by (Resource Unit Leader): Mary Lucas				Approved by (Planning Section Chief): /s/ <i>Natalie Simrell</i>		Date 10/17/2020		Time 2100	

READ ASSIGNMENT LIST		1. Branch		2. Division/Group			
3. Incident Name SLATER & DEVIL		4. Operational Period Date: October 18, 2020 Time: 0700 - 1900					
5. Operations Personnel							
Operations Chief		Lead READs:		USFS KNF Sam Commarto O-281 BLM MED Stacy Johnson O-278 (541-201-3119)			
Field Operations		Air Attack Supervisor					
Safety Officer							
6. Resources Assigned this Period							
Strike Team/Task Force/ Resource Designator		Leader	Number Persons	Trans. Needed	Drop Off PT./Time	Pick Up PT./Time	Tentative Last Work Day
1.	O-20041 REAF OR-BLM	Colby Hawkinson					10/24
2.	O-20358 REAF AK-AKD	Kevin Church					10/20
3.	O- 20324 REAF WA-SPD	Sean Gordon					10/19
4.	O-20299 THSP OR-UMF	Zackary Davis					10/21
5.	O-20429 ARCH MT-GNP	Phil Wilson					10/25
6.	O-20390 REAF OR-BLM	Jeff Jackson					10/23
7.	O-20428 REAF CA-SRF	Scott Hagerty					10/25
8.	O-285 REAF CA-SRF	Donna Peppin					10/28
9.	O-286 READ MI-HMF	Ben Daly					10/18
10.	O-1091 REAF CA-KNF	Todd Drake					10/20
11.	O-1105 FFT2 CA-KNF	Dylan Fraley					10/27
12.	O-1055 REAF CA-KNF	Rider Reynolds					10/22
13.	O-1105 READ CA-KNF	Sarah Borman					10/27
7. Control Operations							
8. Special Instructions							
9.							
Function	Frequency	System	Channel	Function	Frequency	System	Channel
Command Repeater	See Comm Plan			Command	See Comm Plan		
TAC				Air To Ground			
Prepared by Mary Lucas			Approved by			Date 10/17/2020	Time 2100

AIR OPERATIONS SUMMARY 220

INCIDENT NAME: Slater Fire	OPS PERIOD DATE: 10/18/2020	START TIME: 0900	END TIME: 1900	SUNRISE: (Illinois V) 0732	SUNSET: IV 1826										
<p>Risk Assessment Mitigations, Special Instructions, and Remarks:</p> <p>Assess Risk Daily: assess visibility, weather, complacency, communications, fatigue, etc. – Make informed risk acceptance decisions.</p> <p>Be alert for unauthorized drone use in fire area</p> <p>Short haul helicopter in Weaverville, CA. Call YICC at 530-841-4604.</p>															
<p>Helibase Info:</p> <p>Illinois Valley Latitude N42°06.216 Longitude W123°40.945</p> <p>Scott Valley Latitude N41° 33.47 Longitude W122° 51.30</p>		<p>TFR Info: 0/2475 (polygon) SFC up to and including 12,000 feet MSL</p> <p>Frequency: 133.0250</p> <p>Effective Until: November 13, 2020 at 0659 UTC</p>		<p>Rescue Helicopter: med plan</p> <table border="1" style="width:100%; border-collapse: collapse;"> <tr> <td style="width:50%;">Day Hoist</td> <td style="width:50%;">Night Hoist</td> </tr> <tr> <td>Name CANG821</td> <td>CANG821</td> </tr> <tr> <td>Phone Contact YICC</td> <td>Contact YICC</td> </tr> <tr> <td>Make/Mod UH-60</td> <td>UH-60</td> </tr> <tr> <td>Location Redding</td> <td>Redding</td> </tr> </table>		Day Hoist	Night Hoist	Name CANG821	CANG821	Phone Contact YICC	Contact YICC	Make/Mod UH-60	UH-60	Location Redding	Redding
Day Hoist	Night Hoist														
Name CANG821	CANG821														
Phone Contact YICC	Contact YICC														
Make/Mod UH-60	UH-60														
Location Redding	Redding														
<p>Aircraft Lend/Lease: To lend/borrow aircraft among other incidents: submit requests through YICC to ensure proper ordering procedures.</p>															

Position	NAME	PHONE #	FREQUENCIES	type	Freq. TX	Freq. RX	FIXED-WING Avail/ Type/ Make-Model/ N#
AOBD Plans	Ted Hass	541-646-1318	Air/Air Primary (victor link) TFR	AM	133.0250	133.0250	AIRTANKERS- order through Yreka Dispatch
AOBD Field	Steve Mizikowski	541-580-5210	Air/Air Secondary	AM	120.2250	120.2250	Confer: 888-844-9904 4129722# @0930
ASGS	Mark Hocken	541-261-1085	Air Attack Briefing	AM	134.3250	134.3250	E-Mail ALL Costs to:
HEBM - IV	Robert Shoemaker	847-946-6780	A/G Primary	FM	166.6000	166.6000	douglas_bright@firenet.gov
ATGS	Jaime Lilienthal	541-529-9492	A/G Secondary	FM	164.6000	164.6000	IAP/Maps: http://linktr.ee/Slater Incident
Helibase	IV Helibase	847-946-6780	Air Tactics	FM	165.9875	165.9875	DEMOB: 2020.slater.dmob.north@firenet.gov
Yreka Dispatch RVICC		530-841-4604	Deck	FM	163.1000	163.1000	Ordering: slaternorthzoneordering@gmail.com
North Ops HOC	Kevin Merrill	541-618-2505 605-222-3883	CALCORD Medical	FM	156.0750 (156.7 (6))	156.0750 (156.7 (6))	Helicopter Flight Hours: email EOS daily to: kevin.merrill@usda.gov
ATGS - AA05 N32WS: AC690	Jim Gonzalez Isaac Flatley	619-607-8642 530-864-0202	MEDNET Medical Oregon	FM	155.3500	155.3500	
ATGS- AA 0KB N840KB: AC840	Jeff Keiser	530-598-1590	Air Guard	FM	168.625 (110.9)	168.625	

HELICOPTERS Illinois Valley (IV) / Scott Valley (SV)

FAA N#	T Y	MAKE/ MODEL	BASE	AVAIL	REMARKS	FAA N#	T Y	MAKE/ MODEL	BASE	AVAIL	REMARKS
N674TH	1	K1200	IV	0900	Bucket	N2773H	2	Bell 205++	IV	0900	Douglas Helitack
N83BH	1	EH-60A	IV	0900	Bucket	N722LM	3	Bell 206 L-4	IV	1400	Recon, ATGS

HELICOPTERS – Forest IA				UAS INFORMATION							
FAA N#	T Y	MAKE/ MODEL	BASE	AVAIL	REMARKS	FAA N#	T Y	MAKE/ MODEL	BASE	AVAIL	REMARKS
H-669H	2	Bell 205A-1++	SIY	0900	Price Valley Rappelers	FA3RCPKPYK3 (UR4122)	4	3DR Solo	na	0800	w/ IR camera Floating
N401AJ	1	CH-47D	SIY	0900	Cal Fire Preposition						
FIXED WING AERIAL SUPERVISION											
N840KB	1	AC840	Siskiyou	0900	AA 0KB						
N32WS	1	AC 690	Siskiyou	0900	AA 05						

ICS 220 Continued

TASK/ MISSION/ ASSIGNMENT (Type/function includes: Air Tactical, Retardant, Recon, Personnel Transport, Bucket Operations, SAR, etc.				
Request from	Mission	AIRCRAFT	Time Needed	Comments
Division U	Bucket support as requested and conditions allow.			
Division D	Bucket support			

RESOURCE CONCERNS/INSTRUCTIONS

Retardant	Track locations and gallons applied AVOID aerial application of retardant / foam / agent within 300' of waterways, bodies of water, etc. If Retardant / Foam / Agent is dropped within these areas immediately notify the AOB and provide the following information: Lat / Long, estimated number of gallons and a map detailing the area.
Dip sites	Track all dip site use by gallons and locations (for cost share purposes) Dips from Kelly Lake must be dropped north of Klamath River and south of Oregon border
Illinois Valley HB	Minimize driving off pavement, utilize weed wash adjacent to airport, utilize Hotsy for bucket rinse if changing watersheds

INCIDENT RADIO COMMUNICATIONS PLAN		1. Incident Name BRANCH 1 - SOUTH		2. Date/ Time Prepared 10/17/2020 1700		3. Operational Period Date/Time 10/18/2020 0700-1900	
Channel	DISPLAY	Mode: W=Wideband Analog, N=Narrowband Analog, D=Digital, M=Mixed					
		Frequency	Tone	Mode	Assignment	Remarks	
1	CMD1-S	Rx	173.0875	156.7	N	DIV F & DIV W	SLATER BUTTE RPTR
		Tx	164.0000	156.7			
2	CMD2-S	Rx	173.7500	156.7	N	DIV F & DIV W	LAKE MOUNTAIN RPTR
		Tx	163.8250	156.7			
3	CMD3-S	Rx	170.9750	156.7	N	UNASSIGNED	NOT IN USE
		Tx	168.7000	156.7			
4	CMD4-S	Rx	169.9625	103.5	N	DIV Z	WHISKEY RPTR
		Tx	165.5000	103.5			
5	TAC5	Rx	168.6000	103.5	N	REPAIR A&B	
		Tx	168.6000	103.5			
6	TAC6	Rx	166.7750	156.7	N	DIV F / W / Z	
		Tx	166.7750	156.7			
7	TAC7	Rx	168.0500	156.7	N	HAPPY CAMP HWY SOUTH	
		Tx	168.0500	156.7			
8	TAC8	Rx	168.2000	156.7	N	UNASSIGNED	
		Tx	168.2000	156.7			
9	TAC9	Rx	166.7250	156.7	N	UNASSIGNED	
		Tx	166.7250	156.7			
10	TAC10	Rx	168.2500	156.7	N	UNASSIGNED	
		Tx	168.2500	156.7			
11	VTAC11	Rx	151.1375	156.7	N	UNASSIGNED	
		Tx	151.1375	156.7			
12	A/G 43	Rx	167.6000	NONE	N	ALL DIVS	LOCAL A/G
		Tx	167.6000	NONE			
13	A/G CMD	Rx	166.6000	NONE	N	ALL DIVS	DIVS to Helco/ATGS
		Tx	166.6000	NONE			
14	A/G TAC	Rx	164.6000	NONE	N	ALL DIVS	Bucket Operations
		Tx	164.6000	NONE			
15	CALCORD	Rx	156.0750	156.7	N	ALL DIVS	Medical
		Tx	156.0750	156.7			
16	AIRGUARD	Rx	168.6250	NONE	N	ALL DIVS	Emergency Air Contact
		Tx	168.6250	110.9			

5. Prepared by (Communications Unit)
Todd Bellefeuille, COML

CONTROLLED UNCLASSIFIED INFORMATION

INCIDENT RADIO COMMUNICATIONS PLAN		1. Incident Name SLATER SOUTH IA		2. Date/ Time Prepared 10/17/2020 1700		3. Operational Period Date/Time 10/18/2020 0700-1900	
Channel	DISPLAY	Mode		Assignment		Remarks	
		Frequency	Tone	Mode	Assignment	Remarks	Remarks
1	KLNf ORNG	Rx	172.2750	NONE	N		KLAMATH NF ORANGE NET SIMPLEX
		Tx	172.2750	192.8			
2	KLNf ORNG	Rx	172.2750	NONE	N		LAKE MOUNTAIN USED AT HAPPY CAMP
		Tx	164.7000	123.0			
3	KLNf ORNG	Rx	172.2750	NONE	N		BALDY LOOKOUT USED AT HAPPY CAMP
		Tx	164.7000	131.8			
4	KLNf ORNG	Rx	172.2750	NONE	N		UKONOM USED AT HAPPY CAMP
		Tx	164.7000	146.2			
5	SIX NF	Rx	172.3750	NONE	N		MONKEY RIDGE USED AT GASPUAT RD
		Tx	164.1750	110.9			
6	SIX NF	Rx	172.3750	NONE	N		SHIP MTN USED AT GASPUAT RD
		Tx	164.1750	136.5			
7	NIFC TAC 2	Rx	168.2000	NONE	N		TAC CHANNEL
		Tx	168.2000	NONE			
8	R5 PROJ	Rx	166.6625	NONE	N		R5 PROJECT CHANNEL
		Tx	166.6625	NONE			
9	A/G 43	Rx	167.6000	NONE	N		KLAMATH AND SIX RIVERS AIR TO GROUND 43
		Tx	167.6000	NONE			
10	A/G (PRIMARY) CMD	Rx	166.6000	NONE	N		SLATER FIRE A/G CMD
		Tx	166.6000	NONE			
11	A/G (SECONDARY) TAC	Rx	164.6000	NONE	N		SLATER FIRE A/G TAC
		Tx	164.6000	NONE			
12							
13							
14							
15	CALCORD	Rx	156.0750	156.7	N		MEDICAL
		Tx	156.0750	156.7			
16	AIRGUARD	Rx	168.6250	NONE	N		EMERGENCY AIR CONTACT
		Tx	168.6250	110.9			

5. Prepared by (Communications Unit)
Todd Bellefeuille, COML

CONTROLLED UNCLASSIFIED INFORMATION

INCIDENT RADIO COMMUNICATIONS PLAN		1. Incident Name		BRANCH 2- NORTH		2. Date/ Time Prepared		3. Operational Period Date/Time	
Channel	DISPLAY	Frequency		Tone		Mode	Assignment	Remarks	
		Rx	Tx	103.5	103.5				
1	CMD1-N	Rx	172.5500	103.5		N	DIV T, Div U, Div Z	Bolan Rptr	
		Tx	164.8625	103.5					
2	CMD2-N	Rx	170.0125	103.5		N	DIV M & Div P	Fiddler Rptr	
		Tx	165.2500	103.5					
3	CMD3-N	Rx	173.6000	103.5		N	Div D & Div G	Monkey Rptr	
		Tx	162.1875	103.5					
4	VTAC14	Rx	159.4725	156.7		N	UNASSIGNED		
		Tx	159.4725	156.7					
5	TAC5	Rx	168.0500	103.5		N	DIV T/U		
		Tx	168.0500	103.5					
6	TAC6	Rx	168.2000	103.5		N	DIV G/M		
		Tx	168.2000	103.5					
7	TAC7	Rx	168.6000	103.5		N	REPAIR A&B		
		Tx	168.6000	103.5					
8	TAC8	Rx	166.7250	103.5		N	DIV D		
		Tx	166.7250	103.5					
9	TAC9	Rx	166.7750	103.5		N	UNASSIGNED		
		Tx	166.7750	103.5					
10	TAC10	Rx	168.2500	103.5		N	DIV P		
		Tx	168.2500	103.5					
11	VTAC11	Rx	151.1375	156.7		N	HAPPY CAMP HWY NORTH		
		Tx	151.1375	156.7					
12	ODF RPTR	Rx	151.4300	NONE		N	DIV P	TACTICAL RPTR	
		Tx	159.4500	167.9					
13	A/G (PRIMARY) CMD	Rx	166.6000	NONE		N	ALL DIVS	DIVS to Helco/ATGS	
		Tx	166.6000	NONE					
14	A/G (SECONDARY) TAC	Rx	164.6000	NONE		N	ALL DIVS	Bucket Operations	
		Tx	164.6000	NONE					
15	MEDNET	Rx	155.3400	NONE		N	ALL DIVS	Medical	
		Tx	155.3400	NONE					
16	AIRGUARD	Rx	168.6250	NONE		N	ALL DIVS	Emergency Air Contact	
		Tx	168.6250	110.9					

5. Prepared by (Communications Unit)
 Todd Bellefeuille, COML

CONTROLLED UNCLASSIFIED INFORMATION

INCIDENT RADIO COMMUNICATIONS PLAN		1. Incident Name		2. Date/ Time Prepared		3. Operational Period Date/Time	
		SLATER NORTH IA		10/17/2020 1800		10/18/2020 0700-1900	
Mode: W=Wideband Analog, N=Narrowband Analog, D=Digital, M=Mixed							
Channel	DISPLAY	Frequency	Tone	Mode	Assignment	Remarks	
1	ODFLTGRY	Rx	151.1450	NONE	N	GRAYBACK RPTR	
		Tx	159.2850	151.4			
2	ODF RED	Rx	151.3400	NONE	N	ODF RED TAC	
		Tx	151.3400	156.7			
3	ODF WHT	Rx	151.3100	NONE	N	ODF WHITE A/G	
		Tx	151.3100	156.7			
4	KLNFORNG	Rx	172.2750	NONE	N	SLATER RPT	
		Tx	164.7000	114.8			
5	SIX NF	Rx	172.3750	NONE	N	MONKEY RIDGE RPTR	
		Tx	164.1750	110.9			
6	ROG ADM	Rx	169.9750	67.0	N	WHISKY RPTR	
		Tx	164.9375	173.8			
7	ONION	Rx	171.3875	67.0	N	NORTH HALF OF WILD RIVERS RD	
		Tx	164.9625	173.8			
8	BOLAN	Rx	171.3875	67.0	N	SOUTH HALF OF WILD RIVERS RD	
		Tx	164.9625	186.2			
9	FIDDLER	Rx	171.3875	67.0	N	WEST HALF OF WILD RIVER RD	
		Tx	164.9625	179.9			
10	RSF TAC	Rx	167.4250	67.0	N	ROGUE SISKIYOU TAC	
		Tx	167.4250	67.0			
11	RV TAC 2	Rx	159.2400	156.7	N	ROGUE VALLEY (ODF NCIS-2)	
		Tx	159.2400	156.7			
12	RV TAC 3	Rx	153.8300	141.3	N	ROGUE VALLEY TAC 3	
		Tx	153.8300	141.3			
13	A/G 51	Rx	168.3125	NONE	N	WILD RIVERS FIRE	
		Tx	168.3125	NONE			
14	A/G 62	Rx	169.3625	NONE	N	APLEGATE FIRE	
		Tx	169.3625	NONE			
15	MEDNET	Rx	155.3400	NONE	N	MEDICAL	
		Tx	155.3400	NONE			
16	AIRGUARD	Rx	168.6250	NONE	N	EMERGENCY AIR CONTACT	
		Tx	168.6250	110.9			
5. Prepared by (Communications Unit) Todd Bellefeuille, COML							
CONTROLLED UNCLASSIFIED INFORMATION							

SLATER & DEVIL FIRES PHONE LIST

SECTION	NAME	POSITION	CELL PHONE	ICP PHONE NUMBER	ICP FAX NUMBER
COMMAND					
	<i>IC</i> ERIC KNERR	ICT2	(541) 219-1172		
	<i>IC</i> BRENT MEISINGER	ICT2(T)	(541)-219-6031		
	<i>SAFETY</i> MATT BROYLES	SOF2	(541)-891-7982		
	<i>SAFETY</i> TYSON ALBRECHT	SOF2	(541)-519-3636		
	<i>LIAISON</i> DONALD JORDAN	LOFR	(541)-771-2083		
	<i>INFORMATION</i> JENNIFER O'LEARY	PIO	(541)-222-9241		
	<i>HEALTH LIAISON</i> BRAD HENNING		(253)-224-5085		
OPERATIONS					
	<i>OPS CHIEF</i> CHRIS ORR	LEAD OPS	(530)-640-1464		
	<i>OPS CHIEF</i> TREVOR WALLACE	FIELD OPS/BRANCH	(541)-450-1133		
	<i>OPS CHIEF</i> NATE LeFEVRE	PLANNING OPS	(541)-255-6595		
	<i>AIR OPS</i> TED HASS	AOBD	(541)-646-1318		
	<i>AIR OPS</i> STEVE MIZIKOWSKI	AOBD	(541)-580-5210		
PLANNING					
	<i>PLANS CHIEF</i> NATALIE SIMRELL	PSC2	(541)-941-4164		
	<i>PLANS CHIEF</i> MIKE CRAWFORD	PSC2(T)	(458)-212-0501		
	<i>RESL</i> MARLIN POSE	RESL	(541)-941-9288		
	<i>DEMOB</i> ANDREW LACEY	DMOB	(541)-215-5370		
	<i>CHECKIN</i> RACHEL NOONAN	SCKN	(360)-529-6869		
LOGISTICS					
	<i>LOGS CHIEF</i> STEFEN MAUPIN	LSC2	(541)-212-9869		
	<i>DEPUTY</i> MAX YAGER	DLSC	(541)-690-6627		
	<i>FACILITIES</i> SHELLY PACHECO	FACL	(575)-921-3415		
	<i>SUPPLY</i> CLARENCE ADAMS	SUPL	(541)-817-9704		
	<i>GROUND SUPPORT</i> JEFF ALLRED	GSUL	(541)-297-3075		
	<i>COMMUNICATIONS</i> TODD BELLEFEUILLE	COML	(509)-991-9769		
	<i>MEDICAL UNIT</i> CARL VARAK	MEDL	(530)-643-3799		
	<i>FOOD</i> GARY EDWARDS	FDUL	(530)-339-2244		
	<i>SECURITY</i> JIM MURRAY	SECM	(541)-784-5735		
FINANCE					
	<i>FINANCE CHIEF</i> ANDREA ANDRESEN	FSC2	(530)-375-7205		
	<i>FINANCE CHIEF</i> PATTY WESTGATE	FSC2	(541)-892-8432		
	<i>TIME</i> BEV HOLLARS	TIME	(541)-255-5738		
	<i>PROCUREMENT</i> AUDREY MAINWARING	PROC	(206)-949-0137		
	<i>COMP/CLAIMS</i> KELLY LORENZ	COMP	(541)-350-7000		
	<i>COST UNIT</i> DOUG BRIGHT	COST	(541)-891-2543		
EXPANDED DISPATCH KLAMATH NF					
	<i>SUPERVISOR</i> MIKE PURDY	DISPATCHER	(530)-841-4645		
	<i>SUPPLIES</i>		(530)-841-4675		
	<i>EQUIPMENT</i>		(530)-841-4676		
	<i>OVERHEAD</i>		(530)-841-4674		
	<i>CREWS</i>		(530)-841-4633		
	<i>EQUIPMENT/VIPER</i> JAYNE		(530)-863-3211		

Incident: Slater and Devil

Date: 10/18/2020

Shift: Day



SAFETY MESSAGE

SAFETY IS OUR FIRST PRIORITY

Firefighter safety comes first on every fire, every time



SAFETY THOUGHT

CHOICES

The choices that you make- minute by minute- have a lot to do with your own safety. Please choose wisely. Choose to wear your hardhat and other PPE. Choose to insist on a good briefing- ask questions if something is unclear. Choose to stop and analyze risks and seek and apply mitigations (see IRPG pg. 1 for risk management process). If mitigation is insufficient, choose to turn down assignments that you are not comfortable with. See IRPG pgs. 19-20 for how to turn down an assignment correctly.

Let's CHOOSE to Finish This Assignment Strong And Safe!



No Hot Rods!

Emergency Helicopter Landing Area Selection

- Reasonably flat area clear of people, vehicles, and obstructions such as trees, poles, and overhead wires.
 - The area must be free of stumps, brush, posts, large rocks, and anything over 18 inches high.
 - Wind direction - Helicopters land and take off into the wind. Choose an approach free of obstructions.
 - Any obstruction should be relayed to the helicopter crew on initial radio contact.
 - Remove or secure any loose items in and around the landing area- trash, blankets, hats, or equipment.
 - Wet down the landing area if dusty conditions are present.
 - Address LCES prior to staffing existing or proposed helicopter landing areas.
- Type II Helicopters: - Safety circle: 90' diameter- Touchdown pad: 20' x 20', clear and level
- Type III Helicopters: - Safety circle: 75' diameter - Touchdown Pad: 15' x 15' clear and level

Incident Safety Officers: Matt Broyles (ICP), Eric Brown (OR-FOB – Selmac- Divs. P, T/U, North Happy Camp Hwy. group), Tyson Albrecht (CA-FOB- Happy Camp, Divs. F/W/Z, South Happy Camp Road Group) Jon Lee (OR-FOB – Selmac- Divs. D, M/G,)

Traffic Control Plan for Happy Camp Highway Part 1- applicable during scheduled closures. See Part 2 for closure periods.

The fire incident managed tree removal operation along the Happy Camp Highway/Grayback road (the Road) will proceed only at a pace that allows the following measures necessary to ensure a safe work area for all. The DIVS on scene is authorized to temporarily shut down the operation- in part or in whole- if necessary, to address a safety concern or non-compliance with the following measures.

1. The fire incident tree removal operation will establish daily work area(s) along the Road. All fire incident tree removal operations that could impact the Road will be conducted only within the defined and marked work area(s).
2. Dedicated road guards with no other duties and having communications with each other, and with the TFLD in charge of the equipment and fallers will be used. A traffic cone or other identifiable marker will be placed at each end of the work area(s).
3. All side roads connecting to the Road within the work area(s) will be physically blocked and/or staffed by a road guard with radio contacts as described above.
4. Vehicles will not enter the work area during the closure periods without first checking in with a road guard.
5. Any vehicle requesting medical emergency or major line strike response access into the closed work area, or on a previously approved mission, will approach the road guard at a low rate of speed, and stop, and clearly communicate their intentions to the road guard.
6. The road guard will read the following script to the driver:
 - a. Do not proceed until I tell you to.
 - b. What is your name? and What is your mission?
7. If the mission is a medical emergency, major line strike response, or a previously approved mission, the road guard will communicate the need to shut down tree removal operations to the Division Supervisor (DIVS) and hold the vehicle until an all clear to proceed is received from the DIVS.
8. When all clear is received the road guard will then tell the driver:
 - a. You are clear to proceed. You are authorized only to proceed directly to _____ were you will check out with a road guard like me.
 - b. You are not authorized to exit the work area other than at a location with a road guard like me.
 - c. You are not authorized to stop in the work area except for emergencies.
9. Tree removal operations **will not resume** until a road guard confirms that the vehicle described has exited the work area.
10. If the name/mission given is not a medical emergency, or a major line strike response, or a previously approved mission, the road guard will hold the traffic until a regularly scheduled open time; see Part 2.

Traffic Control Plan for Happy Camp Highway Part 2 - Closure Schedule and Exempted Traffic

Road Closure Schedule

0900-1200 CLOSED
1200-1300 open
1300-1700 CLOSED
1700-0900 open

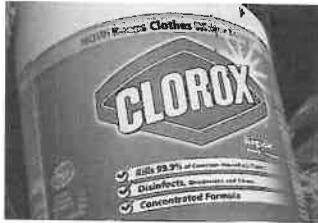
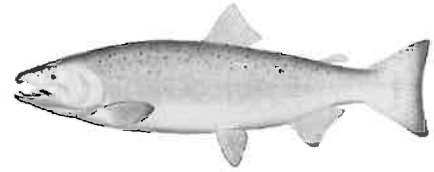
Traffic Exempted From Closure During Closed Periods:

1. **Medical Emergency Traffic** or personnel responding to a **major powerline strike** will be allowed passage through the work area as soon as the road can be rapidly cleared.
2. **Rare, Pre- arranged Exemptions as Follows:**
 - a. Exemptions must be pre-arranged the day prior or before by contacting the Incident Management Team liaison via the following email address and requesting a specific exemption for a specific time and for specific traffic.
slaterdevilliaison@gmail.com
 - b. Liaison will communicate the request to Incident Commander for consideration.
 - c. Liaison will communicate approval or non- approval to the requestor.
 - d. If approved, Liaison will communicate approved request to Operations so the approved traffic can be planned for, and road guards notified prior to shift.

Slater Incident – North Zone: Resource Advisor Message

Fish Screens: Coho Salmon Critical Habitat

Most rivers and streams in this area are considered critical habitat for Threatened Coho salmon. Please ensure that Mark 3 and Engine/Tender suction hoses have the appropriate screen attached. Talk to a READ if you think you need a screen!



Port Orford Cedar root disease

Some local drainages are infected with a root disease that spreads via mud and water. To prevent spreading this disease to uninfected areas, all water tenders and engines will apply bleach to their tanks in a 1 to 1000 ratio (using bleach with 6.0 % Sodium hypochlorite). Talk to a READ if you need some bleach!

Invasive Yellow-tuft (Alyssum)

Please do not park in or drive through the flagged off area at the mill-site briefing area. There is an introduced plant in this area that spreads aggressively in the serpentine areas in the Illinois Valley. Most invasive plants do not spread into



serpentine soils. Serpentine soils are home to rare plants that only grow here in the Illinois Valley. This invasive plant does threaten those unique plants. The READs would appreciate people utilizing the weed wash when they can, especially if they've been



working or parking near the IV Airport. Don't know what serpentine is? Not sure if you should hit the weed wash? Ask a READ!

READ Water-bar Guidance

When locating and building water bars, place them the right **distance** apart, at a **diagonal** to the fireline, so that they **divert**, then **discharge**, then **dissipate** the energy of the flowing water. Be sure to make them deep enough so they'll be durable, and that soil does **not block** the water bar outlet.

Distance: To ensure that excess runoff cannot accumulate, waterbars must be placed the proper distance apart, based on the slope of the fireline. This breaks up the area that accumulates runoff, keeping it small enough to prevent damage. Erosion potential depends on slope and a table is provided on the next page that gives the maximum distance between waterbars, or between a waterbar and the next upslope drainage break.

Diagonal: A diagonal waterbar has a gentle slope along its base that leads the water off. Build them at 15-30 degrees from horizontal and drained away from the fire burned area if possible

Divert: A good waterbar will divert the water off the fireline. To do this the waterbar must be sufficiently deep to handle all the flow for as long as it's needed. Excavation is much more effective than fill in making a durable and effective waterbar (a ditch or a dip beats a dike)

Discharge: A good waterbar is not a dam – it must have an open outlet.

Dissipate: A good waterbar should dissipate the flow just below the outlet to exhaust its eroding power and cause it to filter into the soil. This may require placing slash, rock, or debris below the outlet, or fudging a bit on distance to take advantage of natural features that will dissipate the water's erosive energy.

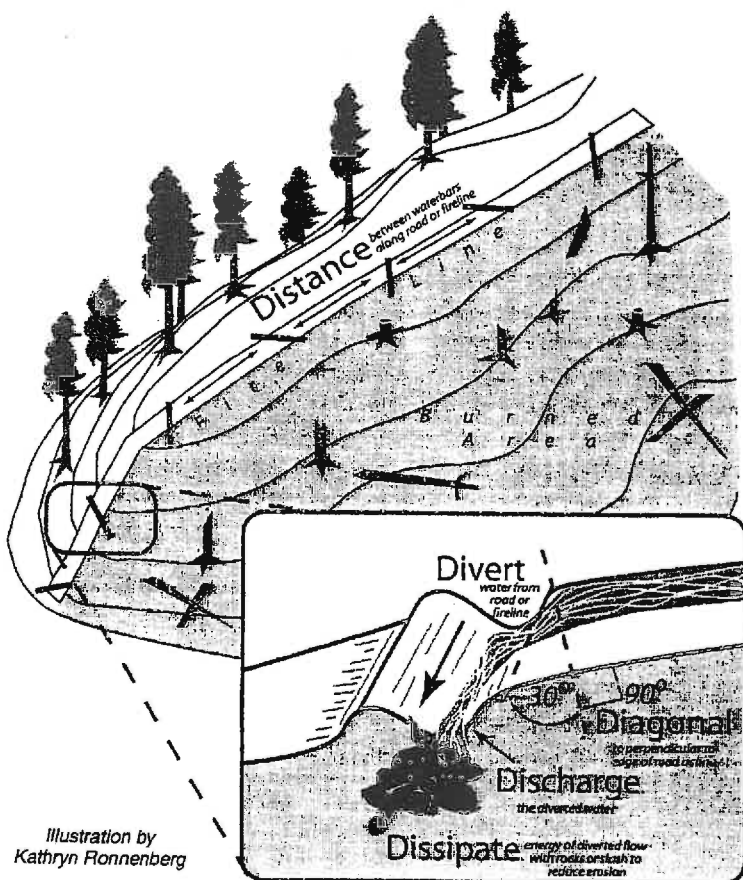


Illustration by
Kathryn Ronnenberg

Fireline slope %	Maximum Distance Apart (feet)
1-5	200
6-20	125
21-40	60
41-60	40
>60	25

Finance Message

- All CTR's with hazard pay must have a justification in the remarks section. The justification needs to be more substantial than, "Uncontrolled fire". Were you fighting fire on uncontrolled fire line? Were you scouting? Were you patrolling for spot fires? Were you attaching a load to a hovering helicopter?

**From the Interagency Incident Business Management Handbook*

Criteria for Entitlement to Hazardous Pay Differential for Irregular and Intermittent Hazardous Duties (5 CFR 550.904)

Full-time, part-time, and intermittent GS employees are eligible for hazard pay differential computed at 25 percent of the base rate when performing duties specified below.

Any member of the incident fire suppression organization is eligible for hazard pay while carrying out assigned duties, if hazard pay criteria, as described below, are met. Incident supervisors must manage for the appropriate application of the authority.

- Firefighting – Participating as a member of a firefighting crew in fighting forest and range fires on the fireline before the fire is controlled. This includes single resource personnel assigned to the fireline. Personnel assigned firefighting duties are not entitled to hazard pay after the declaration of an official control time and date.

This does not include personnel engaged in logistical support, service, and non-suppression activities, e.g., media tours to the fireline, incident personnel driving to the fire to observe activities, drivers delivering tools or personnel (Appendix B – hazard/environmental pay matrix).

- Flying – Individuals, except pilots, who are participating in limited control flights.

Hazard pay for flying activities is related to the use of the aircraft, not the work of the occupants. If the flight is undertaken under unusual and adverse conditions which threaten or severely limit control of the aircraft, then hazard pay is warranted. Hazard pay is not authorized for situations such as flying passengers from a work center to a location to fix equipment when there are no adverse conditions that threaten or severely limit the aircraft.

- Groundwork Beneath Hovering Helicopter – Participating in ground operations to attach an external load to a helicopter hovering just overhead.
- Work in rough and remote terrain – Working on cliffs, narrow ledges, or near vertical mountainous slopes where a loss of footing would result in serious injury or death, or when working in areas where there is danger of rock falls or avalanches.

Burned Area Emergency Response (assessment or implementation) does not meet the definition of firefighting for hazard pay eligibility; however, hazard pay criteria listed above may apply.

Prescribed fire does not meet fireline hazard definition for hazard pay; however, hazard pay criteria listed above may apply.

TIME Instructions

*Due to Covid-19 safety precautions and the physical distance of resource locations, virtual procedures and approvals will be used in lieu of paper copies.

ODF resources ordered under Illinois Valley Support Incident (OR-712S-047521)

- Submit time by completing a CTR/shift ticket, get supervisor signature, then take a clear picture of the document. Email the signed CTR or Shift Ticket to 2020.slater.finance.north@firenet.gov. The subject line should read "ODF Time". Slater finance will forward your time to ODF Illinois Valley Finance personnel.
- If you have questions, please call ODF finance at 541-474-3152.

LFS resources ordered under RSF Large Fire Support Incident (OR-RSF-000001)

- Continue to submit your time as directed by RSF Large Fire Support finance personnel. Please **do not** send your time to Slater Finance.
- For questions please call 541-592-4002 or 541-589-2142.

Slater resources ordered under Slater Incident (CA-KNF-007035)

- Submit time by completing a CTR/shift ticket, get supervisor signature, then take a clear picture of the document. Email the signed CTR or Shift Ticket to 2020.slater.finance.north@firenet.gov. The subject line should read "Time".
- Electronic time forms are available at https://linktr.ee/slater_incident or by scanning the universal Slater QR code.
- If you have questions for Slater Finance call 541-255-5738.

***All Resources:** If you are doing suppression repair work, please note on your CTR that you are doing repair work and the jurisdiction of the land you are working on for that shift.

SLATER FIRE CHECK-IN PROCEDURES

For New Resources, Operator Swaps, & Crew Swaps

1. All contracted resources need an inspection before moving to the next step. Call Ground Support at:

847-946-8847

2. Email The Following Documents:

To: 2020.slater.plans.north@firenet.gov

Subject: (Your Resource Order Number)

- **Manifest** (crews and engines)
- **Resource order** (crews, equipment, and overhead)
- **Red cards** (crews, equipment, and overhead)
- **Casual hire form** (A.D. resources)
- **Contractor agreement** (pgs. 1-3)

3. Fill Out The Check-In Form: https://linktr.ee/slater_incident



4. Wait for confirmation that you are checked-in. Check-In will provide instructions for how to contact your supervisor.

5. If you have not been contacted within 2 hours of initially emailing your paperwork or need help with steps 1-3 call:

847-946-6416

SLATER DEMOB PROCEDURE/CHECK OUT SHEET

C# / E# / O# _____ Name of Resource _____

Phone # _____ Email for timesheet _____

For resources not scheduled to demob as listed in the IAP, complete name and signature below.

Incident Supervisor Name: _____

Incident Supervisor Signature: _____

- _____ 1. All resources wash vehicles
- Happy Camp resources get a token from Chuck House-Logs, and self-wash.
 - All other resources proceed to weed wash.

Happy Camp resources complete steps 2-5 with Chuck House-Logs. All other resources call 541-423-2631 to schedule demob.

- _____ 2. Ground support (contracted resources only)
- _____ 3. Supply Unit
- _____ 4. Communications
- _____ 5. Documentation (inspections, CTR's, Shift Tickets, evaluations, etc.)
- _____ 6. Slater Resources call Finance at 541-255-5738

Return Travel Info

Departure Date and Time _____

Rest Overnight Location(s) _____

Estimated Arrival Date and Time _____

E number of vehicle (if applicable) _____

- Personnel at Kiosk will email CTRs/Shift tickets, inspections, other documentation and completed checkout sheet to the email addresses below.

****Indicate resource type "ODF" or "LFS" or "Slater" and Resource Order# in subject line**

****ODF and LFS resources will continue using current payroll processes.**

- Resources do NOT need to remain at incident to receive pay documents. Finance will email pay documents once CTR's/Shift Tickets have been posted.

2020.slater.finance.north@firenet.gov

2020.slater.dmob.north@firenet.gov

Finance Phone number: 541-255-5738

DEMOB Phone number: 541-215-5370

YOUR DEMOB IS NOT COMPLETE UNTIL YOUR CHECKOUT SHEET IS SUBMITTED

Updated 10/15

Slater Tentative Releases

10/18/2020

EQUIPMENT

E-70047	(ENG4)	LFS E-47 ENG4 EYE OF THE
E-80044	(EXCA)	ODF E-44 STEPHEN STARK

OVERHEAD

O-20218	(HECM)	DUNCAN, PARKER J
O-1077	(HECM)	ROCK, BENJAMIN GEORGE
O-20318	(SEC2)	SEMBLANTE, ROBERT
O-1093	(SEC1)	WHITE, ETHAN
O-20219	(HECM)	COLEMAN, KALVIN
O-386.13	(RCDM)	CUNNINGHAM, VICKI S
O-286	(READ)	DALY, BENJAMIN E
O-20295	(HMGB)	FRICK, KENNETH R
O-20312	(SEC1)	HUMPHREYS, SAMUEL TIMOTHY
O-386.78	(LOFR)	MARTIN, PAMELA J

10/19/2020

AIRCRAFT

A-114	(HEL3)	HELICOPTER - T3 STANDARD -
-------	--------	----------------------------

OVERHEAD

O-20319	(SCKN)	CUELLAR, TOM
O-20186	(COMT)	GUIJARRO, ERNESTO
O-386.8	(PROC)	MAINWARING, AUDREY
O-20316	(SEC1)	SNEAD, NATHAN J
O-20231	(HECM)	GRANT, MICHAEL DAMONE
O-20296	(SECM)	JOHNSON, LUKE

10/20/2020

OVERHEAD

O-20203	(EMPF)	MCDONAGH, PENELOPE A
O-20238	(HECM)	REDDY, KRYSTAL A



MESSAGE FROM LOGISTICS

Sunday, October 18th, 2020

Facility Hours:	2200 - 0530	Quiet Hours
Meals:	0530 – 0900	Breakfast
	1800 – 2100	Dinner

Dinner Menu: Beef Burger or Veggie Burger, Baked Beans, Corn Chuckwagon, French Fries, Wheat Roll, Salad and Fudge Brownies.

Showers: 0500 - 2200

Showers will be closed for cleaning from **1200 – 1400**

Laundry Unit: 0700 - 2200

Medical Unit: 0530 – 2200

Supply Unit: 0600 – 2200

Communications Unit: 0530 - 2200

North Zone Fallers (Saw Shop): 0600 - 2200

Weed Wash Station @ DP 50: 0700 - 1900

Weed Wash will be closed for cleaning **1200 – 1300**
All demobilizing resources will need to weed wash.

****Lost and Found items are located in Security at Lake Selmac****

Please help us out with our Recycling Program!
Please separate cardboard, paper and clear plastic water bottles
with readable labels, and return to designated recycle areas.

Thank You and Have a Safe Shift!!

POSITION	MNEMONIC	NAME	PHONE #
Logistics Section Chief Type 2	LSC2	Max Yager	541-690-6627
Logistics Section Chief Type 2	LSC2	Stefen Maupin	541-212-9869
Logistics Section Chief Type 2	LSC2 (T)	Michael Ramsey	541-891-9653
Facilities Unit Leader	FACL	Shelly Pacheco	(575)-921-3415
Base Camp Manager	BCMG	Pete Osipovich	541-761-0957
Supply Unit Leader	SUPL	Clarence Adams	541-817-9704
Receiving/Distribution Mgr.	RCDM	Vicki Cunningham	503-939-1216
Ordering Manager	ORDM (T)	Kathy Sturm	541-659-7310
Food Unit Leader	FDUL	Gary Edwards	530-339-2244
Communications Unit Leader	COML	Todd Bellefeuille	509-991-9769
Communications Tech	COMT	Mike Merrick	425-327-1462
Medical Unit Leader	MEDL	Carl Varak	530-643-3799
Medical Unit Leader (COVID Response)	MEDL	Brad Henning	253-224-5085
Ground Support Unit Leader	GSUL	Jeff Allred	541-297-3075
Ground Support Unit Leader	GSUL (T)	Casey Glade	435-704-4702
Security Manager	SECM	Jim Murray	541-784-5735
Ordering Email: slaternorthzoneordering@gmail.com			

NW Team 7 Logistics Contact List

Updated 10/17/20

WILDLAND FIRE COVID-19 SCREENING TOOL

Today or in the past 24 hours, have you had any of the following symptoms¹?

Symptom
Cough more than expected?
Shortness of breath or difficulty breathing?
Fever? Chills?
Muscle pain, outside your normal for firefighting?
Sore throat?
New loss of taste or smell?
Fatigue, outside your normal for firefighting?
Headache, outside your normal for firefighting?
Congestion or runny nose, outside your normal for firefighting?
Nausea or vomiting
Diarrhea
<i>* Take temperature with no-touch thermometer, if available *</i>

Instructions for Screening

Item	What to Do
If resource has a cough that is more than expected, shortness of breath or difficulty breathing, or any other symptoms listed.	DO NOT MOBILIZE
At Entries: Consider adequate number of personnel needed for screening. Although medical personnel are ideal, screeners do not have to be medically trained. If resource has cough, shortness of breath or difficulty breathing, or any other listed symptoms including fever (over 100.4) at entry.	DO NOT ANNOUNCE Ask individual to step aside and follow the steps below.

Steps to follow
Escort symptomatic individual to isolation area.
Isolation support personnel should begin documentation.
Have symptomatic individual contact Supervisor for further direction.
Notify public health officials.
Have individual transported as appropriate.
Protect and secure any collected Personal Identifiable Information (PII) or Personal Health Information (PHI).

¹ Symptoms of Coronavirus
<https://www.cdc.gov/coronavirus/2019-ncov/symptoms-testing/symptoms.html>

MEDICAL PLAN (ICS 206 WF)

Controlled Unclassified Information//Basic

1. Incident/Project Name		2. Operational Period						
Slater Fire / Devil Fire		Date/Time 10/18/2020 0700-1900						
3. Ambulance Services								
Name	Complete Address	Phone & EMS Frequency		Advanced Life Support (ALS) Yes/No				
Happy Camp Ambulance	Incident Ambulance Happy Camp, CA 911-YICC or 530-493-2643	Command Nite 530-5981549		X				
Del Norte Ambulance	Incident Ambulance Gasquet, CA Nights 541-868-4415	Command		X				
Front Line 1	Incident Ambulance	Command		X				
Mercy Flights-Ground	2020 Milligan Way, Medford, OR	541-858-2600		X				
AMR	911-Josephine County Dispatch	541-474-6303		X				
4. Air Ambulance Services								
Name	Phone	Type of Aircraft & Capability						
Mercy Flights	541-858-2600	Bell 407 Medford, OR ALS-NVG						
Jackson County Sheriff	911-541-774-6800	Multiple Platforms - Short Haul - NVG						
PHI or REACH	911-707-324-2400 530-351-7917	Agusta 109 - Brookings, OR - ALS-NVG						
Oregon National Guard California National Guard	541-620-8373 530-842-3515	Blackhawk- Hoist, day/night ops Blackhawk Hoist, day/night ops						
Short-haul Helicopter	530-841-4604							
5. Hospitals								
Name Complete Address	Degrees Decimal Minutes DD° MM.MMM' N - Lat DD° MM.MMM' W - Long		Travel Time Air Gnd		Phone	Helipad Yes No		Level of Care Facility
	Lat:							
Three Rivers Medical Center 500 SW Ramsey Ave, Grants Pass, OR	Long:	N 40 34.325	10 min	25 min	541-472-7081	<input checked="" type="checkbox"/>	<input type="checkbox"/>	Level 3
	VHF:	W 122 23.700						
		155.340 tx 155.340 rec MEDNET						
Asante Rogue Regional Medical Center 2825 E Barnett Rd Medford, OR	Lat:	42 19.079 N	15 min	40 min	541-789-7132	<input checked="" type="checkbox"/>	<input type="checkbox"/>	Level 2
	Long:	122 49.903 W						
	VHF:	155.340 tx 155.340 rec MEDNET						
Providence Medical Center 1111 Crater Lake Ave. Medford, OR	Lat:	42 19.070 N	15 min	40 min	541-201-4000	<input checked="" type="checkbox"/>	<input type="checkbox"/>	Level 3
	Long:	122 49.900 W						
	VHF:	155.340 tx 155.340 rec MEDNET						
Sutter Coast Hospital 800 Washington Blvd Crescent City, OR	Lat:	41 43.41 N	45 min	1 hr 52 min	707-464-8888	<input checked="" type="checkbox"/>	<input type="checkbox"/>	Level 4
	Long:	122 38.69 W						
	VHF:	155.340 tx 155.340 rec MEDNET						
Fairchild Medical Center 444 Bruce St. Yreka, CA	Lat:	41 43.198 N	30 min	2hrs	530-842-6292	<input checked="" type="checkbox"/>	<input type="checkbox"/>	Level 4
	Long:	122 38.76 W						
	VHF:	156.070 tx 156.070 rec CALCORD						
Legacy Emanuel Medical Center 2801 N Grantenbein Ave, Portland, OR	Lat:	45 32.59 N	1.5 hour	4 hr 27 min	503-413-2200	<input checked="" type="checkbox"/>	<input type="checkbox"/>	Level 1 Trauma/Burns
	Long:	122 40.16 W						
	VHF:	155.340 tx 155.340 rec						
U.C. Davis Medical Center 2315 Stockton Blvd. Sacramento, CA	Lat:	38 33.292 N	1.5 hour	6 hr	916-734-3790	<input checked="" type="checkbox"/>	<input type="checkbox"/>	Level 1 Trauma/Burns
	Long:	121 27.326 W						
	VHF:	Tx/Rec to Hosp. 155.340						

MEDICAL PLAN (ICS 206 WF)

Controlled Unclassified Information//Basic

1. Incident/Project Name		2. Operational Period		
5. Division Branch Group	Area Location Capability			
F/W/Z	EMS Responders & Capability:	Happy Camp Amb. Medic 23 ALS----Nick Harper EMTF		
	Equipment Available on Scene:	ALS Incident Ambulance--- EMTP/MTB BLS gear		
	Medical Emergency Channel:	Command		
	ETA for Ambulance to Scene:			
	Air:			
	Ground:			
	Approved Helispot:	H1	H2	
	Lat:	41 48.233 N	41 49.113 N	
	Long:	123 30.306 W	123 28.754 W	
	Repair Group A	EMS Responders & Capability:	<u>Terry Robinson EMTF</u>	
Equipment Available on Scene:		BLS gear		
Medical Emergency Channel:		Command		
ETA for Ambulance to Scene:				
Air:				
Ground:				
Approved Helispot:				
Lat:				
Long:				
Repair Group B		EMS Responders & Capability:	<u>Joel Toline EMTF</u>	
	Equipment Available on Scene:	BLS gear		
	Medical Emergency Channel:	Command		
	ETA for Ambulance to Scene:			
	Air:			
	Ground:			
	Approved Helispot:			
	Lat:			
	Long:			
	D	EMS Responders & Capability:	Summit Medics EMPF/EMTF	
Equipment Available on Scene:		ALS gear with UTV----BLS gear		
Medical Emergency Channel:		Command		
ETA for Ambulance to Scene:				
Air:				
Ground:				
Approved Helispot:		H-20	H-21	H-22
Lat:		41 55.574 N	41 55.048 N	41 59.343 N
Long:		123 44.711 W	123 39.032 W	123 38.993 W
G/M		EMS Responders & Capability:	Patrick Bennett EMTF -----Del Norte Ambulance EMPF/EMTF	
	Equipment Available on Scene:	ALS incident ambulance BLS gear		
	Medical Emergency Channel:	Command		
	ETA for Ambulance to Scene:			
	Air:			
	Ground:			
	Approved Helispot:	H-40	H-41	
	Lat:	42 0.310 N	41 59.075 N	
	Long:	123 45.485 W	123 46.110 W	
		EMS Responders & Capability:		
Equipment Available on Scene:				
Medical Emergency Channel:		Command		
ETA for Ambulance to Scene:				
Air:				
Ground:				
Approved Helispot:				
Lat:				
Long:				

MEDICAL PLAN (ICS 206 WF)

Controlled Unclassified Information//Basic

Incident/Project Name	Operational Period				
5. Division Branch Group	Area Location Capability				
P	EMS Responders & Capability:	Front Line 1 Ambulance EMPF/EMTF---Penny McDonagh EMPF---Lily Rockenbach			
	Equipment Available on Scene:	ALS incident amb.---BLS/ALS gear			
	Medical Emergency Channel:	Command			
	ETA for Ambulance to Scene:				
	Air:				
	Ground:				
	Approved Helispot:	H52			
	Lat:	42 0.381 N			
Long:	123 32.904 W				
T/U	EMS Responders & Capability:	<u>Erin Brown EMTF --- Highland Medics ---EMPF/EMTF</u>			
	Equipment Available on Scene:	ALS/ILS/BLS gear with UTV			
	Medical Emergency Channel:	Command			
	ETA for Ambulance to Scene:				
	Air:				
	Ground:				
	Approved Helispot:	H-60	H-61	H-63	H-59
	Lat:	42 6.251 N	42 2.794 N	42 2.852 N	42 5.445 N
Long:	123 23.809 W	123 25.899W	123 24.009 W	123 28.340 W	
Happy Camp Highway North	EMS Responders & Capability:	REMS w/ATV EMPF/EMTF			
	Equipment Available on Scene:	ALS gear with ATV and extraction equipment			
	Medical Emergency Channel:	Command			
	ETA for Ambulance to Scene:				
	Air:				
	Ground:				
	Approved Helispot:				
	Lat:				
Long:					
Happy Camp Highway South	EMS Responders & Capability:				
	Equipment Available on Scene:				
	Medical Emergency Channel:				
	ETA for Ambulance to Scene:				
	Air:				
	Ground:				
	Approved Helispot:				
	Lat:				
Long:					
FOB Lake Selmac	EMS Responders & Capability:	L. Seitz EMTB-----C. Varak EMTB-----AMR Ambulance			
	Equipment Available on Scene:	BLS gear ALS ambulance in Cave Junction			
	Medical Emergency Channel:	Command			
	ETA for Ambulance to Scene:				
	Air:				
	Ground:				
	Approved Helispot:				
	Lat:				
Long:					
1. Prepared By (Medical Unit Leader)		2. Date/Time	3. Reviewed By (Safety Officer)		4. Date/Time
/s/ Carl Varak		10/17/2020	/s/ Matt Broyles		10/17/2020

40

Dutch Creek/Andy Palmer Emergency Medical Evacuation Information 10/18/2020

Land line to communications tent at OR-FOB (Selmac) – 24/7 = (541) 423-2631

Ambulance – AMR (not incident assigned) on Highway 199 corridor = 911

Contact freq. for incident assigned ambulances = COMMAND

Contact freq. for non-incident ambo. for transfer- Oregon = MEDNET (Slater N. IA, CH. 15) Calif. = CALCORD (Slater S. IA, Ch. 15)

Location Name	Coordinates DD mm.mmm (degrees, decimal minutes)	Minutes to Grants Pass Three Rivers Med. Cent. by Ground	Minutes to Yreka Fairchild Med. Cent. by Ground-	Minutes to Medford Rogue Valley Med. Cent. by Ground-	Access by Ground Ambo. ?	Approved for Helo. Type-	Notes
OR-FOB (Selmac)	42 15.393 X 123 34.157	20 min.	N/A	50 minutes	Yes		30 min to IV helibase
I.V. helibase	42 06.216 X 123 40.945	45 min	N/A	1 hour 15 min	Yes	1,2,3	30 min. to OR- FOB
CA- FOB (Happy Camp)	41 47.727 X 123 22.157	2 hr 45 min.	1 hr 45 min.	2 hr 15 min	Yes		
DP-18	42 03.101 X 123 07.607	N/A	N/A	45 min	Yes		Air ambos. lands at Applegate Dam routinely- it is near DP-18.
Scott Valley helibase	41 33.470 X 122 51.300	N/A	25 min.	N/A	Yes	1,2,3	
Div. ROADS DP-51	42 01.438 X 123 34.474		N/A		Yes		15 min drive to DP-52
Div. ROADS DP-52 = H52	42 00.391 X 123 32.906	1 hr 5 min.	N/A	1 hr 40 min.	Yes	3	

Location Name	Coordinates DD_mm.mmm (degrees, decimal minutes)	Minutes to Grants Pass Three Rivers Med. Cent. by Ground	Minutes to Yreka Fairchild Med. Cent. by Ground-	Minutes to Medford Rogue Valley Med. Cent. by Ground-	Access by Ground Ambo. ?	Approved for Helo. Type-	Notes
Div. D confluence of Chicago and Illinois Creeks			N/A				UTV time to 18N07 RD. At DP -29 = 45 minutes
DP-23	41 56.022 X 123 40.686	1 hr. 40 min.	N/A	2 hr. 10 min			DP-23 drive to H-20 = 17 min. DP-23 drive to 199 = 20 min.
Div. D H-20	41 55.574 X 123 44.711	1 hr. 20 min.	N/A	1 hr. 50 min.			H-20 drive to Hwy 199 = 5 min. DP-43 drive to H-20 = 10 minutes
Div. D H-21	41 55.048 X 123 39.032	2 hr. 15 min.	N/A	2 hr. 45 min			H-21 To DP 26 driving = 20 min. H-21 drive to 199 = 1 hour
Div. D DP-26	41 55.082 X 123 40.783	2 hours	N/A	2 hr. 30 Min.			DP-26 driving to DP-23 = 15 min. DP-26 drive to 199 = 45 minutes
Div. D DP-29	41 56.870 X 123 39.215	1 hr. 45 min.	N/A	2 hr 15 min.	Yes		DP-29 to pavement at Waldo Road (DP-49) =45 Minutes
Div. G DP-43	41 56.372 X 123 45.169	1 hr 10 min.	N/A	1 hr. 40 min.			DP-43 drive to H-20 in D =10 minutes
Div. G DP-46	41 59.652 X 123 47.365	1 hour 15 minutes	N/A	1 hr 45 min.	Yes		To pavement on HWY 199 = 20 min. via lone Mountain. Road
Div. G DP-30	41 56.500 X 123 46.922	1 hr 35 min	N/A	2 hr. 5 min.	Yes		To DP 46 20 min

Dutch Creek/Andy Palmer Emergency Medical Evacuation Information 10/18/2020 PAGE 3

Location Name	Coordinates DD_mm.mmm (degrees, decimal minutes)	Minutes to Grants Pass Three Rivers Med. Cent. by Ground	Minutes to Yreka Fairchild Med. Cent. by Ground-	Minutes to Medford Rogue Valley Med. Cent. by Ground-	Access by Ground Ambo. ?	Approved for Helo. Type-	Notes
Div. M Trapper Gulch Rd. @ 199 Jct.	41 59.975 X 123 43.288		N/A		Yes		
Div. M Seaberg Rd. @ 199 Jct.	41 01.800 X 123 43.632		N/A		Yes		
Div. M Brown Rd. @ 199 Jct.	42 03.715 X 123 42.430	55 min.	N/A	1 hr. 25 min.	Yes		
Div. P DP-51	42 01.438 X 123 34.474	1 hr. 20 min.	N/A	1 hr. 50 min.	Yes		15 min. to Happy Camp HWY Jct. via. 4808 road
Div. T Draft site	42 03.385 X 123 31.540	1 hr. 25 min.	N/A	1 hr 55 min.			Drive time to DP-69 = 15 minutes
Div. T Handline	42 03.388 X 123 30.968	1 hr. 25 min.	N/A	1 hr 55 min.			Drive time to DP-68 = 10 minutes
Div. T Dozer line	42 03.858 X 123 30.070						
Div. U Galice Spike (foot access launch point only)	42 02.852 X 123 16.202		N/A				
Div. U H-62	42 02.178 X 123 20.719	N/A	N/A	N/A	No	2	H-62 to Galice Spike = 1 hour by foot.
Div. U H-63	42 05.282 X 123 25.244		N/A		No		H-63 to Jct 46 and 4612 road 1 hour

Dutch Creek/Andy Palmer Emergency Medical Evacuation Information 10/18/2020 PAGE 4

Location Name	Coordinates DD_m.m.mmm (degrees, decimal minutes)	Minutes to Grants Pass Three Rivers Med. Cent. by Ground	Minutes to Yreka Fairchild Med. Cent. by Ground-	Minutes to Medford Rogue Valley Med. Cent. by Ground-	Access by Ground Ambo. ?	Approved for Helo. Type-	Notes
Div. W DP-4 + handline	41 48.797 X 123 20.022	N/A	1 hr 30 min.	N/A	Yes		45 min foot transport to DP-4 from line. DP-4 drive to pavement at DP-98 = 8 minutes
Div. W Fort Goff Hike start point		N/A	1 hr 30 min.	N/A	??		Hike To fire edge- south edge of Devil fire. 45 minute hike up.
Div. W DP-98	41 51.680 X 123 18.592	N/A	1 hr 20 minutes				
Div. W Gravel Pit	41 52.597 X 123 19.912	N/A	1 hr 35 min.	N/A			Drive to end of 18N01 road = 10 minutes Drive time to pavement on HWY 96 @ DP-98 =13 min.
End of 18N01 road		N/A	1 hr, 45 minutes	N/A			Drive to DP-98 @ pavement on HWY 96 = 23 min.

Text updates and corrections to Safety Broyles at (541) 891-7982.

MEDICAL PLAN (ICS 206 WF)

Controlled Unclassified Information//Basic

Medical Incident Report

FOR A NON-EMERGENCY INCIDENT, WORK THROUGH CHAIN OF COMMAND TO REPORT AND TRANSPORT INJURED PERSONNEL AS NECESSARY.

FOR A MEDICAL EMERGENCY: IDENTIFY ON SCENE INCIDENT COMMANDER BY NAME AND POSITION AND ANNOUNCE "MEDICAL EMERGENCY" TO INITIATE RESPONSE FROM IMT COMMUNICATIONS/DISPATCH.

Use the following items to communicate situation to communications/dispatch.

- 1. CONTACT COMMUNICATIONS / DISPATCH** (Verify correct frequency prior to starting report)
Ex: "Communications, Div. Alpha. Stand-by for Emergency Traffic."
- 2. INCIDENT STATUS:** Provide incident summary (including number of patients) and command structure.
Ex: "Communications, I have a Red priority patient, unconscious, struck by a falling tree. Requesting air ambulance to Forest Road 1 at (Lat./Long.) This will be the Trout Meadow Medical, IC is TFLD Jones. EMT Smith is providing medical care."

Severity of Emergency / Transport Priority	<input type="checkbox"/> RED / PRIORITY 1 Life or limb threatening injury or illness. Evacuation need is IMMEDIATE Ex: Unconscious, difficulty breathing, bleeding severely, 2° – 3° burns more than 4 palm sizes, heat stroke, disoriented. <input type="checkbox"/> YELLOW / PRIORITY 2 Serious Injury or illness. Evacuation may be DELAYED if necessary. Ex: Significant trauma, unable to walk, 2° – 3° burns not more than 1-3 palm sizes. <input type="checkbox"/> GREEN / PRIORITY 3 Minor Injury or illness. Non-Emergency transport Ex: Sprains, strains, minor heat-related illness.	
Nature of Injury or Illness & Mechanism of Injury		Brief Summary of Injury or Illness (Ex: Unconscious, Struck by Falling Tree)
Transport Request		Air Ambulance / Short Haul/Hoist Ground Ambulance / Other
Patient Location		Descriptive Location & Lat. / Long. (WGS84)
Incident Name		Geographic Name + "Medical" (Ex: Trout Meadow Medical)
On-Scene Incident Commander		Name of on-scene IC of Incident within an Incident (Ex: TFLD Jones)
Patient Care		Name of Care Provider (Ex: EMT Smith)

3. INITIAL PATIENT ASSESSMENT: Complete this section for each patient as applicable (start with the most severe patient)

Patient Assessment: See IRPG page 106

Treatment:

4. TRANSPORT PLAN:

Evacuation Location (if different): (Descriptive Location (drop point, intersection, etc.) or Lat. / Long.) Patient's ETA to Evacuation Location:

Helispot / Extraction Site Size and Hazards:

5. ADDITIONAL RESOURCES / EQUIPMENT NEEDS:

Example: Paramedic/EMT, Crews, Immobilization Devices, AED, Oxygen, Trauma Bag, IV/Fluid(s), Splints, Rope rescue, Wheeled litter, HAZMAT, Extraction

6. COMMUNICATIONS: Identify State Air/Ground EMS Frequencies and Hospital Contacts as applicable

Function	Channel Name/Number	Receive (RX)	Tone/NAC *	Transmit (TX)	Tone/NAC *
COMMAND					
AIR-TO-GRND					
TACTICAL					

7. CONTINGENCY: Considerations: If primary options fail, what actions can be implemented in conjunction with primary evacuation method? Be thinking ahead.

8. ADDITIONAL INFORMATION: Updates/Changes, etc.

REMEMBER: Confirm ETA's of resources ordered. Act according to your level of training. Be Alert. Keep Calm. Think Clearly. Act Decisively.