

122°53'0"W

122°52'0"W

122°51'0"W

122°50'0"W

41°16'0"N

41°16'0"N

41°15'0"N

41°15'0"N

41°14'0"N

41°14'0"N

41°13'0"N

41°13'0"N

41°12'0"N

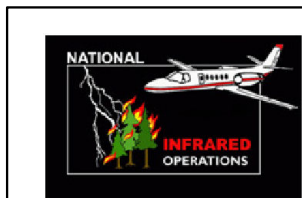
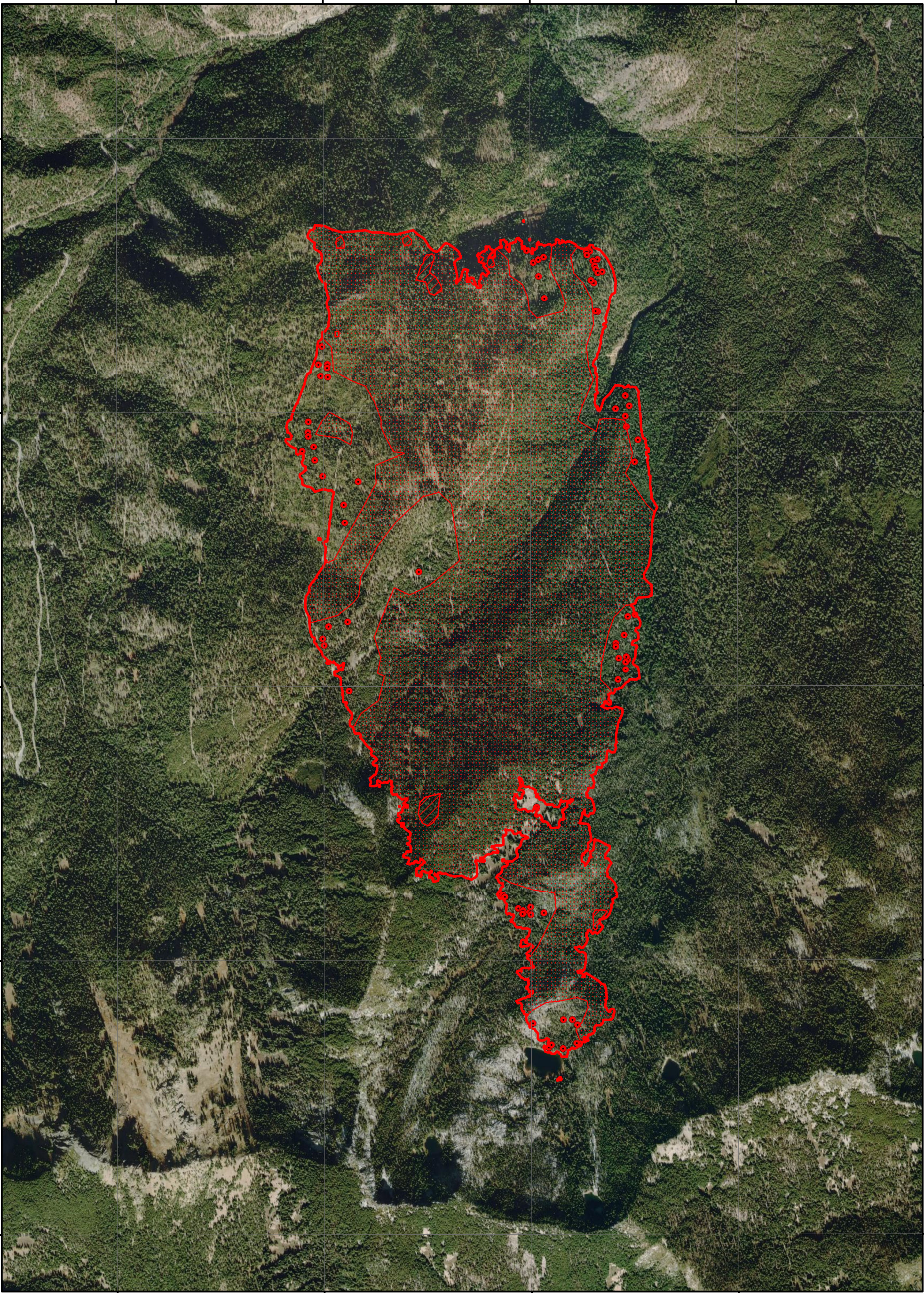
41°12'0"N

122°53'0"W

122°52'0"W





122°51'0"W

122°50'0"W



**INFRARED MAP**  
**Fox (CA-KNF-007241)**  
**Flight: September 25, 2020 @ 0135 MDT**  
**Acres - 2,174**  
**Change in Acres from Last GIS Layer - 2**  
**IRIN (t)- Steve Penny**

**Legend**

-  09/25/2020 0135 Fox IR Heat Perimeter
-  Intense Heat
-  Scattered Heat
-  Isolated Heat Sources

