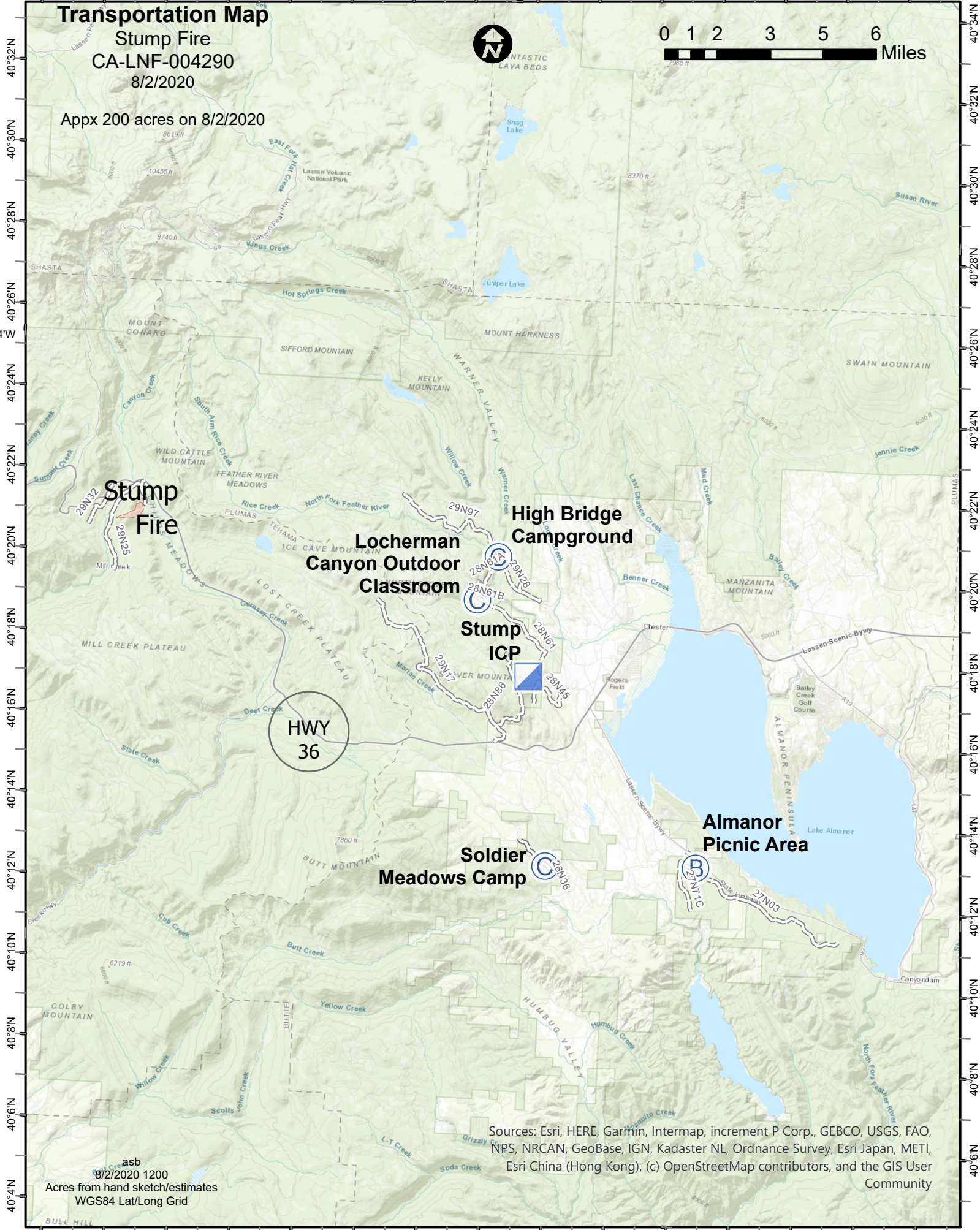
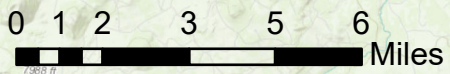


121°34'W 121°32'W 121°30'W 121°28'W 121°26'W 121°24'W 121°22'W 121°20'W 121°18'W 121°16'W 121°14'W 121°12'W 121°10'W 121°8'W 121°6'W

Transportation Map

Stump Fire
CA-LNF-004290
8/2/2020

Appx 200 acres on 8/2/2020



Stump Fire

Locherman Canyon Outdoor Classroom

Stump ICP

High Bridge Campground

Soldier Meadows Camp

Almanor Picnic Area

HWY 36

Sources: Esri, HERE, Garmin, Intermap, increment P Corp., GEBCO, USGS, FAO, NPS, NRCAN, GeoBase, IGN, Kadaster NL, Ordnance Survey, Esri Japan, METI, Esri China (Hong Kong), (c) OpenStreetMap contributors, and the GIS User Community

asb
8/2/2020 1200
Acres from hand sketch/estimates
WGS84 Lat/Long Grid

121°32'W 121°30'W 121°28'W 121°26'W 121°24'W 121°22'W 121°20'W 121°18'W 121°16'W 121°14'W 121°12'W 121°10'W 121°8'W 121°6'W