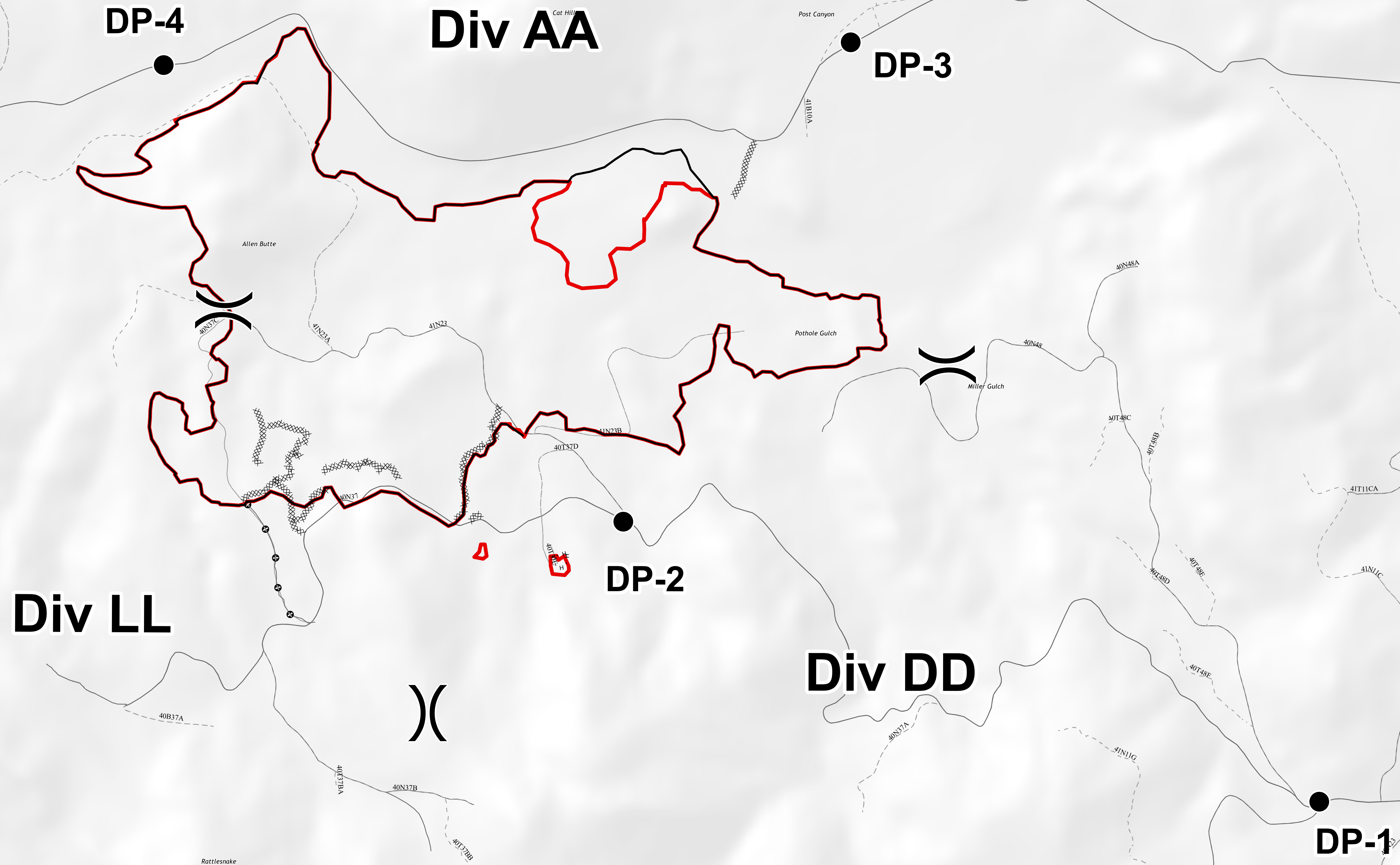


# BRANCH I



OPS-IR EAST  
Allen Fire  
CA-MDF-000487  
07/29/2020

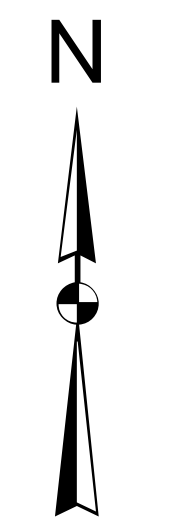
DISCLAIMER:  
The displayed incident data is approximate and should only be used for informational purposes. The information contained in supporting base layers was generated from GIS data maintained by different sources and agencies and is not necessarily accurate to mapping, surveying, or engineering standards.



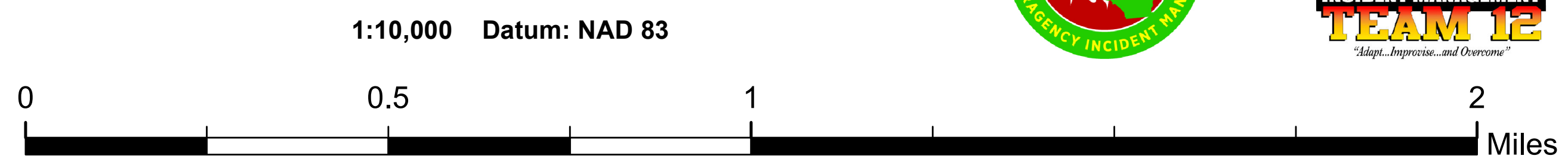
**OPS-IR EAST**  
**Allen Fire**  
CA-MDF-000487  
07/29/2020

**Legend**

- Drop Point
- Isolated Heat Sources
- ▨ Scattered Heat
- ▨ Intense Heat
- ▨ Heat Perimeter
- MSBuildingCtp
- Roadway
- Pipeline
- Transmission Lines
- Forest Service Boundary
- )( Division Break



OPS-IR  
ALLEN



Scale: 1:10,000 Datum: NAD 83