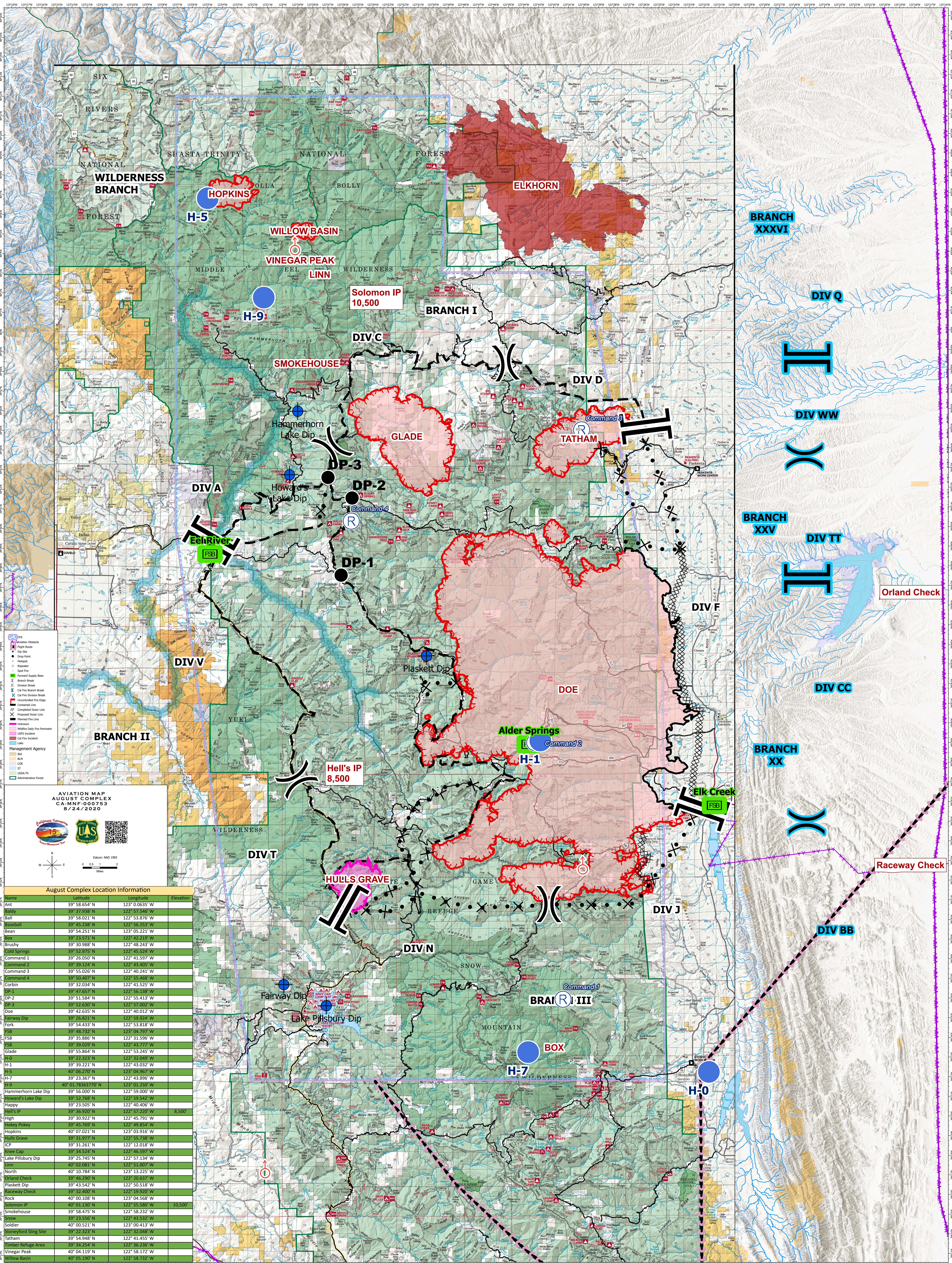


AVIATION MAP - AUGUST COMPLEX



AVIATION MAP
AUGUST COMPLEX
CA-MNF-000753
8/24/2020

Datum: NAD 1983
0 0.5 1 2
Miles

August Complex Location Information			
Name	Latitude	Longitude	Elevation
Ant	39° 58.654' N	123° 0.0635' W	
Baldy	39° 37.938' N	122° 57.546' W	
Ball	39° 58.021' N	122° 53.876' W	
Baseball	39° 45.238' N	122° 56.253' W	
Bean	39° 54.251' N	123° 05.221' W	
Beck	39° 38.218' N	122° 49.218' W	
Brushy	39° 30.988' N	122° 48.243' W	
Cold Springs	39° 52.975' N	122° 45.524' W	
Command 1	39° 26.050' N	122° 41.597' W	
Command 2	39° 39.124' N	122° 43.405' W	
Command 3	39° 55.026' N	122° 40.241' W	
Command 4	39° 50.407' N	122° 55.468' W	
Corbin	39° 32.034' N	122° 41.525' W	
DP-1	39° 47.657' N	122° 56.138' W	
DP-2	39° 51.584' N	122° 55.413' W	
DP-3	39° 52.630' N	122° 57.002' W	
Doe	39° 42.635' N	122° 40.012' W	
Fairway Dip	39° 26.821' N	122° 59.924' W	
Fork	39° 54.433' N	122° 53.818' W	
FSB	39° 48.732' N	122° 49.218' W	
FSB	39° 35.886' N	122° 31.596' W	
FSB	39° 39.029' N	122° 43.777' W	
H-0	39° 55.864' N	122° 53.245' W	
H-1	39° 22.323' N	122° 32.049' W	
H-1	39° 39.221' N	122° 43.032' W	
H-5	40° 06.270' N	123° 04.967' W	
H-7	39° 23.367' N	122° 43.896' W	
H-9	40° 01.7836370' N	123° 01.250' W	
Hammerhorn Lake Dip	39° 56.000' N	122° 59.000' W	
Howard's Lake Dip	39° 52.768' N	122° 59.542' W	
Happy	39° 23.505' N	122° 40.406' W	
Hell's IP	39° 36.920' N	122° 47.728' W	8,500
Holly Pokey	39° 45.768' N	122° 49.791' W	
Hopkins	40° 07.021' N	123° 03.916' W	
Hulls Grave	39° 31.977' N	122° 55.738' W	
ICP	39° 31.261' N	122° 12.018' W	
Knee Cap	39° 34.524' N	122° 46.597' W	
Lake Pillsbury Dip	39° 25.745' N	122° 57.134' W	
Linn	40° 02.081' N	122° 51.007' W	
North	40° 10.784' N	123° 13.225' W	
Orland Check	39° 46.290' N	122° 20.637' W	
Plaskett Dip	39° 43.542' N	122° 50.518' W	
Raceway Check	39° 32.400' N	122° 19.920' W	
Rock	40° 00.108' N	123° 04.568' W	
Solomon IP	39° 58.472' N	122° 58.232' W	10,500
Smokehouse	39° 23.556' N	122° 42.532' W	
Soldier	40° 00.521' N	123° 00.413' W	
Stoneyford Slings Site	39° 22.323' N	122° 32.048' W	
Tatham	39° 54.948' N	122° 41.455' W	
Timber Refuge Area	39° 34.254' N	122° 36.236' W	
Vinegar Peak	40° 04.119' N	122° 58.172' W	
Willow Basin	40° 05.190' N	122° 58.732' W	