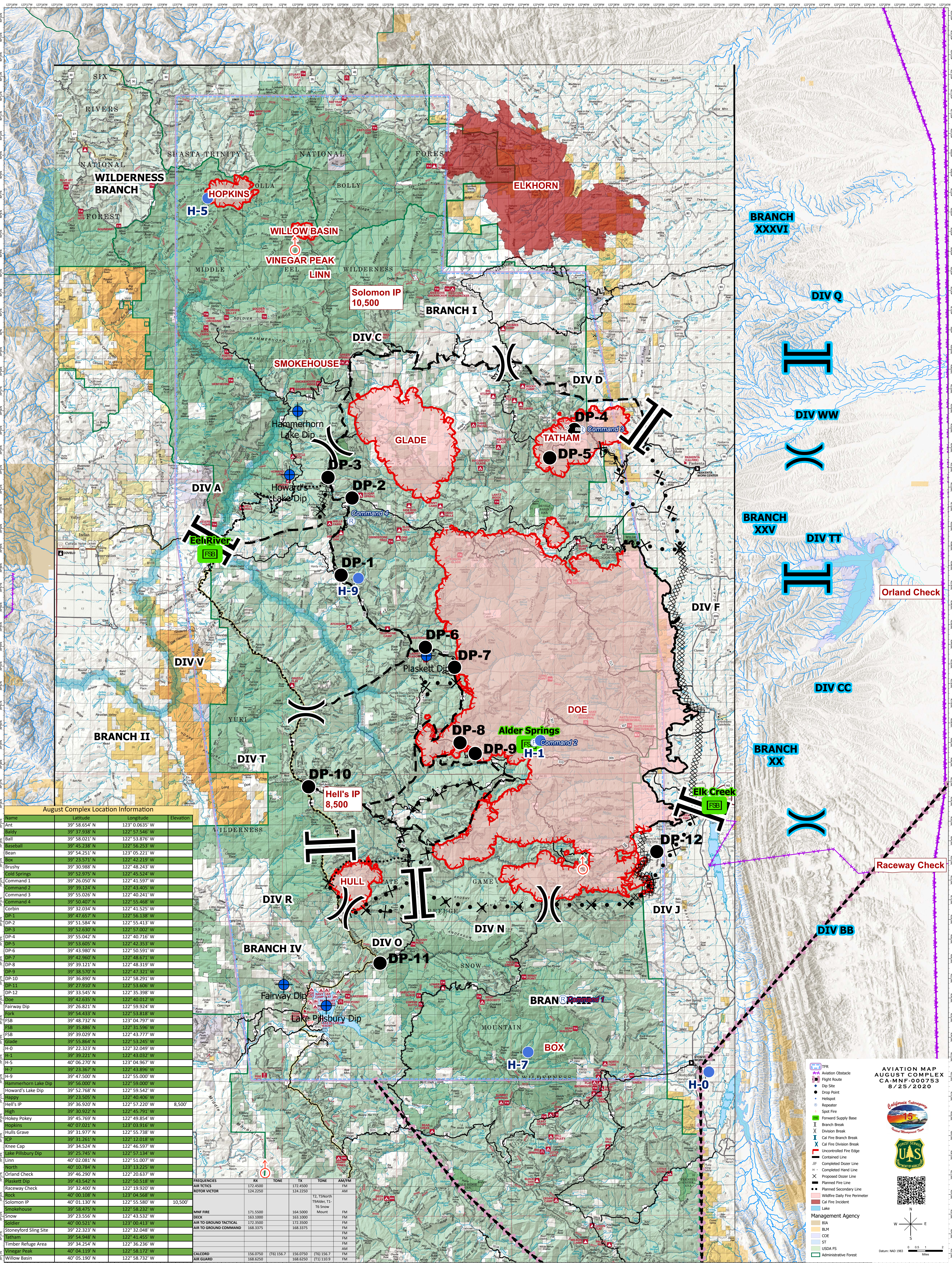


AVIATION MAP - AUGUST COMPLEX



August Complex Location Information

Name	Latitude	Longitude	Elevation
Ant	39° 58.654' N	123° 00.635' W	
Baldy	39° 37.938' N	122° 57.546' W	
Ball	39° 58.021' N	122° 53.876' W	
Baseball	39° 45.238' N	122° 56.253' W	
Bean	39° 54.251' N	123° 05.221' W	
Box	39° 23.571' N	122° 42.219' W	
Brushy	39° 30.988' N	122° 48.243' W	
Cold Springs	39° 22.975' N	122° 48.524' W	
Command 1	39° 26.050' N	122° 41.597' W	
Command 2	39° 30.724' N	122° 43.405' W	
Command 3	39° 55.026' N	122° 40.241' W	
Command 4	39° 50.407' N	122° 55.468' W	
Corbin	39° 32.034' N	122° 41.525' W	
DP-1	39° 47.657' N	122° 56.138' W	
DP-2	39° 51.584' N	122° 55.413' W	
DP-3	39° 52.630' N	122° 57.002' W	
DP-4	39° 55.042' N	122° 40.716' W	
DP-5	39° 53.605' N	122° 42.353' W	
DP-6	39° 43.980' N	122° 50.591' W	
DP-7	39° 42.360' N	122° 48.671' W	
DP-8	39° 39.121' N	122° 48.319' W	
DP-9	39° 38.570' N	122° 47.321' W	
DP-10	39° 36.890' N	122° 58.291' W	
DP-11	39° 27.910' N	122° 53.606' W	
DP-12	39° 33.545' N	122° 35.398' W	
Doe	39° 42.635' N	122° 40.012' W	
Fairway Dip	39° 26.821' N	122° 59.924' W	
Fork	39° 54.433' N	122° 53.818' W	
FSB	39° 48.732' N	123° 04.797' W	
FSB	39° 35.886' N	122° 31.596' W	
FSB	39° 39.029' N	122° 43.777' W	
Glade	39° 55.864' N	122° 53.245' W	
H-0	39° 23.323' N	122° 32.049' W	
H-1	39° 39.221' N	122° 43.032' W	
H-5	40° 06.270' N	123° 04.967' W	
H-7	39° 23.367' N	122° 43.896' W	
H-9	39° 47.500' N	122° 55.000' W	
Hammerhorn Lake Dip	39° 56.000' N	122° 59.000' W	
Howard's Lake Dip	39° 52.768' N	122° 59.542' W	
Happy	39° 23.505' N	122° 40.406' W	
Hell's IP	39° 36.920' N	122° 57.220' W	8,500
High	39° 40.922' N	122° 45.591' W	
Hokey Poky	39° 45.769' N	122° 49.854' W	
Hotlins	40° 07.023' N	122° 40.916' W	
Hulls Grave	39° 31.977' N	122° 55.738' W	
IP	39° 31.761' N	122° 12.018' W	
Knee Cap	39° 34.524' N	122° 46.597' W	
Lake Pillsbury Dip	39° 25.745' N	122° 57.134' W	
Linn	40° 02.081' N	122° 51.007' W	
North	40° 10.784' N	123° 13.225' W	
Orland Check	39° 46.290' N	122° 20.637' W	
Plaskett Dip	39° 43.542' N	122° 50.518' W	
Raceway Check	39° 32.400' N	122° 19.920' W	
Rock	40° 00.108' N	122° 04.568' W	
Solomon IP	40° 01.130' N	122° 55.580' W	10,500
Smokehouse	39° 58.475' N	122° 58.232' W	
Snow	39° 23.556' N	122° 43.532' W	
Soldier	40° 00.521' N	122° 00.413' W	
Stoneyford Sling Site	39° 22.323' N	122° 32.048' W	
Tatham	39° 54.948' N	122° 41.455' W	
Timber Refuge Area	39° 34.254' N	122° 36.236' W	
Vinegar Peak	40° 04.119' N	122° 58.172' W	
Willow Basin	40° 05.190' N	122° 58.732' W	

FREQUENCIES	RX	TX	AM/FM
AIR TACTICS	172.4500	172.4500	FM
ROTOR VICTOR	124.2250	124.2250	FM
MNF FIRE	171.5000	164.5000	FM
DECK	163.3000	163.3000	FM
AIR TO GROUND TACTICAL	172.3500	172.3500	FM
AIR TO GROUND COMMAND	168.3375	168.3375	FM
CALCORD	156.0750	156.0750	FM
AIR GUARD	168.6250	168.6250	FM

AVIATION MAP
AUGUST COMPLEX
CA-MNF-000753
8/25/2020

Legend:

- TFR
- Aviation Obstacle
- Flight Route
- Dip Site
- Drop Point
- Helispot
- Repeater
- Spot Fire
- Proposed Supply Base
- Branch Break
- Division Break
- Cal Fire Branch Break
- Cal Fire Division Break
- Uncollected Fire Edge
- Contained Line
- Completed Dozer Line
- Completed Hand Line
- Proposed Dozer Line
- Planned Fire Line
- Planned Secondary Line
- Wildfire Daily Fire Perimeter
- Cal Fire Incident
- Lake
- Management Agency
- BIA
- BLM
- COE
- ST
- USDA FS
- Administrative Forest

Datum: NAD 1983