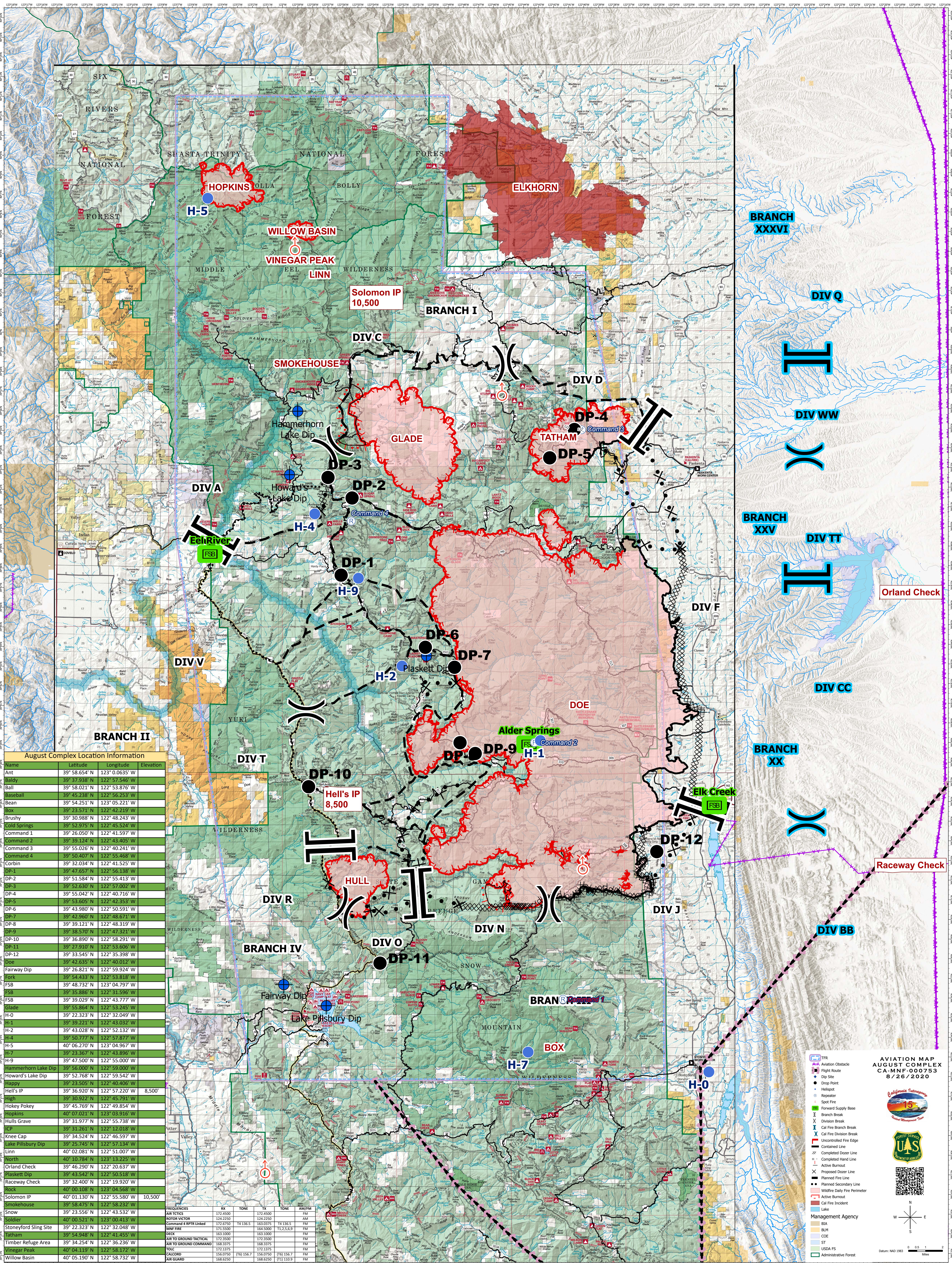


AVIATION MAP - AUGUST COMPLEX



August Complex Location Information

Name	Latitude	Longitude	Elevation
Ant	39° 58.654' N	123° 0.0635' W	
Baldy	39° 37.938' N	122° 57.546' W	
Ball	39° 58.021' N	122° 53.876' W	
Baseball	39° 45.238' N	122° 56.253' W	
Bean	39° 54.251' N	123° 05.221' W	
Box	39° 23.571' N	122° 42.219' W	
Brushy	39° 30.988' N	122° 48.243' W	
Cold Springs	39° 52.975' N	122° 45.524' W	
Command 1	39° 26.050' N	122° 41.597' W	
Command 2	39° 39.124' N	122° 43.405' W	
Command 3	39° 55.026' N	122° 40.241' W	
Command 4	39° 50.407' N	122° 55.468' W	
Corbin	39° 32.034' N	122° 41.525' W	
DP-1	39° 47.657' N	122° 56.138' W	
DP-2	39° 51.584' N	122° 55.413' W	
DP-3	39° 52.630' N	122° 57.002' W	
DP-4	39° 55.042' N	122° 40.716' W	
DP-5	39° 53.605' N	122° 42.359' W	
DP-6	39° 43.980' N	122° 50.591' W	
DP-7	39° 42.960' N	122° 48.671' W	
DP-8	39° 39.121' N	122° 48.319' W	
DP-9	39° 38.570' N	122° 47.321' W	
DP-10	39° 36.890' N	122° 58.291' W	
DP-11	39° 27.910' N	122° 53.606' W	
DP-12	39° 33.545' N	122° 35.398' W	
Doe	39° 42.635' N	122° 40.012' W	
Fairway Dip	39° 26.821' N	122° 59.924' W	
Fork	39° 54.433' N	122° 53.818' W	
FSB	39° 48.732' N	123° 04.797' W	
FSB	39° 35.886' N	122° 31.596' W	
FSB	39° 39.029' N	122° 43.777' W	
Glade	39° 55.864' N	122° 53.245' W	
H-0	39° 22.323' N	122° 32.049' W	
H-1	39° 39.221' N	122° 43.032' W	
H-2	39° 43.028' N	122° 52.132' W	
H-4	39° 50.777' N	122° 57.877' W	
H-5	40° 06.270' N	122° 04.967' W	
H-7	39° 23.367' N	122° 43.896' W	
H-9	39° 47.500' N	122° 55.000' W	
Hammerhorn Lake Dip	39° 56.000' N	122° 59.000' W	
Howard's Lake Dip	39° 52.768' N	122° 59.542' W	
Happy	39° 23.505' N	122° 40.406' W	
Hell's IP	39° 36.920' N	122° 57.220' W	8,500'
High	39° 30.922' N	122° 45.791' W	
Hokey Pokey	39° 45.769' N	122° 49.854' W	
Hopkins	40° 07.021' N	123° 03.916' W	
Hulls Grave	39° 31.977' N	122° 55.738' W	
ICP	39° 31.261' N	122° 12.018' W	
Knee Cap	39° 34.524' N	122° 46.597' W	
Lake Pillsbury Dip	39° 25.745' N	122° 57.134' W	
Linn	40° 02.081' N	122° 51.007' W	
North	40° 10.784' N	123° 13.225' W	
Orland Check	39° 46.290' N	122° 20.637' W	
Plaskett Dip	39° 43.542' N	122° 50.518' W	
Raceway Check	39° 32.400' N	122° 19.920' W	
Rock	40° 00.108' N	123° 04.568' W	
Solomon IP	40° 01.130' N	122° 55.580' W	10,500'
Smokehouse	39° 58.475' N	122° 58.232' W	
Snow	39° 23.556' N	122° 43.532' W	
Soldier	40° 00.521' N	123° 00.413' W	
Stoneyford Sling Site	39° 22.323' N	122° 32.048' W	
Tatham	39° 54.948' N	122° 41.455' W	
Timber Refuge Area	39° 34.254' N	122° 36.236' W	
Vinegar Peak	40° 04.119' N	122° 58.172' W	
Willow Basin	40° 05.190' N	122° 58.732' W	

FREQUENCIES	RX	TX	AM/FM
AIR TRACS	122.4500	122.4500	FM
AVION VICTOR	124.2500	124.2500	FM
Command 4 RPFR Linked	122.6750	163.0375 14.136.5	FM
MNF FIRE	171.5500	164.5000 14.256.9	FM
DNCR	163.1000	163.1000	FM
AIR TO GROUND TACTICAL	122.3500	122.3500	FM
AIR TO GROUND COMMAND	168.3375	168.3375	FM
FDIC	122.1375	122.1375	FM
CALCORD	156.0750 (F) 156.7	156.0750 (F) 156.7	FM
AIR GUARD	168.6250	168.6250 (F) 110.9	FM

AVIATION MAP - AUGUST COMPLEX  
CA-MNF-000753  
8/26/2020

Legend:

- TFR
- Aviation Obstacle
- Flight Route
- Dip Site
- Drop Point
- Helipost
- Repeater
- Spot Fire
- Forward Supply Base
- Branch Break
- Division Break
- Call Fire Branch Break
- Call Fire Division Break
- Uncontrolled Fire Edge
- Controlled Line
- Completed Dozer Line
- Active Burnout
- Completed Hand Line
- Proposed Dozer Line
- Planned Fire Line
- Planned Secondary Line
- Wildfire Daily Fire Perimeter
- Cal Fire Incident
- USDA FS
- Management Agency
- BIA
- BLM
- COE
- ST
- USDA FS
- Administrative Forest

Scale: 0 0.5 1 Miles  
Datum: NAD 1983