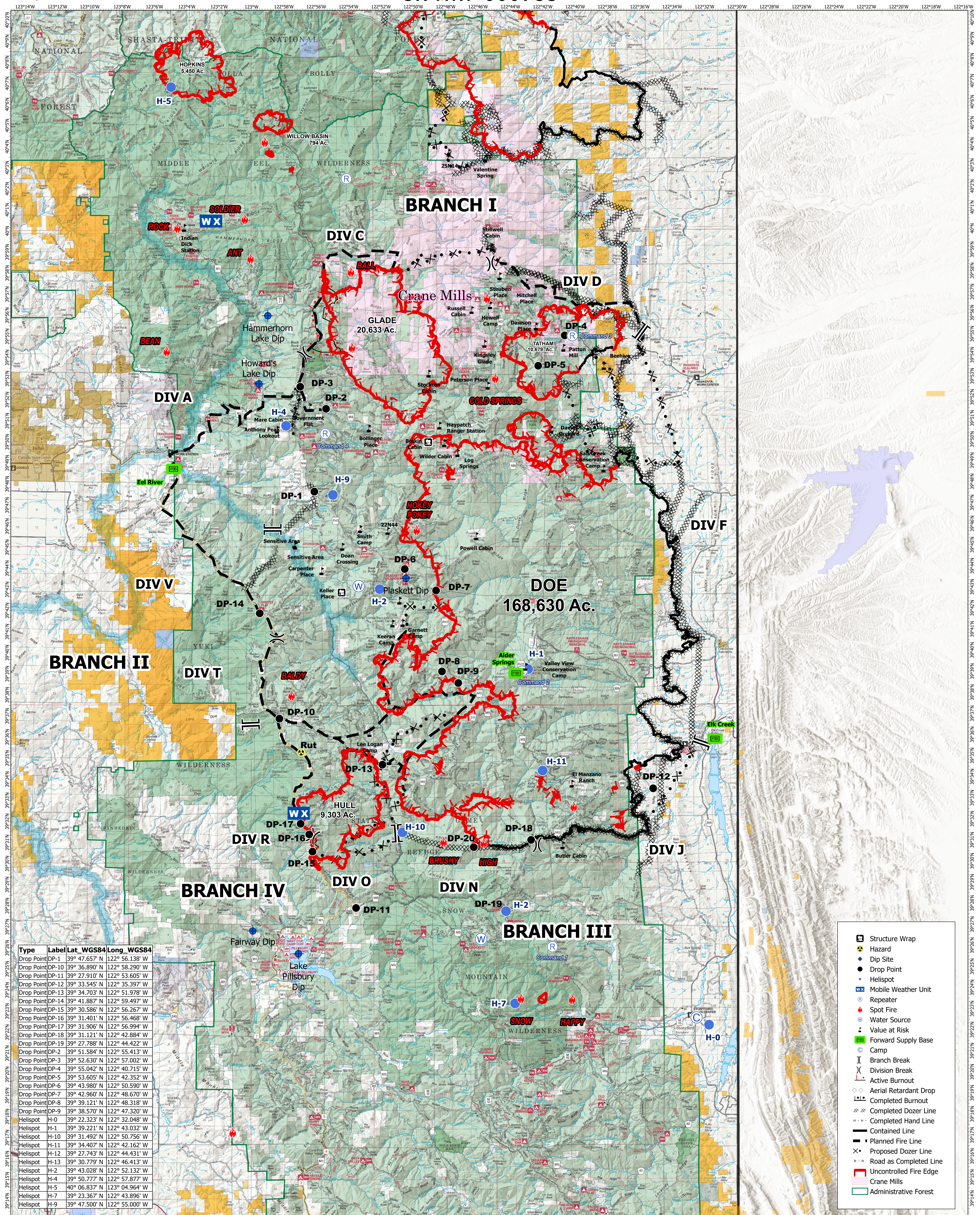


# Operations

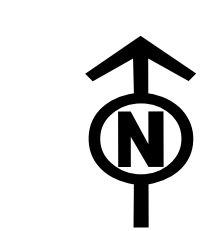
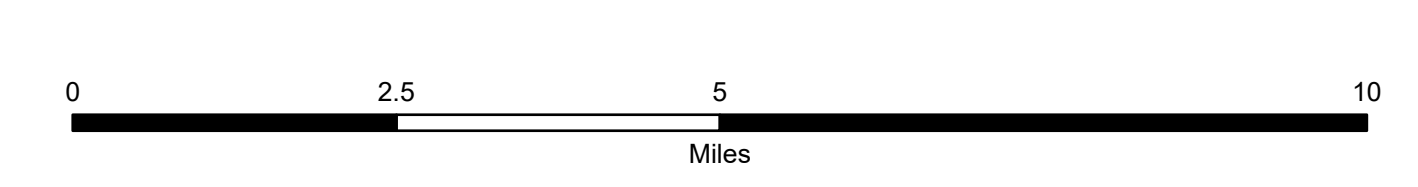
## AUGUST COMPLEX CA-MNF-00053



Type	Label	Lat_WGS84	Long_WGS84
Drop Point	DP-1	39° 47.657' N	122° 56.138' W
Drop Point	DP-10	39° 36.890' N	122° 58.290' W
Drop Point	DP-11	39° 27.910' N	122° 53.605' W
Drop Point	DP-12	39° 33.545' N	122° 35.397' W
Drop Point	DP-13	39° 34.703' N	122° 51.978' W
Drop Point	DP-14	39° 41.887' N	122° 59.497' W
Drop Point	DP-15	39° 30.586' N	122° 56.267' W
Drop Point	DP-16	39° 31.401' N	122° 56.468' W
Drop Point	DP-17	39° 31.906' N	122° 56.994' W
Drop Point	DP-18	39° 31.121' N	122° 42.884' W
Drop Point	DP-19	39° 27.788' N	122° 44.422' W
Drop Point	DP-2	39° 51.584' N	122° 55.413' W
Drop Point	DP-3	39° 52.630' N	122° 57.002' W
Drop Point	DP-4	39° 55.042' N	122° 40.715' W
Drop Point	DP-5	39° 53.605' N	122° 42.352' W
Drop Point	DP-6	39° 43.980' N	122° 50.590' W
Drop Point	DP-7	39° 42.960' N	122° 48.670' W
Drop Point	DP-8	39° 39.121' N	122° 48.318' W
Drop Point	DP-9	39° 38.570' N	122° 47.320' W
Drop Point	DP-20	39° 38.570' N	122° 47.320' W
Helispot	H-0	39° 22.323' N	122° 32.048' W
Helispot	H-1	39° 39.221' N	122° 43.032' W
Helispot	H-10	39° 31.492' N	122° 50.756' W
Helispot	H-11	39° 34.407' N	122° 42.162' W
Helispot	H-12	39° 27.743' N	122° 44.431' W
Helispot	H-13	39° 30.779' N	122° 46.413' W
Helispot	H-2	39° 43.028' N	122° 52.132' W
Helispot	H-4	39° 50.777' N	122° 57.877' W
Helispot	H-5	40° 06.837' N	123° 04.964' W
Helispot	H-7	39° 23.367' N	122° 43.896' W
Helispot	H-9	39° 47.500' N	122° 55.000' W

- Structure Wrap
- Hazard
- Dip Site
- Drop Point
- Helispot
- Mobile Weather Unit
- Repeater
- Spot Fire
- Water Source
- Value at Risk
- Forward Supply Base
- Camp
- Branch Break
- Division Break
- Active Burnout
- Aerial Retardant Drop
- Completed Burnout
- Completed Dozer Line
- Completed Hand Line
- Contained Line
- Planned Fire Line
- Proposed Dozer Line
- Road as Completed Line
- Uncontrolled Fire Edge
- Crane Mills
- Administrative Forest

8/29/2020  
215,588 ACRES  
Perimeter as of 8/28 @ 1600



NAD 1983 UTM Zone 10N