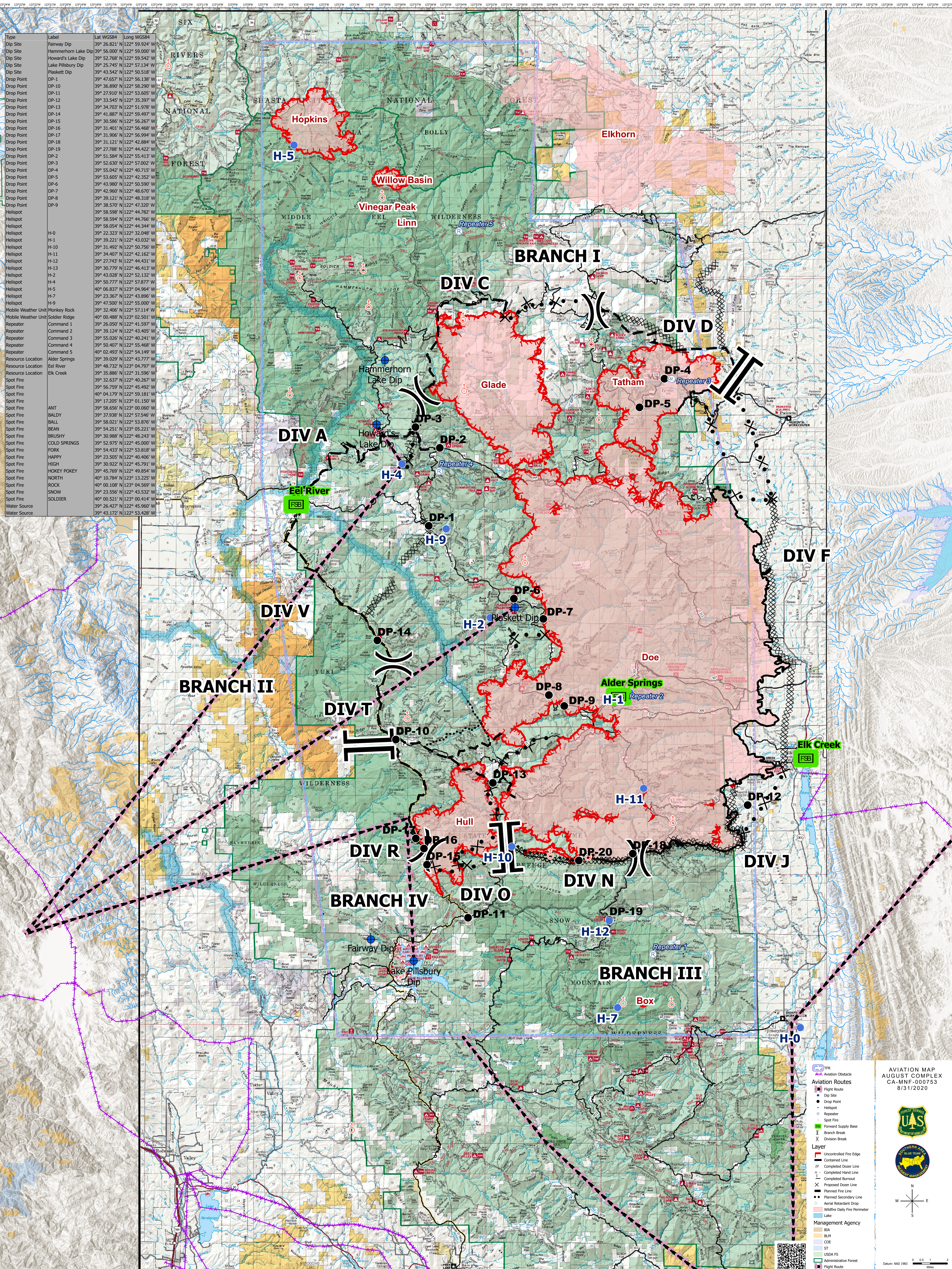


Type	Label	Lat WGS84	Long WGS84
Dip Site	Fairway Dip	39° 26.821' N	122° 59.924' W
Dip Site	Hammerhorn Lake Dip	39° 56.000' N	122° 59.000' W
Dip Site	Howard's Lake Dip	39° 52.768' N	122° 59.542' W
Dip Site	Lake Pillsbury Dip	39° 25.745' N	122° 57.134' W
Dip Site	Plaskett Dip	39° 43.542' N	122° 50.518' W
DP-1		39° 47.657' N	122° 56.138' W
DP-2		39° 36.890' N	122° 58.290' W
DP-3		39° 27.910' N	122° 53.605' W
DP-4		39° 33.545' N	122° 35.397' W
DP-5		39° 34.703' N	122° 51.978' W
DP-6		39° 41.887' N	122° 59.497' W
DP-7		39° 30.586' N	122° 56.267' W
DP-8		39° 31.401' N	122° 56.468' W
DP-9		39° 31.906' N	122° 56.994' W
DP-10		39° 31.121' N	122° 42.884' W
DP-11		39° 27.788' N	122° 44.422' W
DP-12		39° 51.584' N	122° 55.413' W
DP-13		39° 52.630' N	122° 57.002' W
DP-14		39° 55.042' N	122° 40.715' W
DP-15		39° 53.605' N	122° 42.352' W
DP-16		39° 43.980' N	122° 50.590' W
DP-17		39° 42.960' N	122° 48.670' W
DP-18		39° 39.121' N	122° 48.318' W
DP-19		39° 38.570' N	122° 47.320' W
DP-20		39° 58.598' N	122° 44.782' W
H-0		39° 58.594' N	122° 44.766' W
H-1		39° 58.054' N	122° 44.344' W
H-10		39° 22.323' N	122° 32.048' W
H-11		39° 39.221' N	122° 43.032' W
H-12		39° 31.492' N	122° 50.756' W
H-13		39° 34.407' N	122° 42.162' W
H-2		39° 27.743' N	122° 44.431' W
H-3		39° 30.779' N	122° 46.413' W
H-4		39° 43.028' N	122° 52.132' W
H-5		39° 50.777' N	122° 57.877' W
H-7		40° 06.837' N	123° 04.964' W
H-9		39° 23.367' N	122° 43.896' W
H-9		39° 47.500' N	122° 55.000' W
Mobile Weather Unit	Monkey Rock	39° 32.406' N	122° 57.114' W
Mobile Weather Unit	Soldier Ridge	40° 00.488' N	123° 02.501' W
Repeater	Command 1	39° 26.050' N	122° 41.597' W
Repeater	Command 2	39° 39.124' N	122° 43.405' W
Repeater	Command 3	39° 55.026' N	122° 40.241' W
Repeater	Command 4	39° 50.407' N	122° 55.468' W
Repeater	Command 5	40° 02.493' N	122° 54.149' W
Resource Location	Alder Springs	39° 39.029' N	122° 43.777' W
Resource Location	Eel River	39° 48.732' N	123° 04.797' W
Resource Location	Elk Creek	39° 35.886' N	122° 31.596' W
Spot Fire		39° 32.637' N	122° 40.267' W
Spot Fire		39° 56.759' N	122° 45.492' W
Spot Fire		40° 04.179' N	122° 59.181' W
Spot Fire		39° 17.205' N	123° 01.150' W
Spot Fire		39° 58.656' N	123° 00.060' W
Spot Fire		39° 37.938' N	122° 57.546' W
Spot Fire		39° 58.021' N	123° 53.876' W
Spot Fire		39° 54.251' N	123° 05.221' W
Spot Fire		39° 30.988' N	122° 48.243' W
Spot Fire		39° 52.975' N	122° 45.000' W
Spot Fire		39° 54.433' N	122° 53.818' W
Spot Fire		39° 23.505' N	122° 40.406' W
Spot Fire		39° 30.922' N	122° 45.791' W
Spot Fire		39° 45.769' N	122° 49.854' W
Spot Fire		40° 10.784' N	123° 13.225' W
Spot Fire		40° 00.108' N	123° 04.569' W
Spot Fire		39° 23.556' N	122° 43.532' W
Spot Fire		40° 00.521' N	123° 00.414' W
Water Source		39° 26.427' N	122° 45.960' W
Water Source		39° 43.172' N	122° 53.428' W



**AVIATION MAP - AUGUST COMPLEX**  
 CA-MNF-000753  
 8/31/2020

**Legend**

**Aviation Routes**

- Flight Route
- Drop Site
- Drop Point
- Helispot
- Repeater
- Spot Fire
- Forward Supply Base
- Branch Break
- Division Break

**Layer**

- Uncontrolled Fire Edge
- Controlled Line
- Completed Dozer Line
- Completed Hand Line
- Completed Burnout
- Proposed Dozer Line
- Planned Fire Line
- Planned Secondary Line
- Aerial Retardant Drop
- Wildfire Daily Fire Perimeter
- Lake

**Management Agency**

- BLM
- BLM
- COE
- ST
- USDA FS
- Administrative Forest
- Flight Route

**Logos:** UAS (United Agency Services), Southern Area Blue Team, Incident Management

**Scale:** 0 0.5 1 2 Miles  
 Datum: NAD 1983