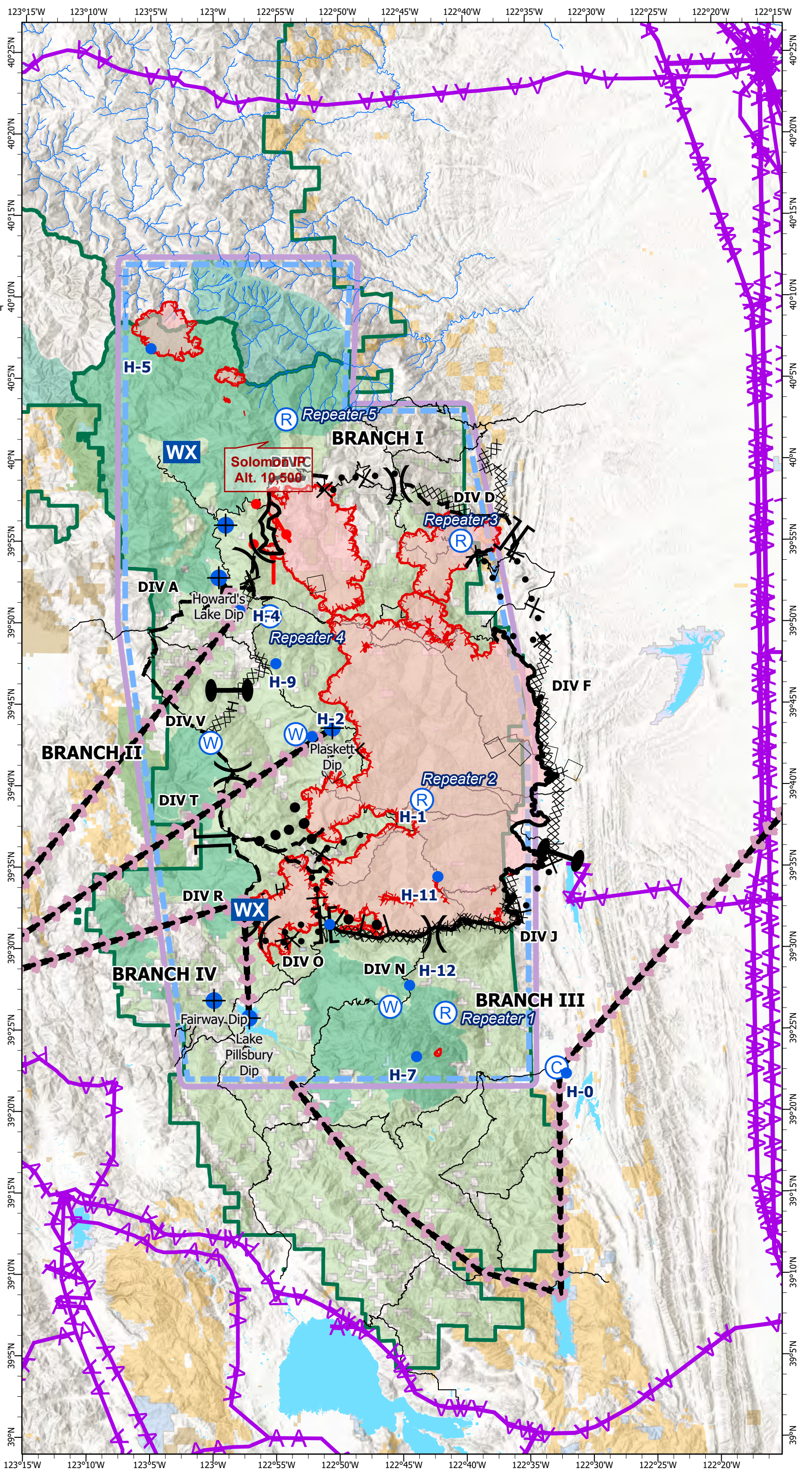
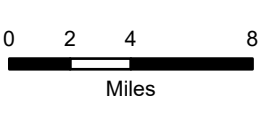
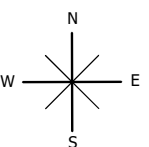


PILOT MAP  
 AUGUST COMPLEX  
 CA-MNF-000753  
 8/31/2020

-  TFR
-  Aviation Obstacle
-  Flight Route
-  Uncontrolled Fire Edge
-  Contained Line
-  Completed Dozer Line
-  Completed Hand Line
-  Active Burnout
-  Completed Burnout
-  Proposed Dozer Line
-  Planned Fire Line
-  Planned Secondary Line
-  Aerial Retardant Drop
-  Wildfire Daily Fire Perimeter
-  Lake
- Management Agency**
-  BIA
-  BLM
-  COE
-  ST
-  USDA FS
-  Administrative Forest
-  Wilderness
-  Branch Break
-  Camp
-  Dip Site
-  Division Break
-  Helispot
-  Mobile Weather Unit
-  Repeater
-  Water Source
-  Zone Break
-  Flight Route
-  World Hillshade



Datum: NAD 1983



Type	Label	Lat WGS84	Long WGS84
Dip Site	Fairway Dip	39° 26.821' N	122° 59.924' W
Dip Site	Hammerhorn Lake Dip	39° 56.000' N	122° 59.000' W
Dip Site	Howard's Lake Dip	39° 52.768' N	122° 59.542' W
Dip Site	Lake Pillsbury Dip	39° 25.745' N	122° 57.134' W
Dip Site	Plaskett Dip	39° 43.542' N	122° 50.518' W
Drop Point	DP-1	39° 47.657' N	122° 56.138' W
Drop Point	DP-10	39° 36.890' N	122° 58.290' W
Drop Point	DP-11	39° 27.910' N	122° 53.605' W
Drop Point	DP-12	39° 33.545' N	122° 35.397' W
Drop Point	DP-13	39° 34.703' N	122° 51.978' W
Drop Point	DP-14	39° 41.887' N	122° 59.497' W
Drop Point	DP-15	39° 30.586' N	122° 56.267' W
Drop Point	DP-16	39° 31.401' N	122° 56.468' W
Drop Point	DP-17	39° 31.906' N	122° 56.994' W
Drop Point	DP-18	39° 31.121' N	122° 42.884' W
Drop Point	DP-19	39° 27.788' N	122° 44.422' W
Drop Point	DP-2	39° 51.584' N	122° 55.413' W
Drop Point	DP-3	39° 52.630' N	122° 57.002' W
Drop Point	DP-4	39° 55.042' N	122° 40.715' W
Drop Point	DP-5	39° 53.605' N	122° 42.352' W
Drop Point	DP-6	39° 43.980' N	122° 50.590' W
Drop Point	DP-7	39° 42.960' N	122° 48.670' W
Drop Point	DP-8	39° 39.121' N	122° 48.318' W
Drop Point	DP-9	39° 38.570' N	122° 47.320' W
Helispot		39° 58.598' N	122° 44.782' W
Helispot		39° 58.594' N	122° 44.766' W
Helispot		39° 58.054' N	122° 44.344' W
Helispot	H-0	39° 22.323' N	122° 32.048' W
Helispot	H-1	39° 39.221' N	122° 43.032' W
Helispot	H-10	39° 31.492' N	122° 50.756' W
Helispot	H-11	39° 34.407' N	122° 42.162' W
Helispot	H-12	39° 27.743' N	122° 44.431' W
Helispot	H-13	39° 30.779' N	122° 46.413' W
Helispot	H-2	39° 43.028' N	122° 52.132' W
Helispot	H-4	39° 50.777' N	122° 57.877' W
Helispot	H-5	40° 06.837' N	123° 04.964' W
Helispot	H-7	39° 23.367' N	122° 43.896' W
Helispot	H-9	39° 47.500' N	122° 55.000' W
Mobile Weather Unit	Monkey Rock	39° 32.406' N	122° 57.114' W
Mobile Weather Unit	Soldier Ridge	40° 00.488' N	123° 02.501' W
Repeater	Command 1	39° 26.050' N	122° 41.597' W
Repeater	Command 2	39° 39.124' N	122° 43.405' W
Repeater	Command 3	39° 55.026' N	122° 40.241' W
Repeater	Command 4	39° 50.407' N	122° 55.468' W
Repeater	Command 5	40° 02.493' N	122° 54.149' W
Resource Location	Alder Springs	39° 39.029' N	122° 43.777' W
Resource Location	Eel River	39° 48.732' N	123° 04.797' W
Resource Location	Elk Creek	39° 35.886' N	122° 31.596' W
Spot Fire		39° 32.637' N	122° 40.267' W
Spot Fire		39° 56.759' N	122° 45.492' W
Spot Fire		40° 04.179' N	122° 59.181' W
Spot Fire		39° 17.205' N	123° 01.150' W
Spot Fire	ANT	39° 58.656' N	123° 00.060' W
Spot Fire	BALDY	39° 37.938' N	122° 57.546' W
Spot Fire	BALL	39° 58.021' N	122° 53.876' W
Spot Fire	BEAN	39° 54.251' N	123° 05.221' W
Spot Fire	BRUSHY	39° 30.988' N	122° 48.243' W
Spot Fire	COLD SPRINGS	39° 52.975' N	122° 45.000' W
Spot Fire	FORK	39° 54.433' N	122° 53.818' W
Spot Fire	HAPPY	39° 23.505' N	122° 40.406' W
Spot Fire	HIGH	39° 30.922' N	122° 45.791' W
Spot Fire	HOKEY POKEY	39° 45.769' N	122° 49.854' W
Spot Fire	NORTH	40° 10.784' N	123° 13.225' W
Spot Fire	ROCK	40° 00.108' N	123° 04.569' W
Spot Fire	SNOW	39° 23.556' N	122° 43.532' W
Spot Fire	SOLDIER	40° 00.521' N	123° 00.414' W
Water Source		39° 26.427' N	122° 45.960' W
Water Source		39° 43.172' N	122° 53.428' W

