

# Air Ops Briefing

August Complex  
CA-MNF-000753  
09/09/2020

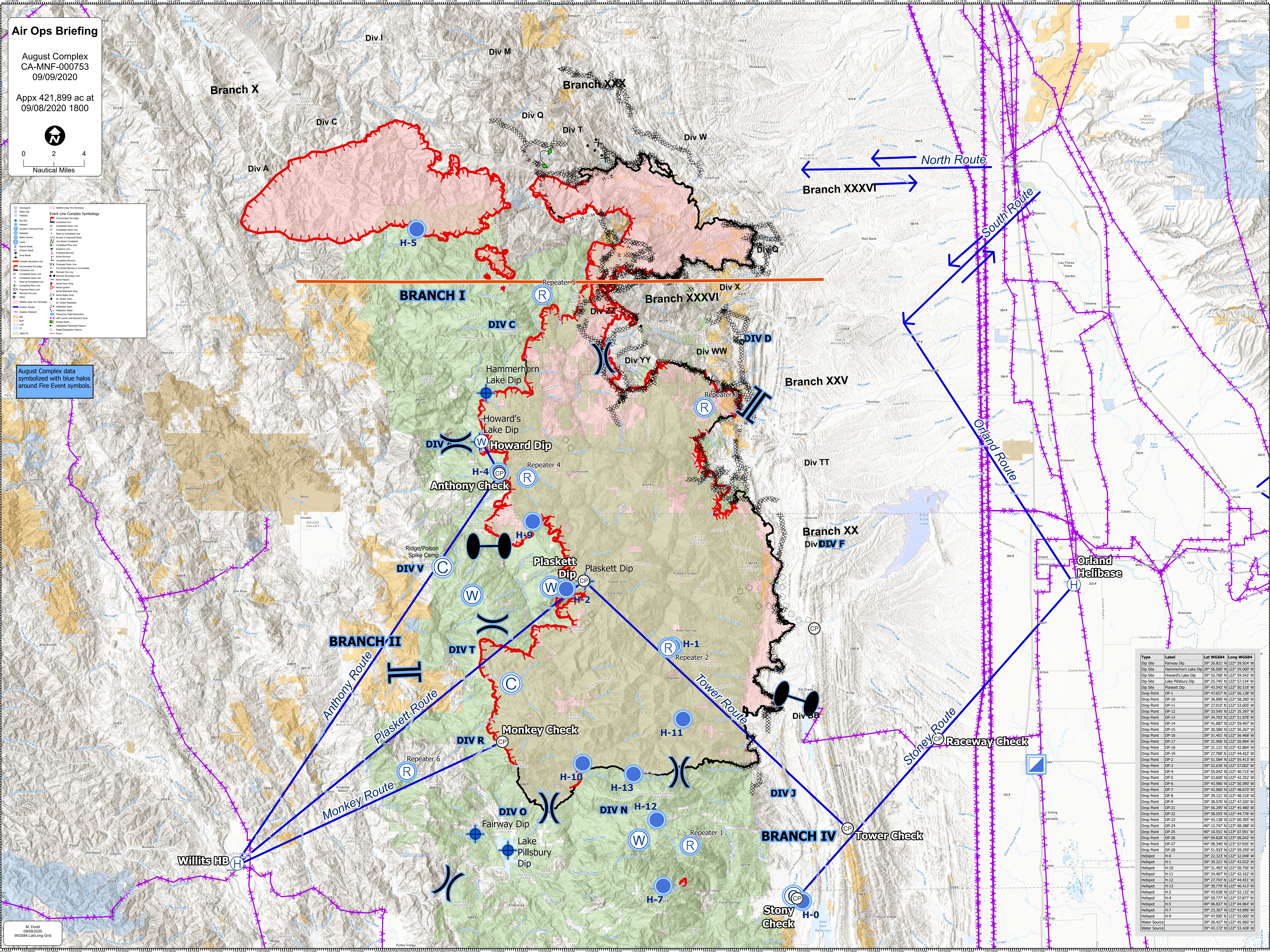
Appx 421,899 ac at  
09/08/2020 1800



0 2 4  
Nautical Miles

Symbol	Description
	Event Line Complex Symbology
	Hammerhorn Lake Dip
	Howard's Lake Dip
	Anthony Check
	Plaskett Dip
	Repeater 2
	Monkey Check
	Monkey Route
	Fairway Dip
	Lake Pillsbury Dip
	Stony Check
	Stony Check
	Repeater 1
	Plaskett Dip
	Anthony Check
	Howard's Lake Dip
	Hammerhorn Lake Dip
	Stony Check
	Monkey Route
	Monkey Check
	Lake Pillsbury Dip
	Fairway Dip
	Plaskett Dip
	Repeater 2
	Monkey Check
	Monkey Route
	Lake Pillsbury Dip
	Fairway Dip
	Stony Check
	Repeater 1
	Plaskett Dip
	Anthony Check
	Howard's Lake Dip
	Hammerhorn Lake Dip

August Complex data symbolized with blue halos around Fire Event symbols.



Type	Label	Lat WGS84	Long WGS84
Dip Site	Fairway Dip	39° 28.821' N	122° 59.924' W
Dip Site	Hammerhorn Lake Dip	39° 56.000' N	122° 59.000' W
Dip Site	Howard's Lake Dip	39° 52.768' N	122° 59.542' W
Dip Site	Lake Pillsbury Dip	39° 25.745' N	122° 57.134' W
Dip Site	Plaskett Dip	39° 43.942' N	122° 56.518' W
Drop Point	DP-1	39° 47.657' N	122° 56.138' W
Drop Point	DP-10	39° 36.890' N	122° 58.290' W
Drop Point	DP-11	39° 27.910' N	122° 53.605' W
Drop Point	DP-12	39° 33.545' N	122° 35.397' W
Drop Point	DP-13	39° 34.703' N	122° 51.978' W
Drop Point	DP-14	39° 41.867' N	122° 59.497' W
Drop Point	DP-15	39° 38.586' N	122° 56.357' W
Drop Point	DP-16	39° 31.401' N	122° 56.468' W
Drop Point	DP-17	39° 31.906' N	122° 56.994' W
Drop Point	DP-18	39° 31.121' N	122° 42.884' W
Drop Point	DP-19	39° 27.788' N	122° 44.422' W
Drop Point	DP-2	39° 51.594' N	122° 55.413' W
Drop Point	DP-3	39° 52.630' N	122° 57.082' W
Drop Point	DP-4	39° 55.042' N	122° 40.715' W
Drop Point	DP-5	39° 53.605' N	122° 42.352' W
Drop Point	DP-6	39° 43.980' N	122° 50.590' W
Drop Point	DP-7	39° 42.960' N	122° 46.670' W
Drop Point	DP-8	39° 38.121' N	122° 46.310' W
Drop Point	DP-9	39° 38.570' N	122° 47.320' W
Drop Point	DP-21	39° 56.295' N	122° 45.480' W
Drop Point	DP-22	39° 58.593' N	122° 44.778' W
Drop Point	DP-23	39° 43.138' N	123° 00.395' W
Drop Point	DP-24	40° 12.747' N	123° 08.388' W
Drop Point	DP-25	40° 15.511' N	123° 09.591' W
Drop Point	DP-26	40° 09.828' N	123° 08.042' W
Drop Point	DP-27	40° 08.340' N	123° 07.928' W
Drop Point	DP-28	39° 51.933' N	123° 07.928' W
Drop Point	H-0	39° 22.323' N	122° 32.048' W
Drop Point	H-1	39° 39.221' N	122° 43.032' W
Drop Point	H-10	39° 31.482' N	122° 50.750' W
Drop Point	H-11	39° 34.407' N	122° 42.162' W
Drop Point	H-12	39° 27.743' N	122° 44.431' W
Drop Point	H-13	39° 30.779' N	122° 46.413' W
Drop Point	H-2	39° 43.028' N	122° 52.132' W
Drop Point	H-4	39° 50.777' N	122° 57.877' W
Drop Point	H-5	40° 05.837' N	123° 04.964' W
Drop Point	H-7	39° 23.367' N	122° 43.896' W
Drop Point	H-9	39° 47.500' N	122° 45.960' W
Water Source		39° 26.427' N	122° 45.960' W
Water Source		39° 43.172' N	122° 53.428' W