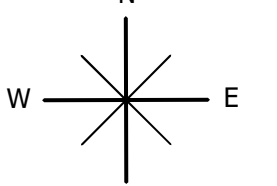
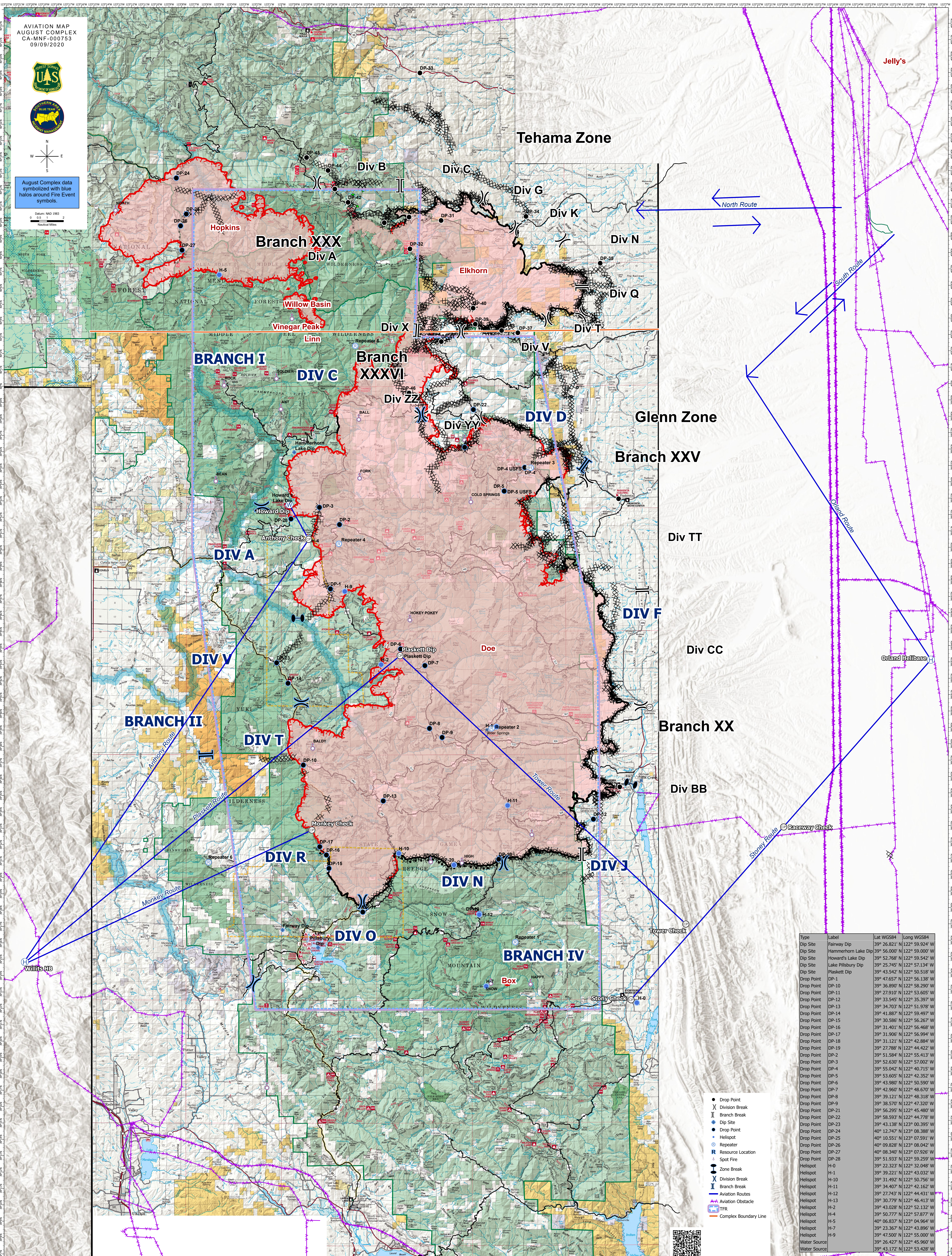


AVIATION MAP
AUGUST COMPLEX
CA-MNF-000753
09/09/2020



August Complex data symbolized with blue halos around Fire Event symbols.



| Type | Label | Lat WGS84 | Long WGS84 |
|--------------|---------------------|---------------|----------------|
| Dip Site | Fairway Dip | 39° 26.821' N | 122° 59.924' W |
| Dip Site | Hammerhorn Lake Dip | 39° 56.000' N | 122° 59.000' W |
| Dip Site | Howard's Lake Dip | 39° 52.768' N | 122° 59.542' W |
| Dip Site | Lake Pillsbury Dip | 39° 25.745' N | 122° 57.134' W |
| Dip Site | Plaskett Dip | 39° 43.542' N | 122° 50.518' W |
| Drop Point | DP-1 | 39° 47.657' N | 122° 56.138' W |
| Drop Point | DP-10 | 39° 36.890' N | 122° 58.290' W |
| Drop Point | DP-11 | 39° 27.910' N | 122° 53.605' W |
| Drop Point | DP-12 | 39° 33.545' N | 122° 35.397' W |
| Drop Point | DP-13 | 39° 34.703' N | 122° 51.978' W |
| Drop Point | DP-14 | 39° 41.887' N | 122° 59.497' W |
| Drop Point | DP-15 | 39° 30.586' N | 122° 56.267' W |
| Drop Point | DP-16 | 39° 31.401' N | 122° 56.468' W |
| Drop Point | DP-17 | 39° 31.906' N | 122° 56.994' W |
| Drop Point | DP-18 | 39° 31.121' N | 122° 42.884' W |
| Drop Point | DP-19 | 39° 27.788' N | 122° 44.422' W |
| Drop Point | DP-2 | 39° 51.584' N | 122° 55.413' W |
| Drop Point | DP-3 | 39° 52.630' N | 122° 57.002' W |
| Drop Point | DP-4 | 39° 55.042' N | 122° 40.715' W |
| Drop Point | DP-5 | 39° 53.605' N | 122° 42.352' W |
| Drop Point | DP-6 | 39° 43.980' N | 122° 50.590' W |
| Drop Point | DP-7 | 39° 42.960' N | 122° 48.670' W |
| Drop Point | DP-8 | 39° 39.121' N | 122° 48.318' W |
| Drop Point | DP-9 | 39° 38.570' N | 122° 47.320' W |
| Drop Point | DP-21 | 39° 56.295' N | 122° 45.480' W |
| Drop Point | DP-22 | 39° 58.593' N | 122° 44.778' W |
| Drop Point | DP-23 | 39° 43.138' N | 123° 00.395' W |
| Drop Point | DP-24 | 40° 12.747' N | 123° 08.388' W |
| Drop Point | DP-25 | 40° 10.551' N | 123° 07.591' W |
| Drop Point | DP-26 | 40° 09.828' N | 123° 08.042' W |
| Drop Point | DP-27 | 40° 08.340' N | 123° 07.926' W |
| Drop Point | DP-28 | 39° 51.933' N | 122° 59.259' W |
| Helispot | H-0 | 39° 22.323' N | 122° 32.048' W |
| Helispot | H-1 | 39° 39.221' N | 122° 43.032' W |
| Helispot | H-10 | 39° 31.492' N | 122° 50.756' W |
| Helispot | H-11 | 39° 34.407' N | 122° 42.162' W |
| Helispot | H-12 | 39° 27.743' N | 122° 44.431' W |
| Helispot | H-13 | 39° 30.779' N | 122° 46.413' W |
| Helispot | H-2 | 39° 43.028' N | 122° 52.132' W |
| Helispot | H-4 | 39° 50.777' N | 122° 57.877' W |
| Helispot | H-5 | 40° 06.837' N | 123° 04.964' W |
| Helispot | H-7 | 39° 23.367' N | 122° 43.896' W |
| Helispot | H-9 | 39° 47.500' N | 122° 55.000' W |
| Water Source | | 39° 26.427' N | 122° 45.960' W |
| Water Source | | 39° 43.172' N | 122° 53.428' W |

- Drop Point
- ⌘ Division Break
- ⌘ Branch Break
- Dip Site
- Helispot
- Repeater
- Resource Location
- Spot Fire
- ⌘ Zone Break
- ⌘ Division Break
- ⌘ Branch Break
- ⌘ Aviation Route
- ⌘ Obstacle
- ⌘ TFR
- ⌘ Complex Boundary Line

