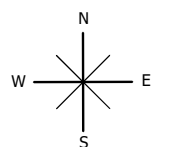
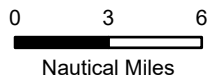
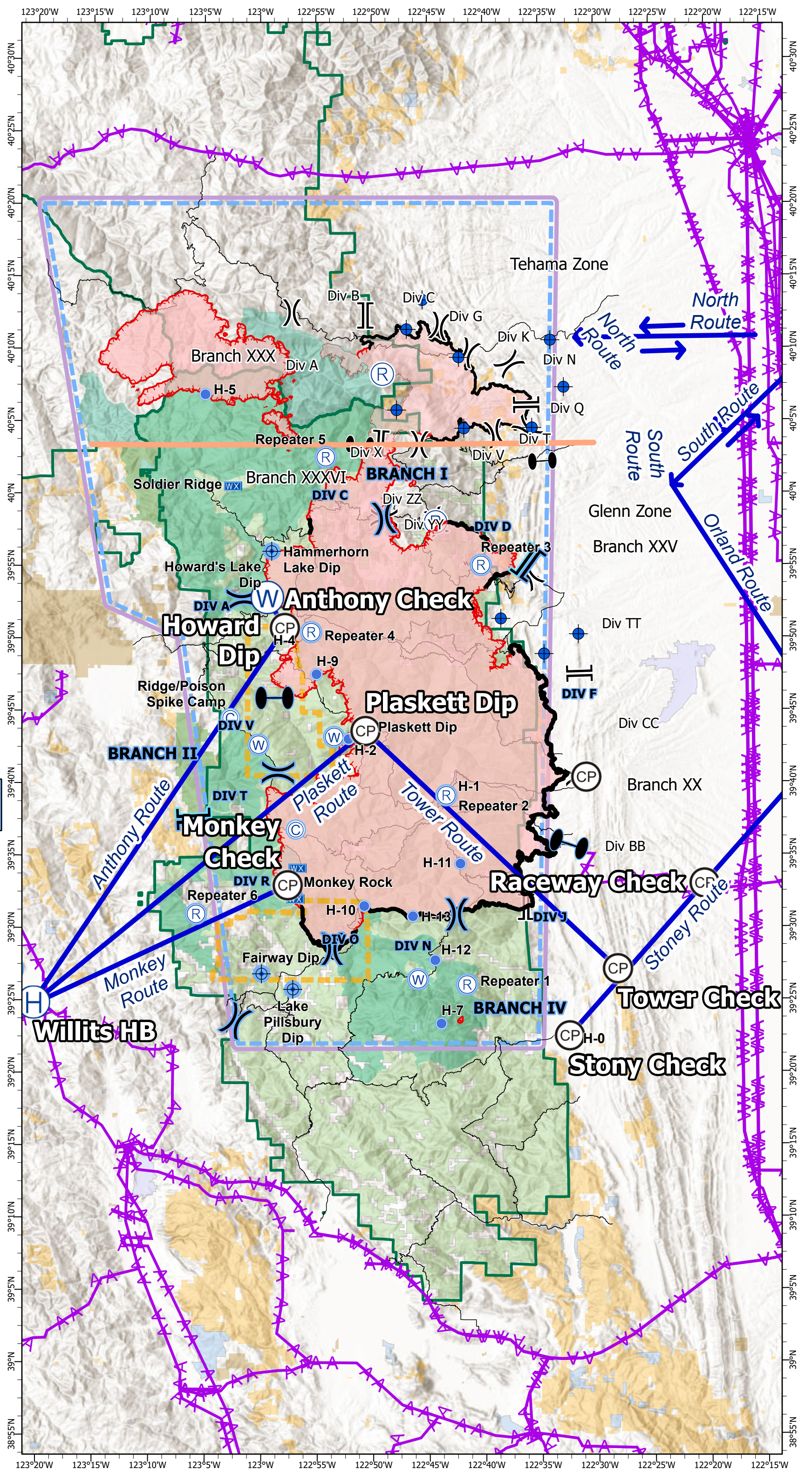


-  TFR
-  Complex Boundary Line
-  Aviation Obstacle
- Management Agency
-  BIA
-  BLM
-  COE
-  ST
-  USDA FS
-  National Forest boundary
-  Wilderness
- Aviation Checkpoints
- SymbolID
-  Checkpoint
-  Water Dip
-  Helibase
-  Camp
-  Dip Site
-  Helibase
-  Helispot
-  Incident Command Post
-  Mobile Weather Unit
-  Repeater
-  Water Source
-  Zone Break
-  Division Break
-  Branch Break

August Complex data symbolized with blue halos around Fire Event symbols.



Datum: NAD 1983



Type	Label	Lat WGS84	Long WGS84
Dip Site	Fairway Dip	39° 26.821' N	122° 59.924' W
Dip Site	Hammerhorn Lake Dip	39° 56.000' N	122° 59.000' W
Dip Site	Howard's Lake Dip	39° 52.768' N	122° 59.542' W
Dip Site	Lake Pillsbury Dip	39° 25.745' N	122° 57.134' W
Dip Site	Plaskett Dip	39° 43.542' N	122° 50.518' W
Drop Point	DP-1	39° 47.657' N	122° 56.138' W
Drop Point	DP-10	39° 36.890' N	122° 58.290' W
Drop Point	DP-11	39° 27.910' N	122° 53.605' W
Drop Point	DP-12	39° 33.545' N	122° 35.397' W
Drop Point	DP-13	39° 34.703' N	122° 51.978' W
Drop Point	DP-14	39° 41.887' N	122° 59.497' W
Drop Point	DP-15	39° 30.586' N	122° 56.267' W
Drop Point	DP-16	39° 31.401' N	122° 56.468' W
Drop Point	DP-17	39° 31.906' N	122° 56.994' W
Drop Point	DP-18	39° 31.121' N	122° 42.884' W
Drop Point	DP-19	39° 27.788' N	122° 44.422' W
Drop Point	DP-2	39° 51.584' N	122° 55.413' W
Drop Point	DP-3	39° 52.630' N	122° 57.002' W
Drop Point	DP-4	39° 55.042' N	122° 40.715' W
Drop Point	DP-5	39° 53.605' N	122° 42.352' W
Drop Point	DP-6	39° 43.980' N	122° 50.590' W
Drop Point	DP-7	39° 42.960' N	122° 48.670' W
Drop Point	DP-8	39° 39.121' N	122° 48.318' W

Type	Label	Lat WGS84	Long WGS84
Drop Point	DP-9	39° 38.570' N	122° 47.320' W
Drop Point	DP-21	39° 56.295' N	122° 45.480' W
Drop Point	DP-22	39° 58.593' N	122° 44.778' W
Drop Point	DP-23	39° 43.138' N	123° 00.395' W
Drop Point	DP-24	40° 12.747' N	123° 08.388' W
Drop Point	DP-25	40° 10.551' N	123° 07.591' W
Drop Point	DP-26	40° 09.828' N	123° 08.042' W
Drop Point	DP-27	40° 08.340' N	123° 07.926' W
Drop Point	DP-28	39° 51.933' N	122° 59.259' W
Helispot	H-0	39° 22.323' N	122° 32.048' W
Helispot	H-1	39° 39.221' N	122° 43.032' W
Helispot	H-10	39° 31.492' N	122° 50.756' W
Helispot	H-11	39° 34.407' N	122° 42.162' W
Helispot	H-12	39° 27.743' N	122° 44.431' W
Helispot	H-13	39° 30.779' N	122° 46.413' W
Helispot	H-2	39° 43.028' N	122° 52.132' W
Helispot	H-4	39° 50.777' N	122° 57.877' W
Helispot	H-5	40° 06.837' N	123° 04.964' W
Helispot	H-7	39° 23.367' N	122° 43.896' W
Helispot	H-9	39° 47.500' N	122° 55.000' W
Water Source		39° 26.427' N	122° 45.960' W
Water Source		39° 43.172' N	122° 53.428' W