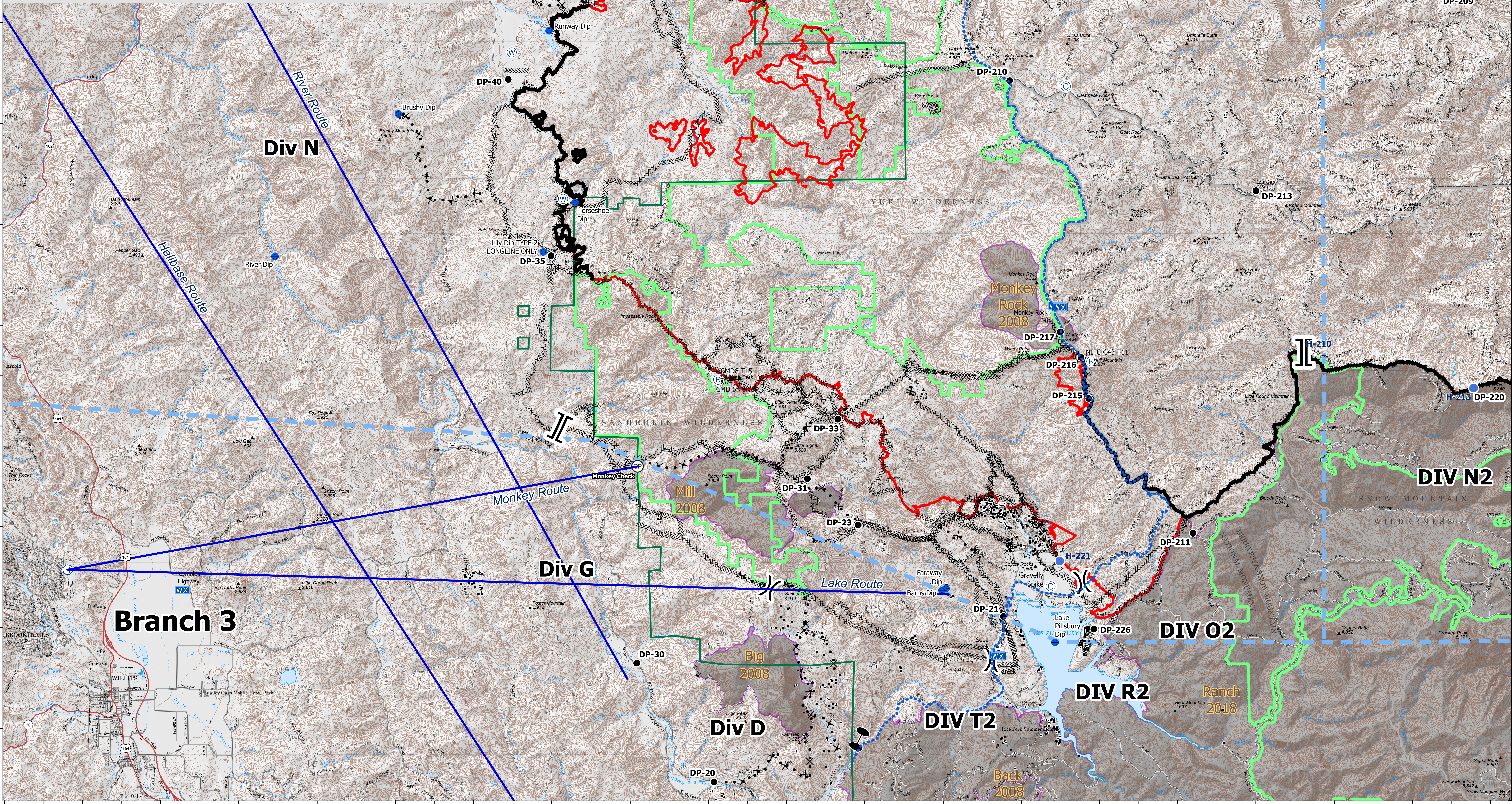
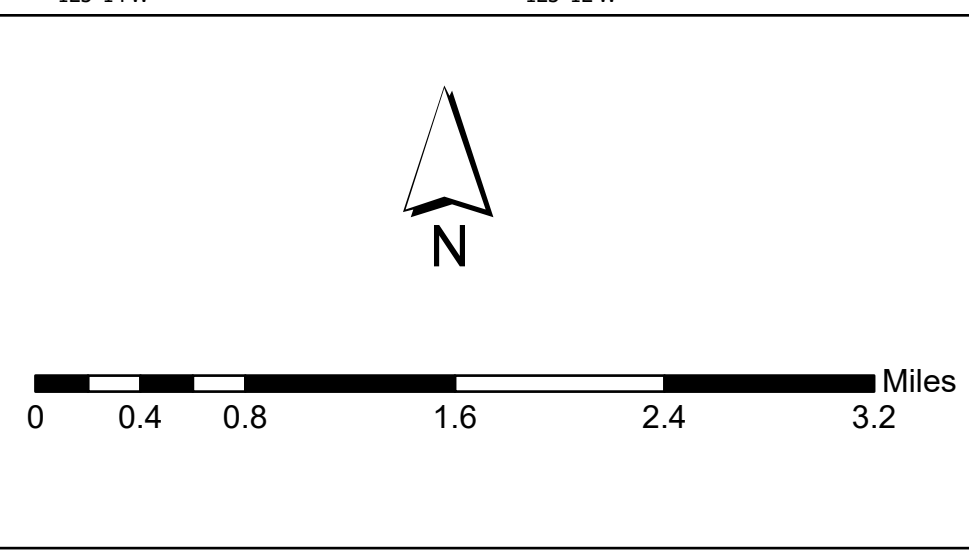


FeatureCategory	Label	LatWGS84_DDM	LongWGS84_DDM	FeatureCategory	Label	LatWGS84_DDM	LongWGS84_DDM
Dip Site	Plaskett Dip	122° 50.51881138' W	39° 43.54230387' N	Drop Point	DP-228	122° 59.25994499' W	39° 51.03287239' N
Dip Site	Faraway Dip	122° 59.92481054' W	39° 26.82130186' N	Drop Point	DP-244	122° 38.88252524' W	39° 49.16890586' N
Dip Site	Lake Pillsbury Dip	122° 57.13480999' W	39° 25.74530202' N	Drop Point	DP-235	122° 05.57281406' W	39° 46.94720292' N
Dip Site	Howard's Lake Dip	122° 59.54281402' W	39° 52.76830386' N	Drop Point	DP-240	122° 38.68281041' W	39° 49.24030530' N
Dip Site	Hammerhorn Lake Dip	122° 59.00081481' W	39° 56.00030411' N	Drop Point	DP-226	122° 56.14280990' W	39° 26.01020215' N
Drop Point	DP-201	122° 56.13881281' W	39° 47.65730377' N	Drop Point	DP-38	122° 58.50680745' W	39° 04.64230034' N
Drop Point	DP-202	122° 55.41335956' W	39° 51.58418712' N	Drop Point	DP-237	40° 3.2737' N	122° 41.230' W
Drop Point	DP-203	122° 57.00281363' W	39° 52.63030405' N	Drop Point	DP-241	39° 2.748' N	122° 47.314' W
Drop Point	DP-212	122° 35.39780782' W	39° 33.54530438' N	Drop Point	DP-246	39° 59.611' N	122° 49.886' W
Drop Point	DP-208	122° 48.31891557' W	39° 39.12137006' N	Helispot	H-207	122° 43.89680775' W	39° 23.36730291' N
Drop Point	DP-204	122° 40.71581151' W	39° 55.04230554' N	Helispot	H-200	122° 32.04880578' W	39° 22.32330376' N
Drop Point	DP-205	122° 42.35281151' W	39° 53.60530529' N	Helispot	H-201	122° 43.03264546' W	39° 39.22145803' N
Drop Point	DP-206	122° 50.59081148' W	39° 43.98030393' N	Helispot	H-209	122° 55.00081257' W	39° 47.50030383' N
Drop Point	DP-210	122° 48.67081106' W	39° 42.96030401' N	Helispot	H-202	122° 52.13281153' W	39° 43.02830374' N
Drop Point	DP-207	122° 58.29081166' W	39° 36.89030283' N	Helispot	H-204	122° 52.87781349' W	39° 50.77730382' N
Drop Point	DP-209	122° 47.32081024' W	39° 38.57030280' N	Helispot	H-213	122° 46.41307554' W	39° 31.49292908' N
Drop Point	DP-211	122° 53.60580979' W	39° 27.91030248' N	Helispot	H-210	122° 50.75635840' W	39° 31.49292908' N
Drop Point	DP-213	122° 51.97881043' W	39° 34.70330314' N	Helispot	H-211	122° 42.16298351' W	39° 34.40725556' N
Drop Point	DP-220	122° 46.39648276' W	39° 30.78481448' N	Helispot	H-212	122° 44.43114879' W	39° 27.74357730' N
Drop Point	DP-215	122° 56.26787311' W	39° 30.58630147' N	Helispot	H-219	122° 37.69081021' W	39° 48.63330533' N
Drop Point	DP-216	122° 56.46895504' W	39° 31.40121888' N	Helispot	H-221	122° 57.01081017' W	39° 27.36130214' N
Drop Point	DP-214	122° 56.99465478' W	39° 31.90623825' N	Helispot	H-218	122° 45.66781295' W	39° 59.91830553' N
Drop Point	DP-221	122° 45.48948977' W	39° 56.29548617' N	Helispot	H-218	122° 40.71581151' W	39° 55.04230554' N
Drop Point	DP-222	122° 44.7765091' W	39° 58.59293702' N	Helispot	H-215	122° 46.32081310' W	40° 00.57110550' N
Drop Point	DP-218	122° 42.88468871' W	39° 31.12126483' N	Helispot	H-217	122° 45.41281258' W	39° 57.63070536' N
Drop Point	DP-219	122° 44.42262541' W	39° 27.7887502' N	Helibase	Willits	123° 22.40019297' W	39° 27.15365610' N



Air Ops South
 August Complex South Zone
 CA-MNF-000753
 09/23/2020
 487,221 acres as of 9/22/2020 2140



- Drop Point
- Helibase
- Helispot
- Mobile Weather Unit
- Repeater
- Water Source
- Value at Risk
- Zone Break
- Division Break
- Branch Break
- Completed Dozer Line
- Completed Hand Line
- Contained Line
- Proposed Dozer Line
- Temporary Flight Restriction
- Structures
- Aviation Routes
- Aviation Checkpoint
- Uncontrolled Fire Edge
- Administrative Forest
- FS Wilderness
- Special Management Designations
- Fire History (2008-2018) > 300 ac

B. Purcell
 9/23/2020 1055
 Acres from IP
 North American 1983 Datum, Lat/Long
 Grid