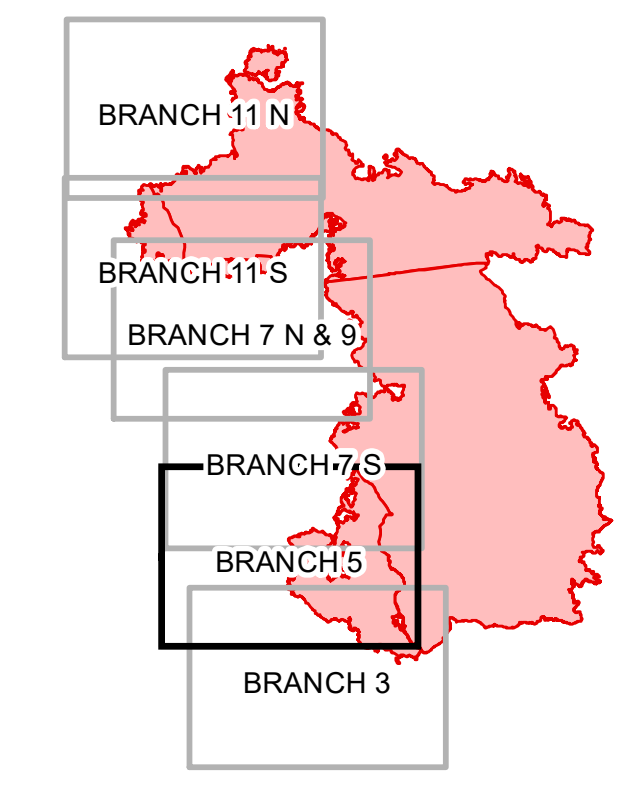


PAGE REFERENCE

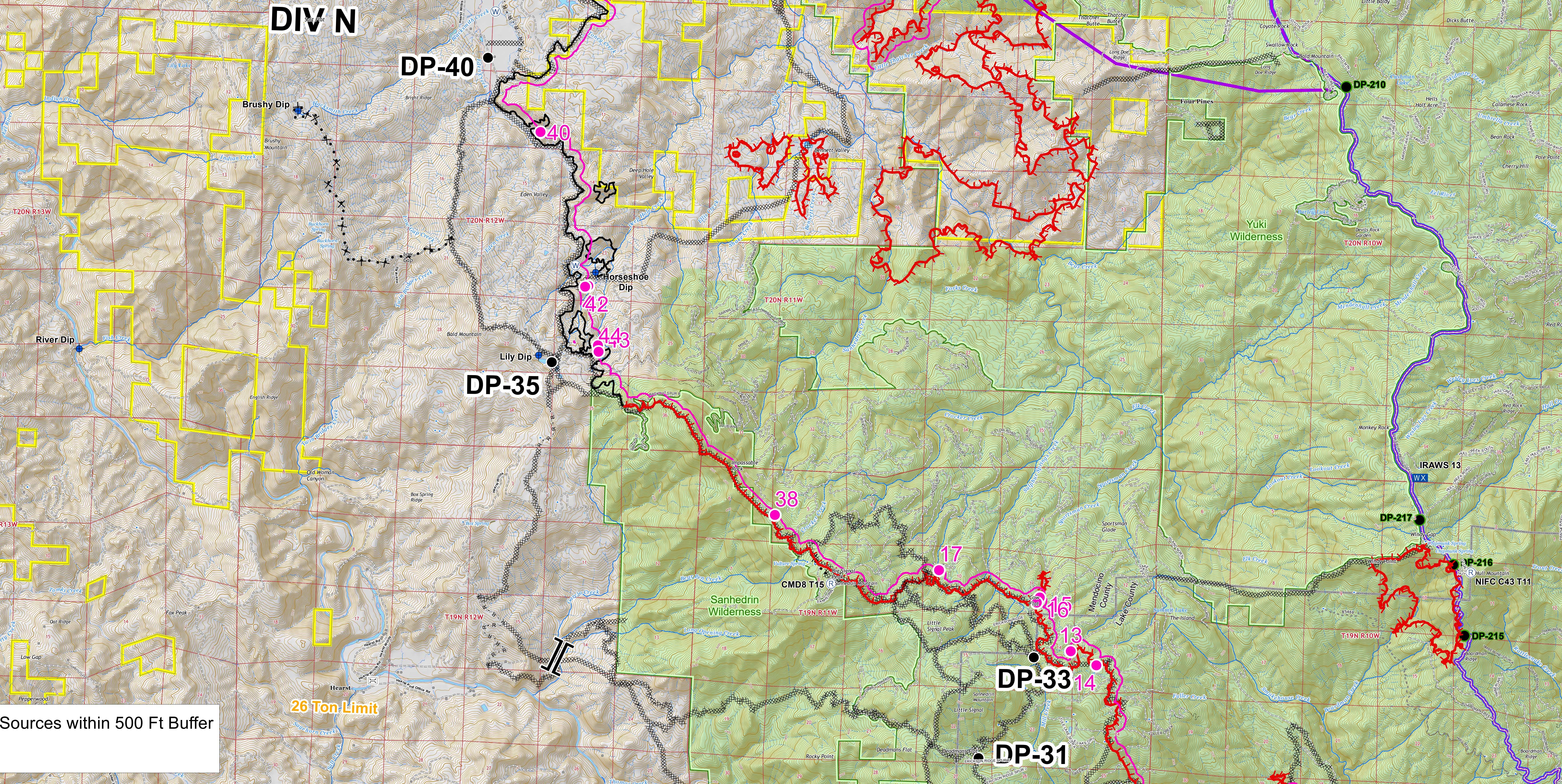


COVELO OPERATIONAL SECTOR
MENDOCINO OPERATIONAL SECTOR

BRANCH 5

DIV N

Id	Lat NAD 83 Teale Albers DDM	Long NAD 83 Teale Albers DDM
0	39° 28.098' N	122° 56.974' W
1	39° 28.091' N	122° 57.122' W
2	39° 28.341' N	122° 57.586' W
3	39° 50.719' N	122° 58.292' W
4	39° 53.192' N	123° 0.862' W
5	39° 57.244' N	123° 3.331' W
6	39° 54.291' N	123° 2.819' W
7	39° 51.008' N	123° 2.541' W
8	39° 50.406' N	123° 2.789' W
9	39° 50.391' N	123° 2.755' W
10	39° 42.996' N	123° 3.020' W
11	39° 42.791' N	123° 2.513' W
12	39° 42.849' N	123° 2.729' W
13	39° 30.261' N	123° 2.144' W
14	39° 30.109' N	123° 1.755' W
15	39° 30.871' N	123° 2.633' W
16	39° 30.811' N	123° 2.678' W
17	39° 31.152' N	123° 4.153' W
18	39° 38.189' N	123° 4.941' W
19	39° 39.574' N	123° 3.678' W
20	39° 41.241' N	123° 3.088' W
21	39° 56.030' N	123° 3.042' W
22	39° 56.368' N	123° 3.402' W
23	39° 56.391' N	123° 3.415' W
24	39° 56.252' N	123° 3.215' W
25	39° 56.266' N	123° 3.482' W
26	39° 56.598' N	123° 3.893' W
27	39° 56.598' N	123° 3.873' W
28	39° 56.623' N	123° 3.814' W
29	39° 56.600' N	123° 3.731' W
30	39° 56.559' N	123° 3.697' W
31	39° 56.559' N	123° 3.654' W
32	39° 56.580' N	123° 3.665' W
33	39° 56.567' N	123° 3.616' W
34	39° 56.585' N	123° 3.595' W
35	39° 57.310' N	123° 3.415' W
36	40° 1.116' N	123° 6.529' W
37	39° 59.152' N	123° 5.604' W
38	39° 31.728' N	123° 6.634' W
39	39° 38.920' N	123° 7.302' W
40	39° 36.067' N	123° 10.330' W
41	39° 34.306' N	123° 9.538' W
42	39° 34.296' N	123° 9.586' W
43	39° 33.621' N	123° 9.364' W
44	39° 33.549' N	123° 9.353' W
45	40° 1.842' N	123° 12.760' W
46	40° 3.539' N	123° 12.299' W
47	40° 18.958' N	123° 9.732' W
48	40° 17.579' N	123° 9.909' W
49	40° 3.034' N	123° 5.357' W



● 20200923 2140 Scattered Heat Sources within 500 Ft Buffer
 500 Ft Buffer

26 Ton Limit

BRANCH 5
August West
September 23, 2020

0 0.5 1 2
Miles
1:36,000
1 inch = 3,000 feet
NAD 83 Teale Albers
Contour Interval = 40 ft

Structures ● Drop Point
 Bridge [X] Mobile Weather Unit
 Dip Site [D] Repeater
 Water Source [W]
 Branch Break [|||]

Uncontrolled Fire Edge [---]
 Contained Line [---]
 Completed Dozer Line [---]

H - H - H Completed Hand Line
 R - R - R Road as Completed Line
 Proposed Dozer Line [---]

BRANCH 5
Zone Boundary [---]
 County Boundary [---]
 Federal DPA [---]
 Wilderness [---]

Local DPA [---]
 Bureau of Land Management [---]
 Operational Sectors [---]
 Native American [---]

BRANCH MAP
August Complex West Zone
CAMEU 10843
September 23, 2020