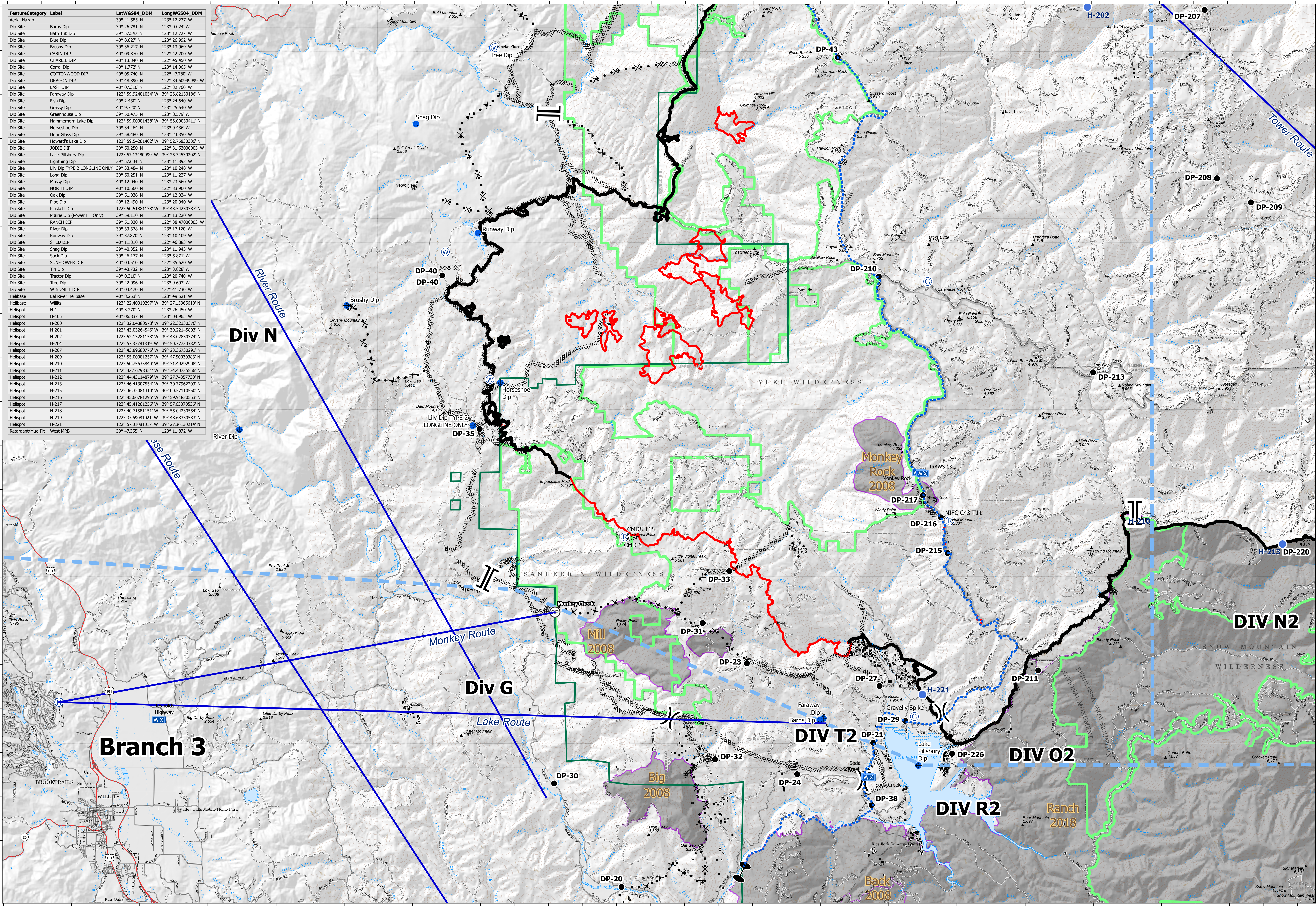
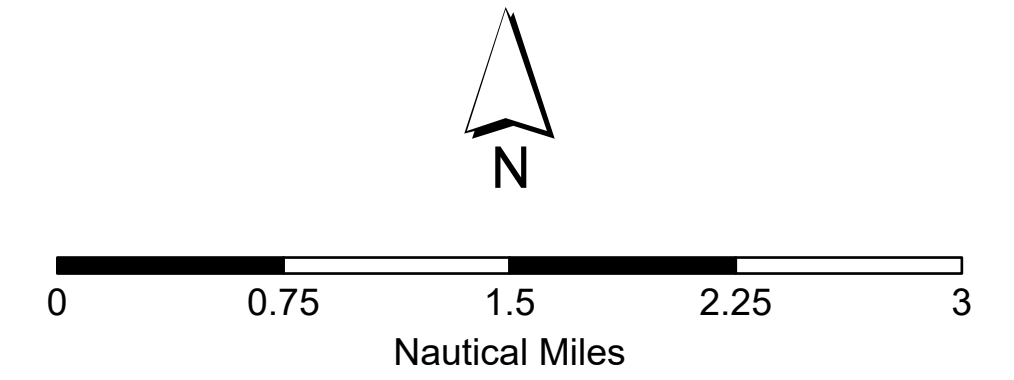


FeatureCategory	Label	LatWGS84_DDM	LongWGS84_DDM
Aerial Hazard		39° 41.585' N	123° 12.237' W
Dip Site	Barns Dip	39° 26.781' N	123° 0.024' W
Dip Site	Bath Tub Dip	39° 57.547' N	123° 12.727' W
Dip Site	Blue Dip	40° 8.827' N	123° 26.992' W
Dip Site	Brushy Dip	39° 36.217' N	123° 13.969' W
Dip Site	CABIN DIP	40° 09.370' N	122° 42.200' W
Dip Site	CHARLIE DIP	40° 13.340' N	122° 45.450' W
Dip Site	Corral Dip	40° 1.772' N	123° 14.965' W
Dip Site	COTTONWOOD DIP	40° 05.740' N	122° 47.780' W
Dip Site	DRAGON DIP	39° 48.890' N	122° 34.60999999' W
Dip Site	EAST DIP	40° 07.310' N	122° 32.760' W
Dip Site	Faraway Dip	122° 59.92481054' W	39° 26.82130186' N
Dip Site	Fish Dip	40° 2.430' N	123° 24.640' W
Dip Site	Grassy Dip	40° 9.720' N	123° 25.640' W
Dip Site	Greenhouse Dip	39° 50.475' N	123° 8.575' W
Dip Site	Hammerhorn Lake Dip	122° 59.00081438' W	39° 56.00030411' N
Dip Site	Horseshoe Dip	39° 34.464' N	123° 9.436' W
Dip Site	Hour Glass Dip	39° 58.480' N	123° 24.850' W
Dip Site	Howard's Lake Dip	122° 59.54281402' W	39° 52.76830386' N
Dip Site	XOJIE DIP	39° 50.250' N	122° 31.5300003' W
Dip Site	Lake Pillsbury Dip	122° 57.13480999' W	39° 25.74530202' N
Dip Site	Lightning Dip	39° 57.604' N	123° 11.393' W
Dip Site	Lily Dip TYPE 2 LONGLINE ONLY	39° 33.484' N	123° 10.248' W
Dip Site	Long Dip	39° 50.251' N	123° 11.227' W
Dip Site	Mossy Dip	40° 12.040' N	123° 23.560' W
Dip Site	NORTH DIP	40° 10.560' N	122° 33.960' W
Dip Site	Oak Dip	39° 51.036' N	123° 12.034' W
Dip Site	Pipe Dip	40° 12.490' N	123° 20.940' W
Dip Site	Plaskett Dip	122° 50.51081138' W	39° 43.54230387' N
Dip Site	Prairie Dip (Power Fill Only)	39° 59.110' N	123° 13.220' W
Dip Site	RANCH DIP	39° 51.330' N	122° 38.47000003' W
Dip Site	River Dip	39° 33.378' N	123° 17.120' W
Dip Site	Runway Dip	39° 37.870' N	123° 10.109' W
Dip Site	SHED DIP	40° 11.310' N	122° 46.883' W
Dip Site	Snag Dip	39° 40.352' N	123° 11.943' W
Dip Site	Sock Dip	39° 46.177' N	123° 5.871' W
Dip Site	SUNFLOWER DIP	40° 04.510' N	122° 35.620' W
Dip Site	Tin Dip	39° 43.732' N	123° 3.828' W
Dip Site	Tractor Dip	40° 0.310' N	123° 30.740' W
Dip Site	Tree Dip	39° 42.096' N	123° 9.693' W
Dip Site	WINDMILL DIP	40° 04.470' N	122° 41.730' W
Helibase	Eel River Helibase	40° 8.253' N	123° 49.521' W
Helibase	Willits	123° 22.40019297' W	39° 27.15365610' N
Helispot	H-1	40° 3.270' N	123° 26.450' W
Helispot	H-105	40° 06.837' N	123° 04.965' W
Helispot	H-200	122° 32.04880578' W	39° 22.32330376' N
Helispot	H-201	122° 43.03264546' W	39° 39.22145803' N
Helispot	H-202	122° 52.13281153' W	39° 43.02830374' N
Helispot	H-204	122° 57.87781349' W	39° 50.77730382' N
Helispot	H-207	122° 43.89680775' W	39° 23.36730291' N
Helispot	H-209	122° 55.00081257' W	39° 47.50030383' N
Helispot	H-210	122° 50.75635840' W	39° 31.49292908' N
Helispot	H-211	122° 42.16298351' W	39° 34.40725556' N
Helispot	H-212	122° 44.43114879' W	39° 27.74357730' N
Helispot	H-213	122° 46.41307554' W	39° 30.77622023' N
Helispot	H-215	122° 46.32081310' W	40° 00.57110550' N
Helispot	H-216	122° 45.66781295' W	39° 59.91830553' N
Helispot	H-217	122° 45.41281256' W	39° 57.63070336' N
Helispot	H-218	122° 40.71581151' W	39° 55.04220554' N
Helispot	H-219	122° 37.69081021' W	39° 48.63330533' N
Helispot	H-221	122° 57.01081017' W	39° 27.36130214' N
Retardant/Mud Pit	West MRB	39° 47.355' N	123° 11.872' W



Air Ops South
 August Complex South Zone
 CA-MNF-000753
 09/30/2020
 489,151 acres at 9/28/2020 2300 PDT



- Zone Breaks
- Helispot
- Zone Break
- Completed Dozer Line
- Structures
- FS Wilderness
- Camp
- Mobile Weather Unit
- Division Break
- Completed Hand Line
- Aviation Routes
- Dip Site
- Repeater
- Contained Line
- Aviation Checkpoint
- Drop Point
- Road Repair
- Proposed Dozer Line
- Fire History (2008-2018) > 300 ac
- Helibase
- Water Source
- Temporary Flight Restriction
- Administrative Forest
- Special Management Designations

S. Kovach
 9/29/2020 2342
 Acres from IR
 North American 1983 Datum, Lat/Long Grid