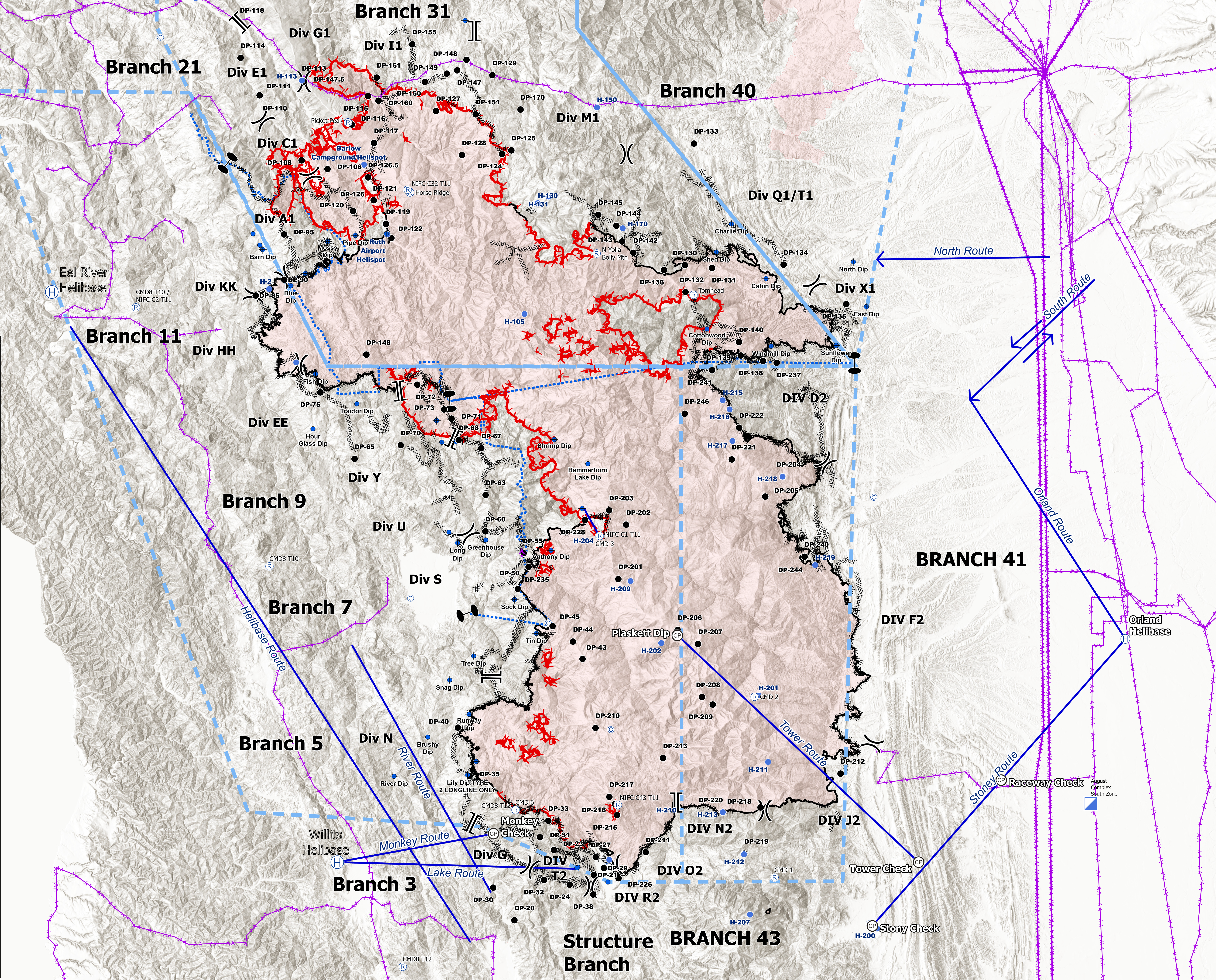
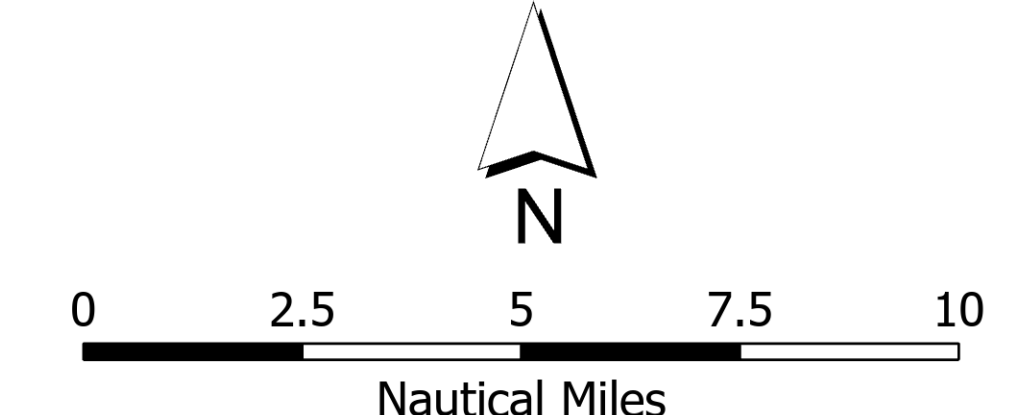


FeatureCategory	Label	LatWGS84_DDM	LongWGS84_DDM
Camp	Base Camp - Stony Ford	39° 22.667' N	122° 32.899' W
Camp	Covelo Camp	39° 46.256' N	123° 15.620' W
Camp	Eel River Camp	40° 8.378' N	123° 49.416' W
Camp	Gravelly Spike	39° 26.861' N	122° 57.246' W
Camp	Paskenta Spike	39° 53.522' N	122° 32.163' W
Camp	Ridge/Poison Spike Camp	39° 44.485' N	123° 02.708' W
Dip Site	Airport Dip	40° 12.613' N	123° 18.016' W
Dip Site	Anthony Dip	39° 49.728' N	123° 02.468' W
Dip Site	Barn Dip	40° 11.431' N	123° 29.671' W
Dip Site	Barns Dip	39° 26.781' N	123° 01.024' W
Dip Site	Bath Tub Dip	39° 57.547' N	123° 12.727' W
Dip Site	Blue Dip	40° 8.827' N	123° 26.992' W
Dip Site	Brushy Dip	39° 36.217' N	123° 13.969' W
Dip Site	Corral Dip	40° 1.772' N	123° 14.965' W
Dip Site	Faraway Dip	39° 26.820' N	122° 59.923' W
Dip Site	Fish Dip	40° 2.430' N	123° 24.640' W
Dip Site	Grassy Dip	40° 9.720' N	123° 25.640' W
Dip Site	Greenhouse Dip	39° 50.475' N	123° 8.579' W
Dip Site	Hammerhorn Lake Dip	39° 56.000' N	122° 59.801' W
Dip Site	Horseshoe Dip	39° 34.464' N	123° 9.436' W
Dip Site	Hour Glass Dip	39° 58.480' N	123° 24.850' W
Dip Site	Howard's Lake Dip	39° 52.768' N	122° 59.543' W
Dip Site	Lake Pillsbury Dip	39° 25.744' N	122° 57.134' W
Dip Site	Lightning Dip	39° 57.604' N	123° 11.393' W
Dip Site	Lily Dip TYPE 2 LONGLINE ONLY	39° 33.484' N	123° 10.248' W
Dip Site	Long Dip	39° 50.251' N	123° 11.227' W
Dip Site	Mossy Dip	40° 12.040' N	123° 23.560' W
Dip Site	Oak Dip	39° 51.036' N	123° 12.034' W
Dip Site	Pipe Dip	40° 12.490' N	123° 20.940' W
Dip Site	Plaskett Dip	39° 43.541' N	122° 50.517' W
Dip Site	Prairie Dip (Power Fill Only)	39° 59.110' N	123° 13.220' W
Dip Site	River Dip	39° 33.378' N	123° 17.120' W
Dip Site	Runway Dip	39° 37.870' N	123° 10.109' W
Dip Site	Shrimp Dip	39° 57.750' N	123° 02.151' W
Dip Site	Snag Dip	39° 40.352' N	123° 11.943' W
Dip Site	Snag Dip	39° 46.177' N	123° 5.871' W
Dip Site	Tin Dip	39° 43.732' N	123° 3.828' W
Dip Site	Tractor Dip	40° 0.310' N	123° 20.740' W
Dip Site	Truck Dip	40° 11.750' N	123° 29.951' W
Dip Site	Tree Dip	39° 42.096' N	123° 9.693' W
Dip Site	Wire Dip	40° 12.567' N	123° 30.597' W
Helibase	Eel River Helibase	40° 8.253' N	123° 49.521' W
Helibase	Willits Helibase	39° 27.153' N	123° 22.399' W
Helispot	H-1	40° 3.270' N	123° 26.450' W
Helispot	H-2	40° 08.581' N	123° 29.051' W
Helispot	H-200	39° 22.322' N	122° 32.047' W
Helispot	H-201	39° 39.221' N	122° 43.031' W
Helispot	H-202	39° 43.027' N	122° 52.131' W
Helispot	H-204	39° 50.777' N	122° 57.878' W
Helispot	H-207	39° 23.366' N	122° 43.896' W
Helispot	H-209	39° 47.499' N	122° 54.999' W
Helispot	H-210	39° 31.492' N	122° 50.755' W
Helispot	H-211	39° 34.406' N	122° 42.162' W
Helispot	H-212	39° 27.743' N	122° 44.430' W
Helispot	H-213	39° 30.779' N	122° 46.412' W
Helispot	H-215	40° 0.571' N	122° 46.321' W
Helispot	H-216	39° 59.918' N	122° 45.668' W
Helispot	H-217	39° 57.631' N	122° 45.413' W
Helispot	H-218	39° 55.042' N	122° 40.716' W
Helispot	H-219	39° 48.632' N	122° 37.690' W
Helispot	H-221	39° 27.360' N	122° 57.009' W
Incident Command Post		39° 31.261' N	122° 12.017' W
Mobile Weather Unit	Alder Point	39° 48.448' N	122° 56.702' W
Mobile Weather Unit	Alder Springs	40° 11.181' N	123° 35.452' W
Mobile Weather Unit	Eagle Peak	39° 39.097' N	122° 43.471' W
Mobile Weather Unit	Eel River	39° 55.617' N	123° 04.951' W
Mobile Weather Unit	Eel River	39° 49.517' N	123° 04.951' W
Mobile Weather Unit	Eel River	39° 49.474' N	123° 4.910' W
Mobile Weather Unit	IRAWS 13	39° 32.396' N	122° 57.009' W
Mobile Weather Unit	IRAWS 14	40° 0.399' N	123° 2.455' W
Mobile Weather Unit	IRAWS 26	40° 14.996' N	123° 29.015' W
Mobile Weather Unit	IRAWS 27	40° 12.398' N	122° 55.195' W
Mobile Weather Unit	IRAWS 31	40° 0.154' N	123° 14.999' W
Mobile Weather Unit	IRAWS 47	39° 43.712' N	123° 5.989' W
Mobile Weather Unit	Island Mtn	39° 2.709' N	123° 44.632' W
Mobile Weather Unit	Laytonville	39° 42.096' N	123° 29.143' W
Mobile Weather Unit	McGuire's	39° 21.159' N	123° 36.046' W
Mobile Weather Unit	Mendocino Pass	39° 48.426' N	122° 56.674' W
Mobile Weather Unit	Monkey Rock	39° 32.419' N	122° 57.121' W
Mobile Weather Unit	Poonkinney West	39° 44.007' N	123° 18.337' W
Mobile Weather Unit	Reynolds Highway	39° 26.757' N	123° 19.467' W
Mobile Weather Unit	Rodeo Valley	39° 40.119' N	123° 19.196' W
Mobile Weather Unit	Ruth	40° 15.062' N	123° 19.258' W
Mobile Weather Unit	Soda Creek	39° 25.499' N	122° 58.633' W
Mobile Weather Unit	Soda Creek	39° 25.477' N	122° 58.595' W
Mobile Weather Unit	Soldier Ridge	40° 00.467' N	123° 02.504' W



Air Ops
August Complex
CA-MNF-000753
10/02/2020
490,748 acres at 10/1/2020 1420 PDT



- Checkpoint
- Ⓜ Helibase
- ⚡ Aerial Hazard
- Dip Site
- Drop Point
- || Branch Break
- ⓧ Division Break
- Ⓢ Zone Break
- Ⓜ Helibase
- Ⓜ Incident Command Post
- Ⓜ Repeater
- Ⓜ Camp
- Ⓜ Aviation Routes
- Ⓜ Helibase
- Ⓜ Incident Command Post
- Ⓜ Repeater
- Ⓜ Camp
- Ⓜ Aviation Obstacle
- Ⓜ Uncontrolled Fire Edge
- Ⓜ Contained Line
- Ⓜ Completed Dozer Line
- Ⓜ Temporary Flight Restriction
- Ⓜ Zone Boundary
- Ⓜ Wildfire Daily Fire Perimeter
- Ⓜ Other