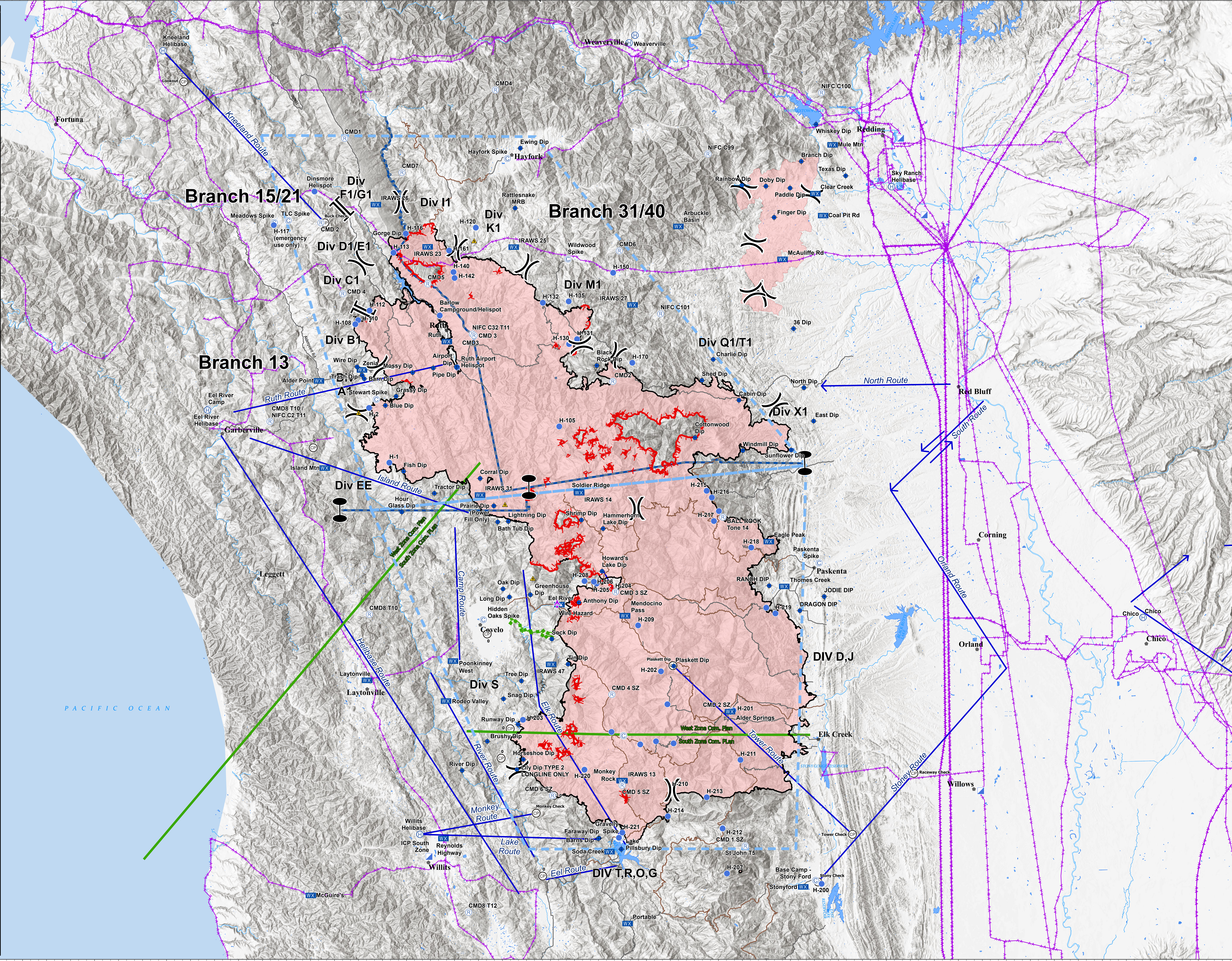
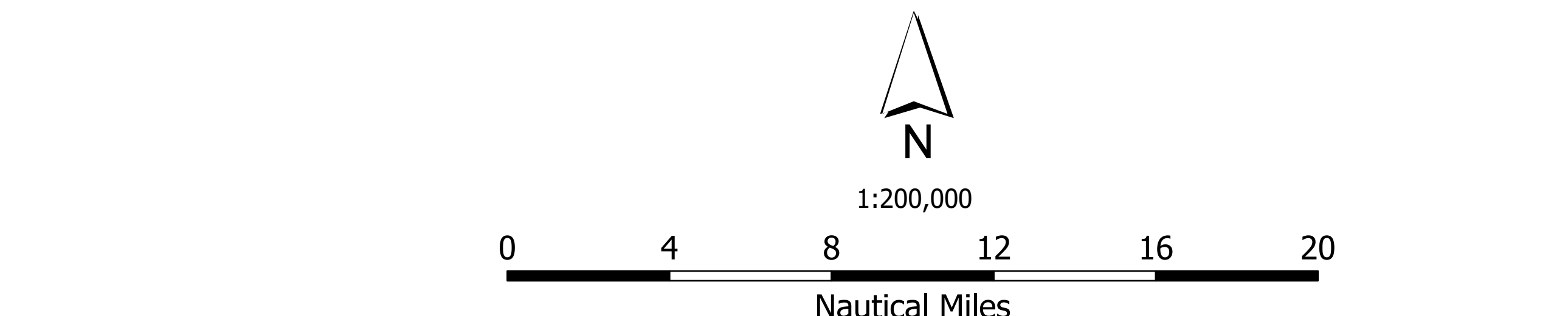


PC Point Type	Label	Latitude	Longitude
Camp	Base Camp - Stony Ford	39° 22.666' N	122° 32.809' W
Camp	East River Camp	40° 43.376' N	122° 49.416' W
Camp	Gravelly Spike	39° 26.861' N	122° 57.240' W
Camp	Hidden Oaks Spike	39° 48.041' N	123° 14.514' W
Camp	Meadows Spike	40° 26.541' N	123° 41.233' W
Camp	Paskenta Spike	39° 53.527' N	122° 32.163' W
Camp	Sawyer Spike	40° 09.412' N	122° 26.199' W
Camp	TLC Spike	40° 26.743' N	123° 39.460' W
Camp	Wildwood Spike	40° 23.113' N	123° 03.883' W
Dip Site	Airport Dip	40° 12.613' N	123° 18.016' W
Dip Site	Anthony Dip	39° 49.728' N	123° 02.468' W
Dip Site	Beam Dip	40° 14.431' N	122° 26.540' W
Dip Site	Barns Dip	39° 26.781' N	123° 0.024' W
Dip Site	Bath Tub Dip	39° 57.547' N	123° 12.727' W
Dip Site	Black Rock Dip	40° 12.760' N	123° 0.218' W
Dip Site	Blue Dip	40° 8.827' N	123° 26.992' W
Dip Site	Brushy Dip	40° 13.290' N	122° 13.699' W
Dip Site	Cabin Dip	40° 09.370' N	122° 42.200' W
Dip Site	Charlie Dip	40° 13.340' N	122° 45.450' W
Dip Site	Coral Dip	40° 1.772' N	123° 14.965' W
Dip Site	Cottonwood Dip	40° 05.740' N	122° 47.780' W
Dip Site	East Dip	40° 03.300' N	122° 32.560' W
Dip Site	Ewing Dip	40° 33.877' N	123° 09.961' W
Dip Site	Faraway Dip	39° 26.820' N	122° 59.923' W
Dip Site	Fish Dip	40° 2.430' N	123° 24.640' W
Dip Site	Gorge Dip	40° 25.443' N	123° 24.504' W
Dip Site	Grassy Dip	40° 13.290' N	122° 26.540' W
Dip Site	Greenhouse Dip	39° 50.475' N	123° 8.579' W
Dip Site	Hammerhorn Lake Dip	39° 56.000' N	122° 59.001' W
Dip Site	Horseshoe Dip	39° 34.464' N	123° 9.436' W
Dip Site	Hour Glass Dip	39° 58.480' N	123° 24.504' W
Dip Site	Howards Lake Dip	40° 13.290' N	122° 26.540' W
Dip Site	Lake Hibury Dip	39° 25.744' N	122° 57.134' W
Dip Site	Lightning Dip	39° 57.604' N	123° 11.393' W
Dip Site	Lily Dip TYPE 2 LONGLINE ONLY	39° 33.484' N	123° 10.248' W
Dip Site	Long Dip	39° 50.251' N	123° 11.227' W
Dip Site	Massy Dip	40° 13.290' N	122° 26.540' W
Dip Site	North Dip	40° 10.560' N	122° 33.960' W
Dip Site	Oak Dip	39° 51.036' N	123° 12.034' W
Dip Site	Pipe Dip	40° 12.490' N	123° 20.940' W
Dip Site	Plaskett Dip	39° 43.541' N	122° 50.517' W
Dip Site	Prask Dip (Power Fill Only)	40° 13.290' N	122° 26.540' W
Dip Site	Rattlesnake MRB	40° 28.050' N	123° 10.600' W
Dip Site	River Dip	39° 33.378' N	123° 17.120' W
Dip Site	Runway Dip	39° 37.870' N	123° 10.109' W
Dip Site	Shed Dip	40° 11.310' N	122° 46.883' W
Dip Site	Shrimp Dip	40° 13.290' N	122° 26.540' W
Dip Site	Snag Dip	39° 46.352' N	123° 11.943' W
Dip Site	Sock Dip	39° 46.177' N	123° 5.871' W
Dip Site	Sunflower Dip	40° 04.510' N	122° 35.620' W
Dip Site	Tin Dip	39° 43.732' N	123° 3.828' W
Dip Site	Tractor Dip	40° 13.290' N	122° 26.540' W
Dip Site	Trash Dip	40° 11.750' N	123° 29.951' W
Dip Site	Tree Dip	39° 42.096' N	123° 9.693' W
Dip Site	Windmill Dip	40° 04.470' N	122° 41.730' W
Dip Site	Wire Dip	40° 12.567' N	123° 30.997' W
Helibase	Eel River Helibase	40° 13.290' N	122° 26.540' W
Helibase	Knoeland Helibase	40° 43.140' N	123° 55.631' W
Helibase	Willits Helibase	39° 27.153' N	123° 22.399' W
Helibase	Barlow Campground/Helispot	40° 17.599' N	123° 20.146' W
Helibase	Dumore Helispot	40° 29.586' N	123° 36.149' W
Helispot	H-1	40° 13.290' N	122° 26.540' W
Helispot	H-105	40° 06.837' N	123° 04.965' W
Helispot	H-108	40° 16.710' N	123° 30.854' W
Helispot	H-110	40° 17.110' N	123° 30.496' W
Helispot	H-112	40° 18.043' N	123° 29.660' W
Helispot	H-113	40° 13.290' N	122° 26.540' W
Helispot	H-116	40° 25.545' N	123° 24.509' W
Helispot	H-117 (emergency use only)	40° 26.290' N	123° 41.300' W
Helispot	H-120	40° 26.148' N	123° 15.600' W
Helispot	H-130	40° 14.848' N	123° 03.727' W
Helispot	H-131	40° 13.290' N	122° 26.540' W
Helispot	H-132	40° 18.863' N	123° 07.066' W
Helispot	H-135	40° 18.995' N	123° 03.781' W
Helispot	H-140	40° 21.823' N	123° 18.423' W
Helispot	H-142	40° 21.245' N	123° 18.281' W
Helispot	H-150	40° 21.777' N	123° 58.134' W
Helispot	H-161	40° 23.912' N	123° 18.985' W
Helispot	H-170	40° 13.030' N	122° 55.709' W
Helispot	H-2	40° 08.581' N	123° 29.051' W
Helispot	H-200	39° 22.322' N	122° 32.047' W
Helispot	H-201	39° 29.221' N	122° 43.031' W
Helispot	H-202	39° 43.027' N	122° 52.131' W
Helispot	H-203	39° 38.322' N	123° 9.494' W
Helispot	H-204	39° 50.777' N	122° 57.878' W
Helispot	H-205	39° 51.565' N	123° 0.234' W
Helispot	H-206	39° 51.754' N	123° 0.981' W
Helispot	H-207	39° 23.366' N	122° 43.896' W
Helispot	H-208	39° 51.808' N	123° 01.759' W
Helispot	H-209	39° 47.499' N	122° 54.999' W
Helispot	H-210	39° 31.492' N	122° 50.755' W
Helispot	H-211	39° 44.400' N	122° 42.162' W
Helispot	H-212	39° 27.743' N	122° 44.430' W
Helispot	H-213	39° 30.779' N	122° 46.412' W
Helispot	H-214	39° 28.937' N	122° 51.291' W
Helispot	H-215	40° 00.571' N	122° 46.321' W
Helispot	H-216	40° 13.290' N	122° 26.540' W
Helispot	H-217	39° 57.631' N	122° 45.413' W
Helispot	H-218	39° 55.042' N	122° 40.716' W
Helispot	H-219	39° 48.632' N	122° 37.690' W
Helispot	H-220	39° 33.477' N	123° 1.759' W
Helispot	H-221	39° 23.260' N	122° 57.009' W
Helispot	Ruth Airport Helispot	40° 12.566' N	123° 17.922' W
Incident Command Post	ICP South Zone	39° 31.261' N	122° 12.017' W
Incident Command Post	ICP South Zone	40° 34.740' N	122° 21.474' W
Mobile Weather Unit	IRAWS 13	39° 25.001' N	123° 21.231' W
Mobile Weather Unit	IRAWS 13	39° 48.440' N	122° 56.702' W
Mobile Weather Unit	Alder Point	40° 11.181' N	123° 35.452' W
Mobile Weather Unit	Alder Springs	39° 39.097' N	122° 43.471' W
Mobile Weather Unit	Eagle Peak	39° 55.617' N	122° 38.517' W
Mobile Weather Unit	Eel River	39° 49.517' N	123° 04.951' W
Mobile Weather Unit	IRAWS 13	40° 13.290' N	122° 26.540' W
Mobile Weather Unit	IRAWS 14	40° 03.399' N	123° 2.455' W
Mobile Weather Unit	IRAWS 23	40° 24.263' N	123° 21.734' W
Mobile Weather Unit	IRAWS 25	40° 24.263' N	123° 10.790' W
Mobile Weather Unit	IRAWS 27	40° 12.398' N	122° 55.195' W
Mobile Weather Unit	IRAWS 31	40° 11.541' N	122° 14.999' W
Mobile Weather Unit	IRAWS 47	39° 43.712' N	123° 5.989' W
Mobile Weather Unit	Island Mtn	40° 2.709' N	123° 34.632' W
Mobile Weather Unit	Laytonville	39° 42.098' N	123° 29.143' W
Mobile Weather Unit	McGuire's	39° 21.159' N	123° 36.046' W
Mobile Weather Unit	McGuire's	40° 48.430' N	122° 36.974' W
Mobile Weather Unit	Mendocino Pass	39° 32.419' N	122° 57.121' W
Mobile Weather Unit	Monkey Rock	39° 44.007' N	123° 18.337' W
Mobile Weather Unit	Poonkinney West	39° 18.514' N	122° 56.386' W
Mobile Weather Unit	Portable	39° 26.757' N	123° 19.467' W
Mobile Weather Unit	Reynolds Highway	40° 10.119' N	122° 19.286' W
Mobile Weather Unit	Rodeo Valley	40° 15.062' N	123° 19.258' W
Mobile Weather Unit	Ruth	39° 25.499' N	122° 58.633' W
Mobile Weather Unit	Soda Creek	40° 00.487' N	122° 02.504' W
Mobile Weather Unit	Soldier Ridge	39° 23.037' N	122° 34.373' W
Mobile Weather Unit	Stonyford	40° 15.253' N	122° 36.974' W
Mobile Weather Unit	Thames Creek	40° 12.274' N	123° 29.999' W
Mobile Weather Unit	Zonia	40° 12.274' N	123° 29.999' W
Repeater	CMD 1 SZ	39° 26.05' N	122° 41.597' W
Repeater	CMD 2 SZ	40° 26.554' N	123° 35.312' W
Repeater	CMD 3 SZ	39° 29.120' N	122° 43.406' W
Repeater	CMD 4 SZ	40° 15.670' N	123° 15.789' W
Repeater	CMD 5 SZ	39° 50.76' N	122° 57.851' W
Repeater	CMD 6 SZ	40° 19.666' N	123° 32.464' W
Repeater	CMD 8 SZ	39° 40.785' N	122° 58.309' W
Repeater	CMD 9 SZ	39° 31.963' N	122° 57.028' W
Repeater	CMD 10 SZ	39° 30.954' N	122° 53.688' W
Repeater	CMD 11	40° 34.767' N	123° 32.352' W
Repeater	CMD 12	40° 11.212' N	122° 58.174' W
Repeater	CMD 3	40° 15.600' N	123° 15.784' W
Repeater	CMD 4	40° 29.534' N	123° 13.151' W
Repeater	CMD 5	40° 20.667' N	123° 21.684' W
Repeater	CMD 6	40° 23.910' N	122° 57.350' W



**Air Ops**  
**August Complex**  
 CA-MNF-000753  
 10/22/2020



- Cities
- ▲ Aerial Hazard
- Camp
- Dip Site
- Helibase
- Helispot
- Incident Command Post
- Mobile Weather Unit
- Repeater
- Safety Zone
- Zone Break
- Division Break
- Branch Break
- Aviation Checkpoints
- Uncontrolled Fire Edge
- Contained Line
- Temporary Flight Restriction
- Escape Route
- Ridge/Geographic Feature
- Comms Plan Break Line
- Wildfire Daily Fire Perimeter
- Other
- Lake / Pond
- Stream / River
- Aviation Routes
- Aviation Obstacle
- County Road
- Forest Road

briangardner  
 10/22/2020 0635  
 North American 1983