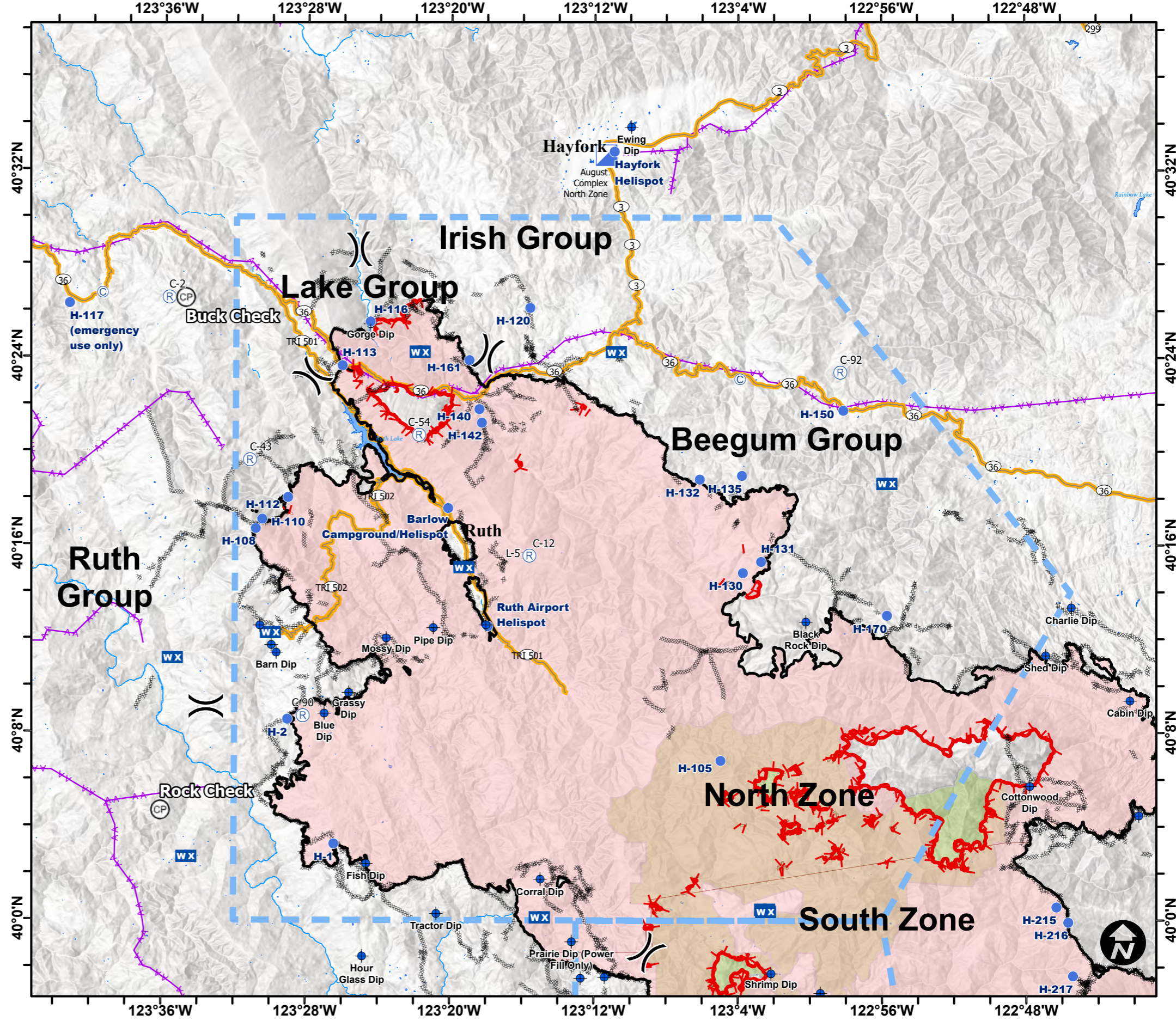


Feature	Label	Lat	Long
Camp	Base Camp - Hayfork	40° 32.661' N	123° 11.420' W
Camp	TLC Spike	40° 26.743' N	123° 39.460' W

Dip Site	Anthony Dip	39° 49.727' N	123° 02.468' W
Dip Site	Barns Dip	39° 26.781' N	123° 00.025' W
Dip Site	Bath Tub Dip	39° 57.547' N	123° 12.727' W
Dip Site	Black Rock Dip	40° 12.760' N	123° 0.218' W
Dip Site	Blue Dip	40° 08.826' N	123° 26.993' W
Dip Site	Brushy Dip	39° 36.216' N	123° 13.970' W
Dip Site	Cabin Dip	40° 09.370' N	122° 42.200' W
Dip Site	Charlie Dip	40° 13.340' N	122° 45.450' W
Dip Site	Corral Dip	40° 01.772' N	123° 14.966' W
Dip Site	Cottonwood Dip	40° 05.740' N	122° 47.780' W
Dip Site	Ewing Dip	40° 33.877' N	123° 09.961' W
Dip Site	Faraway Dip	39° 26.820' N	122° 59.923' W
Dip Site	Fish Dip	40° 02.429' N	123° 24.641' W
Dip Site	Gorge Dip	40° 25.443' N	123° 24.504' W
Dip Site	Grassy Dip	40° 09.719' N	123° 25.641' W
Dip Site	Greenhouse Dip	39° 50.474' N	123° 08.580' W
Dip Site	Hammerhorn Lake Dip	39° 55.999' N	122° 59.000' W
Dip Site	Horseshoe Dip	39° 34.463' N	123° 09.437' W
Dip Site	Hour Glass Dip	39° 58.479' N	123° 24.851' W
Dip Site	Howard's Lake Dip	39° 52.767' N	122° 59.542' W
Dip Site	Lake Pillsbury Dip	39° 25.744' N	122° 57.134' W
Dip Site	Lightning Dip	39° 57.603' N	123° 11.394' W
Dip Site	Lily Dip TYPE 2 LONGLINE ONLY	39° 33.484' N	123° 10.249' W
Dip Site	Long Dip	39° 50.251' N	123° 11.228' W
Dip Site	Mossy Dip	40° 12.039' N	123° 23.561' W
Dip Site	Oak Dip	39° 51.036' N	123° 12.035' W
Dip Site	Pipe Dip	40° 12.489' N	123° 20.941' W
Dip Site	Plaskett Dip	39° 43.541' N	122° 50.517' W
Dip Site	Prairie Dip (Power Fill Only)	39° 59.109' N	123° 13.220' W
Dip Site	River Dip	39° 33.377' N	123° 17.121' W
Dip Site	Runway Dip	39° 37.870' N	123° 10.109' W
Dip Site	Shed Dip	40° 11.310' N	122° 46.883' W
Dip Site	Shrimp Dip	39° 57.749' N	123° 02.151' W
Dip Site	Snag Dip	39° 40.352' N	123° 11.944' W
Dip Site	Sock Dip	39° 46.177' N	123° 05.872' W
Dip Site	Tin Dip	39° 43.732' N	123° 03.829' W
Dip Site	Tractor Dip	40° 00.309' N	123° 20.741' W
Dip Site	Tree Dip	39° 42.096' N	123° 09.694' W
Dip Site	Wildwood Dip	40° 23.113' N	123° 03.883' W

Helispot	Barlow CG/Helispot	40° 17.599' N	123° 20.146' W
Helispot	Hayfork Airport	40° 32.820' N	123° 10.778' W
Helispot	Ruth Airport Airport	40° 12.566' N	123° 17.922' W
Helibase	Weaverville Airport	44° 50.010' N	122° 55.342' W
Helibase	Willits Airport	39° 27.153' N	123° 22.399' W

ICP	ICP North	40° 48.312' N	124° 09.027' W
ICP	ICP South	39° 25.001' N	123° 21.231' W



Pilot Map
AUGUST COMPLEX
CA-MNF-000753
11/9/2020

- ◆ Dip Site
- Incident Command Post
- R Repeater
-) Division Break
- Roads
- Helispot
- WX Mobile Weather Unit
- C Camp
- WildernessMNF

