

# AUGUST COMPLEX

## SOUTH ZONE

INCIDENT ACTION PLAN

WEDNESDAY SEPTEMBER 23, 2020

CA-MNF-000753 (P5NFP420 0508) FS

CA-MNF-000753 (NFP4) DOI

OPERATIONAL PERIOD 0700 TO 1900



PLANNING SCHEDULE

AUGUST COMPLEX FIRE ICP

0700-Day Operational Briefing  
1200-Command and General Staff  
1700-Tactics and Pre-Plan Meeting  
1900-Planning Meeting

Covid-19 Screening Tool



Driving Tip of the Day

If you are feeling tired pullover and take a break

UTM Zone 10N

NAD 83

GREAT BASIN TEAM 2

TONY DEMASTERS, INCIDENT COMMANDER



August Complex North Zone IAP



August Complex South Zone IAP



August Complex North Zone Maps



August Complex South Zone Maps




August Complex West Zone  
Maps and IAP

## INCIDENT OBJECTIVES (ICS 202)

<b>1. Incident Name:</b>		<b>2. Operational Period: DAY</b>	
AUGUST COMPLEX		Date/Time From: 09/23/2020 0700      WED	Date/Time To: 09/23/2020 1900      WED
<b>3. Objective(s):</b>			
<p><b>Leaders Intent:</b> Suppress the August Complex fires using management strategies and tactics that provide the highest likelihood of success given risks to responders.</p> <p><b>Management Objectives:</b> Ensure the safety and well being of emergency responders and the public by making timely risk-informed decisions that align with the Agency values. Protect natural and cultural resources of Federal, State, and Local/Private interest by engaging agency resource advisors, partners and community stakeholders in effective communication and planning. Foster good relationships with local cooperators, stakeholders and the public by providing coordinated, accurate and timely information. Keep cost commensurate with values at risk by working with the local unit and coordinating with the Agency Administrator and Incident Business Advisor. Coordinate with the COVID-19 Advisors to ensure COVID mitigation measures are in alignment with Agency expectations and adapt as necessary to changing conditions. Coordinate suppression efforts with Cal Fire Team 5 / Alaska Team 1 under the Coast Range Area Command.</p> <p><b>Control Objectives:</b> Hold fire in the Sanhedrin Wilderness North of Mill Creek from Windy Gap to Garcia Ranch. Limit westward fire growth where possible within the Sanhedrin Wilderness.</p>			
<b>4. Operational Period Command Emphasis:</b>			
See attached Weather Forecast			
Protect structures, outbuildings and values at risk in and around Pillsbury Lake and Rice area.			
<b>General Situational Awareness:</b>			
See attached safety message			
<b>5. Site Safety Plan Required?</b> Yes <input type="checkbox"/> No <input checked="" type="checkbox"/>			
<b>Approved Site Safety Plan(s) Located at:</b>			
<b>6. Incident Action Plan</b> (the items checked below are included in this Incident Action Plan):			
<input checked="" type="checkbox"/> ICS 202	<input type="checkbox"/> ICS 207	<b>Other Attachments:</b>	
<input checked="" type="checkbox"/> ICS 203	<input type="checkbox"/> ICS 208	<input checked="" type="checkbox"/> 214 _____	
<input checked="" type="checkbox"/> ICS 204	<input checked="" type="checkbox"/> ICS 220	<input type="checkbox"/> _____	
<input checked="" type="checkbox"/> ICS 205	<input checked="" type="checkbox"/> Map/Chart	<input type="checkbox"/> _____	
<input type="checkbox"/> ICS 205A	<input checked="" type="checkbox"/> Weather Forecast/Tides/Currents	<input type="checkbox"/> _____	
<input type="checkbox"/> ICS 206			
<b>7. Prepared by:</b> JAMES SILVA		<b>Position/Title:</b> RESL	
<b>8. Approved by Incident Commander:</b>		<b>Signature:</b>	
<b>Name:</b> TONY DEMASTER		<b>Signature:</b>	
<b>ICS 202</b>	<b>IAP Page</b>	<b>Date/Time:</b> 09/22/2020 2100	

## ORGANIZATION ASSIGNMENT LIST (ICS 203)

1. Incident Name:		2. Operational Period: DAY	
AUGUST COMPLEX		Date/Time From: 09/23/2020 0700	Date/Time To: 09/23/2020 1900
		WED	WED
3. Incident Commander(s) and Command Staff:			
IC/UC	TONY DEMASTERS, CURTIS COOTS (T)	GROUND SUPPORT UNIT	DAVE FRITZSCHE, BUTCH SMITH
DEPUTY	KIM MARTIN	COMMUNICATIONS UNIT	SCOTT HARNESS, G SCHETZLE(T)
SAFETY OFFICER	LANEY CUTSHAW, B. HOFFMAN	MEDICAL UNIT	TIM EAGAN
INFORMATION OFFICER	DON JAQUES, DAVID EAKER, BOBBI FILBERT	FOOD UNIT	LINDA HOLDER, SHELLY JOHNSON
LIAISON OFFICER	PERRY OLDENBURG, BRIAN NEILSON	SECURITY UNIT	JAKE SCHOPPE
COVID-19 COORDINATOR	BRUCE HICKS	ORDERING	BORIS POFF
HUMAN RESOURCE SPECIALIST	KAREN MORA	7. Operations Section:	
COVID LIAISON	BERGSTROM	OPS SECTION CHIEF	CHAD OLSON, RICH STILES(T)
4. Agency/Organization Representative(s):		DEPUTY OPS CHIEF	MARK KOONTZ
Agency/Organization	Name	PLANNING OPS	ROD COLLINS, BRIAN BUNN(T)
USFS	ANN CARLSON, FRANK AEBLY, CHRISTINE HILL	Branch	41
FMO	CURTIS COOTS, TERRY NICKERSON	BRANCH DIRECTOR	LANCE CARBONE,
READ	BOB WEAVER	DIVISION/GROUP	DELTA 2 / FOXTROT 2
CAL FIRE	C. THOMPSON (TGU UNIT CHIEF)	DIVISION/GROUP	JULIET 2
BLM	ALEX MIYAGISHIMA	DIVISION/GROUP	NOVEMBER 2
FS US ARMY LIAISON	FRANK GUZMAN, MICHELLE WOODS JOHN BUEHLER, JASON CLAWSON	Branch	43
US ARMY	LTC JIM WADE	BRANCH DIRECTOR	ROBERT LOPEZ
AIR RESOURCE ADVISOR	JEREMY MICHAEL	DIVISION/GROUP	ROMEO 2
5. Planning Section:		DIVISION/GROUP	OSCAR 2
CHIEF	NICK YTURRI, JAKE LIGHTFOOT(T)	DIVISION/GROUP	TANGO 2
DEPUTY	CAMERON TANGIER (PSC2) (T)	DIVISION/GROUP	NIGHT GRP
SITUATION UNIT	JOSH RELPH, JOE KAFKA,	DIVISION/GROUP	FIRING GRP
GIS SPECIALIST	BILL SILVA, LAURA KOBLET,	Branch	STRUCTURE PROTECTION
RESOURCES UNIT	JAMES SILVA	BRANCH DIRECTOR	PAUL HUTTA
DEMOBILIZATION UNIT	LORIE PRICE AMY KINSELLA (SCKN - T)	DIVISION/GROUP	PILLSBURY STRUCT GRP
FIRE BEHAVIOR ANALYST	DUANE WEIS	DIVISION/GROUP	RICE STRUCT GRP
INCIDENT METEOROLOGIST	BEN BARTOS	DIVISION/GROUP	STONYFORD STAGING
TRAINING SPECIALIST	DON WASHCO	DIVISION/GROUP	PLANNING OPS
ITSS	ALEX PARK, ROGER CHRISTOPHER,	7b. Air Operations Branch:	
6. Logistics Section:		AIR OPS BRANCH DIRECTOR	ERIC TALPIN
CHIEF	MEGAN TIMONEY	AIR SUPPORT SUPERVISOR	JOE ROGAN
DEPUTY	HENRY HASSELHAN	8. Finance/Administration Section:	
SUPPLY UNIT	BECKY EVANS	CHIEF	CAROL BASS, SHARON HOLMES(T)
FACILITIES UNIT	EARL SLACK, CAMERON MCQUIVEY	PROCUREMENT UNIT	DAN MYERS
9. Prepared By: Name: JAMES SILVA		COMPENSATION UNIT	JUDY MAY
Position/Title: RESL		COST UNIT	WENDY MYERS
Signature: 		TIME UNIT	EILEEN CROUSE
ICS 203	IAP Page	Date/Time: 09/22/2020 2130	



# Fire Weather Forecast



**FORECAST NO:** 35  
**PREDICTION FOR:** 24 Hr Shift  
**SHIFT DATE:** Wednesday 9/23/2020  
**TIME AND DATE ISSUED:** 9/22/2020 1800 PDT

**INCIDENT:** August Complex  
**UNIT:** Mendocino NF  
**SIGNED:** *Benjamin Bartos*  
Incident Meteorologist (IMET)

## Discussion:

Today will see increasing cloud cover ahead of a weather front expected to arrive tomorrow. General winds over the fire will be southwest. Terrain winds are still expected in valleys and on lower slopes. Atmospheric conditions along with increased winds at ridges should help any smoke to vent. Increasing clouds and humidity will moderate temperatures overnight tonight. Tomorrow the weather front moving through will keep temperatures cooler, increase RH and cloud cover.

## WEATHER FORECAST FOR TODAY:

**SKY/WEATHER:** Increasing clouds. Smoke.  
**Max Temperature:** 70 to 75 higher elevations and 80 to 85 valleys.  
**Min RH:** 20 to 25 percent.  
**WINDS:**  
**-20 ft Level-WINDS**  
**Lower Valleys/Lower Slopes:** Terrain driven 5 to 10 mph.  
**Upper Ridges:** Southwest 10 to 15 mph.  
**TRANSPORT WINDS:** Southwest 10 to 15 mph. **Mixing Height:** 5,100 ft.

## TONIGHT:

**SKY/WEATHER:** Partly to mostly cloudy. Smoke.  
**Min Temperature:** Low 50s to mid 60s.  
**Max RH:** 80 to 90 percent lower elevations / 40 to 50 percent ridges and upper slopes.  
**WINDS:**  
**-20 ft Level-**  
**Valleys/Lower Slopes:** North-Northwest/down drainage 0 to 5 mph.  
**Upper Ridges:** Southwest 10 to 15 mph.

## THURSDAY:

**SKY/WEATHER:** Partly to mostly cloudy. Slightly cooler. 20% chance of a shower on the west side of the zone.  
**Max Temperature:** 70 to 75 higher elevations and 80 to 85 valleys.  
**Min RH:** 30 to 35 percent.  
**WINDS:**  
**-20 ft Level-WINDS**  
**Lower Valleys/Lower Slopes:** Terrain driven 5 to 10 mph.  
**Upper Ridges:** Southwest 5 to 10 mph gusting 15 mph.  
**TRANSPORT WINDS:** Southwest 10 to 15 mph. **Mixing Height:** 5,400 ft.

## Outlook Friday through Saturday:

Friday ridge top winds will shift to NW behind the front and conditions will begin to warm and dry again. Saturday temperatures will climb into the 90s and winds will switch to the NE. Hot, Dry Windy conditions will be present on the eastern side of the fire. **A fire weather watch has been issued for these conditions.**



Mendocino Pass



Stonyford



Monkey Rock



Solder Ridge



Thomes Creek

# FIRE BEHAVIOR FORECAST

**FORECAST NUMBER** 36

**TYPE OF FIRE** Wildland Fire

**FIRE NAME** August Complex South Zone

**OPERATIONAL PERIOD** 9/23/2020

**DATE ISSUED** 9/22/2020

**TIME ISSUED** 19:00

**UNIT** Mendocino NF

**SIGNED** /s/ *Duane Weis*, FBAN

## WEATHER

See Fire Weather Forecast

## GENERAL FIRE BEHAVIOR

Stronger winds from the southwest will increase chances for very active fire behavior. Smoke will have a better opportunity to ventilate, although this will be offset somewhat by increasing cloud cover. Moderate intensity surface fire will have no problem getting into the canopy, resulting in frequent torching. Upslope crown runs will be possible on moderate to steep slopes.

Grass – Surface rates of spread 40-50 chains per hour with flame lengths 4-7 feet

Grass/Shrub – Surface rates of spread 30-40 chains per hour with flame lengths 5-9 feet

Shrub – Surface rates of spread 50-60 chains per hour with flame lengths 14-18 feet

Timber – Surface rates of spread 8-15 chains per hour with flame lengths 3-8 feet

Probability of Ignition 70-80%

Maximum spotting distance 0.3 mile

## SPECIFIC FIRE BEHAVIOR

**Branch 41** –The possibility remains for isolated pockets of heat to show up in areas that have appeared cool over the past several days. Reburn is possible under dense canopies with significant needle fall.

**Branch 43** – Expect more intense fire behavior if burnout operations continue. Southwest wind orientation should provide more predictable conditions north of Lake Pillsbury.

**Night** – Increased winds in the afternoon may help fire activity carry over into the early evening, but moisture will rise fairly quickly causing the fire to settle down by mid shift. Even higher elevations should see good RH recovery overnight.

## AIR OPERATIONS

Today's weather should bring better opportunities for air operations with smoke much more likely to clear out by early afternoon.

## SAFETY

**Prefrontal winds have caused significant growth on this fire in the past. While most of the impact will be to our north, weather and fire behavior observations will be critical.**

# Fuels and Fire Behavior Advisory

## Northern California Geographic Area

September 7, 2020

**Subject:** Extended high temperatures continues to rapidly dry out an above normal live fuel load and dead fuels across Northern California. Extreme fire behavior and rapid to dangerous rates of spread has occurred during enhanced breezy periods accompanied with low humidity in areas clear of smoke. Extreme fire behavior will become more common as the fuel drying continues in September.

**Discussion:** Weeks of record temperatures in August and early September coupled with limited precipitation has been expanding extreme to severe drought conditions across much of the Geographic Area. All indications show these drought conditions persisting through September. The thunderstorm event of August 16-17 produced much lightning with limited rainfall that only lowered fire danger for a very brief period. Fires have recently shown or exhibited rapid or dangerous spread rates or generate extreme fire behavior once the any cap of smoke lifts out. There is a high potential for extreme fire behavior to persist under a wider range of conditions as fuel continues to dry and gusty north to northeast foehn winds events become more frequent.

**Difference from normal conditions:** Winter precipitation was below to well below normal with 55% of normal mountain snowpack. Late spring moisture during the heart of the low-mid elevation growing season led to **above normal fine fuel loading**. Typical dry summer conditions coupled with above normal temperatures has dramatically effected fuel dryness and fire danger indices. ERC's will generally range between 90th to 97th percentile the next 2 weeks with some PSA's experiencing seasonal record values. This time of year, live brush has typically low moisture levels due to normal seasonal drying but recently sampled live brush are at the at historic lows for many sampling sites.

### Fuels – Low Elevation Grass Crop

#### Sierra Foothills Rangeland Forage Production Data

- 40 years of consistent data
- 2019-20 growing season 4<sup>th</sup> highest total
- 5 seasons of above normal in a row

Top 5 Growing Seasons	Pounds/Acres
2017-18	5514
1992-93	4696
1982-83	4630
2019-20	4420
2004-05	4410

For more information about the very unseasonable environmental conditions occurring, follow these links:

[https://gacc.nifc.gov/oncc/fuelsFireDanger\\_Bi.php](https://gacc.nifc.gov/oncc/fuelsFireDanger_Bi.php)

[https://gacc.nifc.gov/oncc/fuelsFireDanger\\_Erc.php](https://gacc.nifc.gov/oncc/fuelsFireDanger_Erc.php)

[https://gacc.nifc.gov/oncc/fuelsFireDanger\\_Hundred.php](https://gacc.nifc.gov/oncc/fuelsFireDanger_Hundred.php)

<https://vegdril.unl.edu/Home/StateVegDRI.aspx?CA>

[https://gacc.nifc.gov/oncc/fuelsFireDanger\\_Thousand.php](https://gacc.nifc.gov/oncc/fuelsFireDanger_Thousand.php)

<https://www.esrl.noaa.gov/psd/eddi/>

#### Concerns to Firefighters and the Public:

- Cured fine fuel loading below 3,000' elevation is above normal, exhibiting very rapid fire spread.
- Firefighters should be prepared for potential extreme fire behavior and dangerous or otherwise rapid rates of spread at any time of day, especially during foehn wind events.
- The potential for extreme fire activity will be likely to continue until enough precipitation occurs to significantly increase fuel moisture.
- Rapid rates of spread could have a significant impact on public safety and make evacuations difficult.

#### Mitigation Measures:

- All local and visiting firefighters need to remain aware of current and expected weather and burning conditions and consider such information while making strategic and tactical decisions.
- Employ LCES principles (Lookouts, Communications, Escape Routes, Safety Zones).
- Review current fire potential products from Predictive Services at <https://gacc.nifc.gov/oncc/predictive/weather/index.htm> or potential Red Flag conditions from the National Weather Service and weather at <https://www.wrh.noaa.gov/fire2/cafw/>.

**Area of Concern:** All areas across Northern California could see very active fire behavior. The PSA numbers associated with those areas are NC01, NC02, NC03A, NC03B, NC04, NC05, NC06, NC07 and NC08.

**Division/Group Assignment List (ICS 204 WF)**  
**Controlled Unclassified Information//Basic**

<b>1. Incident Name:</b>			<b>3.</b>			
AUGUST COMPLEX			<b>Branch:</b>		<b>Division/Group:</b>	
<b>2. Operational Period:</b> DAY			41		DELTA 2 / FOXTROT 2	
Date/Time From: 09/23/2020 0700 WED		Date/Time To: 09/23/2020 1900 WED				
<b>4. Operations Personnel</b>						
<b>OPERATIONS CHIEF</b>		CHAD OLSON RICH STILES (T)		<b>DEPUTY OPS</b>		MARK KOONTZ
<b>PLANNING OPS</b>		ROD COLLINS, BRIAN BUNN (T)		<b>BRANCH DIRECTOR</b>		LANCE CARBONE
<b>DIVISION/GROUP SUPERVISOR</b>		MIKE JANISSE, ADAM MCKEAN (T)		<b>ABOD</b>		ERIC TALPIN
<b>5. Resources Assigned this Period</b>						
Strike Team / Task Force / Resource Designator		LWD	Leader	Number Persons	Drop Off PT./Time	Pick Up PT./Time
REAF			SARAH CHAMBERLIN	1	PASKENTA WORK STATION /0700	STONYFORD/1900
REAF			LOWELL THOMAS	1	STONYFORD/0700	STONYFORD/1900
<b>6. Control Operations/Work Assignments:</b>						
Continue to patrol and improve containment lines. Secure and mop lines as appropriate to ensure successful containment of fire. Secure and mop up firing operations utilizing existing hoselays and heavy equipment. Continue to back haul equipment as appropriate.						
<b>7. Special Instructions:</b>						
Use caution around snags and flag as needed for safety. Use caution when driving on roadways and on the fireline. Backhaul excessive equipment and trash. Contact READ for locations of naturally occurring asbestos. READS will call DIVS when entering.						
Follow CDC guidance and established local, state, and national guidance to ensure a healthy work environment. Adhere to the "module of one" concept to reduce physical exposure and transmission of COVID 19. Resources with symptoms notify COVID coordinator at 916-591-9006.						
<b>8. Division/Group Communication Summary</b>						
Function	Channel	RX Frequency N/W	RX Tone/NAC	TX Frequency N/W	TX Tone/NAC	Mode
TACTICAL	9	168.6000	136.5	168.6000	136.5	A
COMMAND	3	170.6875	136.5	166.5750	136.5	A
COMMAND	2	170.4125	136.5	165.9625	136.5	A
COMMAND	5	173.7500	136.5	163.8250	136.5	A
<b>9. Prepared By (Resource Unit Leader)</b>			<b>Approved By (Planning Section Chief)</b>		<b>Date</b>	<b>Time</b>
JAMES SILVA			JAKE LIGHTFOOT		09/22/2020	2130



## Division/Group Assignment List (ICS 204 WF)

Controlled Unclassified Information//Basic

<b>1. Incident Name:</b>			<b>3.</b>			
AUGUST COMPLEX			<b>Branch:</b>		<b>Division/Group:</b>	
<b>2. Operational Period:</b> DAY			<b>41</b>		<b>JULIET 2</b>	
Date/Time From: 09/23/2020 0700 WED		Date/Time To: 09/23/2020 1900 WED				
<b>4. Operations Personnel</b>						
<b>OPERATIONS CHIEF</b>		CHAD OLSON RICH STILES (T)		<b>DEPUTY OPS</b> MARK KOONTZ		
<b>PLANNING OPS</b>		ROD COLLINS, BRIAN BUNN (T)		<b>BRANCH DIRECTOR</b> LANCE CARBONE		
<b>DIVISION/GROUP SUPERVISOR</b>		UNSTAFFED		<b>ABOD</b> ERIC TALPIN		
<b>5. Resources Assigned this Period</b>						
Strike Team / Task Force / Resource Designator		LWD	Leader	Number Persons	Drop Off PT./Time	Pick Up PT./Time
<b>6. Control Operations/Work Assignments:</b>						
<b>7. Special Instructions:</b>						
Follow CDC guidance and established local, state, and national guidance to ensure a healthy work environment. Adhere to the "module of one" concept to reduce physical exposure and transmission of COVID 19. Resources with symptoms notify COVID coordinator at 916-591-9006.						
<b>8. Division/Group Communication Summary</b>						
Function	Channel	RX Frequency N/W	RX Tone/NAC	TX Frequency N/W	TX Tone/NAC	Mode
TACTICAL	10	168.2500	136.5	168.2500	136.5	A
COMMAND	2	170.4125	136.5	165.9625	136.5	A
<b>9. Prepared By (Resource Unit Leader)</b>			<b>Approved By (Planning Section Chief)</b>		<b>Date</b>	<b>Time</b>
JAMES SILVA			JAKE LIGHTFOOT		09/22/2020	2130

## Division/Group Assignment List (ICS 204 WF)

Controlled Unclassified Information//Basic

<b>1. Incident Name:</b>			<b>3.</b>			
AUGUST COMPLEX			<b>41</b>	<b>NOVEMBER 2</b>		
<b>2. Operational Period:</b> DAY						
Date/Time From: 09/23/2020 0700 WED		Date/Time To: 09/23/2020 1900 WED				
<b>4. Operations Personnel</b>						
<b>OPERATIONS CHIEF</b>		CHAD OLSON RICH STILES (T)		<b>DEPUTY OPS</b>		MARK KOONTZ
<b>PLANNING OPS</b>		ROD COLLINS, BRIAN BUNN (T)		<b>BRANCH DIRECTOR</b>		LANCE CARBONE
<b>DIVISION/GROUP SUPERVISOR</b>		UNSTAFFED		<b>ABOD</b>		ERIC TALPIN
<b>5. Resources Assigned this Period</b>						
Strike Team / Task Force / Resource Designator		LWD	Leader	Number Persons	Drop Off PT./Time	Pick Up PT./Time
<b>6. Control Operations/Work Assignments:</b>						
<b>7. Special Instructions:</b>						
Follow CDC guidance and established local, state, and national guidance to ensure a healthy work environment. Adhere to the "module of one" concept to reduce physical exposure and transmission of COVID 19. Resources with symptoms notify COVID coordinator at 916-591-9006.						
<b>8. Division/Group Communication Summary</b>						
Function	Channel	RX Frequency N/W	RX Tone/NAC	TX Frequency N/W	TX Tone/NAC	Mode
TACTICAL	11	166.7250	136.5	166.7250	136.5	A
COMMAND	1	170.0000	136.5	166.6750	136.5	A
<b>9. Prepared By (Resource Unit Leader)</b>			<b>Approved By (Planning Section Chief)</b>		<b>Date</b>	<b>Time</b>
JAMES SILVA			JAKE LIGHTFOOT		09/22/2020	2130

**Division/Group Assignment List (ICS 204 WF)**  
Controlled Unclassified Information//Basic

<b>1. Incident Name:</b>			<b>3.</b>			
AUGUST COMPLEX			<b>Branch:</b>		<b>Division/Group:</b>	
<b>2. Operational Period:</b> DAY			43		ROMEO 2	
Date/Time From: 09/23/2020 0700 WED	Date/Time To: 09/23/2020 1900 WED					
<b>4. Operations Personnel</b>						
<b>OPERATIONS CHIEF</b>	CHAD OLSON RICH STILES (T)		<b>DEPUTY OPS</b>		MARK KOONTZ	
<b>PLANNING OPS</b>	ROD COLLINS, BRIAN BUNN (T)		<b>BRANCH DIRECTOR</b>		ROBERT LOPEZ	
<b>DIVISION/GROUP SUPERVISOR</b>	JASON KIRKS CHRISTOPHER FRIAR (T)		<b>AOBD</b>		ERIC TALPIN	
<b>5. Resources Assigned this Period</b>						
Strike Team / Task Force / Resource Designator	LWD	Leader	Number Persons	Drop Off PT./Time	Pick Up PT./Time	
E-509 ENG6 CAYE WILDFIRE SERVICES	09/25	PIERRE MALATARE	3	GRAVELLY-SPIKE/0700	GRAVELLY-SPIKE/1900	
E-179 ENG3 TREASURE VALLEY	10/06	JOHN HOVEY	3	GRAVELLY-SPIKE/0700	GRAVELLY-SPIKE/1900	
E-52 WTS2 DIETZ	09/24	RICHARD MCGOWAN	1	GRAVELLY-SPIKE/0700	GRAVELLY-SPIKE/1900	
E-257 DOZ2 MOBELY CONSTRUCTION	09/26	JAMES GEOFF	2	GRAVELLY-SPIKE/0700	GRAVELLY-SPIKE/1900	
E-281 DOZ2 NORTH STATE	09/04	G. POE	2	GRAVELLY-SPIKE/0700	GRAVELLY-SPIKE/1900	
O-507 FMOD FIRE FALLERS	09/24	MARK HITSON	2	GRAVELLY-SPIKE/0700	GRAVELLY-SPIKE/1900	
O-822 TFLD	09/26	ANTHONY KORNEGAY	1	GRAVELLY-SPIKE/0700	GRAVELLY-SPIKE/1900	
O-871 HEQB	09/24	MICHAEL HUFFMAN	1	GRAVELLY-SPIKE/0700	GRAVELLY-SPIKE/1900	
O-825 HEQB (T)	10/03	BLAKE ADDISON	1	GRAVELLY-SPIKE/0700	GRAVELLY-SPIKE/1900	
O-911 SOFR (T)	09/27	MATT CHRISTENSEN	1	GRAVELLY-SPIKE/0700	GRAVELLY-SPIKE/1900	
REAF		PJ ANDERER	1	GRAVELLY-SPIKE/0700	GRAVELLY-SPIKE/1900	
REAF		LAUREN HOYLE	1	GRAVELLY-SPIKE/0700	GRAVELLY-SPIKE/1900	
REAF		MICHELL LAMPE	1	GRAVELLY-SPIKE/0700	GRAVELLY-SPIKE/1900	
<b>6. Control Operations/Work Assignments:</b>						
Point protection in the Pillsbury Ranch and Rice Fork summer home area. Build control lines around in-holdings in the area.						
Continue working on approved fire line locations in Elk Creek drainage and Sanhedrin Wilderness. Work closely with READs and REAFs inside of wilderness. Continue coordination and cooperation with CAL FIRE						
<b>7. Special Instructions:</b>						
<b>8. Division/Group Communication Summary</b>						
Function	Channel	RX Frequency N/W	RX Tone/NAC	TX Frequency N/W	TX Tone/NAC	Mode
COMMAND	6	170.0500	136.5	167.0750	136.5	A
TACTICAL	12	166.7750	136.5	166.7750	136.5	A
COMMAND	4	172.6750	136.5	163.0375	136.5	A
<b>9. Prepared By (Resource Unit Leader)</b>			<b>Approved By (Planning Section Chief)</b>		<b>Date</b>	<b>Time</b>
JAMES SILVA			JAKE LIGHTFOOT		09/22/2020	2130

**Division/Group Assignment List (ICS 204 WF)**  
 Controlled Unclassified Information//Basic

<b>1. Incident Name:</b>				<b>3.</b>			
AUGUST COMPLEX				<b>Branch:</b>		<b>Division/Group:</b>	
<b>2. Operational Period: DAY</b>				43		ROMEO 2	
Date/Time From: 09/23/2020 0700 WED		Date/Time To: 09/23/2020 1900 WED					
<b>4. Operations Personnel</b>							
<b>OPERATIONS CHIEF</b>		CHAD OLSON RICH STILES (T)		<b>DEPUTY OPS</b>		MARK KOONTZ	
<b>PLANNING OPS</b>		ROD COLLINS, BRIAN BUNN (T)		<b>BRANCH DIRECTOR</b>		ROBERT LOPEZ	
<b>DIVISION/GROUP SUPERVISOR</b>		JASON KIRKS CHRISTOPHER FRIAR (T)		<b>AOBD</b>		ERIC TALPIN	
<b>7. Special Instructions:</b>							
<p>Use caution around snags and flag as needed for safety. Use caution when driving on roadways and on the fireline. Backhaul excessive equipment and trash. READS will call DIVS when entering.</p> <p>Follow CDC guidance and established local, state, and national guidance to ensure a healthy work environment. Adhere to the "module of one" concept to reduce physical exposure and transmission of COVID 19. Resources with symptoms notify COVID coordinator at 916-591-9006.</p>							
<b>8. Division/Group Communication Summary</b>							
<b>Function</b>	<b>Channel</b>	<b>RX Frequency N/W</b>	<b>RX Tone/NAC</b>	<b>TX Frequency N/W</b>	<b>TX Tone/NAC</b>	<b>Mode</b>	
COMMAND	6	170.0500	136.5	167.0750	136.5	A	
TACTICAL	12	166.7750	136.5	166.7750	136.5	A	
COMMAND	4	172.6750	136.5	163.0375	136.5	A	
<b>9. Prepared By (Resource Unit Leader)</b>			<b>Approved By (Planning Section Chief)</b>			<b>Date</b>	<b>Time</b>
JAMES SILVA			JAKE LIGHTFOOT			09/22/2020	2130

**Division/Group Assignment List (ICS 204 WF)**  
Controlled Unclassified Information//Basic

<b>1. Incident Name:</b>				<b>3.</b>		
AUGUST COMPLEX				<b>Branch:</b>  <b>43</b>	<b>Division/Group:</b>  <b>OSCAR 2</b>	
<b>2. Operational Period:</b> DAY						
Date/Time From: 09/23/2020 0700 WED		Date/Time To: 09/23/2020 1900 WED				
<b>4. Operations Personnel</b>						
<b>OPERATIONS CHIEF</b>	CHAD OLSON, RICH STILES (T)			<b>DEPUTY OPS</b>	MARK KOONTZ	
<b>PLANNING OPS</b>	ROD COLLINS, BRIAN BUNN (T)			<b>BRANCH DIRECTOR</b>	ROBERT LOPEZ	
<b>DIVISION/GROUP SUPERVISOR</b>	BRIAN NATE AARON RADFORD (T)			<b>AOBD</b>	ERIC TALPIN	
<b>5. Resources Assigned this Period</b>						
Strike Team / Task Force / Resource Designator	LWD	Leader	Number Persons	Drop Off PT./Time	Pick Up PT./Time	
C-129 HC2 GE FORESTRY	09/25	GORGONIA IBARRA	20	GRAVELLY-SPIKE/0700	GRAVELLY-SPIKE/1900	
E-34 ENG3 FIRE TRAX 357	09/28	CHRISTOPHER PEACOCK	3	GRAVELLY-SPIKE/0700	GRAVELLY-SPIKE/1900	
E-491 ENG3 SPEARFISH	09/24	BILL WENZELL	3	GRAVELLY-SPIKE/0700	GRAVELLY-SPIKE/1900	
E-619 ENG5 AR-OUF E671	09/27	MATTHEW PAWLIKOWSKI	2	GRAVELLY-SPIKE/0700	GRAVELLY-SPIKE/1900	
E-624 ENG6 WV-MOF E651	09/28	STEVEN COOPER	6	GRAVELLY-SPIKE/0700	GRAVELLY-SPIKE/1900	
E-621 ENG6 BLM 1602	09/26	ANDREW WARE	4	GRAVELLY-SPIKE/0700	GRAVELLY-SPIKE/1900	
E-567 SKG1 CA-4133	09/24	JARED COVEY	2	GRAVELLY-SPIKE/0700	GRAVELLY-SPIKE/1900	
E-18 DOZ2 ROSEVEAR LLC	09/28	CARL STEINMANN	2	GRAVELLY-SPIKE/0700	GRAVELLY-SPIKE/1900	
E-425 DOZ2 MNF	09/29	DEREK LAMB	3	GRAVELLY-SPIKE/0700	GRAVELLY-SPIKE/1900	
E-275 DOZ2 BLACK RIDGE	09/24	TIM PEARSON	2	GRAVELLY-SPIKE/0700	GRAVELLY-SPIKE/1900	
E-277 DOZ2 K&B TIMBERWORKS	09/24	JAMES KELLAR	2	GRAVELLY-SPIKE/0700	GRAVELLY-SPIKE/1900	
E-115 WTS2 OUTDOOR VAC	10/01	DAVID ANTLEY	2	GRAVELLY-SPIKE/0700	GRAVELLY-SPIKE/1900	
E-21 WTS3 PARTRIDGE	09/27	WARREN PARTRIDGE	1	GRAVELLY-SPIKE/0700	GRAVELLY-SPIKE/1900	
O-403 FMOD ART OF FELLING	09/29	TOMSON BELLE	2	GRAVELLY-SPIKE/0700	GRAVELLY-SPIKE/1900	
O-1052 TFLD	10/02	BEN ROCHE	1	GRAVELLY-SPIKE/0700	GRAVELLY-SPIKE/1900	
O-366 TFLD	09/27	JASON WICKIZER	1	GRAVELLY-SPIKE/0700	GRAVELLY-SPIKE/1900	
O-903 HEQB	09/26	KEATON SHEPHARD	1	GRAVELLY-SPIKE/0700	GRAVELLY-SPIKE/1900	
O-566 HEQB	09/24	COREY FARRELL	1	GRAVELLY-SPIKE/0700	GRAVELLY-SPIKE/1900	
<b>8. Division/Group Communication Summary</b>						
Function	Channel	RX Frequency N/W	RX Tone/NAC	TX Frequency N/W	TX Tone/NAC	Mode
COMMAND	6	170.0500	136.5	167.0750	136.5	A
TACTICAL	8	168.2000	136.5	168.2000	136.5	A
COMMAND	4	172.6750	136.5	163.0375	136.5	A
<b>9. Prepared By (Resource Unit Leader)</b>			<b>Approved By (Planning Section Chief)</b>		<b>Date</b>	<b>Time</b>
JAMES SILVA			JAKE LIGHTFOOT		09/22/2020	2130

**Division/Group Assignment List (ICS 204 WF)**  
**Controlled Unclassified Information//Basic**

<b>1. Incident Name:</b>			<b>3.</b>			
AUGUST COMPLEX			<b>Branch:</b>		<b>Division/Group:</b>	
<b>2. Operational Period:</b> DAY			43		OSCAR 2	
Date/Time From: 09/23/2020 0700 WED	Date/Time To: 09/23/2020 1900 WED					
<b>4. Operations Personnel</b>						
<b>OPERATIONS CHIEF</b>		CHAD OLSON, RICH STILES (T)		<b>DEPUTY OPS</b> MARK KOONTZ		
<b>PLANNING OPS</b>		ROD COLLINS, BRIAN BUNN (T)		<b>BRANCH DIRECTOR</b> ROBERT LOPEZ		
<b>DIVISION/GROUP SUPERVISOR</b>		BRIAN NATE AARON RADFORD (T)		<b>AOBD</b> ERIC TALPIN		
<b>5. Resources Assigned this Period</b>						
Strike Team / Task Force / Resource Designator		LWD	Leader	Number Persons	Drop Off PT./Time	Pick Up PT./Time
O-630 HEQB (T)		09/24	RUSSELL DEAN	1	GRAVELLY-SPIKE/0700	GRAVELLY-SPIKE/1900
O-911 SOFR (T)		09/26	MATTHEW J CHRISTENSEN	1	GRAVELLY-SPIKE/0700	GRAVELLY-SPIKE/1900
E-611 AMBO MEDIC 4		09/24	TERU BAKER	2	GRAVELLY-SPIKE/0700	GRAVELLY-SPIKE/1900
O-898 EMPF		09/27	JOE WHITE	1	GRAVELLY-SPIKE/0700	GRAVELLY-SPIKE/1900
O-956 REMS 1		09/27	BRAD NOBLE	2	GRAVELLY-SPIKE/0700	GRAVELLY-SPIKE/1900
O-957 REMS 2		09/27	AUSTIN STOWE	2	GRAVELLY-SPIKE/0700	GRAVELLY-SPIKE/1900
US ARMY RUGGED 6 CHARLIE		09/24	ORSEN / ALLEN / 2LT BARTON	22	STONYFORD/0700	GRAVELLY-SPIKE/1900
<b>6. Control Operations/Work Assignments:</b>						
Point protection in the Pillsbury Ranch and Rice Fork summer home area. Build control lines around inholdings in the area.						
Continue working on approved fire line locations in Elk Creek drainage and Sanhedrin Wilderness. Work closely with READs and REAFs inside of wilderness. Continue coordination and cooperation with CAL FIRE						
<b>7. Special Instructions:</b>						
Follow CDC guidance and established local, state, and national guidance to ensure a healthy work environment. Adhere to the "module of one" concept to reduce physical exposure and transmission of COVID 19. Resources with symptoms notify COVID coordinator at 916-591-9006.						
<b>8. Division/Group Communication Summary</b>						
Function	Channel	RX Frequency N/W	RX Tone/NAC	TX Frequency N/W	TX Tone/NAC	Mode
COMMAND	6	170.0500	136.5	167.0750	136.5	A
TACTICAL	8	168.2000	136.5	168.2000	136.5	A
COMMAND	4	172.6750	136.5	163.0375	136.5	A
<b>9. Prepared By (Resource Unit Leader)</b>		<b>Approved By (Planning Section Chief)</b>		<b>Date</b>	<b>Time</b>	
JAMES SILVA		JAKE LIGHTFOOT		09/22/2020	2130	

**Division/Group Assignment List (ICS 204 WF)**  
Controlled Unclassified Information//Basic

<b>1. Incident Name:</b>				<b>3.</b>		
AUGUST COMPLEX				<b>Branch:</b>  <b>43</b>	<b>Division/Group:</b>  <b>TANGO 2</b>	
<b>2. Operational Period: DAY</b>						
Date/Time From: 09/23/2020 0700 WED		Date/Time To: 09/23/2020 1900 WED				
<b>4. Operations Personnel</b>						
<b>OPERATIONS CHIEF</b>	CHAD OLSON, RICH STILES (T)			<b>DEPUTY OPS</b>	MARK KOONTZ	
<b>PLANNING OPS</b>	ROD COLLINS, BRIAN BUNN (T)			<b>BRANCH DIRECTOR</b>	ROBERT LOPEZ	
<b>DIVISION/GROUP SUPERVISOR</b>	CORY HENRY FRANK ALVES (T)			<b>ABOD</b>	ERIC TALPIN	
<b>5. Resources Assigned this Period</b>						
Strike Team / Task Force / Resource Designator	LWD	Leader	Number Persons	Drop Off PT./Time	Pick Up PT./Time	
E-697 ENG3 TMU 341	10/05	PAUL VASVURG	4	GRAVELLY-SPIKE/0700	GRAVELLY-SPIKE/1900	
E-196 ENG6 SOUTHEAST FOREST RESOURCES	09/28	STEVEN GUCKIAN	3	GRAVELLY-SPIKE/0700	GRAVELLY-SPIKE/1900	
E-663 ENG6 METAL WORKS	10/02	DAMON ANDERSON	3	GRAVELLY-SPIKE/0700	GRAVELLY-SPIKE/1900	
E-615 ENG6 FL FNF-ANG #611	10/06	SARAH STRICKLAND	4	GRAVELLY-SPIKE/0700	GRAVELLY-SPIKE/1900	
E-566 SKG2 BULL CREEK	09/24	EARL GEHRKE	2	GRAVELLY-SPIKE/0700	GRAVELLY-SPIKE/1900	
E-271 DOZ2 BATTE ENTERPRISES	09/26	MATT LASITER	2	GRAVELLY-SPIKE/0700	GRAVELLY-SPIKE/1900	
E-48 DOZ2 WYCOFF	09/24	LARRY OWEN	2	GRAVELLY-SPIKE/0700	GRAVELLY-SPIKE/1900	
E-136 DOZ2 WEST LANDS	09/30	BRANDON FERRIS	2	GRAVELLY-SPIKE/0700	GRAVELLY-SPIKE/1900	
E-173 DOZ2 TOUGH COMPANY 02	10/02	JEREMEY TODD	2	GRAVELLY-SPIKE/0700	GRAVELLY-SPIKE/1900	
E-609 MAST T2 BOOM MTN	09/26	TODD ALTER	2	GRAVELLY-SPIKE/0700	GRAVELLY-SPIKE/1900	
E-610 MAST T2 BOOM CMT	09/25	JOE ALTER	1	GRAVELLY-SPIKE/0700	GRAVELLY-SPIKE/1900	
E-540 WTS1 PRECISION TOWING	09/28	MICHAEL DANIAUSKUS	1	GRAVELLY-SPIKE/0700	GRAVELLY-SPIKE/1900	
E-262 WTS1 DNN ENTERPRISES	09/27	DAVE PIERCE	1	GRAVELLY-SPIKE/0700	GRAVELLY-SPIKE/1900	
O-1048 FMOD PACIFIC RIDGELINE	10/02	CHRIS PHILLIP	2	GRAVELLY-SPIKE/0700	GRAVELLY-SPIKE/1900	
O-823 TFLD	09/24	ROBERT JAMES (T)	1	GRAVELLY-SPIKE/0700	GRAVELLY-SPIKE/1900	
O-1053 TFLD	10/02	DARREN ICEYES	1	GRAVELLY-SPIKE/0700	GRAVELLY-SPIKE/1900	
O-957 REMS 2	09/27	AUSTIN STOWE	2	GRAVELLY-SPIKE/0700	GRAVELLY-SPIKE/1900	
O-1042 HEQB	10/01	JUAN PALACIOUS	1	GRAVELLY-SPIKE/0700	GRAVELLY-SPIKE/1900	
<b>8. Division/Group Communication Summary</b>						
Function	Channel	RX Frequency N/W	RX Tone/NAC	TX Frequency N/W	TX Tone/NAC	Mode
TACTICAL	7	168.0500	136.5	168.0500	136.5	A
COMMAND	4	172.6750	136.5	163.0375	136.5	A
COMMAND	6	170.0500	136.5	167.0750	136.5	A
<b>9. Prepared By (Resource Unit Leader)</b>			<b>Approved By (Planning Section Chief)</b>		<b>Date</b>	<b>Time</b>
JAMES SILVA			JAKE LIGHTFOOT		09/22/2020	2130

## Division/Group Assignment List (ICS 204 WF)

Controlled Unclassified Information//Basic

<b>1. Incident Name:</b>			<b>3.</b>			
AUGUST COMPLEX			<b>Branch:</b>		<b>Division/Group:</b>	
<b>2. Operational Period:</b> <b>DAY</b>			<b>43</b>		<b>TANGO 2</b>	
Date/Time From: 09/23/2020 0700      WED		Date/Time To: 09/23/2020 1900      WED				
<b>4. Operations Personnel</b>						
<b>OPERATIONS CHIEF</b>		CHAD OLSON, RICH STILES (T)		<b>DEPUTY OPS</b>		
				MARK KOONTZ		
<b>PLANNING OPS</b>		ROD COLLINS, BRIAN BUNN (T)		<b>BRANCH DIRECTOR</b>		
				ROBERT LOPEZ		
<b>DIVISION/GROUP SUPERVISOR</b>		CORY HENRY FRANK ALVES (T)		<b>ABOD</b>		
				ERIC TALPIN		
<b>5. Resources Assigned this Period</b>						
Strike Team / Task Force / Resource Designator		LWD	Leader	Number Persons	Drop Off PT./Time	Pick Up PT./Time
O-1025 HEQB		10/02	ROBERT ISER	1	GRAVELLY-SPIKE/0700	GRAVELLY-SPIKE/1900
O-731 HEQB (T)		09/23	STEPHEN KAUFMAN	1	GRAVELLY-SPIKE/0700	GRAVELLY-SPIKE/1900
O-730 HEQB (T)		09/29	BENJAMIN SUSOR	1	GRAVELLY-SPIKE/0700	GRAVELLY-SPIKE/1900
O-911 SOFR (T)		09/26	MATTHEW CHRISTENSEN	1	GRAVELLY-SPIKE/0700	GRAVELLY-SPIKE/1900
US ARMY STLM (BRAVO)		09/24	CPT WATTS / 1SGT KING	2	GRAVELLY-SPIKE/0700	GRAVELLY-SPIKE/1900
O-686 US ARMY SOFR		09/24	JEROME DRAZINSKI	1	GRAVELLY-SPIKE/0700	GRAVELLY-SPIKE/1900
US ARMY STLM (BRAVO)		09/24	WIEDOW	1	GRAVELLY-SPIKE/0700	GRAVELLY-SPIKE/1900
US ARMY STLM (BRAVO)		09/24	ROOPER	1	GRAVELLY-SPIKE/0700	GRAVELLY-SPIKE/1900
US ARMY STLM (ALPHA)		09/24	PLATT / PIEHL (T)	2	GRAVELLY-SPIKE/0700	GRAVELLY-SPIKE/1900
US ARMY STLM (ALPHA)		09/24	CPT DAVID/ 1SG CARRASQUILLO	2	GRAVELLY-SPIKE/0700	GRAVELLY-SPIKE/1900
US ARMY RUGGED 1 (ALPHA)		09/24	BIEDSCHEID / BYBEE / 1LT CATALANO / SFC / DEROSA	24	GRAVELLY-SPIKE/0700	GRAVELLY-SPIKE/1900
US ARMY RUGGED 2 (ALPHA)		09/24	BROWN / NEEDHAM / 1LT COLLINS / SFC MILES	24	GRAVELLY-SPIKE/0700	GRAVELLY-SPIKE/1900
US ARMY RUGGED 3 (ALPHA)		09/24	AHRENSBRAK / PACE / 1LT FROMM / SFC ZIZELMAN	24	GRAVELLY-SPIKE/0700	GRAVELLY-SPIKE/1900
REAF			MATT NOURMOHAMADIAN	1	GRAVELLY-SPIKE/0700	GRAVELLY-SPIKE/1900
<b>6. Control Operations/Work Assignments:</b>						
Complete dozer line from Division R break to the west towards sunset gap to meet up with Cal Fire dozer line north of the Deschiell Subdivision.						
Prep dozer line for future burning opportunities.						
<b>8. Division/Group Communication Summary</b>						
Function	Channel	RX Frequency N/W	RX Tone/NAC	TX Frequency N/W	TX Tone/NAC	Mode
TACTICAL	7	168.0500	136.5	168.0500	136.5	A
COMMAND	4	172.6750	136.5	163.0375	136.5	A
COMMAND	6	170.0500	136.5	167.0750	136.5	A
<b>9. Prepared By (Resource Unit Leader)</b>			<b>Approved By (Planning Section Chief)</b>		<b>Date</b>	<b>Time</b>
JAMES SILVA			JAKE LIGHTFOOT		09/22/2020	2130



**Division/Group Assignment List (ICS 204 WF)**  
Controlled Unclassified Information//Basic

<b>1. Incident Name:</b>				<b>3.</b>			
AUGUST COMPLEX				<b>Branch:</b>		<b>Division/Group:</b>	
<b>2. Operational Period:</b> DAY				43		TANGO 2	
Date/Time From: 09/23/2020 0700 WED		Date/Time To: 09/23/2020 1900 WED					
<b>4. Operations Personnel</b>							
<b>OPERATIONS CHIEF</b>		CHAD OLSON, RICH STILES (T)		<b>DEPUTY OPS</b>		MARK KOONTZ	
<b>PLANNING OPS</b>		ROD COLLINS, BRIAN BUNN (T)		<b>BRANCH DIRECTOR</b>		ROBERT LOPEZ	
<b>DIVISION/GROUP SUPERVISOR</b>		CORY HENRY FRANK ALVES (T)		<b>ABOD</b>		ERIC TALPIN	
<b>6. Control Operations/Work Assignments:</b>							
Coordinate with Rice Structure Group for preparation of structures in the the Deschiell Subdivision.							
<b>7. Special Instructions:</b>							
Follow CDC guidance and established local, state, and national guidance to ensure a healthy work environment. Adhere to the "module of one" concept to reduce physical exposure and transmission of COVID 19. Resources with symptoms notify COVID coordinator at 916-591-9006.							
<b>8. Division/Group Communication Summary</b>							
<b>Function</b>	<b>Channel</b>	<b>RX Frequency N/W</b>	<b>RX Tone/NAC</b>	<b>TX Frequency N/W</b>	<b>TX Tone/NAC</b>	<b>Mode</b>	
TACTICAL	7	168.0500	136.5	168.0500	136.5	A	
COMMAND	4	172.6750	136.5	163.0375	136.5	A	
COMMAND	6	170.0500	136.5	167.0750	136.5	A	
<b>9. Prepared By (Resource Unit Leader)</b>			<b>Approved By (Planning Section Chief)</b>			<b>Date</b>	<b>Time</b>
JAMES SILVA			JAKE LIGHTFOOT			09/22/2020	2130

## Division/Group Assignment List (ICS 204 WF)

Controlled Unclassified Information//Basic

<b>1. Incident Name:</b>			<b>3.</b>			
AUGUST COMPLEX			<b>Branch:</b>		<b>Division/Group:</b>	
<b>2. Operational Period:</b> <b>DAY</b>			<b>43</b>		<b>NIGHT GRP</b>	
Date/Time From: 09/23/2020 0700                      WED		Date/Time To: 09/23/2020 1900                      WED				
<b>4. Operations Personnel</b>						
<b>OPERATIONS CHIEF</b>		CHAD OLSON, RICH STILES (T)		<b>DEPUTY OPS</b> MARK KOONTZ		
<b>PLANNING OPS</b>		ROD COLLINS, BRIAN BUNN (T)		<b>BRANCH DIRECTOR</b> ROBERT LOPEZ		
<b>DIVISION/GROUP SUPERVISOR</b>		STEVE CAMERON		<b>ABOD</b> ERIC TALPIN		
<b>5. Resources Assigned this Period</b>						
Strike Team / Task Force / Resource Designator		LWD	Leader	Number Persons	Drop Off PT./Time	Pick Up PT./Time
E-490 ENG3 INTERIOR - 3-7 (SD-GPC)		09/27	JOHN TUCKER	3	GRAVELLY-SPIKE/0700	GRAVELLY-SPIKE/1900
E-704 ENG3 LASSEN 384		10/05	FREDRICK CUTHILL	4	GRAVELLY-SPIKE/0700	GRAVELLY-SPIKE/1900
E-24 ENG3 WILDFIRE SUPPORT 316		09/24	JONALD LOWE	3	GRAVELLY-SPIKE/0700	GRAVELLY-SPIKE/1900
E-513 ENG4- PVT- J3 - ENG 30		09/29	KEIR MURPHY	3	GRAVELLY-SPIKE/0700	GRAVELLY-SPIKE/1900
E-31 ENG5 ALASKA WILDLAND FIRE 51		09/24	BRIAN TERRY	3	GRAVELLY-SPIKE/0700	GRAVELLY-SPIKE/1900
E-510 ENG6 DULUTH INTL E-713		09/23	CLAYTON RAKES	4	GRAVELLY-SPIKE/0700	GRAVELLY-SPIKE/1900
E-531 ENG6 BISHOP ENTERPRISES		10/01	EUGENE WEASEL	3	GRAVELLY-SPIKE/0700	GRAVELLY-SPIKE/1900
E-515 ENG6 TWIN LAKES 56		09/25	TRISHA ST PIERRE	2	GRAVELLY-SPIKE/0700	GRAVELLY-SPIKE/1900
E-198 ENG6 WILDLAND FIRE SVC		09/26	JEREMIAH HATCHER	3	GRAVELLY-SPIKE/0700	GRAVELLY-SPIKE/1900
E-194 ENG6 STARKCORP 1		09/25	CODY SHIPP	3	GRAVELLY-SPIKE/0700	GRAVELLY-SPIKE/1900
E-116 WTS2 ROCKY POINT 101		09/29	SHAWN SHELEBY	1	GRAVELLY-SPIKE/0700	GRAVELLY-SPIKE/1900
<b>6. Control Operations/Work Assignments:</b>						
Point protection in the Pillsbury Ranch and Rice Fork summer home area. Build control lines around inholdings in the area.						
Coordinate with Day Operations and Branch Director for assignments.						
<b>7. Special Instructions:</b>						
Follow CDC guidance and established local, state, and national guidance to ensure a healthy work environment. Adhere to the "module of one" concept to reduce physical exposure and transmission of COVID 19. Resources with symptoms notify COVID coordinator at 916-591-9006.						
<b>8. Division/Group Communication Summary</b>						
Function	Channel	RX Frequency N/W	RX Tone/NAC	TX Frequency N/W	TX Tone/NAC	Mode
TACTICAL	8	168.2000	136.5	168.2000	136.5	A
COMMAND	1	170.0000	136.5	166.6750	136.5	A
COMMAND	4	172.6750	136.5	163.0375	136.5	A
<b>9. Prepared By (Resource Unit Leader)</b>			<b>Approved By (Planning Section Chief)</b>		<b>Date</b>	<b>Time</b>
JAMES SILVA			JAKE LIGHTFOOT		09/22/2020	2130

**Division/Group Assignment List (ICS 204 WF)**  
 Controlled Unclassified Information//Basic

<b>1. Incident Name:</b>		<b>3.</b>				
AUGUST COMPLEX		<b>Branch:</b>		<b>Division/Group:</b>		
<b>2. Operational Period:</b>		<b>43</b>		<b>FIRING GRP</b>		
<b>DAY</b>						
Date/Time From: 09/23/2020 0700      WED		Date/Time To: 09/23/2020 1900      WED				
<b>4. Operations Personnel</b>						
<b>OPERATIONS CHIEF</b>	CHAD OLSEN RICHARD STILES (T)	<b>DEPUTY OPS</b>		MARK KOONTZ		
<b>PLANNING OPS</b>	ROD COLLINS BRIAN BUNN (T)	<b>BRANCH DIRECTOR</b>		ROBERT LOPEZ		
<b>DIVISION/GROUP SUPERVISOR</b>	SPENCER JOHNSTON	<b>AOBD</b>		ERIC TALPIN		
<b>5. Resources Assigned this Period</b>						
Strike Team / Task Force / Resource Designator	LWD	Leader	Number Persons	Drop Off PT./Time	Pick Up PT./Time	
C-150 T2IA MODOC CREW	09/30	WILLIAM ALMAND	20	GRAVELLY- SPIKE/0700	GRAVELLY- SPIKE/1900	
<b>6. Control Operations/Work Assignments:</b>						
Utilize established control features in and around the Pillsbury Lake to secure private in-holdings.						
<b>7. Special Instructions:</b>						
Follow CDC guidance and established local, state, and national guidance to ensure a healthy work environment. Adhere to the "module of one" concept to reduce physical exposure and transmission of COVID 19. Resources with symptoms notify COVID coordinator at 916-591-9006.						
<b>8. Division/Group Communication Summary</b>						
Function	Channel	RX Frequency N/W	RX Tone/NAC	TX Frequency N/W	TX Tone/NAC	Mode
TACTICAL	9	168.6000	136.5	168.6000	136.5	A
<b>9. Prepared By (Resource Unit Leader)</b>		<b>Approved By (Planning Section Chief)</b>		<b>Date</b>	<b>Time</b>	
JAMES SILVA		JAKE LIGHTFOOT		09/22/2020	2130	

**Division/Group Assignment List (ICS 204 WF)**  
Controlled Unclassified Information//Basic

<b>1. Incident Name:</b>				<b>3.</b>		
AUGUST COMPLEX				<b>Branch:</b>  <b>STRUCT. PROT.</b>	<b>Division/Group:</b>  <b>PILLSBURY STRUCT GRP</b>	
<b>2. Operational Period: DAY</b>						
Date/Time From: 09/23/2020 0700      WED		Date/Time To: 09/23/2020 1900      WED				
<b>4. Operations Personnel</b>						
<b>OPERATIONS CHIEF</b>	CHAD OLSON RICH STILES (T)			<b>DEPUTY OPS</b>	MARK KOONTZ	
<b>PLANNING OPS</b>	ROD COLLINS, BRIAN BUNN (T)			<b>BRANCH DIRECTOR</b>	PAUL HUTTA	
<b>DIVISION/GROUP SUPERVISOR</b>	PILA MALOLO MICHAEL DOHERTY (T)			<b>AOBD</b>	ERIC TALPIN	
<b>5. Resources Assigned this Period</b>						
Strike Team / Task Force / Resource Designator	LWD	Leader	Number Persons	Drop Off PT./Time	Pick Up PT./Time	
E-707 ENG3 LASSEN #315	10/05	ANDREW CONNOLLY	5	GRAVELLY-SPIKE/0700	GRAVELLY-SPIKE/1900	
E-199 ENG6 WILDLAND FIRE	10/05	DAVID HOGREFG	3	GRAVELLY-SPIKE/0700	GRAVELLY-SPIKE/1900	
E-562 DOZ2 ROWBERRY	09/28	CALEB ROWBERRY	2	GRAVELLY-SPIKE/0700	GRAVELLY-SPIKE/1900	
E-428 MAST BRAD INGRAM CONSTRUCTION	09/25	MARK ESCALARA	2	GRAVELLY-SPIKE/0700	GRAVELLY-SPIKE/1900	
E-455 SKG1 CHAPMAN	09/23	MIKE CHAPMAN	2	GRAVELLY-SPIKE/0700	GRAVELLY-SPIKE/1900	
E-112 WTS2 DBA DUSTBUSTERS	09/30	MICHAEL EDWARDS	1	GRAVELLY-SPIKE/0700	GRAVELLY-SPIKE/1900	
E-476 WTS2 SANTAQUIN VFD - WT141	10/01	SCOTT BERNARDS	1	GRAVELLY-SPIKE/0700	GRAVELLY-SPIKE/1900	
E-508 WTS2 DUST BUSTER	09/27	JASON HOBBY	1	GRAVELLY-SPIKE/0700	GRAVELLY-SPIKE/1900	
O-1047 FMOD CHARLIE FALLERS - ST	10/02	TACOMA MANUEL	2	GRAVELLY-SPIKE/0700	GRAVELLY-SPIKE/0700	
O-503 FMOD SWEDBERG	09/24	JUSTIN FOSS	2	GRAVELLY-SPIKE/0700	GRAVELLY-SPIKE/1900	
O-824 TFLD	09/24	MIKE BLAKE	1	GRAVELLY-SPIKE/0700	GRAVELLY-SPIKE/1900	
O-752 TFLD(T)	09/29	JEFFREY CORSER	1	GRAVELLY-SPIKE/0700	GRAVELLY-SPIKE/1900	
O-626 EMTF	09/23	BRETT ROBERTS	1	GRAVELLY-SPIKE/0700	GRAVELLY-SPIKE/1900	
O-232 SOFR	09/29	JEFFREY KERR	1	GRAVELLY-SPIKE/0700	GRAVELLY-SPIKE/1900	
US ARMY BILLINGS IA ALPHA 2 (CHARLIE)	09/24	STARK	4	GRAVELLY-SPIKE/0700	GRAVELLY-SPIKE/1900	
US ARMY BILLINGS IA BRAVO 2 (CHARLIE)	09/24	ZIMMER	4	GRAVELLY-SPIKE/0700	GRAVELLY-SPIKE/1900	
<b>8. Division/Group Communication Summary</b>						
Function	Channel	RX Frequency N/W	RX Tone/NAC	TX Frequency N/W	TX Tone/NAC	Mode
COMMAND	1	170.0000	136.5	166.6750	136.5	A
COMMAND	6	170.0500	136.5	167.0750	136.5	A
TACTICAL	11	166.7250	136.5	166.7250	136.5	A
COMMAND	4	172.6750	136.5	163.0375	136.5	A
<b>9. Prepared By (Resource Unit Leader)</b>			<b>Approved By (Planning Section Chief)</b>		<b>Date</b>	<b>Time</b>
JAMES SILVA			JAKE LIGHTFOOT		09/22/2020	2130

**Division/Group Assignment List (ICS 204 WF)**  
**Controlled Unclassified Information//Basic**

<b>1. Incident Name:</b>				<b>3.</b>			
AUGUST COMPLEX				<b>Branch:</b>		<b>Division/Group:</b>	
<b>2. Operational Period:</b> DAY				<b>STRUCT. PROT.</b>		<b>PILLSBURY STRUCT GRP</b>	
Date/Time From: 09/23/2020 0700 WED		Date/Time To: 09/23/2020 1900 WED					
<b>4. Operations Personnel</b>							
<b>OPERATIONS CHIEF</b>		CHAD OLSON RICH STILES (T)		<b>DEPUTY OPS</b>		MARK KOONTZ	
<b>PLANNING OPS</b>		ROD COLLINS, BRIAN BUNN (T)		<b>BRANCH DIRECTOR</b>		PAUL HUTTA	
<b>DIVISION/GROUP SUPERVISOR</b>		PILA MALOLO MICHAEL DOHERTY (T)		<b>AOBD</b>		ERIC TALPIN	
<b>5. Resources Assigned this Period</b>							
Strike Team / Task Force / Resource Designator		LWD	Leader	Number Persons	Drop Off PT./Time	Pick Up PT./Time	
US ARMY STLM (CHARLIE)		09/24	PALIN / HANCOCK	1	GRAVELLY-SPIKE/0700	GRAVELLY-SPIKE/1900	
US ARMY STML (CHARLIE)		09/24	CPT KETCHUM	1	GRAVELLY-SPIKE/0700	GRAVELLY-SPIKE/1900	
US ARMY RUGGED 7 (CHARLIE)		09/24	MULLER / MCCULLOUGH / 1LT HABIGER	23	STONYFORD/0700	GRAVELLY-SPIKE/1900	
US ARMY RUGGED 8 (CHARLIE)		09/24	JOHNSON / 1LT STACEY	22	GRAVELLY-SPIKE/0700	GRAVELLY-SPIKE/1900	
US ARMY RUGGED 9 (CHARLIE)		09/24	HOUSE / KUPFER / 2LT CAMPOS	23	GRAVELLY-SPIKE/0700	GRAVELLY-SPIKE/1900	
US ARMY RUGGED 10 (CHARLIE)		09/24	WILTSE / WEAVER / 1LT STEARUS	23	GRAVELLY-SPIKE/0700	GRAVELLY-SPIKE/1900	
US ARMY BILLINGS IA ALPHA I (BRAVO)		09/24	TANGEN	1	GRAVELLY-SPIKE/0700	GRAVELLY-SPIKE/1900	
US ARMY RUGGED 4 (BRAVO)		09/24	CORDELL / HAHN / 2LT COOPER	23	GRAVELLY-SPIKE/0700	GRAVELLY-SPIKE/1900	
US ARMY RUGGED 5 (BRAVO)		09/24	LUCER / CROWELL / 2LT PENNINGER	23	GRAVELLY-SPIKE/0700	GRAVELLY-SPIKE/1900	
SWING E-387 ITAC3 TASKFORCE TF8		09/30	WILLIAM MARCK	23	GRAVELLY-SPIKE/0800	GRAVELLY-SPIKE/0030	
SWING E-489 ENG3 BIG RED ALTERGOTT 31		09/26	ADAM ALTERGOTT	3	GRAVELLY-SPIKE/0800	GRAVELLY-SPIKE/0030	
SWING E-511 ENG6 ROCKY MOUNTAIN FIRE		09/25	TRAVIS SCOTT	3	GRAVELLY-SPIKE/0800	GRAVELLY-SPIKE/0030	
SWING E-532 ENG6 TGF FORESTRY		10/03	CURT TIMMER	3	GRAVELLY-SPIKE/0700	GRAVELLY-SPIKE/1900	
SWING E-185 ENG6 WINDSWEPT FIRE 604		09/24	CHRIS SCHIVFELDEIN	3	GRAVELLY-SPIKE/0800	GRAVELLY-SPIKE/0030	
SWING E-197 ENG6 BIRD DOG FIRE		09/28	DAVID CAVANAUGH	3	GRAVELLY-SPIKE/0800	GRAVELLY-SPIKE/0030	
SWING E-572 ENG6 BIG STATE		09/29	PAUL VALENTINE	3	GRAVELLY-SPIKE/0800	GRAVELLY-SPIKE/0030	
<b>8. Division/Group Communication Summary</b>							
Function	Channel	RX Frequency N/W	RX Tone/NAC	TX Frequency N/W	TX Tone/NAC	Mode	
COMMAND	1	170.0000	136.5	166.6750	136.5	A	
COMMAND	6	170.0500	136.5	167.0750	136.5	A	
TACTICAL	11	166.7250	136.5	166.7250	136.5	A	
COMMAND	4	172.6750	136.5	163.0375	136.5	A	
<b>9. Prepared By (Resource Unit Leader)</b>			<b>Approved By (Planning Section Chief)</b>			<b>Date</b>	<b>Time</b>
JAMES SILVA			JAKE LIGHTFOOT			09/22/2020	2130

**Division/Group Assignment List (ICS 204 WF)**  
Controlled Unclassified Information//Basic

<b>1. Incident Name:</b>			<b>3.</b>			
AUGUST COMPLEX			<b>Branch:</b>		<b>Division/Group:</b>	
<b>2. Operational Period:</b> DAY			<b>STRUCT. PROT.</b>		<b>PILLSBURY STRUCT GRP</b>	
Date/Time From: 09/23/2020 0700	WED	Date/Time To: 09/23/2020 1900				WED
<b>4. Operations Personnel</b>						
<b>OPERATIONS CHIEF</b>		CHAD OLSON RICH STILES (T)		<b>DEPUTY OPS</b> MARK KOONTZ		
<b>PLANNING OPS</b>		ROD COLLINS, BRIAN BUNN (T)		<b>BRANCH DIRECTOR</b> PAUL HUTTA		
<b>DIVISION/GROUP SUPERVISOR</b>		PILA MALOLO MICHAEL DOHERTY (T)		<b>AOBD</b> ERIC TALPIN		
<b>5. Resources Assigned this Period</b>						
Strike Team / Task Force / Resource Designator		LWD	Leader	Number Persons	Drop Off PT./Time	Pick Up PT./Time
SWING O-823 TFLD (T)		09/24	ROBERT JAMES	1	GRAVELLY-SPIKE/0800	GRAVELLY-SPIKE/0030
SWING O-925 SOF2		09/27	JACK MUNCY	1	GRAVELLY-SPIKE/0800	GRAVELLY-SPIKE/0030
SWING O-329 EMPF		09/23	KEVIN KLYTTA	1	GRAVELLY-SPIKE/0800	GRAVELLY-SPIKE/0030
<b>6. Control Operations/Work Assignments:</b>						
Continue to prep around structures and sub-divisions identified in the Pillsbury Lake area. Continue to identify and GPS primary structures and outbuildings.						
<b>7. Special Instructions:</b>						
Use caution around snags and flag as needed for safety. Use caution when driving on roadways and on the fireline. Backhaul excessive equipment and trash. READS will call DIVS when entering.						
SOFR's will maintain contact with resources as they transition along the control lines between DIV O and DIV R.						
Follow CDC guidance and established local, state, and national guidance to ensure a healthy work environment. Adhere to the "module of one" concept to reduce physical exposure and transmission of COVID 19. Resources with symptoms notify COVID coordinator at 916-591-9006.						
<b>8. Division/Group Communication Summary</b>						
Function	Channel	RX Frequency N/W	RX Tone/NAC	TX Frequency N/W	TX Tone/NAC	Mode
COMMAND	1	170.0000	136.5	166.6750	136.5	A
COMMAND	6	170.0500	136.5	167.0750	136.5	A
TACTICAL	11	166.7250	136.5	166.7250	136.5	A
COMMAND	4	172.6750	136.5	163.0375	136.5	A
<b>9. Prepared By (Resource Unit Leader)</b>			<b>Approved By (Planning Section Chief)</b>		<b>Date</b>	<b>Time</b>
JAMES SILVA			JAKE LIGHTFOOT		09/22/2020	2130

**Division/Group Assignment List (ICS 204 WF)**  
**Controlled Unclassified Information//Basic**

<b>1. Incident Name:</b>			<b>3.</b>			
AUGUST COMPLEX			<b>Branch:</b>		<b>Division/Group:</b>	
<b>2. Operational Period:</b> DAY			<b>STRUCT. PROT.</b>		<b>RICE STRUCT GRP</b>	
Date/Time From: 09/23/2020 0700 WED		Date/Time To: 09/23/2020 1900 WED				
<b>4. Operations Personnel</b>						
<b>OPERATIONS CHIEF</b>		CHAD OLSON, RICH STILES (T)		<b>DEPUTY OPS</b>		MARK KOONTZ
<b>PLANNING OPS</b>		ROD COLLINS, BRIAN BUNN (T)		<b>BRANCH DIRECTOR</b>		PAUL HUTTA
<b>DIVISION/GROUP SUPERVISOR</b>		JEFF SANOCKI, SHEENA WATERS (T)		<b>ABOD</b>		ERIC TALPIN
<b>5. Resources Assigned this Period</b>						
Strike Team / Task Force / Resource Designator		LWD	Leader	Number Persons	Drop Off PT./Time	Pick Up PT./Time
E-187 ENG3 OUTBACK FIREFIGHTING		09/24	LANCE WOLLEBOEK	3	GRAVELLY-SPIKE/0700	GRAVELLY SPIKE /2100
E-634 ENG3 WEST METRO BRUSH		10/01	SHAUN BOWMAN	4	GRAVELLY-SPIKE/0700	GRAVELLY SPIKE /2100
E-622 ENG6 - FL FNF 642		10/05	CRAIG HOISINGTON	3	GRAVELLY-SPIKE/0700	GRAVELLY SPIKE /2100
E-616 ENG6 BALDWIN FORESTRY		09/28	LORAN ANDERSON	3	GRAVELLY-SPIKE/0700	GRAVELLY SPIKE /2100
O-232 SOFR		09/29	JEFFREY N KERR	1	GRAVELLY-SPIKE/0700	GRAVELLY SPIKE /2100
E-613 AMBO MEDIC 5		09/25	TIM MCNAIR	2	GRAVELLY-SPIKE/0700	GRAVELLY SPIKE /2100
<b>6. Control Operations/Work Assignments:</b>						
Continue to prep around structures and sub-divisions identified in the Rice sub-division area. Continue to identify and GPS primary structures and outbuildings.						
<b>7. Special Instructions:</b>						
Follow CDC guidance and established local, state, and national guidance to ensure a healthy work environment. Adhere to the "module of one" concept to reduce physical exposure and transmission of COVID 19. Resources with symptoms notify COVID coordinator at 916-591-9006.						
<b>8. Division/Group Communication Summary</b>						
Function	Channel	RX Frequency N/W	RX Tone/NAC	TX Frequency N/W	TX Tone/NAC	Mode
TACTICAL	10	168.2500	136.5	168.2500	136.5	A
COMMAND	6	170.0500	136.5	167.0750	136.5	A
COMMAND	4	172.6750	136.5	163.0375	136.5	A
<b>9. Prepared By (Resource Unit Leader)</b>			<b>Approved By (Planning Section Chief)</b>		<b>Date</b>	<b>Time</b>
JAMES SILVA			JAKE LIGHTFOOT		09/22/2020	2130

**Division/Group Assignment List (ICS 204 WF)**  
**Controlled Unclassified Information//Basic**

<b>1. Incident Name:</b>			<b>3.</b>			
AUGUST COMPLEX			<b>Branch:</b>		<b>Division/Group:</b>  <b>STONYFORD STAGING</b>	
<b>2. Operational Period: DAY</b>						
Date/Time From: 09/23/2020 0700 WED		Date/Time To: 09/23/2020 1900 WED				
<b>4. Operations Personnel</b>						
<b>OPERATIONS CHIEF</b>		CHAD OLSON, RICH STILES (T)		<b>DEPUTY OPS</b>		MARK KOONTZ
<b>PLANNING OPS</b>		ROD COLLINS, BRIAN BUNN (T)		<b>DIVISION/GROUP SUPERVISOR</b>		PLANNING OPS
<b>ABOD</b>		ERIC TALPIN				
<b>5. Resources Assigned this Period</b>						
Strike Team / Task Force / Resource Designator		LWD	Leader	Number Persons	Drop Off PT./Time	Pick Up PT./Time
<b>6. Control Operations/Work Assignments:</b>						
<b>7. Special Instructions:</b>						
<p>Monitor Command Channel</p> <p>Follow CDC guidance and established local, state, and national guidance to ensure a healthy work environment. Adhere to the "module of one" concept to reduce physical exposure and transmission of COVID 19. Resources with symptoms notify COVID coordinator at 916-591-9006.</p>						
<b>8. Division/Group Communication Summary</b>						
Function	Channel	RX Frequency N/W	RX Tone/NAC	TX Frequency N/W	TX Tone/NAC	Mode
TACTICAL	7	168.0500	136.5	168.0500	136.5	A
COMMAND	1	170.0000	136.5	166.6750	136.5	A
<b>9. Prepared By (Resource Unit Leader)</b>			<b>Approved By (Planning Section Chief)</b>		<b>Date</b>	<b>Time</b>
JAMES SILVA			JAKE LIGHTFOOT		09/22/2020	2130



# AIR OPERATIONS SUMMARY

Prepared by: Eric Taplin

Prepared Date: 09/22/2020

Prepared Time: 1645

<b>1. INCIDENT NAME:</b> August Complex South Zone	<b>2. OPS PERIOD DATE:</b> 09/23/2020	<b>START TIME:</b> 0700	<b>END TIME:</b> 1930	<b>Sunrise:</b> 0657	<b>Sunset Time:</b> 1905	
<b>3. REMARKS:</b> <u>SEE AND AVOID</u> *NOTIFY ATGS/OPS/AIR OPS IMMEDIATELY OF ANY DRONE/UAS'S SEEN IN FIRE AREA * Track all drop locations/number of drops/gallons dropped in Wilderness. All GPS data to be collected in DEGREES, MINUTES, DECIMAL MINUTES format. Avoid Aerial Application of retardant/foam/agent within 300' of waterways, bodies of water, etc. If Retardant/foam/agent is dropped within these areas, immediately notify the AOB and provide the following information: Lat/Long, estimated number of gallons and a map detailing the area. CAUTION: POWERLINES AND SMOKE DIP SITES: No dipping out of Eel River and Black Butte Creek						
<b>4. Medevac:</b> California National Guard 821 NVG Hoist Available 24/7 in Redding  <u>Willits Helibase</u> 39° 27.04'N x 123° 22.30' W 2066'			<b>5. TFR Notam:</b> 0/5337 <a href="http://tfr.faa.gov/tfr2/list.html">http://tfr.faa.gov/tfr2/list.html</a> 4 point polygon Frequency: 124.225 Altitude: 12,000 MSL			
<b>6. PERSONNEL</b>	<b>NAME</b>	<b>PHONE #</b>	<b>7. FREQUENCIES</b>	<b>AM</b>	<b>FM</b>	<b>8. FIXED-WING</b>
AOBD	Eric Taplin	208-634-9425	Air Tactics FW		172.4500	As needed ordered by the ATGS
ASGS (I)	Joe Rogan	208-871-7547	Air/Air TFR	124.225		
ATGS	Rick Thompson	970-209-6989	AIR/AIR ROTOR	133.275		AIR ATTACK: 7MZ HLCO: Will use available Type 3 Helicopter
HLCO	On Order		A/G Tactical A/G Command		172.3500 168.3375	
Willits Helibase	Rex Sundstrom	530-575-0368	DECK  TOLC		163.100  172.1375	LEAD PLANES: As needed ordered by the ATGS SEATS: FireBoss 211, 212, 214 in Redding. As needed ordered by the ATGS SCOOTER: (CL415) 260, 263 in Redding. TANKERS: As needed ordered by the ATGS
			CALCORD CA Air Ambulance		156.0750 Tone Rx/Tx 156.7	Helibase Trailer E - 125 Water Tender E - 106
			North Zone Air Tac		166.950	West Zone FM Air Tac: 173.7375
			North Zone TFR	124.375		West Zone TFR: 132.575
			North Zone Rotor	132.775		West Zone Rotor: 132.575
			North Zone A/G CMD		171.8375	West Zone Air Briefing: 128.4250
			North Zone A/G Tac		170.5625	West Zone A/G: CDF T23 159.4500 Rx/Tx Tone 192.8

**9. HELICOPTERS**

FAA N#	TY	MAKE/ MODEL	BASE	START	READY	REMARKS	FAA N#	TY	MAKE/ MODEL	BASE	START	READY	REMARKS
561AJ	1	CH-47 (A-114)	Willits	0700	0800	Bucket							
804PJ	1	UH-60 (A-227)	Willits	0700	0800	Bucket							
212HP H-514	2	Bell 212HP (A-193)	Willits	0700	0800	Bucket/Cargo/ Crew							
407WF	3	Bell 407 (A-171)	Willits	0700	0800	HELCO/Recon/ Crew/Bucket/ PSD							

ICS-220



## **Radio Cloning Procedures:**

- At operational briefings, one representative from each module should be cloned by Communications Unit, then subsequently share the radio code plug/program with the module.
- Cloning procedure:
  1. COMT puts on gloves and face covering.
  2. COMT clones radio (COMT is only person that handles cloning cable and cloner).
  3. COMT wipes down customer radio with appropriate disinfecting solution or wipes and returns the radio.
  4. COMT wipes down cloner, cable, and gloves.
  5. Move on to the next radio.
- Module representatives, single resources, and cooperators will maintain social distancing as they line up for service.
- As practical, cloning areas should be set up outdoors in well-ventilated areas with enough space for social distancing.

INCIDENT RADIO COMMUNICATIONS PLAN I-205				1. INCIDENT NAME		2. DATE/TIME PREPARED		3. OPERATIONAL PERIOD DATE/TIME			
				August Complex South Zone		09/22/2020 1600		09/23/2020 0700 to 09/24/2020 0700			
4. BASIC RADIO CHANNEL UTILIZATION											
Ch #	Function	Channel Name	Assignment	RX Freq	NW	RX Tone/NAC	TX Freq	NW	TX Tone/NAC	Mode Analog (A) Digital (D) Mixed (M)	Remarks
1	COMMAND	CMD-1		170.0000	N	136.5	166.6750	N	136.5	A	ST. JOHN MTN
2	COMMAND	CMD-2		170.4125	N	136.5	165.9625	N	136.5	A	ALDER SPRINGS
3	COMMAND	CMD-3		170.6875	N	136.5	166.5750	N	136.5	A	ROUND MTN
4	COMMAND	CMD-4		172.6750	N	136.5	163.0375	N	136.5	A	GOAT MOUNTAIN
5	COMMAND	CMD-5		173.7500	N	136.5	163.8250	N	136.5	A	TOMHEAD
6	COMMAND	CMD-6		170.0500	N	136.5	167.0750	N	136.5	A	BIG SIGNAL PEAK
7	TACTICAL	TAC-1		168.0500	N	136.5	168.0500	N	136.5	A	DIV T2/STAGING
8	TACTICAL	TAC-2		168.2000	N	136.5	168.2000	N	136.5	A	DIV O2/NIGHTS
9	TACTICAL	TAC-3		168.6000	N	136.5	168.6000	N	136.5	A	DIV D2/F2/FIRING
10	TACTICAL	TAC-4		168.2500	N	136.5	168.2500	N	136.5	A	DIV J2/RICE STRUCTURE
11	TACTICAL	TAC-5		166.7250	N	136.5	166.7250	N	136.5	A	DIV N2/PILLSBURY STRUCTURE
12	TACTICAL	TAC-6		166.7750	N	136.5	166.7750	N	136.5	A	DIV R2
13	A/G	A/G CMD	AIR COMMAND	168.3375	N		168.3375	N		A	AIR-TO-GROUND COMMAND
14	A/G	A/G TAC	AIR TACTICAL	172.3500	N		172.3500	N		A	AIR-TO-GROUND TACTICAL
15	MEDEVAC A/G	CALCORD	MEDICAL	156.0750	N	156.7	156.0750	N	156.7	A	AIR-TO-GROUND MEDICAL
16	AIRGUARD	AIRGUARD	EMERGENCY	168.6250	N		168.6250	N	110.9	A	EMERGENCY ONLY
5. Special Instructions: Use Human Repeaters As Necessary											
August Complex (South Zone) Communications (925) 817-9846											
6. I-205 Prepared By: Communications Unit Leader				Name:				Signature: 			
				Scott Harness COMIL							

## Finance Message

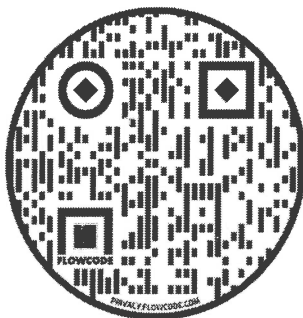
**ALL Resources** – if you have not already done so, please submit all the required paperwork to finance (contracts, casual hire forms, cooperator agreements, etc.

### TO SUBMIT TIME:

- Be sure to get your hard copies to the appropriate individual after morning briefing.
- Hard copies are preferred but you may also send digital copies to [2020.AugustComplex.finance@firenet.gov](mailto:2020.AugustComplex.finance@firenet.gov).
- Ensure your resource order number is on your CTR and shift tickets.
- Single resources – please put only one person on each CTR.
- Please remember to put the **reason for hazard pay** and **compensable meal** justifications in the Remarks block on the CTR or shift ticket.
- Please submit time at least every other day.

**Please Click the QR code below for the following fillable Finance forms:**

**CTRs/Shift Tickets and Comps/Claim**



If submitting a digital copy “pdf” is preferred. When sending “jpg” please use high resolution. When completing claims form be sure to include your Resource Order #, your home unit address, your contact number and email address as well as pictures of the damage/damaged item.

### Finance Contact Information

Finance Chief:	Carol Bass	775-296-2402
Finance Chief Trainee	Sharon Holmes	318-730-5813
Procurement Unit Leader	Dan Myers	970-485-0139
Comp Claims	Judy May	775-340-0224



## CHECK-IN PROCEDURES

**Virtual Check-In:** Please complete online check-in with your smart phone.

Use your Resource Order and Incident Qualification Card to complete the check-in information accurately. For CREWS, only the leader must check in online. For all other resources with multiple people per resource order number, all people should complete check-in.

**1. SCAN THE QR CODE and COMPLETE the form in its entirety.**



**2. EMAIL RESOURCE ORDER AND MANIFEST TO:**



or [2020.augustcomplex.resources@firenet.gov](mailto:2020.augustcomplex.resources@firenet.gov)

If you do not have the capability or information needed to complete online check-in on your smart phone, please come to Check-In Trailer and knock on the door and someone will come outside to assist you with check-in. Thank You!

**Base Camp Check-in Trailer Hours 0600 – 2000**

**Willows ICP Check-In Hours 0700-2100**

# PAPERLESS DEMOBILIZATION CHECKOUT PROCESS

Questions??? Contact Lori Price @ DEMOB 925-588-6089

- 1.) Visit the DMOB Unit Last for final checkout.
- 2.) At each of the following units, take a picture of the Unit Lead's signature after you have been cleared by them for DEMOB.

<b>Supply</b>	<b>(856-430-5621)</b>
<b>Communications</b>	<b>(925-817-9846)</b>
<b>Ground Support</b>	<b>(928-679-0611)</b>

- 3.) Once cleared from all 3 units present your pictures to the DEMOB unit leader for final approval and checkout.

- If you do not have all required signatures you will not be cleared from ICP.
- Those without the ability to take a picture on their phones should coordinate with their supervisor.

## CREW SWAP???

Click the QR code below  
to complete e-Form



**24 hours prior to GROUND travel  
and 48 hours prior to AIR travel...**

**SECTION SUPERVISORS will complete  
either paper or fillable electronic Gen  
Msg (213) containing the following  
info to [lorie\\_price@firenet.gov](mailto:lorie_price@firenet.gov)**

- Release Date and Time
- ETD and ETA in Pacific ST
- Mode of Transport: (Air, AOV, POV)
- Name on Driver's License
- Date of Birth
- 3 letter Jetport Identifier
- Need for transport to airport?
- Preferred time of day to travel

# DMOB LIST

August Complex CA-MNF-000753

## 9/23/2020

### EQUIPMENT

E-236	0800	PU	RICHARD LANDRUMS
E-620	0800	ENG6	HDD1606
E-111	0800	WTS2	WATER TENDER SUP
E-572	0830	ENG6	BIG STATE
E-12	0830	ENG3	CLEARWATER 62
E-258	0830	ENG6	ROCKY POINT 118
E-583	0900	DOZ2	BILLY WYCOFF
E-615	0900	ENG6	ANF-611
E-553	0900	STK	DIAMOND FIRE

### OVERHEAD

O-487	0800	SEC1	EMMENS, WILLIAM
O-232	0800	SOFR	KERR, JEFFREY
O-801	0830	DIVS	JANISSE, MICHAEL
O-432	0830	SPUL	MORRIS, RYAN

## 9/24/2020

### EQUIPMENT

E-510	0800	ENG6	MINNESOTA DNR
E-48	0830	DOZ2	WYCOFF
E-555	0830	TRLR	EXPEDITORS BY LINDALE
E-174	0830	DOZ2	KIT CONTRACTING

### OVERHEAD

O-731	0800	HEQB	KAUFMAN, STEPHEN
O-343	0800	PIO2	MOORE, SANDRA
O-722	0800	DIVS	MCKEAN, ADAM
O-317	0830	THSP	CUSHMAN, JASON
O-757	0830	SEC1	MITCHELL, JAMIE
O-329	0830	EMPF	KLYTTA, KEVIN
O-724	0900	PIO2	KURILLA, ROBERT
O-824	0900	TFLD	BLAKE, MICHAEL

## 9/25/2020

### EQUIPMENT

E-195	0800	ENG6	DB JET
E-573	0800	WTS2	FRANKLIN-OWEN
E-567	0800	SKG1	SOFT TRACK ATTACK
E-595	0830	DOZ2	4X02757
E-594	0830	DOZ2	DAVID J PERRY
E-31	0830	ENG5	ALASKA WILDLAND



E-569	0900	ENG6	NEW JERSEY B-23
E-571	0900	ENG6	NEW JERSEY A-4
E-570	0900	ENG6	NEW JERSEY C10
E-577	0930	WTS2	CARLTON CHRISTMAS
E-187	0930	ENG3	OUTBACK FIREFIGHTING
E-182	0930	ENG3	DS FIRE SUSPRESSION
E-565	1000	SKG2	FLANAGAN QUALITMISC
E-611	1000	AMBU	AMR CONTRA COSTA
E-232	1000	POT2	JOHNSON STAINLESS
E-566	1030	SKG2	BULL CREEK

**OVERHEAD**

O-816	0800	ENGB	WATSON MATTHEW
O-503	0800	FMOD	SWEDBERG CONT
O-739	0800	REAF	STOKES, JOSEPH
O-621	0830	REAF	HOYLE, LAUREN
O-866	0830	PSCT	SPEARS, CONNER
O-637	0830	EQTR	AMES, LAWRENCE
O-823	0900	TFLD	JAMES, ROBERT
O-818	0900	ENGB	JUDY, SHAWN
O-820	0900	FFT2	LOVE, WILLIAM
O-819	0930	FFT2	WINEMILLER, THOMAS
O-972	0930	AADM	BAIN, JULIE
O-853	0930	HECM	VELA, DAVID
O-827	1000	DIVS	CAMERON, STEVEN
O-612	1000	SEC2	MOUNDALEXIS, NANCY
O-630	1000	HEQB	DEAN, RUSSELL
O-673	1030	EMPF	HOWARD, RYAN
O-828	1030	SEC2	ESTERS, MICHAEL
O-566	1030	HEQB	FARRELL, COREY
O-822	1100	TFLD	KORNEGAY, ANTHONY
O-821	1100	FFT1	BLEYHL, NICHOLAS
O-797	1100	SEC1	WHITEHAIR, PHELAN
O-568	1130	HEQB	RUBIO, RICARDO
O-778	1130	HMGB	LANCASTER, JACOB
O-817	1130	FFT1	DECOSTE, JAMES

TRAINING MESSAGE - Trainees - please check in with the Training Specialist, by accessing the fillable Trainee Check-In Form here:



**If Trainee or Trainer is demobing:** Trainers – Trainer needs to **fill out the relevant parts of the Task Book** and do an **Incident Personnel Performance Rating** and discuss the assignment with the trainee.

**If Trainee is staying:** Trainee should contact Training Specialist to discuss plans for remainder of the assignment.

**If Trainee is demobing:** Trainee should access the Trainee Check-Out form here:



*Don Washco, 623-695-6487 Don\_Washco@firenet.gov*

## **Please Send Us Your Fireline Photos:**

Email them to [2020.augustcomplex@firenet.gov](mailto:2020.augustcomplex@firenet.gov) and include the date, location, and a photo credit.

# **PAUSE BEFORE POSTING IMAGES**

**Consider agency guidelines and potential ramifications before posting pictures of:**

- fireline personnel not wearing full PPE
- identifiable structures (i.e. addresses)
- burning / burned structures
- inmate crews
- faces of children
- accident or investigation scenes
- sensitive natural or cultural resources (or QR codes to maps that identify them)
- whiteboards / flipcharts with passwords or internal contacts listed

### **Media in California**

**The media in California have unlimited access to the fire area, with very few exceptions.**

**California Penal Code 409.5(d):** Nothing shall prevent a duly authorized representative of any news service, newspaper, radio or television station or network from entering the areas closed pursuant to this section. Exceptions are crime scenes or deliberately interfering with incident operations.

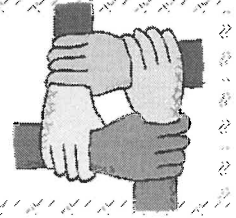
Only California and New Jersey have laws which allow unlimited access to emergency areas to legitimate press. Journalists do not have a general right to access private property. Consent is between the journalists and persons having control of the property; not the public safety agency.

The California Penal Code allows media access to scenes of disaster, riot, or civil disturbance, but not to crime scenes. Media access cannot be prevented for safety reasons unless their presence would impede firefighting operations. If entering a location is hazardous, they should be advised of the situation.

**Contact your incident Public Information Officer at (530) 487-4602 with any questions.**



## Human Resource Message



### MUTUAL RESPECT

High Performing Teams demonstrate several qualities and traits that make them stand out above average performing teams. Everyone can agree that the physical work that is done cannot be accomplished without teams managing the stress of the work in positive ways. During this assignment we will share with you the qualities that high performing teams strive for when managing *operational stress*. High performing teams demonstrate mutual respect when accomplishing the mission.

*Mutual Respect* is the foundation for honesty, trust, and meaningful communication. For relationships to remain healthy, both the boss and the worker must be equally respected and appreciated. *Mutual Respect is defined as a proper regard for the dignity of a person or position.* It is also the sharing of ideas but not always agreeing with the other party. In the end, both parties respect each other and their ideas even if they disagree.

*Social Mutual Respect is being conscious of what a person is either watching or listening to in common public areas. This also includes conversations that may be overheard by others in the general area.*

#### Take Home Message:

*Mutual Respect covers every way we interact with our environment:*

- The music you listen to out loud
- The webpages you look at on our network
- the conversations you have on your phone
- the way you agree or disagree with folks

The Human Resources Specialist is here on assignment to help you and your teams manage the operational stress keeping your crews safe, positive, and productive increasing your situational awareness.

Human Resource Specialist – Karen Mora  
970-420-5108 (call/text)

Human Resources Specialist – Tony Torres  
505.249.2341 (call/text) or email @ [Anthony.Torres@usda.gov](mailto:Anthony.Torres@usda.gov)



**Great Basin Team 2 Expectations 2020**  
***Safety is the Team's Number One Priority***  
***Everyone is a safety officer—See It, Say It, and Fix It!***

The Team is committed to identifying clear Task, Purpose, and End State that achieves the Agency Administrator's direction and objectives in a timely and cost effective manner.

The Team provides every person associated with the incident a safe, productive, and supportive work environment.

The Team operates in a transparent manner, facilitating open communication and dialogue up, down, and across the chain of command, with active listening and opportunity for discussion and collaboration.

Here are a few ways you can help the Team create an atmosphere of **Duty, Respect, and Integrity** as outlined in the Incident Response Pocket Guide (IRPG):

**If you Need to Leave the Incident Environment when Off Duty:**

Notify your supervisor of destination and estimated time of return in the event you are needed for duty prior to expected time.

**Alcohol /Illegal Drugs / Fitness for Duty**

Alcohol and illegal drugs are not permitted within the incident environment. Be ready, willing, and able to perform your duties. If you are unable to perform your duties, you may be released from the incident with the home unit or employer being notified of the circumstances.

**Work Environment/Human Relations:**

Conduct yourselves as professionals and maintain a positive, non-hostile work environment with mutual respect. Sexual harassment, discrimination, acts of reprisal or any inappropriate behavior that violates human rights, the provisions of equal employment opportunity (EEO), or ethics and conduct standards will not be tolerated. If you need clarification of these expectations, contact the Human Resource Specialist.

Your actions in the community outside of the incident environment must also conform to these standards while assigned to this incident. Your integrity is shown by obeying the law and following local rules and ordinances. Non-compliance with these expectations could result in your being released from the incident with the home unit or employer being notified of the circumstances.

**Work / Rest Guidelines:**

Any shift times over 16 hours require written justification and approval by the appropriate Section Chief on the Crew Time Report, and will be reviewed by the Incident Commander.

**Performance Evaluations:**

Performance Evaluations will be completed for all trainees and contractors (including ADs). Any unsatisfactory performance will be documented on an evaluation. It is your responsibility to ensure that your supervisor has completed an evaluation.

**Use of Social Media on Wildland Fire Assignments:**

Firefighters and Incident Management Team (IMT) members should be aware that existing agency-specific ethics and conduct regulations and restrictions governing the use of social media by federal employees on fire assignments apply.

Only authorized employees designated by the hosting unit may represent the government on public social media websites. If you choose to post to a social media website you should have a disclaimer that clearly states the views or opinions that you express are yours alone and do not represent the views of your agency or the IMT.

However, anything that you do post regarding wildland firefighting and the agency you work for reflects on that agency, the IMT you are assigned to and all wildland firefighters.

Social media sites are regularly monitored by federal agencies and employees may be held accountable for inappropriate conduct or ethics. When in doubt, don't post!

I hope you have a safe, productive and rewarding experience here. If you have any needs or concerns that cannot be addressed by my Command and General Staff, please feel free to visit with me.



Tony DeMasters  
Incident Commander



**GREAT BASIN 2 TEAM EVALUATION FORM**  
Please help us improve and share your comments.

LINE SUPPLY ORDER FORM  
(OSC/Division Supervisor only)

Date & Time Order Was Placed	Order Reference # (Div + #)	Mode of Delivery (Ground/Helo/Pickup @)	Location for Delivery (Division/LZ/DP Lat/Long)
DATE:		(Circle one) GROUND SUPPORT HELICOPTER (Include Elevation) TO BE PICKED UP BY @	
TIME:			
DATE NEEDED:	Time Needed:	Ground Contact:	

Order received in COMMUNICATIONS by:	Name:	Time:
Order received in SUPPLY by:	Name:	Time:
Order received in FOOD UNIT by:	Name:	Time:
Order received in GROUND SUPPORT by:	Name:	Time:
Order received in HELIBASE by:	Name:	Time:
Order delivered/shipped to final location by:	Name:	Time:

#	QUANTITY	ITEM	SHIPPED	PENDING	#	QUANTITY	ITEM	SHIPPED	PENDING
1		Breakfast-Meals			31		Lightweight Pump Kit- ea		
2		Lunch-Meals			32		Hose-1 1/2" -100' lg		
3		Dinner-Meals			33		Hose-1" - 100' lg		
4		MRE's(#of Cases) 12/cs			34		Hose-3/4" - 50' lg		
5		Cubies of Water - ea			35		Reducer-1 1/2" X 1" - ea		
6		Bottled Water-Case			36		Reducer-1" X 3/4" -ea		
7		Gatorade-Case			37		Gated "Y"-1 1/2" - ea		
8		Batteries-AA/box - ea			38		Gated "Y"-1" - ea		
9		Batteries- AAA/C/D - ea			39		Shut off valve 3/4" - ea		
10		Fuel-Unleaded-Gallons			40		In-Line Tee 1 1/2" X 1" - ea		
11		Fuel-Diesel-Gallons			41		Nozzle- 1 1/2" - ea		
12		Fuel-Drip Torch(60/40 mix) gals			42		Nozzle- 1" - ea		
13		Bar oil-QTs/Gallons			43		Nozzle 3/4" - ea		
14		2 cycle oil- saw (1btl per gallon)			44		First Aid Kit-20 man - ea		
15		2 cycle oil- pump -Qt			45		Chainsaw Kit - ea		
16		Sleeping Bags - ea			46		DIV Pump Kit (next page) - ea		
17		Fiber Tape - rolls			47		DIV Hose lay Kit (next page) - ea		
18		Plastic-roll / sqft			48		Line Spike Hygiene Kit (next page) ea.		
19		Parachute Cord-roll / ft							
20		Shovels - ea.					MISC. Please list below		
21		Pulaski - ea.							
22		Combi - ea.							
23		Fussee - case							
24		Drip Torch-Full/Empty							
25		Backpack Pump-Full/Empty							
26		SlingableBlivet-Suppress 55 gal							
27		SlingableBlivet - Drink 55 gal							
28		Folding Tank 1000/1500 gals					Accountable Property #'s		
29		Pumpkin 1400/3000/6000 gals							
30		Mark III Pump Kit - ea							





## SAW PARTS ORDER FORM

(Branch/OSC/Division Supervisor's Signature Required)

Form Date 9-7-2016

<b>RESOURCE NAME</b>	<b>RESOURCE NUMBER</b>	<b>CONTACT NAME</b>	<b>CONTACT PHONE #</b>
REQUEST DATE		PICKUP DATE	

### SAW INFORMATION

<b>Make</b>	Please Circle: Stihl Husqvarna Other _____
<b>Model</b>	Please Circle: 360 361 340 341 362 380 381 390 440 441 460 640 650 660 880 Other
<b>Bar Length</b>	24"__ 28"__ 30"__ 32"__ 36"__ other__

### REQUEST

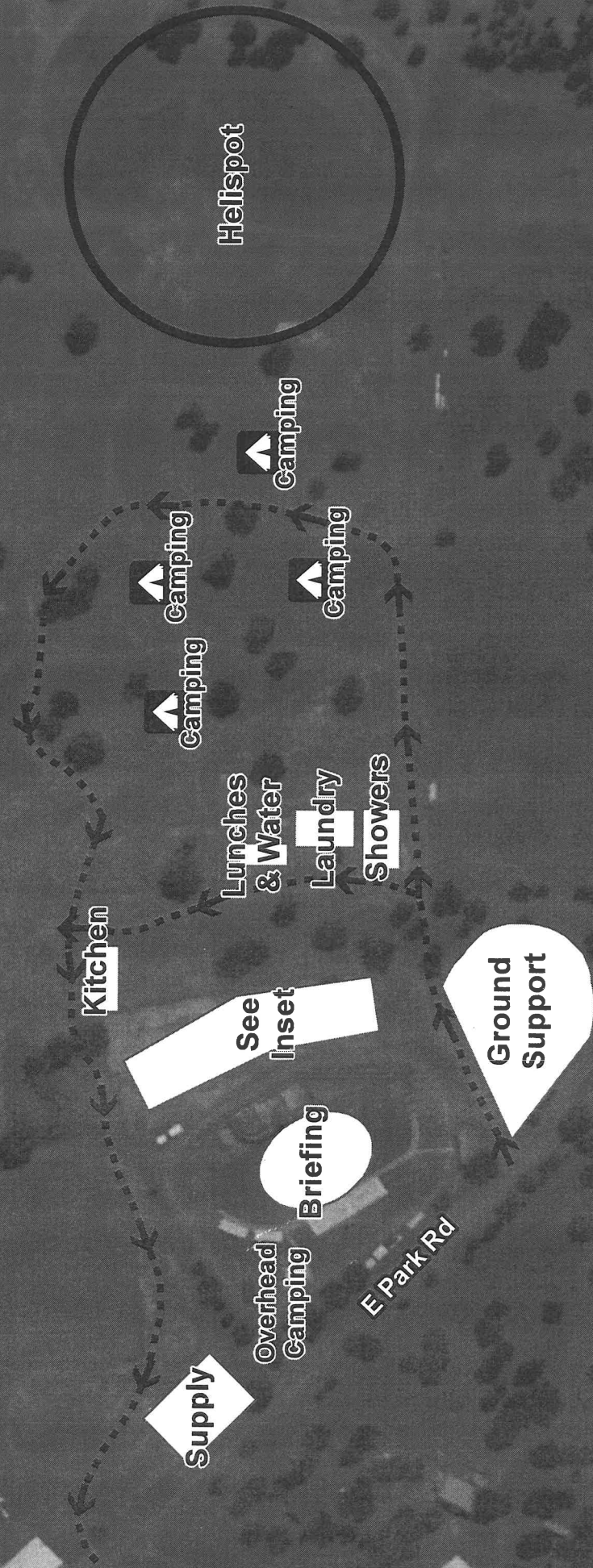
QUANTITY	PART NAME & NUMBER

#### For Sprocket (\*) & Chain Orders, Fill Out Below

# of Drivers	Please Circle: 84 91 98 103 104 105 114
Pitch(*)	Please Circle: 1/4" 3/8" .325" .404" 3/4"
Gauge	Please Circle: .043 .050 .058 .063
Tooth Layout	Please Circle: Full Semi-Skip Full Skip
Tooth Cut	Please Circle: Chisel Micro-Chisel Semi-Chisel Chamfer Chisel
#Sprocket Teeth(*)	Please Circle: 7 8 Other_____

APPROVERS PRINTED NAME (OSC/BRANCH/DIVS)	APPROVERS SIGNATURE (OSC/BRANCH/DIVS)	APPROVERS POSITION	DATE

# Stonyford Base Camp



Fuel Tender

US Army Area

**Legend:**

- Isolation Tent
- Frontline Medical
- Medical
- Plans Check-in
- Comm Unit
- Logistics/Security
- Liaison/PIO
- RADO

**Organizational Chart:**

- US Army
- US Army
- US Army
- US Army Safety/Ops

**Other Labels:**

- RAVDO





# HEALTH AND SAFETY MESSAGE

***SAFETY*** starts with ***YOU***

We are **ALL** accountable for **SAFE** behaviors

For Day/Night Operations: September 23, 2020

INCIDENT: **August Complex**

TIME: Day-0600 Night-1900

## **Major Hazards and Risks:**

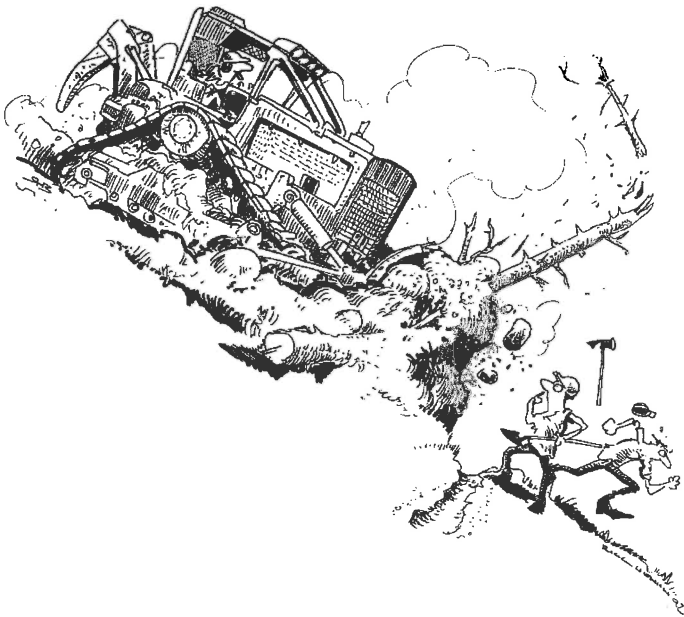
- **DRIVING:** Drive defensively. Be aware of **ALL VEHICLES** on roadways and fire area. Remember, traffic and recreational visitors & hunters will be very heavy throughout the fire and non-fire areas.
- **Heat Related Illness (HRI):** Temps on the increase. Monitor yourself and others. Drink plenty of water/fluids, take frequent breaks, get 8 hours of sleep and get enough food to support your task of the day. Drink often! Stay Hydrated!!!!!!!!!!!!!!
- **HAZARD TREES:** Look up, Look down, Look around for signs of fire weakened trees.

### Fire Order of the Day:

#### ***#2: Know what your fire is doing at all times!***

- Evaluate the forecasts provided in the IAP. Validate with hourly weather observations.
- Listen to IMET or FBAN messages on the radio for updates.
- Take hourly weather readings before and during burnout operations

## **Watch Out Situation of The Day**



5. UNINFORMED ON STRATEGY, TACTICS AND HAZARDS

## **SNAG SAFETY**

**S**ize up snag hazards in work area.  
**N**ever become complacent.  
**A**lways look up.  
**G**et weather reports.

**S**cout out parking, sleeping, work areas and safety zones.  
**A**dvice co-workers of known hazards.  
**F**ace your hazard and take appropriate actions.  
**E**xamine work area for other hazards.  
**T**ake extra caution around heavy equipment.  
**Y**ou are ultimately responsible for your own safety.

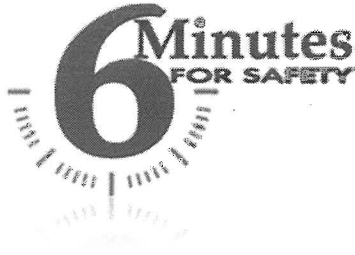
### **ENVIRONMENTAL/OPERATIONAL CONDITIONS THAT INCREASE SNAG HAZARDS**

- Strong winds
- Night operations
- Steep Slopes
- Diseased or bug-kill areas
- Helicopter bucket drops and rotor down drafts
- Retardant drops
- Vibrations from heavy equipment and motor vehicles operating nearby

## **Your Safety Team:**

**Laney Cutshaw, Brandon Hoffman & Donald Meadows**

**If you see something, say something!!**



## **My Safety**

*Leadership Category*

**An important aspect of safety is individual responsibility for one's own health and safety. Even with the best supervision, each individual firefighter will occasionally be required to make personal decisions concerning their safety. It is important that individual responsibility is taught as the basis for a viable safety program. Some of those individual responsibilities are:**

- Fitness for duty. Begin each work shift both mentally and physically prepared for the rigors of wildland firefighting. Getting adequate sleep, maintaining a healthy diet, and proactively participating in physical training is the foundation of "My Safety".
- Utilization of personal protective equipment (PPE). Wear your PPE without being told. Each individual is responsible for performing their own risk assessments. If a hazard is identified that can be mitigated by wearing a particular PPE component it should be utilized. Fireline supervisors have more important duties to focus on other than performing glove patrol.
- Following safe work practices. Using a spotter when backing up vehicles is the prudent and professional course of action. If you are unsure of how to perform a job task safely, ask your supervisor or an experienced coworker.
- Using the correct reference materials is an important aspect of safety. You should have a working knowledge of the Red Book, IRPG, and your local operating guidelines.
- Ensure instructions are clearly understood. Communication is a basic responsibility for all fire personnel. Ask appropriate questions to clarify uncertain issues. Speak up when you observe hazards that may place yourself or others at risk.
- Maintain situational awareness at all times. Awareness is a vital component of "My Safety". Pay attention to what is happening around your area of operations. Always display an awareness of what is happening around you by asking questions or making comments.

**Summary: Do not expect someone else to be responsible for your safety. Take it upon yourself to make "My Safety" your number one priority.**

### **Discussions Points:**

- Talk about ways you can improve your safety.
- Have your supervisor talk about their expectations for individual safety.

### **Resources:**

[Incident Response Pocket Guide, PMS 461](#)  
[Interagency Standards for Fire & Fire Aviation Operations](#)  
[Wildland Fire Incident Management Field Guide, PMS 210](#)

# Covid-19 Testing for the August Complex- South Zone

Testing is available for all employees assigned to the August Complex South Zone. The testing center is provided by Glenn County Public Health.

The testing location is Orland Memorial Hall, 320 Third St., Orland, CA. This is @ a 20 min. drive North on I-5 from Willows, CA.

You must register as a patient through their website; this will take @ 15-20 min.

Insurance information is requested however the testing is free from the State of CA.

Great Basin Team 2 members will have a block of time to test Friday 9/25 from 0800-1000.

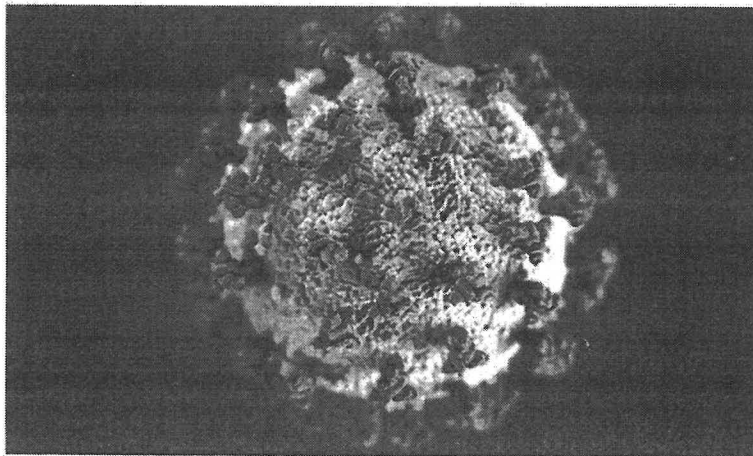
Other testing times can be scheduled, after your De-mob, Tuesday-Saturday 0700-1900.

You will be notified of the test results in 4-6 days.

If you have any questions, contact Bruce Hicks Covid Coordinator (775) 742-7285. If you cannot access the internet; you can register by calling (888)-634-1123.

How to sign up to receive a test:

1. Logon to <https://LHI.care/covidtesting>
2. Choose your location: California.
3. Answer the screening questions, list your occupation as a First Responder.
4. Create a profile and register as a patient to receive your ID #. **You will need to provide this ID # for the testing center.** Great Basin Team 2 members testing 9/25 **STOP HERE.**
5. If you are **not** testing 9/25 0800-1000 continue below.
6. You will be asked to re-login using your new username and password you created.
7. Change the zip code of your location to 95963.
8. Choose the testing site as Orland Memorial Hall, 320 Third St. Orland, CA 95963.
9. Choose the date and time you wish to be tested.
10. Show up at the scheduled time.



## **COVID-19 SAFETY BULLETIN**

### **Do YOUR Part, Prevent Spread!**

Remind & Correct: Any Public Area,  
**MASK UP!**

When off the line,  
**MASK UP!**

When moving around the incident,  
**MASK UP!**

When wiping down apparatus/vehicles,  
**MASK UP!**

When in Public Spaces,  
**MASK UP!**

While washing your hands frequently!  
**MASK UP!**

When meetings outside & in PUBLIC,  
**MASK UP!**

When at the chow line and mess hall,  
**MASK UP!**

**WHAT IS OUR MESSAGE?**

# **MASK UP, PLEASE!**

## 2020 COVID-19 Guidance

### LEADERS INTENT:

- Incident responders have a **DUTY** to safeguard each other and the public we serve from hazards. It is through our **RESPECT** for everyone's health and safety that we follow these mitigations, and we rely on everyone's **INTEGRITY** to ensure that we do so and expect the same of others.
- All incident personnel are expected to conduct **self-screening** of their health on a daily basis. Individuals experiencing any of the symptoms should take precautions to self-isolate and immediately report symptoms to your supervisor and to the IMT's Medical Officer or MEDL for assessment.
- All incident personnel will adhere to the **Module of One** concept to the extent practical.
- All incident personnel and visitors will wear **cloth face coverings** when six feet of social distancing cannot be maintained with others outside of their Module of One.
- All incident personnel and visitors are required to wear **cloth face coverings** when attending briefings or meetings in common use areas at ICP and camps.
- All incident personnel and visitors will wear **cloth face coverings** whenever they enter an enclosed incident facility, such as yurt, tent, building, restroom facility, or other common-use areas regardless of proximity to other people.

### ALL RESOURCES (IMT Members, Single Resource, Operational & Support resources):

- Each resource should arrive at the incident "self-sufficient" for 72 hours, including food, water, sanitizer or wipes, batteries, etc.

### ICP AND CAMPS

- Access into ICP and some base camp facilities may be restricted to essential personnel only, i.e. module supervisors and trainees.
- To promote isolation and social distancing, operational resources will be assigned to camps and spike camps dispersed on the incident.
- Food will be individually packaged and delivered to drop points for distribution. Special dietary needs should be reported to your line supervisor.
- Daily operational briefings will be conducted via radio or virtually. Only supervisors and trainees should attend in-person briefings.

<sup>1</sup>Symptoms of Coronavirus

<https://www.cdc.gov/coronavirus/2019-ncov/symptoms-testing/symptoms.html>



## WILDLAND FIRE COVID-19 SCREENING TOOL

Today or in the past 24 hours, have you had any of the following symptoms<sup>1</sup>?

Symptom
Cough more than expected?
Shortness of breath or difficulty breathing?
Fever? Chills?
Muscle pain, outside your normal for firefighting?
Sore throat?
New loss of taste or smell?
Fatigue, outside your normal for firefighting?
Headache, outside your normal for firefighting?
Congestion or runny nose, outside your normal for firefighting?
Nausea or vomiting
Diarrhea
<i>* Take temperature with no-touch thermometer, if available *</i>

### Instructions for Screening

Item	What to Do
If resource has a cough that is more than expected, shortness of breath or difficulty breathing, or any other symptoms listed.	DO NOT MOBILIZE
At Entries: Consider adequate number of personnel needed for screening. Although medical personnel are ideal, screeners do not have to be medically trained. If resource has cough, shortness of breath or difficulty breathing, or any other listed symptoms including fever (over 100.4) at entry.	DO NOT ANNOUNCE Ask individual to step aside and follow the steps below.

### Steps to follow

Escort symptomatic individual to isolation area.
Isolation support personnel should begin documentation.
Have symptomatic individual contact Supervisor for further direction.
Notify public health officials.
Have individual transported as appropriate.
Protect and secure any collected Personal Identifiable Information (PII) or Personal Health Information (PHI).

<sup>1</sup> Symptoms of Coronavirus

<https://www.cdc.gov/coronavirus/2019-ncov/symptoms-testing/symptoms.html>

# COVID-19 OPERATIONAL FLOWCHART

Personnel shall be screened for signs and symptoms at check-in.

All supervisors shall monitor their personnel for signs and symptoms.

Personnel who show signs and symptoms shall:

- Not report to their assignment
- Notify their immediate supervisor
- Report to the medical tent for evaluation

The medical unit will evaluate personnel and make a recommendation.

If signs and symptoms are confirmed, medical unit will:

- Have personnel self-isolate
- Identify personnel's movements at incident for contact assessment
- Refer personnel to testing facility
- Make necessary team notifications

Personnel showing signs and symptoms will be tested.

(If test result positive)

(If test result negative)

*Personnel shall continue to self-isolate at location designated by MEDL*

If conditions not met  
...or until they are

One negative test does not resolve. Personnel must receive two negative results 24 hours apart and be symptom-free before returning to duty (statement from licensed physician that personnel does not have COVID can be substituted).

(If conditions met)

*Return to duty.*

Supervisor shall:

- notify home unit of personnel's status
- begin worker's compensation process
- complete personnel's DEMOB process

If home unit is outside of GACC, also notify R5 FAM Director and R5 CERT IC.

IMT will provide direction and support until personnel is received by the home unit.

## INCIDENT SAFETY ANALYSIS 215a

August Complex CA-000753 - Wednesday, September 23, 2020

8. Location	9. Hazard	6. Control or Abatement Action (Engineering, Administrative, PPE, Avoidance, Education, etc)
ALL	Helicopter Operations	<ul style="list-style-type: none"> <li>~ Stay clear of all bucket drops when suppression actions are in place and allow 1 minute prior to re-entry.</li> <li>~ Monitor A-G communications.</li> <li>~ Follow aviation safety guidelines in IRPG and IHOG.</li> </ul>
Branch 43	Aerial Ignition	<ul style="list-style-type: none"> <li>~ Follow Aerial Ignition Plan and the RMA for aerial ignition.</li> <li>~ Verify ground resource locations prior to ignitions.</li> <li>~ Ignition devices may roll downhill plan for the outcome.</li> <li>~ Coordinate with adjoining Divisions.</li> <li>~ Assure accountability prior to ignition</li> <li>~ Identify trigger points during pre-briefing</li> </ul>
Branch 43, Structure Branch	Mop-up & Rehab	<ul style="list-style-type: none"> <li>~ Do not work above or below personnel during rehab/mop-up operations.</li> <li>~ Alert crew personnel of rolling debris by yelling to affected individuals.</li> <li>~ Position debris that could roll vertically on slope.</li> <li>~ Wear eye protection.</li> <li>~ Identify and mitigate hazard trees within areas of mop-up operations</li> <li>~ Assure LCES is in place at all time.</li> </ul>
ALL	Driving & Traffic	<ul style="list-style-type: none"> <li>~ Practice "Defensive Driving" techniques traveling on all roads and city streets.</li> <li>~ Use spotters when backing.</li> <li>~ Honk horn to alert personnel when backing.</li> <li>~ Keep clutter off dash and inside cab.</li> <li>~ Follow Driving LCES (Lights, Chock blocks, Emergency brake, Seat belts.</li> <li>~ Always use headlights.</li> <li>~ Yield to pedestrians and bicycles.</li> <li>~ Observe posted speed limits.</li> <li>~ Use the 3 second rule for following distance when driving.</li> <li>~ Use chock blocks, turn wheels into hill.</li> <li>~ Avoid distractions (eating, cell phones, radio).</li> <li>~ Ensure that windshields are kept clean of dust and bugs.</li> <li>~ Allow Dust to settle to maintain safe visibility.</li> </ul>
ALL	Fatigue & Over Exertion	<ul style="list-style-type: none"> <li>~ Drink 1 quart of water each hour during and after work.</li> <li>~ Rotate crews out of smoky areas.</li> <li>~ Set a reasonable work pace and allow adequate rest breaks while on the project.</li> <li>~ Stagger work crews start time to limit fatigue.</li> <li>~ Use buddy system to monitor personnel of heat related and fatigue issues.</li> <li>~ Follow work / rest guidelines.</li> </ul>
Branch 43, Structure Branch	Firing Operations & Devices	<ul style="list-style-type: none"> <li>~ Only personnel trained in the use of each device will be authorized to use firing equipment.</li> <li>~ Ensure all personnel are aware of firing operation that may affect them.</li> <li>~ Wear appropriate PPE.</li> <li>~ Ensure aerial/ground ignition plans have been adequately developed and personnel are briefed.</li> </ul>
Branch 43, Structure Branch	Indirect Fireline	<ul style="list-style-type: none"> <li>~ Post lookouts, identify escape routes and safety zones (IRPG pg. 7).</li> <li>~ Review "Strategy/Indirect Attack" (IRPG pg. 83).</li> </ul>
ALL	Firefighter & Public Smoke Exposure	<ul style="list-style-type: none"> <li>~ Identify homes and structures with private parties remaining behind the evacuation.</li> <li>~ Identify personnel responsible for contacting private parties.</li> <li>~ Use warning lights and provide traffic control on roadways during smoky and night operations.</li> <li>~ Rotate crews out of smoky areas during firing and mop-up operations.</li> <li>~ Contact Communications when firing operations are initiated.</li> </ul>

## INCIDENT SAFETY ANALYSIS 215a

Branch 43, Structure Branch	Heavy Equipment Operations	<ul style="list-style-type: none"> <li>~ Ensure communications are established with operators.</li> <li>~ Use hand signals if other communications are unavailable.</li> <li>~ Maintain a 50'-100' exclusion area around equipment and increase it to 2 1/2 times tree height when in timber.</li> <li>~ Use a spotter when backing.</li> <li>~ Avoid working below heavy equipment.</li> </ul>
ALL	Heat Related Illness (HRI)& Dehydration	<ul style="list-style-type: none"> <li>~ Drink Fluids throughout operational period (6-8 qts/shift).</li> <li>~ Maintain water/electrolyte ratio of 3 to 1.</li> <li>~ Carry extra water on line and cache water at drop points.</li> <li>~ Take Frequent breaks, minimum of 10 minutes every hour.</li> <li>~ Allow out of area resources time to acclimatize before expecting peak performance.</li> <li>~ Recognize symptoms of HEAT RELATED ILLNESS which include.                             <ul style="list-style-type: none"> <li>o Lack of energy</li> <li>o Headaches, dizziness</li> <li>o Lack of rest</li> <li>o No hunger, poor eating habits</li> <li>o Hot skin, and lack of sweating</li> </ul> </li> </ul>
Branch 43, Structure Branch	Steep Terrain & Rolling Debris	<ul style="list-style-type: none"> <li>~ Maintain 8'-10' spacing when working &amp; walking.</li> <li>~ Don't work above any personnel.</li> <li>~ Be on the lookout for rolling rocks, debris, or burning material.</li> <li>~ Evaluate necessity to send personnel in areas with limited access.</li> <li>~ Post lookouts (IRPG pg 7).</li> </ul>
ALL	Communications	<ul style="list-style-type: none"> <li>~ Maintain communication with aviation resources, and suppression organization.</li> <li>~ Ensure all know frequency and protocol for contacting resources.</li> <li>~ Utilize the ICS 205.</li> <li>~ Utilize human repeaters when working in dead spots.</li> </ul>
Branch 43, Structure Branch	Extreme Fire Behavior	<ul style="list-style-type: none"> <li>~ Share weather observations with all personnel assigned to division.</li> <li>~ Establish "Trigger Points" to withdraw.</li> <li>~ Use "Risk Management" process prior to engaging in suppression actions, refer to page 1, IRPG.</li> </ul>
Branch 43, Structure Branch	Spike Camp	<ul style="list-style-type: none"> <li>~ Keep a clean camp.</li> <li>~ Ensure communications are in place.</li> <li>~ Review and observe "Line Spike" considerations (IRPG pg. 95).</li> </ul>
Branch 43, Structure Branch	Structure Protection & HAZMAT	<ul style="list-style-type: none"> <li>~ Review "Wildland Urban Interface" Watch outs, IRPG page 12.</li> <li>~ Use "Structure Assessment" checklist, IRPG pages 12-16.</li> <li>~ Follow "HAZMAT Incident Operations" on pages 36-41 in IRPG.</li> </ul>
Branch 43, Structure Branch	Chain Saw Operations	<ul style="list-style-type: none"> <li>~ Follow "Hazard Tree Safety" guidelines, IRPG page 22</li> <li>~ Look up, Look down, Look around for hazard tree indicators.</li> <li>~ Only fell and buck trees within your expertise, and training.</li> <li>~ Follow "Procedural Felling Operations" on page 85 in IRPG.</li> <li>~ Do not fall trees during high wind events.</li> <li>~ Ensure proper use of all required PPE.</li> </ul>
Branch 43, Structure Branch	Chipper Operations	<ul style="list-style-type: none"> <li>~ Follow Assigned JHA.</li> <li>~ Avoid loose clothing.</li> <li>~ Don't wear radio mic. cords.</li> <li>~ Feed vegetation butt first.</li> <li>~ Only authorized personnel can operate or feed the chipper.</li> <li>~ Get proper training before chipping.</li> <li>~ Familiarize yourself with the chipper and it's safety features.</li> <li>~ Wear appropriate PPE including gloves, hearing and eye protection.</li> <li>~ Keep hand out of the feeder area.</li> </ul>
Branch 43, Structure Branch	ATV/UTV use	<ul style="list-style-type: none"> <li>~ Ensure equipment is inspected and safe to use.</li> <li>~ Restrict UTV's to max width of 50" on ATV trails due to width and severe out sloped conditions.</li> <li>~ Ensure operator is trained and certified to operate.</li> <li>~ Ensure operator has proper PPE according to the Redbook and/or RMA.</li> <li>~ Question if it is mission critical.</li> </ul>

## INCIDENT SAFETY ANALYSIS 215a

ALL	Unburned Area/Reburn Potential	<ul style="list-style-type: none"> <li>~ Monitor weather.</li> <li>~ Base actions upon observed and predicted fire behavior.</li> <li>~ LCES Checklist (IRPG pg. 6).</li> <li>~ Look Up, Down and Around (IRPG pg. 2-3).</li> </ul>
ALL	COVID-19	<ul style="list-style-type: none"> <li>~ Follow local and CDC guidelines.</li> <li>~ Practice social distancing.</li> <li>~ Wear face coverings in designated areas and when social distancing is not possible.</li> <li>~ Wash and Sanitize hands often.</li> <li>~ Follow module of one concept.</li> <li>~ Minimize number of individuals at briefings and meetings.</li> <li>~ <b>Monitor symptoms of all resources daily and report concerns to COVID Coordinator.</b></li> </ul>
ALL	Power Utilities	<ul style="list-style-type: none"> <li>~ Notify all personnel of down electrical lines.</li> <li>~ Refer to the IRPG page 24 for Power Line Safety.</li> <li>~ Always treat downed wires as energized.</li> <li>~ Identify and avoid high tension transmission lines.</li> <li>~ Identify and avoid high pressure natural gas lines.</li> <li>~ Identify and avoid damaged gas service near structures.</li> <li>~ Be aware of utility restoration in your work area.</li> </ul>
ALL	Wildlife & Livestock	<ul style="list-style-type: none"> <li>~ Watch out for wildlife &amp; livestock inside fire area and along roadways.</li> <li>~ Clean up all debris and trash during each operational period.</li> <li>~ Rattlesnakes and Scorpions are plentiful in the fire area, keep your distance from these critters.</li> <li>~ Wear gloves when moving logs and debris.</li> <li>~ Look around before you sit or step over logs and rocks.</li> <li>~ Give wildlife plenty of room to escape/ retreat to safety.</li> </ul>
Branch 43, Structure Branch	Night Operations	<ul style="list-style-type: none"> <li>~ Maintain high visibility in work area and wear vest while in roadway.</li> <li>~ Use glow sticks to mark hazards.</li> <li>~ Ensure personnel have a personal light (headlamp).</li> <li>~ Watch for signs of fatigue.</li> <li>~ Take breaks away from areas of known hazard.</li> </ul>
ALL	Bees, Ticks, Mosquitoes	<ul style="list-style-type: none"> <li>~ Canvas crew members for those with known allergic reactions to stings.</li> <li>~ Ensure crew members have medication pens if needed.</li> <li>~ Perform daily self inspection.</li> <li>~ Use repellent as necessary.</li> <li>~ Advanced Life Support, multi-dose epi and airway protection.</li> <li>~ Keep affected area clean and bandaged.</li> <li>~ Be extra careful when eating and/or drinking to avoid stings to mouth and throat.</li> </ul>
ALL	Poisonous Plants	<ul style="list-style-type: none"> <li>~ Identify and Avoid hazard areas for Poison Oak.</li> <li>~ Launder clothing.</li> <li>~ Shower frequently</li> <li>~ If symptomatic seek medical attention.</li> </ul>

# MEDICAL PLAN (ICS 206 WF)

1. Incident Name			2. Operational Period					
<b>August Complex (South Zone)</b>			Date/Time: <b>09/23/2020 0700 - 1900</b>					
3. EMS / Ambulance Services								
Name	Location	Phone & EMS Frequency	Advanced Life Support (ALS)					
			Yes	No				
Butte Co. EMS Willows, CA	Willows, Ca (Use for Branch 41)	530-934-6431 / 911	X					
Med Star Mendocino Ukiah, CA	Ukiah, Ca (Use for Branch 43)	707-462-3001 911	X					
MEDIC 8 Mountain Medics	Gravely Spike	Command	X					
MEDIC 7 Pro Ambulance	DIV D/F 2 (From Stonyford)	Command	X					
Medic 4 Contra Costa County	DIV O 2	Command	X					
MEDIC 5 American Ambulance	RICE STRUCTURE GROUP	Command	X					
MEDIC 7 Pro Ambulance	STONYFORD BASE CAMP	Command	X					
4. Air Rescue / Air Ambulance Services								
Name	Phone	Type of Aircraft & Capability						
Enloe Flight Care Chico, CA1531 Esplanade Chico, CA 95926	800-344-1863	Medical Air Ship, 1 Patient Day and Night, NVG						
REACH Air Medical 1524 East St. Redding, CA 96001	800-338-4045	Medical Air Ship, 1 Patient Day and Night, NVG						
REACH Air Medical 4615 Highland Springs Rd Lakeport, CA 95453.	707-324-2400	Medical Air Ship, 1 Patient Day and Night, NVG						
5. Hospitals (all times estimated from incident location)								
Name and Level	GPS Datum – WGS 84		Travel Time		Phone	Helipad		Address
	Degrees	Decimal Minutes	Air	Gnd		Yes	No	
Adventist Health Howard Memorial Level 4 Trauma	Lat:	39° 23.20' N	15 min	50 min	707-456-3050	X		1 Marcela Dr.  Willits, CA
	Long:	122° 20.21' W						
	VHF:	TX/RX 156.075						
Ukiah Valley Medical Center Level 2 Trauma	Lat:	39° 9.18'	25 min	2.5 Hour	707-462-3111	X		275 Hospital Dr.  Ukiah, CA
	Long:	123° 12.130'						
	VHF:	TX/RX 156.075						
Enloe Medical Center Level 2 Trauma	Lat:	39 44.5'	40 Min	2.0 Hour	530-895-9107	X		1531 Esplanade  Chico, CA
	Long:	121 51.1'						
	VHF:	TX/RX 156.075						
Mercy Medical Center Level 2 Trauma	Lat:	40 34.33'	45 Min	2.25 Hour	530-225-6000	X		2175 Rosaline Ave.  Redding, CA
	Long:	122 23.26'						
	VHF:	TX/RX 156.075						
U.C. Davis Hospital Level 1 Trauma and Burn Center	Lat:	38 33.2'	45 Min	2.25 Hour	916-734-3636 Burn Unit 916-734-3790 ER	X		2315 Stockton Blvd  Sacramento, CA
	Long:	121 27.7'						
	VHF:	TX/RX 156.075						

## MEDICAL PLAN (ICS 206 WF)

<b>6. Division / Crew Emergency Pre-Plan</b>		<i>Update and discuss IWI/MIR procedures. *Back of IAP</i>	
<b>STONYFORD BASE CAMP</b>	<b>Point of Contact:</b> Frontline Medical Trailer <b>EMS Responders &amp; Capability:</b> ALS Ambulance Medic 7 MEDL Tim Egan Paramedic 775-232-3515 <b>Helispot:</b> Stonyford Cargo <b>Lat: / Long:</b> 39° 22.32 ' / 122° 34.04' <b>Elevation:</b> 1,190'  If Emergency at ICP Willows call Glenn Co. Sherriff Dept (911). Calling 911 from Base camp connects to Colusa Co. Bruce Hicks MEDL Command/775 742-7285		
<b>ICP WILLOWS, CA</b>	<b>Point of Contact</b> MEDL/COVID Coordinator Bruce Hicks Command/775 742-7285 <b>EMS Responders &amp; Capability:</b> 911 for Local Ambulance.		
<b>DIV DELTA/FOXTROT 2</b>	<b>Point of Contact:</b> Fagin Medic 7 <b>EMS Responders &amp; Capability:</b> EMT/Paramedic ALS Ambulance (From Stonyford)		
<b>GRAVELY SPIKE</b>	<b>Point of Contact:</b> Saavedra Medic 8 <b>EMS Responders &amp; Capability:</b> EMT/Paramedic ALS Ambulance		
<b>PILLSBURY STRUCTURE GROUP 2</b>	<b>Point of Contact:</b> Klytta EMPF (0800-0030), (0800-0030) Roberts EMTF <b>EMS Responders &amp; Capability:</b> ALS Ambulance Medic 5		
<b>DIV R/O 2 (as needed)</b>	<b>Point of Contact:</b> White EMPF <b>EMS Responders &amp; Capability:</b> ALS Ambulance Medic 4, REMS 1 (Noble)		
<b>DIV TANGO 2</b>	<b>Point of Contact:</b> REMS 2 <b>EMS Responders &amp; Capability:</b> Stowe EMPF, ALS, UTV, TECH RESCUE		
<b>STONYFORD BASE CAMP</b>	<b>Point of Contact:</b> Egan MEDL, Hadley MEDL <b>EMS Responders &amp; Capability:</b> ALS Ambulance Medic 7, Frontline Medical Trailer ALS		
<b>7. Remote Aid Stations</b>		<b>Remote Camp Location(s)</b>	
N/A	<b>Equipment Available on Site:</b>		<b>Basic Medical Supplies</b>
	<b>Ambulance ETA:</b>		<b>Air –                      Ground –</b>
<b>8. Prepared By (Medical Unit Leader)</b>		<b>9. Date/Time</b>	<b>10. Reviewed By (Safety Officer)</b>
Tim Egan MEDL		09/22/2020	Laney Cutshaw SOF1
			<b>11. Date/Time</b> 09/22/2020

### Basecamp or ICP Emergency

Contact COMMS with patient complaint/condition and location.

- Notify Medical Unit of any injury/illness being transported to Medical Unit prior to transport.

# MEDICAL PLAN (ICS 206 WF)

Controlled Unclassified Information//Basic

## Medical Incident Report

**FOR A NON-EMERGENCY INCIDENT, WORK THROUGH CHAIN OF COMMAND TO REPORT AND TRANSPORT INJURED PERSONNEL AS NECESSARY.**

**FOR A MEDICAL EMERGENCY: IDENTIFY ON SCENE INCIDENT COMMANDER BY NAME AND POSITION AND ANNOUNCE "MEDICAL EMERGENCY" TO INITIATE RESPONSE FROM IMT COMMUNICATIONS/DISPATCH.**

**Use the following items to communicate situation to communications/dispatch.**

**1. CONTACT COMMUNICATIONS / DISPATCH (Verify correct frequency prior to starting report)**

*Ex: "Communications, Div. Alpha. Stand-by for Emergency Traffic."*

**2. INCIDENT STATUS: Provide incident summary (including number of patients) and command structure.**

*Ex: "Communications, I have a Red priority patient, unconscious, struck by a falling tree. Requesting air ambulance to Forest Road 1 at (Lat./Long.) This will be the Trout Meadow Medical, IC is TFLD Jones. EMT Smith is providing medical care."*

Severity of Emergency / Transport Priority	<input type="checkbox"/> <b>RED / PRIORITY 1 Life or limb threatening injury or illness. Evacuation need is IMMEDIATE</b> <i>Ex: Unconscious, difficulty breathing, bleeding severely, 2° – 3° burns more than 4 palm sizes, heat stroke, disoriented.</i> <input type="checkbox"/> <b>YELLOW / PRIORITY 2 Serious Injury or illness. Evacuation may be DELAYED if necessary.</b> <i>Ex: Significant trauma, unable to walk, 2° – 3° burns not more than 1-3 palm sizes.</i> <input type="checkbox"/> <b>GREEN / PRIORITY 3 Minor Injury or illness. Non-Emergency transport</b> <i>Ex: Sprains, strains, minor heat-related illness.</i>	
Nature of Injury or Illness & Mechanism of Injury		Brief Summary of Injury or Illness <i>(Ex: Unconscious, Struck by Falling Tree)</i>
Transport Request		Air Ambulance / Short Haul/Hoist Ground Ambulance / Other
Patient Location		Descriptive Location & Lat. / Long. (WGS84)
Incident Name		Geographic Name + "Medical" <i>(Ex: Trout Meadow Medical)</i>
On-Scene Incident Commander		Name of on-scene IC of Incident within an Incident <i>(Ex: TFLD Jones)</i>
Patient Care		Name of Care Provider <i>(Ex: EMT Smith)</i>

**3. INITIAL PATIENT ASSESSMENT: Complete this section for each patient as applicable (start with the most severe patient)**

Patient Assessment: See IRPG page 106

Treatment:

**4. TRANSPORT PLAN:**

Evacuation Location (if different): (Descriptive Location (drop point, intersection, etc.) or Lat. / Long.) Patient's ETA to Evacuation Location:

Helispot / Extraction Site Size and Hazards:

**5. ADDITIONAL RESOURCES / EQUIPMENT NEEDS:**

*Example: Paramedic/EMT, Crews, Immobilization Devices, AED, Oxygen, Trauma Bag, IV/Fluid(s), Splints, Rope rescue, Wheeled litter, HAZMAT, Extrication*

**6. COMMUNICATIONS: Identify State Air/Ground EMS Frequencies and Hospital Contacts as applicable**

Function	Channel Name/Number	Receive (RX)	Tone/NAC *	Transmit (TX)	Tone/NAC *
COMMAND					
AIR-TO-GRND					
TACTICAL					

**7. CONTINGENCY: Considerations: If primary options fail, what actions can be implemented in conjunction with primary evacuation method? Be thinking ahead.**

**8. ADDITIONAL INFORMATION: Updates/Changes, etc.**

**REMEMBER: Confirm ETA's of resources ordered. Act according to your level of training. Be Alert. Keep Calm. Think Clearly. Act Decisively.**