

**CONNECTED**

# August Complex

## Incident Action Plan

CA-MNF-000753 (P5NFP420 0508)

**August 27, 2020**

0700-1900



### Daily Schedule – Pacific Daylight Savings Time

0700 – Operational Briefing – Stonyford

1000 – C&G – Teams Virtual

1500 Pre-Planning Meeting - ICP

1600 – Planning Meeting - ICP

1800 – IAP Parts Due

Map QR Code



08-27-2020

### INCIDENT OBJECTIVES (ICS 202)

<b>1. Incident Name:</b> August Complex	<b>2. Operational Period:</b> Date From: 08-27-2020 Time From: 0700	Date To: 08-27-2020 Time To: 1900
---	--	--------------------------------------

**3. Objective(s):**

Leaders Intent:

1. Suppress the August Complex fires using management strategies and tactics that provide the highest likelihood of success given risks to responders.

Management Objectives:

1. Ensure the safety and wellbeing of emergency responders and the public by making timely risk-informed decisions that align with Agency values.
2. Protect natural and cultural resources of Federal, State, and Local interest by engaging agency resource advisors, partners and community stakeholders in effective communication and planning.
3. Foster good relationships with local cooperators, stakeholders and the public by providing coordinated, accurate and timely information.
4. Keep costs commensurate with values at risk by working with the local unit and coordinating with the Agency Administrator and Incident Business Advisor.
5. Coordinate with the Forest's COVID-19 Advisor to ensure COVID mitigation measures are in alignment with Agency expectations and adapt as necessary to changing conditions.

Control Objectives

Keep the fire:

- South of M2 road and Riley Ridge to Hull Canyon Rd to the 302.
- North of the M3 road, Brushy Ridge and Horse Ridge, to M1 Road.
- East of the M1 Road.
- West of the 306 Road.

**4. Operational Period Command Emphasis:**

See attached Weather Forecast

General Situational Awareness:

See attached Safety Message

**5. Site Safety Plan Required?** Yes  No

Approved Site Safety Plan(s) Located at:

**6. Incident Action Plan** (the items checked below are included in this Incident Action Plan):

<input checked="" type="checkbox"/> ICS 203	<input checked="" type="checkbox"/> Safety Message	<u>Other Attachments:</u> _____ _____ _____ _____
<input checked="" type="checkbox"/> ICS 204	<input checked="" type="checkbox"/> Weather Forecast	
<input checked="" type="checkbox"/> ICS 205	<input checked="" type="checkbox"/> Fire Behavior	
<input checked="" type="checkbox"/> ICS 206	<input type="checkbox"/>	
<input checked="" type="checkbox"/> ICS 220	<input type="checkbox"/>	

**7. Prepared by:** Name: JEFF ADAMS Position/Title: PSLT Signature: [Signature]

**8. Approved by Incident Commander:** Name: MARK MORALES Signature: [Signature]

ICS 202 IAP Page \_\_\_\_\_ Date/Time: 8/26/2020 1830

## ORGANIZATION ASSIGNMENT LIST (ICS 203)

<b>1. Incident Name: August Complex</b>		<b>2. Operational Period:</b> Date From: 08-27-2020 Time From: 0700		Date To: 08-27-2020 Time To: 1900	
<b>3. Incident Commander(s)/ Agency Incident Coordinator and Command Staff: (include location)</b>			<b>7. Operations Section:</b>		
IC	Mark Morales; Andy Baker (T)		Chief	Paul Reynolds	
			Planning Operations	Jon Wallace	Derrick Moore (T)
			Staging Area		
Safety Officer	Brian Beisel; Pat Sheridan; Paul Churchill (T)		<b>Branch</b>	<b>I</b>	
Public Info. Officer	Michael Williams; Jason Nedlo (T)		Branch Director	Mike Brunson	
Liaison Officer	Andy Gaston; Jeff Owenby		Deputy		
<b>4. Agency/Organization Representatives:</b>			Division/Group	A	Carpenter / Krage (t)
Agency/Organization	Name		Division/Group	C	Carpenter / Hoyle (T)
USFS	Christine Hill / Frank Abley		Division/Group	D	Packard
FMO	Curtis Coots / Terry Nickerson		Division/Group		
READ	Matt Nourmohamadian		Division/Group		
Agency Rep Cal-Fire	C. Thompson (TGU Unit Chief)		<b>Branch</b>	<b>II</b>	
BLM	Ray Ucha		Branch Director	Michael Womack	Kerry Clark (T)
<b>5. Planning Section:</b>			Division/Group	T	Scott Cones
Chief	James R. Anderson; Tom Lowry; Jeff Adams (T); Greg Sanders (T)		Division/Group	V	Doig / Moor (T)
Resources Unit	Joe Robles, Sue Wilder, Steverson Moffat (T)		Division/Group		
			<b>Branch</b>	<b>III</b>	
Demobilization Unit	Henry Hickerson		Branch Director	Dale Shippelhoute	
Situation Unit	Scott Hamlet		Division/Group	J	Shippelhoute
Fire Behavior Analyst	Michael Housh		Division/Group	N	Wood / Sinkovitz (T)
GIS Specialist	Mannin Dodd (Virtual); Geoff Holden (Remote)				
Information Technology	Dan Leduc; Sean Wyckoff (T)				
Training Specialist	Debra Burgos		<b>Branch</b>	<b>IV</b>	
Strategic Ops Planner	Ben Rowland		Branch Director	Joe Tieso	
<b>6. Logistics Section:</b>			Division/Group	O	S. Banks / Reyes (T)
Chief	Chris Alford; Jane Arteaga (T)		Division/Group	R	Will Marcks
Deputy			<b>Air Ops Branch</b>		
<b>Support Branch</b>			Air Ops Branch Dir.	Michael Mowery	Michael O'Leary (t)
Director					
Supply Unit	Sandy Rhodes				
Facilities Unit	Lewis Brostrom		<b>8. Finance/Administration Section:</b>		
Ground Support Unit	Randy Chapin		Chief	Karen Patterson	
<b>Service Branch</b>			Deputy		
Director			Time Unit	Bryant; Blackwell; McDonald	
Communications Unit	Mark Spann		Procurement Unit	Sherry Helmick; Kelvin Jackson (T)	
Medical Unit	Ellis; Clark; Chapin		Comp/Claims Unit	Donna Rogers	
Security	Christopher Cooley		Cost Unit		
<b>9. Prepared by: Name: Joe Robles</b> Position/Title: RESL Signature: /s/ Joe Robles					
ICS 203	IAP Page <u>  3  </u>	Date/Time: 08/26/2020 2030			



# Fire Weather Forecast



**FORECAST NO:** 7  
**PREDICTION FOR:** 24 Hr Shift  
**SHIFT DATE:** Thursday 8/27/2020  
**TIME AND DATE ISSUED:** 8/26/2020 1800 PDT

**INCIDENT:** August Complex  
**UNIT:** Mendocino NF  
**SIGNED:** Chuck Redman  
 Incident Meteorologist (IMET)

### Discussion:

Above normal temperatures are expected to continue the next few days as an upper ridge remains across the Great Basin. A very weak upper trough is also expected to linger over Northern California, but the only affects will be afternoon cumulus buildup over the higher terrain. Due to the light flow aloft, terrain driven winds are expected in the valleys with a light southerly wind over the ridges. Extended models continue to have difficulty in resolving the strength/timing of a dry cold frontal passage by early next week.

### WEATHER FORECAST FOR TODAY:

**SKY/WEATHER:** Mostly sunny.

**Max Temperature:** Lower to mid-80s higher elevation, except 90 to 95 lower valleys.

**Min RH:** 18 to 25 percent.

#### **-20 ft Level WINDS:**

**Lower Valleys/Lower Slopes** Down drainage wind in the morning up to 10 mph, becoming up drainage by noon.

**Upper Ridges:** East 10 mph shifting South around 10 mph by noon. Afternoon gusts to 15 mph.

**TRANSPORT WINDS:** South to 10 mph. **MIXING HEIGHT:** 6500 AGL

### TONIGHT:

**SKY/WEATHER:** Clear.

**Min Temperature:** 65 to 75.

**Max RH:** 35 to 45 percent.

#### **WINDS:**

#### **-20 ft Level-**

**Valleys/Lower Slopes:** West wind 5 to 10 mph with late evening gusts to 15 mph by midnight.

**Upper Ridges:** South around 10 mph, becoming east after midnight.

### FRIDAY:

**SKY/WEATHER:** Mostly sunny.

**Max Temperature:** 82 to 88 higher elevation, except 95 to 100 lower valleys

**Min RH:** 15 to 25 percent.

#### **WINDS:**

**-20 ft Level- Lower Valleys** Down drainage wind in the morning around 10 mph, becoming up drainage by noon.

**Upper Ridges:** South to Southeast to 10 mph.

**TRANSPORT WINDS:** South to Southeast around 10 mph. **MIX. HEIGHT** 8500 AGL.

Mendocino Pass RAWS



Stoneyford RAWS



## FIRE BEHAVIOR FORECAST

<b>FORECAST NUMBER:</b> #09		<b>TYPE OF FIRE:</b> Wildfire
<b>FIRE NAME:</b> August Complex		<b>OPERATIONAL PERIOD:</b> Thursday 27 August 2020
<b>DATE ISSUED:</b> Wednesday 26 August 2020		<b>TIME ISSUED:</b> 1800
<b>UNIT:</b>	CA-MNF	<i>Michael W. Housh</i>
<b>Prepared By:</b>	Michael W. Housh/FBAN	

### INPUTS

**WEATHER SUMMARY:**

**TODAY (Thursday):** See Fire Weather Forecast.

**WEATHER:** Mostly Sunny with above normal temperatures and no anticipated precipitation.

**Lower Valleys/Slopes:** **MAX Temp:** 90-95 degrees **MIN Rh:** 18-25% **WIND:** Down drainage @ up to 10 mph in morning becoming up drainage by 1200 hrs.

**Upper Ridges:** **MAX Temp:** 80-85 degrees **MIN Rh:** 18-25% **WIND:** East @ 10 mph shifting South @ 10 mph by 1200 hrs.

**LAL:** 1 **CWR:** 0%

**MIXING HEIGHT** 8500 ft **TRANSPORT WINDS** South at up to 10 mph. .

**GENERAL FUEL ASSUMPTIONS** There are three vegetative groups to consider within the fire area, grass, grass/shrub and shrub. It has been over 100 days since much of the fire area has received over 0.10" of precipitation and all three groups are extremely dry and are burning readily.

10 Hr fuel moistures in the fire area were observed at 5-8% on August 26<sup>th</sup>.

### OUTPUTS

**FIRE BEHAVIOR**

**GENERAL**

No precipitation combined with continued low humidity's (18-28%) over the fire area yesterday will continue to dry the fuels and set the stage for increased fire activity in exposed areas or where wind and slope align. While winds will be primarily out of the South @ 10 mph most of the fire spread is anticipated to be terrain driven except on exposed ridgetops.

Vegetation Type	Fuel Model	Fire Behavior			
		ROS (ch\hr)	FL (ft)	PIG (%)	Spot Dist (mi)
Grass	GR2	45-50	5-6	76	0.25
Grass/Shrub	GS2	20-25	4-5	76	0.25
Shrub	SH7	45-50	15-16	76	0.25

**SPECIFIC:**

>**Branch I:** Anticipate continued Fire spread up the Willow Creek drainage towards the M2 Road and close the gap between the Doe and Glade Fires. Tatham fire is expected to continue to spread upslope/updrainage.

**Branch II:** Anticipate active upslope fire spread on the Western edge of the Doe Fire. The pocket of unburned fuel in the 311 Road area is expected to fill in as the fire moves upslope along Bear Wallow Ridge.

**Branch III:** Anticipate continued upslope fire spread in the Dutch Oven Creek/Deaty Ridge Area.

**Branch IV:** Expect continued fire movement upslope to the NE along Panther Ridge.

**AIR OPERATIONS:**

Have a backup plan and don't rely solely on air support to execute your mission as smoke will continue to impact air operations.

### SAFETY

Critically dry fuels in the fire area. Expect higher rates of spread where wind and slope align or on exposed ridgetops. Post a lookout!

## Division/Group Assignment List (ICS 204)

Incident Name <b>August Complex</b>		Branch <b>I</b>	Division/Group <b>A</b>			
Operational Period 0700 - 1900		Date 08/27/2020				
<b>Operations Personnel</b>						
Operations Chief	Jon Wallace / Paul Reynolds / Derrick Moore (T)		Division/Group Supervisor	Kendall Carpenter / Patrick Krage (T)		
Branch Director	Mike Brunson		Air Attack Supervisor No.			
<b>Resources Assigned this Period</b>						
Strike Team/Task Force/ Resource Designator	LWD	Leader	# Persons	Drop Off PT./Time	Pick Up PT./Time	
O-299 TFLD	9/8	Dave Bakas	1			
C-9 HC1 Eldorado	8/29	Ben Strahan	20			
E-22 ENG3 Black Range	9/1	Chris Olguin	3			
E-34 ENG3 Fire Trax 357	9/1	Brad Martin	3			
E-182 ENG3 DS Fire 14	9/8	Robert Degnall	3			
E-93 ENG4 JD Forestry 2	8/30	Alberto Garcia	3			
E-31 ENG5 Alaska Fire 51	8/30	Brain Terry	3			
O-128 HEQB	9/4	Angel Avela	1			
E-17 DOZ2 Humphrey	9/2	Ron Humphrey	2			
E-3 MAST1 Diversified Resources	9/4	Scott Velasco	1			
E-50 WTS2 Lenihan 2	8/31	Fred Lenihan	1			
E-49 WTS1 Precision Towing 38	8/31	Mike Dainauskus	1			
O-78 SOF2	9/2	Larry Connell	1		Anthony Peak Lookout	
O-232 SOFR	9/5	Jeff Kerr	1		Anthony Peak Lookout	
O-69 READ		Lowell Thomas	1			
<b>Control Operations/Work Assignments:</b>						
-Look for opportunities to go direct on northwest corner of Doe Fire.						
<b>Special Instructions:</b>						
Use caution around snags and flag as needed for safety						
Use caution when driving on roadways and on the fireline.						
Backhaul excessive equipment and trash. Follow all COVID protocols and precautions.						
READS will call DIVS when entering.						
<b>Division/Group Communication Summary</b>						
Function	Channel Name	RX Frequency N/W	RX Tone/NAC	TX Frequency N/W	TX Tone/NAC	Mode
COMMAND	CMD 4	172.6750	T4 / 136.5	163.0375	T4 / 136.5	
TACTICAL	NIFC T1	168.0500	T4 / 136.5	168.0500	T4 / 136.5	
AIR TO GROUND	A/G TAC	172.3500		172.3500		
Prepared by RESL(T) Steverson Moffat		Approved by PSC2(T) Jeff Adams		Date 08/26/20	Time 2000	

## Division/Group Assignment List (ICS 204)

Incident Name <b>August Complex</b>			Branch <b>I</b>		Division/Group <b>C</b>	
Operational Period 0700 - 1900			Date 08/27/2020			
<b>Operations Personnel</b>						
Operations Chief		Jon Wallace / Paul Reynolds / Derrick Moore (T)		Division/Group Supervisor		Kendall Carpenter / Robert Hoyle (T)
Branch Director		Mike Brunson		Air Attack Supervisor No.		
<b>Resources Assigned this Period</b>						
Strike Team/Task Force/ Resource Designator		LWD	Leader	# Persons	Drop Off PT./Time	Pick Up PT./Time
C-11 Mad River		8/31	Tad Hair	20		
C-8 HC2 Franco 8		8/31	Juan Parras	20		
O-235 FMOD Pacific Ridgeline		9/6	Gabriel Satela	2		
O-236 FMOD Tacoma Fallers		9/7	Tacoma Manuel	2		
E-44 ENG3 Allied		8/29	Wiley Volz	3		
E-12 ENG3 Rogue Valley		8/30	Stuart Johnson	3		
E-24 ENG3 Wildfire Support 316		9/1	Ryan Champion	3		
E-46 ENG3 PNF 32		8/31	James Bollanger	5		
E-45 ENG3 PNF 34		8/31		5		
E-13 ENG6 Smokin Ridge 311		9/3	Fred Deffer	4		
E-14 ENG6 Rocky Point		9/2	Kevin Trapp	3		
ENG6 MNF Utility 352		9/2		2		
WT MNF 58		9/2	Fred Burrows	2		
E-52 WT Dietz 106		8/31	Richard McGowan	2		
E-21 WTS2 Partridge Const 14		9/4	Warren Partridge	1		
E-47 DOZ2 Let R Buck		8/31	Bob Trent	2		
E-48 DOZ2 Wycoff		8/29	Billy Wycoff	2		
E-4 MAST Zeb's Tree Service		9/4	Matt Bale	2		
O-301 TFLD		9/9	Ryan Shannahan	1		
O-78 SOF2		9/2	Larry Connell	1		Anthony Peak Lookout
O-232 SOFR		9/5	Jeff Kerr	1		Anthony Peak Lookout
O-09992 READ			Robert Weaver	1		
<b>Control Operations/Work Assignments:</b> -Continue to hold M2 road, firing out to keep even with main fire.						
<b>Special Instructions:</b> Use caution around snags and flag as needed for safety Use caution when driving on roadways and on the fireline. Backhaul excessive equipment and trash. Follow all COVID protocols and precautions. READS will call DIVS when entering.						
<b>Division/Group Communication Summary</b>						
Function	Channel Name	RX Frequency N/W	RX Tone/NAC	TX Frequency N/W	TX Tone/NAC	Mode
COMMAND	CMD 4	172.6750	T4 / 136.5	163.0375	T4 / 136.5	
TACTICAL	NIFC T6	166.7750	T4 / 136.5	166.7750	T4 / 136.5	
AIR TO GROUND	A/G TAC	172.3500		172.3500		
Prepared by RESL(T) Steverson Moffat			Approved by PSC2(T) Jeff Adams		Date 08/26/20	Time 2000

## Division/Group Assignment List (ICS 204)

<b>Incident Name</b> <b>August Complex</b>			<b>Branch</b> <b>I</b>		<b>Division/Group</b> <b>D</b>	
<b>Operational Period 0700 - 1900</b>			<b>Date</b> 08/27/2020			
<b>Operations Personnel</b>						
<b>Operations Chief</b>		Jon Wallace / Paul Reynolds / Derrick Moore		<b>Division/Group Supervisor</b>		Jason Packard
<b>Branch Director</b>		Mike Brunson		<b>Air Attack Supervisor No.</b>		
<b>Resources Assigned this Period</b>						
<b>Strike Team/Task Force/ Resource Designator</b>	<b>LWD</b>	<b>Leader</b>	<b>Number Persons</b>	<b>Drop Off PT./Time</b>	<b>Pick Up PT./Time</b>	
C-93 HC2 OC 22	9/8	Rex Sundstrom	20			
E-195 ENG6 DB Jet	9/8	Robert Chandler	3			
E-94 ENG6 Big State	8/30	Israel Silas	3			
E-15 ENG6 Texas Fire Service 55	9/3	Carlos Magana	3			
E-187 ENG3 Outback Fire		Lance Wollebach	4			
E-193 ENG3 Brush 51		Phil Felder	4			
E-173 DOZ2 Tough Company 02	9/8	Jeremy Todd	2			
E-172 DOZ2 D17 Ben Trucking		Arnie Torres	1			
E-270 DOZ2 CM Dozer		Steven Edsall	1			
E-18 DOZ2 Rosevear LLC	9/3	Carl Steinmann	2			
O-30 HEQB	9/3	Ron Rockis	1			
O-342 STEQ	9/9	Trent Duncan	1			
O-78 SOF2	9/2	Larry Connell	1		Anthony Peak Lookout	
O-232 SOFR	9/5	Jeff Kerr	1		Anthony Peak Lookout	
O-43 HEQB		Phil Oosahwe	1			
O-129 READ		Ridenor	1			
<b>Control Operations/Work Assignments:</b>						
-Scout areas for direct line or North and West sides of fire.						
<b>Special Instructions</b>						
Use caution around snags and flag as needed for safety						
Use caution when driving on roadways and on the fireline.						
Follow all COVID protocols and precautions.						
READS will call DIVS when entering						
<b>Division/Group Communication Summary</b>						
<b>Function</b>	<b>Channel Name</b>	<b>RX Frequency N/W</b>	<b>RX Tone/NAC</b>	<b>TX Frequency N/W</b>	<b>TX Tone/NAC</b>	<b>Mode</b>
COMMAND	CMD 3	170.6875	T4 / 136.5	166.5750	T4 / 136.5	
TACTICAL	NIFC T1	168.0500	T4 / 136.5	168.0500	T4 / 136.5	
AIR TO GROUND	A/G TAC	172.3500		172.3500		
<b>Prepared by</b> RESL(T) Steverson Moffat		<b>Approved by</b> PSC2(T) Jeff Adams			<b>Date</b> 08/26/20	<b>Time</b> 2000



### Division/Group Assignment List (ICS 204)

Incident Name <b>August Complex</b>			Branch <b>II</b>		Division/Group <b>T</b>	
Operational Period 0700 - 1900			Date 08/27/2020			
<b>Operations Personnel</b>						
Operations Chief		Jon Wallace / Paul Reynolds / Derrick Moore		Division/Group Supervisor		Scott Cones
Branch Director		Michael Womack / Kerry Clark (T)		Air Attack Supervisor No.		
<b>Resources Assigned this Period</b>						
Strike Team/Task Force/ Resource Designator		LWD	Leader	Number Persons	Drop Off PT./Time	Pick Up PT./Time
E-179 ENG3 Treasure Valley 3491		8/30	John Hovey	3		
E-180 ENG6 Rocky Point 116		8/30	KC Frye	3		
E-185 ENG6 Windswept 604		9/8	Chris Schiuefelbein	3		
E-113 WTS2 Weber Fire 266		9/7	Kyle Braegger	1		
E-262 WTS1		9/8	Dave Pierce	1		
O-219 SOF2		9/4	Troy Floyd	1		
O-149 SOFR (T)		9/4	Lem Johnson	1		
O-09993 READ			Peter Anderer	1		
Control Operations/Work Assignments: -Continue to prep around structures. Point protection as needed. Continue work around Keeran and Garnett camp securing perimeter.						
Special Instructions READS will call DIVS when entering.						
<b>Division/Group Communication Summary</b>						
Function	Channel Name	RX Frequency N/W	RX Tone/NAC	TX Frequency N/W	TX Tone/NAC	Mode
COMMAND	CMD 2	170.4125	T4 / 136.5	165.9625	T4 / 136.5	
TACTICAL	NIFC T3	168.6000	T4 / 136.5	168.6000	T4 / 136.5	
AIR TO GROUND	A/G TAC	172.3500		172.3500		
Prepared by RESL(T) Steverson Moffat			Approved by PSC2(T) Jeff Adams		Date 08/26/20	Time 2000

## Division/Group Assignment List (ICS 204)

Incident Name <b>August Complex</b>			Branch <b>II</b>		Division/Group <b>V</b>	
Operational Period 0700 - 1900			Date 08/27/2020			
<b>Operations Personnel</b>						
Operations Chief		Jon Wallace / Paul Reynolds / Derrick Moore		Division/Group Supervisor		Vic Doig / Colten Moor (T)
Branch Director		Michael Womack / Kerry Clark (T)		Air Attack Supervisor No.		
<b>Resources Assigned this Period</b>						
Strike Team/Task Force/ Resource Designator	LWD	Leader	Number Persons	Drop Off PT./Time	Pick Up PT./Time	
Smokejumpers	8/30	Matt Weston	8			
O-67 TFLD	8/31	Brandon McNeil	1			
O-150 TFLD (T)	9/4	Zach Bones	1			
E-35 ENG3 Elephant Head 325	8/31	Chris Anthis	3			
E-39 ENG3 Shiloh 215	9/2	Ron Thalacker	3			
E-128 ENG4 Flashback Fire 26	9/4	Richard Orosco	2			
E-127 ENG4 Rattlesnake Ridge 09	9/4	Jermaine Allen	3			
E-129 ENG6 JD Forestry	9/4	Mario Colin	3			
E-11 ENG6 Sundance	9/3	Matt Abbe	3			
E-12 ENG6 Clearwater	9/3	Paul Shultz	3			
E-16 ENG6 Criddle 60	9/3	Paul Criddle	3			
E-130 ENG6 Alpine Wildfire 8	9/4	Jake Heckathorn	3			
O-219 SOF2	9/4	Troy Floyd	1			
O-149 SOFR (T)	9/4	Lem Johnson	1			
O-69 READ		Lowell Thomas	1			
O-100 READ		Glenboki	1			
Control Operations/Work Assignments: -Continue to prep around structures. Point protection as needed.						
Special Instructions: Use caution around snags and flag as needed for safety Use caution when driving on roadways and on the fireline. Backhaul excessive equipment and trash. Follow all COVID protocols and precautions. READS will call DIVS when entering.						
<b>Division/Group Communication Summary</b>						
Function	Channel Name	RX Frequency N/W	RX Tone/NAC	TX Frequency N/W	TX Tone/NAC	Mode
COMMAND	CMD 2	170.4125	T4 / 136.5	165.9625	T4 / 136.5	
TACTICAL	NIFC T7	168.2500	T4 / 136.5	168.2500	T4 / 136.5	
AIR TO GROUND	A/G TAC	172.3500		172.3500		
Prepared by RESL (T) Steverson Moffat			Approved by PSC2 Jeff Adams		Date 08/26/20	Time 2000

### Division/Group Assignment List (ICS 204)

Incident Name <b>August Complex</b>		Branch <b>III</b>	Division/Group <b>J</b>			
Operational Period 0700 - 1900			Date <b>08/27/2020</b>			
<b>Operations Personnel</b>						
Operations Chief	Jon Wallace / Paul Reynolds / Derrick Moore		Division/Group Supervisor	Dale Shippelhouse		
Branch Director	Dale Shippelhouse		Air Attack Supervisor No.			
<b>Resources Assigned this Period</b>						
Strike Team/Task Force/ Resource Designator	LWD	Leader	Number Persons	Drop Off PT./Time	Pick Up PT./Time	
E-38 ENG3 Chihuahua 3063	8/31	John Badjer	3			
E-36 ENG3 Black Range 2348	9/1	Brandon Shepperd	3			
E-28 ENG3 Mike's Water 18	8/30	Mike Sturm	3			
E-26 ENG3 San Juan 31	8/31	Chad Vecclio	3			
E-37 ENG3 J3 Contracting 26	8/31	Ronnie Hernandez	3			
E-27 WT Precision Towing 36	8/31	Larry Jensen	1			
O-79 SOF2	9/2	Tommy Hawkins	1			
O-149 SOFR(T)	9/4	Brian Plume	1			
Control Operations/Work Assignments: -Patrol fire perimeter for any hotspots. Continue mop up.						
Special Instructions: Use caution around snags and flag as needed for safety. Use caution when driving on roadways and on the fireline. Backhaul excessive equipment and trash. Follow all COVID protocols and precautions. READS will call DIVS when entering.						
<b>Division/Group Communication Summary</b>						
Function	Channel Name	RX Frequency N/W	RX Tone/NAC	TX Frequency N/W	TX Tone/NAC	Mode
COMMAND	CMD 2	170.4125	T4 / 136.5	165.9625	T4 / 136.5	
TACTICAL	NIFC T5	166.7250	T4 / 136.5	166.7250	T4 / 136.5	
AIR TO GROUND	A/G TAC	172.3500		172.3500		
Prepared by RESL (T) Steverson Moffat		Approved by PSC2(T) Jeff Adams			Date 08/26/20	Time 2000

## Division/Group Assignment List (ICS 204)

<b>Incident Name</b> <b>August Complex</b>		<b>Branch</b> <b>III</b>	<b>Division/Group</b> <b>N</b>			
<b>Operational Period 0700 - 1900</b>		<b>Date</b> 08/27/2020				
<b>Operations Personnel</b>						
<b>Operations Chief</b>	Jon Wallace / Paul Reynolds / Derrick Moore (T)		<b>Division/Group Supervisor</b>	Robert Wood / Richard Sinkovitz (T)		
<b>Branch Director</b>	Dale Shippelhoue		<b>Air Attack Supervisor No.</b>			
<b>Resources Assigned this Period</b>						
<b>Strike Team/Task Force/ Resource Designator</b>	<b>LWD</b>	<b>Leader</b>	<b>Number Persons</b>	<b>Drop Off PT./Time</b>	<b>Pick Up PT./Time</b>	
C-31 HC2 Torres	9/1	Emilio Peralta	20			
E-33 ENG3 J3 Contracting 9	9/2	Ryan Mitchell	3			
E-23 ENG3 Spence Industrial 3492	9/2	Galen Pawson	3			
E-32 ENG3 Cascadia Fire 64	8/30	Jonathan Paul	3			
E-126 ENG3 CA-SRF 321	9/5	Josh Collum	7			
E-183 ENG3 Archer Mtn 15	9/6	Tom Hatton	3			
E-40 WT Buckskin 1132	8/31	Eric Foerstner	2			
O-79 SOF2	9/2	Tommy Hawkins	1			
O-149 SOFR(T)	9/4	Brian Plume	1			
O-210 EMTF	9/6	Derek Leong	1			
O-329 EMPF	9/2	Kevin Klytta	1			
O-09993 READ		Peter Anderer	1			
<b>Control Operations/Work Assignments:</b> -Improve indirect line where needed and continue to burn along dozer line to keep up with fire growth.						
<b>Special Instructions:</b> Use caution around snags and flag as needed for safety Use caution when driving on roadways and on the fireline. Backhaul excessive equipment and trash. Follow all COVID protocols and precautions. READS will call DIVS when entering.						
<b>Division/Group Communication Summary</b>						
<b>Function</b>	<b>Channel Name</b>	<b>RX Frequency N/W</b>	<b>RX Tone/NAC</b>	<b>TX Frequency N/W</b>	<b>TX Tone/NAC</b>	<b>Mode</b>
COMMAND	CMD 1	170.0000	T4 / 136.5	166.6750	T4 / 136.5	
TACTICAL	NIFC T5	166.7250	T4 / 136.5	166.7250	T4 / 136.5	
AIR TO GROUND	A/G TAC	172.3500		172.3500		
<b>Prepared by</b> RESL(T) Steverson Moffat		<b>Approved by</b> PSC2(T) Jeff Adams		<b>Date</b> 08/26/20	<b>Time</b> 2000	

## Division/Group Assignment List (ICS 204)

Incident Name <b>August Complex</b>			Branch <b>IV</b>		Division/Group <b>O</b>	
Operational Period 0700 - 1900			Date 08/27/2020			
<b>Operations Personnel</b>						
Operations Chief		Jon Wallace / Paul Reynolds / Derrick Moore		Division/Group Supervisor		Shannon Banks / Ray Reyes (T)
Branch Director		Joe Tieso		Air Attack Supervisor No.		
<b>Resources Assigned this Period</b>						
Strike Team/Task Force/ Resource Designator		LWD	Leader	Number Persons	Drop Off PT./Time	Pick Up PT./Time
HC1 Elk Mountain		9/7	Jimmy Fox	19		
C-8 HC2 Franco 2		8/30	Jesus Cisnero	20		
ENG3 MNF-52			Freeman	3		
ENG3 KNF-57			Mota	6		
DOZ2			Peters	2		
WT Tahoe 31			Rasmussen	2		
HEQB			Jackson	1		
HEQB (T)			Knoll	1		
Control Operations/Work Assignments: -Continue to build indirect line down Horse Ridge toward M6 road.						
Special Instructions: Use caution around snags and flag as needed for safety Use caution when driving on roadways and on the fireline. Backhaul excessive equipment and trash. Follow all COVID protocols and precautions. READS will call DIVS when entering.						
<b>Division/Group Communication Summary</b>						
Function	Channel Name	RX Frequency N/W	RX Tone/NAC	TX Frequency N/W	TX Tone/NAC	Mode
COMMAND	CMD 1	170.0000	T4 / 136.5	166.6750	T4 / 136.5	
TACTICAL	NIFC T6	166.7750	T4 / 136.5	166.7750	T4 / 136.5	
AIR TO GROUND	A/G TAC	172.3500		172.3500		
Prepared by RESL(T) Stevenson Moffat			Approved by PSC2(T) Jeff Adams		Date 08/26/20	Time 2000

## Division/Group Assignment List (ICS 204)

Incident Name <b>August Complex</b>		Branch <b>IV</b>	Division/Group <b>R</b>			
Operational Period 0700 - 1900		Date 08/27/2020				
<b>Operations Personnel</b>						
Operations Chief	Jon Wallace / Paul Reynolds / Derrick Moore		Division/Group Supervisor		Will Marcks	
Branch Director	Joe Tieso		Air Attack Supervisor No.			
<b>Resources Assigned this Period</b>						
Strike Team/Task Force/ Resource Designator	LWD	Leader	Number Persons	Drop Off PT./Time	Pick Up PT./Time	
HC2IA Diamond Fire 16	9/6	Phillips	20			
HC2 Franco 2	9/3	Cisneros	20			
ENG3 MNF 345	9/1	Moreno	4			
ENG3 MDF 356	9/2	Polly	5			
ENG3 MDF 46	9/2	Simpson	5			
ENG3 Ice 29	9/1	Teitus	3			
ENG6 HB Forestry		Hartman	3			
ENG6 Rocky Point		Flores	3			
WT KNF 21	9/2		2			
DOZ2		McBride	2			
E-19 DOZ2 Henthorn Equipment	9/3	Jeff Henthorn	2			
O-29 HEQB	8/31	Jeff Hakola	1			
<b>Control Operations/Work Assignments</b> -Hold and patrol line along Wesley Ives Creek.						
<b>Special Instructions</b> Use caution around snags and flag as needed for safety Use caution when driving on roadways and on the fireline. Backhaul excessive equipment and trash. Follow all COVID protocols and precautions. READS will call DIVS when entering.						
<b>Division/Group Communication Summary</b>						
Function	Channel Name	RX Frequency N/W	RX Tone/NAC	TX Frequency N/W	TX Tone/NAC	Mode
COMMAND	CMD 2	170.4125	T4 / 136.5	165.9625	T4 / 136.5	
TACTICAL	NIFC T1	168.0500	T4 / 136.5	168.0500	T4 / 136.5	
AIR TO GROUND	A/G TAC	172.3500		172.3500		
Prepared by RESL(T) Steverson Moffat		Approved by PSC2(T) Jeff Adams		Date 08/26/20	Time 2000	

**AIR OPERATIONS SUMMARY**

ICS 220

Prepared By: Mike Mowery

Prepared Date: 8/26/2020

Prepared Time: 1800

<b>1. INCIDENT NAME:</b> August Complex	<b>2. OPS PERIOD DATE:</b> 8/27/2020	<b>START TIME:</b> 0700	<b>END TIME:</b> 1930	<b>SUNRISE:</b> 0633	<b>SUNSET:</b> 1948
--	---	----------------------------	--------------------------	-------------------------	------------------------

<b>3. REMARKS (Safety Notes, Hazards, Air Operations Special Equipment, etc.):</b> Track all dip site locations/number of dips/gallons taken. Track all drop locations/number of drops/gallons dropped. All GPS data to be collected in DEGREES, MINUTES, DECIMAL MINUTES format. Avoid Aerial Application of retardant/foam/agent within 300' of waterways, bodies of water, etc. If Retardant/foam/agent is dropped within these areas, immediately notify the AOB and provide the following information: Lat/Long, estimated number of gallons and a map detailing the area. <b>CAUTION: POWERLINES AND SMOKE</b> <b>DIP SITES:</b> No dipping out of Eel River and Black Butte Creek	<b>4. Helibase Information:</b> Orland Helibase 39 43.16 122 08.48 Willits Helibase 39 27.04 123 22.3 Stonyford Cargo 39 22.32 122 34.04	<b>5. TFR's:</b> 8 point polygon Altitude 12,000 ft. NOTAM # 0/6018 Frequency: 124.2250 http://tfr.faa.gov
--	--	--

PERSONNEL	NAME	PHONE #	FREQUENCIES	RX	TX	8. Medevac: Guard 821 @ Redding on request ALS Hoist. 24 hrs. Request through Dispatch on Command repeater—Lat/Long and Vis. AIRTANKERS- order thru ATGS
AOBD	Mike Mowery	870-615-0287	Air Tactics	172.4500	172.4500	ATGS: H-507 Cobra Will use available helicopter as platform or fixed wing
AOBD-t	Mike O'Leary	239-336-9789	Rotor Victor	124.2250	124.2250	
ASGS	Bob Yeager	318-613-3683	Command 4 Repeater Linked	172.6750 Tone: T4 136.5	163.0375 Tone: T4 136.5	
Willits Helibase	Justin Buckbee	530-559-4532	A/G Tactical	172.3500	172.3500	VLATs, Heavy Air tankers and SEATs as assigned
Orland Helibase	Kibby McKibben	559-827-1817	A/G Command	168.3375 Drone	168.3375	Missions: Recon, Buckets, Retardant, Medevac, Air Attack, Jumpers/Paracargo Initial Attack w/in TFR, PSD w/ UAS Repeater placement and maintenance
ATGS	Rick Thompson	970-209-6989	TOLC	172.1375	172.1375	
ATGS H507 Cobra	Rico Gonzalez	530-605-6376	CALCORD	156.0750 Tone 156.7 (T6)	156.0750 Tone 156.7 (T6)	
			MNF Fire Net	171.5500	164.5000 T 1 2 5 6 9	
			Air Guard	168.6250 Tone 110.9	168.6250 No Tone	

FAA N#	TY	MAKE/ MODEL	BASE	AVAIL	START	REMARKS	FAA	TY	MAKE/ MODEL	BASE	AVAIL	START	REMARKS
61AJ	1	CH-47D A-	Willits	0700	0730	Ex, Buckets							
H-514	2	Bell 212 HP A-	Willits	0700	0730	Ex, Buckets, Cargo, Crews							
H-507	3	Cobra A-	Willits	0700	0730	Ex, ATGS platform							
H-516	2	Bell 212 A-	Orland	0700	0730	Ex, Buckets, Cargo, Crews							
2LM	3	Bell 206 L4 A-	Orland	0700	0730	Recon, Cargo, Buckets							

# AUGUST COMPLEX

## HEALTH AND SAFETY MESSAGE

We are ALL accountable for SAFE behaviors

**DATE:** August 27, 2020

**Major Hazards and Risks:** Transition, Driving, IWI, Fatigue

**Transition:** Transition is always a time of confusion and potential miscommunication due to changes in personnel. New resources don't have benefit of what has happened on the incident so take the time to learn the new faces, watch for changes in tactics (if any), and help get the new folks up-to-speed. We all want the same positive outcome from our efforts keeping safety as the top priority. We should all strive to go home in the same shape when we arrived.

**Driving:** Driving is always one of the most dangerous tasks that fire fighters do on a routine basis. Be alert for other vehicles, especially during shift change. There have been some close calls on the forest roads. Give large equipment as much room as possible as heavy vehicles need more time to react. Use your headlights at all times for added visibility, use low beams in dusty conditions. **DO NOT TEXT OR TALK ON CELL PHONE WHILE DRIVING!** Drive defensively and use passengers as lookouts and spotters while backing. Seat belts are a requirement when the vehicle is moving. Slow speeds down in the area of homes as children may be near by.

**Incident Within an Incident:** Do you know what you will do should someone get injured? With the long travel routes and smoke restricting the ability to fly have you identified how to move an injured person off the line? Have you reviewed the Medical Incident Report and understand the information needed for determining the appropriate response? Do you have the lat/long for identified locations for the response to the injured party? Travel times? Have you identified crew members that have medical training? If you answered "no" to any of these questions you are not prepared to handle an IWI. Please take the time to be prepared should so happen.

**Fatigue:** Maintain 2:1 work rest ratio. Get plenty of sleep at night and take breaks during the day. Fatigue causes mental and physical weakness. Supervisors and Unit Leaders are responsible for making sure that everyone in their unit are getting adequate rest each day. Shift lengths in excess of 16 hours should be the exception and must be mitigated the next operational period.



### **Texting While Driving is Prohibited!**

1. California law prohibits all motorists from using a cellphone while driving, except when used in hands-free mode.
2. 25% of all auto accidents are attributed to cellular phone use while driving.
3. *Taking your eyes off the road for 5 seconds while traveling 55 MPH, is equivalent to driving the length of 1 football field without looking at the road!*

**Incident Safety Officers:** Paul Churchill, Pat Sheridan, Brian Beisel



**August Complex - Thursday, August 27 0700-2000**

. Locatio	9. Hazard	6. Control or Abatement Action (Engineering, Administrative, PPE, Avoidance, Education, etc)
ALL	Driving & Traffic	<ul style="list-style-type: none"> <li>~ Practice "Defensive Driving" techniques traveling on all roads and city streets.</li> <li>~ Use spotters when backing.</li> <li>~ Honk horn to alert personnel when backing.</li> <li>~ Keep clutter off dash and inside cab.</li> <li>~ Follow Driving LCES (Lights, Chock blocks, Emergency brake, Seat belts.</li> <li>~ Always use headlights.</li> <li>~ Yield to pedestrians and bicycles.</li> <li>~ Observe posted speed limits.</li> <li>~ Use the 3 second rule for following distance when driving.</li> <li>~ Use chock blocks, turn wheels into hill.</li> <li>~ Avoid distractions (eating, cell phones, radio).</li> <li>~ Ensure that windshields are kept clean of dust and bugs.</li> </ul>
All	Fatigue & Over Exertion	<ul style="list-style-type: none"> <li>~ Drink 1 quart of water each hour during and after work.</li> <li>~ Rotate crews out of smoky areas.</li> <li>~ Set a reasonable work pace and allow adequate rest breaks while on the project.</li> <li>~ Stagger work crews start time to limit fatigue.</li> <li>~ Use buddy system to monitor personnel of heat related and fatigue issues.</li> <li>~ Follow work / rest guidelines.</li> </ul>
All	Hazard Trees	<ul style="list-style-type: none"> <li>~ Follow "Hazard Tree Safety" guidelines, IRPG page 22.</li> <li>~ Post lookouts, or use a spotter in mop-up areas with personnel.</li> <li>~ Don't park vehicles or take breaks in high concentrations of hazard trees.</li> <li>~ Establish trigger points for disengagement during high wind events.</li> <li>~ Remember that the hazard zone extends a minimum of 2 1/2 tree heights.</li> </ul>
All	Extreme Fire Behavior	<ul style="list-style-type: none"> <li>~ Share weather observations with all personnel assigned to division.</li> <li>~ Establish "Trigger Points" to withdraw.</li> <li>~ Use "Risk Management" process prior to engaging in suppression actions, refer to page 1, IRPG.</li> </ul>
ALL	Helicopter Operations	<ul style="list-style-type: none"> <li>~ Stay clear of all bucket drops when suppression actions are in place and allow 1 minute prior to re-entry.</li> <li>~ Monitor A-G communications.</li> <li>~ Follow aviation safety guidelines in IRPG P. 58 and IHOG.</li> </ul>
ALL	Heavy Equipment Operations	<ul style="list-style-type: none"> <li>~ Ensure communications are established with operators.</li> <li>~ Use hand signals if other communications are unavailable.</li> <li>~ Maintain a 50'-100' exclusion area around equipment and increase it to 1 1/2 times tree height when in timber.</li> <li>~ Use a spotter when backing.</li> <li>~ Avoid working below heavy equipment.</li> </ul>
ALL	Heat Related Illness (HRI)& Dehydration	<ul style="list-style-type: none"> <li>~ Drink Fluids throughout operational period (6-8 qts/shift).</li> <li>~ Maintain water/electrolyte ratio of 3 to 1.</li> <li>~ Carry extra water on line and cache water at drop points.</li> <li>~ Take Frequent breaks, minimum of 10 minutes every hour.</li> <li>~ Allow out of area resources time to acclimatize before expecting peak performance.</li> <li>~ Recognize symptoms of HEAT RELATED ILLNESS which include.                             <ul style="list-style-type: none"> <li>o Lack of energy</li> <li>o Headaches, dizziness</li> <li>o Lack of rest</li> <li>o No hunger, poor eating habits</li> <li>o Hot skin, and lack of sweating</li> </ul> </li> </ul>
AI	Steep Terrain & Rolling Debris	<ul style="list-style-type: none"> <li>~ Maintain 8'-10' spacing when working &amp; walking.</li> <li>~ Don't work above any personnel.</li> <li>~ Be on the lookout for rolling rocks, debris, or burning material.</li> <li>~ Evaluate necessity to send personnel in areas with limited access.</li> <li>~ Post lookouts IRPG page 7..</li> </ul>

ALL	Communications	<ul style="list-style-type: none"> <li>~ Maintain communication with aviation resources, and suppression organization.</li> <li>~ Ensure all know frequency and protocol for contacting resources.</li> <li>~ Utilize the ICS 205.</li> <li>~ Utilize human repeaters when working in dead spots.</li> </ul>
Branch 1,2	Power Utilities	<ul style="list-style-type: none"> <li>~ Notify all personnel of down electrical lines.</li> <li>~ Refer to the IRPG page 24 for Power Line Safety.</li> <li>~ Always treat downed wires as energized.</li> <li>~ Identify and avoid high tension transmission lines.</li> <li>~ Identify and avoid high pressure natural gas lines.</li> <li>~ Identify and avoid damaged gas service near structures.</li> <li>~ Be aware of utility restoration in your work area.</li> </ul>
ALL	COVID-19	<ul style="list-style-type: none"> <li>~ Maintain at least 6' distancing from others at all times</li> <li>~ Work as a unit of 1 for duration of incident</li> <li>~ Wear masks around others if 6' distancing isn't maintained</li> <li>~ Wear masks in camp at all times \ if no ones around use common sense</li> <li>~ Wash hands often and use hand sanitizer through out the day</li> <li>~ Report any illness to supervisor immediately and remove yourself from others</li> <li>~ Notify Medical Unit of any illness</li> <li>~ Do not share tools or equipment</li> <li>~ Do not touch any part of your face</li> </ul>
ALL	Illegal Grows	<ul style="list-style-type: none"> <li>~ Stay away from area</li> <li>~ Do not touch any containers</li> <li>~ Stay away from water sources</li> <li>~ Flag off area and notify Division</li> <li>~ Hazardous chemicals are most likely present</li> </ul>
All	Wildlife & Livestock	<ul style="list-style-type: none"> <li>~ Watch out for rattle snakes and scorpions</li> <li>~ Look around before you sit or step</li> <li>~ Watch for wildlife and livestock on roads</li> <li>~ Clean up all trash and debris through out the day</li> </ul>

## WILDLAND FIRE COVID-19 SCREENING TOOL

Today or in the past 24 hours, have you had any of the following symptoms<sup>1</sup>?

Symptom
Cough more than expected?
Shortness of breath or difficulty breathing?
Fever? Chills?
Muscle pain, outside your normal for firefighting?
Sore throat?
New loss of taste or smell?
Fatigue, outside your normal for firefighting?
Headache, outside your normal for firefighting?
Congestion or runny nose, outside your normal for firefighting?
Nausea or vomiting
Diarrhea
<i>* Take temperature with no-touch thermometer, if available *</i>

### Instructions for Screening

Item	What to Do
If resource has a cough that is more than expected, shortness of breath or difficulty breathing, or any other symptoms listed.	DO NOT MOBILIZE
At Entries: Consider adequate number of personnel needed for screening. Although medical personnel are ideal, screeners do not have to be medically trained. If resource has cough, shortness of breath or difficulty breathing, or any other listed symptoms including fever (over 100.4) at entry.	DO NOT ANNOUNCE Ask individual to step aside and follow the steps below.

### Steps to follow

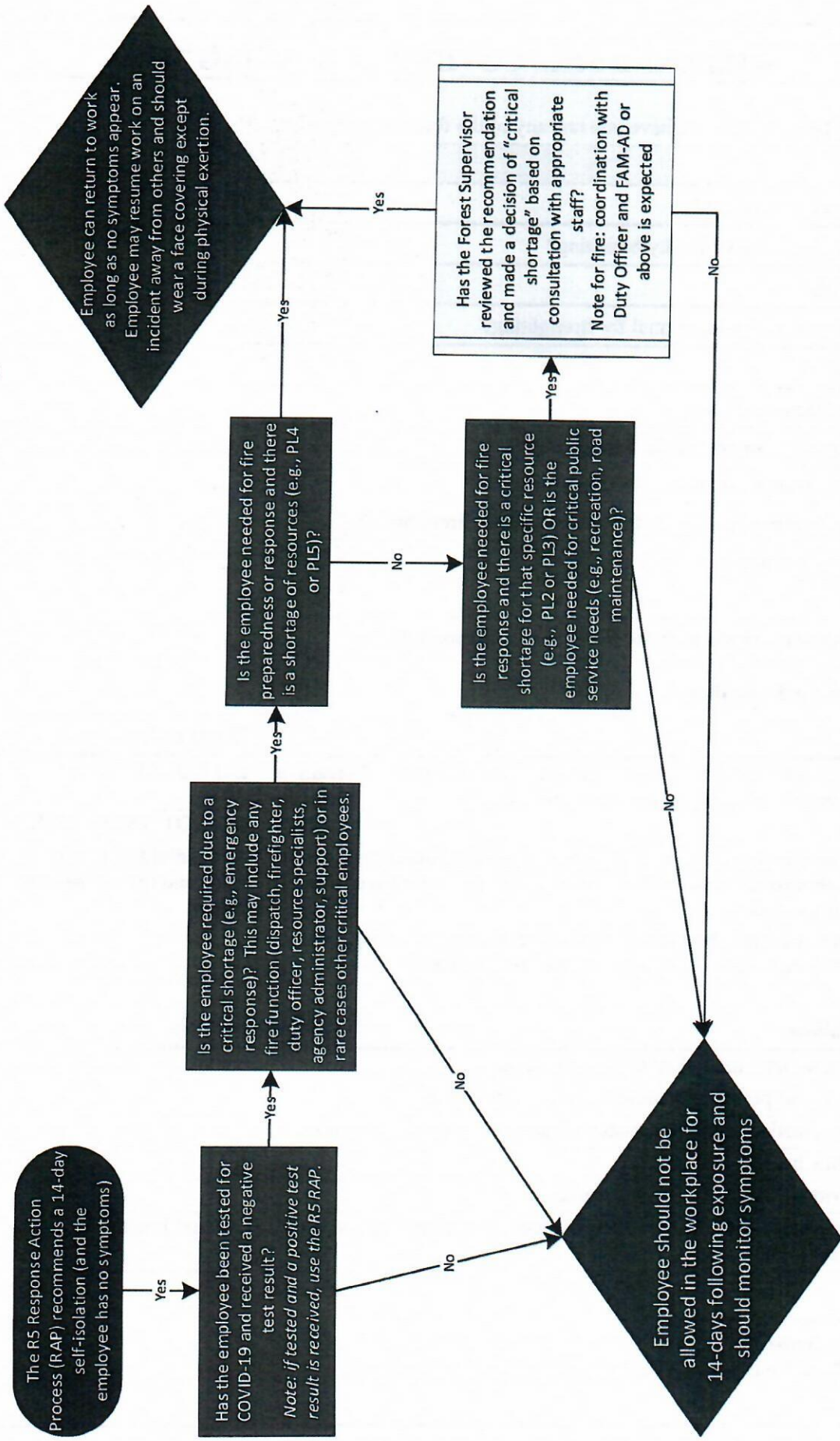
Escort symptomatic individual to isolation area.
Isolation support personnel should begin documentation.
Have symptomatic individual contact Supervisor for further direction.
Notify public health officials.
Have individual transported as appropriate.
Protect and secure any collected Personal Identifiable Information (PII) or Personal Health Information (PHI).

<sup>1</sup> Symptoms of Coronavirus

<https://www.cdc.gov/coronavirus/2019-ncov/symptoms-testing/symptoms.html>

# Region 5: COVID-19 Exposure and Emergency Responders Interpreting CDC Guidance during a Critical Shortage

August 20, 2020



This chart is NOT appropriate for anyone who has tested positive for COVID-19 or who is displaying symptoms (fever, body aches, unexplained cough, etc.) and is not recommended for any employee who has been exposed to a cluster (>2) of cases. This chart is intended as a framework, not direction. Local discretion may be needed due to availability of testing and specific circumstances of each case.  
 \* COVID-19 testing may be useful for detecting asymptomatic cases and prevalence in the population.



# Region 5 Pacific Southwest Region COVID-19 Response Action Process

August 20, 2020

## COVID-19 Response and Employee Notification

### Important Notes:

\* Recovered is defined as 10 days since symptoms first appeared AND 24 hours with no fever without the use of fever-reducing medicines AND other symptoms of COVID-19 are improving.

- Symptoms of COVID-19 include cough, shortness of breath, trouble breathing, fever, chills, repeated shaking with chills, muscle or body aches, headache, sore throat, new loss of taste or smell, congestion or runny nose, nausea or vomiting, or diarrhea.

- Contact Assessment should be conducted to help determine potential exposure of additional employees; conduct assessment for the 2-day period before illness onset or test date of sick employees, whichever came first.

- Close contact is defined as less than 6 feet, for at least 15 minutes with or without face coverings/masks. Casual contact is defined as less than 6 feet for less than 15 minutes or more than 6 feet for more than 15 minutes.

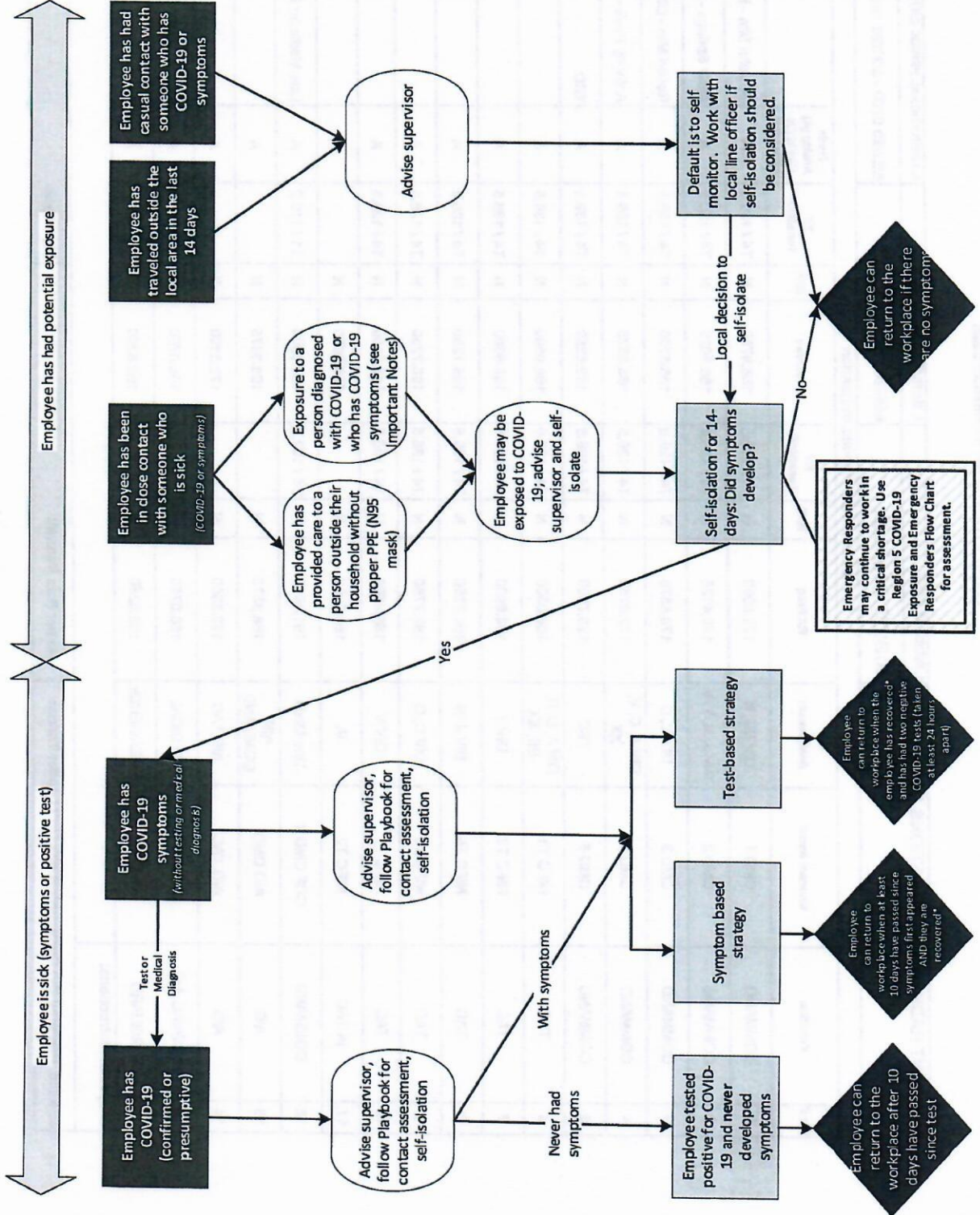
- Any employee in "close contact with someone who is sick" may return to the workplace if the sick person is tested for COVID-19 and the test is negative.

- Contact with exposed individuals is classified as secondary contact and does not typically require self-isolation unless the exposed individual tests positive.

- You do not need to self-isolate unless you meet one of the criteria identified.

- Always follow the advice of a medical provider, if given, including any need for isolation or clearance for return-to-duty.

*This document is subject to change based on CDC guidance.*



INCIDENT RADIO COMMUNICATIONS PLAN I-205				1. INCIDENT NAME		2. DATE/TIME PREPARED		3. OPERATIONAL PERIOD DATE/TIME			
				AUGUST COMPLEX		8/26/20 1700		8/27/20 0700 - 8/27/20 1900			
4. BASIC RADIO CHANNEL UTILIZATION											
Ch #	Function	Channel Name	Assignment	RX Freq	N/W	RX Tone/NAC	TX Freq	N/W	TX Tone/NAC	Mode Analog (A) Digital (D) Mixed (M)	Remarks
1	COMMAND	CMD 1	DIV SS, N	170.0000	N	T4 / 136.5	166.6750	N	T4 / 136.5	A	St. John Mtn - NIFC C4 - DIV N, O, SS
2	COMMAND	CMD 2	DIV J, N, T, V	170.4125	N	T4 / 136.5	165.9625	N	T4 / 136.5	A	Alder Springs - DIV J, R, T, V
3	COMMAND	CMD 3	DIV C, D	170.6875	N	T4 / 136.5	166.5750	N	T4 / 136.5	A	Round Mtn - DIV D
4	COMMAND	CMD 4	DIV A, C, V, XX	172.6750	N	T4 / 136.5	163.0375	N	T4 / 136.5	A	Anthony Peak - DIV A, C, XX
5	COMMAND	CMD 5	TBD	173.7500	N	T4 / 136.5	163.8250	N	T4 / 136.5	A	TBD
6	TAC	NIFC T1	DIV A, D, R, SS, XX	168.0500	N	T4 / 136.5	168.0500	N	T4 / 136.5	A	
7	TAC	NIFC T3	DIV T	168.6000	N	T4 / 136.5	168.6000	N	T4 / 136.5	A	
8	TAC	NIFC T5	DIV J, N	166.7250	N	T4 / 136.5	166.7250	N	T4 / 136.5	A	
9	TAC	NIFC T6	DIV C, O	166.7750	N	T4 / 136.5	166.7750	N	T4 / 136.5	A	
10	TAC	NIFC T7	DIV V	168.2500	N	T4 / 136.5	168.2500	N	T4 / 136.5	A	
11	IA TAC	NIFC T2	IA	169.2000	N		168.2000	N		A	
12	COMMAND	CDF CMD 7	Line Medic	151.4600	N	T8 / 103.5	159.3900	N	T1 / 110.9	A	Line Medic for DIV D & J
13	A/G	A/G CMD	AIR COMMAND	168.3375	N		168.3375	N		A	
14	A/G	A/G TAC	AIR TAC	172.3500	N		172.3500	N		A	
15	MEDEVAC A/G	CALCORD	MEDICAL	156.0750	N	156.7	156.0750	N	156.7	A	
16	AIRGUARD	GUARD	EMERGENCY	168.6250	N	CSQ	168.6250	N	110.9	A	
5. Special Instructions:											
6. I-205 Prepared By: Communications Unit Leader Trainee										Name: Rob Harendt	
										Signature:	

## MEDICAL PLAN (ICS 206 WF)

1. Incident Name			2. Operational Period					
<b>August Complex</b>			Date/Time: <b>08/27/2020</b>					
3. EMS / Ambulance Services								
Name	Location	Phone & EMS Frequency	Advanced Life Support (ALS) Yes          No					
Butte Co. EMS Willows, CA	Willows, Ca	530-934-6431	XX					
Butte Co. EMS Collusa, CA	Collusa, CA	530-458-0200	XX					
4. Air Rescue / Air Ambulance Services								
Name	Phone	Type of Aircraft & Capability						
Enlo Flight Care Chico, CA1531 Esplanade Chico, CA 95926	800-344-1863	Medical Air Ship, 1 Patient Day and Night						
REACH 7 and PHI Helicopter Yuba Co Airport1400 Sky Harbor Dr. Marysville, CA	800-338-4045	Medical Air Ship, 1 Patient Day and Night						
REACH 1524 East St. Redding, CA 96001.	800-338-4045	Medical Air Ship, 1 Patient Day and Night						
GUARD 821 Redding, CA		UH-60 HOIST, ALS, Day/Night						
H-101 CalFire Willits, CA		HOIST, ALS, Day/Night						
H-205 CalFire Chico, CA		HOIST, ALS, Day/Night						
5. Hospitals (all times estimated from incident location)								
Name & Level	GPS Datum – WGS 84 Degrees Decimal Minutes		Travel Time Air    Gnd		Phone	Helipad Yes    No		Address
Glenn Medical Center	Lat:	39 44.51'	15 min	50 min	530-934-1996	X		1133 West Sycamore St. Willows, CA 95988
	Long:	122 51.02'						
	VHF:	TX/RX 156.075						
Enloe Medical Center Level 2 Trauma	Lat:	39 44.5'	40 Min	2.0 Hour	530-895-9107	X		1531 Esplanade Chico, Ca.
	Long:	121 51.1						
	VHF:	TX/RX 156.075						
Mercy Medical Center Level 2 Trauma	Lat:	40 34.33'	45 Min	2.25 Hour	530-225-6000	X		2175 Rosaline Ave. Redding, Ca.
	Long:	122 23.26'						
	VHF:	TX/RX 156.075						
U.C. Davis Hospital Level 1 Trauma and Burn Center	Lat:	38 33.2'	45 Min	2.25 Hour	916-734-3636 Burn Unit 916-734-3790 ER	X		2315 Stockton Blvd Sacramento, Ca.
	Long:	121 27.7'						
	VHF:	TX/RX 156.075						
6. Division / Crew Emergency Pre-Plan							<i>Update and discuss with assigned resources daily.</i>	
<b>STONYFORD BASE CAMP</b>		<p><b>Point of Contact:</b> Frontline Medical Trailer  <b>EMS Responders &amp; Capability:</b> BLS/ALS  MED-L Kurt Gainer (Medic) 304-704-2970; MED-L Sam Clark (EMT) 870-867-7495 @ Medical Trailer/Yurt  <b>Helispot:</b> Stonyford Cargo  <b>Lat: / Long:</b> 39° 22.32 ' / 122° 34.04'  <b>Elevation:</b> 1,190'</p> <p>If Emergency at ICP Willows call Glenn Co. Sherriff Dept (911). Calling 911 from Base camp connects to Collusa Co.</p>						

## MEDICAL PLAN (ICS 206 WF)

STONYFORD ICP WILLOWS, CA	Point of Contact: MED-L Shanna Ellis (EMT) 318-229-6515, 318-224-0421 EMS Responders & Capability: BLS		
DIVISION ALPHA	Point of Contact: Warner Medic/ Buchan EMT EMS Responders & Capability: ALS Spike @ DP1		
DIVISION CHARLIE	Point of Contact: Klyetta Medic/Leong EMT EMS Responders & Capability: ALS		
DIVISION O/R	Point of Contact: Chacanaca Medic EMS Responders & Capability: ALS Spike @ Fairway Dip		
DIVISION V/T	Point of Contact: Moody Medic/Bostian Medic EMS Responders & Capability: ALS Spike @ Alder Springs		
7. Remote Aid Stations	Remote Camp Location(s)		
	Equipment Available on Site:	Basic Medical Supplies	
	Ambulance ETA :	Air –	Ground –
8. Prepared By (Medical Unit Leader)	9. Date/Time	10. Reviewed By (Safety Officer)	11. Date/Time
Sam Clark MEDL(t)	08/26/2020	Patrick Sheridan	08/26/2020

**Line Emergency Day/Night:**

Once any injury/illness has occurred:

- Ensure patient receives immediate First Aid and care
- Crew Supervisor to contact Division Supervisor
- Division Supervisor to contact August Communications via on Command Channel and relay information on Medical Incident Report
- **DO NOT USE THE INJURED PERSON'S NAME ON THE RADIO.**
- MEDL and Incident Safety Officer will assist with the coordination of further medical care and mode of transportation.
- Ambulance and/or air resources will be coordinated through MEDL and SOF1.

**Basecamp or ICP Emergency**

Contact MEDL and SOF1 with patient complaint/condition and location.

- Notify Medical Unit of any injury/illness being transported to Medical Unit prior to transport.
- If Emergency at ICP Willows call Glenn Co. Sherriff Dept (911). Calling 911 from Base camp connects to Collusa Co.



MOVE TO  
BACK  
COVER

## MEDICAL PLAN (ICS 206 WF)

Medical Incident Report																													
<p><b>FOR A NON-EMERGENCY INCIDENT, WORK THROUGH CHAIN OF COMMAND TO REPORT AND TRANSPORT INJURED PERSONNEL AS NECESSARY.</b></p> <p><b>FOR A MEDICAL EMERGENCY: IDENTIFY ON SCENE INCIDENT COMMANDER BY NAME AND POSITION AND ANNOUNCE "MEDICAL EMERGENCY" TO INITIATE RESPONSE FROM IMT COMMUNICATIONS/DISPATCH.</b></p>																													
<p><b>Use the following items to communicate situation to communications/dispatch.</b></p>																													
<p><b>1. CONTACT COMMUNICATIONS / DISPATCH</b> (Verify correct frequency prior to starting report)  <i>Ex: "Communications, Div. Alpha. Stand-by for Emergency Traffic."</i></p> <p><b>2. INCIDENT STATUS:</b> Provide incident summary (including number of patients) and command structure.  <i>Ex: "Communications, I have a Red priority patient, unconscious, struck by a falling tree. Requesting air ambulance to Forest Road 1 at (Lat./Long.) This will be the Trout Meadow Medical, IC is TFLD Jones. EMT Smith is providing medical care."</i></p>																													
Severity of Emergency / Transport Priority	<input type="checkbox"/> <b>RED / PRIORITY 1</b> Life or limb threatening Injury or illness. Evacuation need is <b>IMMEDIATE</b> <i>Ex: Unconscious, difficulty breathing, bleeding severely, 2° - 3° burns more than 4 palm sizes, heat stroke, disoriented.</i> <input type="checkbox"/> <b>YELLOW / PRIORITY 2</b> Serious Injury or illness. Evacuation may be <b>DELAYED</b> if necessary. <i>Ex: Significant trauma, unable to walk, 2° - 3° burns not more than 1-3 palm sizes.</i> <input type="checkbox"/> <b>GREEN / PRIORITY 3</b> Minor Injury or illness. <b>Non-Emergency transport</b> <i>Ex: Sprains, strains, minor heat-related illness.</i>																												
Nature of Injury or Illness & Mechanism of Injury	Brief Summary of Injury or Illness <i>(Ex: Unconscious, Struck by Falling Tree)</i>																												
Transport Request	Air Ambulance / Short Haul/Hoist Ground Ambulance / Other																												
Patient Location	Descriptive Location & Lat. / Long. <i>(VGS84)</i>																												
Incident Name	Geographic Name + "Medical" <i>(Ex: Trout Meadow Medical)</i>																												
On-Scene Incident Commander	Name of on-scene IC of Incident within an Incident <i>(Ex: TFLD Jones)</i>																												
Patient Care	Name of Care Provider <i>(Ex: EMT Smith)</i>																												
<p><b>3. INITIAL PATIENT ASSESSMENT:</b> Complete this section for each patient as applicable (start with the most severe patient)            Patient Assessment: See IRPG PAGE 106</p>																													
Treatment:																													
<p><b>4. TRANSPORT PLAN:</b></p> <p>Evacuation Location (if different): <i>(Descriptive Location (drop point, intersection, etc.) or Lat. / Long.)</i> Patient's ETA to Evacuation Location:</p>																													
Helispot / Extraction Site Size and Hazards:																													
<p><b>5. ADDITIONAL RESOURCES / EQUIPMENT NEEDS:</b></p>																													
<p><i>Example: Paramedic/EMT, Crews, Immobilization Devices, AED, Oxygen, Trauma Bag, IV/Fluid(s), Splints, Rope rescue, Wheeled litter, HAZMAT, Extrication</i></p>																													
<p><b>6. COMMUNICATIONS:</b> Identify State Air/Ground EMS Frequencies and Hospital Contacts as applicable</p> <table border="1" style="width: 100%; border-collapse: collapse;"> <thead> <tr> <th style="width: 15%;">Function</th> <th style="width: 20%;">Channel Name/Number</th> <th style="width: 20%;">Receive (RX)</th> <th style="width: 20%;">Tone/NAC *</th> <th style="width: 20%;">Transmit (TX)</th> <th style="width: 20%;">Tone/NAC *</th> </tr> </thead> <tbody> <tr> <td>COMMAND</td> <td></td> <td></td> <td></td> <td></td> <td></td> </tr> <tr> <td>AIR-TO-GRND</td> <td></td> <td></td> <td></td> <td></td> <td></td> </tr> <tr> <td>TACTICAL</td> <td></td> <td></td> <td></td> <td></td> <td></td> </tr> </tbody> </table>						Function	Channel Name/Number	Receive (RX)	Tone/NAC *	Transmit (TX)	Tone/NAC *	COMMAND						AIR-TO-GRND						TACTICAL					
Function	Channel Name/Number	Receive (RX)	Tone/NAC *	Transmit (TX)	Tone/NAC *																								
COMMAND																													
AIR-TO-GRND																													
TACTICAL																													
<p><b>7. CONTINGENCY: Considerations:</b> If primary options fail, what actions can be implemented in conjunction with primary evacuation method? Be thinking ahead.</p>																													
<p><b>8. ADDITIONAL INFORMATION:</b> Updates/Changes, etc.</p>																													
<p><b>REMEMBER:</b> Confirm ETA's of resources ordered. Act according to your level of training. Be Alert. Keep Calm. Think Clearly. Act Decisively.</p>																													

# MNF AUGUST COMPLEX

## COVID MITIGATION PLAN

**Check-In:** All personnel will be required to complete COVID-19 questionnaire and undergo thermal screening.

**Briefing:** It is requested that only module leaders and trainees attend briefings as appropriate.

**ICP:** All personnel are to maintain physical distancing and required to wear a face covering while in ICP / Base Camp(s).

**Med Plan:** Refer to the COVID-19 Operational Flowchart and the ICS 206 in the IAP for more information.

**Management:** A qualified Medical Unit Leader will be assigned as an incident COVID Mitigation Manager to ensure established measures are followed.

Contact is MEDL Shanna Ellis -318-229-6515 or 318-224-0421

Any Personnel that fail thermal screening will be rechecked manually by medical personnel in the Medical Unit.

Any personnel that become symptomatic will be evaluated by Medical Personnel and appropriate actions taken per CDC and Federal guidelines.

# FINANCE

Send all finance documentation (SIGNED CTR/shift ticket/AD forms/inspections/etc) to:

2020.augustcomplex.finance@firenet.gov



When submitting a finance document to finance please use the following format in your email subject line:

**Resource order number\_Last name, First name\_Document type\_Date**

**\*Casual Hires add "AD" after Date\***

Examples:

O-2\_Duck, Daffy\_CTR\_0821\_AD

O-4\_Bear, Smokey\_CTR\_0821

E-34\_Bob's Dozer\_ST\_0821

C-3\_Smoky Hot Shots\_CTR\_0821

*For all other Issues/questions use the email above. Be specific in the subject line to ensure your email is directed to the appropriate finance contact.*

Document Type	Abbreviation
Crew Time Report SF-261	CTR
Emergency Equipment Shift Ticket OF-297	ST
Resource Order	RO
All Inspections	Inspection
All agreements	Agreement
Casual Hire Form	CH
Invoice	INV
General Message ICS-213	GM
Miscellaneous	MISC

# Stay Connected

2020.augustcomplex@firenet.gov



Scan the QR code to view the briefings on the Mendocino National Forest Facebook



## Human Resource Message



**It was**  
**CHARACTER**  
that got us out of bed,  
**COMMITMENT**  
that moved us into action, &  
**DISCIPLINE**  
that enabled us to follow through  
--Zig Ziglar

**Your Human Resource Specialist (HRSP) is located at the ICP in Willows. Email or give her a call if you would like to talk, or have any concerns or questions.**

**Linda Overton**  
**707-373-7631**  
**[linda.overton@usda.gov](mailto:linda.overton@usda.gov)**

## August Complex – Training Message

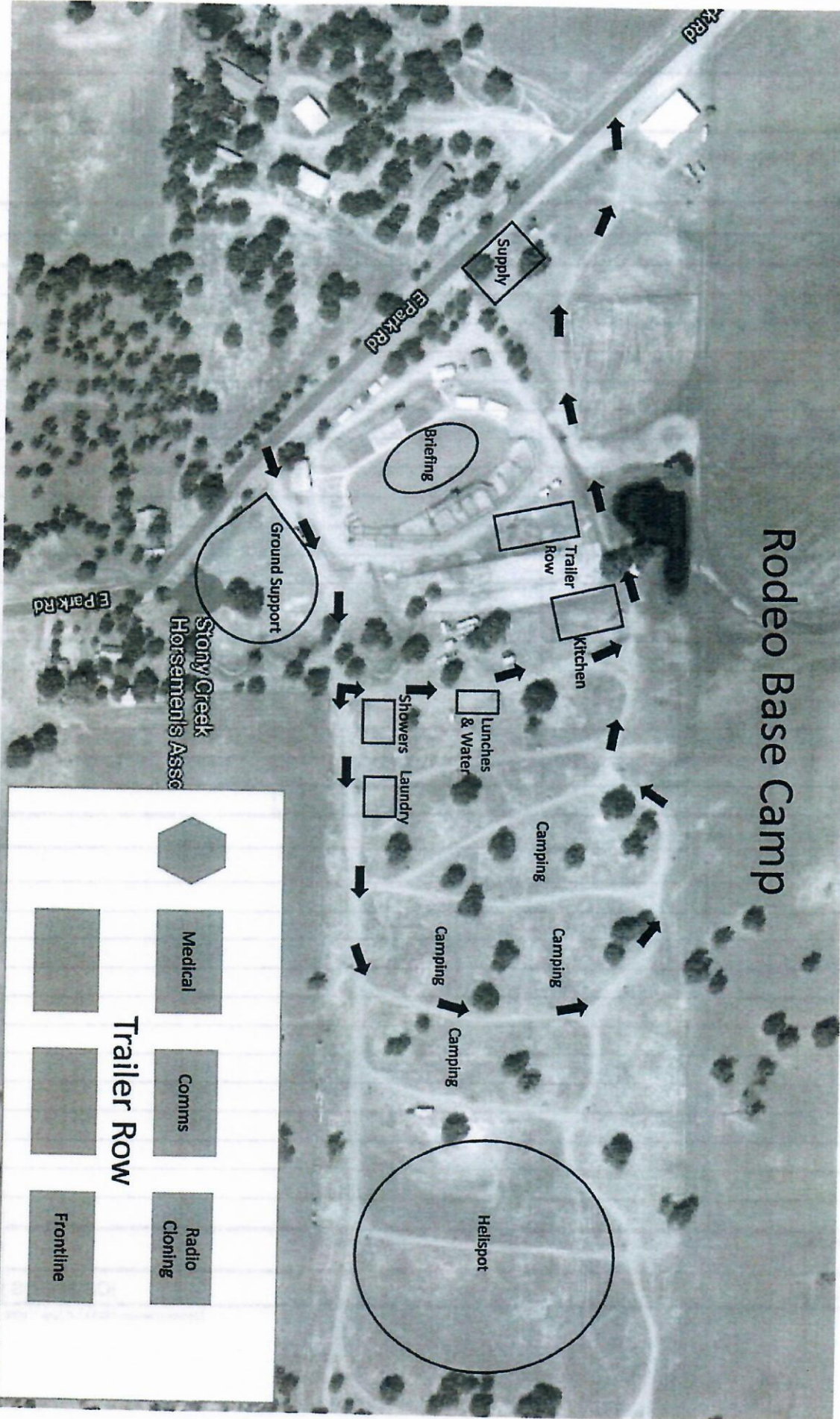
A Training Specialist is assigned to this incident and will be performing most duties virtually.








Information about how to check in virtually will be provided in tomorrow's IAP. The process will only take a few minutes to complete.

For training related questions, please contact Debra Burgos, Training Specialist at 404-987-3256 or via email at [debra.burgos@usda.gov](mailto:debra.burgos@usda.gov).

Thank you!

# Rodeo Base Camp



			
<b>Trailer Row</b>			
			
<b>Frontline</b>			





