

August Complex

Incident Action Plan

CA-MNF-000753 (P5NFP420 0508) FS
CA-MNF-000753 (PWNGW4 1325) DOI

August 29, 2020

0700-1900



Daily Schedule – Pacific Daylight Savings Time

0700 – Operational Briefing – Stonyford
1000 – C&G – Teams Virtual
1500 Pre-Planning Meeting - ICP
1600 – Planning AP - ICP
1800 – IAP Parts Due

Map QR Code



IAP QR Code



INCIDENT OBJECTIVES (ICS 202)

1. Incident Name: August Complex	2. Operational Period: Date From: 08-29-2020 Date To: 08-29-2020 Time From: 0700 Time To: 1900
3. Objective(s):	
<u>Leaders Intent:</u> Suppress the August Complex fires using management strategies and tactics that provide the highest likelihood of success given risks to responders.	
<u>Management Objectives:</u>	
<ol style="list-style-type: none"> 1. Ensure the safety and wellbeing of emergency responders and the public by making timely risk-informed decisions that align with Agency values. 2. Protect natural and cultural resources of Federal, State, and Local interest by engaging agency resource advisors, partners and community stakeholders in effective communication and planning. 3. Develop and implement a strategic plan for the Hopkins Wilderness fires in collaboration with the Shasta Trinity and Six Rivers National Forest 4. Foster good relationships with local cooperators, stakeholders and the public by providing coordinated, accurate and timely information. 5. Keep costs commensurate with values at risk by working with the local unit and coordinating with the Agency Administrator and Incident Business Advisor. 6. Coordinate with the Forest's COVID-19 Advisor to ensure COVID mitigation measures are in alignment with Agency expectations and adapt as necessary to changing conditions. 	
<u>Control Objectives</u>	
<ul style="list-style-type: none"> • Hold the Glade and Tatham Fires south of the M2 road and Riley Ridge to Hull Canyon Road to the 302 Road. Coordinate closely with Crane Mills resources. • Hold the Hull and Doe fires east of the M1 and north of the M3 roads, Brushy Ridge and Horse Ridge to M1 Road and west of the 306 Road. • Construct and improve line along the Doane Ridge working closely with Resource Advisors in Black Butte Wild and Scenic River Corridor. 	
4. Operational Period Command Emphasis:	
See attached Weather Forecast	
General Situational Awareness:	
See attached Safety Message	
5. Site Safety Plan Required? Yes <input type="checkbox"/> No <input type="checkbox"/>	
Approved Site Safety Plan(s) Located at:	
6. Incident Action Plan (the items checked below are included in this Incident Action Plan):	
<input checked="" type="checkbox"/> ICS 203 <input checked="" type="checkbox"/> Safety Message <input checked="" type="checkbox"/> ICS 204 <input checked="" type="checkbox"/> Weather Forecast <input checked="" type="checkbox"/> ICS 205 <input checked="" type="checkbox"/> Fire Behavior <input checked="" type="checkbox"/> ICS 206 <input checked="" type="checkbox"/> Fire COVID-19 Screening <input checked="" type="checkbox"/> ICS 220 <input type="checkbox"/>	<u>Other Attachments:</u> <input type="checkbox"/> _____ <input type="checkbox"/> _____ <input type="checkbox"/> _____ <input type="checkbox"/> _____
7. Prepared by: Name: _____	Position/Title: _____
Signature: _____	
8. Approved by Incident Commander:	
Name: Mark Morales, IC	
Signature:	
ICS 202	IAP Page <u> 2 </u>
Date/Time: <u> 8/29/2020 </u>	

ORGANIZATION ASSIGNMENT LIST (ICS 203)

1. Incident Name: August Complex		2. Operational Period: Date From: 08-29-2020 Date To: 08-29-2020 Time From: 0700 Time To: 1900		
3. Incident Commander(s)/ Agency Incident Coordinator and Command Staff: (include location)		7. Operations Section:		
IC	Mark Morales; Andy Baker (T)	Chief	Paul Reynolds	Dwight Snow
Safety Officer	Brian Beisel; Pat Sheridan; Paul Churchill (T)	Planning Operations	Jon Wallace	Derrick Moore (T)
Public Info. Officer	Williams; Krasko; Grandy; Nedlo (T)	Strategic Operations	Tom Ledbetter	Anthony DiMaggio (T)
Liaison Officer	Gaston; Owenby; Hays	Branch I		
4. Agency/Organization Representatives:		Branch Director	Mike Brunson	
Agency/Organization	Name	Division/Group	A	Carpenter / Krage (T)
USFS	Ann Carlson Christine Hill / Frank Aebly	Division/Group	C	Carpenter / Hoyle (T)
FMO	Curtis Coots / Terry Nickerson	Division/Group	D	Jason Packard / Wesley McKinney (T)
READ	Nourmohamadian	Division/Group		
Air Resource Advisor	Margaret Key	Division/Group		
Agency Rep Cal-Fire	C. Thompson (TGU Unit Chief)	Branch II		
BLM	Ray Ucha	Branch Director	Michael Womack	Kerry Clark (T)
5. Planning Section:		Division/Group	T	Cones / Troisi (T) / Alves (T)
Chief	James R. Anderson; Tom Lowry; Jeff Adams (T); Greg Sanders (T)	Division/Group	V	Doig / Moor (T)
Resources Unit	Joe Robles, Sue Wilder, Steverson Moffat (T)	Division/Group	Contingency	Malcolm/Smith(T)/Vincent(T)
Demobilization Unit	Henry Hickerson	Branch III		
Situation Unit	Scott Hamlet	Branch Director	Dale Shippelhoue	
Fire Behavior Analyst	Michael Housh	Division/Group	J	Shippelhoue
GIS Specialist	Mannin Dodd (Virtual); Geoff Holden (Remote)	Division/Group	N	Wood / Sinkovitz (T)
Information Technology	Leduc; Wyckoff (T); Shirley (T)	Branch IV		
Training Specialist	Debra Burgos	Branch Director	Joe Tieso	
Strategic Ops Planner	Ben Rowland	Division/Group	O	Banks / Reyes (T)
6. Logistics Section:		Division/Group	R	Marcks/Springstead(T)
Chief	Chris Alford; Jane Arteaga (T)	Branch V		
Deputy		Branch Director	Heard / Nagle (T)	
Support Branch		Division/Group	Jessica Vincent (T)	
Director		Air Ops Branch		
Supply Unit	Sandy Rhodes	Air Ops Branch Dir.	Michael Mowery	Michael O'Leary (T)
Facilities Unit	Lewis Brostrom	Air Support	Bob Yeager	
Ground Support Unit	Randy Chapin	8. Finance/Administration Section:		
Service Branch		Chief	Karen Patterson; Billy Zamora	
Director		Deputy		
Communications Unit	Mark Spann	Time Unit	Bryant; Blackwell; McDonald (Virtual)	
Medical Unit	Ellis; Clark; Chapin	Procurement Unit	Sherry Helmick; Kelvin Jackson (T)	
Security	Cooley; Clemons (T)	Comp/Claims Unit	Donna Rogers	
9. Prepared by: Name: Joe Robles		Cost Unit		
Position/Title: RESL		Signature: /s/ Joe Robles		
ICS 203	IAP Page <u>3</u>	Date/Time: 08/28/2020 1700		



Fire Weather Forecast



FORECAST NO: 9
PREDICTION FOR: 24 Hr Shift
SHIFT DATE: Saturday 8/29/2020
TIME AND DATE ISSUED: 8/28/2020 1800 PDT

INCIDENT: August Complex
UNIT: Mendocino NF
SIGNED: Chuck Redman
 Incident Meteorologist (IMET)

Discussion: *HOT AND DRY CONDITIONS TO CONTINUE THROUGH THE WEEKEND*****

Warm and dry conditions along with generally light wind will continue through the weekend. An approaching cold front pushes into the Pacific Northwest today and then stalls out near the California/Oregon border region Sunday and weakens. This region could see another brief shot of North to Northeast wind early Monday morning but then shift westerly by the afternoon. Otherwise, light winds aloft will be over the area. Therefore, generally terrain driven winds are expected in the lower drainages.

WEATHER FORECAST FOR TODAY:

SKY/WEATHER: Mostly sunny.
Max Temperature: Mid-80s higher elevation, except 95 to 100 lower valleys.
Min RH: 18 to 28 percent.

-20 ft Level WINDS:

Lower Valleys/Lower Slopes Down drainage wind in the morning up to 10 mph, becoming up drainage by noon.
Upper Ridges: East 10 mph shifting South to Southwest around 10 mph by early afternoon. Afternoon gusts to 15 mph.
TRANSPORT WINDS: Southwest to 10 mph. **MIXING HEIGHT:** 12 KFT AGL

TONIGHT:

SKY/WEATHER: Clear.
Min Temperature: 65 to 75.
Max RH: 30 to 40 percent.

WINDS:

-20 ft Level-

Valleys/Lower Slopes: Down drainage to 10 mph. Gusts to 15 mph in the Thomes Creek area,
Upper Ridges: East to Northeast to 10 mph after midnight.

SUNDAY:

SKY/WEATHER: Mostly sunny.
Max Temperature: 82 to 88 higher elevation, except 95 to 100 lower valleys
Min RH: XX to 25 percent.

WINDS:

-20 ft Level- Lower Valleys Down drainage wind in the morning around 10 mph, becoming up drainage by noon.
Upper Ridges: Winds becoming South to Southwest 10 mph.
TRANSPORT WINDS: South to Southeast around 10 mph. **MIX. HEIGHT** 11 KFT AGL.

Mendocino



Stonyford



Monkey Rock

FIRE BEHAVIOR FORECAST

FORECAST NUMBER: #11		TYPE OF FIRE: Wildfire
FIRE NAME: August Complex		OPERATIONAL PERIOD: Saturday 29 August 2020
DATE ISSUED: Friday 28 August 2020		TIME ISSUED: 1800
UNIT:	CA-MNF	<i>Michael W. Housh</i>
Prepared By:	Michael W. Housh/FBAN	

INPUTS

WEATHER SUMMARY:

TODAY (Friday): See Fire Weather Forecast.

WEATHER: Warm and dry conditions with generally light wind

Lower Valleys/Slopes: **MAX Temp:** 90-95 degrees **MIN Rh:** 18-28% **WIND:** Down drainage wind in the morning up to 10 mph, becoming up drainage by noon.

Upper Ridges: **MAX Temp:** 80-85 degrees **MIN Rh:** 18-28% **WIND:** East 10 mph shifting South to Southwest around 10 mph by early afternoon. Afternoon gusts to 15 mph.

LAL: 1 **CWR:** 0%

MIXING HEIGHT 12,000 ft AGL **TRANSPORT WINDS** SW@ 10 mph..

GENERAL FUEL ASSUMPTIONS: It has been over 100 days since much of the fire area has received over 0.10" of precipitation and all three groups are extremely dry and are burning readily. 10 Hr fuel moistures in the fire area were observed at 5-8% on August 28th.

OUTPUTS

FIRE BEHAVIOR

GENERAL

Fuels continue to dry due to lack of precipitation combined with low humidity's (15-25%) yesterday. Smoke over the fire area is impacting fire spread and behavior, but the potential is still there for rapid fire movement and moderate/extreme fire behavior if the airshed clears out. Most of the fire spread is anticipated to be terrain driven except on exposed ridgetops.

Vegetation Type	Fuel Model	Fire Behavior Potential			
		ROS (ch\hr)	FL (ft)	PIG (%)	Spot Dist (mi)
Grass	GR2	45-50	5-6	76	0.25
Grass/Shrub	GS2	30-33	6-7	76	0.25
Shrub	SH7	49-52	15-16	76	0.25
Timber	TL8	7-8	3-4	76	0.25

SPECIFIC:

>**Branch I:** Anticipate continued Fire spread up the Willow Creek drainage towards the M2 Road closing the gap between the Doe and Glade Fires. These fires are likely to join during today/tomorrows operational period. Tatham fire is expected to continue to spread upslope/updrainage and move towards the Doe fire.

>**Branch II:** Active upslope fire spread on the Western edge of the Doe Fire. The pocket of unburned fuel in the 311 Road area will continue to fill in as the fire moves upslope along Bear Wallow Ridge.

>**Branch III:** Anticipate continued upslope fire spread in the Dutch Oven Creek/Deaty Ridge Area.

>**Branch IV:** Hull Fire, expect continued fire movement upslope to the NE along Panther Ridge towards Lee Logan Camp. Likely that the Hull and Doe fires will burn together during today/tomorrows operational period.

AIR OPERATIONS:

Smoke will continue to impact air operations.

SAFETY

Fire behavior has been consistent for the last few days, but the hazards still exist. Do not get complacent and let your guard down. Maintain LCES.



Air Resource Advisor

Margaret Key

Uses air monitors, computer modeling, and information from the FBAN and IMET to forecast smoke conditions for surrounding communities. Daily smoke forecasts can be found at <https://wildlandfiresmoke.net/outlooks>

Can also forecast surface smoke at a location of concern, like where smoke might cross a highway and create visibility issues.

Work with air pollution control agencies to provide information about expected smoke levels, and communicate efforts the firefighters are taking to minimize the amount of smoke – such as trying to keep the fire footprint low.

Working with PIO, provide information to the public about health effects of smoke, ways to minimize smoke exposure, and who is especially at risk for health impacts from smoke. Can also provide information about interaction between wildfire smoke and Covid.

To see current air quality levels or to see where our smoke going: <https://fire.airnow.gov/>

Contact Information: aramargaretkey@gmail.com; cell phone: 434.221.9339

Division/Group Assignment List (ICS 204)

Incident Name August Complex				Branch I		Division/Group A	
Operational Period 0700 - 1900				Date 08/29/2020			
Operations Personnel							
Operations Chief		Jon Wallace / Paul Reynolds / Derrick Moore (T)		Division/Group Supervisor		Kendall Carpenter / Patrick Krage (T)	
Branch Director		Mike Brunson		Air Attack Supervisor No.			
Resources Assigned this Period							
Strike Team/Task Force/ Resource Designator		LWD	Leader	# Persons	Drop Off PT./Time	Pick Up PT./Time	
O-299	TFLD	9/1	Dave Bakas	1			
O-128	TFLD(T)	9/5	Angel Avila	1			
C-9	HC1 Eldorado	8/31	Ben Strahan	20			
E-22	ENG3 Black Range	9/1	Chris Olguin	3			
E-34	ENG3 Fire Trax 357	9/1	Brad Martin	3			
E-182	ENG3 DS Fire 14	9/8	Robert Degnall	3			
E-93	ENG4 JD Forestry 2	8/30	Alberto Garcia	3			
E-31	ENG5 Alaska Fire 51	8/30	Brian Terry	3			
E-17	DO22 Humphrey	9/2	Ron Humphrey	2			
E-175	DO22 Jake Lovato Trucking	9/12	Jacob Lovato	1			
E-3	MAST1 Diversified Resources	9/4	Scott Valesco	1			
E-373	MAST Allen's Water Tender Service	9/12	Christy Price				
E-50	WTS2 Lenihan 2	8/31	Fred Lenihan	1			
E-271	WT2 Dustbusters LLC	9/11	Michael Edwards	1			
O-78	SOF2	9/2	Larry Connell	1		Anthony Peak Lookout	
O-232	SOFR	9/5	Jeff Kerr	1		Anthony Peak Lookout	
O-69	READ	8/30	Lowell Thomas	1			
O-421	READ	9/4	Derek Esenbach	1			
O-100	REAF	9/1	Radoslaw Gleboki	1			
O-99992	READ	8/31	Robert Weaver	1			
O-321	EMTP	9/9	Warner	1			
O-318	EMTB	9/9	Buchan	1			
Control Operations/Work Assignments:							
<ul style="list-style-type: none"> • Continue improving line and firing. • Conduct tactical burnouts according to Division Supervisor in advance of Glade Fire approaching line. • Construct and improve dozer line along the north side of Blue Slide Creek from FH7 road southwest towards Black Butte River. Implement hand line construction within river buffer. 							
Special Instructions:							
Use caution around snags and flag as needed for safety; Use caution when driving on roadways and on the fireline; Backhaul excessive equipment and trash. Follow all COVID protocols and precautions; READS will call DIVS when entering.							
Division/Group Communication Summary							
Function		Channel Name	RX Frequency N/W	RX Tone/NAC	TX Frequency N/W	TX Tone/NAC	Mode
COMMAND		CMD 4	172.6750	T4 / 136.5	163.0375	T4 / 136.5	
TACTICAL		NIFC T1	168.0500	T4 / 136.5	168.0500	T4 / 136.5	
AIR TO GROUND		A/G TAC	172.3500		172.3500		
Prepared by RESL(T) Steverson Moffat				Approved by PSC1(T) Greg Sanders		Date 08/28/20	Time 2000

Division/Group Assignment List (ICS 204)

Incident Name August Complex			Branch I		Division/Group C	
Operational Period 0700 - 1900			Date 08/29/2020			
Operations Personnel						
Operations Chief		Jon Wallace / Paul Reynolds / Derrick Moore (T)		Division/Group Supervisor		Kendall Carpenter / Robert Hoyle (T)
Branch Director		Mike Brunson		Air Attack Supervisor No.		
Resources Assigned this Period						
Strike Team/Task Force/ Resource Designator	LWD	Leader	# Persons	Drop Off PT./Time	Pick Up PT./Time	
O-301 TFLD	9/9	Ryan Shannahan	1			
C-11 Mad River	8/30	Tad Hair	20			
O-235 FMOD Pacific Ridgeline	9/6	Gabriel Satela	2			
O-236 FMOD Tacoma Fallers	9/7	Tacoma Manuel	2			
E-44 ENG3 Allied	8/29	Wiley Volz	3			
E-12 ENG3 Rogue Valley	8/30	Stuart Johnson	3			
E-24 ENG3 Wildfire Support 316	9/1	Ryan Champion	3			
E-46 ENG3 PNF 32	8/31	James Bollanger	5			
E-45 ENG3 PNF 34	8/31	Damon Long	5			
E-13 ENG6 Smokin Ridge 311	9/3	Fred Deffer	4			
E-14 ENG6 Rocky Point	9/2	Kevin Trapp	3			
ENG6 MNF Utility 352	9/2	Everett Freeman	3			
WT MNF 58	9/2	Fred Burrows	2			
E-52 WT Dietz 106	8/31	Richard McGowan	2			
E-21 WTS2 Partridge Const 14	9/4	Warren Partridge	1			
E-47 DO22 Let R Buck	8/31	Bob Trent	2			
E-48 DO22 Wycoff	8/29	Billy Wycoff	2			
E-271 DO22 Batte Enterprises	9/10	Matt Lasiter	1			
E-4 MAST Zeb's Tree Service	9/4	Matt Bale	2			
O-78 SOF2	9/2	Larry Connell	1		Anthony Peak Lookout	
O-232 SOFR	9/5	Jeff Kerr	1		Anthony Peak Lookout	
O-09992 READ	8/31	Jackie Beidl	1			
O-329 EMTP	9/9	Klytta	1			
O-310 EMTB	9/9	Leong	1			
Control Ops/Assignments: -Continue holding M2 road. Conduct tactical burnouts to stay ahead of main fire. Coordinate closely with Crane Mills resources.						
Special Instructions: Use caution around snags and flag as needed for safety. Use caution when driving on roadways and on the fireline. Backhaul excessive equipment and trash. Follow all COVID protocols and precautions. READS will call DIVS when entering.						
Division/Group Communication Summary						
Function	Channel Name	RX Frequency N/W	RX Tone/NAC	TX Frequency N/W	TX Tone/NAC	Mode
COMMAND	CMD 4	172.6750	T4 / 136.5	163.0375	T4 / 136.5	
TACTICAL	NIFC T6	166.7750	T4 / 136.5	166.7750	T4 / 136.5	
AIR TO GROUND	A/G TAC	172.3500		172.3500		
Prepared by RESL(T) Stevenson Moffat		Approved by PSC1(T) Greg Sanders			Date 08/28/20	Time 2000

Division/Group Assignment List (ICS 204)

Incident Name August Complex	Branch I	Division/Group D
---	---------------------------	-----------------------------------

Operational Period 0700 - 1900	Date 08/29/2020
---------------------------------------	------------------------

Operations Personnel			
Operations Chief	Jon Wallace / Paul Reynolds / Derrick Moore (T)	Division/Group Supervisor	Jason Packard / W. McKinney (T) / F. Alves (T)
Branch Director	Mike Brunson	Air Attack Supervisor No.	

Resources Assigned this Period					
Strike Team/Task Force/ Resource Designator	LWD	Leader	Number Persons	Drop Off PT./Time	Pick Up PT./Time
O-337 TFLD(T)	9/12	Bradly Taylor	1		
C-64 IHC Big Bear	9/11	Howard Deets	20		
C-33 HC2 OC 21	9/10	John Cox	20		
C-93 HC2 OC 22	9/8	Rex Sundstrom	20		
E-193 ENG3 Brush 51	9/8	Phil Felder	4		
E-195 ENG6 DB Jet	9/8	Robert Chandler	3		
E-94 ENG6 Big State	8/30	Israel Silas	3		
E-15 ENG6 Texas Fire Service 55	9/3	Carlos Magana	3		
E-192 ENG6 Arkansas 631	9/12	Kory Garrie	3		
E-173 DOZ2 Tough Company 02	9/8	Jeremy Todd	2		
E-172 DOZ2 D17 Ben Trucking	8/29	Arnie Torres	1		
E-270 DOZ2 CM Dozer	9/9	Steven Edsall	1		
E-18 DOZ2 Rosevear LLC	9/8	Carl Steinmann	2		
O-30 HEQB	9/3	Ron Rockis	1		
O-43 HEQB	9/3	Phil Oosahwe	1		
O-342 STEQ	9/3	Trent Duncan	1		
O-232 SOFR	9/5	S. Counts	1		
O-129 REAF	8/31	Sarah Chamberlin	1		

- Control Operations/Work Assignments:**
- Hold and improve line along west flank of the fire.
 - Coordinate closely with Crane Mills resources to protect private landholdings.

Special Instructions

Use caution around snags and flag as needed for safety.
 Use caution when driving on roadways and on the fire line.
 Follow all COVID protocols and precautions.
 READS will call DIVS when entering.

Division/Group Communication Summary						
Function	Channel Name	RX Frequency N/W	RX Tone/NAC	TX Frequency N/W	TX Tone/NAC	Mode
COMMAND	CMD 3	170.6875	T4 / 136.5	166.5750	T4 / 136.5	
TACTICAL	NIFC T1	168.0500	T4 / 136.5	168.0500	T4 / 136.5	
AIR TO GROUND	A/G TAC	172.3500		172.3500		

Prepared by RESL(T) Steverson Moffat	Approved by PSC1(T) Greg Sanders	Date 08/28/20	Time 2000
--------------------------------------	----------------------------------	---------------	-----------

Division/Group Assignment List (ICS 204)

Incident Name August Complex		Branch II	Division/Group T			
Operational Period 0700 - 1900		Date 08/29/2020				
Operations Personnel						
Operations Chief	Jon Wallace / Paul Reynolds / Derrick Moore (T)		Division/Group Supervisor	Scott Cones / George Troisi (T)		
Branch Director	Michael Womack / Kerry Clark (T)		Air Attack Supervisor No.			
Resources Assigned this Period						
Strike Team/Task Force/ Resource Designator	LWD	Leader	Number Persons	Drop Off PT./Time	Pick Up PT./Time	
O-150 TFLD (T)	9/4	Zach Boness	1			
C-8 HC2 Franco 8	8/31	Juan Parras	20			
E-187 ENG3 Outback Fire	9/8	Lance Wolleboek	4			
E-35 ENG3 Elephant Head 325	8/31	Chris Authics	3			
E-39 ENG3 Shiloh 215	9/1	Ron Thalacker	3			
E-36 ENG3 Black Range 2348	9/1	Brandon Shepperd	3			
E-26 ENG3 San Juan 31	9/1	Chad Vecellio	3			
E-128 ENG4 Flashback Fire 26	9/2	Richard Orosco	2			
E-127 ENG4 Rattlesnake Ridge 09	9/5	Jermaine Allen	3			
E-180 ENG6 Rocky Point 116	8/30	KC Frye	3			
E-129 ENG6 JD Forestry	8/29	Mario Colin	3			
E-12 ENG6 Clearwater	9/3	Paul Shultz	3			
E-16 ENG6 Criddle 60	9/3	Paul Criddle	3			
E-130 ENG6 Alpine Wildfire 8	9/5	Jake Heckathorn	3			
E-11 ENG6 Sundance	9/3	Matt Abbe	3			
O-219 SOF2	9/7	Troy Floyd	1			
O-149 SOFR (T)	9/4	Lem Johnson	1			
O-09993 READ	8/31	Robert Weaver	1			
O-324 EMTP	9/10	Moody	1			
Control Operations/Work Assignments:						
<ul style="list-style-type: none"> • Implement defensive firing operations around Lee Logan Camp as necessary. • Hold Hull Fire east of M1 road. • Conduct tactical burnouts along M1 road if fire crosses private land north of Red Rock. 						
Special Instructions						
READS will call DIVS when entering.						
Division/Group Communication Summary						
Function	Channel Name	RX Frequency N/W	RX Tone/NAC	TX Frequency N/W	TX Tone/NAC	Mode
COMMAND	CMD 2	170.4125	T4 / 136.5	165.9625	T4 / 136.5	
TACTICAL	NIFC T3	168.6000	T4 / 136.5	168.6000	T4 / 136.5	
AIR TO GROUND	A/G TAC	172.3500		172.3500		
Prepared by RESL(T) Steverson Moffat			Approved by PSC1(T) Greg Sanders		Date 08/28/20	Time 2000

Division/Group Assignment List (ICS 204)

Incident Name August Complex			Branch II		Division/Group V	
Operational Period 0700 - 1900			Date 08/29/2020			
Operations Personnel						
Operations Chief		Jon Wallace / Paul Reynolds / Derrick Moore (T)		Division/Group Supervisor		Vic Doig / Colten Moor (T)
Branch Director		Michael Womack / Kerry Clark (T)		Air Attack Supervisor No.		
Resources Assigned this Period						
Strike Team/Task Force/ Resource Designator		LWD	Leader	Number Persons	Drop Off PT./Time	Pick Up PT./Time
O-67 TFLD		8/31	Brendon McNeil	1		
O-360 TFLD		9/12	Dale Woitas	1		
A1 California Smokejumpers		9/6	Matt Weston	7		
E-179 ENG3 Treasure Valley 3491		8/30	John Hovey	3		
E-38 ENG3 Chihuahua 3063		8/31	John Badjer	3		
E-28 ENG3 Mike's Water 18		8/30	Mike Sturm	3		
E-37 ENG3 J3 Contracting 26		8/31	Ronnie Hernandez	3		
E-200 ENG4 Castle Mountain		9/11	James Huckelba	3		
E-185 ENG6 Windswept 604		9/8	Chris Schiuefelbein	3		
E-113 WTS2 Weber Fire 266		9/7	Kyle Braegger	1		
E-116 WTS2 Rocky Point 101		9/8	Shawn Shelevy	1		
E-273 DOZ2 STF 52		9/12	Craig Martin	1		
E-262 WTS1		9/8	Dave Pierce	1		
O-219 SOF2		9/7	Troy Floyd	1		
O-149 SOFR (T)		9/5	Lem Johnson	1		
O-69 READ		8/30	Lowell Thomas	1		
O-100 REAF		9/1	Radoslaw Gleboki	1		
O-421 READ		9/12	Derek Esenbach	1		
O-09992 READ		8/31	Robert Weaver	1		
O-324 EMTP		9/10	Moody	1		
Control Operations/Work Assignments:						
<ul style="list-style-type: none"> • Construct and improve dozer line from M1 road northeast along Doane Ridge towards Black Butte River. Implement hand line construction within river buffer. • Implement defensive firing operations around Keeran Camp and Garnett Camp as necessary if fire reaches top of Rock Basin Ridge. 						
Special Instructions:						
Use caution around snags and flag as needed for safety; use caution when driving on roadways and on the fire line; backhaul excessive equipment and trash. Follow all COVID protocols and precautions; READS will call DIVS when entering.						
Division/Group Communication Summary						
Function	Channel Name	RX Frequency N/W	RX Tone/NAC	TX Frequency N/W	TX Tone/NAC	Mode
COMMAND	CMD 2	170.4125	T4 / 136.5	165.9625	T4 / 136.5	
TACTICAL	NIFC T7	168.2500	T4 / 136.5	168.2500	T4 / 136.5	
AIR TO GROUND	A/G TAC	172.3500		172.3500		
Prepared by RESL(T) Steverson Moffat			Approved by PSC1(T) Greg Sanders		Date 08/28/20	Time 2000

Division/Group Assignment List (ICS 204)

Incident Name August Complex			Branch III		Division/Group J	
Operational Period 0700 - 1900			Date 08/29/2020			
Operations Personnel						
Operations Chief	Jon Wallace / Paul Reynolds / Derrick Moore (T)		Division/Group Supervisor		Dale Shippelhoute 8/31	
Branch Director	Dale Shippelhoute 8/31		Air Attack Supervisor No.			
Resources Assigned this Period						
Strike Team/Task Force/ Resource Designator	LWD	Leader	Number Persons	Drop Off PT./Time	Pick Up PT./Time	
E-27 WT Precision Towing 36	8/31	Larry Jensen	1			
O-79 SOF2	9/2	Tommy Hawkins	1			
O-149 SOFR(T)	9/5	Brian Plume	1			
Control Operations/Work Assignments:						
<ul style="list-style-type: none"> • Patrol fire perimeter for hot spots from Knoll Springs Ridge to Forest Service boundary and M3 Road. 						
Special Instructions:						
Use caution around snags and flag as needed for safety. Use caution when driving on roadways and on the fireline. Backhaul excessive equipment and trash. Follow all COVID protocols and precautions. READS will call DIVS when entering.						
Division/Group Communication Summary						
Function	Channel Name	RX Frequency N/W	RX Tone/NAC	TX Frequency N/W	TX Tone/NAC	Mode
COMMAND	CMD 2	170.4125	T4 / 136.5	165.9625	T4 / 136.5	
TACTICAL	NIFC T5	166.7250	T4 / 136.5	166.7250	T4 / 136.5	
AIR TO GROUND	A/G TAC	172.3500		172.3500		
Prepared by RESL (T) Steverson Moffat			Approved by PSC1(T) Greg Sanders			Date 08/28/20
						Time 2000

Division/Group Assignment List (ICS 204)

Incident Name August Complex			Branch III		Division/Group N	
Operational Period 0700 - 1900			Date 08/29/2020			
Operations Personnel						
Operations Chief		Jon Wallace / Paul Reynolds / Derrick Moore (T)		Division/Group Supervisor		Robert Wood / Richard Sinkovitz (T)
Branch Director		Dale Shippelhoute 8/31		Air Attack Supervisor No.		
Resources Assigned this Period						
Strike Team/Task Force/ Resource Designator	LWD	Leader	Number Persons	Drop Off PT./Time	Pick Up PT./Time	
C-31 HC2 Torres	9/1	Emilio Peralta	20			
E-33 ENG3 J3 Contracting 9	9/3	Ryan Mitchell	3			
E-23 ENG3 Spence Industrial 3492	8/31	Galen Pawson	3			
E-32 ENG3 Cascadia Fire 64	8/30	Jonathan Paul	3			
E-126 ENG3 CA-SRF 321	9/5	Josh Collum	7			
E-183 ENG3 Archer Mtn 15	9/6	Tom Hatton	3			
E-40 WT Buckskin 1132	8/31	Eric Foerstner	3			
O-79 SOF2	9/2	Tommy Hawkins	1			
O-149 SOFR(T)	9/5	Brian Plume	1			
O-210 EMTF	9/6	Derek Leong	1			
O-329 EMPF	9/2	Kevin Klytta	1			
O-09993 READ (T)	8/31	Peter Anderer	1			
O-323 EMTF	9/9	Bostian	1			
Control Operations/Work Assignments: <ul style="list-style-type: none"> • Continue firing in advance of main fire. • Hold line. 						
Special Instructions: Use caution around snags and flag as needed for safety, Use caution when driving on roadways and on the fire line. Backhaul excessive equipment and trash. Follow all COVID protocols and precautions. READS will call DIVS when entering.						
Division/Group Communication Summary						
Function	Channel Name	RX Frequency N/W	RX Tone/NAC	TX Frequency N/W	TX Tone/NAC	Mode
COMMAND	CMD 1	170.0000	T4 / 136.5	166.6750	T4 / 136.5	
TACTICAL	NIFC T5	166.7250	T4 / 136.5	166.7250	T4 / 136.5	
AIR TO GROUND	A/G TAC	172.3500		172.3500		
Prepared by RESL(T) Steverson Moffat		Approved by PSC1(T) Greg Sanders			Date 08/28/20	Time 2000

Division/Group Assignment List (ICS 204)

Incident Name August Complex		Branch IV	Division/Group O			
Operational Period 0700 - 1900		Date 08/29/2020				
Operations Personnel						
Operations Chief	Jon Wallace / Paul Reynolds / Derrick Moore (T)		Division/Group Supervisor	Shannon Banks / Ray Reyes (T)		
Branch Director	Joe Tieso		Air Attack Supervisor No.			
Resources Assigned this Period						
Strike Team/Task Force/ Resource Designator	LWD	Leader	Number Persons	Drop Off PT./Time	Pick Up PT./Time	
C-60 HC1 Elk Mountain	9/7	Jimmy Fox	19			
C-8 HC2 Franco 2	8/31	Jesus Cisneros	20			
ENG3 MNF-52		Freeman	3			
ENG3 KNF-57		Mota	6			
DOZ2		Peters	2			
E-135 DOZ2 Dodge Boys Excavating	9/12	Jeff Werry	1			
E-174 DOZ2 Kit Company	9/12	Ike Thomason	1			
WT Tahoe 31		Rasmussen	2			
EQTR		Jackson	1			
HEQB (T)		Knoll	1			
O-79 SOF2	9/2	Tommy Hawkins	1			
O-149 SOFR(T)	9/5	Brian Plume	1			
O-09993 READ(T)	8/31	Peter Anderer	1			
O-325 EMTP	9/9	Chacanaca	1			
O-326 EMTP	9/10	Bennett	1			
Control Operations/Work Assignments:						
<ul style="list-style-type: none"> Continue indirect line construction with dozer south of Horse Creek Drainage. 						
Special Instructions:						
Use caution around snags and flag as needed for safety						
Use caution when driving on roadways and on the fireline.						
Backhaul excessive equipment and trash. Follow all COVID protocols and precautions.						
READS will call DIVS when entering.						
Division/Group Communication Summary						
Function	Channel Name	RX Frequency N/W	RX Tone/NAC	TX Frequency N/W	TX Tone/NAC	Mode
COMMAND	CMD 1	170.0000	T4 / 136.5	166.6750	T4 / 136.5	
TACTICAL	NIFC T6	166.7750	T4 / 136.5	166.7750	T4 / 136.5	
AIR TO GROUND	A/G TAC	172.3500		172.3500		
Prepared by RESL(T) Steverson Moffat		Approved by PSC1(T) Greg Sanders			Date 08/28/20	Time 2000

Division/Group Assignment List (ICS 204)

Incident Name August Complex			Branch IV		Division/Group R	
Operational Period 0700 - 1900			Date 08/29/2020			
Operations Personnel						
Operations Chief		Jon Wallace / Paul Reynolds / Derrick Moore (T)		Division/Group Supervisor		Will Marcks / Shilo Springstead (T)
Branch Director		Joe Tieso		Air Attack Supervisor No.		
Resources Assigned this Period						
Strike Team/Task Force/ Resource Designator	LWD	Leader	Number Persons	Drop Off PT./Time	Pick Up PT./Time	
HC2IA Diamond Fire 16	9/6	Phillips	20			
C-58 Franco HC2	9/3	Cisneros	20			
C-514 Willits Helitak	9/6	Mike Walsh	5			
ENG3 MNF 345	9/1	Moreno	4			
ENG3 MDF 356	9/2	Polly	5			
ENG3 MDF 46	9/2	Simpson	5			
ENG3 Ice 29	9/1	Teitus	3			
ENG6 HB Forestry		Hartman	3			
ENG6 Rocky Point		Flores	3			
WT KNF 21	9/2		2			
DOZ2		McBride	2			
E-19 DOZ2 Henthorn Equipment	9/3	Jeff Henthorn	2			
O-29 HEQB	8/31	Jeff Hakola	1			
O-79 SOF2	9/2	Tommy Hawkins	1			
O-149 SOFR(T)	9/5	Brian Plume	1			
O-09993 READ(T)	8/31	Peter Anderer	1			
O-325 EMTP	9/9	Chacanaca	1			
O-326 EMTP	9/10	Bennett	1			
Control Operations/Work Assignments						
<ul style="list-style-type: none"> Hold western flank of Hull Fire inside lines. 						
Special Instructions						
Use caution around snags and flag as needed for safety. Use caution when driving on roadways and on the fire line. Backhaul excessive equipment and trash. Follow all COVID protocols and precautions. READS will call DIVS when entering.						
Division/Group Communication Summary						
Function	Channel Name	RX Frequency N/W	RX Tone/NAC	TX Frequency N/W	TX Tone/NAC	Mode
COMMAND	CMD 2	170.4125	T4 / 136.5	165.9625	T4 / 136.5	
TACTICAL	NIFC T1	168.0500	T4 / 136.5	168.0500	T4 / 136.5	
AIR TO GROUND	A/G TAC	172.3500		172.3500		
Prepared by RESL(T) Steverson Moffat			Approved by PSC1(T) Greg Sanders		Date 08/28/20	Time 2000

AIR OPERATIONS SUMMARY
ICS 220

Prepared By: Mike Mowery

Prepared Date: 8/28/2020

Prepared Time: 1800

1. INCIDENT NAME: August Complex	2. OPS PERIOD DATE: 8/29/2020	START TIME: 0700	END TIME: 1930	SUNRISE: 0634	SUNSET: 1945
--	---	----------------------------	--------------------------	-------------------------	------------------------

3. REMARKS (Safety Notes, Hazards, Air Operations Special Equipment, etc.): Track all dip site locations/number of dips/gallons taken. Track all drop locations/number of drops/gallons dropped. All GPS data to be collected in DEGREES, MINUTES, DECIMAL MINUTES format. Avoid Aerial Application of retardant/foam/agent within 300' of waterways, bodies of water, etc. If Retardant/foam/agent is dropped within these areas, immediately notify the AOB and provide the following information: Lat/Long, estimated number of gallons and a map detailing the area. CAUTION: POWERLINES AND SMOKE DIP SITES: No dipping out of Eel River and Black Butte Creek	4. Helibase Information: Orland Helibase 39 43.16 122 08.48 Willits Helibase 39 27.04 123 22.3 Stonyford Cargo (H-0) 39 22.32 122 34.04	5. TFR's: 8 point polygon Altitude 12,000 ft. NOTAM # 019569 Frequency: 124.2250 http://tfr.faa.gov
---	--	--

PERSONNEL	NAME	PHONE #	FREQUENCIES	RX	TX	8. Medevac: Guard 821 @ Redding on request ALS Hoist. 24 hrs. Request through Dispatch on Command repeater—Lat/Long and Vis. AIRTANKERS- order thru ATGS
AOBD	Mike Mowery	870-615-0287	Air Tactics	172.4500	172.4500	ATGS: H-507 Cobra Will use available helicopter as platform or fixed wing
AOBD-t	Mike O'Leary	239-336-9789	Rotor Victor	124.2250	124.2250	
ASGS	Bob Yeager	318-613-3683	Command 4 Repeater Linked	172.6750 Tone: T4 136.5	163.0375 Tone: T4 136.5	
Willits Helibase	Justin Buckbee	530-559-4532	A/G Tactical	172.3500	172.3500	VLATs, Heavy Air tankers and SEATs as assigned
Orland Helibase	Kibby McKibben	559-827-1817	A/G Command (Drone)	168.3375	168.3375	Missions: Recon, Buckets, Retardant, Medevac, Air Attack, Jumpers/Paracargo Initial Attack w/in TFR, PSD w/ UAS Repeater placement and maintenance
ATGS	Rick Thompson	970-209-6989	TOLC	172.1375	172.1375	
ATGS H507 Cobra	Rico Gonzalez	530-605-6376	CALCORD Calif. Air Ambulance	156.0750 Tone 156.7 (T6)	156.0750 Tone 156.7 (T6)	
			MNF Fire Net	171.5500	164.5000 T 1 2 5 6 9	
			Air Guard	168.6250 110.9	168.6250 No Tone	

9. Aircraft

FAA N#	TY	MAKE/MODEL	BASE	AVAIL	START	REMARKS	FAA	TY	MAKE/MODEL	BASE	AVAIL	START	REMARKS
61AJ	1	CH-47D A-	Willits	0700	0730	Ex, Buckets	UR-31	3	Drone		0700	0700	PSD, IR, Video
H-514	2	Bell 212 HP A-	Willits	0700	0730	Ex, Buckets, Cargo, Crews							
H-507	3	Cobra A-	Willits	0700	0730	Ex, ATGS platform							
H-516	2	Bell 212 A-	Orland	0700	0730	Ex, Buckets, Cargo, Crews							
2LM	3	Bell 206 L4 A-	Orland	0700	0730	Recon, Cargo, Buckets							

AUGUST COMPLEX

HEALTH AND SAFETY MESSAGE



If you **SEE** something, **SAY** something.

QR Code for Major Hazards and Risks

INCIDENT: August Complex

DATE: August 29, 2020

Major Hazards and Risks: Dusty Roads, Wildlife, Heat Related Injury

Incident Fire Behavior: *Don't be deceived about fire behavior. Each day, fuels are drier and the fire perimeter expands, bringing it closer to work areas. Know where the main fire is and where spot fires ignite. Confirm lookouts, communications, escape routes and safety zones are acceptable as you move and conditions change.*

Firefighter Fatigue: *Working long hours will catch up to you quickly, be sure to maintain your 2 to 1 rest/recovery hours. Accumulated fatigue is often caused by extended periods of stress with inadequate recovery periods, which results in decreased productivity, compromised immune function, and reduced alertness. Fatigued workers perform poorly, behave carelessly, tolerate greater errors and become inattentive. Chronic fatigue often results in increased stress, which may present itself through certain behavioral and physiological indicators, some of those behaviors indicators are:*

- Decreased motivation and low morale
- Increased irritability and poor attention or concentration.



18. TAKING A NAP NEAR THE FIRELINE

Recommendations for chronic fatigue/stress are:

- Ensure that workers are adequately rested before they begin work shifts.
- Provide periodic rest breaks to allow physical and mental recovery.
- Maintain hydration.
- Ensure workers maintain good personal hygiene.

Incident Safety Officers: Paul Churchill, Pat Sheridan, Brian Beisel

WILDLAND FIRE COVID-19 SCREENING TOOL

Today or in the past 24 hours, have you had any of the following symptoms¹?

Symptom
Cough more than expected?
Shortness of breath or difficulty breathing?
Fever? Chills?
Muscle pain, outside your normal for firefighting?
Sore throat?
New loss of taste or smell?
Fatigue, outside your normal for firefighting?
Headache, outside your normal for firefighting?
Congestion or runny nose, outside your normal for firefighting?
Nausea or vomiting
Diarrhea
<i>* Take temperature with no-touch thermometer, if available *</i>

Instructions for Screening

Item	What to Do
If resource has a cough that is more than expected, shortness of breath or difficulty breathing, or any other symptoms listed.	DO NOT MOBILIZE
At Entries: Consider adequate number of personnel needed for screening. Although medical personnel are ideal, screeners do not have to be medically trained. If resource has cough, shortness of breath or difficulty breathing, or any other listed symptoms including fever (over 100.4) at entry.	DO NOT ANNOUNCE Ask individual to step aside and follow the steps below.

Steps to follow

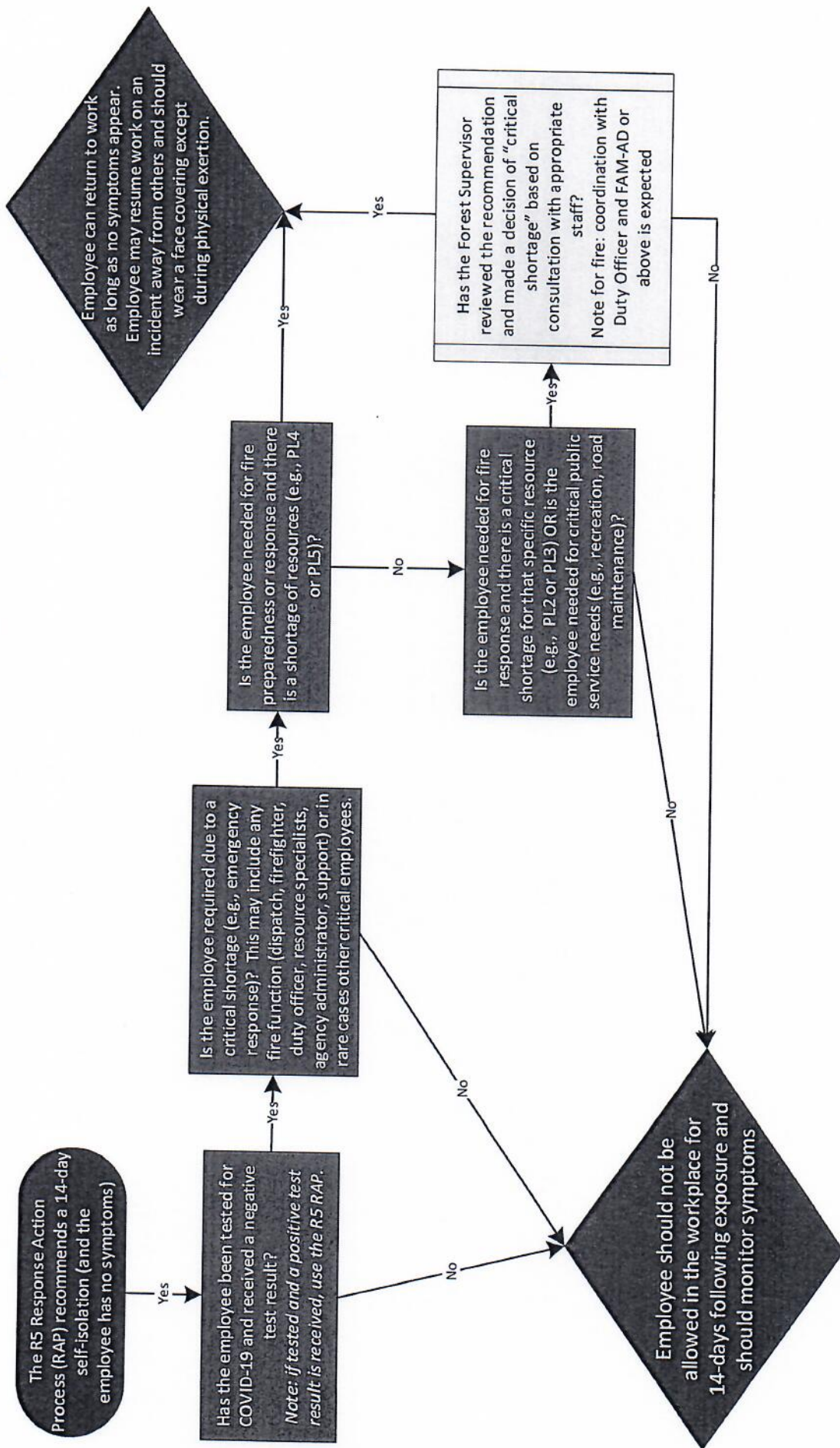
Escort symptomatic individual to isolation area.
Isolation support personnel should begin documentation.
Have symptomatic individual contact Supervisor for further direction.
Notify public health officials.
Have individual transported as appropriate.
Protect and secure any collected Personal Identifiable Information (PII) or Personal Health Information (PHI).

¹ Symptoms of Coronavirus

<https://www.cdc.gov/coronavirus/2019-ncov/symptoms-testing/symptoms.html>

Region 5: COVID-19 Exposure and Emergency Responders Interpreting CDC Guidance during a Critical Shortage

August 20, 2020



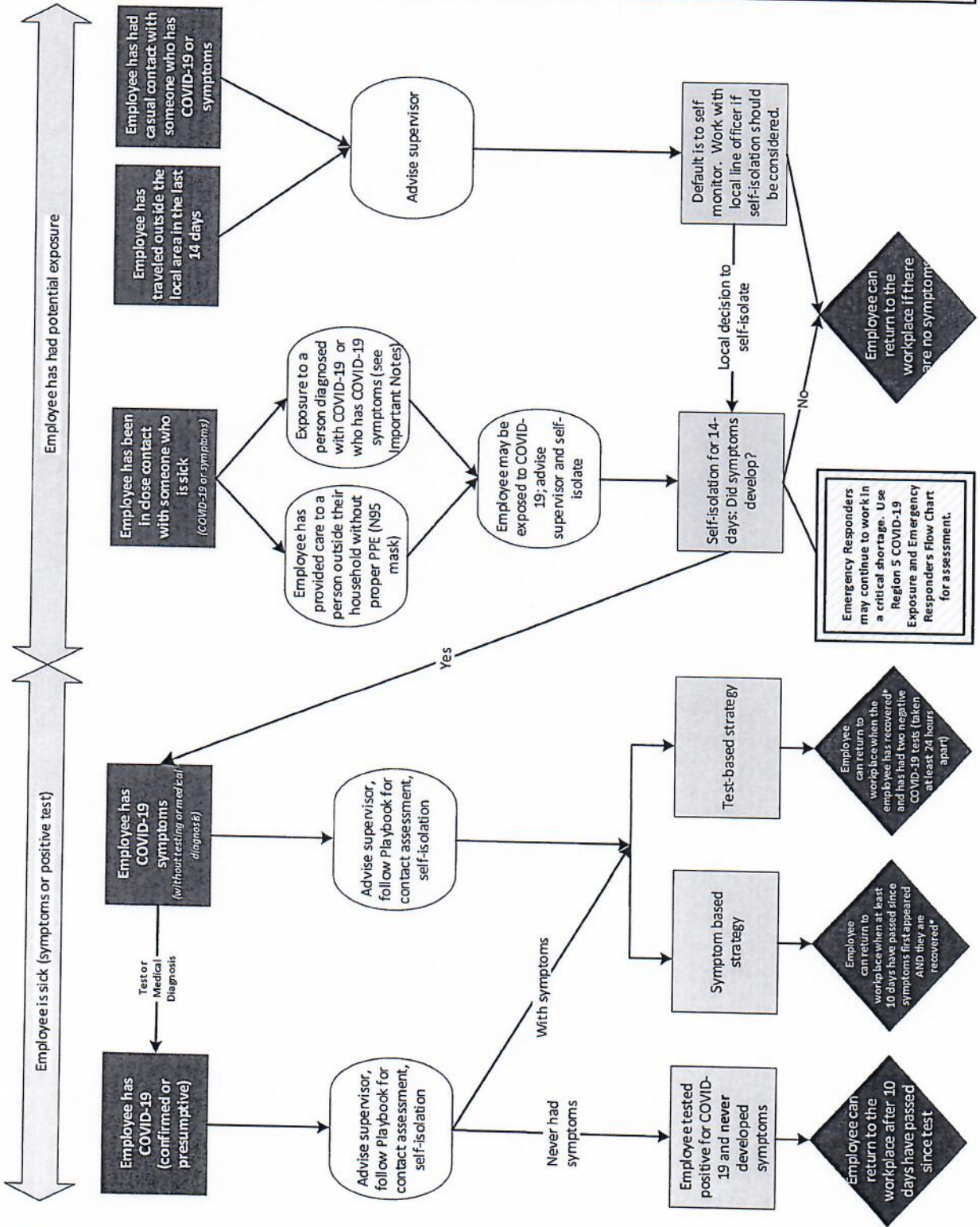
This chart is NOT appropriate for anyone who has tested positive for COVID-19 or who is displaying symptoms (fever, body aches, unexplained cough, etc.) and is not recommended for any employee who has been exposed to a cluster (>2) of cases. This chart is intended as a framework, not direction. Local discretion may be needed due to availability of testing and specific circumstances of each case.
 * COVID-19 testing may be useful for detecting asymptomatic cases and prevalence in the population.



Region 5 Pacific Southwest Region COVID-19 Response Action Process

August 20, 2020

COVID-19 Response and Employee Notification



Important Notes:

- * Recovered is defined as 10 days since symptoms first appeared AND 24 hours with no fever without the use of fever-reducing medicines AND other symptoms of COVID-19 are improving.
 - Symptoms of COVID-19 include cough, shortness of breath, trouble breathing, fever, chills, repeated shaking with chills, muscle or body aches, headache, sore throat, new loss of taste or smell, congestion or runny nose, nausea or vomiting, or diarrhea.
 - Contact Assessment should be conducted to help determine potential exposure of additional employees; conduct assessment for the 2-day period before illness onset or test date of sick employees, whichever came first.
 - Close contact is defined as less than 6 feet, for at least 15 minutes with or without face coverings/masks. Casual contact is defined as less than 6 feet for less than 15 minutes or more than 6 feet for more than 15 minutes.
 - Any employee in "close contact" with someone who is sick* may return to the workplace if the sick person is tested for COVID-19 and the test is negative.
 - Contact with exposed individuals is classified as secondary contact and does not typically require self-isolation unless the exposed individual tests positive.
 - You do not need to self-isolate unless you meet one of the criteria identified.
 - Always follow the advice of a medical provider, if given, including any need for isolation or clearance for return-to-duty.
- This document is subject to change based on CDC guidance.*

INCIDENT RADIO COMMUNICATIONS PLAN I-205		1. INCIDENT NAME		2. DATE/TIME PREPARED		3. OPERATIONAL PERIOD DATE/TIME					
		AUGUST COMPLEX		8/28/20 1245		8/29/20 0700 - 8/29/20 1900					
4. BASIC RADIO CHANNEL UTILIZATION											
Ch #	Function	Channel Name	Assignment	RX Freq	N/W	RX Tone/NAC	TX Freq	N/W	TX Tone/NAC	Mode Analog (A) Digital (D) Mixed (M)	Remarks
1	COMMAND	CMD 1	DIV N,O	170.0000	N	T4 / 136.5	166.6750	N	T4 / 136.5	A	St. John Mtn - NIFC C4
2	COMMAND	CMD 2	DIV J,N,T,V,R	170.4125	N	T4 / 136.5	165.9625	N	T4 / 136.5	A	Alder Springs -
3	COMMAND	CMD 3	DIV C, D CONTINGENCY	170.6875	N	T4 / 136.5	166.5750	N	T4 / 136.5	A	Round Mtn -
4	COMMAND	CMD 4	DIV A, C, V,	172.6750	N	T4 / 136.5	163.0375	N	T4 / 136.5	A	Anthony Peak -
5	COMMAND	CMD 5	TBD	173.7500	N	T4 / 136.5	163.8250	N	T4 / 136.5	A	TBD
6	TAC	NIFC T1	DIV A, D, R, CONTINGENCY	168.0500	N	T4 / 136.5	168.0500	N	T4 / 136.5	A	
7	TAC	NIFC T3	DIV T	168.6000	N	T4 / 136.5	168.6000	N	T4 / 136.5	A	
8	TAC	NIFC T5	DIV J, N	166.7250	N	T4 / 136.5	166.7250	N	T4 / 136.5	A	
9	TAC	NIFC T6	DIV C, O	166.7750	N	T4 / 136.5	166.7750	N	T4 / 136.5	A	
10	TAC	NIFC T7	DIV V	168.2500	N	T4 / 136.5	168.2500	N	T4 / 136.5	A	
11	IA TAC	NIFC T2	IA	168.2000	N		168.2000	N		A	
12	COMMAND	CDF CMD 7	Line Medic	151.4600	N	T8 / 103.5	159.3900	N	T1 / 110.9	A	Line Medic for DIV D & J
13	A/G	A/G CMD	AIR COMMAND	168.3375	N		168.3375	N		A	
14	A/G	A/G TAC	AIR TAC	172.3500	N		172.3500	N		A	
15	MEDEVAC A/G	CALCORD	MEDICAL	156.0750	N	156.7	156.0750	N	156.7	A	
16	AIRGUARD	GUARD	EMERGENCY	168.6250	N	CSQ	168.6250	N	110.9	A	
5. Special Instructions:											
6. I-205 Prepared By: Communications Unit Leader Trainee						Name: Rob Harendt			Signature: <i>Robert Harendt</i>		

MEDICAL PLAN (ICS 206 WF)

1. Incident Name		2. Operational Period					
August Complex		Date/Time: 08/29/2020					
3. EMS / Ambulance Services							
Name	Location	Phone & EMS Frequency	Advanced Life Support (ALS) Yes No				
Butte Co. EMS Willows, CA	Willows, Ca	530-934-6431	XX				
Butte Co. EMS Collusa, CA	Collusa, CA	530-458-0200	XX				
4. Air Rescue / Air Ambulance Services							
Name	Phone	Type of Aircraft & Capability					
Enlo Flight Care Chico, CA1531 Esplanade Chico, CA 95926	800-344-1863	Medical Air Ship, 1 Patient Day and Night					
REACH Air Medical 1524 East St. Redding, CA 96001.	800-338-4045	Medical Air Ship, 1 Patient Day and Night					
REACH Air Medical 4615 Highland Springs Rd Lakeport, CA 95453.	707-324-2400	Medical Air Ship, 1 Patient Day and Night					
GUARD 821 Redding, CA		UH-60 HOIST, ALS, Day/Night					
H-101 CalFire Willits, CA		HOIST, ALS, Day/Night					
H-205 CalFire Chico, CA		HOIST, ALS, Day/Night					
5. Hospitals (all times estimated from incident location)							
Name & Level	GPS Datum – WGS 84 Degrees Decimal Minutes		Travel Time Air Gnd		Phone	Helipad Yes No	Address
Glenn Medical Center	Lat:	39 44.51'	15 min	50 min	530-934-1996	X	1133 West Sycamore St. Willows, CA 95988
	Long:	122 51.02'					
	VHF:	TX/RX 156.075					
Enloe Medical Center Level 2 Trauma	Lat:	39 44.5'	40 Min	2.0 Hour	530-895-9107	X	1531 Esplanade Chico, Ca.
	Long:	121 51.1					
	VHF:	TX/RX 156.075					
Mercy Medical Center Level 2 Trauma	Lat:	40 34.33'	45 Min	2.25 Hour	530-225-6000	X	2175 Rosaline Ave. Redding, Ca.
	Long:	122 23.26'					
	VHF:	TX/RX 156.075					
U.C. Davis Hospital Level 1 Trauma and Burn Center	Lat:	38 33.2'	45 Min	2.25 Hour	916-734-3636 Burn Unit 916-734-3790 ER	X	2315 Stockton Blvd Sacramento, Ca.
	Long:	121 27.7'					
	VHF:	TX/RX 156.075					
6. Division / Crew Emergency Pre-Plan						<i>Update and discuss with assigned resources daily.</i>	
STONYFORD BASE CAMP		Point of Contact: Frontline Medical Trailer EMS Responders & Capability: BLS/ALS MED-L Kurt Gainer (Medic) 304-704-2970; MED-L Sam Clark (EMT) 870-867-7495 @ Medical Trailer/Yurt Helispot: Stonyford Cargo Lat / Long: 39° 22.32 ' / 122° 34.04' Elevation: 1,190' If Emergency at ICP Willows call Glenn Co. Sherriff Dept (911). Calling 911 from Base camp connects to Collusa Co.					

MEDICAL PLAN (ICS 206 WF)

STONYFORD ICP WILLOWS, CA	Point of Contact: MED-L Shanna Ellis (EMT) 318-229-6515, 318-224-0421 EMS Responders & Capability: BLS		
DIVISION ALPHA	Point of Contact: Warner Medic/ Buchan EMT EMS Responders & Capability: ALS Spike @ DP1		
DIVISION CHARLIE	Point of Contact: Klyetta Medic/Leong EMT EMS Responders & Capability: ALS		
DIVISION N	Point of Contact: Bostian Medic EMS Responders & Capability: ALS		
DIVISION O/R	Point of Contact: Chacanaca Medic/ Bennett Medic EMS Responders & Capability: ALS Spike @ Fairway Dip		
DIVISION V/T	Point of Contact: Moody Medic EMS Responders & Capability: ALS Spike @ Alder Springs		
7. Remote Aid Stations	Remote Camp Location(s)		
	Equipment Available on Site:	Basic Medical Supplies	
	Ambulance ETA :	Air –	Ground –
8. Prepared By (Medical Unit Leader)	9. Date/Time	10. Reviewed By (Safety Officer)	11. Date/Time
Sam Clark MEDL(t)	08/28/2020	Patrick Sheridan	08/27/2020

Line Emergency Day/Night:

Once any injury/illness has occurred:

- Ensure patient receives immediate First Aid and care
- Crew Supervisor to contact Division Supervisor
- Division Supervisor to contact August Communications via on Command Channel and relay information on Medical Incident Report
- **DO NOT USE THE INJURED PERSON'S NAME ON THE RADIO.**
- MEDL and Incident Safety Officer will assist with the coordination of further medical care and mode of transportation.
- Ambulance and/or air resources will be coordinated through MEDL and SOF1.

On West end of the fire from Lake Pillsbury to Covelo call Mendocino County (707) 459-5336. Med 1 to rendezvous with local EMS ambulance @ Eel River or Lake Pillsbury.

Basecamp or ICP Emergency

Contact MEDL and SOF1 with patient complaint/condition and location.

- Notify Medical Unit of any injury/illness being transported to Medical Unit prior to transport.

MNF AUGUST COMPLEX

COVID MITIGATION PLAN

Check-In: All personnel will be required to complete COVID-19 questionnaire and undergo thermal screening.

Briefing: It is requested that only module leaders and trainees attend briefings as appropriate.

ICP: All personnel are to maintain physical distancing and required to wear a face covering while in ICP / Base Camp(s).

Med Plan: Refer to the COVID-19 Operational Flowchart and the ICS 206 in the IAP for more information.

Management: A qualified Medical Unit Leader will be assigned as an incident COVID Mitigation Manager to ensure established measures are followed.

Contact is MEDL Shanna Ellis -318-229-6515 or 318-224-0421

Any Personnel that fail thermal screening will be rechecked manually by medical personnel in the Medical Unit.

Any personnel that become symptomatic will be evaluated by Medical Personnel and appropriate actions taken per CDC and Federal guidelines.



CHECK-IN PROCEDURES

Virtual Check-In: Please complete online check-in with your smart phone.

Use your Resource Order and Incident Qualification Card to complete the check-in information accurately.

1. SCAN THE QR CODE and COMPLETE the form in its entirety.



2. EMAIL RESOURCE ORDER AND MANIFEST TO:



or 2020.augustcomplex.resources@firenet.gov

If you do not have the capability or information needed to complete online check-in on your smart phone, please come to Check-In and knock on the door and someone will come outside to assist you with check-in. Thank You!

Check-in hours 0600 - 2000

FINANCE

Send all finance documentation (SIGNED CTR/shift ticket/AD forms/inspections/etc) to:

2020.augustcomplex.finance@firenet.gov



When submitting a finance document to finance please use the following format in your email subject line:

Resource order number_Last name, First name_Document type_Date
Casual Hires add "AD" after Date

Examples:

0-2_Duck, Daffy_CTR_0821_AD

0-4_Bear, Smokey_CTR_0821

E-34_Bob's Dozer_ST_0821

C-3_Smoky Hot Shots_CTR_0821

For all other Issues/questions use the email above. Be specific in the subject line to ensure your email is directed to the appropriate finance contact.

Document Type	Abbreviation
Crew Time Report SF-261	CTR
Emergency Equipment Shift Ticket OF-297	ST
Resource Order	RO
All Inspections	Inspection
All agreements	Agreement
Casual Hire Form	CH
Invoice	INV
General Message ICS-213	GM
Miscellaneous	MISC

Tentative DMOB's for August 30 to September 1

DEMOB DATE	REQ #	RESOURCE NAME	KIND	Travel Method
08/30/2020	E-44	ENG3 ALLIED	ENG3	POV
08/30/2020	E-48	DOZ2 WYCOFF	DOZ2	
08/30/2020	E-129	ENG6 JD FORESTRY 01	ENG6	POV
08/30/2020	E-172	DOZ2 MONATSU 17	DOZ2	POV
08/30/2020	E-235	PU PAMELA GOULD	PU	POV
08/30/2020	O-142	HOLMES, MATT	RADO	AOV
08/31/2020	E-31	ENG5 ALASKA WILDLAND FIRE 51	ENG5	POV
08/31/2020	E-32	ENG3 CASCADIA FIRE 64	ENG3	POV
08/31/2020	E-93	EN4 JD FORESTRY 04	ENG4	
08/31/2020	E-94	ENG4 BIG STATE 41	ENG4	
08/31/2020	E-179	ENG3 TREASURE VALLEY 3491	ENG3	POV
08/31/2020	E-180	ENG6 ROCKY POINT 116	ENG6	POV
08/31/2020	O-69	THOMAS, LOWELL	READ	
08/31/2020	O-165	CLARKE, KATHERINE LYNN	ABRO	POV
08/31/2020	O-178	LOEFFLER, JESSE W	BCMG	AOV
08/31/2020	O-351	ZAMORA, BILLY M	FSC1	AOV
08/31/2020	O-9991	NOURMOHAMA, MATTHEW DIAN	READ	AOV
09/01/2020	C-8	HC2 FRANCO 8	HC2	
09/01/2020	C-9	FIRE - CREW - T1 - ELDORADO IHC	HC1	AOV
09/01/2020	C-11	MAD RIVER IHC	HC1	
09/01/2020	E-23	ENG3 SPENCE INDUSTRIAL 3492	ENG3	
09/01/2020	E-27	WTS3 PRECISION TOWING	WTS3	
09/01/2020	E-28	ENG3 MIKES WATER 18	ENG5	
09/01/2020	E-33	ENG3 J3 CONST 09	ENG3	
09/01/2020	E-35	ENG3 ELEPHANT HEAD 325	ENG3	POV
09/01/2020	E-37	ENG3 J3 CONST 26	ENG3	
09/01/2020	E-38	ENG3 CHIHUAHUA 3063	ENG3	
09/01/2020	E-40	WTT2 BUCKSKIN 1132	WTT2	
09/01/2020	E-45	PNF-34	ENG3	
09/01/2020	E-46	ENG3 CA-PNF 332	ENG3	
09/01/2020	E-47	DOZ2 LET R BUCK	DOZ2	
09/01/2020	E-49	WTS1 PRECISION	WTS1	POV
09/01/2020	E-50	WTS2 LENIHAN 2	WTS2	POV
09/01/2020	E-51	WT2 WILLMORE AG	WTS2	POV
09/01/2020	E-52	WTS DIETZ 106	WTS2	
09/01/2020	O-29	HAKOLA, JEFFERY M	HEQB	AOV
09/01/2020	O-35	WRIGHT, OTTO LARRY	OSC2	POV
09/01/2020	O-67	MCNEIL, BRENDON	TFLD	
09/01/2020	O-129	RIDENOUR-CHAMBERLIN, SARAH	REAF	
09/01/2020	O-286.48	CHURCHILL, PAUL E	SOF2	AR
09/01/2020	O-9992	WEAVER, ROBERT	ARCH	AOV
09/01/2020	O-9993	ANDERER, PETER	READ	AOV

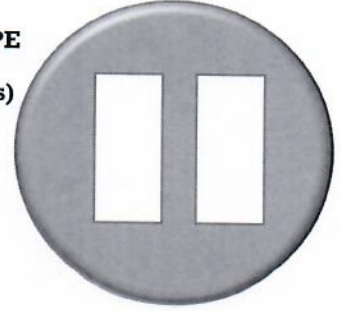
Tentative DMOB's for August 30 to September 1 (continued)

Are you on this list? Are you supposed to be on this list? If you are supposed to be on the list, there are several things you need to do before leaving the incident: 1) Return all equipment to supply and communications. Does your vehicle need inspection from Ground Support? If so, get it done! Then proceed to the ICP in Willows to meet with finance. When done call **DMOB @ 540-798-2218** answer 5 short questions about your travel and be on your way! **QUESTIONS? Call 540-798-2218**

PAUSE BEFORE POSTING IMAGES

Consider agency guidelines and potential ramifications before posting pictures of:

- fireline personnel not wearing full PPE
 - identifiable structures (i.e. addresses)
 - burning / burned structures
 - inmate crews
 - faces of children
 - accident or investigation scenes
 - sensitive natural or cultural resources
- (or QR codes to maps that identify them)
- whiteboards / flipcharts with passwords or internal contacts listed



California Penal Code 409.5(d)

Nothing shall prevent a duly authorized representative of any news service, newspaper, radio or television station or network from entering the areas closed pursuant to this section. Exceptions are crime scenes or deliberately interfering with incident operations.

Only California and New Jersey have laws which allow unlimited access to emergency areas to legitimate press. Journalists do not have a general right to access private property. Consent is between the journalists and persons having control of the property; not the public safety agency.

The California Penal Code allows media access to scenes of disaster, riot, or civil disturbance, but not to crime scenes. Media access cannot be prevented for safety reasons unless their presence would impede firefighting operations. If entering a location is hazardous, they should be advised of the situation.

Contact your incident Public Information Officer at (530) 487-4602 with any questions.



Human Resource Message

"Always do everything you ask of those you command."

- George Patton

Leading others effectively encourages those we lead to do great things. Let's remember the value of our leadership while we continue to do the important work we are doing here.

Leaders Who Motivate People:

Know their job.

Know the jobs of those they supervise.

Set the direction.

Give people the chance to succeed or fail.

Provide support for the doers.

Seeks to know "what encourages" each doer.

Work with reality and current conditions.

Enjoy their work and provide a positive work environment.

"Leaders are made, they are not born. They are made by hard effort, which is the price which all of us must pay to achieve any goal that is worthwhile." -Vince Lombardi-

**Your Human Resource Specialist is located at the ICP in Willows.
Please call or email if you have any questions or concerns**

**Linda Overton 707-373-7631
linda.overton@usda.gov**

TRAINING MESSAGE

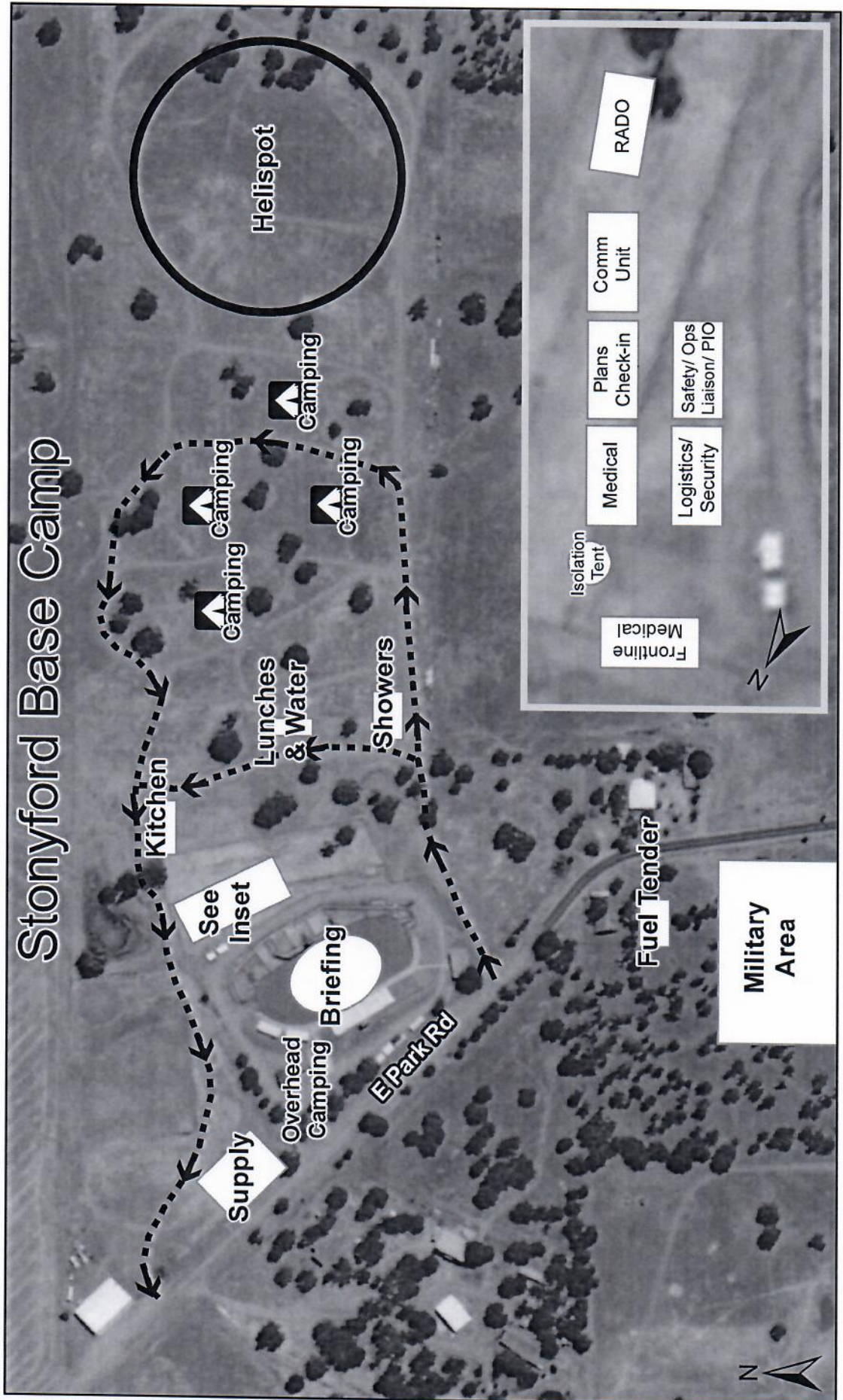
Check-in – If you have a position task book (PTB), please check in by scanning the QR code below to initiate the registration process. Please complete the form in its entirety. To complete the registration process, at your earliest convenience, contact the Debra Burgos, TNSP at 404-987-3256. Please email a copy of your qualification card and position task book cover to debra.burgos@usda.gov.

Demob – In order to receive credit for your assignment, you must 'close out' with the Training Specialist prior to demob. Closeout requirements include: 1) ensure your trainer(s)/evaluator(s) has/have initialed completed tasks in your PTB; 2) obtain an Incident Performance Evaluation (ICS Form 226 – an electronic copy is available upon request) signed by your trainer(s)/evaluator(s); 3) obtain an evaluation record (located in the back of your PTB), and 4) if evaluator initialed #1 on your evaluation record, ensure he/she signs as final evaluator (located on the backside of your PTB cover page).

The QR code for the fillable forms will be available in the IAP Training Message or can be emailed/texted to both the trainee and trainer(s)/evaluator(s) upon request.



AUGUST COMPLEX TRAINEE REGISTRATION



Stonyford Base Camp

Helispot

Camping

Camping

Camping

Kitchen

Lunches & Water

Showers

See Inset

Briefing

Overhead Camping

E Park Rd

Supply

Fuel Tender

Military Area

Medical Frontline

Isolation Tent

Medical

Plans Check-in

Comm Unit

RADO

Safety/ Ops Liaison/ PIO

Logistics/ Security

August Complex Contact List

Position	Name	Number	Position	Name	Number
COMMAND and GENERAL STAFF			OPERATIONS		
Incident Commander	Mark Morales	479-264-7991	Operations Sections Chief	Paul Reynolds	662-418-9743
Incident Commander (T)	Andy Baker	706-400-2150	Operations Sections Chief (T)	Derrick Moore	252-531-6078
Safety Officer	Pat Sheridan	540-490-1764	Operations Branch I Dir.	Mike Brunson	706-266-4244
Liason Officer	Andy Gaston	706-508-2363	Operations Branch II Dir.	Michael Womack	434-547-2670
PLANS			Operations Branch II Dir. (T)	Kerry Clark	205-272-2424
Plans Section Chief	Red Anderson	423-716-1350	Operations Branch III	Michael Heard	334-343-1624
Plans Section Chief	Tom Lowry	918-429-4258	Operations Branch III	Sullivan (T)	
Resources Unit	Sue Wilder	228-760-2382	Operations Branch IV	Joe Tieso	
Resources Unit	Joe Robles	803-727-8923	Planning Ops	Jon Wallace	208-830-1853
Status Check-in	Allison Cochran	256-566-5509	Division A	Corey Stowe	
Situation Unit	Scott Hamlet	918-448-3111	Division A (T)	Patrick Krage	715-891-2358
Fire Behavior Analyst	Mike Housh	912-281-1575	Division C	Kendall Carpenter	918-721-2502
SOPL	Ben Rowland	870-490-0128	Division C (T)	Robert Hoyle	
LOGISTICS			Division D	Jason Packard	352-232-6350
Logistics Section Chief	Chris Alford	571-334-8549	Division T	Scott Cones	
Medical Unit Leader	Shanna Ellis	318-229-6515	Division V	Vic Doig	352-493-3155
Security Manager	Christopher Cooley	912-660-9397	Division V (T)	Colten Moor	276-706-7729
FINANCE			Division J	Dale Shippelhoue	
Finance Section Chief	Karen Patterson	919-810-7727	Division N	Robert Wood	912-346-0978
			Division N (T)	Richard Sinkovitz	912-464-9453
			Division O	S. Banks	
			Division O (T)	R. Reyes	
			Division R	Will Marcks	
			Air Ops Branch Director	Michael Mowery	870-214-0034
			Air Support Grp Supervisor	Michael O'Leary	239-336-9789
			Air Support	Bob Yeager	318-613-3683

Medical Incident Report

FOR A NON-EMERGENCY INCIDENT, WORK THROUGH CHAIN OF COMMAND TO REPORT AND TRANSPORT INJURED PERSONNEL AS NECESSARY.

FOR A MEDICAL EMERGENCY: IDENTIFY ON SCENE INCIDENT COMMANDER BY NAME AND POSITION AND ANNOUNCE "MEDICAL EMERGENCY" TO INITIATE RESPONSE FROM IMT COMMUNICATIONS/DISPATCH.

Use the following items to communicate situation to communications/dispatch.

1. CONTACT COMMUNICATIONS / DISPATCH (Verify correct frequency prior to starting report)

Ex: "Communications, Div. Alpha. Stand-by for Emergency Traffic."

2. INCIDENT STATUS: Provide incident summary (including number of patients) and command structure.

Ex: "Communications, I have a Red priority patient, unconscious, struck by a falling tree. Requesting air ambulance to Forest Road 1 at (Lat./Long.) This will be the Trout Meadow Medical, IC is TFLD Jones. EMT Smith is providing medical care."

Severity of Emergency / Transport Priority	<input type="checkbox"/> RED / PRIORITY 1 Life or limb threatening injury or illness. Evacuation need is IMMEDIATE <i>Ex: Unconscious, difficulty breathing, bleeding severely, 2° – 3° burns more than 4 palm sizes, heat stroke, disoriented.</i> <input type="checkbox"/> YELLOW / PRIORITY 2 Serious Injury or illness. Evacuation may be DELAYED if necessary. <i>Ex: Significant trauma, unable to walk, 2° – 3° burns not more than 1-3 palm sizes.</i> <input type="checkbox"/> GREEN / PRIORITY 3 Minor Injury or illness. Non-Emergency transport <i>Ex: Sprains, strains, minor heat-related illness.</i>	
Nature of Injury or Illness & Mechanism of Injury		<i>Brief Summary of Injury or Illness (Ex: Unconscious, Struck by Falling Tree)</i>
Transport Request		<i>Air Ambulance / Short Haul/Hoist Ground Ambulance / Other</i>
Patient Location		<i>Descriptive Location & Lat. / Long. (WGS84)</i>
Incident Name		<i>Geographic Name + "Medical" (Ex: Trout Meadow Medical)</i>
On-Scene Incident Commander		<i>Name of on-scene IC of Incident within an Incident (Ex: TFLD Jones)</i>
Patient Care		<i>Name of Care Provider (Ex: EMT Smith)</i>

3. INITIAL PATIENT ASSESSMENT: Complete this section for each patient as applicable (start with the most severe patient)

Patient Assessment: See IRPG PAGE 106

Treatment:

4. TRANSPORT PLAN:

Evacuation Location (if different): (Descriptive Location (drop point, intersection, etc.) or Lat. / Long.) Patient's ETA to Evacuation Location:

Helispot / Extraction Site Size and Hazards:

5. ADDITIONAL RESOURCES / EQUIPMENT NEEDS:

Example: Paramedic/EMT, Crews, Immobilization Devices, AED, Oxygen, Trauma Bag, IV/Fluid(s), Splints, Rope rescue, Wheeled litter, HAZMAT, Extrinsic

6. COMMUNICATIONS: Identify State Air/Ground EMS Frequencies and Hospital Contacts as applicable

Function	Channel Name/Number	Receive (RX)	Tone/NAC *	Transmit (TX)	Tone/NAC *
COMMAND					
AIR-TO-GRND					
TACTICAL					

7. CONTINGENCY: Considerations: If primary options fail, what actions can be implemented in conjunction with primary evacuation method? Be thinking ahead.

8. ADDITIONAL INFORMATION: Updates/Changes, etc.

REMEMBER: Confirm ETA's of resources ordered. Act according to your level of training. Be Alert. Keep Calm. Think Clearly. Act Decisively.