

# August Complex

*CORRECTED*

## Incident Action Plan

CA-MNF-000753 (P5NFP420 0508) FS  
CA-MNF-000753 (NGW4) DOI

**September 7, 2020**

0700-1900



Daily Schedule – Pacific Daylight Savings Time

- 0700 – Operational Briefing – Stonyford, ICP and Virtual
- 1000 – C&G –Virtual
- 1500 Pre-Planning Meeting – ICP and Virtual
- 1600 – Planning AP – ICP and Virtual
- 1800 – IAP Parts Due

Map QR Code



IAP QR Code



## INCIDENT OBJECTIVES (ICS 202)

**1. Incident Name:** August Complex

**2. Operational Period:** Date From: 09-07-2020 Date To: 09-07-2020  
Time From: 0700 Time To: 1900

**3. Objective(s):**

**Leaders Intent:**

Suppress the August Complex fires using management strategies and tactics that provide the highest likelihood of success given risks to responders.

**Management Objectives:**

1. Ensure the safety and wellbeing of emergency responders and the public by making timely risk-informed decisions that align with Agency values.
2. Protect natural and cultural resources of Federal, State, and Local interest by engaging agency resource advisors, partners and community stakeholders in effective communication and planning.
3. Develop and implement a strategic plan for the Hopkins Wilderness fires in collaboration with the Shasta-Trinity and Six Rivers National Forests.
4. Foster good relationships with local cooperators, stakeholders and the public by providing coordinated, accurate and timely information.
5. Keep costs commensurate with values at risk by working with the local unit and coordinating with the Agency Administrator and Incident Business Advisor.
6. Coordinate with the Forest's COVID-19 Advisor to ensure COVID mitigation measures are in alignment with Agency expectations and adapt as necessary to changing conditions.
7. Coordinate suppression efforts with CALFIRE and Shasta-Trinity National Forests on the Elkhorn Fire.

**Control Objectives**

- Hold the Doe Fire south of the M2 road and Riley Ridge to Hull Canyon Road to the 302 Road. Coordinate closely with Crane Mills and Cal Fire resources.
- Hold the Doe Fire east of the M1 and north of the M3 roads, Brushy Ridge and Horse Ridge to M1 Road and west of the 306 Road.
- Contain the spot fire south of Monkey Rock.

**4. Operational Period Command Emphasis:**

See attached Weather Forecast

General Situational Awareness:

See attached Safety Message

**5. Site Safety Plan Required? Yes No X**

Approved Site Safety Plan(s) Located at:

**6. Incident Action Plan** (the items checked below are included in this Incident Action Plan):

- |   |   |                                |
|---|---|--------------------------------|
| <input checked="" type="checkbox"/> ICS 203 | <input checked="" type="checkbox"/> Safety Message          | <u>Other Attachments:</u>      |
| <input checked="" type="checkbox"/> ICS 204 | <input checked="" type="checkbox"/> Weather Forecast        | <input type="checkbox"/> _____ |
| <input checked="" type="checkbox"/> ICS 205 | <input checked="" type="checkbox"/> Fire Behavior           | <input type="checkbox"/> _____ |
| <input checked="" type="checkbox"/> ICS 206 | <input checked="" type="checkbox"/> Fire COVID-19 Screening | <input type="checkbox"/> _____ |
| <input checked="" type="checkbox"/> ICS 220 | <input type="checkbox"/>                                    | <input type="checkbox"/> _____ |

**7. Prepared by:** Name: Joseph Robles

Position/Title: RESL

Signature: *Joseph Robles*

**8. Approved by Incident Commander:**

Name: Mark Morales, IC

Signature: *Mark Morales*

## ORGANIZATION ASSIGNMENT LIST (ICS 203)

<b>1. Incident Name:</b> August Complex		<b>2. Operational Period:</b> Date From: 09-07-2020 Date To: 09-07-2020 Time From: 0700 Time To: 1900		
<b>3. Incident Commander(s)/ Agency Incident Coordinator and Command Staff</b>		<b>7. Operations Section:</b>		
IC	Mark Morales; Andy Baker (T)	Ops Chief - North	Dwight Snow	
Safety Officer	Brian Beisel; Pat Sheridan;	Ops Chief - South	Paul Reynolds / Derrick Moore(T)	
Public Info. Officer	Williams; Krasko; Grandy; Nedlo (T)	Planning Operations	Jon Wallace	Aaron Gay (T)
Liaison Officer	Owenby; Farmer (T) Hays (T)	Strategic Operations	Tom Ledbetter	Anthony DiMaggio (T)
COVID Liaison	Briggs; Kirkaldie; Smith	<b>Branch</b>	<b>I – North Ops</b>	
		Branch Director	Mike Brunson	Tim Nutley (T)
<b>4. Agency/Organization Representatives:</b>		Division/Group	A	Wood / Hoyle (T)
Agency/Organization	Personnel	Division/Group	C	Carpenter / Johnson (T)
USFS	Ann Carlson; Jason Kuiken; Frank Aebly; Lois Shoemaker; Kristen Lark; Chris Dowling	Division/Group	D	Deets / Valdiviez (T)
FMO	Curtis Coots / Terry Nickerson	Division/Group		
READ	DeMeo/Nourmohamadian	Division/Group		
Agency Rep Cal-Fire	C. Thompson (TGU Unit Chief)	<b>Branch</b>	<b>V – North Ops</b>	
BLM	Alex Miyagishima	Branch Director	Michael Heard	Shawn Nagle (T)
FS Military Liaison US Army	Frank Guzman COL Luke R. Donohue	Division/Group	W	Malcolm Smith (T) & Vincent (T)
<b>5. Planning Section:</b>		<b>Branch</b>	<b>II – South Ops</b>	
Chief	Tom Lowry; Jeff Adams (T); Greg Sanders (T)	Branch Director	Michael Womack	Kerry Clark (T)
Resources Unit	Robles, Wilder, Moffat (T)	Division/Group	T	Beery/Alves(T)/Bowser(T)
Demobilization Unit	Henry Hickerson	Division/Group	V	Doig / Moor (T)
Situation Unit	Scott Hamlet, Brendan Witt (T)	<b>Branch</b>	<b>IV – South Ops</b>	
Fire Behavior Analyst	Michael Housh; Kelly Cagle	Branch Director	James Sullivan	
GIS Specialist	Dodd (Virtual); Holden (Remote)	Division/Group	O/R	Sinkovitz / Reyes (T) Springstead (T)
Information Technology	Leduc; Wyckoff (T); Shirley (T)	<b>Air Ops Branch</b>		
Training Specialist	Debra Burgos	Air Ops Branch Dir.	Michael Mowery	Michael O'Leary (T)
Strategic Ops Planner	Ben Rowland	Air Support	Bob Yeager	
Documentation	Christine Oelschlager	<b>Roads Group</b>		
IMET	Rick Davis	Group Supervisors	Randy Chapin	Cesar Avilla
<b>6. Logistics Section:</b>		<b>8. Finance/Administration Section:</b>		
Chief	Alford; Schiffer; Arteaga (T); Fitzpatrick (T)	Chief	Billy Zamora	
Supply Unit	Sandy Rhodes	Deputy Chief	James Meredith	
Facilities Unit	Lewis Brostrom; Terry Holsclaw	Time Unit	Bryant; Blackwell; McDonald (Virtual)	
Ground Support Unit	Randy Chapin; Joe Emberson	Procurement Unit	Sherry Helmick	
Communications Unit	Mark Spann	Comp/Claims Unit	Donna Rogers	
Medical Unit	Ellis; Clark (T); Gainer			
Security	Cooley; Clemons (T)			
Food Unit Leader	Christopher Hubacker (T)			
<b>9. Prepared by:</b> Name: <u>Joe Robles</u> Position/Title: <u>RESL</u> Signature: <u>/s/ Joe Robles</u>				
ICS 203	IAP Page <u>3</u>	Date/Time: <u>09/06/2020 1700</u>		



# Fire Weather Forecast



**FORECAST NO:** 19  
**PREDICTION FOR:** 24 Hr Shift  
**SHIFT DATE:** Monday 9/07/2020  
**TIME AND DATE ISSUED:** 9/6/2020 1800 PDT

**INCIDENT:** August Complex  
**UNIT:** Mendocino NF  
**SIGNED:** *Rick Davis*  
Incident Meteorologist (IMET)

**Discussion:** \*\*\*Red Flag Warning Monday Evening through Wednesday Morning\*\*\*  
\*\*\*Excessive Heat Warning through Tuesday\*\*\*

A dry backdoor front is expected to move into the region today with breezy north to northeasterly winds and critically low RHs tonight through Wednesday morning. The prolonged heatwave will continue as well with near record hot and dry weather for the fire area through Tuesday. Weather conditions will remain warm and dry with lighter winds mid to late week.

### WEATHER FORECAST FOR TODAY:

**SKY/WEATHER:** Sunny, hot and hazy.  
**Max Temperature:** 85 to 90 higher elevation and smoked filled valleys, except 98 to 103 lower valleys.  
**Min RH:** 10 to 15 percent  
**WINDS:** 20 ft Level  
**Lower Valleys/Lower Slopes** Down drainage 5 to 10 mph, becoming up drainage around 10 mph by noon.  
**Upper Ridges:** Southwest wind 10 to 15 mph shifting West in the afternoon.  
**TRANSPORT WINDS:** West around 15 mph shifting Northwest in the afternoon. **Mixing Height** 8,000 ft

### TONIGHT: \*\*\*Red Flag Warning\*\*\*

**SKY/WEATHER:** Clear becoming breezy with continued poor RH recovery  
**Min Temperature:** Upper 60s to lower 70s.  
**Max RH:** 15 to 30 percent.  
**WINDS:** 20 ft Level  
**Valleys/Lower Slopes:** Northeast 10 to 15 mph with higher gusts in aligned drainages.  
**Upper Ridges:** Northeast 15 to 20 mph with higher gusts to over 30 mph in aligned and NE wind prone areas.

### TUESDAY: \*\*\*Red Flag Warning\*\*\*

**SKY/WEATHER:** Mostly sunny and breezy.  
**Max Temperature:** 82 to 87 higher elevations and mid slopes except 95 to 100 lower valleys  
**Min RH:** 12 to 18 percent.  
**WINDS:** 20 ft Level  
**Lower Valleys/Lower Slopes:** Northeast around 15 mph with higher gusts in aligned drainages.  
**Upper Ridges:** Northeast around 20 mph with higher gusts of 30 to 40 mph in aligned and NE wind prone areas.  
**TRANSPORT WINDS:** Northeast 25 to 35 mph. **Mixing Height** 7,000 ft.

### Outlook Wednesday through Friday:

Continued warm and dry with temperatures from 80 to 90 degrees, RHs from 15 to 20 percent, and mainly terrain driven winds with ridgetop winds from 10 to 15 mph.



Mendocino Pass



Stonyford



Monkey Rock



Solder Ridge



Thomes Creek

RAWS Observations

## FIRE BEHAVIOR FORECAST

FORECAST NUMBER: #20		TYPE OF FIRE: Wildfire
FIRE NAME: August Complex		OPERATIONAL PERIOD: Monday 07 September 2020
DATE ISSUED: Sunday 06 September 2020		TIME ISSUED: 1800
UNIT: CA-MNF	<i>Michael W. Housh</i>	
Prepared By: Mike Housh/FBAN		

### INPUTS

ER SUMMARY: **\*\*\*Red Flag Warning Monday Evening through Wednesday Morning\*\*\*Excessive Heat Warning through Tuesday\*\*\***

TODAY (Monday): See Fire Weather Forecast.

**WEATHER:** Sunny, hot and hazy

**Lower Valleys/Slopes:** **MAX Temp:** 98-103 degrees **MIN Rh:** 10-15% **WIND:** Down drainage 5 to 10 mph, becoming up drainage around 10 mph by noon.

**Upper Ridges:** **MAX Temp:** 85-90 degrees **MIN Rh:** 10-15% **WIND:** Southwest wind 10 to 15 mph shifting West in the afternoon

**MIXING HEIGHT:** 8,00 ft AGL **TRANSPORT WINDS:** SW around 15 mph shifting West in the afternoon **LAL:** 1 **CWR:** 0%

**GENERAL FUEL ASSUMPTIONS:** It has been over 100-150 days since much of the fire area has received over 0.10" of precipitation and fuels are extremely dry and burning readily. 10 Hr fuel moistures in the fire area were observed at 4-6% on September 6th. Smoke that has previously moderated fire behavior has been clearing for the last two days and will continue through Tuesday. Expect fire behavior to increase in rates of spread and intensity. This should be a heads-up situation. ***This is likely to occur around 1100-1200 today.***

### FIRE BEHAVIOR OUTPUTS

#### GENERAL

Fuels continue to dry every day and humidity's over the fire area were recorded at 11-22% yesterday. Smoke over the fire area has moderated fire behavior, but that will change significantly over the next few days. Wind direction will be switching 180 degrees through Monday/Tuesday with an increase in speed. Maintain your situational awareness!

**Mendocino Pass RAWs FM% 1Hr: 4.04 10 Hr: 4.30 100 Hr: 5.32 1000 Hr: 7.43**

Vegetation Type	Fuel Model	Fire Behavior Potential (Clear Air)				Fire behavior Potential (Under Smoke)			
		ROS (ch\hr)	FL (ft)	PIG (%)	Spot Dist (mi)	ROS (ch\hr)	FL (ft)	PIG (%)	Spot Dist (mi)
Grass	GR2	50-71	5-7	80	0.3	45-65	5-6	67	0.3
Grass/Shrub	GS2	32-45	6-8	80	0.3	30-45	6-7	67	0.3
Shrub	SH7	51-70	15-19	80	0.3	49-67	15-18	67	0.3
Timber	TL8	7-10	3-5	80	0.3	6-9	3-5	67	0.3

**SPECIFIC: Clearer sky's beginning around 1100-1200 today.**

>**Branch I:** Anticipate continued Fire spread up slope/up drainage to the NE during the day on the spot in the NW corner of the Old Glade fire in Div C. This will switch to SW spread in the evening hours. Post lookouts and monitor the situation on the Elkhorn Fire to the N/NE.

>**Branch II:** Active upslope fire spread on the Western edge of the Doe Fire. Fire spread will switch towards the Black Butte River after the NE wind switch over the evening hours.

>**Branch III/IV:** Anticipate pockets of unburned fuel especially along Brushy Camp Ridge to clean up. Hull Fire: Div R, Spots near Monkey Rock will burn up drainage with the SW-W winds. This will switch to down drainage to the SW as the NE winds move into the area over the evening hours. Wind models indicate channeling of winds in this area, significantly increasing intensity.

>**Branch V:** Hopkins fire, IR indicates significant heat along the Northern half of the fire perimeter. Expect continued fire movement to the north following terrain and fuels and switching to SW spread after the NE winds switch in the evening hours. Willow Basin fire, some heat detected on SE corner of the fire. This area has aligned in a NE/SW aligned chute and may move to the NE as it burns upslope.

\*\*\*\*\*

A significant wind switch will occur during today's operational period and into the evening hours. Winds will switch from the SW/WSW to West and eventually NE as the front moves into the area. Wind speeds are expected to increase and may reach 20 mph with gusts to 35-40 mph over the ridgetops and narrow local terrain features. High potential for spotting over established control lines.

**\*\*ElkHorn fire:** Continue to maintain SA on this developing situation. \*\*

### AIR OPERATIONS:

Periods of clear sky may allow for utilization of aircraft today.

### SAFETY

Areas of the fire that burned previously are beginning to reburn and snags are starting to fall across the roads. Continue to monitor these areas and maintain your SA. Scout and confirm both escape routes and safety zones to ensure that they still are viable options.

# HEALTH AND SAFETY MESSAGE

*“Safety is a product of your willingness to speak up”*

**INCIDENT:** August Complex

**DATE:** September 07, 2020

**Major Hazards & Risks:** Structure Protection

**Structure Protection:** Factors that could make an attempt to save a structure too dangerous include:

- The fire is making a sustained run and there is little or no clearance between the structure and the fuel.
- The fire behavior is extreme; spot fires are numerous and the spread is outpacing containment.
- Water supply will not last as long as the threat of the fire.
- The fire intensity dictates that you leave the fire area immediately.
- The structure is constructed of wood and has a wood shake roof.
- The roof of the structure is more than one-quarter involved.
- There is fire inside of the structure, or windows are broken and there is no way to quickly repair them.
- You cannot safely remain at the structure because your escape route would become unusable.

Consider the following when implementing a plan to protect structures:

- Don't enter a burning structure unless you are trained, equipped, and authorized.
- Always stay mobile and wear all of your PPE.
- Back in equipment to allow for a quick escape.
- Coil a short, charged line with a fog nozzle on your engine for safety and quick knockdown capability.
- Don't make long hose lays.
- Keep at least 100 gallons of water reserve in your tank.
- Check the road system before the fire approaches. Know bridge limits, alternate routes, and turnarounds.
- Coil and charge garden hoses.
- Check and mark hazmat; e.g., propane, pesticides, and paint storage.



15. WIND INCREASES AND/OR CHANGES DIRECTION

## STOP, THINK, DISCUSS, ACT

Stop and take the time to think about what you're going to do. Ask yourself, what is the worst thing that could happen?

Think about how you're going. To do it, is it the safest way? If not, how can you do it better?

Do I have the right tools, training, and equipment.

Act in the safest way possible. Follow proper procedures, don't rush, and STOP if it can't be done SAFELY.

Safety Officers: Brian Beisel, Pat Sheridan

## INCIDENT SAFETY ANALYSIS 215a

August Complex/CA-MNF-000753 - Monday, September 07, 2020

8. Location	9. Hazard	6. Control or Abatement Action (Engineering, Administrative, PPE, Avoidance, Education, etc)
ALL	Driving & Traffic	<ul style="list-style-type: none"> <li>~ Practice "Defensive Driving" techniques on all roads.</li> <li>~ Use spotters when backing.</li> <li>~ Honk horn to alert personnel when backing.</li> <li>~ Keep clutter off dash and inside cab.</li> <li>~ Follow Driving LCES (Lights, Chock blocks, Emergency brake, Seat belts).</li> <li>~ Always use headlights.</li> <li>~ Yield to pedestrians and bicycles.</li> <li>~ Observe posted speed limits.</li> <li>~ Use the 3 second rule for following distance when driving.</li> <li>~ Avoid distractions (eating, cell phones, radio).</li> <li>~ Ensure that windshields are kept clean of dust and bugs.</li> <li>~ Allow dust to settle to maintain safe visibility.</li> </ul>
ALL	Helicopter Operations	<ul style="list-style-type: none"> <li>~ Stay clear of all bucket drops when suppression actions are in place and allow 1 minute prior to re-entry.</li> <li>~ Monitor A-G communications.</li> <li>~ Follow aviation safety guidelines in IRPG P. 58 and IHOG.</li> <li>~ Report any flying hazards to pilot.</li> </ul>
ALL	Fatigue & Over Exertion	<ul style="list-style-type: none"> <li>~ Drink 1 quart of water each hour during and after work.</li> <li>~ Rotate crews out of smoky areas.</li> <li>~ Set a reasonable work pace and allow adequate rest breaks while on the project.</li> <li>~ Stagger work crews start time to limit fatigue.</li> <li>~ Use buddy system to monitor personnel of heat related and fatigue issues.</li> <li>~ Long travel routes to assignments.</li> <li>~ Follow work / rest guidelines.</li> <li>~ Rotate personnel out of smoke as much as possible.</li> </ul>
ALL	Firing Operations & Devices	<ul style="list-style-type: none"> <li>~ Only personnel trained in the use of each device will be authorized to use firing equipment.</li> <li>~ Ensure all personnel are aware of firing operation that may affect them.</li> <li>~ Wear appropriate PPE and avoid fuel spills on clothes.</li> <li>~ Ensure aerial/ground ignition plans have been adequately developed and personnel are briefed.</li> </ul>
ALL	Indirect Fireline	<ul style="list-style-type: none"> <li>~ Post lookouts, identify escape routes and safety zones IRPG page 7.</li> <li>~ Review "Strategy/Indirect Attack" (IRPG pg. 87).</li> </ul>
ALL	Heavy Equipment Operations	<ul style="list-style-type: none"> <li>~ Ensure communications are established with operators.</li> <li>~ Use hand signals if other communications are unavailable.</li> <li>~ Maintain a 50'-100' exclusion area around equipment and increase it to 1 1/2 times tree height when in timber.</li> <li>~ Use a spotter when backing.</li> <li>~ Avoid working below heavy equipment.</li> </ul>
ALL	Heat Related Illness (HRI) & Dehydration	<ul style="list-style-type: none"> <li>~ Drink Fluids throughout operational period (6-8 qts/shift).</li> <li>~ Maintain water/electrolyte ratio of 3 to 1.</li> <li>~ Carry extra water on line and cache water at drop points.</li> <li>~ Take Frequent breaks, minimum of 10 minutes every hour.</li> <li>~ Allow out of area resources time to acclimatize before expecting peak performance.</li> <li>~ Recognize symptoms of HEAT RELATED ILLNESS which include.                             <ul style="list-style-type: none"> <li>o Lack of energy</li> <li>o Headaches, dizziness</li> <li>o Lack of rest</li> <li>o No hunger, poor eating habits</li> <li>o Hot skin, and lack of sweating</li> </ul> </li> </ul>

## INCIDENT SAFETY ANALYSIS 215a

ALL	Steep Terrain & Rolling Debris	<ul style="list-style-type: none"> <li>~ Maintain 8'-10' spacing when working &amp; walking.</li> <li>~ Don't work above any personnel, including bucket work.</li> <li>~ Be on the lookout for rolling rocks, debris, or burning material.</li> <li>~ Evaluate necessity to send personnel in areas with limited access.</li> <li>~ Post lookouts and refer to IRPG page 7.</li> </ul>
ALL	Communications	<ul style="list-style-type: none"> <li>~ Maintain communication with aviation resources, and suppression organization.</li> <li>~ Ensure all know frequency and protocol for contacting resources.</li> <li>~ Utilize the ICS 205.</li> <li>~ Utilize human repeaters when working in dead spots.</li> </ul>
ALL	Extreme Fire Behavior	<ul style="list-style-type: none"> <li>~ Share weather observations with all personnel assigned to division.</li> <li>~ Establish "Trigger Points" to withdraw.</li> <li>~ Use "Risk Management" process prior to engaging in suppression actions, refer to page 1, IRPG.</li> </ul>
ALL	Spike Camp	<ul style="list-style-type: none"> <li>~ Keep a clean camp.</li> <li>~ Logistical support in place.</li> <li>~ Ensure communications are in place.</li> <li>~ Review and observe "Line Spike" considerations IRPG page 95.</li> </ul>
ALL	Power Utilities	<ul style="list-style-type: none"> <li>~ Notify all personnel of down electrical lines.</li> <li>~ Refer to the IRPG page 24 for Power Line Safety.</li> <li>~ Always treat downed wires as energized.</li> <li>~ Identify and avoid high tension transmission lines.</li> <li>~ Identify and avoid high pressure natural gas lines.</li> <li>~ Identify and avoid damaged gas service near structures.</li> <li>~ Be aware of utility restoration in your work area.</li> </ul>
ALL	COVID-19	<ul style="list-style-type: none"> <li>~ Maintain at least 6' distancing from others when possible.</li> <li>~ Work as a module of 1 for duration of incident.</li> <li>~ Wear masks around others if 6' distancing isn't maintained</li> <li>~ Wear masks in camp at all times \ if others are not around use common sense.</li> <li>~ Wash hands often and use hand sanitizer through out the day.</li> <li>~ Report any illness to supervisor immediately and remove yourself from others</li> <li>~ Notify Medical Unit of any illness</li> <li>~ Do not share tools or equipment</li> <li>~ Do not touch any part of your face</li> </ul>
ALL	Wildlife & Livestock	<ul style="list-style-type: none"> <li>~ Rattle snakes and scorpions are plentiful in this area.</li> <li>~ Look around before you sit or step over logs.</li> <li>~ Watch for wildlife and livestock on roads.</li> <li>~ Clean up all trash and debris through out the day.</li> <li>~ Wear gloves when moving logs or debris.</li> </ul>
ALL	Night Operations	<ul style="list-style-type: none"> <li>~ Wear high visibility reflective vests when in roadways.</li> <li>~ Use glow sticks to mark hazards.</li> <li>~ Ensure personnel are using headlamps.</li> <li>~ Watch for signs of fatigue.</li> <li>~ Take breaks away from areas of known hazard.</li> <li>~ Review escape routes and safety zones in daylight.</li> </ul>
ALL	Bees, Ticks, Mosquitoes	<ul style="list-style-type: none"> <li>~ Canvas crew members for those with known allergic reactions to stings.</li> <li>~ Ensure crew members have medication pens if needed.</li> <li>~ Perform daily self inspection.</li> <li>~ Use repellent as necessary.</li> <li>~ Advanced Life Support, multi-dose epi and airway protection.</li> <li>~ Keep affected area clean and bandaged.</li> <li>~ Be extra careful when eating and/or drinking to avoid stings to mouth and throat.</li> </ul>



## INCIDENT SAFETY ANALYSIS 215a

ALL	Chain Saw Operations	<ul style="list-style-type: none"> <li>~ Follow "Hazard Tree Safety" guidelines, IRPG page 22</li> <li>~ Look up, Look down, Look around for hazard tree indicators.</li> <li>~ Only fell and trees within your expertise, and training.</li> <li>~ Follow "Procedural Felling Operations" IRPG page 85.</li> <li>~ Do not fall trees during high wind events.</li> <li>~ Ensure proper use of all required PPE.</li> </ul>
ALL	Haz Mat	<ul style="list-style-type: none"> <li>~ Contact Resource Advisor for information about hazmat sites.</li> <li>~ Stay away from containers with unknown contents.</li> <li>~ Hazmat material in and around structures is likely, stay away from structures after treated for defensible space.</li> <li>~ Watch out for areas of dead/dying vegetation indication possible toxic chemicals.</li> <li>~ Munitions are likely in cabins within the fire area.</li> <li>~ Small buildings may be used fuel storage so avoid them.</li> </ul>
ALL	Hazard Trees	<ul style="list-style-type: none"> <li>~ Follow "Hazard Tree Safety" guidelines, IRPG page 22</li> <li>~ Look up, Look down, Look around for hazard tree indicators.</li> <li>~ Only fell and trees within your expertise, and training.</li> <li>~ Follow "Procedural Felling Operations" IRPG page 85.</li> <li>~ Do not fall trees during high wind events.</li> <li>~ Ensure proper use of all required PPE.</li> </ul>
ALL	Heavy Smoke and Dust	<ul style="list-style-type: none"> <li>~ Rotate firefighters around so no one is in heavy smoke for prolonged periods.</li> <li>~ Take frequent breaks in clean air when working in areas of smoke or thick dust.</li> <li>~ Locate camps outside of the area of heavy smoke.</li> <li>~ Use dust abatement on heavily traveled roads.</li> </ul>

### Critical Logistical Locations - 9/7/2020

Type	Label	Lat WGS84	Long WGS84
Dip Site	Fairway Dip	39° 26.821' N	122° 59.924' W
Dip Site	Hammerhorn Lake Dip	39° 56.000' N	122° 59.000' W
Dip Site	Howard's Lake Dip	39° 52.768' N	122° 59.542' W
Dip Site	Lake Pillsbury Dip	39° 25.745' N	122° 57.134' W
Dip Site	Plaskett Dip	39° 43.542' N	122° 50.518' W
Drop Point	DP-1	39° 47.657' N	122° 56.138' W
Drop Point	DP-10	39° 36.890' N	122° 58.290' W
Drop Point	DP-11	39° 27.910' N	122° 53.605' W
Drop Point	DP-12	39° 33.545' N	122° 35.397' W
Drop Point	DP-13	39° 34.703' N	122° 51.978' W
Drop Point	DP-14	39° 41.887' N	122° 59.497' W
Drop Point	DP-15	39° 30.586' N	122° 56.267' W
Drop Point	DP-16	39° 31.401' N	122° 56.468' W
Drop Point	DP-17	39° 31.906' N	122° 56.994' W
Drop Point	DP-18	39° 31.121' N	122° 42.884' W
Drop Point	DP-19	39° 27.788' N	122° 44.422' W
Drop Point	DP-2	39° 51.584' N	122° 55.413' W
Drop Point	DP-3	39° 52.630' N	122° 57.002' W
Drop Point	DP-4	39° 55.042' N	122° 40.715' W
Drop Point	DP-5	39° 53.605' N	122° 42.352' W
Drop Point	DP-6	39° 43.980' N	122° 50.590' W
Drop Point	DP-7	39° 42.960' N	122° 48.670' W
Drop Point	DP-8	39° 39.121' N	122° 48.318' W
Drop Point	DP-9	39° 38.570' N	122° 47.320' W
Drop Point	DP-21	39° 56.295' N	122° 45.480' W
Drop Point	DP-22	39° 58.593' N	122° 44.778' W
Drop Point	DP-23	39° 43.138' N	123° 00.395' W
Drop Point	DP-24	40° 12.747' N	123° 08.388' W
Drop Point	DP-25	40° 10.551' N	123° 07.591' W
Drop Point	DP-26	40° 09.828' N	123° 08.042' W
Drop Point	DP-27	40° 08.340' N	123° 07.926' W
Helispot	H-0	39° 22.323' N	122° 32.048' W
Helispot	H-1	39° 39.221' N	122° 43.032' W
Helispot	H-10	39° 31.492' N	122° 50.756' W
Helispot	H-11	39° 34.407' N	122° 42.162' W
Helispot	H-12	39° 27.743' N	122° 44.431' W
Helispot	H-13	39° 30.779' N	122° 46.413' W
Helispot	H-2	39° 43.028' N	122° 52.132' W
Helispot	H-4	39° 50.777' N	122° 57.877' W
Helispot	H-5	40° 06.837' N	123° 04.964' W
Helispot	H-7	39° 23.367' N	122° 43.896' W
Helispot	H-9	39° 47.500' N	122° 55.000' W
Water Source		39° 26.427' N	122° 45.960' W
Water Source		39° 43.172' N	122° 53.428' W

## Division/Group Assignment List (ICS 204)

Incident Name <b>August Complex</b>		Branch <b>I</b>	Division/Group <b>A</b>		
Operational Period 0700 – 1900		Date 09/07/2020			
<b>Operations Personnel</b>					
North Zone Ops	Dwight Snow	Division Supervisor	Robert Wood / R. Hoyle (T) LWD 9/16		
Planning Ops	Jon Wallace / Aaron Gay (T)	Air Attack Sup. No.			
Branch Director	Mike Brunson / Tim Nutley (T)				
<b>Resources Assigned this Period</b>					
Strike Team/Task Force/ Resource Designator	LWD	Leader	# Persons	Drop Off PT./Time	Pick Up PT./Time
A1 California Smokejumpers*	9/6	Matt Weston	7		
C-9 HC1 Eldorado	9/16	Ben Strahan	20		
E-34 ENG3 Fire Trax 357	9/15	Brad Martin	3		
E-182 ENG3 DS Fire 14	9/8	Robert Degnall	3		
E-494 ENG3 Carbondale and Rural FPD 83	9/19	Dean Perkins, Jr.	3		
E-519 ENG3	9/15	Casey Hoffman	4		
E-93 ENG4 JD Forestry 2*	9/6	Alberto Garcia	3		
E-200 ENG4 Castle Mountain	9/8	James Huckelba	3		
E-31 ENG5 Alaska Wildland Fire 51	9/24	Brian Terry	3		
E-130 ENG6 Alpine Wildfire 8	9/12	Jake Heckathorn	3		
E-191 ENG6 Williams Wildland Fire	9/14	Willie Newsome	3	(Mechanical Issues)	
E-174 DO22 Kit Company	9/9	Ike Thomason	1		
E-175 DO22 Jake Lovato Trucking	9/7	Jacob Lovato	1		
E-475 DO22 Mann's Dozer	9/13	Patrick Mann	1		
E-274 DO22 Duke's Equipment	9/14	Timothy Duke	2		
E-276 DO22 Trambley Construction	9/15	Frank Trambley	1		
E-277 DO22 K&B Timberworks	9/16	James Keller	2		
E-113 WT2 Dustbusters LLC	9/9	Michael Edwards	1		
E-264 WT2 Tobiasson Water	9/8	Raynold Tobiasson	2		
E-373 MAST Allen's Water Tender Service	9/9	Christy Price	1		
E-428 MAST Brad Ingram Construction	9/18	Brad Ingram	1		
O-695 TFLD	9/19	Brian Pippin	1		
O-67 TFLD	9/7	Brendon McNeil	1		
O-566 HEQB	9/17	Corey Farrell	1		
O-567 HEQB	9/16	Clay Cooper	1		
O-564 HEQB	9/11	Stephen Siemion	1		
O-573 HEQB(T)	9/14	Juan Palacios	1		
O-563 HEQB(T)	9/15	Randall McLain	1		
O-630 HEQB(T)	9/17	Russell Dean	1		
O-401 FMOD Pacific Ridge Felling Mod	9/12	Adam Miller	2		
O-403 FMOD Art of Felling Trees	9/12	Roy Hauser	2		
E-407 CHIP Grayback Forestry	9/14	Jared Cournoyer	2		
E-408 CHIP GE Forestry 1 (not checked in)	9/14	Corbin Anderson	2		
E-410 CHIP Archer Mountain Enterprises	9/15	Justus Barton	2		
E-411 CHIP Blue Sky Tree	9/16	Dylan Badgely	2		
E-412 CHIP GE Forestry 2 (not checked in)	9/17	Jess Raper	2		

Incident Name <b>August Complex</b>			Branch <b>I</b>	Division/Group <b>A</b>		
Operational Period 0700 - 1900			Date 09/07/2020			
<b>Resources Assigned this Period</b>						
Strike Team/Task Force/ Resource Designator	LWD	Leader	# Persons	Drop Off PT./Time	Pick Up PT./Time	
O-78 SOF2	9/9	Larry Connell	1		Anthony Peak Lookout	
O-232 SOFR	9/13	Jeff Kerr	1		Anthony Peak Lookout	
O-421 READ	9/10	Derek Eysenbach	1			
O-495 REAF(T)	9/16	Peter Anderer	1			
O-210 EMTF	9/6	Derek Leong	1			
<b>Control Operations/Work Assignments:</b>						
<p>(1) Continue improving line and firing. (2) Conduct tactical burnouts according to Division Supervisor in advance of fire approaching line to DP1. (3) Contain and mop up spot fire and integrate into primary line where possible. (4) Coordinate with FMODs, chippers, and military assets to prep roadside for use as potential future containment lines.</p> <p style="text-align: right;">x = not checked in.</p>						
<b>Special Instructions:</b>						
<p>Use caution around snags and flag as needed for safety; Use caution when driving on roadways and on the fireline; Backhaul excessive equipment and trash. Follow all COVID protocols and precautions; READS will call DIVS when entering.</p> <p style="text-align: right;">*Extension request may be pending.</p>						
<b>Division/Group Communication Summary</b>						
Function	Channel Name	RX Frequency N/W	RX Tone/NAC	TX Frequency N/W	TX Tone/NAC	Mode
COMMAND	CMD 4	172.6750	T4 / 136.5	163.0375	T4 / 136.5	
TACTICAL	NIFC T5	166.7250	T4 / 136.5	166.7250	T4 / 136.5	
AIR TO GROUND	CDF T15	159.2700	192.8	159.2700	192.8	
Prepared by RESL(T) Steverson Moffat		Approved by PSC1(T) Greg Sanders			Date 09/06/20	Time 2000

## Division/Group Assignment List (ICS 204)

Incident Name <b>August Complex</b>			Branch <b>I</b>	Division/Group <b>A</b>		
Operational Period 0700 - 1900			Date 09/07/2020			
<b>Operations Personnel</b>						
North Zone Ops	Dwight Snow		Division Supervisor	Robert Wood / R. Hoyle (T) LWD 9/16		
Planning Ops	Jon Wallace / Aaron Gay (T)		Air Attack Sup. No.			
Branch Director	Mike Brunson / Tim Nutley (T)					
<b>Resources Assigned this Period</b>						
Strike Team Alpha	LWD	Leader	# Persons	Drop Off PT./Time	Pick Up PT./Time	
STLM	9/25	J. Platt (Please contact check-in)	1			
STLM(T)	9/25	T. Piehl (Please contact check in)	1			
STML	9/25	CPT T. David / 1SG G. Carrasquillo	2			
Rugged 1	9/25	N. Biedscheid / J. Bybee / 1LT Catalano / SFC DeRosa	22			
Rugged 2	9/25	C. Brown / D. Needham / 1LT Collings / SFC Miles	22			
Rugged 3	9/25	P. Ahrensbrak / J. Pace / 1LT Fromm / SFC Zizelman	22			
Billings IA Alpha 1	9/25	P. Tangen	5			
Rugged crews will be off line and in staging pending outcome of forecast wind event.						
<b>Control Operations/Work Assignments</b>						
<ul style="list-style-type: none"> <li>Work closely with FMODs and chippers to prep roadside to Division Supervisor's standards for use as potential future containment lines.</li> </ul>						
<b>Special Instructions:</b>						
Use caution around snags and flag as needed for safety; Use caution when driving on roadways and on the fireline; Backhaul excessive equipment and trash. Follow all COVID protocols and precautions; READS will call DIVS when entering.						
<b>Division/Group Communication Summary</b>						
Function	Channel Name	RX Frequency N/W	RX Tone/NAC	TX Frequency N/W	TX Tone/NAC	Mode
COMMAND	CMD 4	172.6750	T4 / 136.5	163.0375	T4 / 136.5	
TACTICAL	NIFC T5	166.7250	T4 / 136.5	166.7250	T4 / 136.5	
AIR TO GROUND	CDF T15	159.2700	192.8	159.2700	192.8	
Prepared by RESL(T) Steverson Moffat			Approved by PSC1(T) Greg Sanders		Date 09/06/20	Time 2000

## Division/Group Assignment List (ICS 204)

Incident Name <b>August Complex</b>				Branch <b>I</b>		Division/Group <b>C</b>	
Operational Period 0700 - 1900				Date 09/07/2020			
<b>Operations Personnel</b>							
North Zone Ops		Dwight Snow		Division Supervisor		K. Carpenter LWD 9/11 / Brian Johnson (T) LWD 9/9	
Planning Ops		Jon Wallace / Aaron Gay (T)		Air Attack Sup No.			
Branch Director		Mike Brunson / Tim Nutley (T)					
<b>Resources Assigned this Period</b>							
Strike Team/Task Force/ Resource Designator		LWD	Leader	# Persons	Drop Off PT./Time	Pick Up PT./Time	
C-11 Mad River		9/16	Tad Hair	20			
C-98 T2IA Firestorm		9/13	Alex Rhea	20			
E-53 ENG3 Rogue Valley*		9/6	Stuart Johnson	3			
E-24 ENG3 Wildfire Support 316		9/9	Jonald Lowe	3	Will be O/S 9/10-9/11		
E-490 ENG3 Interior 3-7		9/20	-	3			
E-13 ENG6 Smokin Ridge 311		9/10	Fred Deffer	4	Will be O/S 9/11-9/12		
E-14 ENG6 Rocky Point		9/9	Kevin Trapp	3			
E-511 ENG6 Rocky Mtn Fire & Timber		9/18	Trevor Scott	3			
E-512 ENG6 TGF Forestry and Fire		9/10	Anthony Longbucco	3			
<del>E-516 ENG6 Crown Chasers</del>		<del>9/19</del>	<del>Tyler Dehiya</del>	<del>3</del>	<i>INVOLVED ACCIDENT BEFORE GETTING FIRED IN WITH DIVC</i>		
E-534 ENG6 Bishop 005		9/19	John Mount	3			
E-48 DOZ2 Wycoff		9/16	Billy Wycoff	1			
E-275 DOZ2 Black Range		9/17	Timothy Pearson	1			
E-52 WT Dietz 106		9/16	Richard McGowan	2			
E-21 WTS2 Partridge Const 14		9/12	Warren Partridge	1			
O-301 TFLD		9/16	Ryan Shannahan	1			
O-614 TFLD(T)		9/17	Bjorn Troberg	1			
O-626 TFLD(T)		9/17	Bill Bettencourt	1			
O-564 HEQB		9/11	Stephen Siemion	1			
O-569 HEQB		9/17	Bryan Cordes	1			
O-568 HEQB		9/17	Ricardo Rubio	1			
O-572 HEQB(T)		9/11	Kyle Avesing	1			
O-235 FMOD Pacific Ridgeline		-	Gabriel Satela	2	O/S 9/7-9/8. Return 9/9		
O-236 FMOD Tacoma Fallers		9/12	Tacoma Manuel				
O-511 FMOD Fallers Inc 1		9/17	Jerry Heinecke	2			
O-512 FMOD Fallers Inc 2		9/17	Kevin Reed	2			
O-78 SOF2		9/9	Larry Connell	1		Anthony Peak Lookout	
O-232 SOFR		9/13	Jeff Kerr	1		Anthony Peak Lookout	
O-318 EMTF		9/9	John Buchan	1			
O-321 EMPF		9/9	Bryan Warner	1			
<b>Control Ops/Assignments:</b> Continue holding M2 road. Conduct tactical burnouts to stay ahead of main fire. Coordinate closely with Crane Mills resources.							
<b>Special Instructions:</b> Use caution around snags and flag as needed for safety. Use caution when driving on roadways and on the fireline. Backhaul excessive equipment and trash. Follow all COVID protocols and precautions. READS will call DIVS when entering. *Extension?							
<b>Division/Group Communication Summary</b>							
Function	Channel Name	RX Frequency N/W	RX Tone/NAC	TX Frequency N/W	TX Tone/NAC	Mode	
COMMAND	CMD 4	172.6750	T4 / 136.5	163.0375	T4 / 136.5		
TACTICAL	NIFC T6	166.7750	T4 / 136.5	166.7250	T4 / 136.5		
AIR TO GROUND	CDF T15	159.2700	192.8	159.2700	192.8		
Prepared by RESL(T) Steverson Moffat			Approved by PSC1(T) Greg Sanders			Date 09/06/20	Time 2000

## Division/Group Assignment List (ICS 204)

<b>Incident Name</b> <b>August Complex</b>			<b>Branch</b> <b>I</b>		<b>Division/Group</b> <b>D</b>	
<b>Operational Period 0700 - 1900</b>			<b>Date</b> 09/07/2020			
<b>Operations Personnel</b>						
<b>North Zone Ops</b>		Dwight Snow		<b>Division Supervisor</b>		Howard Deets / K. Valdiviez LWD 9/10
<b>Planning Ops</b>		Jon Wallace / Aaron Gay (T)		<b>Air Attack Sup No.</b>		
<b>Branch Director</b>		Mike Brunson / Tim Nutley (T)				
<b>Resources Assigned this Period</b>						
<b>Strike Team/Task Force/ Resource Designator</b>		<b>LWD</b>	<b>Leader</b>	<b>Number Persons</b>	<b>Drop Off PT./Time</b>	<b>Pick Up PT./Time</b>
C-64	IHC Big Bear	9/10	Howard Deets	20		
C-93	HC2 OC 22	9/8	Rex Sundstrom	20		
E-494	ENG3 Carbondale and Rural FPD 83	9/19	Dean Perkins	3		
E-195	ENG6 DB Jet	9/8	Robert Chandler	3		
E-15	ENG6 Texas Fire Service 55	9/10	Carlos Magana	3		
E-196	ENG6 SE Forest Resources	9/12	Steve Guckian	2		
E-192	ENG6 Arkansas 631	9/10	Kory Garrie	3		
E-173	DOZ2 Tough Company 02	9/8	Jeremy Todd	2		
E-172	DOZ2 D17 Ben Trucking	9/8	Arnie Torres	2		
E-18	DOZ2 Rosevear LLC	9/10	Carl Steinmann	2		
E-270	DOZ2 CM DOZ	9/9	-	2		
E-498	WTT2 Grayback Forestry	9/18	Josh Miner	1		
O-337	TFLD(T)	9/6	Bradly Taylor	1		
O-380	HEQB	9/9	Kelley Wyman	1		
O-342	STEQ	9/9	Trent Duncan	1		
O-232	SOFR2	9/13	Steven Counts	1		
O-392	REAF	9/11	Jackie Beidl	1		
O-502	EMPF	9/13	Shawn Clark	1		
<b>Control Operations/Work Assignments:</b>						
(1) Hold and improve line along north flank of the fire. (2) Coordinate closely with Crane Mills resources to protect private landholdings. (3) Coordinate closely with CalFire DIV YY.						
<b>Special Instructions</b>						
Use caution around snags and flag as needed for safety; use caution when driving on roadways and on the fire line. Follow all COVID protocols and precautions. READS will call DIVS when entering. <span style="float: right;">*Extension request may be pending.</span>						
<b>Division/Group Communication Summary</b>						
<b>Function</b>	<b>Channel Name</b>	<b>RX Frequency N/W</b>	<b>RX Tone/NAC</b>	<b>TX Frequency N/W</b>	<b>TX Tone/NAC</b>	<b>Mode</b>
COMMAND	CMD 3	170.6875	T4 / 136.5	166.5750	T4 / 136.5	
TACTICAL	NIFC T1	168.0500	T4 / 136.5	168.0500	T4 / 136.5	
AIR TO GROUND	CDF T15	159.2700	192.8	159.2700	192.8	
<b>Prepared by RESL(T) Steverson Moffat</b>			<b>Approved by PSC1(T) Greg Sanders</b>		<b>Date 09/06/20</b>	<b>Time 2000</b>

## Division/Group Assignment List (ICS 204)

Incident Name <b>August Complex</b>		Branch <b>V</b>	Division/Group <b>W</b>			
Operational Period 0700 - 1900		Date 09/07/2020				
<b>Operations Personnel</b>						
North Zone Ops	Dwight Snow	Division/Group Supervisor		Mike Malcolm / Jessica Vincent (T)		
Planning Ops	Jon Wallace / Aaron Gay (T)	Air Attack Supervisor No.				
Branch Director	Michael Heard / Shawn Nagle (T)					
<b>Resources Assigned this Period</b>						
Strike Team/Task Force/ Resource Designator	LWD	Leader	# Persons	Drop Off PT./Time	Pick Up PT./Time	
E352 ENG3 Shasta-Trinity	9/9	Mike Gregory	5			
E313 ENG3 Shasta-Trinity	9/11	Elliot Groo	5			
E108 ENG3 J3 Contracting	9/12	Curtis	3			
E79 ENG3 Alder Creek	9/6	Esai Jasso	3			
E66 WT2 Shasta-Trinity	9/11	Thaddeus Eason	1			
E-X DOZ4 6RNF	9/14	Dylan & Moore	2			
E-59 DOZ2 Lone Star	9/9	N. Stemple	1			
E66 Excavator Stoney Creek	9/9	Luke Andrew	1			
TFLD (T)	9/12	Keith Rohrs	1			
HEQB	-	Jack Turner	1			
HEQB	-	Cody Camara	1			
O-404 FMOD Jamison General Land Mgmt.	9/13	Lawrence Dolezal	2			
O-505 FMOD Payette Tree Service	9/17	John Bellrose	2			
O-555 SOFR (Please Contact Check-in)	9/14	Jason Jones	1			
O-721 REAF	9/9	Matthew Padilla	1			
O-720 REAF	9/12	Anna Plum	1			
O-329 EMPF	9/9	Kevin Klytta	1			
<b>Control Operations/Work Assignments:</b>						
<ul style="list-style-type: none"> <li>• Monitor fire in wilderness.</li> <li>• Construct direct and indirect line construction on the Shasta-Trinity National Forest. Hold existing line.</li> <li>• Coordinate with resources on Shasta-Trinity National Forest and the Six Rivers National Forest.</li> </ul>						
<b>Special Instructions:</b>						
Use caution around snags and flag as needed for safety; Use caution when driving on roadways and on the fireline; Backhaul excessive equipment and trash. Follow all COVID protocols and precautions; READS will call DIVS when entering.						
<b>Division/Group Communication Summary</b>						
Function	Channel Name	RX Frequency N/W	RX Tone/NAC	TX Frequency N/W	TX Tone/NAC	Mode
COMMAND	CMD 5	173.7500	T4 / 136.5	163.8250	T4 / 136.5	
TACTICAL	NIFC T2	168.2000	T4 / 136.5	168.2000	T4 / 136.5	
AIR TO GROUND	CDF T15	159.2700	192.8	159.2700	192.8	
Prepared by RESL(T) Steverson Moffat		Approved by PSC1(T) Greg Sanders		Date 09/06/20	Time 2000	



## Division/Group Assignment List (ICS 204)

Incident Name <b>August Complex</b>			Branch <b>II</b>		Division/Group <b>T</b>	
Operational Period 0700 - 1900			Date 09/07/2020			
<b>Operations Personnel</b>						
South Zone Ops	Paul Reynolds / Derrick Moore (T)		Division/Group Supervisor		Rocky Beery / Frank Alves (T) / Kory Bowser (T)	
Planning Ops	Jon Wallace / Aaron Gay (T)		Air Attack Supervisor No.			
Branch Director	Michael Womack / Kerry Clark (T)					
<b>Resources Assigned this Period</b>						
Strike Team/Task Force/ Resource Designator	LWD	Leader	# Persons	Drop Off PT./Time	Pick Up PT./Time	
E-187 ENG3 Outback Fire	9/8	Lance Wolleboek	4			
E-39 ENG3 Shiloh 215	9/18	Ron Thalacker	3			
E-521 ENG3 CA YICC 77 (Check-in pending)	-					
E-523 ENG3 MNF 344	9/19	Matt Baskin	3			
E-518 ENG3 CA-MICC 64	9/19	Frank Bojorquez	5			
E-489 ENG3 Big Red Altergott 31	9/19	Adam Altergott	3			
E-517 ENG3 CA-MICC 8531	9/19	Kyle Bonham	5			
E-524 ENG3 Modoc 34	9/19	Richard Trotts	5			
E-513 ENG4 J3 Contracting	9/13	Alvin Klotz	3			
E-12 ENG6 Clearwater	-	Paul Shultz	3	O/S 9/7-9/8 Return 9/9		
E-16 ENG6 Criddle 60	9/19	Paul Criddle	3			
E-11 ENG6 Sundance	9/19	Matt Abbe	3			
E-194 ENG6 Stark Corporation	9/10	Tommy Pavao	3			
E-510 ENG6 Duluth INTL E-713	9/18	Clayton Rakes	4			
E-515 ENG6 Twin Lakes 56	9/18	Ryan Mattila	2			
E-17 DOZ2 Humphrey	9/9	Ron Humphrey	2			
E-425 DOZ2 MNF3	9/12	Derek Lamb	1			
E-135 DOZ2 Dodge Boys Excavating	9/9	Jeff Werry	1			
E-27 WT Precision Towing 36	9/7	Larry Jensen	1			
E-115 WT Outdoor Vac Services	9/8	David Antley	2			
E-427 SKD2 Coastal Mountain Timber	9/17	Joel Alter	1			
O-366 TFLD	9/11	Jason Wickhizer	1			
O-360 TFLD	9/11	Dale Woitas	1			
O-397 FMOD God and Country	9/13	William Ries	2			
O-503 FMOD Swedberg Contracting	9/17	Justin Foss	2			
O-505 FMOD Payette Tree Service	9/17	John Bellrose	2			
O-504 FMOD White Horse Forestry	9/18	Ronald White	2			
O-219 SOF2	9/7	Troy Floyd	1			
O-623 SOFR	9/11	Jeff Henderson	1			
O-494 READ	9/19	Matt Nourmohamadian	1			
O-519 REAF	9/13	Jason Martin	1			
O-621 REAF(T)	9/17	Lauren Hoyle	1			
O-497 REAF	9/7	Bob Weaver	1			
O-553 REAF	9/17	Lance Sargent	1			
REAF (Check-in Pending)	-	Jesse Irwin	1			
REAF (Check-in Pending)	-	Mike Doyle	1			
O-324 EMPF	9/9	John Moody	1			
Control Operations/Work Assignments: (1) Mop up and patrol around Lee Logan Camp. (2) Continue firing operations along the M1 road heading north. <b>Special Instructions-</b> Contact READ for locations of naturally occurring asbestos. READS will call DIVS when entering.						
<b>Division/Group Communication Summary</b>						
Function	Channel Name	RX Frequency N/W	RX Tone/NAC	TX Frequency N/W	TX Tone/NAC	Mode
COMMAND	CMD 6	170.0500	T4 / 136.5	167.0750	T4 / 136.5	
TACTICAL	NIFC T3	168.6000	T4 / 136.5	168.6000	T4 / 136.5	
AIR TO GROUND	A/G TAC	172.3500		172.3500		
Prepared by RESL(T) Steverson Moffat		Approved by PSC1(T) Greg Sanders			Date 09/06/20	Time 2000

## Division/Group Assignment List (ICS 204)

Incident Name <b>August Complex</b>			Branch <b>II</b>		Division/Group <b>V</b>	
Operational Period 0700 - 1900			Date 09/07/2020			
<b>Operations Personnel</b>						
<b>South Zone Ops</b>		Paul Reynolds / Derrick Moore (T)		<b>Division/Group Supervisor</b>		Vic Doig LWD 9/8 / Colten Moor (T)
<b>Planning Ops</b>		Jon Wallace / Aaron Gay (T)		<b>Air Attack Supervisor No.</b>		
<b>Branch Director</b>		Michael Womack / Kerry Clark (T)				
<b>Resources Assigned this Period</b>						
<b>Strike Team/Task Force/ Resource Designator</b>		<b>LWD</b>	<b>Leader</b>	<b># Persons</b>	<b>Drop Off PT./Time</b>	<b>Pick Up PT./Time</b>
E-179	ENG3 Treasure Valley 3491*	9/6	John Hovey	3		
E-520	ENG3 CA-YICC 326	9/14	Kevin Tkoch	3		
E-522	ENG3 CA-SIFC 35	9/15	Scott Flynn	5		
E-185	ENG6 Windswept 604	9/8	Chris Schiuefelbein	3		
E-197	ENG6 Bird Dog Fire	9/12	Jesse Schmidt	3		
E-273	DOZ2 STF 52	9/11	Craig Martin	2		
E-136	DOZ2 Westland	9/11	Gary Quinones	1		
E-281	DOZ2 North State	9/11	George Poe	1		
E-116	WTS2 Rocky Point 101	9/7	Shawn Shelevy	1	O/S 9/8-9/9 Return 9/10	
E-262	WTS1	9/8	Dave Pierce	1		
E-539	WTT2	9/19	Jordan Azbill	1		
E-273.1	TFLD(T)	9/11	Anthony Maciel	1		
<del>O-149</del>	TFLD (T) <i>O-144</i>	9/11	Lem Johnson	1		
O-398	FMOD North Zone Fallers	9/12	Bill Smith	2		
O-399	FMOD Alaska Cutter 1	9/12	James LeClair	2		
E-413	CHIP Pacific Ridgeline Forestry	9/15	Kade Doyle	2		
E-406	CHIP Rogue River Fire, Water, & Bld.	9/14	Austin Hultema	2		
E-414	CHIP Sunkler <i>HARRISCREW</i>	9/14	Butch Sunkler	2		
O-219	SOF2	9/7	Troy Floyd	1		
O-623	SOFR	9/11	Jeff Henderson	1		
O-494	READ	9/19	Matt Nourmohamadian	1		
O-519	REAF	9/13	Jason Martin	1		
O-621	REAF(T)	9/17	Lauren Hoyle	1		
O-553	REAF	9/17	Lance Sargent	1		
	REAF (Check-in Pending)	-	Jesse Irwin	1		
	REAF (Check-in Pending)	-	Mike Doyle	1		
O-324	EMPF	9/18	Ryan Howard	1		
<b>Control Operations/Work Assignments:</b> (1) Continue prepping along the M1 road. (2) Complete prepping and plumbing Doan Ridge. Coordinate with FMODs, chippers, and military assets.						
<b>Special Instructions:</b> Use caution around snags and flag as needed for safety; use caution when driving on roadways and on the fire line; backhaul excessive equipment and trash. Follow all COVID protocols and precautions. Contact READ for locations of naturally occurring asbestos. READS will call DIVS when entering. <span style="float: right;">*Extension may be request pending</span>						
<b>Division/Group Communication Summary</b>						
<b>Function</b>	<b>Channel Name</b>	<b>RX Frequency N/W</b>	<b>RX Tone/NAC</b>	<b>TX Frequency N/W</b>	<b>TX Tone/NAC</b>	<b>Mode</b>
COMMAND	CMD 6	170.0500	T4 / 136.5	167.0750	T4 / 136.5	
TACTICAL	NIFC T7	168.2500	T4 / 136.5	168.2500	T4 / 136.5	
AIR TO GROUND	A/G TAC	172.3500		172.3500		
Prepared by RESL(T) Steverson Moffat		Approved by PSC1(T) Greg Sanders			Date 09/06/20	Time 2000

## Division/Group Assignment List (ICS 204)

Incident Name <b>August Complex</b>				Branch <b>II</b>		Division/Group <b>V</b>	
Operational Period 0700 - 1900				Date 09/07/2020			
<b>Operations Personnel</b>							
South Zone Ops		Paul Reynolds / Derrick Moore (T)		Division/Group Supervisor		Vic Doig / Colten Moor (T)	
Planning Ops		Jon Wallace / Aaron Gay (T)		Air Attack Supervisor No.			
Branch Director		Michael Womack / Kerry Clark (T)					
<b>Resources Assigned this Period</b>							
Strike Team Bravo		LWD	Leader	Number Persons	Drop Off PT./Time	Pick Up PT./Time	
STLM		9/25	Wiedow	1			
STLM		9/25	Rooper	1			
STML		9/25	CPT Watts / 1SGT King	2			
Rugged 4		9/25	Cordell / Hahn / 2LT Cooper	22			
Rugged 5		9/25	Lucer / Crowell / 2LT Penninger	22			
Rugged 6		9/25	Orsen / Allen / 2LT Barton	22			
Billings IA Bravo 2		9/25	Lorix	5			
SOFR		9/25	J. Drazinski	1			
Rugged crews will be off line and in staging pending outcome of forecast wind event.							
<b>Control Operations/Work Assignments:</b>							
<ul style="list-style-type: none"> <li>Work closely with FMODs and chippers to prep roadside to Division Supervisor's standards for use as potential future containment lines.</li> </ul>							
<b>Special Instructions:</b>							
Use caution around snags and flag as needed for safety; use caution when driving on roadways and on the fire line; backhaul excessive equipment and trash. Follow all COVID protocols and precautions.							
Contact READ for locations of naturally occurring asbestos. READS will call DIVS when entering.							
<b>Division/Group Communication Summary</b>							
Function	Channel Name	RX Frequency N/W	RX Tone/NAC	TX Frequency N/W	TX Tone/NAC	Mode	
COMMAND	CMD 6	170.0500	T4 / 136.5	167.0750	T4 / 136.5		
TACTICAL	NIFC T7	168.2500	T4 / 136.5	168.2500	T4 / 136.5		
AIR TO GROUND	A/G TAC	172.3500		172.3500			
Prepared by RESL(T) Steverson Moffat			Approved by PSC1(T) Greg Sanders			Date 09/06/20	Time 2000

## Division/Group Assignment List (ICS 204)

Incident Name <b>August Complex</b>			Branch <b>IV</b>	Division/Group <b>O/R</b>	
Operational Period 0700 - 1900			Date 09/07/2020		
<b>Operations Personnel</b>					
South Zone Ops	Paul Reynolds / Derrick Moore (T)	Division Supervisor	Sinkovitz / Reyes (T) x / Springstead (T) 9/10		
Planning Ops	Jon Wallace / Aaron Gay (T)	Air Attack Sup No.			
Branch Director	James Sullivan		x = not checked in		
<b>Resources Assigned this Period</b>					
Strike Team/Task Force/ Resource Designator	LWD	Leader	Number Persons	Drop Off PT./Time	Pick Up PT./Time
C-60 HC1 Elk Mountain	9/6	Jimmy Fox	19		
C-100 IHC Valyermo	9/15	Matthew Ramstead	20		
C-31 HC2 Torres	9/7	Emilio Peralta	20		
C-44 HC2 OC 21	9/10	John Cox	20		
C-58 HC2 Franco C8	9/9	Cisneros	20		
E-183 ENG3 Archer Mountain 15	9/13	Tom Hatton	3		
E-389 ENG3 KNF E-25 (Night Ops)	9/12	Philip Parashis	5		
E-390 ENG3 KNF E-378 (Night Ops)	9/12	Ben Grotting	5		
E-33 ENG3 J3 Contracting 9 (Night Ops)	9/7	Ryan Mitchell	3		
E-491 ENG3 Spearfish Engine 3-31	9/18	Bill Wenzel	3		
E-492 ENG3 Platte Valley FPD 3733	9/20	Alex Haak	3		
E-23 ENG3 Spence Industrial (Crew swap 9/7 and 9/8)	-	Galen Pawson	3		
E-X ENG6 HB Forestry	-	Hartman	3		
E-X ENG6 Rocky Point	-	Flores	3		
E-199 ENG6 Wildland Fire Services (Night Ops)	9/12	David Hogrefe	3		
E-198 ENG6 Wildlands 23 (Changing to Day Ops)	9/12	Darryn Warner	3		
E-509 ENG6 Caye Wildfire EVCS (Night Ops)	9/18	-		(Check-in pending)	
E-511 ENG6 Rocky Mtn Fire & Timber (Night Ops)	9/18	Trevor Scott	3		
E-512 ENG6 TGF Forestry and Fire (Night Ops)	9/10	Anthony Longbucco	3		
E-387 ITAC3 FS TF8	9/12	Augustin Rodriguez	26		
E-455 SKG1 Chapman	9/16	Chapman	1		
E-113 WTS2 Weber Fire 266	9/7	Kyle Braegger	1		
E-508 WTS2 Dustbusters	9/20	Greg Holt	1		
E-X WT2 KNF 21*	9/2	-	2		
C-60.2 TFLD (Elk Mountain)	9/6	Jackson	1		
C-60.3 HEQB (T)	9/6	Knoll	1		
O-400 FMOD Kyle Jackson Tree Service	9/13	Kyle Jackson	2		
O-507 FMOD Firefallers	9/17	Mark Hitson	2		
O-510 FMOD Cut Rite Inc.	9/16	Troy Otto	2		
O-511 FMOD Fallers Inc.	9/17	-			
O-512 FMOD Fallers Inc	9/17	Jerry Heinecke	2		
<del>O-326 EMPF</del>	<del>9/10</del>	<del>Cody Bennett</del>	<del>1</del>		
<del>O-323 EMPF (Night Ops)</del>	<del>9/9</del>	<del>Rick Bostian</del>	<del>1</del>		
O-79 SOF2	9/9	Tommy Hawkins	1		
O-149 SOFR(T)	9/12	Brian Plume	1		
O-497 REAF	9/7	Bob Weaver	1		
O-553 READ	9/7	Lance Sargent	1		
O-325 EMPF O-325 & O-326 EMPF (Day Ops)	9/9 & 9/10	Chacanaca / Bennett	1		
O-626 EMTF & O-323 EMPF (Night Ops)	9/17 & 9/16	Roberts / Bostian	1		

Incident Name <b>August Complex</b>				Branch <b>IV</b>	Division/Group <b>O/R</b>	
Operational Period 0700 - 1900				Date 09/07/2020		
Control Operations/Work Assignments: (1) Work closely with READS. Utilizing natural and constructed lines, contain spot fire to the upper headwaters of Mendenhall Creek in the Yuki Wilderness. Consider utilizing closed Forest Service Road 20N65. (2) Continue to mop-up and hold the M1 road north of DP 17. (3) Utilize tactical burnouts to stay ahead of main fire along the M1 road.						
Special Instructions: Use caution around snags and flag as needed for safety; use caution when driving on roadways and on the fire line; backhaul excessive equipment and trash. Follow all COVID protocols and precautions; READS will call DIVS when entering.						
<b>Division/Group Communication Summary</b>						
Function	Channel Name	RX Frequency N/W	RX Tone/NAC	TX Frequency N/W	TX Tone/NAC	Mode
COMMAND	CMD 2	170.4125	T4 / 136.5	165.9625	T4 / 136.5	
TACTICAL	NIFC T1	168.0500	T4 / 136.5	168.0500	T4 / 136.5	
AIR TO GROUND	A/G TAC	172.3500		172.3500		
Prepared by RESL(T) Steverson Moffat		Approved by PSC1(T) Greg Sanders			Date 09/06/20	Time 2000



## Division/Group Assignment List (ICS 204)

Incident Name <b>August Complex</b>			Branch		Group <b>ROADS</b>	
Operational Period 0700 – 1900			Date 09/07/2020			
<b>Operations Personnel</b>						
Logs Chief		Chris Alford		Group Supervisor		Cesar Avilla
Ground Support		Randy Chapin		Air Attack Sup. No.		
<b>Resources Assigned this Period</b>						
Resource Designator		LWD	Leader	# Persons	Drop Off PT./Time	Pick Up PT./Time
E-398 GRD Billy Wycoff		9/13	-	1		
E-399 GRD Billy Wycoff		9/13	-	1		
E-474 GRD		x			(Check-in pending)	
E-20 WT2 Warren Partridge		9/19		1		
E-105 WT2 Hurlimann		9/21	Mark Hurlimann	1		
E-110 WTS2 Johnson		9/8		1		
E-111 WT2 Warren Partridge		9/8	Christina Partridge	1		
E-114 WT2 CD Tool		9/8	John Bronkhurst	1		
E-265 WT2 Cattlelack Ranch		9/8	Joey Carnation	1		
E-374 WT2 Willmore AG		9/10	Trevor Geiger	1		
E-461 WT2 North State Heavy Equip		x	Ron Friel	1	(Check-in pending)	
E-462 WT2 Bay Area Water		9/17	Marcus Lemus	1		
E-463 WT2 Bay Area Water		9/17	John Prince	1		
E-464 WT2 Harris Emergency		9/17	Bruce Johnson	1		
E-476 WT2 Santaquin VFD		9/17		1		
E-477 WT2		9/17	Mark Dauer	1		
E-478 WT2 Allied Water		x	Tom Wriighthouse	1	(Check-in pending)	
E-497 WT2		9/18	Tami Quinones	1		
E-507 WT2 Owe Equipment and Trucking		9/19	Robert Owen	1		
E-540 WT2 Daniauskus Precision		9/19	Gregory Carter	1		
Control Operations/Work Assignments:						
Continue improving the FH7 Road. Provide dust abatement for Stonyford Base Camp.						
x = not checked in.						
Special Instructions:						
Use caution when driving on roadways. Watch for snags. Maintain situational awareness of surroundings and fire activity. Follow all COVID protocols and precautions.						
*Extension request may be pending.						
<b>Division/Group Communication Summary</b>						
Function	Channel Name	RX Frequency N/W	RX Tone/NAC	TX Frequency N/W	TX Tone/NAC	Mode
COMMAND	CMD 4	172.6750	T4 / 136.5	163.0375	T4 / 136.5	
TACTICAL	NIFC T6	166.7750	T4 / 136.5	166.7750	T4 / 136.5	
AIR TO GROUND	CDF T15	159.2700	192.8	159.2700	192.8	
Prepared by RESL(T) Steverson Moffat		Approved by PSC1(T) Greg Sanders			Date 09/06/20	Time 2000

**AIR OPERATIONS SUMMARY**

ICS 220

Prepared By: Mike Mowery

Prepared Date: 9/06/2020

Prepared Time: 1800

<b>1. INCIDENT NAME:</b> August Complex	<b>2. OPS PERIOD DATE:</b> 9/07/2020	<b>START TIME:</b> 0700	<b>END TIME:</b> 1930	<b>SUNRISE:</b> 0643	<b>SUNSET:</b> 1931
--	---	----------------------------	--------------------------	-------------------------	------------------------

<b>3. REMARKS</b> (Safety Notes, Hazards, Air Operations Special Equipment, etc.): Track all dip site locations/number of dips/gallons taken. Track all drop locations/number of drops/gallons dropped. All GPS data to be collected in DEGREES, MINUTES, DECIMAL MINUTES format. Avoid Aerial Application of retardant/foam/agent within 300' of waterways, bodies of water, etc. If Retardant/foam/agent is dropped within these areas, immediately notify the AOB and provide the following information: Lat/Long, estimated number of gallons and a map detailing the area. <b>CAUTION: POWERLINES AND SMOKE</b> <b>DIP SITES:</b> No dipping out of Eel River and Black Butte Creek	<b>4. Helibase Information:</b> Orland Helibase 39 43.16 122 08.48  Willits Helibase 39 27.04 123 22.3  Stonyford Cargo (H-0) 39 22.32 122 34.04	<b>5. TFR's:</b> 6 point polygon  Altitude 12,000 ft.  NOTAM # 015450  Frequency: 124.2250 http://tfr.faa.gov
--	--	--

**SOUTH ZONE AIR OPERATIONS**

6. PERSONNEL	NAME	PHONE #	7. FREQUENCIES	RX	TX	8. Medevac: Copter 4 @ Redding on request ALS Hoist. 24 hrs. Request through Dispatch on Command repeater—Lat/Long and Vis. AIRTANKERS- order thru ATGS
AOBD	Mike Mowery	870-615-0287	Air Tactics FW	172.4500	172.4500	
AOBD-t	Mike O'Leary	239-336-9789	Rotor Victor-Primary Rotor Secondary	120.8750 124.2250	120.8750 124.2250	HLCO: 503 Bell 407 Will use available helicopter as platform or fixed wing for ATGS
ASGS	Bob Yeager	318-613-3683	Command 4 Repeater Linked	172.6750 Tone: T4 136.5	163.0375 Tone: T4 136.5	
Willits Helibase	Kenon Smith	530-559-5667	A/G Tactical-South	172.3500	172.3500	VLATs, Heavy Air tankers and SEATs as assigned.
Orland Helibase	Mike Stelp	530-306-5711	A/G Command	168.3375	168.3375	UAS pilots will be monitoring 168.3375 and may be working in the fire perimeter.
ATGS	Rick Thompson	970-209-6989	TOLC	172.1375	172.1375	
HLCO	Dave Phillips	209-770-0904	CALCORD Calif. Air Ambulance	156.0750 Tone 156.7 (T6)	156.0750 Tone 156.7 (T6)	Missions: Recon, Buckets, Retardant, Medevac, Air Attack, Jumpers/Paracargo Initial Attack w/in TFR, PSD w/ UAS Repeater placement and maintenance
N911HN Copter 4 Hoist	Glenn Dupont	805-284-1848	MNF Fire Net Air Guard	171.5500 168.6250 110.9	164.5000 T 1 2 5 6 9 168.6250 No Tone	



NORTH ZONE AIR OPERATIONS

6. PERSONNEL	NAME	PHONE #	7. FREQUENCIES	RX	TX
AOBD	Greg Bradshaw	949-887-2841	A/G Tactical-North	159.2700 Tone 192.8	159.2700 Tone 192.8
HLCO	Byron Vance	530-520-8651	A/G Command	168.3375	168.3375
HLCO	Tim Stepanovich	530-708-2718	Air Tactics	164.1375	164.1375
ATGS	S. McGregor	530-521-8748	A/A Rotor Victor	126.8750	126.8750
ATGS	S. Hawkins	530-990-5128			

9. Aircraft

FAA N#	TY	MAKE/MODEL	BASE	AVAIL	START	REMARKS	FAA	TY	MAKE/ MODEL	BASE	AVAIL	START	REMARKS
61AJ	1	CH-47D A-75	Willets	0700	0730	Ex, Buckets	UR-31	3	Drone	ICP	0700	0700	PSD, IR, Video
212HP	2	Bell 212 HP A-70	Willets	0700	0730	Buckets, Cargo Crews (Ex)	804PJ	1	H60 Blackhawk A-106	Orland	0700	0730	Buckets
Fireboss 211		Air Tractor 802	Redding	0700	0730	Water Scooping	911VR H-516	2	Bell 212 A-81	Orland	0700	0730	Ex, Buckets, Cargo, Crews
212		Air Tractor 802	Redding	0700	0730	Water Scooping	2LM	3	Bell 206 L4 A-83	Orland	0700	0730	Recon, Cargo, Buckets
214		Air Tractor 802	Redding	0700	0730	Water Scooping	403 402PJ	3	Bell 407	Orland	0700	0730	HLCO

INCIDENT RADIO COMMUNICATIONS PLAN I-205		1. INCIDENT NAME		2. DATE/TIME PREPARED		3. OPERATIONAL PERIOD DATE/TIME					
		August Complex North Ops		09/06/2020 1600		09/07/2020 - 07:00 TO 09/08/2020 - 0700					
4. BASIC RADIO CHANNEL UTILIZATION											
Ch #	Function	Channel Name	Assignment	RX Freq	NW	RX Tone/NAC	TX Freq	NW	TX Tone/NAC	Mode Analog (A) Digital (D) Mixed (M)	Remarks
1	COMMAND	CMD 8	UNASSIGNED	167.8375	N	T4 / 136.5	164.3875	N	T4 / 136.5	A	C62
2	COMMAND	CMD 2		170.4125	N	T4 / 136.5	165.9625	N	T4 / 136.5	A	Alder Springs - C10
3	COMMAND	CMD 3	DIV D	170.6875	N	T4 / 136.5	166.5750	N	T4 / 136.5	A	Round Mtn. - C11
4	COMMAND	CMD 4	DIVS A, C Roads Group	172.6750	N	T4 / 136.5	163.0375	N	T4 / 136.5	A	Anthony Peak - C38
5	COMMAND	CMD 5	DIV W	173.7500	N	T4 / 136.5	163.8250	N	T4 / 136.5	A	Tomhead - C40
6	TAC	NIFC T1	DIV D	168.0500	N	T4 / 136.5	168.0500	N	T4 / 136.5	A	
7	TAC	NIFC T3		168.6000	N	T4 / 136.5	168.6000	N	T4 / 136.5	A	
8	TAC	NIFC T5	DIV A	166.7250	N	T4 / 136.5	166.7250	N	T4 / 136.5	A	
9	TAC	NIFC T6	DIV C Roads Group	166.7750	N	T4 / 136.5	166.7750	N	T4 / 136.5	A	
10	TAC	NIFC T7		168.2500	N	T4 / 136.5	168.2500	N	T4 / 136.5	A	
11	IA TAC	NIFC T2	IA, DIV W	168.2000	N		168.2000	N		A	
12	COMMAND	CDF C7	ELHORN/ TATHAM	151.4600	N	T8 / 103.5	159.3900	N	T1 / 110.9	A	CALFIRE ELKHORN / TATHAM
13	A/G	A/G CMD	AIR COMMAND	168.3375	N		168.3375	N		A	
14	A/G	CDF T15	AIR TAC	159.2700	N	192.8	159.2700	N	192.8	A	CALFIRE A/G TAC 15
15	MEDEVAC A/G	CALCORD	MEDICAL	156.0750	N	156.7	156.0750	N	156.7	A	
16	AIRGUARD	GUARD	EMERGENCY	168.6250	N	CSQ	168.6250	N	110.9	A	
5. Special Instructions:											
6. I-205 Prepared By: Communications Unit Leader				Name: Shannon Herring COM1(T)				Signature:			

INCIDENT RADIO COMMUNICATIONS PLAN I-205				1. INCIDENT NAME		2. DATE/TIME PREPARED		3. OPERATIONAL PERIOD DATE/TIME			
August Complex South Ops				August Complex South Ops		09/06/2020 1600		09/07/2020 0700 - 09/08/2020 0700			
4. BASIC RADIO CHANNEL UTILIZATION											
Ch #	Function	Channel Name	Assignment	RX Freq	N/W	RX Tone/NAC	TX Freq	N/W	TX Tone/NAC	Mode Analog (A) Digital (D) Mixed (M)	Remarks
1	COMMAND	CMD 1		170.0000	N	T4 / 136.5	166.6750	N	T4 / 136.5	A	St. John Mtn - C4
2	COMMAND	CMD 2	DIV O / R	170.4125	N	T4 / 136.5	165.9625	N	T4 / 136.5	A	Alder Springs - C10
3	COMMAND	CMD 6	DIV T, V	170.0500	N	T4 / 136.5	167.0750	N	T4 / 136.5	A	Big Signal - C61
4	COMMAND	CMD 4		172.6750	N	T4 / 136.5	163.0375	N	T4 / 136.5	A	Anthony Peak - C38
5	COMMAND	CMD 8	UNASSIGNED	167.8375	N	T4 / 136.5	164.3875	N	T4 / 136.5	A	C62
6	TAC	NIFC T1	DIV O / R	168.0500	N	T4 / 136.5	168.0500	N	T4 / 136.5	A	
7	TAC	NIFC T3	DIV T	168.6000	N	T4 / 136.5	168.6000	N	T4 / 136.5	A	
8	TAC	NIFC T5		166.7250	N	T4 / 136.5	166.7250	N	T4 / 136.5	A	
9	TAC	NIFC T6	Road Crew	166.7750	N	T4 / 136.5	166.7750	N	T4 / 136.5	A	
10	TAC	NIFC T7	DIV V	168.2500	N	T4 / 136.5	168.2500	N	T4 / 136.5	A	
11	IA TAC	NIFC T2	IA	168.2000	N		168.2000	N		A	
12	COMMAND	CDF C7	ELHORN/ TATHAM	151.4600	N	T8 / 103.5	159.3900	N	T1 / 110.9	A	CALFIRE ELKHORN / TATHAM
13	A/G	A/G CMD	AIR COMMAND	168.3375	N		168.3375	N		A	
14	A/G	A/G TAC	AIR TAC	172.3500	N		172.3500	N		A	
15	MEDEVAC A/G	CALCOLD	MEDICAL	156.0750	N	156.7	156.0750	N	156.7	A	
16	AIRGUARD	GUARD	EMERGENCY	168.6250	N	CSQ	168.6250	N	110.9	A	
<b>5. Special Instructions:</b>											
<b>6. I-205 Prepared By: Communications Unit Leader</b>						<b>Name:</b>					<b>Signature:</b>

# MEDICAL PLAN (ICS 206 WF)

1. Incident Name			2. Operational Period					
<b>August Complex</b>			Date/Time: <b>09/07/2020</b>					
3. EMS / Ambulance Services								
Name	Location	Phone & EMS Frequency	Advanced Life Support (ALS)					
			Yes	No				
Butte Co. EMS Willows, CA	Willows, Ca	530-934-6431	X					
Butte Co. EMS Colusa, CA	Colusa, CA	530-458-0200	X					
Medic 1 Adventure Medics	Div A DP-1	Command	X					
Medic 2 American Ambulance	Div O-R DP-11	Command	X					
Medic 3 American Ambulance	Div D PASKENTA SPIKE CAMP	Command	X					
Medic 4 American Ambulance	EEL RIVER SPIKE	Command	X					
MEDIC 5 American Ambulance	Div T/V Dp/10	Command	X					
Medic 6 Star Ambulance	Div W Hopkins Fire	Command	X		Check each shift may be BLS			
4. Air Rescue / Air Ambulance Services								
Name	Phone	Type of Aircraft & Capability						
Enloe Flight Care Chico, CA1531 Esplanade Chico, CA 95926	800-344-1863	Medical Air Ship, 1 Patient Day and Night						
REACH Air Medical 1524 East St. Redding, CA 96001.	800-338-4045	Medical Air Ship, 1 Patient Day and Night						
REACH Air Medical 4615 Highland Springs Rd Lakeport, CA 95453.	707-324-2400	Medical Air Ship, 1 Patient Day and Night						
GUARD 821 Redding, CA		UH-60 HOIST, ALS, Day/Night						
H-101 CalFire Willits, CA	707-459-5336	HOIST, ALS, Day/Night						
H-205 CalFire Chico, CA		HOIST, ALS, Day/Night						
5. Hospitals (all times estimated from incident location)								
Name & Level	GPS Datum – WGS 84 Degrees Decimal Minutes		Travel Time		Phone	Helipad		Address
	Lat:	Long:	Air	Gnd		Yes	No	
Glenn Medical Center	39 44.51'	122 51.02'	15 min	50 min	530-934-1996	X		1133 West Sycamore St. Willows, CA
	VHF:	TX/RX 156.075						
	Ukiah Valley Medical Center Level 2 Trauma	Lat: 39° 9.18 Long: 123° 12.130 VHF: TX/RX 156.075						
Enloe Medical Center Level 2 Trauma	Lat: 39 44.5'	Long: 121 51.1	40 Min	2.0 Hour	530-895-9107	X		1531 Esplanade Chico, CA
	VHF:	TX/RX 156.075						

# MEDICAL PLAN (ICS 206 WF)

Mercy Medical Center Level 2 Trauma	Lat:	40 34.33'	45 Min	2.25 Hour	530-225-6000	X		2175 Rosaline Ave. Redding, CA
	Long:	122 23.26'						
	VHF:	TX/RX 156.075						
U.C. Davis Hospital Level 1 Trauma and Burn Center	Lat:	38 33.2'	45 Min	2.25 Hour	916-734-3636 Burn Unit 916-734-3790 ER	X		2315 Stockton Blvd Sacramento, CA
	Long:	121 27.7'						
	VHF:	TX/RX 156.075						

**6. Division / Crew Emergency Pre-Plan** *Update and discuss with assigned resources daily.*

<b>STONYFORD BASE CAMP</b>	<p><b>Point of Contact:</b> Frontline Medical Trailer  <b>EMS Responders &amp; Capability:</b> BLS/ALS                  MED-L Kurt Gainer (Medic) 304-704-2970; MED-L Sam Clark (EMT) 870-867-7495 @ Medical Trailer/Yurt</p> <p><b>Helispot:</b> Stonyford Cargo  <b>Lat: / Long:</b> 39° 22.32' / 122° 34.04'  <b>Elevation:</b> 1,190'</p> <p>If Emergency at ICP Willows call Glenn Co. Sherriff Dept (911). Calling 911 from Base camp connects to Colusa Co.</p>
<b>STONYFORD ICP WILLOWS, CA</b>	<p><b>Point of Contact:</b> MED-L Shanna Ellis (EMT) 318-229-6515, 318-224-0421  <b>EMS Responders &amp; Capability:</b> BLS</p>
<b>DIV C</b>	<p><b>Point of Contact:</b> Warner EMPF/ Buchan EMTF  <b>EMS Responders &amp; Capability:</b> ALS/BLS</p>
<b>DIV D</b>	<p><b>Point of Contact:</b> Clark EMPF  <b>EMS Responders &amp; Capability:</b> ALS</p>
<b>DIV A</b>	<p><b>Point of Contact:</b> Leong EMTF  <b>EMS Responders &amp; Capability:</b> BLS</p>
<b>NIGHT OPS</b>	<p><b>Point of Contact:</b> Bostian EMPF/Roberts EMTF  <b>EMS Responders &amp; Capability:</b> ALS /BLS</p>
<b>DIV R</b>	<p><b>Point of Contact:</b> Chacanaca EMPF  <b>EMS Responders &amp; Capability:</b> ALS</p>
<b>DIV O</b>	<p><b>Point of Contact:</b> Bennett EMPF  <b>EMS Responders &amp; Capability:</b> ALS</p>
<b>DIV V</b>	<p><b>Point of Contact:</b> Howard EMPF  <b>EMS Responders &amp; Capability:</b> ALS</p>
<b>DIV T</b>	<p><b>Point of Contact:</b> Moody EMPF  <b>EMS Responders &amp; Capability:</b> ALS</p>
<b>DIV W</b>	<p><b>Point of Contact:</b> Klytta EMPF  <b>EMS Responders &amp; Capability:</b> ALS</p>

<b>7. Remote Aid Stations</b>	<b>Remote Camp Location(s)</b>		
	<b>Equipment Available on Site:</b>	<b>Basic Medical Supplies</b>	
	<b>Ambulance ETA :</b>	<b>Air –</b>	<b>Ground –</b>

<b>8. Prepared By (Medical Unit Leader)</b>	<b>9. Date/Time</b>	<b>10. Reviewed By (Safety Officer)</b>	<b>11. Date/Time</b>
Sam Clark MEDL(t)	09/06/2020	Patrick Sheridan	09/06/2020

- Line Emergency Day/Night:**  
 Once any injury/illness has occurred:
- Ensure patient receives immediate First Aid and care
  - Crew Supervisor to contact Division Supervisor
  - Division Supervisor to contact August Communications via on Command Channel and relay information on Medical Incident Report
  - **DO NOT USE THE INJURED PERSON'S NAME ON THE RADIO.**
  - MEDL and Incident Safety Officer will assist with the coordination of further medical care and mode of transportation.

## MEDICAL PLAN (ICS 206 WF)

- Ambulance and/or air resources will be coordinated through MEDL and SOF1.

### Basecamp or ICP Emergency

Contact MEDL and SOF1 with patient complaint/condition and location.

- Notify Medical Unit of any injury/illness being transported to Medical Unit prior to transport.

## WILDLAND FIRE COVID-19 SCREENING TOOL

Today or in the past 24 hours, have you had any of the following symptoms<sup>1</sup>?

Symptom
Cough more than expected?
Shortness of breath or difficulty breathing?
Fever? Chills?
Muscle pain, outside your normal for firefighting?
Sore throat?
New loss of taste or smell?
Fatigue, outside your normal for firefighting?
Headache, outside your normal for firefighting?
Congestion or runny nose, outside your normal for firefighting?
Nausea or vomiting
Diarrhea
<i>* Take temperature with no-touch thermometer, if available *</i>

### Instructions for Screening

Item	What to Do
If resource has a cough that is more than expected, shortness of breath or difficulty breathing, or any other symptoms listed.	DO NOT MOBILIZE
At Entries: Consider adequate number of personnel needed for screening. Although medical personnel are ideal, screeners do not have to be medically trained. If resource has cough, shortness of breath or difficulty breathing, or any other listed symptoms including fever (over 100.4) at entry.	DO NOT ANNOUNCE Ask individual to step aside and follow the steps below.

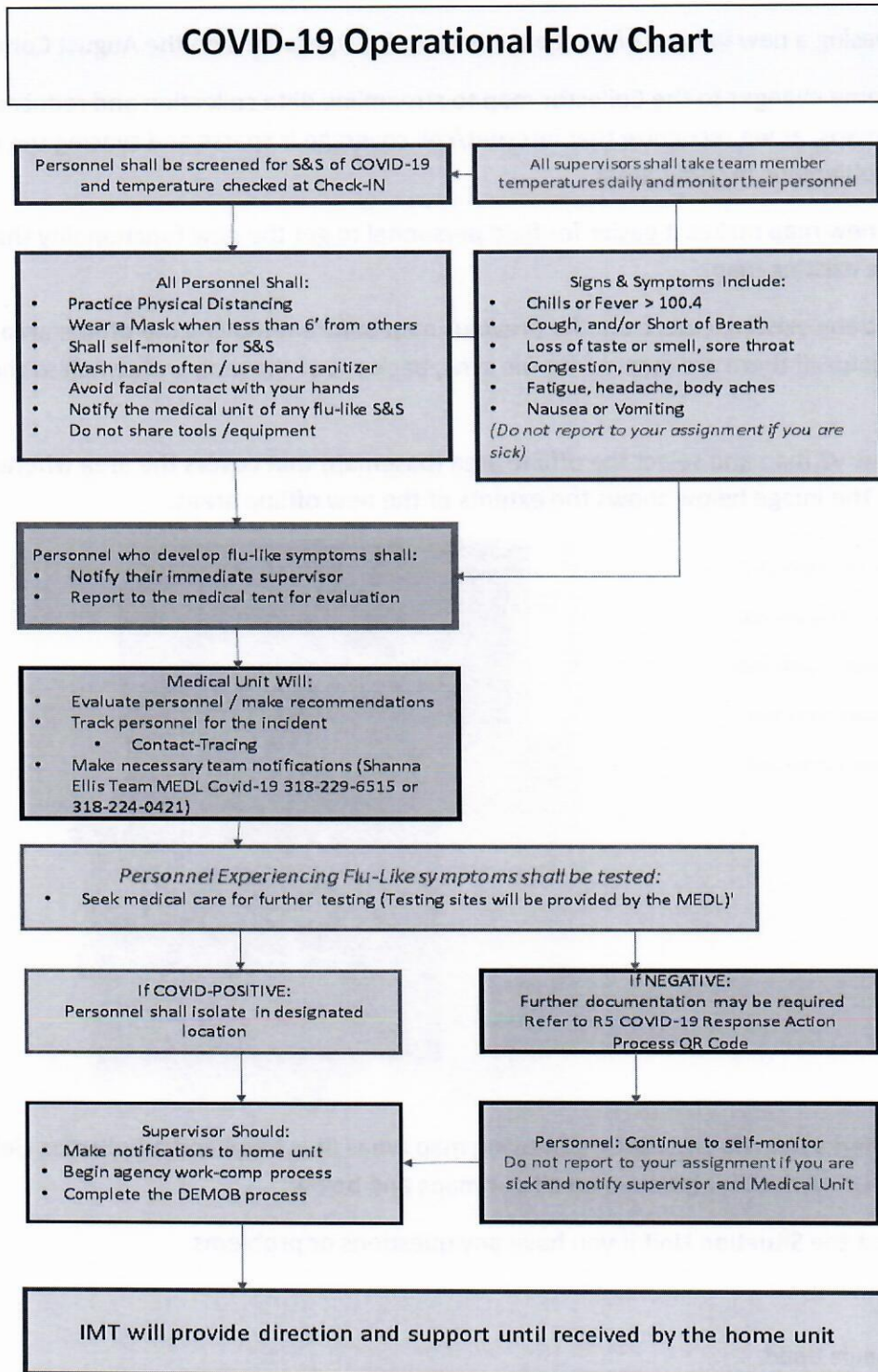
### Steps to follow

- Escort symptomatic individual to isolation area.
- Isolation support personnel should begin documentation.
- Have symptomatic individual contact Supervisor for further direction.
- Notify public health officials.
- Have individual transported as appropriate.
- Protect and secure any collected Personal Identifiable Information (PII) or Personal Health Information (PHI).

<sup>1</sup> Symptoms of Coronavirus

<https://www.cdc.gov/coronavirus/2019-ncov/symptoms-testing/symptoms.html>

# Mendocino National Forest August Complex COVID Mitigation Flow Chart



QR Code for R5 Covid Flow chart and Southern Area Blue Team Covid Mitigation Plan





## New Collector Map Released - August Complex 2020 Collector Map v2

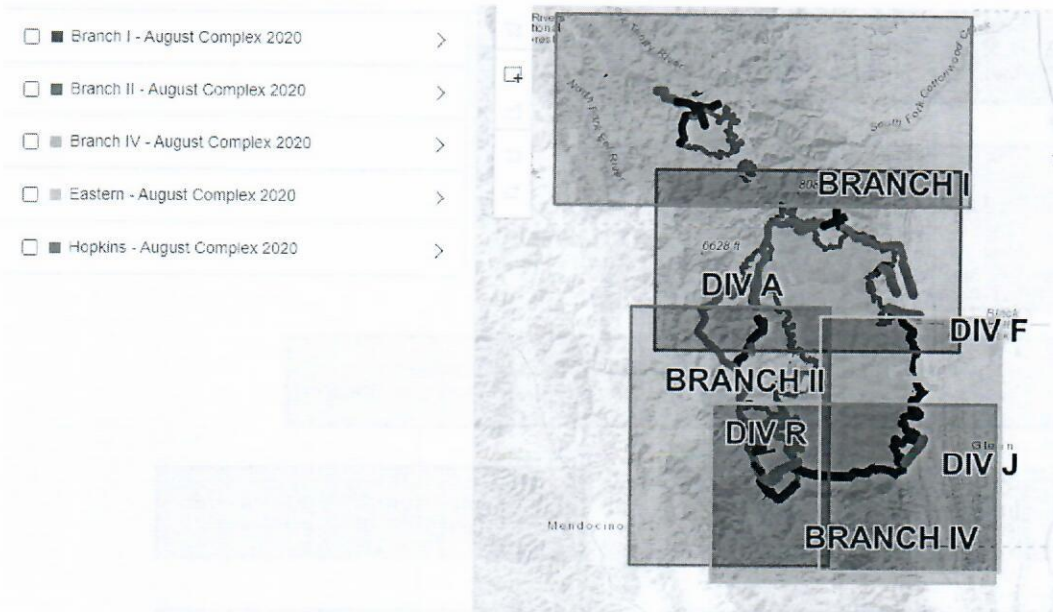
We are releasing a new version of the Collector map for Operations on the August Complex fire.

We made some changes to the Collector map to streamline data collection and reduced the size of the basemaps, as we recognize that internet/cell coverage is sparse and syncing the maps has been problematic in some areas.

Releasing a new map makes it easier for field personnel to get the new functionality than updating the existing map.

You can sync any existing edits from the previous map before removing the offline area and map in Collector. If there are errors with the sync, back out of the map and switch to the new v2 map.

Open the new v2 map and select the offline area (basemap) that covers the area where you will be working. The image below shows the extents of the new offline areas.



We have posted a help document for removing map areas (it is easy) and a Collector Field Guide to the QR folder that is linked on all our maps and below.

Please contact the Situation Unit if you have any questions or problems.



Mannin Dodd

Southern Area Blue Team - GISS



## CHECK-IN PROCEDURES

**Virtual Check-In:** Please complete online check-in with your smart phone.

Use your Resource Order and Incident Qualification Card to complete the check-in information accurately. For CREWS, only the leader must check in online. For all other resources with multiple people per resource order number, all people should complete check-in.

**1. SCAN THE QR CODE and COMPLETE the form in its entirety.**



**2. EMAIL RESOURCE ORDER AND MANIFEST TO:**



or [2020.augustcomplex.resources@firenet.gov](mailto:2020.augustcomplex.resources@firenet.gov)

If you do not have the capability or information needed to complete online check-in on your smart phone, please come to Check-In Trailer and knock on the door and someone will come outside to assist you with check-in. Thank You!

**Base Camp Check-in Trailer Hours 0600 – 2000**

**Willows ICP Check-In Hours 0700-2100**

## Resources Not Checked In or Check-In Information Incomplete

Order No.	Name	Position
E-203	MISC - FUEL TENDER, Nick Barbieri	
E-244	ENGINE - T3 - Black Range	
E-255	Tactical Water Tender 21	
E-256	ENG3 TIM Titus Enterprises	
E-405	MISC - CHIPPER, T2 - 7502	
E-436	ENG3 352 #6294	
E-476	WATER TENDER - Santaquin VFD	
E-478	TENDER, WATER - Corns	
E-487	WATER TENDER - 48 #7426	
E-509	ENG6 CAYE WILDFIRE EVCS	
O-166	EMERSON, JIM	MEDL
O-225	Romuk, Scott	FFT1
O-287	DOTO, MICHAEL L	THSP
O-406	GOULD, DEAN	AADM
O-409	RITCHEY, JACOB RYAN	FFT1
O-425	SERNA, DESTRY DAVID	HRAP
O-493	URDAHL, GARY	READ
O-506	WYEAST FORY MGMT LLC	FMOD
O-543	QUICK, ANDREW J	TFLD
O-546	MULLER, MATTHEW PAUL	HLCO
O-578	QUICK, ANDREW J	TFLD
O-609	SANDERS, JODY	SEC1
O-622	IRWIN, JESSE	REAF
O-638	SANDOVAL, ANGELA	THSP
O-646	MALLIA, DANIEL	TFLD
O-648	RADFORD, AARON	DIVS
O-70	STEWART II, ERNEST	GMEC

# FINANCE

Send all finance documentation (SIGNED CTR/shift ticket/AD forms/inspections/etc) to:

[2020.augustcomplex.finance@firenet.gov](mailto:2020.augustcomplex.finance@firenet.gov)

Finance Support Phone Number (916) 594-1722 (no texting) voice only



Finance is receiving duplicate copies of financial documents (CTRs, Shift Tickets, etc.) which has increased our processing time. We need your HELP.....when submitting financial documents via email DO NOT submit original copies to finance the digital copy is all we need. Please retain the original for your records.



**Blue Team -  
Southern Area Incident Command**

**All vehicles leaving Stonyford Base Camp MUST go through the weed wash. This a critical step in minimizing the spread of noxious weeds.**

**The weed wash is located at Stonyford base camp, in the staging area near the fueler.**

**Thanks for your cooperation.**

**Henry Hickerson  
DMOB**

## Tentative DMOB's for September 7 to September 10

DEMOB DATE	REQ #	RESOURCE NAME	KIND	TRV
09/07/2020	E-12	ENG3 CLEARWATER 62	ENG3	
09/07/2020	E-23	ENG3 SPENCE INDUSTRIAL 3492 DBA TREASURE	ENG3	
09/07/2020	E-53	VALLEY FIRE ENGINE - T3 - ROGUE VALLEY	ENG4	
09/07/2020	E-93	EN4 JD FORESTRY 04	ENG4	
09/07/2020	E-126	ENG3 CA-SRF 321	ENG3	AOV
09/07/2020	E-179	ENG3 TREASURE VALLEY	ENG3	POV
09/07/2020	E-258	ENGINE - T6 - ROCKY POINT	ENG6	POV
09/07/2020	O-69	THOMAS, LOWELL	READ	
09/07/2020	O-133	MAKOWSKI, PAIGE	READ	AOV
09/07/2020	O-143	DEANE, PETER S	SECM	POV
09/07/2020	O-145	VINCENT, JESSICA	DIVS	AR
09/07/2020	O-177	STEWART, LEO E	BCMG	AOV
09/07/2020	O-220	OVERTON, LINDA GOLDMAN	HRSP	POV
09/07/2020	O-235	FMOD PACIFIC RIDGELINE	FMOD	POV
09/07/2020	O-322	FORESTRY LLC - PRF- GASTON, ANDREW	LOFR	AR
09/07/2020	O-351	ZAMORA, BILLY M	FSC1	AOV
09/07/2020	O-494	NOURMOHAMA, MATTHEW	READ	AOV
09/07/2020	O-556	WALLACE, HENRY	DRIV	AOV
09/07/2020	O-561	WESTMAN, MARK	HECM	AR
09/08/2020	C-8	HC2 FRANCO C-1	HC2	
09/08/2020	C-31	HC2 TORRES INC	HC2	POV
09/08/2020	C-60	HC1 ELK MT	HC1	
09/08/2020	E-27	WTS3 PRECISION TOWING	WTS3	
09/08/2020	E-33	ENG3 J3 CONST 09	ENG3	POV
09/08/2020	E-108	WTS2 WATER WORKS	WTS2	POV
09/08/2020	E-113	WT2 WEBER FIRE 266	WTS2	
09/08/2020	E-175.1	LOVATO, JACOB	DZOP	POV
09/08/2020	E-245	MISC - SERVICE TRUCK W/	MEC	POV
09/08/2020	E-375	MECHANIC, T2 ENGINE - T6 -	ENG6	POV
09/08/2020	O-67	MCNEIL, BRENDON	TFLD	AIR
09/08/2020	O-158	OELSCHLAGER, CHRISTINE	DOCL	AR
09/08/2020	O-219	FLOYD JR, TROY E	SOF2	AR
09/08/2020	O-452	JAYNES, WILLIAM BURGESS	SEC1	AR
09/08/2020	O-466	FALKEY, JENNIFER	SCKN	OTH
09/08/2020	O-492	PETRUZALEK, JERRY R	GISS	AR
09/08/2020	O-497	WEAVER, ROBERT	ARCH	AOV

DEMOB DATE	REQ #	RESOURCE NAME	KIND	TRV
09/09/2020	C-93	HC2 OC 22	HC2	REN
09/09/2020	E-110	WTS2 JOHNSON 474K	WTS2	POV
09/09/2020	E-111	TENDER, WATER SUPPORT	WTS2	POV
09/09/2020	E-114	TENDER, WATER	WTS2	AOV
09/09/2020	E-115	WTS2 OUTDOOR VAC	WTS2	OTH
09/09/2020	E-172	DOZ2 MONATSU 17	DOZ2	POV
09/09/2020	E-173	DOZ2 TOUGH COMPANY 02	DOZ2	POV
09/09/2020	E-185	ENG6 WINDSWEPT FIRE 604	ENG6	AOV
09/09/2020	E-187	ENG3 OUTBACK FIREFIGHTING	ENG3	POV
09/09/2020	E-193	ENG3 SPARKS BRUSH 51	ENG3	POV
09/09/2020	E-195	ENG6 DB JET	ENG6	POV
09/09/2020	E-200	ENG4 CASTLE MOUNTAIN	ENG4	POV
09/09/2020	E-232	POT2 JOHNSON STAINLESS	POT2	POV
09/09/2020	E-262	WTS1	WTS1	POV
09/09/2020	E-264	WTS2 TOBIASSON WATER	WTS2	POV
09/09/2020	E-265	WTS2 CATTLELACK RANCH	WTS2	AOV
09/09/2020	O-16	FOUTS, WILLIAM	LSC3	POV
09/09/2020	O-186	HAYS, RUSSELL DAVID	LOFR	REN
09/09/2020	O-275	MALCOLM, MICHAEL KEITH	DIVS	AR
09/09/2020	O-286.10	DOIG, VICTOR	DIVS	AR
09/09/2020	O-286.18	ROBLES, JOSEPH A	RESL	AR
09/09/2020	O-286.33	GAINER, KURT	MEDL	AR
09/09/2020	O-602	MEREDITH, JAMES M	FSC1	AR
09/10/2020	C-58	HC2 FRANCO C-8	HC2	
09/10/2020	E-14	ENG6 ROCKY POINT 117	ENG6	POV
09/10/2020	E-17	DOZ2 HUMPHREY	DOZ2	POV
09/10/2020	E-24	ENG3 WILDFIRE SUPPORT	ENG3	POV
09/10/2020	E-112	WTS2 DBA DUSTBUSTERS	WTS2	
09/10/2020	E-135	DOZ2 DODGE DOZER	DOZ2	
09/10/2020	E-174	DOZ2 KIT CONTRACTING	DOZ2	POV
09/10/2020	E-235	PU PAMELA GOULD	PU	POV
09/10/2020	E-236	PU1 RICHARD LANDRUMS	PU	
09/10/2020	E-270	DOZ2 CM DOZ	DOZ2	
09/10/2020	E-373	MASTICATOR - BOOM MOUNTED ALLEN'S	MAST	POV
09/10/2020	O-28	ROBERTS, BETTY JEAN	SPUL	REN
09/10/2020	O-63	ROWE, KYLE	PSCT	AOV
09/10/2020	O-65	CAMBEROS, CARLOS	PSCT	AOV
09/10/2020	O-79	HAWKINS, TOMMY	SOF2	AIR
09/10/2020	O-125	VILLA, CESAR	DRIV	AOV
09/10/2020	O-136	STARR, RONNA L	PTRC	POV
09/10/2020	O-286.8	REYNOLDS, PAUL DWAYNE	OSC1	AR
09/10/2020	O-286.22	DODD, HOWARD M	GISS	OTH
09/10/2020	O-286.23	HOLDEN, GEOFFREY	GISS	AR
09/10/2020	O-318	BUCHAN, JOHN R	EMTF	
09/10/2020	O-319	CLEMONS, JOSH W	SECM	AOV

DEMOB DATE	REQ #	RESOURCE NAME	KIND	TRV
09/10/2020	O-321	WARNER, BRYAN JAMES	EMPF	AIR
09/10/2020	O-324	MOODY, JOHN ROSS	EMPF	
09/10/2020	O-325	CHACANACA, MATTHEW WAYNE	EMPF	
09/10/2020	O-327	FERRUZZI, ASHTON PUMA	UASP	
09/10/2020	O-328	STEBER, SHAWN	UASP	AOV
09/10/2020	O-329	KLYTTA, KEVIN	EMPF	REN
09/10/2020	O-331	SNOW, DWIGHT	OSC1	AR
09/10/2020	O-332	LEDBETTER, THOMAS	OSC1	AR
09/10/2020	O-333	REAGAN, DONNA S	ORDM	AR
09/10/2020	O-335	DIMAGGIO, ANTHONY	DIVS	AR
09/10/2020	O-348	BEASLEY, MICHAEL	THSP	POV
09/10/2020	O-349	GUARNACCIA, PAUL	DRIV	AOV
09/10/2020	O-380	WYMAN, KELLEY PAUL	HEQB	
09/10/2020	O-405	KENAH, ANA MARIE	DRIV	
09/10/2020	O-473	MOWERY, MICHAEL	AOBD	AR
09/10/2020	O-615	RUTH, ANDREW D	FOBS	AR
09/10/2020	O-721	PADILLA, MATTHEW JOHN	READ	AOV

Are you on the DMOB list? Are you supposed to be? If so, there are several things you need to do before leaving the incident:

- 1) Return all equipment to supply and communications.
- 2) Does your vehicle need inspection from Ground Support? If so, get it done!
- 3) All vehicles leaving Stonyford Base Camp must go through the weed wash.
- 4) Then proceed to the ICP in Willows to meet with finance.
- 5) When done with finance, call DMOB @ 540-798-2218 and answer 5 short questions about your travel. Then be on your way!

QUESTIONS? Call 540-798-2218

Did you request an extension and your DMOB date has not changed! Talk with resources.





# August Complex



## Thank You Notes

Please provide the contact information for those people, groups or enterprises you wish to recognize for their efforts or contributions to the management of this incident.

### Public Information:

(530) 487-4602

2020.augustcomplex@firenet.gov

**Mendocino National Forest:** [www.fs.usda.gov/mendocino](http://www.fs.usda.gov/mendocino)

**Facebook:** [www.facebook.com/MendocinoNF](http://www.facebook.com/MendocinoNF)

**Inciweb:** [inciweb.nwcg.gov/incident/6983/](http://inciweb.nwcg.gov/incident/6983/)

**Feel free to contact us with any questions that you have.**

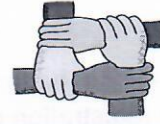
**Scan the QR Code to be taken  
to a fillable Google Form**

<https://forms.gle/jZY5VNxfTPT4x9fb9>

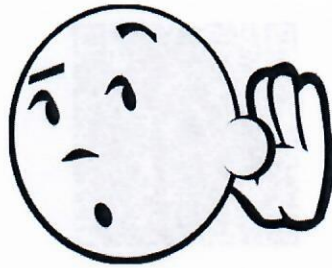




## Human Resource Message



### Listen More



A wise man once told me that we have two ears and one mouth for a reason – to listen twice as much as we speak. If you notice, our ears always stay open, while our mouths have a hinge so they can be closed.

Also, note that “listen” and “silent” are spelled with the same letters. Is that just a coincidence, or is it that you need to be silent in order to be able to really listen? Check that out and think about it!

Let’s try really listening to each other more and see if we can resolve our issues and/or concerns that we may have much faster.

#### **Take Home Message:**

**Good listening allows us to demonstrate that we are paying attention to the thoughts, feelings and behaviors of the other person (seeing the world through their eyes). This is crucial to maintaining productive relationships, and sometimes the only way to establish communication.**

The Human Resources Specialist is here on assignment to help you and your teams manage the operational stress keeping your crews safe, positive, and productive increasing your situational awareness.

Human Resources Specialist August Complex Fire – Tony Torres  
505.249.2341 (call/text) or email @ [anthony.Torres@usda.gov](mailto:anthony.Torres@usda.gov)

## TRAINING MESSAGE

Check-in – If you have a position task book (PTB), please check in by scanning the QR code below to initiate the registration process. Please complete the form in its entirety. To complete the registration process, at your earliest convenience, please email a copy of your qualification card and position task book cover to Debra Burgos, TNSP at [debra.burgos@usda.gov](mailto:debra.burgos@usda.gov) (if you have questions, please call 404-987-3256).

For your convenience, an electronic ICS-226 and Evaluation Record will be sent to you after you complete the registration process.



### AUGUST COMPLEX TRAINEE REGISTRATION

Demob – In order to receive credit for your assignment, you must 'close out' with the Training Specialist prior to departure.

Close out requirements include:

1. Ensure your trainer(s)/evaluator(s) has/have initialed completed tasks in your PTB;
2. Obtain an Incident Performance Evaluation;
3. Obtain an Evaluation Record;
4. If evaluator initialed #1 on your Evaluation Record, ensure he/she signs as final evaluator (located on the backside of your PTB cover page);
5. Email all documentation (including item #3, when appropriate) to [debra.burgos@usda.gov](mailto:debra.burgos@usda.gov) (please do not text);
6. Complete Exit Interview – Scan QR Code below.



### AUGUST COMPLEX TRAINEE EXIT INTERVIEW

## A Message from the Documentation Unit

If you need to submit Documentation but do not have access to Microsoft Teams, you can send it to the following e-mail address:

**2020.augustcomplex.docl@firenet.gov**

This is an easy way to get your documents in, and can be either an electronic form or a scanned/clearly photographed handwritten form.

The more you can send my way now, the less difficult it will be for whomever takes over next week. Please take a little bit of time to get your forms and paperwork in, especially things you don't really need to hold onto anymore.

Thanks very much for your cooperation,

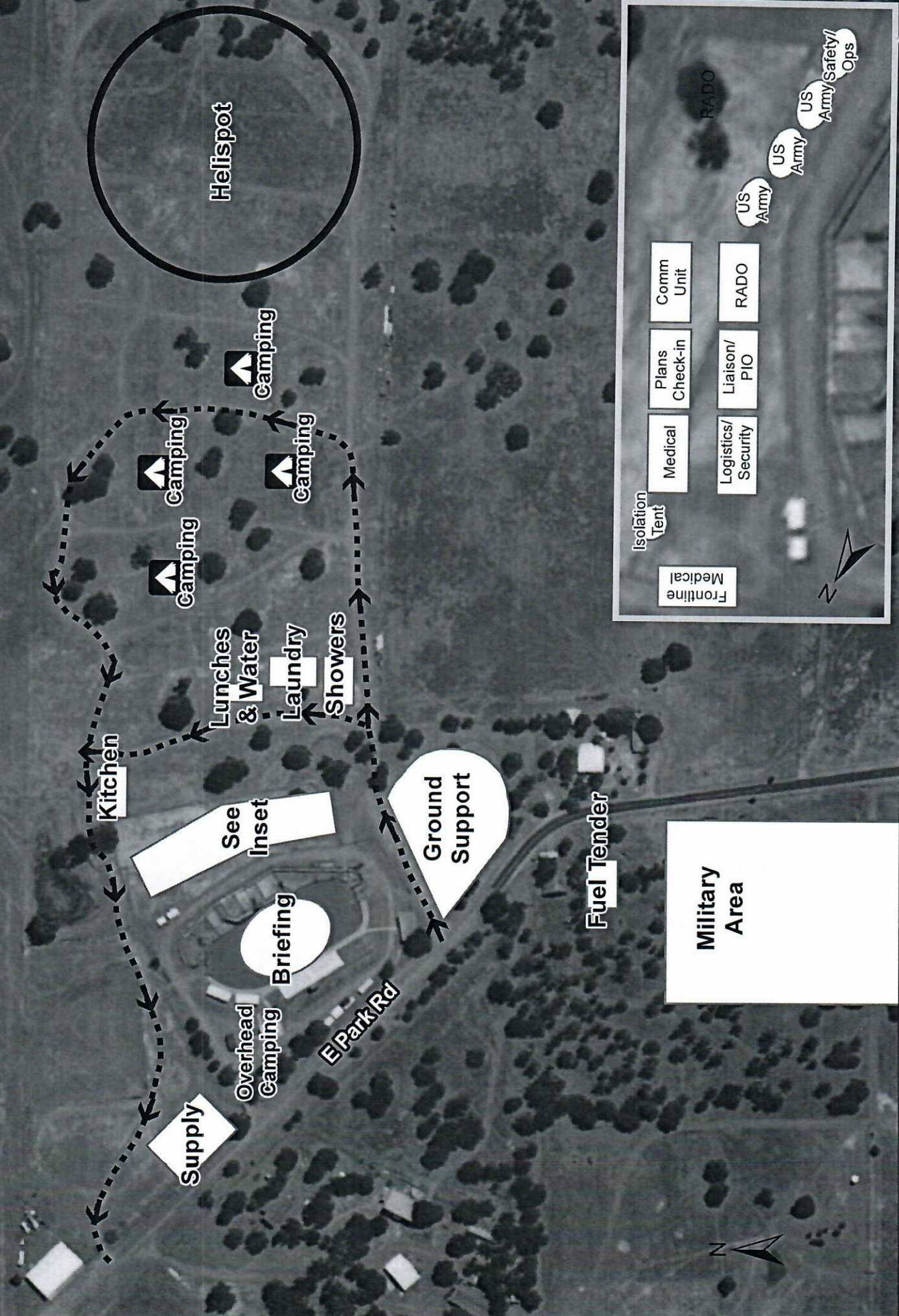
Chris Oelschlager, DOCL

(270) 871-7302

chris\_oelschlager@firenet.gov



# Stonyford Base Camp



**August Complex Contact List**

**August Communications 24 Hour 925-817-9846**

Position	Name	Number	Position	Name	Number
<b>COMMAND and GENERAL STAFF</b>			<b>OPERATIONS</b>		
Incident Commander	Mark Morales	479-264-7991	South Ops Sxn Chief; S Ops Sxn T	Paul Reynolds; Derrick Moore	662-418-9743; 252-229-0163
Incident Commander (T)	Andy Baker	706-400-2150	North Ops Sxn Chief; N Ops Sxn T	Dwight Snow; Chris Lundgren	352-516-4969; xxx-xxx-xxxx
Safety Officer	Brian Beisel	270-978-1610	Ops Branch I Dir.	Mike Brunson	706-266-4244
Safety Officer	Pat Sheridan	540-490-1764	Ops Branch II Dir.	Michael Womack	434-547-2670
Information Officer	Michael Williams	470-599-3926	Ops Branch II Dir. (T)	Kerry Clark	205-272-2424
Liaison Officer	Jeff Owenby	828-388-0401	Ops Branch IV	James Sullivan	305-546-9358
Liaison Officer	Andy Gaston	706-508-2363	Ops Branch V	Michael Heard	334-343-1624
<b>PLANS</b>			Strategic Ops	Thomas Ledbetter	561-413-8547
Plans Section Chief	Tom Lowry	918-429-4258	Planning Ops	Jon Wallace	208-830-1853
Plans Section Chief (T)	Greg Sanders	540-529-3376	Division A	Robert Wood	912-346-0978
Plans Section Chief (T)	Jeff Adams	512-234-0220	Division A (T)	Patrick Krage	715-891-2358
Resources Unit	Joe Robles	803-727-8923	Division C	Kendall Carpenter	918-721-2502
Status Check-in	Allison Cochran	256-566-5509	Division C (T)	Robert Hoyle	707-621-2300
Situation Unit	Scott Hamlet	918-448-3111	Division D	Jason Packard	352-232-6350
FBAN	Mike Housh	912-281-1575	Division T	Rocky Beery	864-200-5498
SOPL	Ben Rowland	870-490-0128	Division V	Vic Doig	352-493-3155
Demob Unit	Henry Hickerson	540-798-2218	Division V (T)	Colten Moor	276-706-7729
GISS	Mannin Dodd	540-239-1640	Division J/N	Richard Sinkovitz	912-464-9453
GISS	Geoff Holden	505-850-3308	Division O	Shannon Banks	530-934-7758
ITSS	Dan Leduc	318-613-0362	Division O (T)	R. Reyes	xxx-xxx-xxxx
DOCL	Chris Oelschlager	270-871-2302	Division R	Richard Sinkovitz	912-464-9453
Training Specialist	Debra Burgos	404-987-3256	Division W	Mike Malcolm	910-770-0810
Human Resources Sp.	Tony Torres	505-249-2341	Air Ops Branch Dir	Michael Mowery	870-214-0034
Incident Meteorologist	Rick Davis	941-524-2957	Air Support Grp Sprvsr	Michael O'Leary	239-336-9789
<b>LOGISTICS</b>			Air Support	Bob Yeager	318-613-3683
Logistics Section Chief	Chris Alford	571-334-8549	CalFire Asst Chief Ops	Jeff Gahagan	707-391-6703
Logistics Section Chief	Cynthia Schiffer	540-315-5241	<b>FINANCE</b>		
Medical Unit Leader	Shanna Ellis	318-229-6515	Finance Sxn Chief	Billy Zamora	505-362-7001
Supply Unit	Sandy Rhodes	501-282-0085	Finance Deputy	James Meredith	916-594-1722
Ordering	Natalie Broce	540-798-7313	Procurement	Sherry Helmick	916-594-1866
Ground Support	Randy Chapin	601-405-5711	TIME T	Jessica Blackwell	205-275-2585
Facilities	Lewis Brostrom	763-226-8078	COMP	Donna Rogers	803-295-3033
Security Manager	Christopher Cooley	912-660-9397			
Security Mgr (T)	Joshua Clemson	423-300-4701			
Comms Unit	Mark Spann	936-208-0488			







**Medical Incident Report**

**FOR A NON-EMERGENCY INCIDENT, WORK THROUGH CHAIN OF COMMAND TO REPORT AND TRANSPORT INJURED PERSONNEL AS NECESSARY.**  
**FOR A MEDICAL EMERGENCY: IDENTIFY ON SCENE INCIDENT COMMANDER BY NAME AND POSITION AND ANNOUNCE "MEDICAL EMERGENCY" TO INITIATE RESPONSE FROM IMT COMMUNICATIONS/DISPATCH.**

**Use the following items to communicate situation to communications/dispatch.**

- 1. CONTACT COMMUNICATIONS / DISPATCH** (Verify correct frequency prior to starting report)  
*Ex: "Communications, Div. Alpha. Stand-by for Emergency Traffic."*
- 2. INCIDENT STATUS:** Provide incident summary (including number of patients) and command structure.  
*Ex: "Communications, I have a Red priority patient, unconscious, struck by a falling tree. Requesting air ambulance to Forest Road 1 at (Lat./Long.) This will be the Trout Meadow Medical, IC is TFLD Jones. EMT Smith is providing medical care."*

Severity of Emergency / Transport Priority	<input type="checkbox"/> <b>RED / PRIORITY 1</b> Life or limb threatening injury or illness. Evacuation need is IMMEDIATE <i>Ex: Unconscious, difficulty breathing, bleeding severely, 2° – 3° burns more than 4 palm sizes, heat stroke, disoriented.</i> <input type="checkbox"/> <b>YELLOW / PRIORITY 2</b> Serious Injury or illness. Evacuation may be DELAYED if necessary. <i>Ex: Significant trauma, unable to walk, 2° – 3° burns not more than 1-3 palm sizes.</i> <input type="checkbox"/> <b>GREEN / PRIORITY 3</b> Minor Injury or illness. Non-Emergency transport <i>Ex: Sprains, strains, minor heat-related illness.</i>	
Nature of Injury or Illness & Mechanism of Injury		Brief Summary of Injury or Illness <i>(Ex: Unconscious, Struck by Falling Tree)</i>
Transport Request		Air Ambulance / Short Haul/Hoist Ground Ambulance / Other
Patient Location		Descriptive Location & Lat. / Long. <i>(WGS84)</i>
Incident Name		Geographic Name + "Medical" <i>(Ex: Trout Meadow Medical)</i>
On-Scene Incident Commander		Name of on-scene IC of Incident within an Incident <i>(Ex: TFLD Jones)</i>
Patient Care		Name of Care Provider <i>(Ex: EMT Smith)</i>

**3. INITIAL PATIENT ASSESSMENT:** Complete this section for each patient as applicable (start with the most severe patient)

Patient Assessment: See IRPG PAGE 106

Treatment:

**4. TRANSPORT PLAN:**

Evacuation Location (if different): (Descriptive Location (drop point, intersection, etc.) or Lat. / Long.) Patient's ETA to Evacuation Location:

Helispot / Extraction Site Size and Hazards:

**5. ADDITIONAL RESOURCES / EQUIPMENT NEEDS:**

*Example: Paramedic/EMT, Crews, Immobilization Devices, AED, Oxygen, Trauma Bag, IV/Fluid(s), Splints, Rope rescue, Wheeled litter, HAZMAT, Extrication*

**6. COMMUNICATIONS: Identify State Air/Ground EMS Frequencies and Hospital Contacts as applicable**

Function	Channel Name/Number	Receive (RX)	Tone/NAC *	Transmit (TX)	Tone/NAC *
COMMAND					
AIR-TO-GRND					
TACTICAL					

**7. CONTINGENCY: Considerations:** If primary options fail, what actions can be implemented in conjunction with primary evacuation method? Be thinking ahead.

**8. ADDITIONAL INFORMATION:** Updates/Changes, etc.

**REMEMBER:** Confirm ETA's of resources ordered. Act according to your level of training. Be Alert. Keep Calm. Think Clearly. Act Decisively.