



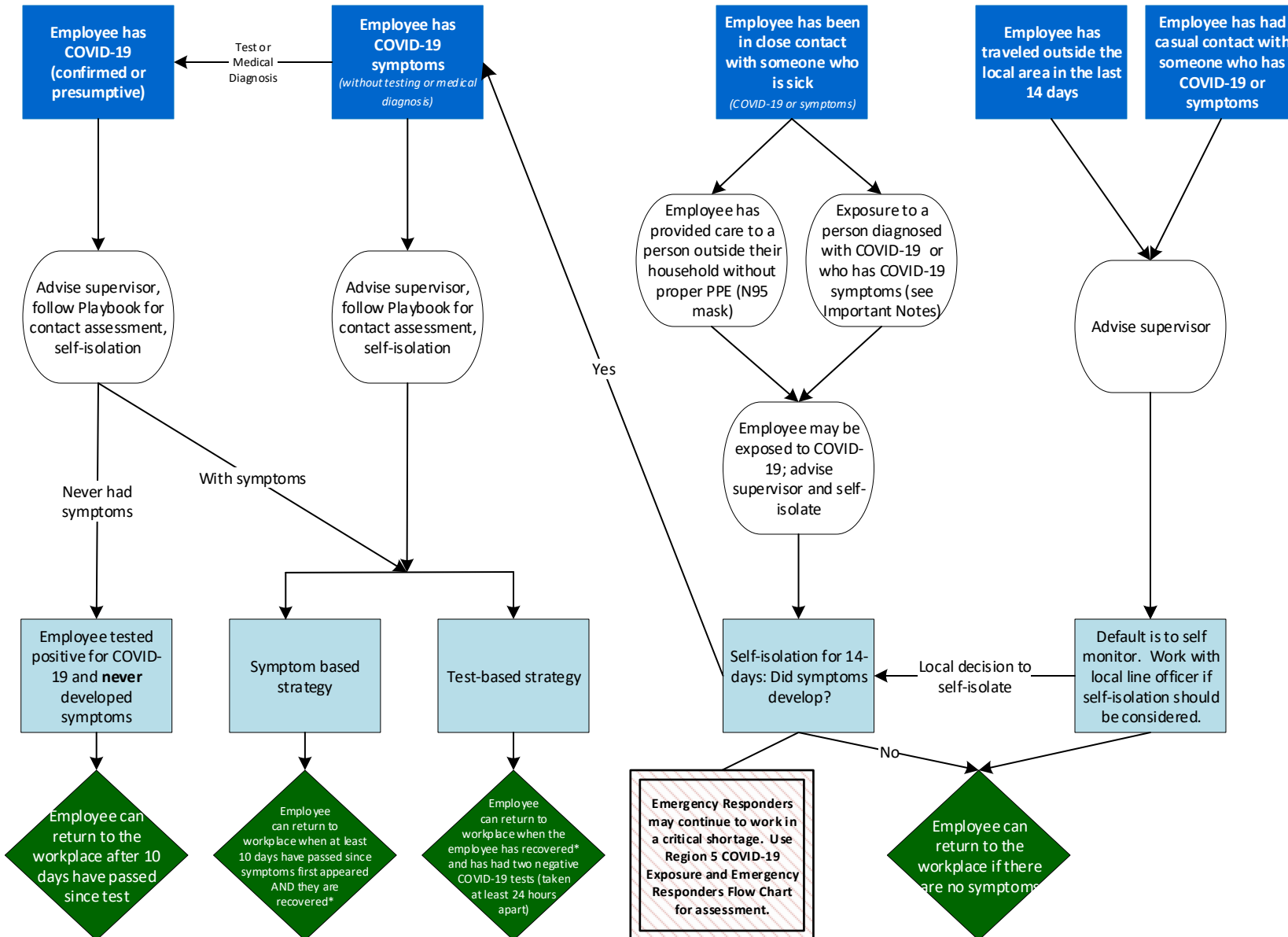
Region 5 Pacific Southwest Region COVID-19 Response Action Process

August 20, 2020

COVID-19 Response and Employee Notification

Employee is sick (symptoms or positive test)

Employee has had potential exposure



Important Notes:

* Recovered is defined as 10 days since symptoms first appeared AND 24 hours with no fever without the use of fever-reducing medicines AND other symptoms of COVID-19 are improving.

- Symptoms of COVID-19 include cough, shortness of breath, trouble breathing, fever, chills, repeated shaking with chills, muscle or body aches, headache, sore throat, new loss of taste or smell, congestion or runny nose, nausea or vomiting, or diarrhea.

- Contact Assessment should be conducted to help determine potential exposure of additional employees; conduct assessment for the 2-day period before illness onset or test date of sick employees, whichever came first.

- Close contact is defined as less than 6 feet, for at least 15 minutes with or without face coverings/masks. Casual contact is defined as less than 6 feet for less than 15 minutes or more than 6 feet for more than 15 minutes.

- Any employee in "close contact with someone who is sick" may return to the workplace if the sick person is tested for COVID-19 and the test is negative.

- Contact with exposed individuals is classified as secondary contact and does not typically require self-isolation unless the exposed individual tests positive.

- You do not need to self-isolate unless you meet one of the criteria identified.

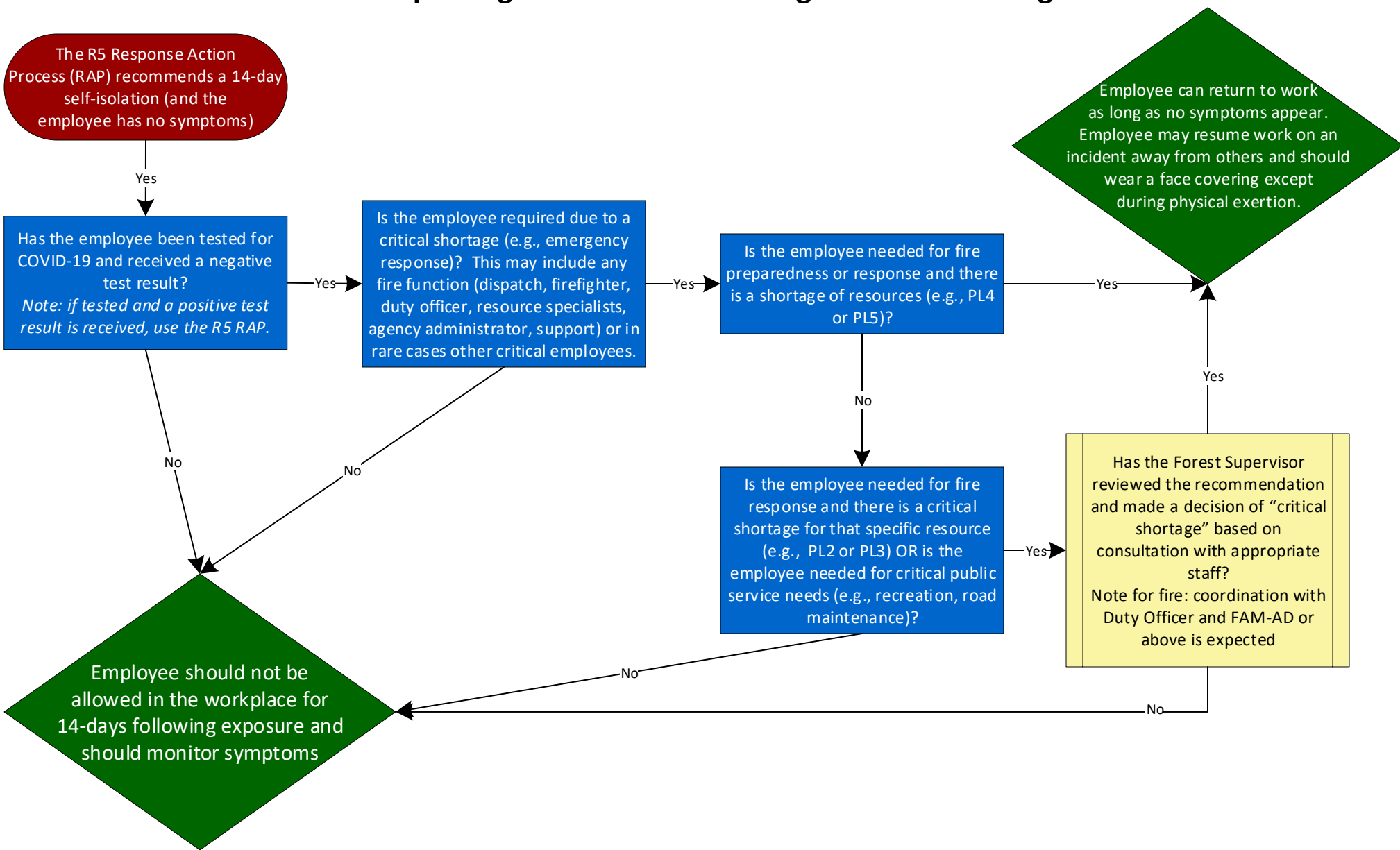
- Always follow the advice of a medical provider, if given, including any need for isolation or clearance for return-to-duty.

This document is subject to change based on CDC guidance.

Region 5: COVID-19 Exposure and Emergency Responders

Interpreting CDC Guidance during a Critical Shortage

August 20, 2020



This chart is NOT appropriate for anyone who has tested positive for COVID-19 or who is displaying symptoms (fever, body aches, unexplained cough, etc.) and is not recommended for any employee who has been exposed to a cluster (>2) of cases. This chart is intended as a framework, not direction. Local discretion may be needed due to availability of testing and specific circumstances of each case.

** COVID-19 testing may be useful for detecting asymptomatic cases and prevalence in the population.*