

**OPS Branch Breakout Map**  
**Branch 21**

0 0.75 1.5 3 Miles

# OPS Branch Breakout Map

## Imagery

### Branch 21

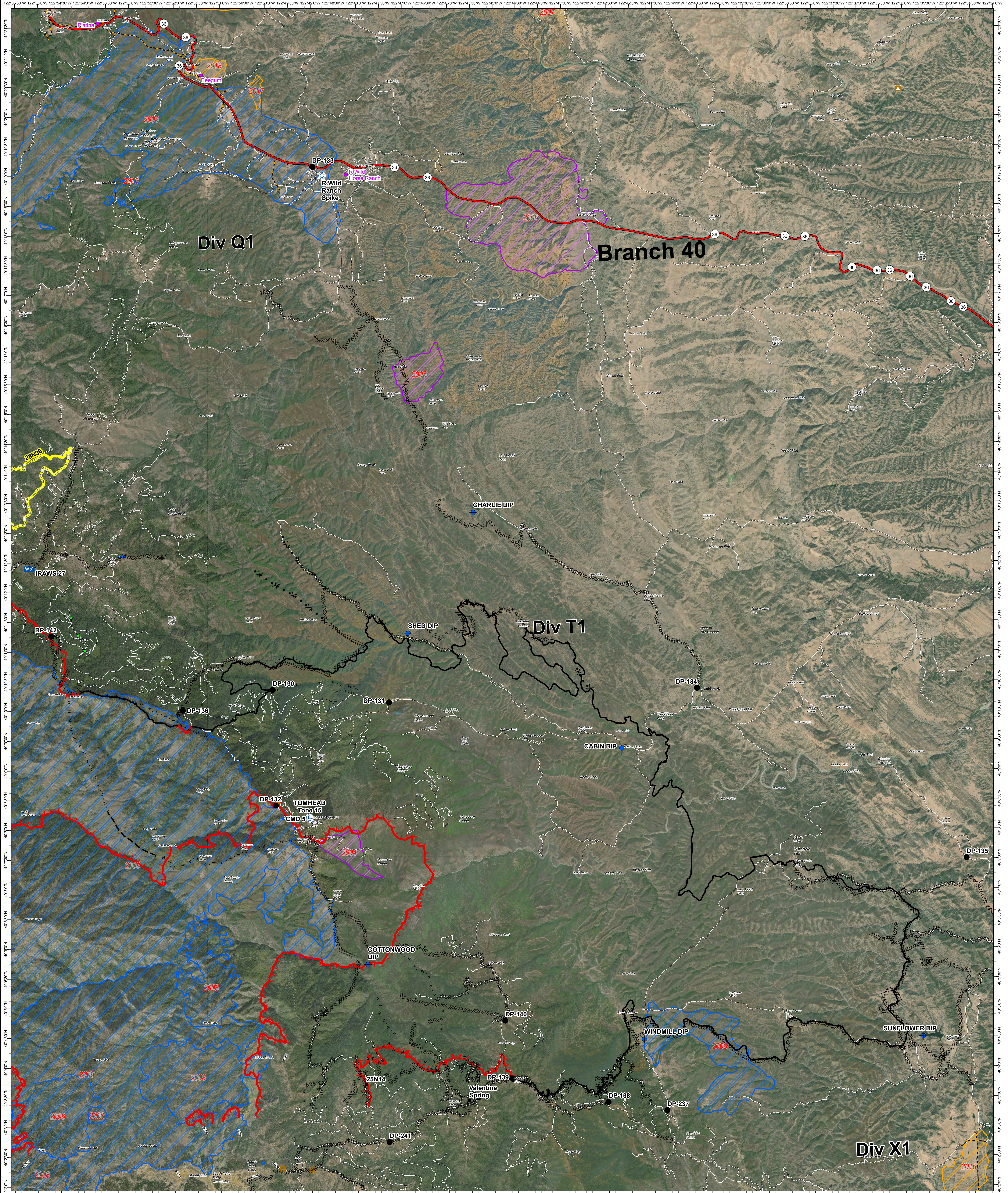
August Complex North Zone  
CA-MNF-000753  
September 21, 2020

- Camp
- Dip Site
- Drop Point
- Mobile Weather Unit
- Repeater
- Dozer Avoidance Points
- Community
- Campground
- Structure
- Uncontrolled Fire Edge
- Contained Line
- Completed Dozer Line
- Completed Hand Line
- Road as Completed Line
- Proposed Dozer Line
- Fence
- Highlighted Travel Routes
- State Highways
- PGE Transmission Line
- PGE Distribution Line
- Place Name
- Local connector
- Local or 4WD road
- FireHistory
- 2001 - 2005
- 2006 - 2010
- 2011 - 2015
- 2016 - 2018
- Sierra Pacific Industries Values At Risk
- Sierra Pacific Industries Values At Risk
- World Imagery
- Low Resolution 15m Imagery
- High Resolution 60cm Imagery

- High Resolution 30cm Imagery
- Citations
- 1.9cm Resolution Metadata
  - 3.7cm Resolution Metadata
  - 7.5cm Resolution Metadata
  - 15cm Resolution Metadata
  - 30cm Resolution Metadata
  - 60cm Resolution Metadata
  - 1.2m Resolution Metadata
  - 2.4m Resolution Metadata
  - 4.8m Resolution Metadata
  - 9.6m Resolution Metadata
  - 19m Resolution Metadata
  - 38m Resolution Metadata
  - 75m Resolution Metadata
  - 150m Resolution Metadata
- Datum: NAD83

**OPS Branch Breakout Map**  
**Branch 21**





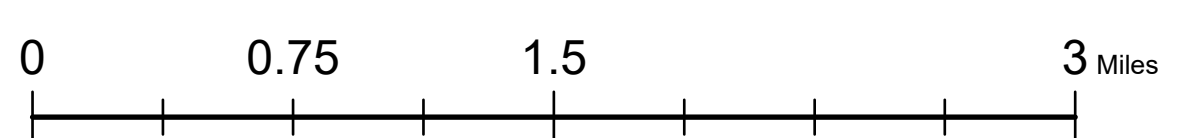
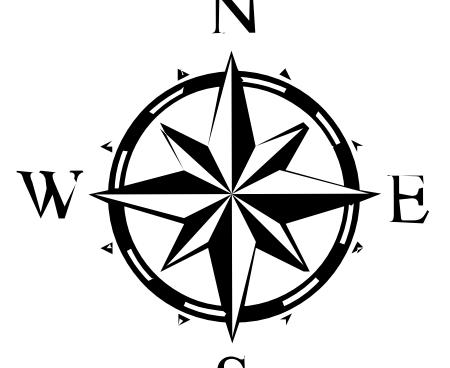
# OPS Branch Breakout Map

## Imagery

### Branch 40

**August Complex North Zone**  
**CA-MNF-000753**  
**September 21, 2020**

**OPS Branch Breakout Map**  
**Branch 40**



- |   |  |   |
|---|--|---|
| <ul style="list-style-type: none"> <li> Camp</li> <li> Dip Site</li> <li> Drop Point</li> <li> Mobile Weather Unit</li> <li> Repeater</li> <li> Value at Risk</li> <li> Community</li> <li> Campground</li> <li> Structure</li> <li> Uncontrolled Fire Edge</li> <li> Contained Line</li> <li> Completed Dozer Line</li> <li> Completed Hand Line</li> <li> Road as Completed Line</li> <li> Proposed Dozer Line</li> <li> Planned Fire Line</li> </ul> | <ul style="list-style-type: none"> <li> Highlighted Travel Routes</li> <li> State Highways</li> <li> PGE Transmission Line</li> <li> PGE Distribution Line</li> <li> Place Name</li> <li> Local or 4WD road</li> <li> Trail</li> <li> FireHistory</li> <li> 2001 - 2005</li> <li> 2006 - 2010</li> <li> 2011 - 2015</li> <li> 2016 - 2018</li> <li> Sierra Pacific Industries Values At Risk</li> <li> Sierra Pacific Industries Values At Risk</li> <li> World Imagery</li> <li> Low Resolution 15m Imagery</li> <li> High Resolution 60cm Imagery</li> </ul> | <ul style="list-style-type: none"> <li>High Resolution 30cm Imagery</li> <li>Citations</li> <li>1.9cm Resolution Metadata</li> <li>3.7cm Resolution Metadata</li> <li>7.5cm Resolution Metadata</li> <li>15cm Resolution Metadata</li> <li>30cm Resolution Metadata</li> <li>60cm Resolution Metadata</li> <li>1.2m Resolution Metadata</li> <li>2.4m Resolution Metadata</li> <li>4.8m Resolution Metadata</li> <li>9.6m Resolution Metadata</li> <li>19m Resolution Metadata</li> <li>38m Resolution Metadata</li> <li>75m Resolution Metadata</li> <li>150m Resolution Metadata</li> </ul> |
|---|--|---|

**OPS Branch Breakout Map**  
**Branch 40**

Datum: NAD83