

MENDOCINO NATIONAL FOREST  
FOREST ORDER NO. 08-20-13  
AUGUST COMPLEX FIRE CLOSURE

Pursuant to 16 U.S.C. 551 and 36 C.F.R. 261.50(a) and (b), and to provide for public safety, the following acts are prohibited within the Mendocino National Forest. This Order is effective from September 19, 2020 through November 30, 2020.

1. Going into or being upon the August Fire Complex Closure Area, as shown on Exhibit A and described in Exhibit B. 36 C.F.R. 261.52(e).
2. Being on any National Forest System roads within the August Complex Fire Closure Area, as shown on Exhibit A and listed in Exhibit C. 36 C.F.R. 261.54(e).
3. Being on any National Forest System trail within the August Complex Fire Closure Area, as shown on Exhibit A and listed in Exhibit C. 36 C.F.R. 261.55(a).

Pursuant to 36 C.F.R. 261.50(e), the following persons are exempt from this Order:

1. Persons with Forest Service Contract or permit from the Forest Service specifically authorizing the otherwise prohibited act or omission.
2. Any Federal, State, or local officer or member of an organized rescue or fire fighting force in the performance of an official duty.

These prohibitions are in addition to the general prohibitions contained in 36 C.F.R. Part 261. Subpart A.

A violation of these prohibitions is punishable by a fine of not more than \$5,000.00 for an individual or \$10,000.00 for an organization, or imprisonment for not more than six months, or both. 16 U.S.C. 551 and 18 U.S.C. 3559, 3571 and 3581.

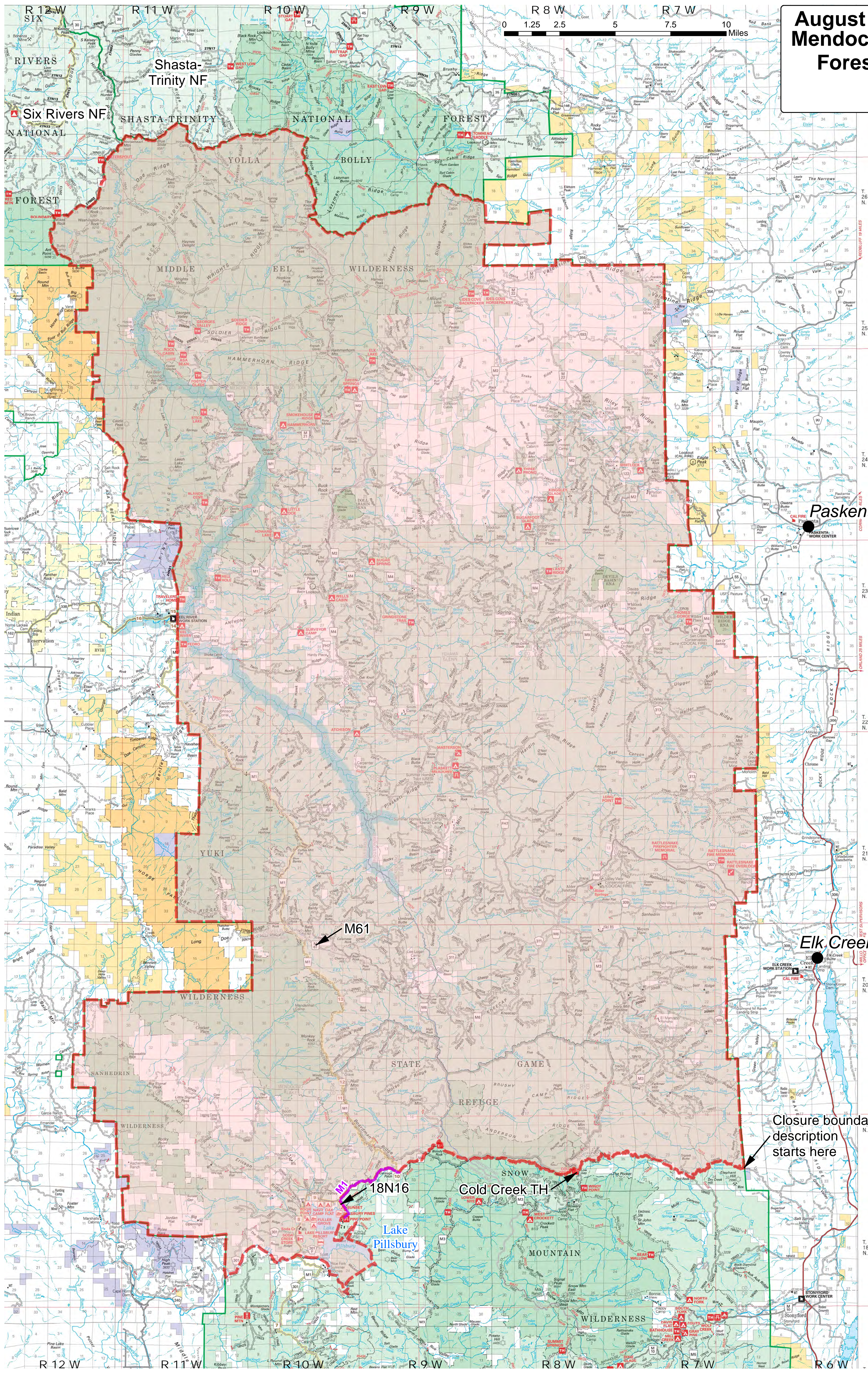
Done in Willows, California, this 18<sup>th</sup> day of September 2020.



Ann D. Carlson  
Forest Supervisor  
Mendocino National Forest

This Order supersedes Order No. 08-20-12, dated September 5, 2020.

# August Complex Fire Area Mendocino National Forest Forest Order 08-20-13 Exhibit A



### LEGEND

- Closure Area
- M1 Road Closed
- National Forest Boundary
- Ranger District Boundary
- County Boundary
- Wilderness/Special Area Boundary
- Wildlife Refuge Boundary
- Town Boundary
- Multi-Lane Highway
- Highway
- Improved Road, Paved
- Improved Road, Gravel
- Improved Road, Dirt
- Road Not Maintained for Passenger Car
- Four-Wheel Drive Road
- Motorized Use Trail
- National Recreation or Historic Trail
- Non-motorized Use Trail
- Backcountry Discovery Trail
- US Route
- State Route
- County Route
- National Forest Primary Route
- National Forest Secondary Route
- Suitable for Passenger Cars
- National Forest Secondary Route Not Suitable for Passenger Cars
- National Forest Motorized Trail
- National Forest Non-Motorized Trail
- Backcountry Discovery Trail Points of Interest

**NOTE:** Off-Highway Vehicles are prohibited on roads suitable for passenger cars unless signed otherwise.

- Mendocino National Forest
- National Forest Wilderness
- National Forest Special Interest Area
- Adjacent National Forest
- Bureau of Land Management
- Bureau of Land Management Wilderness
- State Park Land
- State Land
- Tribal Lands
- Urban Area
- Other Land

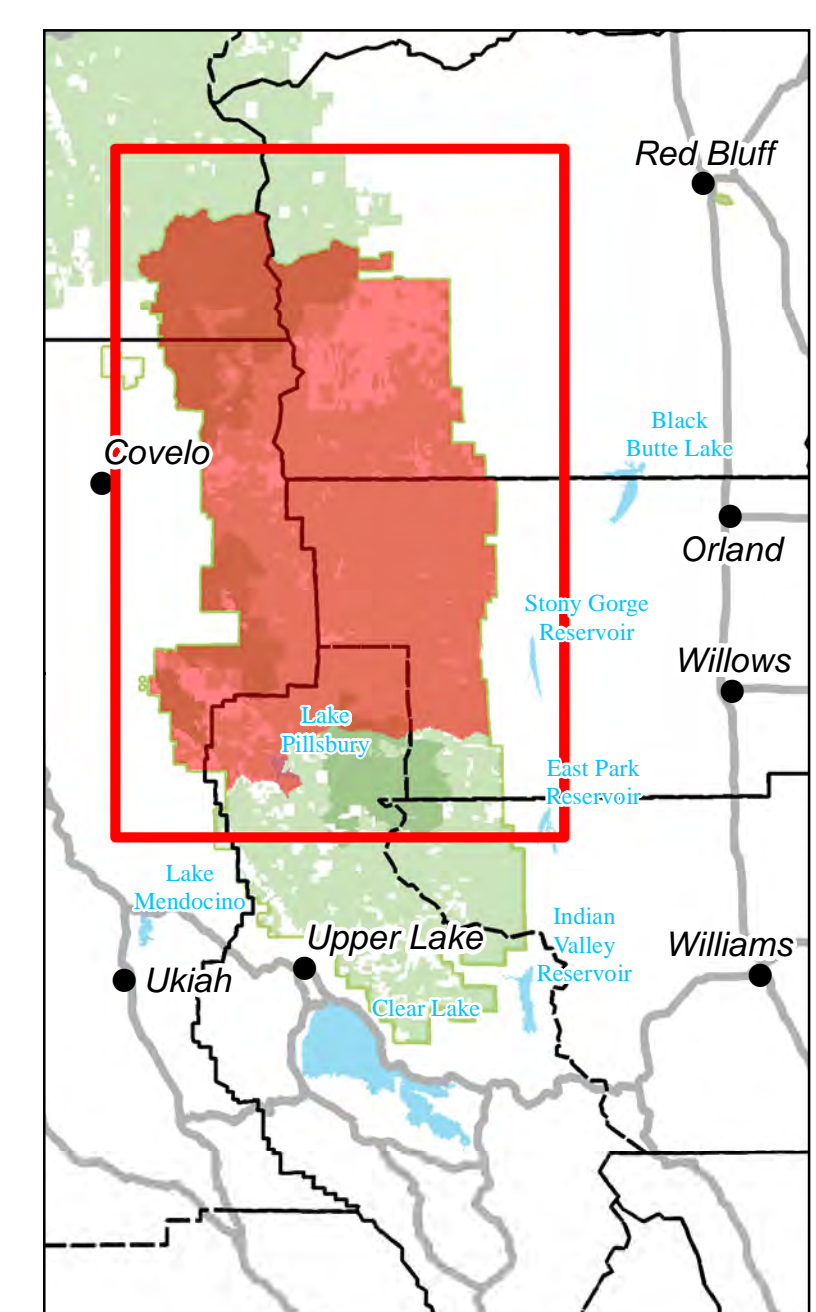
Public Lands are subject to change and leasing. Local inquiry should be made before entering.

- Ranger District Office
- Other Forest Service Facility
- Fire Station

**Forest Service - Non-Forest Service**

- Campground
- Group Campground
- Picnic Area
- Visitor Information Center
- Trailhead Parking
- Boat Launching Ramp
- OHV Area
- Sanicollection
- Grocery Store
- Lookout, Available for Rent
- Resort

- Lookout, Closed to Public
- Helipad
- Locked Gate: Permanent Closure
- Locked Gate: Seasonal Closure
- Located or Landmark Object
- House, Cabin, or other Building
- School
- Mine, Quarry
- Gaging Station
- Water Tank
- Freeway Interchange
- Powerline
- Railroad
- Perennial Stream
- Intermittent Stream
- Aqueduct/Tunnel
- Spring, Well, Falls
- Wild and Scenic River
- Marsh
- SandWash



Closure boundary description starts here

M61

18N16

Cold Creek TH

Lake Pillsbury

Elk Creek

Paskenta

**MENDOCINO NATIONAL FOREST  
FOREST ORDER NO. 08-20-13  
AUGUST COMPLEX FIRE CLOSURE  
EXHIBIT B**

The boundary of the August Fire Complex Closure Area begins in the northeastern corner of Section 35, T. 19 N., R. 6 W. at the intersection of the Mendocino National Forest boundary and Forest Road No. 18N38, then continues west along the north side of Forest Road No. 18N38 to Forest Road No. 18N02, then continues west along the north side of Forest Road No. 18N02 to the Cold Creek Trailhead, then continues west along the north side of Forest Trail No. 8W18 to its intersection with Forest Trail No. 9W32, then continues northwest along the north side of Forest Trail No. 9W32 to Bloody Rock Trail and Forest Road M6, thence south along the east side of M6 to the intersection with Forest Road M1, then south along the east side of Forest Road M1 to the intersection with Forest Road 18N16 thence south along the east side of 18N16 to the Pillsbury shore line: thence west and south along the Pillsbury shoreline to the intersection with Eel river; thence west along the south side of the Eel river to the Forest Boundary; thence north along the western Forest Boundary to its intersection with the boundary of the Six Rivers National Forest, then continues northeast along the Forest boundary to its intersection with the boundary of the Shasta Trinity National Forest, then continues eastward along the Forest boundary to its intersection with the eastern Forest boundary, then continues southward along the Forest boundary back to the starting point, as shown on Exhibit A.

MENDOCINO NATIONAL FOREST  
 FOREST ORDER NO. 08-20-13  
 AUGUST COMPLEX FIRE CLOSURE  
 EXHIBIT C

Forest Road No.:	25N09	24N43A	24N110	23N71B	23N30	23N02
	25N08B	24N43	24N11	23N71A	23N29	22N95
	25N08	24N41D	24N108	23N71	23N28	22N93
M9	25N06	24N41	24N107	23N69	23N27	22N92
M61	25N02	24N40	24N105	23N65B	23N26B	22N90A
M6	24N97	24N39	24N100	23N65	23N26	22N90
M4	24N91	24N38B	24N10	23N64	23N25	22N80
M3	24N90B	24N38	24N06	23N63	23N24	22N79
M22	24N90	24N36B	24N05D	23N62	23N22	22N76
M21	24N87	24N36A	24N05C	23N61	23N21	22N75
M2	24N82	24N36	24N05A	23N60	23N19	22N73
M1	24N81	24N35	24N05	23N59	23N17A	22N72
26N01	24N80D	24N34	24N04B	23N58	23N17	22N70A
25N66	24N80C	24N33	24N04	23N57A	23N16	22N70
25N50	24N80B	24N31	24N01K	23N57	23N14	22N69
25N49A	24N80A	24N30A	24N01G	23N55	23N12	22N68
25N49	24N80	24N30	24N01F	23N54	23N111	22N66
25N47	24N76	24N29	24N01E	23N53	23N110A	22N65
25N45	24N75A	24N26B	24N01D	23N51D	23N110	22N64
25N44A	24N75	24N26	24N01C	23N51A	23N11	22N60
25N44	24N74	24N25	24N01B	23N51	23N109A	22N59
25N42	24N73	24N24	24N01A	23N50A	23N109	22N58
25N41	24N69	24N23A	24N01	23N50	23N103	22N57
25N39	24N68	24N23	23N99	23N48	23N101	22N56
25N38A	24N67	24N21K	23N94	23N47A	23N100	22N55A
25N38	24N65	24N21	23N91	23N47	23N10	22N55
25N37A	24N62B	24N20	23N90	23N46D	23N08B	22N54
25N37	24N62	24N19	23N89A	23N46C	23N08A	22N53C
25N34A	24N61A	24N17	23N89	23N46	23N08	22N53B
25N34	24N61	24N16	23N87	23N43	23N07B	22N53A
25N30	24N60	24N15	23N83	23N42	23N07A	22N53
25N29	24N57	24N14A	23N82	23N41	23N07	22N52A
25N28	24N56	24N14	23N81	23N39	23N06	22N52
25N24	24N54	24N13K	23N80	23N38A	23N05B	22N51A
25N21C	24N53A	24N13H	23N78	23N38	23N05	22N51
25N21	24N53	24N13E	23N77	23N37A	23N04K	22N50
25N19C	24N52	24N13C	23N75	23N37	23N04B	22N48
25N19A	24N51	24N13	23N74B	23N36	23N04	22N47B
25N19	24N50B	24N11A	23N74	23N35A	23N03	22N47
25N18A	24N50	24N112	23N71E	23N35	23N02R	22N46
25N18	24N48	24N111A	23N71D	23N33	23N02F	22N44B
25N14	24N47	24N111	23N71C	23N31	23N02A	22N44
25N09B						

MENDOCINO NATIONAL FOREST  
 FOREST ORDER NO. 08-20-13  
 AUGUST COMPLEX FIRE CLOSURE  
 EXHIBIT C

22N42A	22N13	21N66	21N34	21N07B	20N63	20N26
22N42	22N12	21N65	21N33	21N07A	20N62	20N25A
22N41B	22N11N	21N62	21N32C	21N07	20N61	20N25
22N41A	22N11M	21N61	21N32	21N06D	20N60A	20N24G
22N41	22N11J	21N59	21N31C	21N06C	20N60	20N24F
22N40	22N11E	21N57	21N31	21N06B	20N59B	20N24C
22N39	22N11D	21N56	21N30	21N06	20N59	20N24A
22N36	22N11A	21N52	21N299	21N04	20N58	20N24
22N35B	22N11	21N50	21N29	21N03	20N57	20N23E
22N35A	22N10A	21N49	21N28	20N99C	20N55B	20N23D
22N35	22N10	21N47	21N27A	20N99B	20N55A	20N23A
22N34	22N07	21N45C	21N27	20N99A	20N55	20N23
22N31	22N06C	21N45B	21N26C	20N99	20N54A	20N22A
22N30	22N06B	21N45A	21N26A	20N97	20N54	20N229
22N29C	22N06A	21N45	21N26	20N91	20N53A	20N22
22N29A	22N06	21N43A	21N25	20N90A	20N53	20N21A
22N29	22N05	21N43	21N24C	20N90	20N51	20N211
22N28	22N04	21N42	21N24	20N89	20N50	20N210
22N27A	22N03	21N41L	21N23A	20N86	20N49	20N21
22N27	22N02D	21N41K	21N23	20N85	20N48B	20N209
22N26A	22N02B	21N41J	21N223	20N84	20N48	20N204
22N26	22N02	21N41I	21N22	20N81	20N47	20N201
22N24	22N01	21N41H	21N216	20N80A	20N45	20N20
22N23A	21N93A	21N41G	21N215	20N80	20N44	20N19
22N23	21N93	21N41F	21N21	20N79	20N42	20N18
22N22A	21N88A	21N41E	21N207F	20N78	20N41	20N17
22N22	21N88	21N41C	21N207	20N75A	20N39	20N16F
22N21	21N87	21N41B	21N206	20N75	20N38	20N16
22N20	21N85A	21N41A	21N19	20N74	20N36C	20N15
22N19	21N85	21N41	21N17A	20N72	20N36	20N13
22N18	21N84	21N40F	21N17	20N71D	20N35	20N128
22N17	21N83	21N40E	21N16A	20N71C	20N34D	20N126A
22N16A	21N82	21N40D	21N16	20N71B	20N34C	20N126
22N16	21N80	21N40C	21N15F	20N71A	20N34B	20N125
22N15C	21N79	21N40A	21N15C	20N71	20N34	20N121
22N15B	21N75A	21N40	21N15B	20N70	20N33	20N11D
22N15A	21N75	21N39B	21N15A	20N68	20N32A	20N118
22N15	21N74	21N39A	21N15	20N67C	20N32	20N117
22N14B	21N73	21N39	21N12	20N67	20N27C	20N114
22N14	21N70	21N38A	21N10A	20N64A	20N27A	20N113
22N13B	21N67F	21N38	21N10	20N64	20N27	20N112
22N13A	21N67	21N37	21N07D	20N63A	20N26B	20N111A

MENDOCINO NATIONAL FOREST  
FOREST ORDER NO. 08-20-13  
AUGUST COMPLEX FIRE CLOSURE  
EXHIBIT C

20N111	19N13B
20N110	19N13A
20N11	19N13
20N10A	19N06C
20N107	19N06B
20N106	19N06
20N105	19N04
20N104	19N02
20N103	18N16
20N102	20N04
20N101A	19N51
20N101	19N16A
20N100	18N07
20N10	20N14
20N09	21N17
20N07	21N18
20N06	21N11
20N05A	22N49
20N05	
20N02A	
20N02	
20N01D	
20N01C	
20N01	
19N71	
19N66	
19N60	
19N59	
19N57	
19N54	
19N50	
19N45A	
19N45	
19N37	
19N32B	
19N32A	
19N32	
19N29	
19N28	
19N27	
19N19	
19N15	

MENDOCINO NATIONAL FOREST  
 FOREST ORDER NO. 08-20-13  
 AUGUST COMPLEX FIRE CLOSURE  
 EXHIBIT C

<b>Forest</b>	DC85363	10W65
<b>Trail No.:</b>	DC85362	10W53
	DC85361	10W42
DC85616	DC85360	10W39
DC85615	DC85359	10W15
DC85614	DC85358	10W13
DC85613	DC85357	10W12
DC85612	9W80	10W10
DC85611	9W54	10W09
DC85610	9W51	10W08
DC85609	9W30	10W07
DC85608	9W17	10W06
DC85607	9W16	10W05
DC85606	9W15	10W04
DC85605	9W14	10W03
DC85604	9W07	10W02
DC85603	9W04	85467
DC85602	9W03	85466
DC85601	9W01	85469
DC85472	8W41	85463
DC85471	8W18	85460
DC85470	8W06	85461
DC85390	8W04	
DC85389	7W11	
DC85388	7W10	
DC85387	12W04	
DC85386	12W03	
DC85385	12W02	
DC85384	12W01	
DC85383	11W56	
DC85380	11W55	
DC85379	11W54	
DC85378	11W51	
DC85377	11W50	
DC85376	11W48	
DC85375	11W36	
DC85374	11W30	
DC85373	11W09	
DC85372	11W06	
DC85371	11W05	
DC85370	11W04	
DC85368	11W03	
DC85367	11W02	
DC85366	11W01	
DC85365	10W93	
DC85364	10W91	