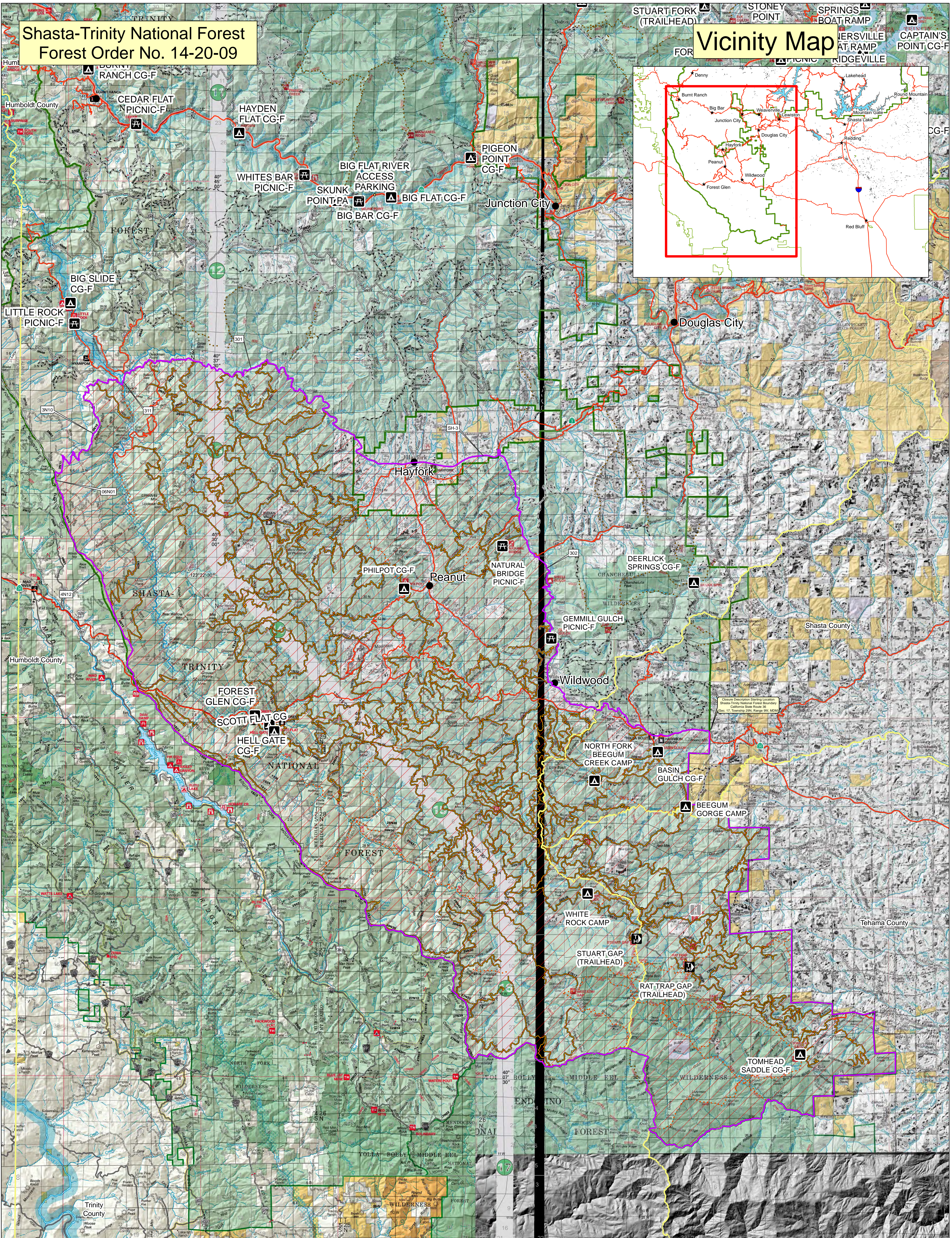
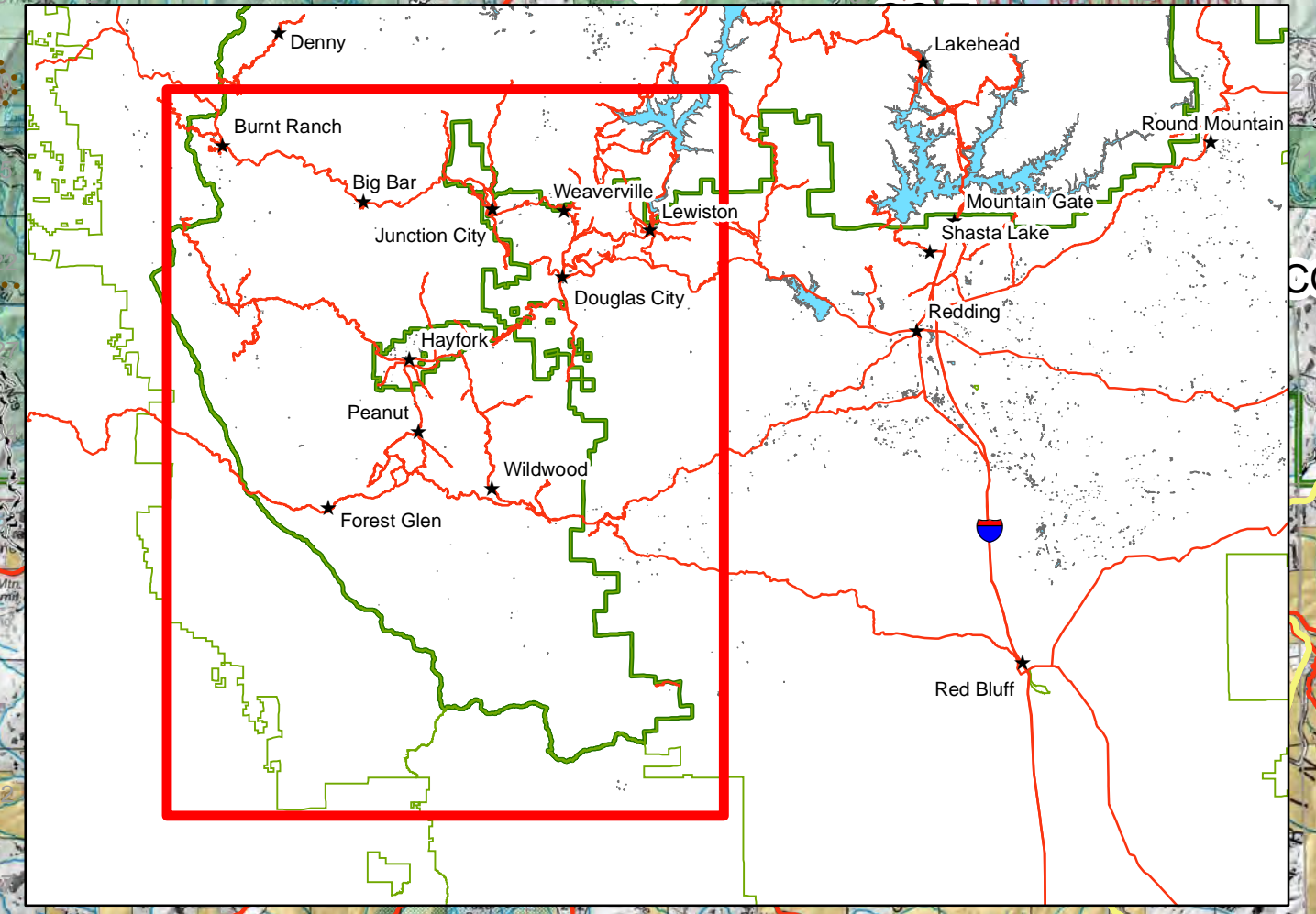
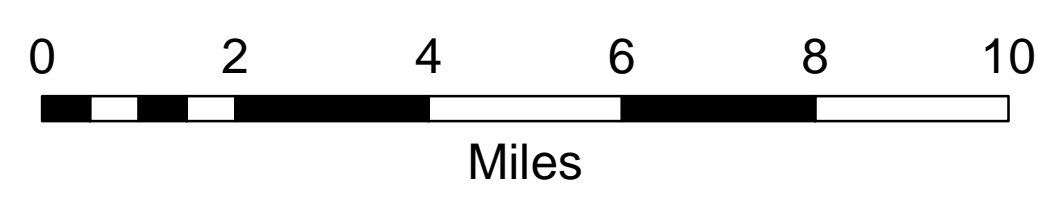


**Shasta-Trinity National Forest
Forest Order No. 14-20-09**

Vicinity Map



- | | |
|---|--------------------|
| August Complex | Towns |
| Closure Area | Post Creek Lookout |
| Temporarily Closed Trail | County Line |
| Trail | Shasta-Trinity NF |
| Temporarily Closed Road | |
| Highway | |
| Roads Open to All Vehicles, Yearlong | |
| Roads Open to All Vehicles, Seasonal | |
| Roads Open to Highway Legal Vehicles Only, Yearlong | |
| Roads Open to Highway Legal Vehicles Only, Seasonal | |



The Forest Service uses the most current and complete data available. GIS data and product accuracy may vary. Data may be developed from sources of differing accuracy, accurate only at certain scales, based on modeling or interpretation, incomplete while being created or revised. Using GIS products for purposes other than those for which they were created, may yield inaccurate or misleading results. The Forest Service reserves the right to correct, update, modify, or replace, GIS products without notification.