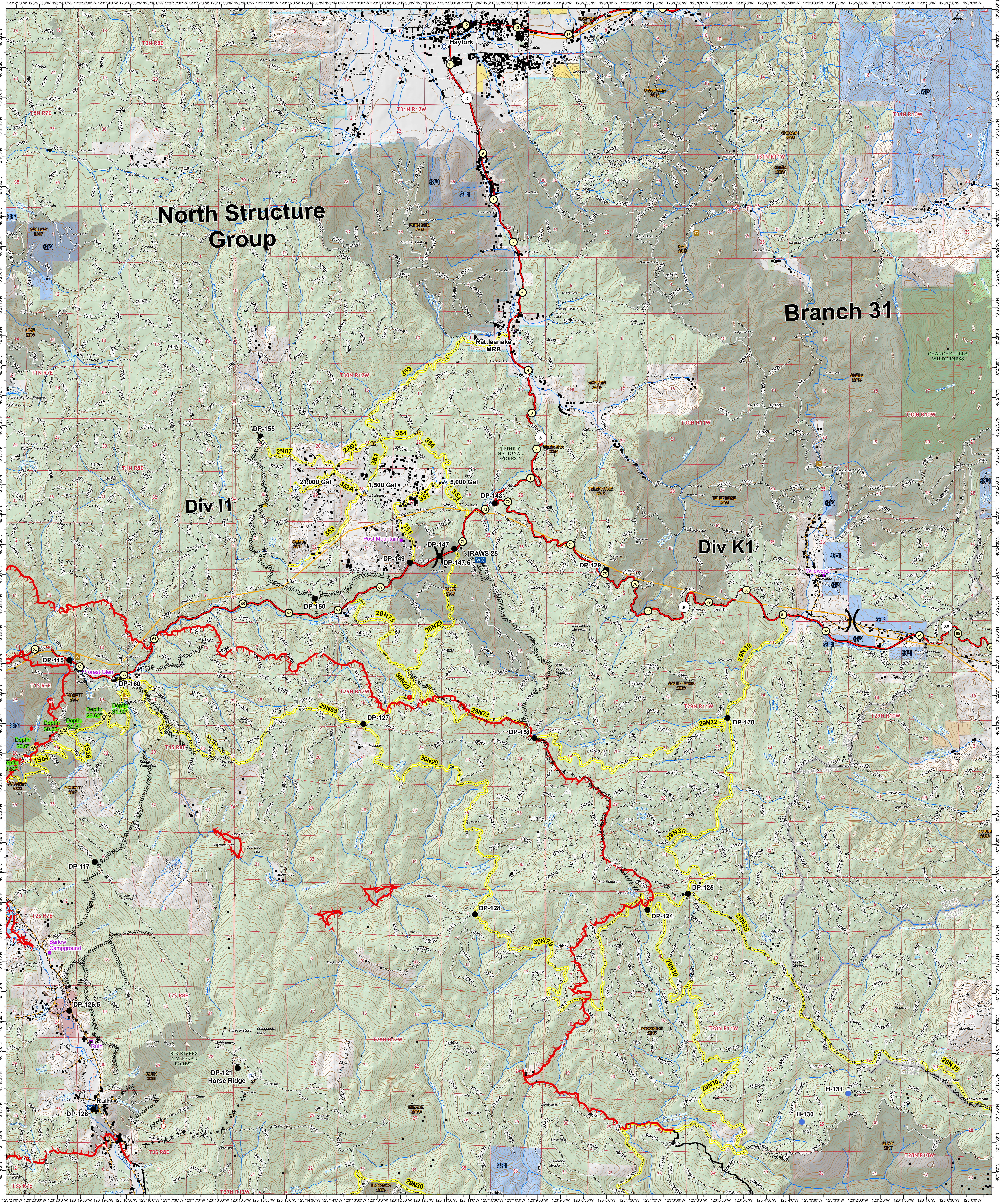


North Structure Group

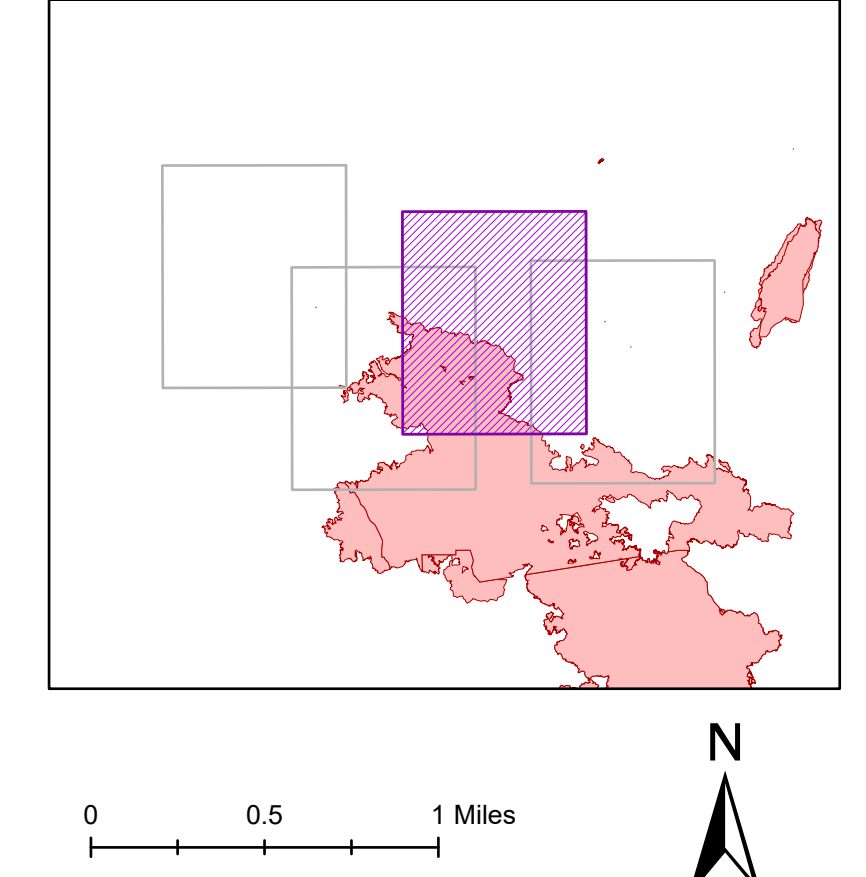
Branch 31

Div I1

Div K1



OPS Branch Breakout Map
Branch 31 West



OPS Branch Breakout Branch 31 West August Complex North Zone CA-MNF-000753 September 29, 2020



- Structures
- Dozer Avoidance Points
- Community
- Camp
- Dip Site
- Drop Point
- Helispot
- Mobile Weather Unit
- Repeater
- Safety Zone
- Spot Fire
- Water Source
- Value at Risk
- Division Break
- Uncontrolled Fire Edge
- Confined Line
- Completed Dozer Line
- Completed Hand Line
- Road as Completed Line
- Access or Improved Road
- Proposed Dozer Line
- Fence
- State Highways
- PGE Transmission Line
- PGE Distribution Line
- Highlighted Travel Routes
- Milepost
- Uncontrolled Fire Edge
- Confined Line
- Completed Dozer Line
- Completed Hand Line
- Road as Completed Line
- Access or Improved Road
- Proposed Dozer Line
- Fence
- State Highways
- PGE Transmission Line
- PGE Distribution Line
- Highlighted Travel Routes
- US Forest Service Wilderness Area
- Bureau of Land Management
- SPT Land Ownership
- Local Government
- Non-Profit Conservancies and Trusts
- CA Dept. of Forestry and Fire Protection
- CA Dept. of Parks and Recreation
- CA Dept. of Fish and Wildlife
- Other State Lands
- National Park Service
- USDA Forest Service
- Bureau of Reclamation
- Bureau of Land Management
- US Fish and Wildlife Service
- Bureau of Indian Affairs
- Department of Defense
- Fire History
- Other Federal Lands
- Tribal Trust Lands

OPS Branch Breakout Map
Branch 31 West

Datum: NAD83