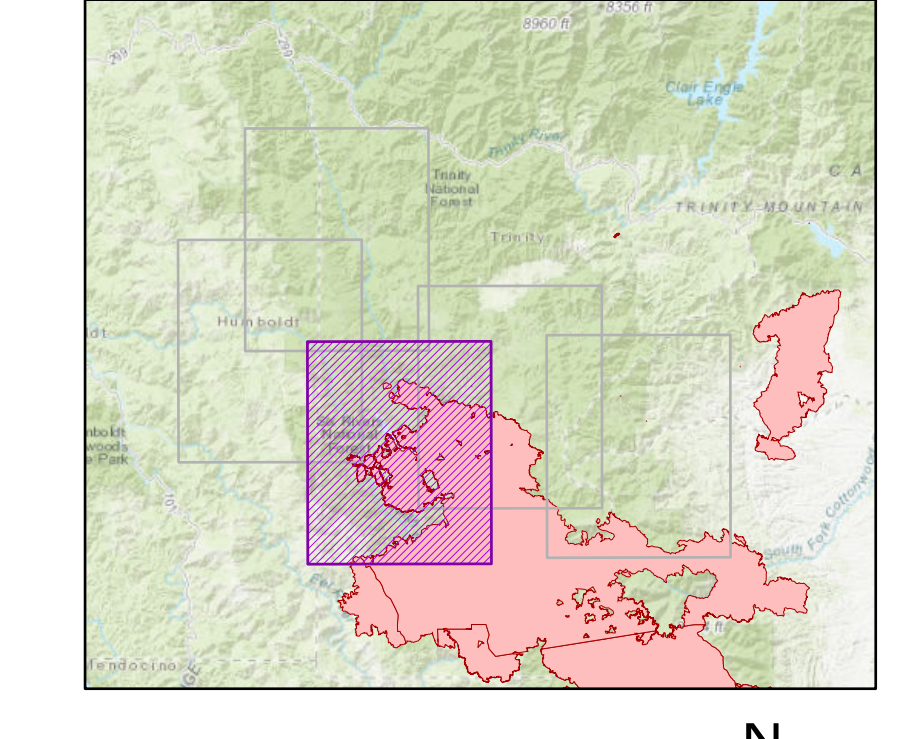


OPS Branch Breakout Map
Branch 21 South



OPS Branch Breakout

Branch 21 South

August Complex North Zone

CA-MNF-000753

October 1, 2020

- | | | |
|--|---|--|
| <ul style="list-style-type: none"> ○ Milepost ■ Structures ▲ Campground ◆ Community ● Dip Site ● Drop Point ● Helipoint ● Mobile Weather Unit ● Repeater ▲ Safety Zone ▲ Spot Fire ● Water Source ● Value at Risk ● Zone Break | <ul style="list-style-type: none"> ⌘ Division Break — Branch Break — Uncontrolled Fire Edge — Contained Line — Completed Dozer Line — Completed Hand Line — Road as Completed Line — Access or Improved Road — Proposed Dozer Line — Fence — Private Dozer Line — State Highways — PGE Transmission Line — PGE Distribution Line — Highlighted Travel Routes — Fire History | <ul style="list-style-type: none"> — CA Department of Forestry and Fire Protection — US Forest Service Wilderness Area — Bureau of Land Management — SFL Land Ownership — Local Government — Non-Profit Conservancies and Trusts — CA Dept. of Forestry and Fire Protection — CA Dept. of Parks and Recreation — CA Dept. of Fish and Wildlife — Other State Lands — National Park Service — USCA Forest Service — Bureau of Reclamation — Bureau of Land Management — US Fish and Wildlife Service — Bureau of Indian Affairs — Department of Defense — Other Federal Lands |
|--|---|--|

OPS Branch Breakout Map
Branch 21 South