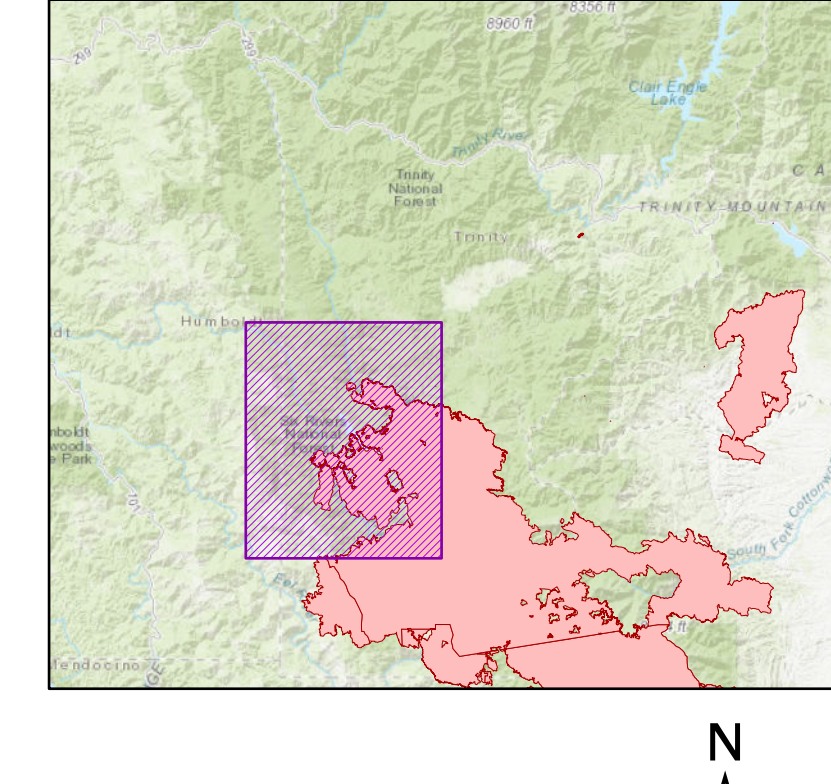


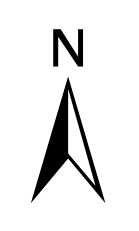
OPS Branch Breakout Map Branch 21



OPS Branch Breakout
 Branch 21
 August Complex North Zone
 CA-MNF-000753
 October 2, 2020

- | | | |
|--|---|---|
| <ul style="list-style-type: none"> ○ Milepost ■ Structures ▲ Campground ◆ Community ● Dip Site ● Drop Point ● Helispot ● Mobile Weather Unit ● Repeater ▲ Safety Zone ▲ Spot Fire ● Water Source ● Zone Break ⌘ Division Break | <ul style="list-style-type: none"> — Branch Break — Uncontrolled Fire Edge — Contained Line — Completed Dozer Line — Completed Hand Line — Road as Completed Line — Proposed Dozer Line — Temporary Flight Restriction — Fence — Private Dozer Line — State Highways — PGE Transmission Line — PGE Distribution Line — Highlighted Travel Routes — Fire History — CA Department of Forestry and Fire Protection | <ul style="list-style-type: none"> ■ US Forest Service Wilderness Area ■ Bureau of Land Management ■ SPI Land Ownership ■ Local Government ■ Non-Profit Conservancies and Trusts ■ CA Dept. of Forestry and Fire Protection ■ CA Dept. of Parks and Recreation ■ CA Dept. of Fish and Wildlife ■ Other State Lands ■ National Park Service ■ USDA Forest Service ■ Bureau of Reclamation ■ Bureau of Land Management ■ US Fish and Wildlife Service ■ Bureau of Indian Affairs ■ Department of Defense ■ Other Federal Lands |
|--|---|---|

0 0.5 1 Miles



Datum: NAD83
 Perimeter from IR collected on 10/1 at 0050 PDT and modified using MMA collected in afternoon of 10/1

OPS Branch Breakout Map Branch 21