


123°2'0"W 123°0'0"W 122°58'0"W 122°56'0"W 122°54'0"W 122°52'0"W 122°50'0"W 122°48'0"W 122°46'0"W 122°44'0"W 122°42'0"W 122°40'0"W 122°38'0"W 122°36'0"W 122°34'0"W

40°22'0"N 40°21'0"N 40°20'0"N 40°19'0"N 40°18'0"N 40°17'0"N 40°16'0"N 40°15'0"N 40°14'0"N 40°13'0"N 40°12'0"N 40°11'0"N 40°10'0"N 40°9'0"N 40°8'0"N 40°7'0"N 40°6'0"N 40°5'0"N 40°4'0"N 40°3'0"N 40°2'0"N







**MNF August Complex
North
(CA-MNF-000753)
Infrared Map**

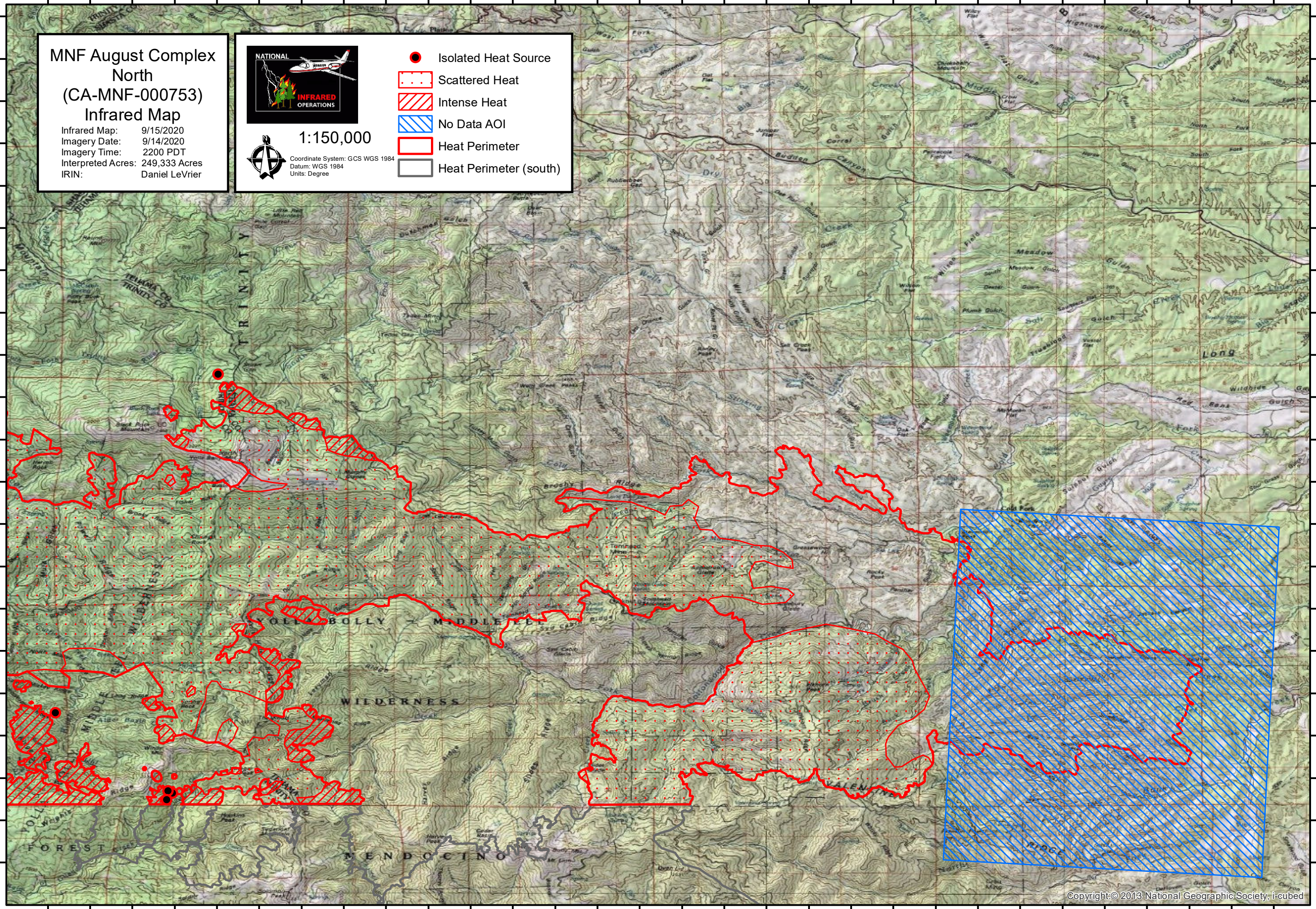
Infrared Map: 9/15/2020
 Imagery Date: 9/14/2020
 Imagery Time: 2200 PDT
 Interpreted Acres: 249,333 Acres
 IRIN: Daniel LeVrier



1:150,000

Coordinate System: GCS WGS 1984
 Datum: WGS 1984
 Units: Degree

-  Isolated Heat Source
-  Scattered Heat
-  Intense Heat
-  No Data AOI
-  Heat Perimeter
-  Heat Perimeter (south)



123°2'0"W 123°0'0"W 122°58'0"W 122°56'0"W 122°54'0"W 122°52'0"W 122°50'0"W 122°48'0"W 122°46'0"W 122°44'0"W 122°42'0"W 122°40'0"W 122°38'0"W 122°36'0"W 122°34'0"W