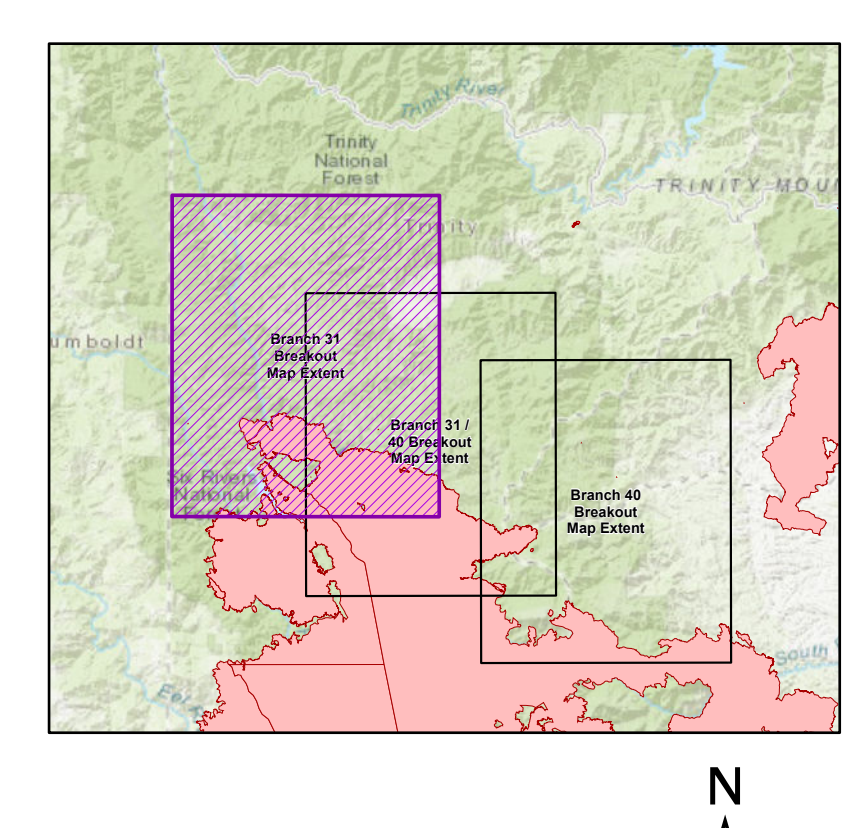


OPS Branch Breakout Map
Branch 31



OPS Branch Breakout
Branch 31
August Complex Northeast Zone
CA-MNF-000753
October 6, 2020

- | | | |
|--|---|---|
| <ul style="list-style-type: none"> ○ Milepost ■ Structures ▲ Campground ● Community ● Camp ● Dip Site ● Drop Point ● Helipoint ● Mobile Weather Unit ● Repeater ▲ Safety Zone ● Water Source ● Restricted Water Source ● Value at Risk | <ul style="list-style-type: none"> — Zone Break — Division Break — Branch Break — Uncontrolled Fire Edge — Completed Dozer Line — Completed Hand Line — Road as Completed Line — Access or Improved Road — Proposed Dozer Line — Zone Break Line — State Highways — PGE Transmission Line — PGE Distribution Line — Highlighted Travel Routes — Fire History | <ul style="list-style-type: none"> — CA Department of Forestry and Fire Protection — Bureau of Land Management — SFI Land Ownership — Local Government — Non-Profit Conservancies and Trusts — CA Dept. of Forestry and Fire Protection — CA Dept. of Parks and Recreation — CA Dept. of Fish and Wildlife — Other State Lands — National Park Service — USDA Forest Service — Bureau of Reclamation — Bureau of Land Management — US Fish and Wildlife Service — Bureau of Indian Affairs — Department of Defense — Other Federal Lands |
|--|---|---|

OPS Branch Breakout Map
Branch 31

Datum: NAD83