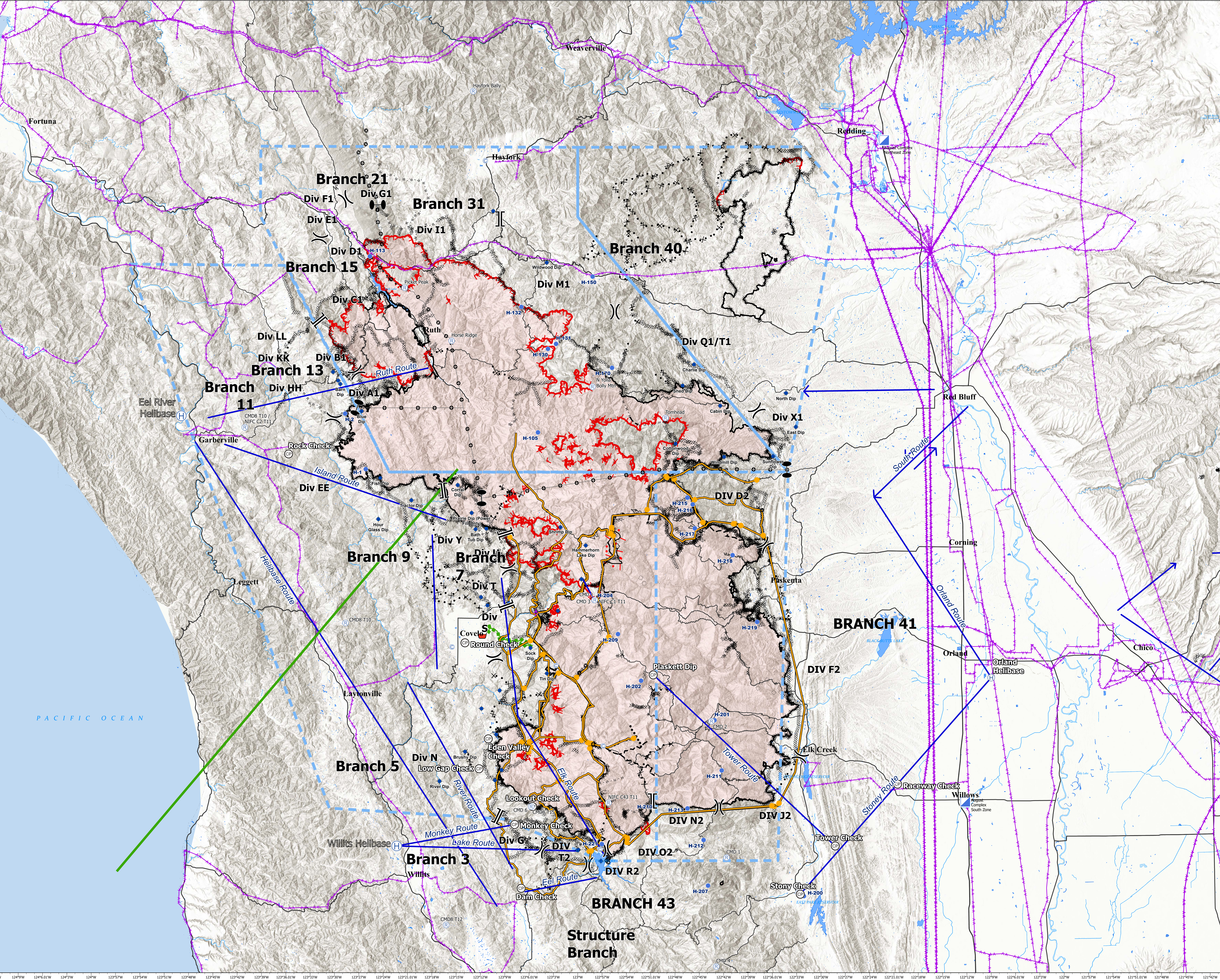


| FeatureCategory | Label | LatWGS84_DDM | LongWGS84_DDM |
|-----------------------|------------------------------|---------------|----------------|
| Camp | Base Camp - Stony Ford | 39° 36.777' N | 122° 56.851' W |
| Camp | Covelo Camp | 39° 22.668' N | 122° 32.809' W |
| Camp | Eel River Camp | 39° 46.256' N | 123° 15.620' W |
| Camp | Greenish Spike | 40° 8.378' N | 123° 49.410' W |
| Camp | Hayfork Spike | 39° 26.861' N | 123° 57.246' W |
| Camp | Paskenta Spike | 40° 32.875' N | 123° 11.608' W |
| Camp | Ridge/Poison Spike Camp | 39° 53.522' N | 122° 32.163' W |
| Camp | Anthony Dip | 39° 49.728' N | 123° 02.468' W |
| Dip Site | Barn Dip | 40° 11.431' N | 123° 29.671' W |
| Dip Site | Barns Dip | 39° 26.781' N | 123° 0.024' W |
| Dip Site | Bath Tub Dip | 39° 57.547' N | 123° 12.727' W |
| Dip Site | Blue Dip | 40° 8.827' N | 123° 26.992' W |
| Dip Site | Brushy Dip | 39° 36.217' N | 123° 13.969' W |
| Dip Site | Cabin Dip | 40° 09.370' N | 122° 42.200' W |
| Dip Site | Charlie Dip | 39° 13.340' N | 122° 45.460' W |
| Dip Site | Carroll Dip | 40° 1.772' N | 123° 14.963' W |
| Dip Site | Cottonwood Dip | 40° 05.740' N | 122° 47.780' W |
| Dip Site | East Dip | 40° 07.310' N | 122° 32.760' W |
| Dip Site | Faraway Dip | 39° 26.820' N | 122° 59.923' W |
| Dip Site | Fish Dip | 40° 2.430' N | 123° 24.640' W |
| Dip Site | Greenhouse Dip | 39° 57.604' N | 123° 13.293' W |
| Dip Site | Hammerhorn Lake Dip | 39° 56.000' N | 122° 56.001' W |
| Dip Site | Horseshoe Dip | 39° 34.464' N | 123° 9.436' W |
| Dip Site | Hour Glass Dip | 39° 58.480' N | 123° 24.850' W |
| Dip Site | Howard's Lake Dip | 39° 52.768' N | 122° 59.543' W |
| Dip Site | Lake Pillsbury Dip | 39° 25.744' N | 122° 57.134' W |
| Dip Site | Lighting Dip | 39° 57.604' N | 123° 13.293' W |
| Dip Site | Liv Dip TYPE 2 LONGLINE ONLY | 39° 33.484' N | 123° 10.248' W |
| Dip Site | Long Dip | 39° 50.251' N | 123° 11.227' W |
| Dip Site | North Dip | 40° 10.560' N | 122° 33.960' W |
| Dip Site | Oak Dip | 39° 51.036' N | 123° 12.034' W |
| Dip Site | Plaskett Dip | 39° 43.541' N | 122° 50.517' W |
| Dip Site | Prarie Dip (Power Fill Only) | 39° 59.110' N | 123° 12.220' W |
| Dip Site | Rattlesnake Mts | 40° 28.650' N | 123° 10.606' W |
| Dip Site | River Dip | 39° 33.378' N | 123° 17.120' W |
| Dip Site | Runway Dip | 39° 37.870' N | 123° 10.109' W |
| Dip Site | Shed Dip | 40° 11.310' N | 122° 46.883' W |
| Dip Site | Shrimp Dip | 39° 57.750' N | 123° 02.151' W |
| Dip Site | Snag Dip | 39° 40.552' N | 123° 1.943' W |
| Dip Site | Sock Dip | 39° 46.177' N | 123° 5.871' W |
| Dip Site | Sunflower Dip | 40° 04.510' N | 122° 35.620' W |
| Dip Site | Tin Dip | 39° 43.732' N | 123° 3.828' W |
| Dip Site | Tractor Dip | 40° 0.310' N | 123° 20.740' W |
| Dip Site | Trash Dip | 40° 11.750' N | 123° 29.951' W |
| Dip Site | Tree Dip | 39° 42.696' N | 123° 12.691' W |
| Dip Site | Wildwood Dip | 40° 23.113' N | 123° 03.883' W |
| Dip Site | Windmill Dip | 40° 04.470' N | 122° 41.730' W |
| Dip Site | Wire Dip | 40° 12.567' N | 123° 30.597' W |
| Helibase | Eel River Helibase | 40° 8.253' N | 123° 49.521' W |
| Helibase | Willits Helibase | 39° 27.153' N | 122° 32.399' W |
| Helibase | H-1 | 40° 3.271' N | 123° 36.460' W |
| Helispot | H-105 | 40° 06.637' N | 123° 04.565' W |
| Helispot | H-113 | 40° 23.675' N | 123° 26.057' W |
| Helispot | H-130 | 40° 14.848' N | 123° 03.727' W |
| Helispot | H-131 | 40° 15.325' N | 123° 02.714' W |
| Helispot | H-132 | 40° 18.863' N | 123° 07.066' W |
| Helispot | H-150 | 40° 21.777' N | 122° 58.134' W |
| Helispot | H-170 | 40° 13.030' N | 122° 55.709' W |
| Helispot | H-2 | 40° 08.581' N | 123° 29.051' W |
| Helispot | H-200 | 39° 22.322' N | 122° 32.047' W |
| Helispot | H-201 | 39° 39.221' N | 122° 43.031' W |
| Helispot | H-202 | 39° 43.027' N | 122° 52.131' W |
| Helispot | H-204 | 39° 50.777' N | 122° 57.878' W |
| Helispot | H-207 | 39° 23.366' N | 122° 43.896' W |
| Helispot | H-209 | 39° 47.499' N | 122° 54.999' W |
| Helispot | H-210 | 39° 31.492' N | 122° 50.755' W |
| Helispot | H-211 | 39° 34.406' N | 122° 42.162' W |
| Helispot | H-212 | 39° 27.743' N | 122° 44.430' W |
| Helispot | H-213 | 39° 20.739' N | 122° 46.412' W |
| Helispot | H-215 | 40° 00.571' N | 122° 46.321' W |
| Helispot | H-216 | 39° 59.918' N | 122° 45.668' W |
| Helispot | H-217 | 39° 57.631' N | 122° 45.413' W |
| Helispot | H-218 | 39° 55.042' N | 122° 40.716' W |
| Helispot | H-219 | 39° 48.632' N | 122° 37.690' W |
| Helispot | H-221 | 39° 27.600' N | 122° 57.009' W |
| Incident Command Post | Incident Command Post | 39° 31.261' N | 122° 12.017' W |
| Mobile Weather Unit | Alder Point | 39° 48.448' N | 122° 56.702' W |
| Mobile Weather Unit | Alder Springs | 40° 11.181' N | 123° 35.452' W |
| Mobile Weather Unit | Eagle Peak | 39° 39.037' N | 122° 43.471' W |
| Mobile Weather Unit | Eel River | 39° 49.517' N | 123° 04.951' W |
| Mobile Weather Unit | IRAWS 13 | 39° 32.396' N | 122° 57.009' W |
| Mobile Weather Unit | IRAWS 14 | 40° 0.399' N | 123° 2.455' W |
| Mobile Weather Unit | IRAWS 23 | 40° 24.263' N | 123° 21.734' W |
| Mobile Weather Unit | IRAWS 25 | 40° 24.263' N | 123° 10.790' W |
| Mobile Weather Unit | IRAWS 27 | 40° 12.288' N | 122° 55.195' W |
| Mobile Weather Unit | IRAWS 31 | 40° 0.154' N | 123° 14.999' W |
| Mobile Weather Unit | IRAWS 47 | 39° 43.712' N | 123° 5.989' W |
| Mobile Weather Unit | Island Mtn | 40° 2.709' N | 123° 34.632' W |
| Mobile Weather Unit | Laytonville | 40° 22.098' N | 123° 29.143' W |
| Mobile Weather Unit | McCum's | 39° 21.159' N | 123° 36.948' W |
| Mobile Weather Unit | Mendocino Pass | 39° 48.426' N | 122° 56.674' W |
| Mobile Weather Unit | Monkey Rock | 39° 32.419' N | 122° 57.121' W |
| Mobile Weather Unit | Pookinney West | 39° 44.007' N | 123° 18.337' W |
| Mobile Weather Unit | Portable | 39° 18.514' N | 122° 56.386' W |
| Mobile Weather Unit | Reynolds Highway | 39° 26.757' N | 123° 19.467' W |
| Mobile Weather Unit | Rodeo Valley | 39° 40.119' N | 123° 19.186' W |
| Mobile Weather Unit | Sock Creek | 39° 25.499' N | 122° 58.633' W |
| Mobile Weather Unit | Soldier Ridge | 40° 00.487' N | 123° 02.504' W |
| Mobile Weather Unit | Stonyford | 39° 22.037' N | 122° 34.373' W |
| Mobile Weather Unit | Thomes Creek | 39° 51.253' N | 122° 36.595' W |
| Mobile Weather Unit | Zenia | 40° 12.274' N | 123° 29.999' W |
| Repeater | CMD 1 | 39° 26.660' N | 123° 15.886' W |
| Repeater | CMD 2 | 39° 50.772' N | 122° 57.874' W |
| Repeater | CMD 3 | 39° 39.124' N | 122° 43.404' W |
| Repeater | CMD 4 | 39° 55.026' N | 122° 40.241' W |
| Repeater | CMD 6 | 39° 15.607' N | 122° 42.908' W |
| Repeater | CMD 6 | 39° 30.953' N | 123° 05.760' W |
| Repeater | CMD 8 | 39° 48.509' N | 123° 38.971' W |
| Repeater | CMD 8 T10 / NIFC C2 T11 | 40° 7.194' N | 123° 41.581' W |
| Repeater | CMD 8 T12 | 39° 19.596' N | 123° 16.249' W |
| Repeater | CMD 8 T15 | 39° 30.956' N | 123° 5.762' W |
| Repeater | Hayfork Bally | 40° 39.534' N | 123° 13.151' W |
| Repeater | Horse Ridge | 40° 15.600' N | 123° 15.794' W |
| Repeater | N Hole Bolly Mtn | 40° 11.212' N | 123° 08.174' W |
| Repeater | NIFC C1 T11 | 39° 50.774' N | 122° 57.880' W |
| Repeater | NIFC C43 T11 | 39° 31.321' N | 122° 56.203' W |
| Repeater | Picket Peak | 40° 20.667' N | 123° 21.684' W |
| Repeater | Tomhead | 40° 08.216' N | 122° 49.050' W |
| Repeater | West MRB | 39° 47.255' N | 123° 11.872' W |

Air Ops
August Complex
 CA-MNF-000753
 10/08/2020



Nautical Miles

- Checkpoint
- Ⓜ Helibase
- ⚡ Aerial Hazard
- Dip Site
- Ⓜ Helibase
- Helispot
- Ⓜ Incident Command Post
- Ⓜ Repeater
- Ⓜ Retardant/Mud Pit
- Ⓜ Camp
- Ⓜ Branch Break
- Ⓜ Division Break
- Ⓜ Zone Break

- Aviation Routes
- Ⓜ Aviation Obstacle
- Ⓜ Retardant/Mud Pit
- Ⓜ Contained Line
- Ⓜ Completed Dozer Line
- Ⓜ Completed Hand Line
- Ⓜ Access or Improved Road
- Ⓜ Active Burnout
- Ⓜ Completed Burnout
- Ⓜ Proposed Dozer Line
- Ⓜ Planned Fire Line
- Ⓜ Planned Secondary Line
- Ⓜ Road as Completed Line
- Ⓜ Road
- Ⓜ Road Repair

- Ⓜ Aerial Retardant Drop
- Ⓜ Air Tanker Retardant
- Ⓜ Temporary Flight Restriction
- Ⓜ Escape Route
- Ⓜ Ridge/Geographic Feature
- Ⓜ Wildfire Daily Fire Perimeter
- Ⓜ Management Action Point
- Ⓜ Other
- Ⓜ Comms Plan Break Line

mattdickinson
 10/7/2020 2339
 Acres from IR
 North American 1983