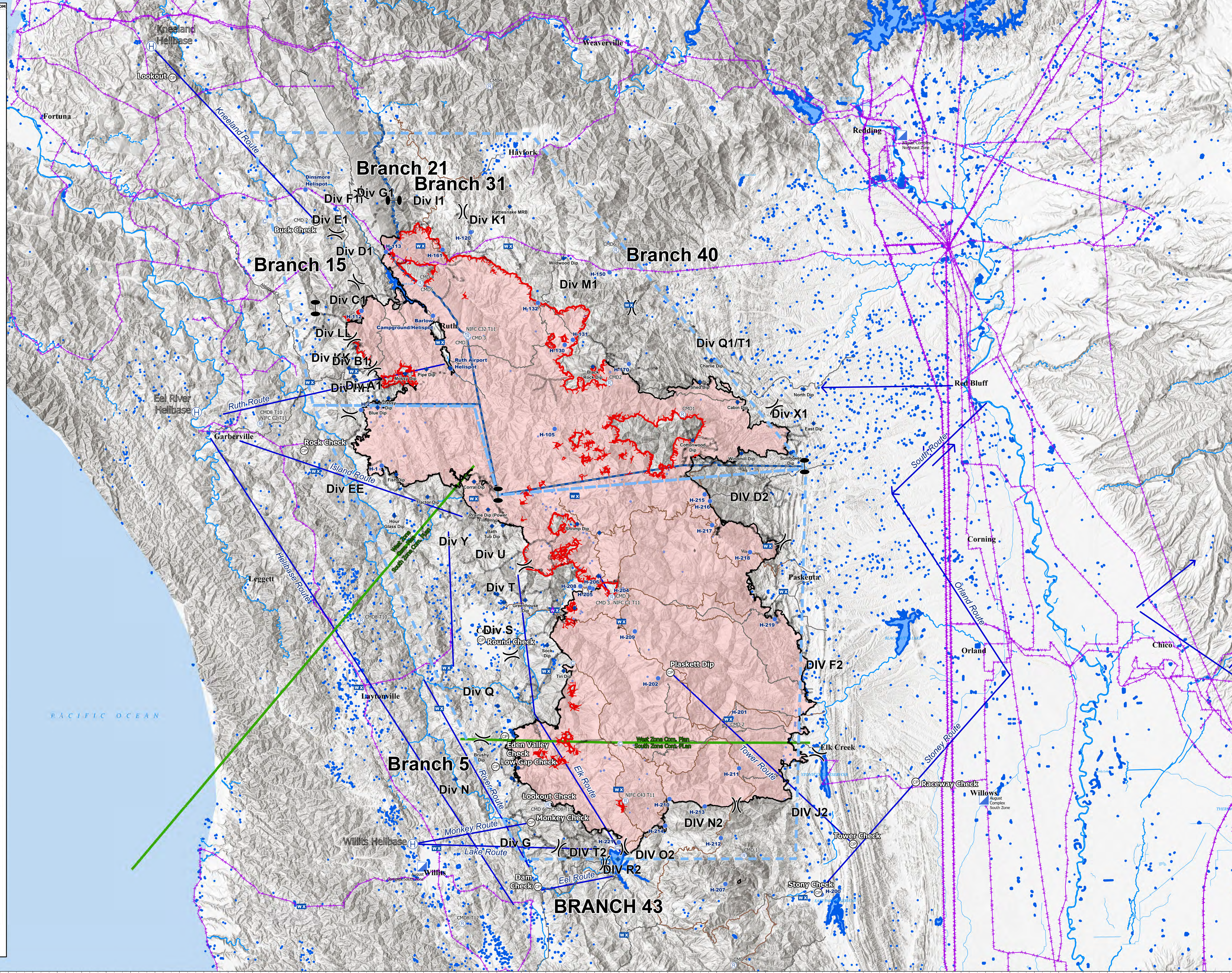
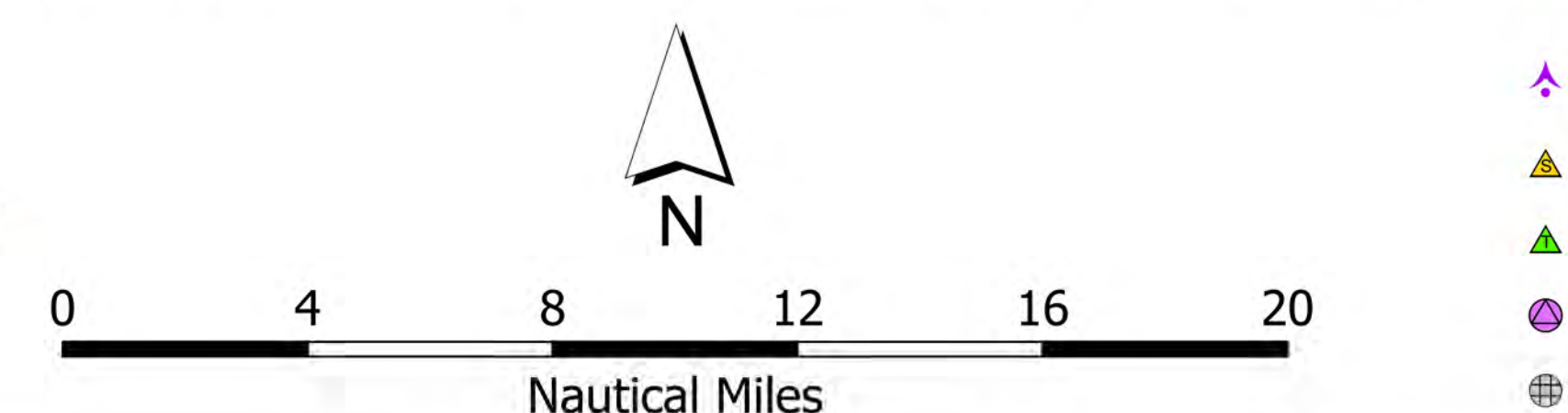


FeatureCategory	Label	LatWGS84_DDM	LongWGS84_DDM
Camp	Base Camp - Stony Ford	39° 36.777' N	122° 56.851' W
Camp	Covey Camp	39° 22.668' N	122° 32.809' W
Camp	Eel River Camp	39° 46.256' N	122° 15.620' W
Camp	Gravelly Spike	39° 26.861' N	122° 57.246' W
Camp	Hayfork Spike	40° 32.875' N	123° 11.608' W
Camp	Meadows Spike	40° 26.541' N	123° 41.233' W
Camp	Peskenta Spike	39° 53.522' N	122° 33.163' W
Camp	Ridge/Poison Spike Camp	39° 44.663' N	122° 02.208' W
Camp	TLC Spike	40° 26.743' N	123° 39.460' W
Dip Site	Airport Dip	40° 12.613' N	123° 18.016' W
Dip Site	Anthony Dip	39° 49.728' N	123° 02.468' W
Dip Site	Barn Dip	40° 11.431' N	122° 29.671' W
Dip Site	Barns Dip	39° 26.811' N	122° 02.024' W
Dip Site	Bath Tub Dip	39° 57.547' N	123° 12.727' W
Dip Site	Black Rock Dip	40° 12.760' N	123° 0.218' W
Dip Site	Blue Dip	40° 8.827' N	123° 26.992' W
Dip Site	Brushy Dip	39° 36.217' N	122° 13.969' W
Dip Site	Cabin Dip	40° 09.707' N	122° 42.200' W
Dip Site	Charlie Dip	40° 13.340' N	122° 45.450' W
Dip Site	Corral Dip	40° 1.772' N	123° 14.965' W
Dip Site	Cottonwood Dip	40° 05.740' N	122° 47.780' W
Dip Site	East Dip	40° 07.310' N	122° 32.780' W
Dip Site	Farway Dip	39° 26.820' N	122° 50.822' W
Dip Site	Fish Dip	40° 2.430' N	123° 24.640' W
Dip Site	Grassy Dip	40° 9.720' N	123° 25.640' W
Dip Site	Greenhouse Dip	39° 50.475' N	123° 8.579' W
Dip Site	Hammerhorn Lake Dip	39° 56.000' N	122° 59.001' W
Dip Site	Henriksen Dip	39° 34.664' N	122° 9.430' W
Dip Site	Hour Glass Dip	39° 58.480' N	123° 24.850' W
Dip Site	Howard's Lake Dip	39° 52.768' N	122° 59.543' W
Dip Site	Lake Pillsbury Dip	39° 25.744' N	122° 57.134' W
Dip Site	Lightning Dip	39° 57.604' N	122° 11.399' W
Dip Site	Lily Dip TYPE 1 LONGLINE ONLY	39° 23.484' N	122° 12.240' W
Dip Site	Lung Dip	39° 50.251' N	123° 11.227' W
Dip Site	Mossy Dip	40° 12.040' N	123° 23.560' W
Dip Site	North Dip	40° 10.560' N	122° 33.960' W
Dip Site	Oak Dip	39° 51.036' N	122° 12.034' W
Dip Site	Pipe Dip	40° 12.400' N	122° 20.822' W
Dip Site	Plaskett Dip	39° 43.541' N	122° 50.517' W
Dip Site	Prairie Dip (Power Fill Only)	39° 59.110' N	123° 13.220' W
Dip Site	Rattlesnake MRB	40° 28.050' N	123° 10.600' W
Dip Site	River Dip	39° 33.278' N	122° 17.120' W
Dip Site	Rumsey Dip	39° 27.807' N	122° 10.100' W
Dip Site	Shed Dip	40° 11.310' N	122° 46.883' W
Dip Site	Shrimp Dip	39° 57.750' N	123° 02.151' W
Dip Site	Snag Dip	39° 40.352' N	123° 11.943' W
Dip Site	Snock Dip	39° 46.177' N	123° 5.871' W
Dip Site	Starbush Dip	39° 04.517' N	122° 32.620' W
Dip Site	Tin Dip	39° 43.732' N	123° 3.828' W
Dip Site	Tractor Dip	40° 0.310' N	123° 20.740' W
Dip Site	Tree Dip	40° 11.750' N	123° 29.951' W
Dip Site	Trill Dip	39° 42.996' N	122° 9.693' W
Dip Site	Wildwood Dip	40° 23.117' N	122° 02.882' W
Dip Site	Windmill Dip	40° 04.470' N	122° 41.730' W
Dip Site	Wire Dip	40° 12.567' N	123° 30.597' W
Helibase	Eel River Helibase	40° 8.253' N	123° 49.521' W
Helibase	Kneeland Helibase	40° 43.140' N	122° 55.631' W
Helibase	Willits Helibase	40° 27.127' N	122° 12.399' W
Helibase	Barlow Campground/Helibase	40° 17.599' N	123° 20.146' W
Helibase	Dinsmore Helibase	40° 29.586' N	123° 36.149' W
Helibase	H-1	40° 3.270' N	123° 26.450' W
Helibase	H-105	39° 06.837' N	122° 04.960' W
Helibase	H-112	40° 18.643' N	122° 26.900' W
Helibase	H-113	40° 23.675' N	123° 26.057' W
Helibase	H-120	40° 25.58' N	123° 15.467' W
Helibase	H-130	40° 14.848' N	123° 03.727' W
Helibase	H-131	40° 15.325' N	122° 02.714' W
Helibase	H-132	40° 18.647' N	122° 07.960' W
Helibase	H-150	40° 21.777' N	122° 58.134' W
Helibase	H-161	40° 23.912' N	123° 18.985' W
Helibase	H-170	40° 13.030' N	122° 55.709' W
Helibase	H-2	40° 08.681' N	123° 29.051' W
Helibase	H-200	39° 23.322' N	122° 33.440' W
Helibase	H-201	39° 39.221' N	122° 43.031' W
Helibase	H-202	39° 43.027' N	122° 53.131' W
Helibase	H-204	39° 50.777' N	122° 57.878' W
Helibase	H-205	39° 51.565' N	122° 06.234' W
Helibase	H-206	39° 51.663' N	122° 06.611' W
Helibase	H-207	39° 23.366' N	122° 43.896' W
Helibase	H-208	39° 51.808' N	123° 01.759' W
Helibase	H-209	39° 47.999' N	122° 54.999' W
Helibase	H-210	39° 31.492' N	122° 50.750' W
Helibase	H-211	39° 34.406' N	122° 43.162' W
Helibase	H-212	39° 27.743' N	122° 44.430' W
Helibase	H-213	39° 30.779' N	122° 46.412' W
Helibase	H-214	39° 28.937' N	122° 51.291' W
Helibase	H-215	40° 00.571' N	122° 46.321' W
Helibase	H-216	39° 59.818' N	122° 45.668' W
Helibase	H-217	39° 57.631' N	122° 45.413' W
Helibase	H-218	39° 55.042' N	122° 40.716' W
Helibase	H-219	39° 48.632' N	122° 37.690' W
Helibase	H-221	39° 27.360' N	122° 57.009' W
Helibase	Ruth Airport Helibase	40° 12.567' N	122° 17.922' W
Incident Command Post	Ruth Airport Helibase	39° 31.261' N	122° 12.017' W
Incident Command Post	ICP South Zone	40° 34.746' N	122° 21.474' W
Incident Command Post	ICP North Zone	39° 25.001' N	123° 21.231' W
Mobile Weather Unit	Alder Point	39° 48.489' N	122° 56.702' W
Mobile Weather Unit	Alder Springs	40° 11.181' N	122° 38.452' W
Mobile Weather Unit	Eagle Peak	39° 39.097' N	122° 43.471' W
Mobile Weather Unit	Eel River	39° 55.617' N	122° 38.517' W
Mobile Weather Unit	Eden Valley	39° 49.517' N	123° 04.951' W
Mobile Weather Unit	TRAWS 13	39° 32.390' N	122° 57.009' W
Mobile Weather Unit	TRAWS 14	40° 0.399' N	122° 21.455' W
Mobile Weather Unit	TRAWS 23	40° 24.263' N	123° 21.734' W
Mobile Weather Unit	TRAWS 25	40° 24.263' N	123° 10.790' W
Mobile Weather Unit	TRAWS 27	40° 12.388' N	122° 55.195' W
Mobile Weather Unit	TRAWS 31	40° 0.154' N	122° 14.999' W
Mobile Weather Unit	TRAWS 47	39° 43.712' N	122° 5.989' W
Mobile Weather Unit	Island Mtn	40° 2.709' N	123° 34.632' W
Mobile Weather Unit	Laytonville	39° 42.098' N	123° 29.143' W
Mobile Weather Unit	McGuire's	39° 21.159' N	123° 36.040' W
Mobile Weather Unit	Mendocino Pass	39° 48.420' N	122° 56.674' W
Mobile Weather Unit	Monkey Rock	39° 32.418' N	122° 57.123' W
Mobile Weather Unit	Poonkinney West	39° 44.007' N	122° 18.337' W
Mobile Weather Unit	Portable	39° 18.514' N	122° 56.386' W
Mobile Weather Unit	Reynolds Highway	39° 26.757' N	123° 19.467' W
Mobile Weather Unit	Rodney Valley	39° 40.119' N	122° 15.196' W
Mobile Weather Unit	Ruth	40° 15.662' N	122° 19.290' W
Mobile Weather Unit	Soda Creek	39° 25.499' N	122° 58.633' W
Mobile Weather Unit	Soldier Ridge	40° 00.487' N	123° 02.504' W
Mobile Weather Unit	Stonyford	39° 22.037' N	122° 34.373' W
Mobile Weather Unit	Thomas Creek	39° 51.253' N	122° 36.995' W
Mobile Weather Unit	Tona	40° 12.744' N	122° 28.999' W
Repeater	CMD 1	39° 26.050' N	122° 41.596' W
Repeater	CMD 1	39° 50.772' N	122° 57.874' W
Repeater	CMD 2	39° 39.124' N	122° 43.404' W
Repeater	CMD 2	39° 26.594' N	122° 35.312' W
Repeater	CMD 3	39° 05.026' N	122° 40.241' W
Repeater	CMD 3	40° 15.670' N	123° 15.789' W
Repeater	CMD 4	39° 15.607' N	122° 42.908' W
Repeater	CMD 4	40° 20.745' N	123° 21.797' W
Repeater	CMD 6	39° 30.953' N	122° 08.760' W
Repeater	CMD3	40° 08.216' N	122° 49.050' W
Repeater	CMD2	40° 11.212' N	122° 58.174' W
Repeater	CMD3	40° 15.600' N	123° 15.784' W
Repeater	CMD4	40° 39.534' N	123° 13.151' W
Repeater	CMD5	40° 20.667' N	122° 21.884' W
Repeater	CMD5	40° 23.817' N	122° 57.350' W
Repeater	CMD8 T10	39° 48.509' N	123° 28.871' W
Repeater	CMD8 T10 / NIFC C2 T11	40° 7.194' N	123° 41.581' W
Repeater	CMD8 T12	39° 19.596' N	122° 16.249' W
Repeater	CMD8 T15	39° 30.956' N	122° 5.762' W
Repeater	NIFC C1 T11	39° 50.774' N	122° 57.888' W
Repeater	NIFC C3 T11	15° 18.800' N	123° 15.993' W
Repeater	NIFC C4 T11	39° 31.321' N	122° 56.203' W



**Air Ops**  
**August Complex**  
 CA-MNF-000753  
 10/13/2020



- Aerial Hazard
- Landing or Log Deck
- Structure Wrap
- Water Development or Draft Site
- Safety Zone
- Hazard Tree
- Hazard
- Aerial Ignition
- Temporary Refuge Area
- Retardant in Avoidance Area
- Clean Up Area
- Airstrip or Airport
- Repair Point
- Culvert
- Stream Crossing
- Closure
- Fence - Cut/Damaged
- Road Repair
- Dozer Push

brandanzimmerman  
 10/13/2020 2033  
 Acres from IR  
 North American 1983