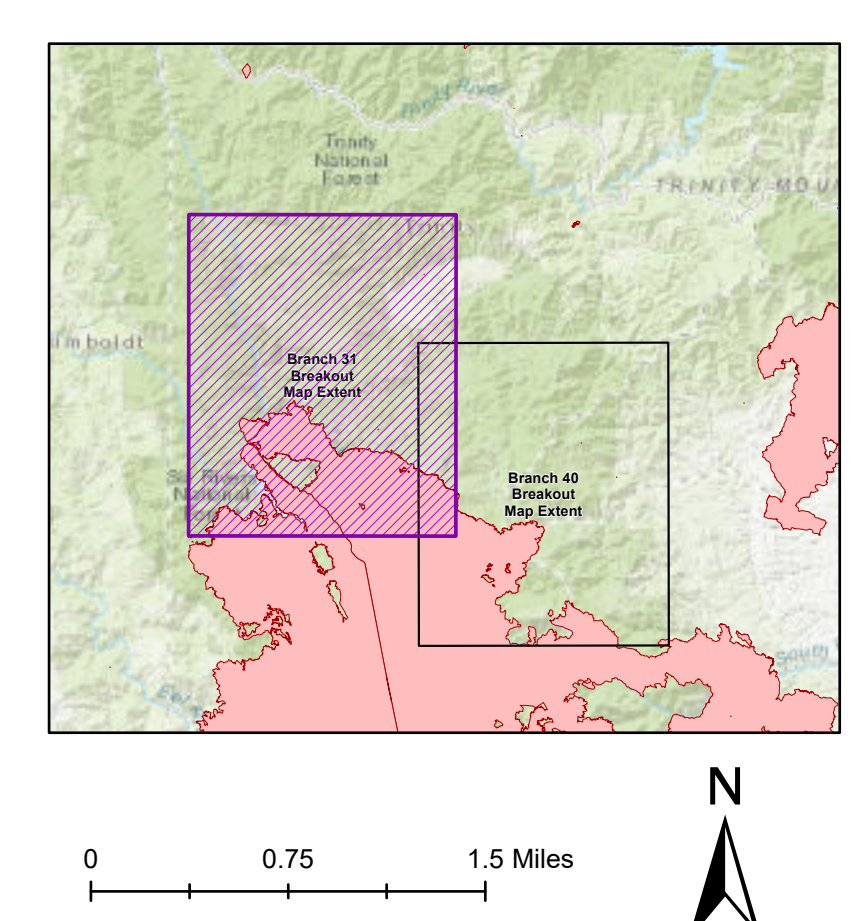


**OPS Branch Breakout Map**  
Branch 31



**OPS Branch Breakout**  
Branch 31  
**August Complex Northeast Zone**  
CA-MNF-000753  
October 16, 2020

- |  |  |  |   |
|--|--|--|---|
| <ul style="list-style-type: none"> <li>○ Milepost</li> <li>● Repair Point</li> <li>■ Structure</li> <li>▲ Campground</li> <li>■ Community</li> <li>● Bridge</li> <li>● Dip Site</li> <li>● Drop Point</li> <li>● Dozer Push</li> <li>● Hazard</li> <li>● Value at Risk</li> <li>● Internet Access</li> <li>● Landing or Log Deck</li> <li>● Mobile Weather Unit</li> </ul> | <ul style="list-style-type: none"> <li>● Retainer</li> <li>● Retardant in Avoidance Area</li> <li>● Retardant/Mud Pit</li> <li>● Road Repair</li> <li>● Safety Zone</li> <li>● Staging Area</li> <li>● Stream Crossing</li> <li>● Water Source</li> <li>● Restricted Water Source</li> <li>● Zone Break</li> <li>● Division Break</li> <li>● Branch Break</li> </ul> | <ul style="list-style-type: none"> <li>■ Uncontrolled Fire Edge</li> <li>■ Contained Line</li> <li>■ Completed Dozer Line</li> <li>■ Retardant Hand Line</li> <li>■ Road as Completed Line</li> <li>■ Access or Improved Road</li> <li>■ Proposed Dozer Line</li> <li>■ Aerial Retardant Drop</li> <li>■ Fence</li> <li>■ Zone Break Line</li> <li>■ State Highways</li> <li>■ PGE Transmission Line</li> <li>■ PGE Distribution Line</li> <li>■ Highlighted Travel Routes</li> <li>■ Fire History</li> <li>■ CA Department of Forestry and Fire Protection</li> </ul> | <ul style="list-style-type: none"> <li>■ US Forest Service Wilderness Area</li> <li>■ Bureau of Land Management</li> <li>■ SPL Land Ownership</li> <li>■ Local Government</li> <li>■ Non-Profit Conservancies and Trusts</li> <li>■ CA Dept. of Forestry and Fire Protection</li> <li>■ CA Dept. of Parks and Recreation</li> <li>■ CA Dept. of Fish and Wildlife</li> <li>■ Other State Lands</li> <li>■ National Park Service</li> <li>■ USDA Forest Service</li> <li>■ Bureau of Reclamation</li> <li>■ Bureau of Land Management</li> <li>■ US Fish and Wildlife Service</li> <li>■ Bureau of Indian Affairs</li> <li>■ Department of Defense</li> <li>■ Other Federal Lands</li> </ul> |
|--|--|--|---|

**OPS Branch Breakout Map**  
Branch 31

Datum: NAD83