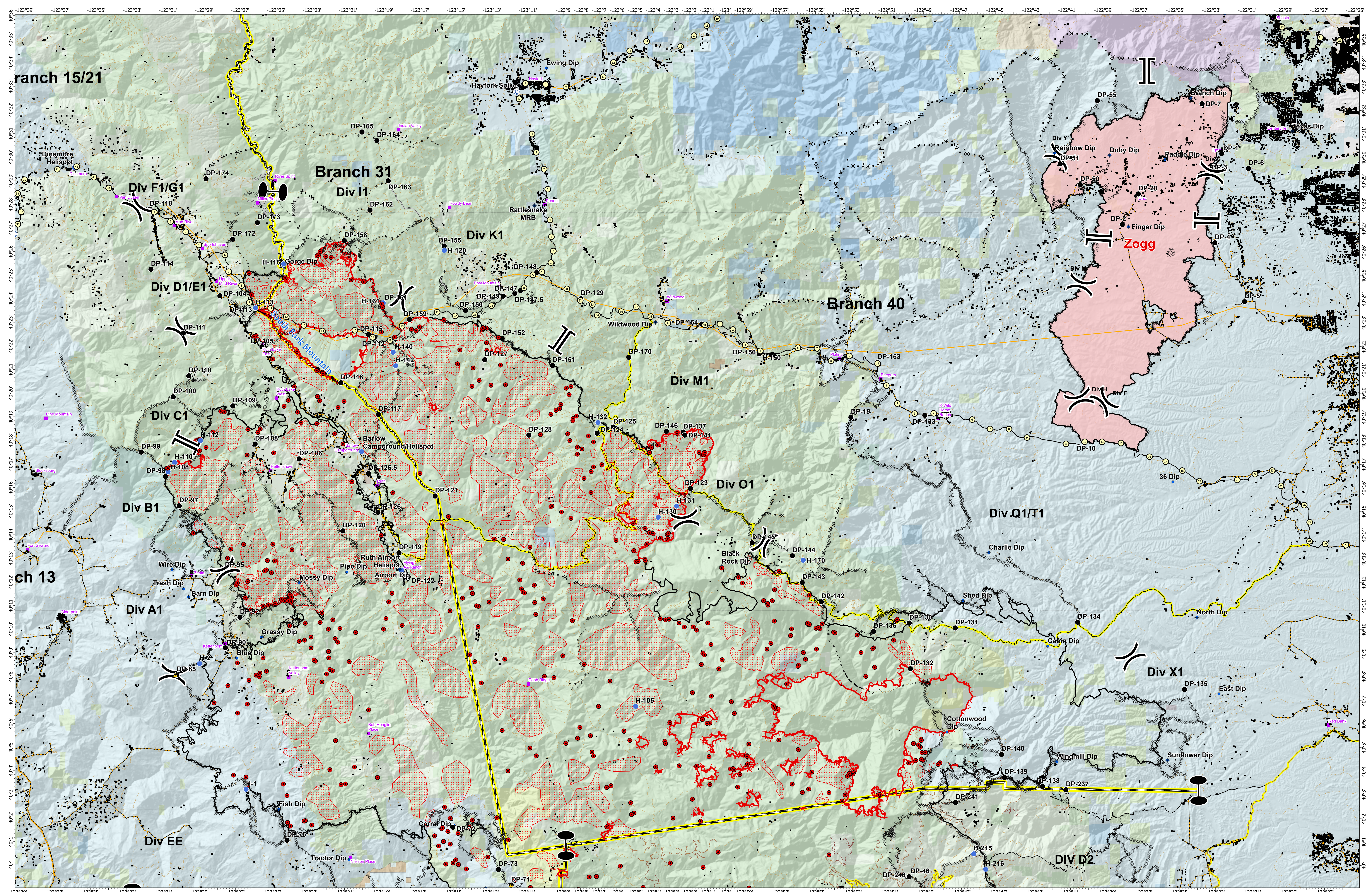


Operations Overview IR

August Complex Northeast Zone CA-MNF-000753

October 17, 2020

- Intense Heat
- Scattered Heat
- Isolated Heat Sources
- Structures
- Camp
- Dip Site
- Drop Point
- Helispot
- Safety Zone
- Zone Break
- Division Break
- Branch Break
- Uncontrolled Fire Edge
- Contained Line
- Completed Dozer Line
- Completed Hand Line
- Road as Completed Line
- Access or Improved Road
- Proposed Dozer Line
- Planned Fire Line
- August Complex North/South/West Zone Break Line
- PGE Transmission Line
- PGE Distribution Line
- County
- Other
- State
- Primary Travel Route
- Tribal Trust Lands
- Local Government
- Non-Profit Conservancies and Trusts
- CA Dept. of Forestry and Fire Protection
- CA Dept. of Parks and Recreation
- CA Dept. of Fish and Wildlife
- Other State Lands
- National Park Service
- USDA Forest Service
- Bureau of Reclamation
- Bureau of Land Management
- US Fish and Wildlife Service
- Bureau of Indian Affairs
- Department of Defense
- Other Federal Lands



40° 40' 39" N
123° 39' 00" W
40° 40' 38" N
123° 38' 00" W
40° 40' 37" N
123° 37' 00" W
40° 40' 36" N
123° 36' 00" W
40° 40' 35" N
123° 35' 00" W
40° 40' 34" N
123° 34' 00" W
40° 40' 33" N
123° 33' 00" W
40° 40' 32" N
123° 32' 00" W
40° 40' 31" N
123° 31' 00" W
40° 40' 30" N
123° 30' 00" W
40° 40' 29" N
123° 29' 00" W
40° 40' 28" N
123° 28' 00" W
40° 40' 27" N
123° 27' 00" W
40° 40' 26" N
123° 26' 00" W
40° 40' 25" N
123° 25' 00" W
40° 40' 24" N
123° 24' 00" W
40° 40' 23" N
123° 23' 00" W
40° 40' 22" N
123° 22' 00" W
40° 40' 21" N
123° 21' 00" W
40° 40' 20" N
123° 20' 00" W
40° 40' 19" N
123° 19' 00" W
40° 40' 18" N
123° 18' 00" W
40° 40' 17" N
123° 17' 00" W
40° 40' 16" N
123° 16' 00" W
40° 40' 15" N
123° 15' 00" W
40° 40' 14" N
123° 14' 00" W
40° 40' 13" N
123° 13' 00" W
40° 40' 12" N
123° 12' 00" W
40° 40' 11" N
123° 11' 00" W
40° 40' 10" N
123° 10' 00" W
40° 40' 9" N
123° 9' 00" W
40° 40' 8" N
123° 8' 00" W
40° 40' 7" N
123° 7' 00" W
40° 40' 6" N
123° 6' 00" W
40° 40' 5" N
123° 5' 00" W
40° 40' 4" N
123° 4' 00" W
40° 40' 3" N
123° 3' 00" W
40° 40' 2" N
123° 2' 00" W
40° 40' 1" N
123° 1' 00" W
40° 40' 0" N
123° 0' 00" W

122° 39' 00" W
122° 38' 00" W
122° 37' 00" W
122° 36' 00" W
122° 35' 00" W
122° 34' 00" W
122° 33' 00" W
122° 32' 00" W
122° 31' 00" W
122° 30' 00" W
122° 29' 00" W
122° 28' 00" W
122° 27' 00" W
122° 26' 00" W
122° 25' 00" W
122° 24' 00" W
122° 23' 00" W
122° 22' 00" W
122° 21' 00" W
122° 20' 00" W
122° 19' 00" W
122° 18' 00" W
122° 17' 00" W
122° 16' 00" W
122° 15' 00" W
122° 14' 00" W
122° 13' 00" W
122° 12' 00" W
122° 11' 00" W
122° 10' 00" W
122° 9' 00" W
122° 8' 00" W
122° 7' 00" W
122° 6' 00" W
122° 5' 00" W
122° 4' 00" W
122° 3' 00" W
122° 2' 00" W
122° 1' 00" W
122° 0' 00" W