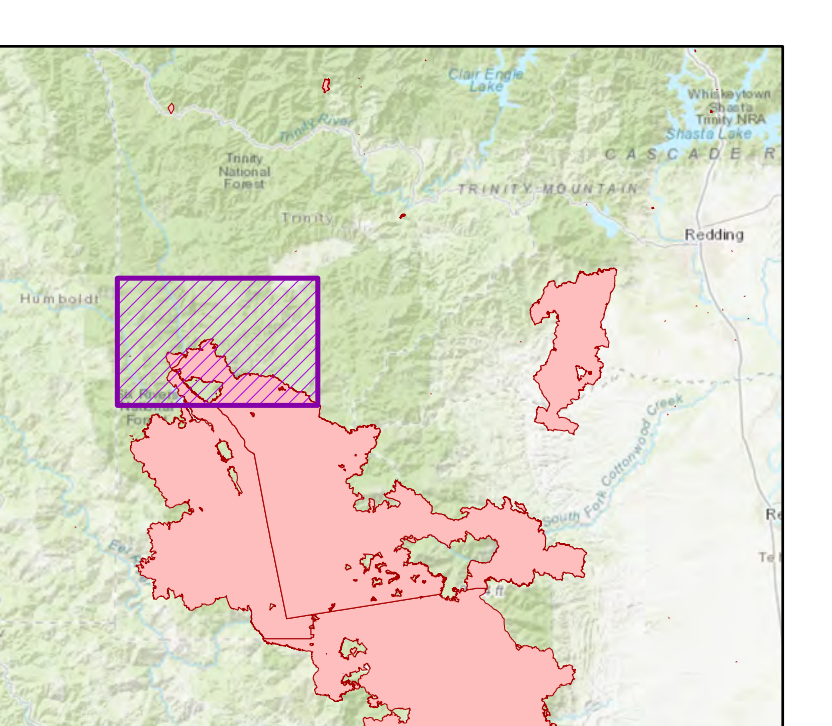
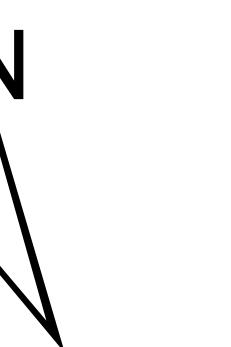


**OPS Div I1/K1
Breakout Map**



Datum: NAD83
0 1 2 Mile



OPS Division Breakout
Div I1/K1
August Complex Northeast Zone
CA-MNF-000753
October 19, 2020

- Milepost
- Structures
- Campground
- Community
- ✕ Closure
- ◆ Dip Site
- Drop Point
- ➔ Dozer Push
- ⊘ Gate
- ⚠ Hazard
- 🌲 Hazard Tree
- ⚓ Helispot
- 📶 Internet Access
- 🚢 Landing or Log Deck
- 🌤 Mobile Weather Unit
- 🔧 Repair Point
- 📡 Repeater
- 🚒 Retardant/Mud Pit
- 🛣 Road Repair
- ⚠ Safety Zone
- 🌊 Stream Crossing
- 💧 Water Source
- 🚫 Restricted Water Source
- ⚠ Value at Risk
- ⚡ Zone Break
- ⚡ Division Break
- ⚡ Branch Break
- 🔥 Uncontrolled Fire Edge
- Contained Line
- Completed Dozer Line
- Completed Hand Line
- Road as Completed Line
- Access or Improved Road
- Proposed Dozer Line
- ✖ Aerial Retardant Drop
- Repair Line
- State Highways
- PGE Transmission Line
- PGE Distribution Line
- Highlighted Travel Routes
- Zone Break Line
- Wildfire Daily Fire Perimeter
- Fire History
- CA Department of Forestry and Fire Protection
- Bureau of Land Management
- SPI Land Ownership
- Local Government
- Non-Profit Conservancies and Trusts
- CA Dept. of Forestry and Fire Protection
- CA Dept. of Parks and Recreation
- CA Dept. of Fish and Wildlife
- Other State Lands
- National Park Service
- USDA Forest Service
- Bureau of Reclamation
- Bureau of Land Management
- US Fish and Wildlife Service
- Bureau of Indian Affairs
- Department of Defense
- Other Federal Lands
- LabelLine

**OPS Div I1/K1
Breakout Map**