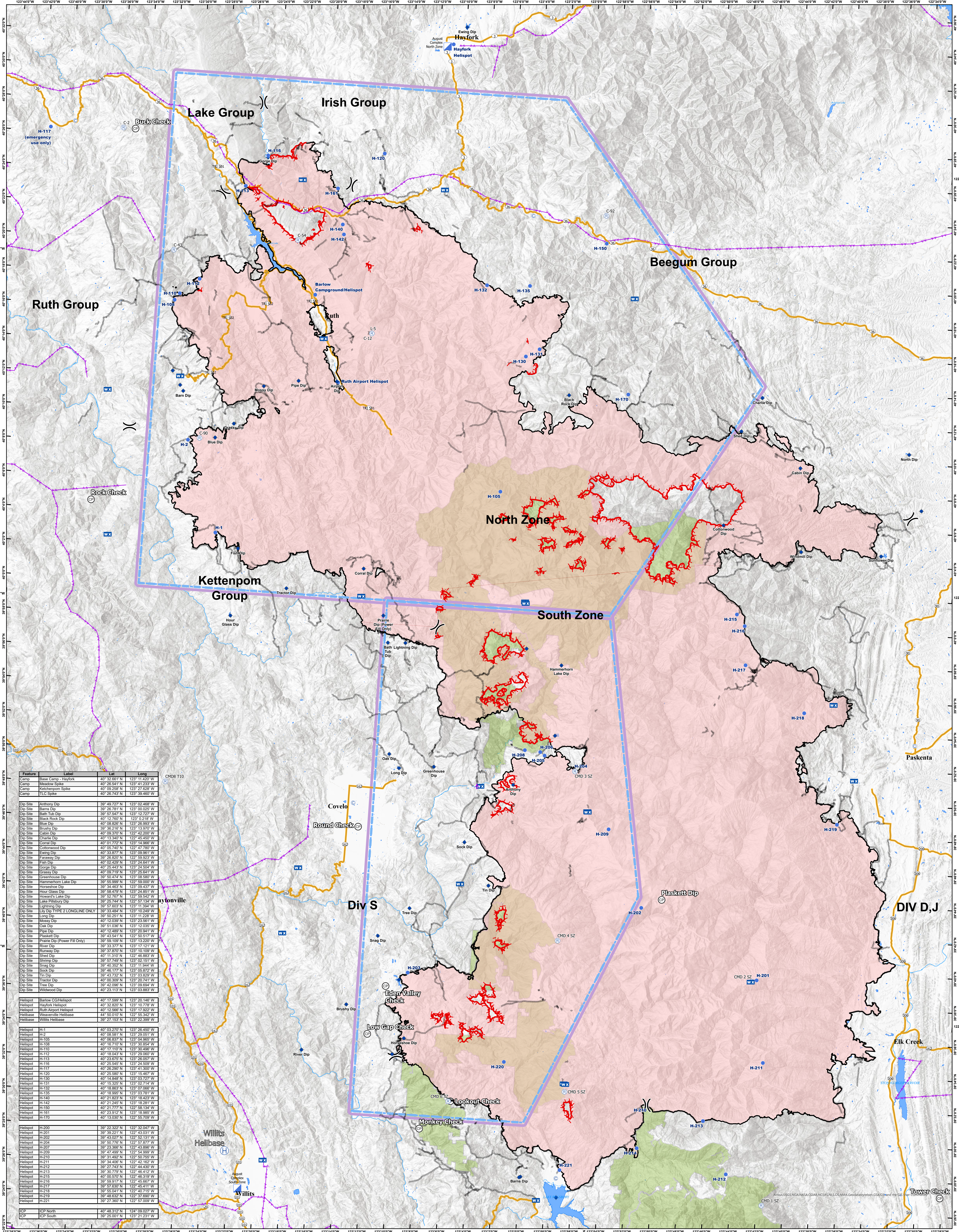


11/5/2020
CA-MNF-000753



Feature	Label	Lat	Long
Camp	Base Camp - Hayfork	40° 32.661' N	123° 11.420' W
Camp	Meadow Spike	40° 35.541' N	123° 12.231' W
Camp	Kettenpom Spike	40° 39.258' N	123° 27.628' W
Camp	TLC Spike	40° 26.743' N	123° 28.490' W
Dip Site	Anthony Dip	39° 49.727' N	123° 02.468' W
Dip Site	Barns Dip	39° 37.781' N	123° 03.025' W
Dip Site	Bath Tub Dip	39° 57.547' N	123° 12.727' W
Dip Site	Black Rock Dip	40° 12.760' N	123° 0.218' W
Dip Site	Blue Dip	40° 38.820' N	123° 28.866' W
Dip Site	Brushy Dip	39° 36.216' N	123° 13.970' W
Dip Site	Cabin Dip	40° 09.370' N	122° 42.200' W
Dip Site	Cherry Dip	40° 13.340' N	122° 45.450' W
Dip Site	Cornal Dip	40° 01.772' N	123° 14.968' W
Dip Site	Cottonwood Dip	40° 03.701' N	123° 07.730' W
Dip Site	Ewing Dip	40° 33.877' N	123° 09.901' W
Dip Site	Faraway Dip	39° 36.820' N	122° 59.923' W
Dip Site	Fresh Dip	40° 02.420' N	123° 04.611' W
Dip Site	Gorge Dip	40° 25.443' N	123° 24.504' W
Dip Site	Grassy Dip	40° 09.710' N	122° 25.641' W
Dip Site	Greenhouse Dip	39° 52.474' N	123° 25.560' W
Dip Site	Hammerhorn Lake Dip	39° 55.969' N	122° 59.000' W
Dip Site	Hausman Dip	39° 58.461' N	123° 04.431' W
Dip Site	Hour Glass Dip	39° 58.470' N	123° 24.851' W
Dip Site	Howard's Lake Dip	39° 52.767' N	122° 59.542' W
Dip Site	Lake Willabise Dip	39° 58.747' N	122° 57.835' W
Dip Site	Lightning Dip	39° 57.603' N	123° 11.384' W
Dip Site	Liv Dip TYPE 2 LONGLINE ONLY	39° 35.484' N	123° 10.249' W
Dip Site	Long Dip	40° 02.921' N	123° 12.222' W
Dip Site	Money Dip	40° 12.038' N	123° 23.561' W
Dip Site	Oak Dip	40° 01.038' N	123° 12.033' W
Dip Site	Pipe Dip	40° 12.489' N	123° 20.941' W
Dip Site	Plaskett Dip	39° 43.541' N	122° 50.517' W
Dip Site	Pratt Dip (Power Hill Only)	39° 59.781' N	123° 13.222' W
Dip Site	River Dip	39° 33.377' N	123° 11.121' W
Dip Site	Runway Dip	39° 31.870' N	123° 16.109' W
Dip Site	Shed Dip	40° 11.317' N	122° 56.865' W
Dip Site	Shrimp Dip	39° 57.748' N	123° 02.151' W
Dip Site	Shug Dip	39° 40.382' N	123° 11.944' W
Dip Site	Rock Dip	39° 46.777' N	123° 05.872' W
Dip Site	Tin Dip	39° 43.732' N	123° 03.829' W
Dip Site	Tractor Dip	40° 02.380' N	123° 20.411' W
Dip Site	Tree Dip	39° 42.096' N	123° 09.694' W
Dip Site	Wildwood Dip	40° 23.113' N	123° 03.883' W
Helispot	Barlow C&H Helispot	40° 17.559' N	123° 20.148' W
Helispot	Hayfork Helispot	40° 32.661' N	123° 11.420' W
Helispot	Ruth Airport Helispot	40° 12.560' N	123° 17.778' W
Helibase	Weaver's Helibase	44° 50.010' N	123° 55.342' W
Helibase	Willis Helibase	39° 27.153' N	123° 22.399' W
Helispot	H-1	40° 03.270' N	123° 26.450' W
Helispot	H-2	40° 08.817' N	123° 20.051' W
Helispot	H-105	40° 08.837' N	123° 04.955' W
Helispot	H-108	40° 16.710' N	123° 30.856' W
Helispot	H-110	40° 11.170' N	123° 06.466' W
Helispot	H-112	40° 18.043' N	123° 29.060' W
Helispot	H-113	40° 23.876' N	123° 28.007' W
Helispot	H-116	40° 25.540' N	123° 24.520' W
Helispot	H-117	40° 28.290' N	123° 41.300' W
Helispot	H-120	40° 01.580' N	123° 12.460' W
Helispot	H-130	40° 14.848' N	123° 03.727' W
Helispot	H-131	40° 15.325' N	123° 07.714' W
Helispot	H-132	40° 18.893' N	123° 07.020' W
Helispot	H-135	40° 18.995' N	123° 03.781' W
Helispot	H-140	40° 21.823' N	123° 16.423' W
Helispot	H-142	40° 21.420' N	123° 16.778' W
Helispot	H-150	40° 21.777' N	122° 58.134' W
Helispot	H-161	40° 23.571' N	123° 18.986' W
Helispot	H-170	40° 13.030' N	122° 56.709' W
Helispot	H-200	39° 32.321' N	122° 33.041' W
Helispot	H-201	39° 39.221' N	122° 43.031' W
Helispot	H-202	39° 43.027' N	122° 52.131' W
Helispot	H-204	39° 51.970' N	122° 52.722' W
Helispot	H-207	39° 23.366' N	122° 43.896' W
Helispot	H-209	39° 47.489' N	122° 54.999' W
Helispot	H-210	39° 51.467' N	122° 57.520' W
Helispot	H-211	39° 34.406' N	122° 42.162' W
Helispot	H-212	39° 27.743' N	122° 44.423' W
Helispot	H-213	39° 30.770' N	122° 46.412' W
Helispot	H-215	40° 05.570' N	122° 46.319' W
Helispot	H-216	39° 59.174' N	122° 53.951' W
Helispot	H-217	39° 57.630' N	122° 45.411' W
Helispot	H-218	39° 55.041' N	122° 40.713' W
Helispot	H-219	39° 55.620' N	122° 57.690' W
Helispot	H-221	39° 27.360' N	122° 57.009' W
NCP	ICP North	40° 48.312' N	124° 08.027' W
NCP	ICP South	39° 25.001' N	123° 21.231' W

Map legend and scale bar. Includes symbols for various features like Helibase, Airstrip, Hazard, and Checkpoints. Scale bar shows 0 to 12 miles.

Aviation Checkpoints

- SymbolID
- Checkpoint
- Water Dip

Event Point

- Aerial Hazard
- Safety Zone
- Temporary Refuge Area
- Repair Point

Other Symbols

- Fence - Cut/Damaged
- Landing or Log Deck
- Hazard Tree
- Retardant in Avoidance Area
- Culvert
- Road Repair
- Structure Wrap
- Hazard
- Clean Up Area
- Stream Crossing
- Dozer Push
- Water Development or Draft Site
- Aerial Ignition
- Airstrip or Airport
- Closure
- Dip Site
- Drop Point
- Fire Origin
- Fire Station
- First Aid Station
- Gate
- Helibase
- Unimproved Landing Area
- Helispot
- Incident Base
- Incident Command Post
- Internet Access
- Lookout
- Mobile Weather Unit
- Repeater
- Retardant/Mud Pit
- Sling Site
- Spot Fire
- Staging Area
- Water Source
- Restricted Water Source
- Value at Risk
- Branch Break
- Division Break
- Cal Fire Branch Break
- Cal Fire Division Break
- Segment Break
- Zone Break
- Checkpoints
- SymbolID
- Checkpoint
- Aviation Obstacle
- TFR North
- TFR South

Datum: North American 1983, UTM Zone 10

