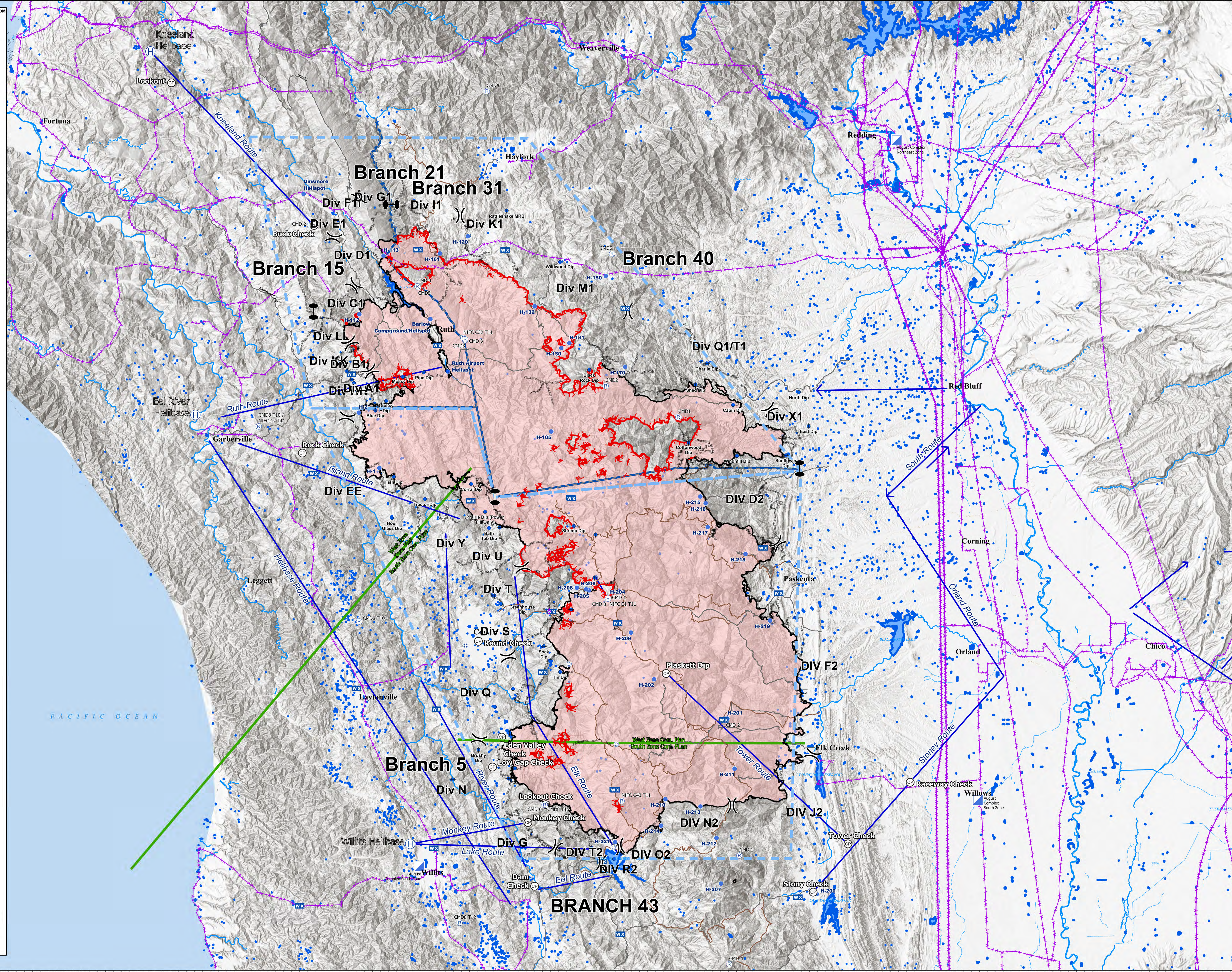
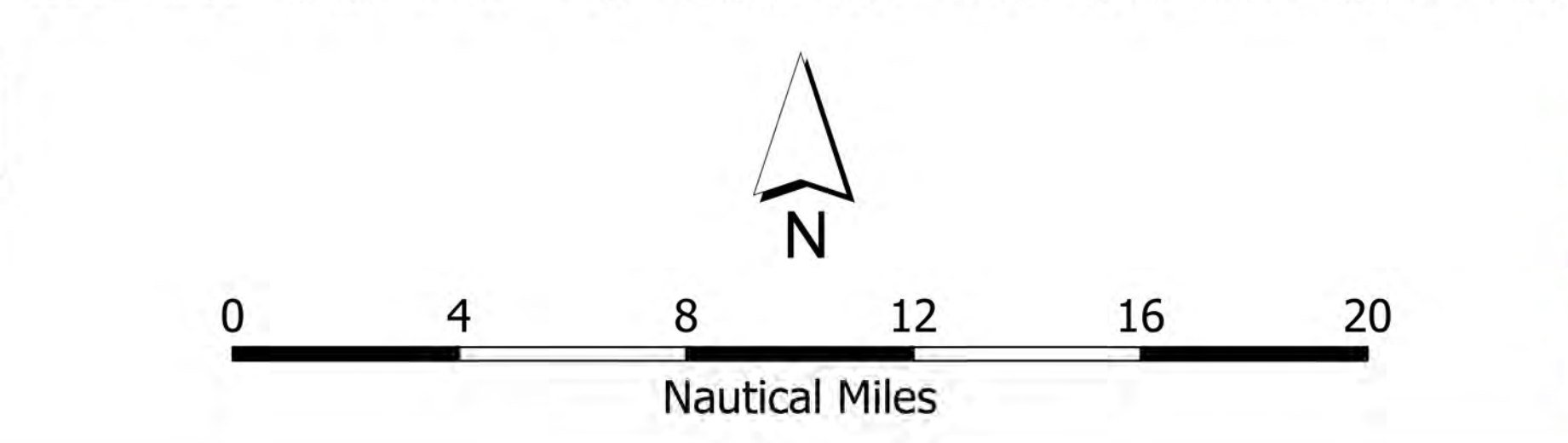


FeatureCategory	Label	LatWGS84_DDM	LongWGS84_DDM
Camp	Camp	39° 36.777' N	122° 56.851' W
Camp	Base Camp - Stony Ford	39° 22.668' N	122° 33.809' W
Camp	Eel River Camp	39° 46.250' N	123° 49.416' W
Camp	Gravelly Spike	39° 26.861' N	122° 57.246' W
Camp	Hayfork Spike	40° 32.875' N	123° 11.608' W
Camp	Meadows Spike	40° 26.541' N	122° 41.237' W
Camp	Powdering Spike	39° 53.522' N	122° 32.165' W
Camp	Ridge/Pitman Spike Camp	39° 44.485' N	122° 02.708' W
Camp	TLC Spike	40° 26.743' N	123° 39.460' W
Dip Site	Airport Dip	40° 12.613' N	123° 18.016' W
Dip Site	Anthony Dip	39° 49.728' N	122° 02.468' W
Dip Site	Bath Dip	39° 11.311' N	123° 26.971' W
Dip Site	Barns Dip	39° 26.781' N	123° 03.024' W
Dip Site	Bath Tub Dip	39° 57.547' N	123° 12.727' W
Dip Site	Black Rock Dip	40° 12.760' N	123° 02.218' W
Dip Site	Blue Dip	40° 8.827' N	122° 26.992' W
Dip Site	Brooding Dip	39° 36.217' N	123° 13.969' W
Dip Site	Cabin Dip	40° 09.370' N	122° 42.200' W
Dip Site	Charlie Dip	40° 13.340' N	122° 45.450' W
Dip Site	Corral Dip	40° 1.772' N	123° 14.965' W
Dip Site	Cottonwood Dip	40° 05.740' N	122° 47.780' W
Dip Site	East Dip	40° 02.310' N	122° 32.760' W
Dip Site	Farway Dip	39° 26.800' N	122° 58.923' W
Dip Site	Fish Dip	40° 2.430' N	123° 24.640' W
Dip Site	Grassy Dip	40° 9.720' N	123° 25.640' W
Dip Site	Greenhouse Dip	39° 50.475' N	122° 8.579' W
Dip Site	Hammerhead Lake Dip	39° 56.005' N	122° 55.005' W
Dip Site	Horsehead Dip	39° 34.464' N	123° 9.436' W
Dip Site	Hour Glass Dip	39° 58.480' N	123° 24.850' W
Dip Site	Howard's Lake Dip	39° 52.768' N	122° 59.543' W
Dip Site	Lake Pillsbury Dip	39° 25.744' N	122° 57.134' W
Dip Site	Lighting Dip	39° 57.694' N	123° 13.393' W
Dip Site	Lily Dip TYPE 2 LONGLINE ONLY	39° 33.484' N	123° 10.248' W
Dip Site	Long Dip	39° 50.251' N	123° 11.227' W
Dip Site	Mossy Dip	40° 12.040' N	123° 23.560' W
Dip Site	North Dip	40° 10.560' N	122° 33.960' W
Dip Site	Oak Dip	39° 02.310' N	122° 32.760' W
Dip Site	Pipe Dip	40° 12.400' N	123° 20.940' W
Dip Site	Plaskett Dip	39° 43.541' N	122° 50.517' W
Dip Site	Prairie Dip (Power Fill Only)	39° 59.110' N	123° 13.220' W
Dip Site	Rattlesnake MRB	40° 28.050' N	122° 10.600' W
Dip Site	River Dip	39° 33.278' N	123° 13.220' W
Dip Site	Runway Dip	39° 37.870' N	123° 10.100' W
Dip Site	Shed Dip	40° 11.310' N	122° 46.883' W
Dip Site	Shrimp Dip	39° 57.750' N	123° 02.151' W
Dip Site	Snag Dip	39° 40.352' N	122° 11.943' W
Dip Site	Sock Dip	39° 46.177' N	123° 03.971' W
Dip Site	Sunflower Dip	40° 04.510' N	122° 35.620' W
Dip Site	Tin Dip	39° 43.732' N	123° 3.828' W
Dip Site	Tractor Dip	40° 0.310' N	123° 20.740' W
Dip Site	Trash Dip	40° 11.750' N	122° 29.951' W
Dip Site	Wildwood Dip	39° 42.982' N	123° 9.693' W
Dip Site	Windmill Dip	40° 21.113' N	123° 03.883' W
Dip Site	Wire Dip	40° 12.567' N	123° 30.597' W
Helibase	Eel River Helibase	40° 8.252' N	122° 49.521' W
Helibase	Kneeland Helibase	39° 36.217' N	123° 13.969' W
Helibase	Willits Helibase	39° 22.153' N	123° 22.399' W
Helispot	Barlow Campground/Helispot	40° 17.599' N	123° 20.146' W
Helispot	Dinsmore Helispot	40° 29.586' N	123° 36.149' W
Helispot	H-1	40° 3.270' N	122° 26.450' W
Helispot	H-105	40° 06.337' N	123° 04.363' W
Helispot	H-112	40° 18.043' N	123° 29.060' W
Helispot	H-113	40° 23.675' N	123° 26.057' W
Helispot	H-120	40° 25.58' N	123° 15.467' W
Helispot	H-130	40° 14.848' N	122° 03.727' W
Helispot	H-131	40° 15.225' N	123° 02.747' W
Helispot	H-132	40° 18.863' N	123° 07.066' W
Helispot	H-150	40° 21.777' N	122° 58.134' W
Helispot	H-161	40° 23.912' N	123° 18.985' W
Helispot	H-170	40° 13.030' N	122° 55.709' W
Helispot	H-2	40° 05.811' N	122° 30.551' W
Helispot	H-200	39° 22.322' N	122° 32.047' W
Helispot	H-201	39° 39.221' N	122° 43.031' W
Helispot	H-202	39° 43.027' N	122° 52.131' W
Helispot	H-204	39° 50.777' N	122° 57.878' W
Helispot	H-205	39° 51.565' N	123° 06.234' W
Helispot	H-206	39° 51.663' N	123° 00.611' W
Helispot	H-207	39° 23.366' N	122° 43.896' W
Helispot	H-208	39° 51.808' N	123° 01.759' W
Helispot	H-209	39° 47.499' N	122° 54.999' W
Helispot	H-210	39° 31.492' N	122° 46.750' W
Helispot	H-211	39° 34.406' N	122° 42.162' W
Helispot	H-212	39° 27.743' N	122° 44.430' W
Helispot	H-213	39° 30.779' N	122° 46.412' W
Helispot	H-214	39° 28.937' N	122° 51.291' W
Helispot	H-215	40° 05.971' N	122° 46.321' W
Helispot	H-216	39° 59.918' N	122° 45.668' W
Helispot	H-217	39° 57.631' N	122° 45.413' W
Helispot	H-218	39° 55.042' N	122° 40.716' W
Helispot	H-219	39° 48.632' N	122° 37.696' W
Helispot	H-221	39° 27.368' N	122° 51.099' W
Helispot	Ruth Airport Helispot	40° 12.566' N	123° 17.922' W
Incident Command Post	Incident Command Post	39° 31.261' N	122° 12.017' W
Incident Command Post	ICP South Zone	39° 34.746' N	122° 21.474' W
Mobile Weather Unit	Alder Point	39° 25.001' N	122° 21.231' W
Mobile Weather Unit	Alder Springs	39° 48.480' N	122° 56.702' W
Mobile Weather Unit	Eagle Peak	40° 11.181' N	123° 35.452' W
Mobile Weather Unit	Eel River	39° 39.097' N	122° 43.471' W
Mobile Weather Unit	IRAWS 13	39° 55.617' N	122° 38.517' W
Mobile Weather Unit	IRAWS 14	39° 49.517' N	122° 04.951' W
Mobile Weather Unit	IRAWS 23	39° 32.360' N	123° 51.009' W
Mobile Weather Unit	IRAWS 25	40° 0.399' N	123° 2.455' W
Mobile Weather Unit	IRAWS 27	40° 24.263' N	123° 21.734' W
Mobile Weather Unit	IRAWS 31	40° 24.263' N	123° 10.790' W
Mobile Weather Unit	IRAWS 47	40° 12.388' N	122° 55.199' W
Mobile Weather Unit	Island Mtn	40° 0.154' N	123° 14.999' W
Mobile Weather Unit	Laytonville	39° 43.212' N	123° 5.989' W
Mobile Weather Unit	McGuire's	40° 2.709' N	123° 34.632' W
Mobile Weather Unit	Manacoco Pass	39° 42.098' N	123° 29.143' W
Mobile Weather Unit	Monkey Rock	39° 21.159' N	122° 36.040' W
Mobile Weather Unit	Poonkinney West	39° 48.206' N	122° 56.526' W
Mobile Weather Unit	Portable	39° 32.419' N	122° 57.121' W
Mobile Weather Unit	Reynolds Highway	39° 44.007' N	123° 18.337' W
Mobile Weather Unit	Rodas Valley	39° 18.514' N	122° 56.386' W
Mobile Weather Unit	Ruth	39° 26.757' N	123° 19.467' W
Mobile Weather Unit	Soda Creek	39° 15.062' N	123° 19.258' W
Mobile Weather Unit	Soldier Ridge	39° 25.499' N	122° 58.633' W
Mobile Weather Unit	Stonyford	40° 00.467' N	123° 02.504' W
Mobile Weather Unit	Thomas Creek	39° 22.037' N	122° 34.377' W
Mobile Weather Unit	Zenia	39° 51.253' N	123° 36.599' W
Repeater	CMD 1	40° 12.274' N	123° 28.999' W
Repeater	CMD 1	39° 26.050' N	122° 41.596' W
Repeater	CMD 2	39° 50.772' N	122° 57.874' W
Repeater	CMD 2	39° 39.124' N	122° 43.404' W
Repeater	CMD 3	40° 05.544' N	122° 35.312' W
Repeater	CMD 3	39° 55.026' N	122° 40.241' W
Repeater	CMD 4	40° 15.670' N	123° 15.789' W
Repeater	CMD 4	39° 15.607' N	122° 42.908' W
Repeater	CMD 6	40° 20.745' N	123° 21.797' W
Repeater	CMD 6	39° 30.553' N	122° 08.746' W
Repeater	CMD 1	40° 08.216' N	122° 49.050' W
Repeater	CMD 2	40° 11.212' N	122° 58.174' W
Repeater	CMD 3	40° 15.600' N	122° 15.784' W
Repeater	CMD 4	40° 39.534' N	122° 13.151' W
Repeater	CMD 5	40° 20.607' N	122° 21.588' W
Repeater	CMD 6	40° 23.910' N	122° 57.350' W
Repeater	CMD 6 T10	39° 48.509' N	123° 28.871' W
Repeater	CMD 6 T10 / NIFC C2 T11	40° 7.194' N	123° 41.581' W
Repeater	CMD 6 T12	39° 19.596' N	122° 16.249' W
Repeater	CMD 6 T15	39° 30.556' N	122° 5.262' W
Repeater	NIFC C1 T11	40° 50.774' N	122° 57.880' W
Repeater	NIFC C3 T11	40° 15.800' N	123° 15.992' W
Repeater	NIFC C4 T11	39° 31.321' N	122° 56.203' W



Air Ops
August Complex
 CA-MNF-000753
 10/11/2020



- ✱ Aerial Hazard
- Ⓛ Landing or Log Deck
- ⚠ Hazard Tree
- Ⓜ Structure Wrap
- Ⓜ Water Development or Draft Site
- ⚠ Safety Zone
- Ⓛ Retardant in Avoidance Area
- ⚠ Hazard
- Ⓜ Clean Up Area
- Ⓜ Aerial Ignition
- Ⓜ Temporary Refuge Area
- Ⓛ Culvert
- Ⓜ Stream Crossing
- Ⓜ Airstrip or Airport
- Ⓜ Repair Point
- Ⓛ Road Repair
- Ⓜ Dozer Push
- Ⓜ Closure
- Ⓜ Fence - Cut/Damaged

brandonzimmerman
 10/14/2020 1015
 Acres from IR
 North American 1983