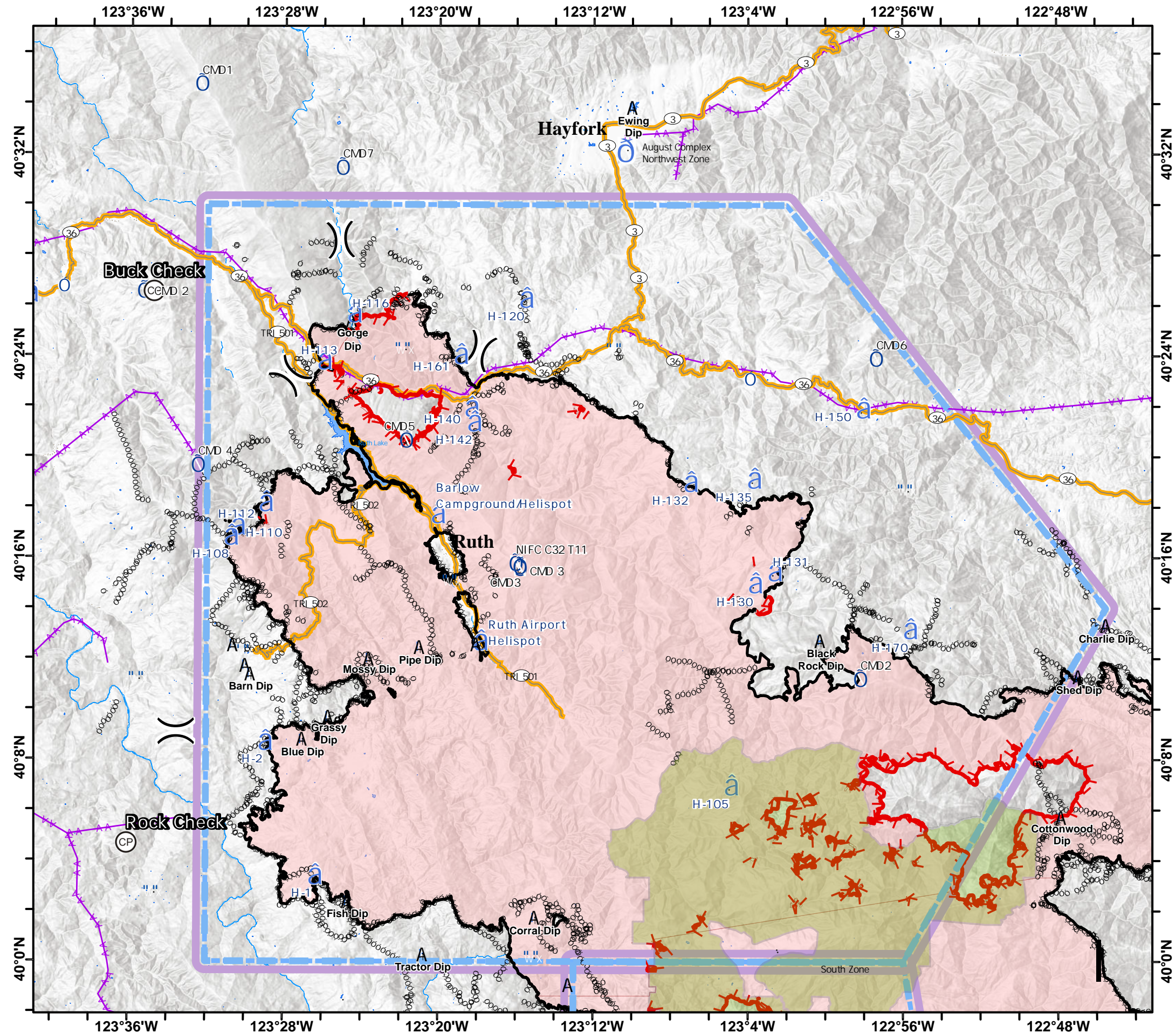


Feature	Label	Lat	Long
Camp	Base Camp - Hayfork	40° 32.661' N	123° 11.420' W
Camp	Meadow Spike	40° 26.541' N	123° 41.233' W
Camp	Ketchenpom Spike	40° 09.258' N	123° 27.628' W
Camp	TLC Spike	40° 26.743' N	123° 39.460' W
Camp	Wildwood Spike	40° 23.113' N	123° 03.883' W

Dip Site	Anthony Dip	39° 49.727' N	123° 02.468' W
Dip Site	Barns Dip	39° 26.781' N	123° 00.025' W
Dip Site	Bath Tub Dip	39° 57.547' N	123° 12.727' W
Dip Site	Blue Dip	40° 08.826' N	123° 26.993' W
Dip Site	Brushy Dip	39° 36.216' N	123° 13.970' W
Dip Site	Corral Dip	40° 01.772' N	123° 14.966' W
Dip Site	Faraway Dip	39° 26.820' N	122° 59.923' W
Dip Site	Fish Dip	40° 02.429' N	123° 24.641' W
Dip Site	Grassy Dip	40° 09.719' N	123° 25.641' W
Dip Site	Greenhouse Dip	39° 50.474' N	123° 08.580' W
Dip Site	Hammerhorn Lake Dip	39° 55.999' N	122° 59.000' W
Dip Site	Horseshoe Dip	39° 34.463' N	123° 09.437' W
Dip Site	Hour Glass Dip	39° 58.479' N	123° 24.851' W
Dip Site	Howard's Lake Dip	39° 52.767' N	122° 59.542' W
Dip Site	Lake Pillsbury Dip	39° 25.744' N	122° 57.134' W
Dip Site	Lightning Dip	39° 57.603' N	123° 11.394' W
Dip Site	Lily Dip TYPE 2 LONGLINE ONLY	39° 33.484' N	123° 10.249' W
Dip Site	Long Dip	39° 50.251' N	123° 11.228' W
Dip Site	Mossy Dip	40° 12.039' N	123° 23.561' W
Dip Site	Oak Dip	39° 51.036' N	123° 12.035' W
Dip Site	Pipe Dip	40° 12.489' N	123° 20.941' W
Dip Site	Plaskett Dip	39° 43.541' N	122° 50.517' W
Dip Site	Prairie Dip (Power Fill Only)	39° 59.109' N	123° 13.220' W
Dip Site	River Dip	39° 33.377' N	123° 17.121' W
Dip Site	Runway Dip	39° 37.870' N	123° 10.109' W
Dip Site	Shrimp Dip	39° 57.749' N	123° 02.151' W
Dip Site	Shrimp Dip	39° 57.749' N	123° 02.151' W
Dip Site	Snag Dip	39° 40.352' N	123° 11.944' W
Dip Site	Sock Dip	39° 46.177' N	123° 05.872' W
Dip Site	Tin Dip	39° 43.732' N	123° 03.829' W
Dip Site	Tractor Dip	40° 00.309' N	123° 20.741' W
Dip Site	Tree Dip	39° 42.096' N	123° 09.694' W

Helibase	Eel River	40° 08.252' N	123° 49.522' W
Helibase	Willits	39° 27.153' N	123° 22.399' W
Helispot	H-1	40° 03.269' N	123° 26.451' W
Helispot	H-200	39° 22.322' N	122° 32.047' W
Helispot	H-201	39° 39.221' N	122° 43.031' W
Helispot	H-202	39° 43.027' N	122° 52.131' W
Helispot	H-204	39° 50.776' N	122° 57.877' W
Helispot	H-207	39° 23.366' N	122° 43.896' W
Helispot	H-209	39° 47.499' N	122° 54.999' W
Helispot	H-210	39° 31.492' N	122° 50.755' W
Helispot	H-211	39° 34.406' N	122° 42.162' W
Helispot	H-212	39° 27.743' N	122° 44.430' W
Helispot	H-213	39° 30.779' N	122° 46.412' W
Helispot	H-215	40° 00.570' N	122° 46.319' W
Helispot	H-216	39° 59.917' N	122° 45.667' W
Helispot	H-217	39° 57.630' N	122° 45.411' W
Helispot	H-218	39° 55.041' N	122° 40.715' W
Helispot	H-219	39° 48.632' N	122° 37.690' W
Helispot	H-221	39° 27.360' N	122° 57.009' W



Pilot Map
AUGUST COMPLEX
CA-MNF-000753
11/3/2020

- A Dip Site
- a Helispot
- o Incident Command Post
- o Repeater
- o Camp
- "" Mobile Weather Unit
- o Division Break
- TFR North
- WildernessMNF
- Roads
- Label_Point

