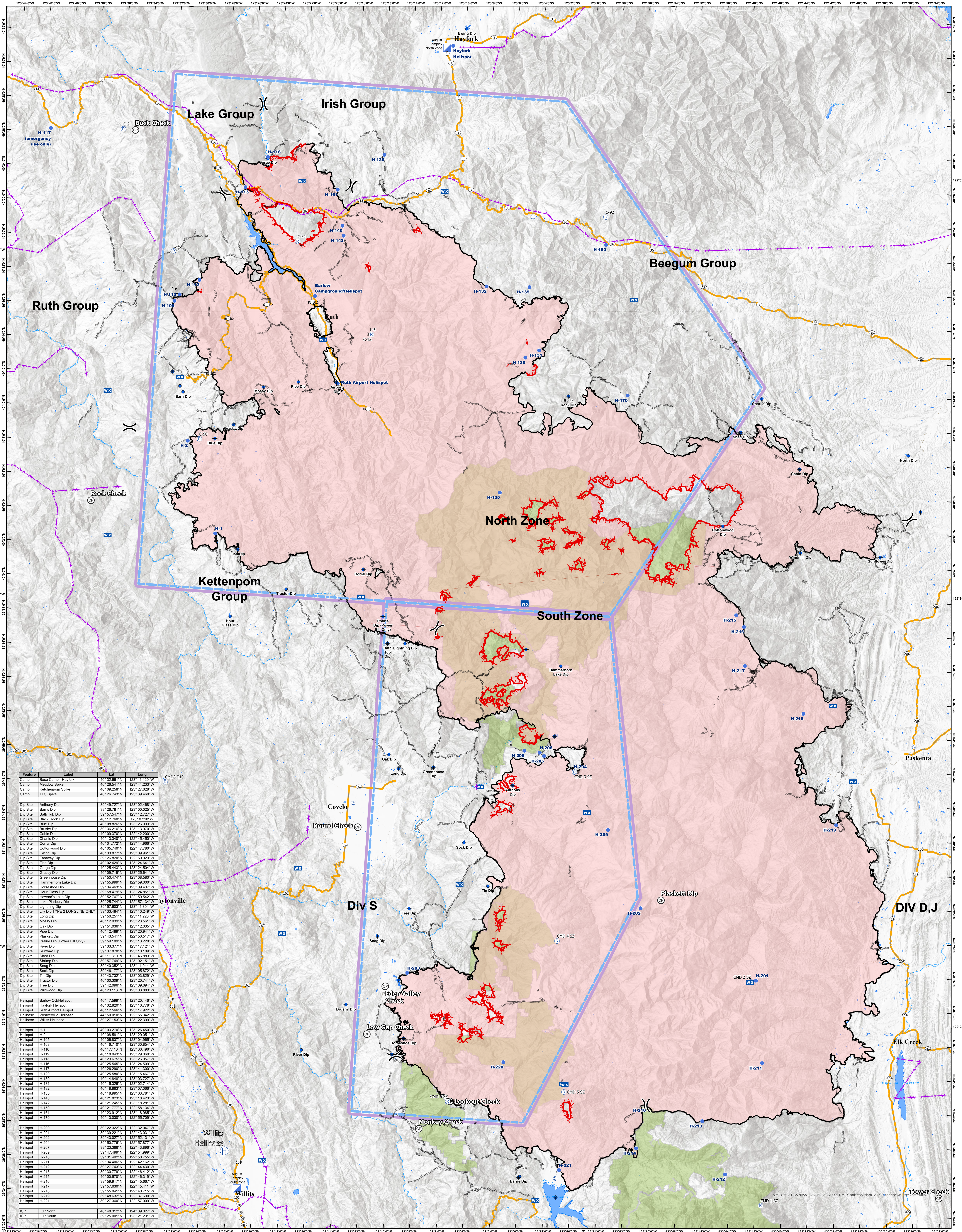


11/6/2020
CA-MNF-000753



| Feature | Label | Lat | Long |
|----------|------------------------------|---------------|----------------|
| Camp | Base Camp - Hayfork | 40° 32.661' N | 123° 11.420' W |
| Camp | Meadow Spike | 40° 35.541' N | 123° 12.233' W |
| Camp | Ketchenpom Spike | 40° 39.258' N | 123° 27.628' W |
| Camp | TLC Spike | 40° 26.743' N | 123° 28.490' W |
| Dip Site | Anthony Dip | 39° 49.727' N | 123° 02.468' W |
| Dip Site | Barns Dip | 39° 37.781' N | 123° 03.025' W |
| Dip Site | Bath Tub Dip | 39° 57.547' N | 123° 12.727' W |
| Dip Site | Black Rock Dip | 40° 12.760' N | 123° 0.218' W |
| Dip Site | Blue Dip | 40° 38.820' N | 123° 28.866' W |
| Dip Site | Bushy Dip | 39° 36.216' N | 123° 13.970' W |
| Dip Site | Cabin Dip | 40° 09.370' N | 122° 42.200' W |
| Dip Site | Cherry Dip | 40° 13.340' N | 122° 45.450' W |
| Dip Site | Cornal Dip | 40° 01.772' N | 123° 14.968' W |
| Dip Site | Cottonwood Dip | 40° 03.740' N | 123° 07.730' W |
| Dip Site | Ewing Dip | 40° 33.877' N | 123° 09.901' W |
| Dip Site | Faraway Dip | 39° 36.850' N | 122° 59.923' W |
| Dip Site | Fresh Dip | 40° 02.420' N | 123° 04.614' W |
| Dip Site | Gorge Dip | 40° 25.443' N | 123° 24.504' W |
| Dip Site | Grassy Dip | 40° 09.710' N | 122° 25.641' W |
| Dip Site | Greenhouse Dip | 39° 52.474' N | 123° 25.560' W |
| Dip Site | Hammerhorn Lake Dip | 39° 55.969' N | 122° 59.000' W |
| Dip Site | Hausman Dip | 39° 58.468' N | 123° 04.431' W |
| Dip Site | Hour Glass Dip | 39° 58.470' N | 123° 24.851' W |
| Dip Site | Howards Lake Dip | 39° 52.767' N | 122° 59.542' W |
| Dip Site | Lake Willabus Dip | 39° 58.747' N | 122° 57.835' W |
| Dip Site | Lightning Dip | 39° 57.603' N | 123° 11.394' W |
| Dip Site | Liv Dip TYPE 2 LONGLINE ONLY | 39° 35.468' N | 123° 10.249' W |
| Dip Site | Long Dip | 40° 02.925' N | 123° 12.222' W |
| Dip Site | Money Dip | 40° 12.038' N | 123° 23.561' W |
| Dip Site | Oak Dip | 39° 51.038' N | 123° 12.033' W |
| Dip Site | Pipe Dip | 40° 12.489' N | 123° 20.941' W |
| Dip Site | Plaskett Dip | 39° 43.541' N | 122° 50.517' W |
| Dip Site | Pratt Dip (Power Hill Only) | 39° 59.787' N | 123° 13.222' W |
| Dip Site | River Dip | 39° 33.377' N | 123° 11.121' W |
| Dip Site | Runway Dip | 39° 31.870' N | 123° 16.109' W |
| Dip Site | Shed Dip | 40° 11.374' N | 122° 56.465' W |
| Dip Site | Shrimp Dip | 39° 57.748' N | 123° 02.151' W |
| Dip Site | Shag Dip | 39° 40.382' N | 123° 11.944' W |
| Dip Site | Rock Dip | 39° 46.777' N | 123° 04.872' W |
| Dip Site | Tin Dip | 39° 43.732' N | 123° 03.829' W |
| Dip Site | Tractor Dip | 40° 02.380' N | 123° 20.411' W |
| Dip Site | Tree Dip | 39° 42.096' N | 123° 09.694' W |
| Dip Site | Wildwood Dip | 40° 23.113' N | 123° 03.883' W |
| Helispot | Barlow C&H Helispot | 40° 17.559' N | 123° 20.148' W |
| Helispot | Hayfork Helispot | 40° 32.661' N | 123° 11.420' W |
| Helispot | Ruth Airport Helispot | 40° 12.560' N | 123° 10.778' W |
| Helibase | Weaverville Helibase | 44° 00.010' N | 122° 55.342' W |
| Helibase | Willis Helibase | 39° 27.153' N | 123° 22.399' W |
| Helispot | H-1 | 40° 03.270' N | 123° 26.450' W |
| Helispot | H-2 | 40° 08.817' N | 123° 20.050' W |
| Helispot | H-105 | 40° 08.837' N | 123° 04.955' W |
| Helispot | H-108 | 40° 16.710' N | 123° 30.854' W |
| Helispot | H-110 | 40° 11.170' N | 123° 06.466' W |
| Helispot | H-112 | 40° 18.043' N | 123° 29.060' W |
| Helispot | H-113 | 40° 23.876' N | 123° 26.007' W |
| Helispot | H-116 | 40° 25.540' N | 123° 24.520' W |
| Helispot | H-117 | 40° 28.290' N | 123° 41.300' W |
| Helispot | H-120 | 40° 31.580' N | 123° 12.460' W |
| Helispot | H-130 | 40° 14.848' N | 123° 03.727' W |
| Helispot | H-131 | 40° 15.325' N | 123° 02.714' W |
| Helispot | H-132 | 40° 18.893' N | 123° 07.020' W |
| Helispot | H-135 | 40° 18.995' N | 123° 03.781' W |
| Helispot | H-140 | 40° 21.823' N | 123° 16.423' W |
| Helispot | H-142 | 40° 21.820' N | 123° 16.423' W |
| Helispot | H-150 | 40° 21.777' N | 122° 58.134' W |
| Helispot | H-161 | 40° 23.974' N | 123° 18.988' W |
| Helispot | H-170 | 40° 13.030' N | 122° 56.709' W |
| Helispot | H-200 | 39° 32.321' N | 122° 33.041' W |
| Helispot | H-201 | 39° 39.221' N | 122° 43.031' W |
| Helispot | H-202 | 39° 43.027' N | 122° 52.131' W |
| Helispot | H-204 | 39° 43.970' N | 122° 52.722' W |
| Helispot | H-207 | 39° 23.366' N | 122° 43.896' W |
| Helispot | H-209 | 39° 47.489' N | 122° 54.999' W |
| Helispot | H-210 | 39° 51.474' N | 122° 50.520' W |
| Helispot | H-211 | 39° 34.406' N | 122° 42.162' W |
| Helispot | H-212 | 39° 27.743' N | 122° 44.423' W |
| Helispot | H-213 | 39° 30.770' N | 122° 46.412' W |
| Helispot | H-215 | 40° 05.570' N | 122° 46.319' W |
| Helispot | H-216 | 39° 59.174' N | 122° 50.951' W |
| Helispot | H-217 | 39° 57.630' N | 122° 45.411' W |
| Helispot | H-218 | 39° 55.041' N | 122° 40.713' W |
| Helispot | H-219 | 39° 55.624' N | 122° 57.690' W |
| Helispot | H-221 | 39° 27.360' N | 122° 57.009' W |
| ICP | ICP North | 40° 48.312' N | 124° 08.027' W |
| ICP | ICP South | 39° 25.001' N | 123° 21.231' W |

| Feature | Label | Lat | Long |
|----------|-------|---------------|----------------|
| Helispot | H-1 | 40° 03.270' N | 123° 26.450' W |
| Helispot | H-2 | 40° 08.817' N | 123° 20.050' W |
| Helispot | H-105 | 40° 08.837' N | 123° 04.955' W |
| Helispot | H-108 | 40° 16.710' N | 123° 30.854' W |
| Helispot | H-110 | 40° 11.170' N | 123° 06.466' W |
| Helispot | H-112 | 40° 18.043' N | 123° 29.060' W |
| Helispot | H-113 | 40° 23.876' N | 123° 26.007' W |
| Helispot | H-116 | 40° 25.540' N | 123° 24.520' W |
| Helispot | H-117 | 40° 28.290' N | 123° 41.300' W |
| Helispot | H-120 | 40° 31.580' N | 123° 12.460' W |
| Helispot | H-130 | 40° 14.848' N | 123° 03.727' W |
| Helispot | H-131 | 40° 15.325' N | 123° 02.714' W |
| Helispot | H-132 | 40° 18.893' N | 123° 07.020' W |
| Helispot | H-135 | 40° 18.995' N | 123° 03.781' W |
| Helispot | H-140 | 40° 21.823' N | 123° 16.423' W |
| Helispot | H-142 | 40° 21.820' N | 123° 16.423' W |
| Helispot | H-150 | 40° 21.777' N | 122° 58.134' W |
| Helispot | H-161 | 40° 23.974' N | 123° 18.988' W |
| Helispot | H-170 | 40° 13.030' N | 122° 56.709' W |
| Helispot | H-200 | 39° 32.321' N | 122° 33.041' W |
| Helispot | H-201 | 39° 39.221' N | 122° 43.031' W |
| Helispot | H-202 | 39° 43.027' N | 122° 52.131' W |
| Helispot | H-204 | 39° 43.970' N | 122° 52.722' W |
| Helispot | H-207 | 39° 23.366' N | 122° 43.896' W |
| Helispot | H-209 | 39° 47.489' N | 122° 54.999' W |
| Helispot | H-210 | 39° 51.474' N | 122° 50.520' W |
| Helispot | H-211 | 39° 34.406' N | 122° 42.162' W |
| Helispot | H-212 | 39° 27.743' N | 122° 44.423' W |
| Helispot | H-213 | 39° 30.770' N | 122° 46.412' W |
| Helispot | H-215 | 40° 05.570' N | 122° 46.319' W |
| Helispot | H-216 | 39° 59.174' N | 122° 50.951' W |
| Helispot | H-217 | 39° 57.630' N | 122° 45.411' W |
| Helispot | H-218 | 39° 55.041' N | 122° 40.713' W |
| Helispot | H-219 | 39° 55.624' N | 122° 57.690' W |
| Helispot | H-221 | 39° 27.360' N | 122° 57.009' W |

| Feature | Label | Lat | Long |
|---------|-----------|---------------|----------------|
| ICP | ICP North | 40° 48.312' N | 124° 08.027' W |
| ICP | ICP South | 39° 25.001' N | 123° 21.231' W |

Legend for symbols and features:

- Aviation Checkpoints: Checkpoint, Water Dip
- Event Point: Aerial Hazard, Safety Zone, Temporary Refuge Area, Repair Point
- Fence - Cut/Damaged, Landing or Log Deck, Hazard Tree, Retardant in Avoidance Area, Stream Crossing, Dozer Push, Water Development or Draft Site, Road Repair, Structure Wrap
- Hazard: Clean Up Area, Stream Crossing, Dozer Push, Water Development or Draft Site
- Airstrip or Airport: Closure, Dip Site, Drop Point, Fire Origin, Fire Station, First Aid Station, Gate, Helibase, Unimproved Landing Area, Helispot, Incident Base, Incident Command Post, Internet Access
- Water Source: Water Source, Restricted Water Source, Value at Risk, Forward Supply Base, Small Fire
- Branch Break, Division Break, Cal Fire Branch Break, Cal Fire Division Break, Segment Break, Zone Break
- Checkpoints SymbolID: Checkpoint, Aviation Obstacle, TFR North, TFR South

Datum: North American 1983, UTM Zone 10

