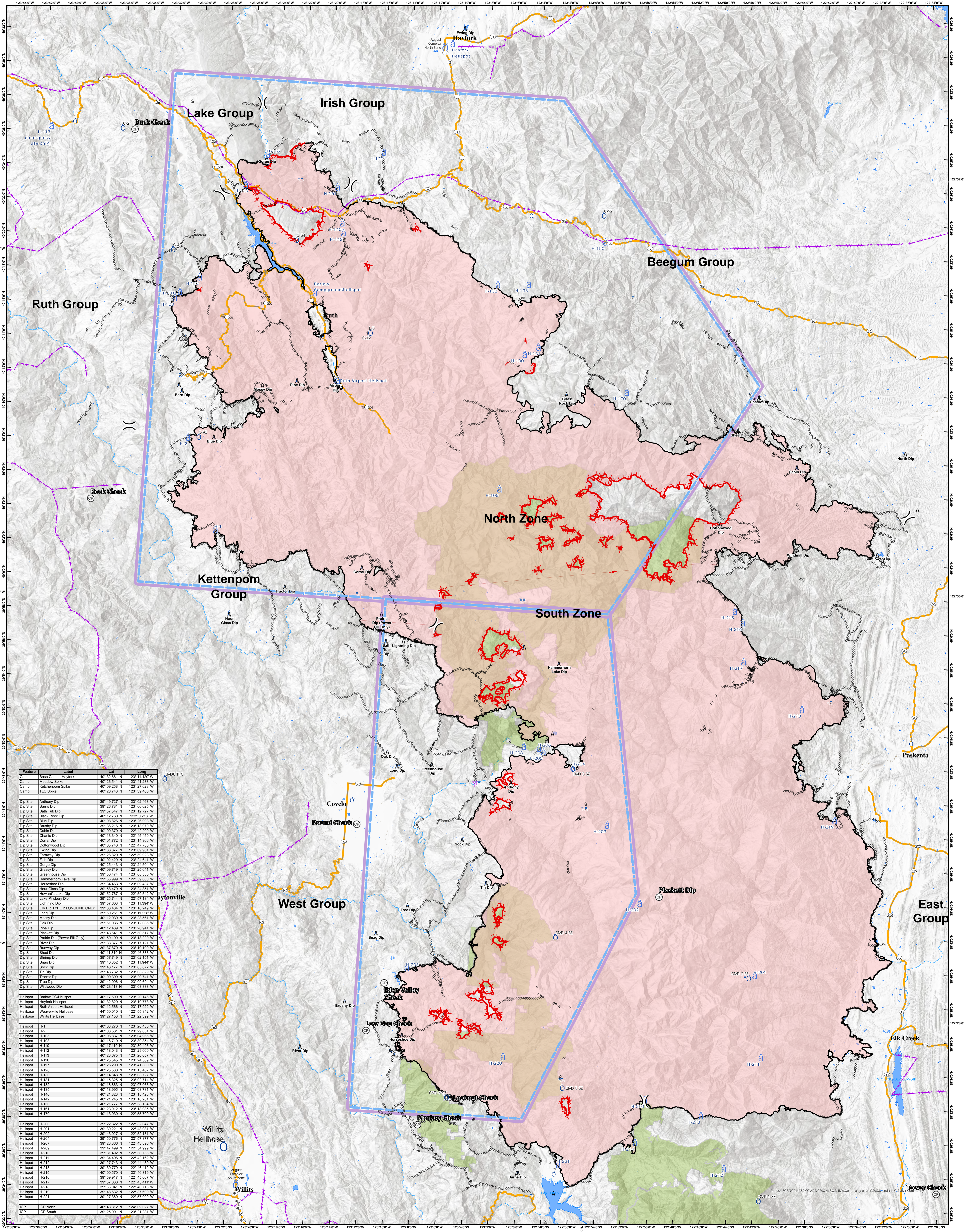


11/8/2020  
CA-MNF-000753



Feature	Label	Lat	Long
Camp	Basic Camp-Hayfork	40° 32.861' N	123° 11.823' W
Camp	Meadow Spike	40° 26.541' N	123° 41.233' W
Camp	Kettelpom Spike	40° 09.258' N	123° 27.628' W
Camp	H.C. Spike	40° 26.742' N	123° 36.660' W
Dip Site	Anthony Dip	39° 48.727' N	123° 02.468' W
Dip Site	Barn Dip	39° 25.317' N	123° 03.002' W
Dip Site	Bath Tub Dip	39° 57.547' N	123° 12.727' W
Dip Site	Black Rock Dip	40° 12.760' N	123° 02.618' W
Dip Site	Black Dip	40° 08.826' N	123° 25.929' W
Dip Site	Brushy Dip	39° 38.216' N	123° 13.970' W
Dip Site	Cabin Dip	40° 09.370' N	123° 42.200' W
Dip Site	Charlie Dip	40° 13.340' N	122° 45.450' W
Dip Site	Corral Dip	40° 01.772' N	123° 14.966' W
Dip Site	Cottonwood Dip	40° 05.740' N	122° 47.780' W
Dip Site	Ewing Dip	40° 33.877' N	123° 09.961' W
Dip Site	Fairway Dip	39° 26.820' N	122° 58.923' W
Dip Site	Fish Dip	40° 02.829' N	123° 24.841' W
Dip Site	Gorge Dip	40° 25.443' N	123° 24.504' W
Dip Site	Grassy Dip	40° 09.779' N	123° 25.541' W
Dip Site	Greenhouse Dip	39° 50.474' N	123° 08.580' W
Dip Site	Hammerhorn Lake Dip	39° 55.969' N	122° 59.000' W
Dip Site	Household Dip	39° 34.463' N	123° 09.817' W
Dip Site	Hour Glass Dip	39° 58.479' N	123° 24.851' W
Dip Site	Howard's Lake Dip	39° 52.767' N	122° 59.542' W
Dip Site	Lake Pillsbury Dip	39° 25.744' N	122° 57.134' W
Dip Site	Lighting Dip	39° 57.603' N	123° 11.394' W
Dip Site	Lay Dip TYPE 2 LONGLINE ONLY	39° 50.251' N	123° 11.228' W
Dip Site	Loopy Dip	39° 53.668' N	123° 10.249' W
Dip Site	Messy Dip	40° 12.038' N	123° 23.561' W
Dip Site	Oak Dip	39° 51.038' N	123° 12.035' W
Dip Site	Pipe Dip	40° 12.489' N	123° 20.341' W
Dip Site	Plasket Dip	39° 43.541' N	122° 50.517' W
Dip Site	Praine Dip (Power Fill Only)	39° 58.100' N	123° 13.220' W
Dip Site	River Dip	39° 33.377' N	123° 17.121' W
Dip Site	Runway Dip	39° 37.870' N	123° 10.109' W
Dip Site	Sand Dip	40° 11.310' N	122° 46.983' W
Dip Site	Shirley Dip	39° 57.749' N	123° 02.151' W
Dip Site	Shag Dip	39° 40.852' N	123° 11.344' W
Dip Site	Shoe Dip	39° 48.777' N	123° 05.872' W
Dip Site	Tin Dip	39° 43.732' N	123° 03.829' W
Dip Site	Tractor Dip	40° 03.969' N	123° 25.747' W
Dip Site	Tree Dip	39° 42.096' N	123° 09.934' W
Dip Site	Wildwood Dip	40° 23.113' N	123° 03.883' W
Helispot	Barlow C&H Helispot	40° 17.589' N	123° 20.146' W
Helispot	Hayfork Helispot	40° 32.620' N	123° 10.776' W
Helispot	Ruth Airport Helispot	40° 12.666' N	123° 17.922' W
Helibase	Waaverville Helibase	44° 50.010' N	122° 55.342' W
Helibase	Willits Helibase	39° 27.153' N	123° 22.399' W
Helispot	H-1	40° 03.270' N	123° 26.450' W
Helispot	H-105	40° 08.857' N	123° 29.651' W
Helispot	H-108	40° 06.837' N	123° 04.965' W
Helispot	H-110	40° 16.710' N	123° 30.554' W
Helispot	H-111	40° 17.910' N	123° 30.886' W
Helispot	H-112	40° 18.043' N	123° 29.060' W
Helispot	H-113	40° 23.676' N	123° 26.057' W
Helispot	H-116	40° 25.545' N	123° 24.209' W
Helispot	H-117	40° 26.280' N	123° 41.300' W
Helispot	H-120	40° 25.580' N	123° 15.487' W
Helispot	H-130	40° 14.848' N	123° 03.720' W
Helispot	H-131	40° 15.325' N	123° 02.714' W
Helispot	H-132	40° 18.865' N	123° 07.266' W
Helispot	H-135	40° 18.995' N	123° 03.781' W
Helispot	H-140	40° 21.823' N	123° 18.423' W
Helispot	H-142	40° 21.045' N	123° 18.281' W
Helispot	H-150	40° 21.777' N	122° 58.134' W
Helispot	H-161	40° 23.912' N	123° 18.985' W
Helispot	H-170	40° 13.020' N	122° 58.790' W
Helispot	H-200	39° 22.527' N	122° 32.047' W
Helispot	H-201	39° 39.221' N	122° 43.031' W
Helispot	H-202	39° 43.027' N	122° 52.131' W
Helispot	H-204	39° 50.776' N	122° 57.877' W
Helispot	H-207	39° 23.586' N	122° 43.896' W
Helispot	H-209	39° 47.489' N	122° 54.999' W
Helispot	H-210	39° 51.489' N	122° 50.759' W
Helispot	H-211	39° 34.406' N	122° 42.162' W
Helispot	H-212	39° 27.743' N	122° 44.420' W
Helispot	H-213	39° 30.778' N	122° 46.812' W
Helispot	H-215	40° 00.870' N	122° 46.319' W
Helispot	H-216	39° 59.817' N	122° 45.867' W
Helispot	H-217	39° 57.820' N	122° 45.411' W
Helispot	H-218	39° 55.041' N	122° 40.715' W
Helispot	H-219	39° 48.832' N	122° 37.880' W
Helispot	H-221	39° 27.360' N	122° 57.009' W
ICP	ICP North	40° 48.312' N	124° 09.027' W
ICP	ICP South	39° 25.001' N	123° 21.331' W

Label Point	Helibase	Fence - Cut/Damaged	Hazard	Airstrip or Airport	Gate	Water Source	Branch Break
MNF Wilderness	Event Point	Landing or Log Deck	Clean Up Area	Closure	Unimproved Landing Area	Restricted Water Source	Division Break
Aviation Checkpoints	Safety Hazard	Hazard Tree	Stream Crossing	Dip Site	Helispot	Value at Risk	Cal Fire Branch Break
Symboll D	Temporary Refuge Area	Retardant in Avoidance Area	Dozer Push	Drop Point	Incident Base	Spot Fire	Cal Fire Division Break
Checkpoint	Repair Point	Culvert	Water Development or Draft Site	Fire Station	Incident Command Post	Small Fire	Segment Break
Water Dip		Road Repair	Aerial Ignition	First Aid Station	Internet Access		Zone Break
		Structure Wrap					Checkpoint
							Aviation Obstacle
							TFR North
							TFR South

Datum: North American 1983, UTM Zone 10