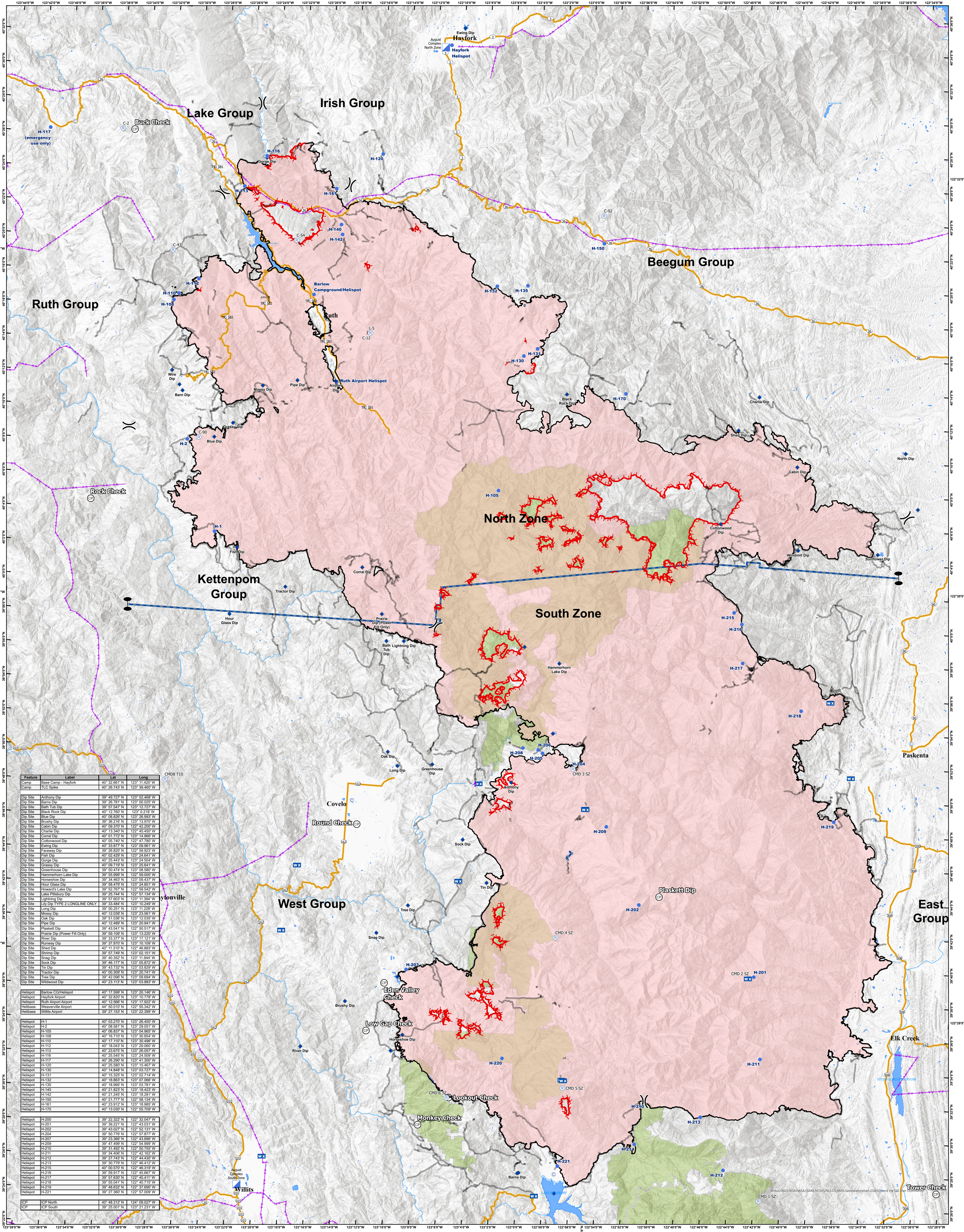


11/10/2020
CA-MNF-000753
AUGUST COMPLEX



Feature	Label	UTM	Long
Camp	Base Camp - Hayfork	40 32 961 N	123 11 420 W
Camp	TLC Spike	40 26 743 N	123 39 460 W
Dip Site	Anthony Dip	39 49 727 N	123 02 468 W
Dip Site	Barnes Dip	39 26 781 N	123 00 025 W
Dip Site	Black Rock Dip	39 12 760 N	123 02 218 W
Dip Site	Blue Dip	40 08 826 N	123 28 993 W
Dip Site	Brushy Dip	39 36 216 N	123 13 970 W
Dip Site	Cabin Dip	40 06 370 N	122 42 200 W
Dip Site	Corral Dip	40 13 360 N	122 45 520 W
Dip Site	Cottonwood Dip	40 01 772 N	123 14 966 W
Dip Site	Corral Dip	40 05 749 N	122 47 780 W
Dip Site	Grassy Dip	40 33 875 N	123 09 961 W
Dip Site	Paraway Dip	39 26 820 N	122 59 923 W
Dip Site	Push Dip	40 02 429 N	123 24 641 W
Dip Site	George Dip	40 25 443 N	122 28 204 W
Dip Site	Grassy Dip	40 00 719 N	123 23 641 W
Dip Site	Greenhouse Dip	39 52 414 N	123 08 580 W
Dip Site	Hammerhorn Lake Dip	39 55 999 N	122 59 000 W
Dip Site	Horseshoe Dip	39 34 483 N	123 09 437 W
Dip Site	Hour Glass Dip	39 58 479 N	123 24 851 W
Dip Site	Howard's Lake Dip	39 52 767 N	122 59 542 W
Dip Site	Lake Pillsbury Dip	39 25 744 N	122 57 134 W
Dip Site	Lighting Dip	39 51 823 N	123 11 384 W
Dip Site	UV Dip TYPE 2 LONGLINE ONLY	39 33 484 N	123 10 249 W
Dip Site	Long Dip	39 50 281 N	123 11 228 W
Dip Site	Mossy Dip	39 52 039 N	123 23 561 W
Dip Site	Oak Dip	39 51 036 N	123 12 035 W
Dip Site	Pipe Dip	40 12 469 N	123 20 941 W
Dip Site	Plaskett Dip	39 43 541 N	122 50 517 W
Dip Site	Prairie Dip (Power Fill Only)	39 59 109 N	123 13 220 W
Dip Site	River Dip	39 33 373 N	123 11 121 W
Dip Site	Runway Dip	39 37 870 N	123 10 109 W
Dip Site	Shed Dip	40 11 310 N	122 46 883 W
Dip Site	Shrimp Dip	39 51 746 N	122 02 151 W
Dip Site	Snag Dip	39 40 352 N	123 11 844 W
Dip Site	Snag Dip	39 40 352 N	123 11 844 W
Dip Site	Stock Dip	39 46 177 N	123 05 872 W
Dip Site	Tin Dip	39 43 252 N	123 03 828 W
Dip Site	Tractor Dip	40 00 309 N	123 20 741 W
Dip Site	Tree Dip	39 42 566 N	123 09 856 W
Dip Site	Wildwood Dip	40 23 113 N	123 03 983 W
Helispot	Bairns CO Helispot	40 11 569 N	123 29 149 W
Helispot	Hayfork Airport	40 32 820 N	123 10 778 W
Helispot	Ruth Airport	40 12 586 N	123 17 922 W
Helispot	Wheatville Airport	40 10 010 N	122 55 342 W
Helispot	Willits Airport	39 27 153 N	123 22 399 W
Helispot	H-1	40 03 370 N	123 26 400 W
Helispot	H-2	40 08 581 N	123 29 051 W
Helispot	H-100	40 06 837 N	123 04 985 W
Helispot	H-108	40 16 710 N	123 04 854 W
Helispot	H-110	40 17 110 N	123 30 496 W
Helispot	H-112	40 18 043 N	123 29 000 W
Helispot	H-113	40 23 675 N	123 26 057 W
Helispot	H-116	40 25 545 N	123 24 509 W
Helispot	H-119	40 26 290 N	123 41 300 W
Helispot	H-120	40 29 580 N	123 15 487 W
Helispot	H-130	40 14 848 N	123 02 727 W
Helispot	H-131	40 15 325 N	123 02 714 W
Helispot	H-132	40 18 883 N	123 07 069 W
Helispot	H-133	40 18 959 N	123 03 181 W
Helispot	H-140	40 21 825 N	123 18 423 W
Helispot	H-142	40 21 249 N	123 18 281 W
Helispot	H-150	40 21 773 N	122 58 134 W
Helispot	H-161	40 23 912 N	123 18 585 W
Helispot	H-170	40 13 030 N	122 55 709 W
Helispot	H-200	39 22 322 N	122 32 047 W
Helispot	H-201	39 38 221 N	122 43 031 W
Helispot	H-202	39 43 027 N	122 56 131 W
Helispot	H-204	39 50 776 N	122 57 877 W
Helispot	H-205	39 47 489 N	122 54 999 W
Helispot	H-210	39 31 482 N	122 50 755 W
Helispot	H-211	39 34 826 N	122 44 430 W
Helispot	H-212	39 27 743 N	122 44 430 W
Helispot	H-213	39 30 779 N	122 46 412 W
Helispot	H-215	40 00 370 N	122 46 312 W
Helispot	H-216	39 59 917 N	122 45 667 W
Helispot	H-217	39 57 830 N	122 45 411 W
Helispot	H-218	39 55 041 N	122 46 715 W
Helispot	H-219	39 46 632 N	122 37 600 W
Helispot	H-221	39 27 366 N	122 51 000 W
ICP	ICP North	40 48 312 N	124 09 027 W
ICP	ICP South	39 25 001 N	123 21 231 W

<ul style="list-style-type: none"> Label Point MNF Wilderness Aviation Checkpoints SymbolID Checkpoint Water Dip 	<ul style="list-style-type: none"> Event Point Aerial Hazard Safety Zone Temporary Refuge Area Repair Point 	<ul style="list-style-type: none"> Fence - Cut/Damaged Landing or Log Deck Hazard Tree Retardant in Avoidance Area Culvert Road Repair Structure Wrap 	<ul style="list-style-type: none"> Hazard Clean Up Area Stream Crossing Dozer Push Water Development or Draft Site Aerial Ignition 	<ul style="list-style-type: none"> Airstrip or Airport Closure Dip Site Drop Point Fire Origin First Aid Station First Aid Station Internet Access 	<ul style="list-style-type: none"> Gate Helibase Unimproved Landing Area Helispot Incident Base Incident Command Post Internet Access 	<ul style="list-style-type: none"> Lookout Mobile Weather Unit Repeater Retardant/Mud Pit Sling Site Spot Fire Staging Area 	<ul style="list-style-type: none"> Water Source Restricted Water Source Value at Risk Forward Supply Base Camp Small Fire 	<ul style="list-style-type: none"> Branch Break Division Break Cal Fire Branch Break Cal Fire Division Break Segment Break Zone Break Checkpoint Aviation Obstacle Zone Break
--	--	--	--	--	--	--	---	--

0 2 3 6 9 12 Miles

Datum: North American 1983, UTM Zone 10