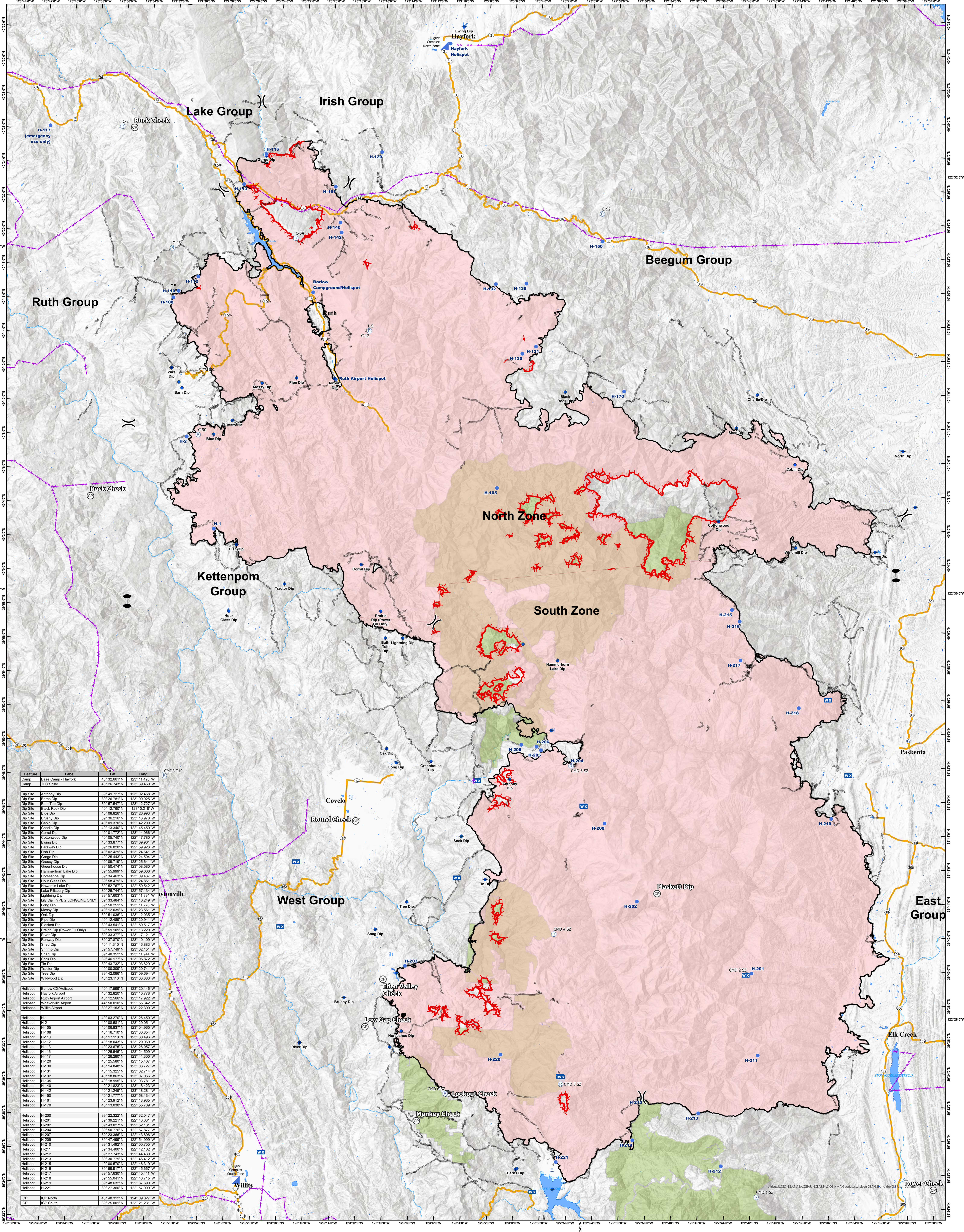


11/12/2020  
CA-MNF-000753  
AUGUST COMPLEX



Feature	Label	UTM	Long
Camp	Base Camp - Hayfork	40° 32.981' N	123° 11.420' W
Camp	TLC Spike	40° 26.743' N	123° 39.460' W
Dip Site	Anthony Dip	39° 49.727' N	123° 02.468' W
Dip Site	Barnes Dip	39° 26.781' N	123° 00.025' W
Dip Site	Bath Tub Dip	39° 51.943' N	123° 12.222' W
Dip Site	Black Rock Dip	40° 12.760' N	123° 02.218' W
Dip Site	Blue Dip	40° 08.826' N	123° 28.993' W
Dip Site	Brushy Dip	39° 36.216' N	123° 13.970' W
Dip Site	Cabin Dip	40° 06.370' N	122° 42.200' W
Dip Site	Charnie Dip	40° 13.360' N	122° 45.450' W
Dip Site	Corral Dip	40° 01.772' N	123° 14.966' W
Dip Site	Cottonwood Dip	40° 55.749' N	122° 47.780' W
Dip Site	Grassy Dip	40° 33.875' N	123° 09.961' W
Dip Site	Faraway Dip	39° 26.820' N	122° 59.923' W
Dip Site	Flash Dip	40° 02.429' N	123° 24.641' W
Dip Site	George Dip	40° 25.443' N	123° 28.504' W
Dip Site	Grassy Dip	40° 00.719' N	123° 23.641' W
Dip Site	Greenhouse Dip	39° 52.414' N	123° 05.560' W
Dip Site	Hammerhorn Lake Dip	39° 55.999' N	122° 59.000' W
Dip Site	Horseshoe Dip	39° 34.483' N	123° 09.437' W
Dip Site	Hour Glass Dip	39° 58.479' N	123° 24.851' W
Dip Site	Howard's Lake Dip	39° 52.767' N	122° 59.542' W
Dip Site	Lake Pillsbury Dip	39° 25.744' N	122° 57.134' W
Dip Site	Lighting Dip	39° 51.803' N	123° 11.384' W
Dip Site	Lily Dip TYPE 2 LONGLINE ONLY	39° 33.484' N	123° 10.249' W
Dip Site	Long Dip	39° 50.281' N	123° 11.228' W
Dip Site	Mossy Dip	39° 52.039' N	123° 23.961' W
Dip Site	Oak Dip	39° 51.036' N	123° 12.035' W
Dip Site	Pipe Dip	40° 12.469' N	123° 20.941' W
Dip Site	Plaskett Dip	39° 43.541' N	122° 50.517' W
Dip Site	Prairie Dip (Power Fill Only)	39° 59.109' N	123° 13.220' W
Dip Site	River Dip	39° 33.373' N	123° 11.121' W
Dip Site	Runway Dip	39° 37.870' N	123° 10.109' W
Dip Site	Shed Dip	40° 11.310' N	122° 46.883' W
Dip Site	Shrine Dip	39° 51.746' N	123° 02.151' W
Dip Site	Snag Dip	39° 40.352' N	123° 11.844' W
Dip Site	Stock Dip	39° 46.177' N	123° 05.872' W
Dip Site	Tin Dip	39° 43.252' N	123° 03.928' W
Dip Site	Tractor Dip	40° 00.309' N	123° 20.741' W
Dip Site	Tree Dip	39° 42.566' N	123° 09.856' W
Dip Site	Wildwood Dip	40° 23.113' N	123° 03.983' W
Helispot	Baird/CO Helispot	40° 11.599' N	123° 29.149' W
Helispot	Hayfork Airport	40° 32.820' N	123° 10.778' W
Helispot	Ruth Airport	40° 12.586' N	123° 17.922' W
Helispot	Wheeler Airport	40° 10.010' N	123° 55.342' W
Helispot	Willits Airport	39° 27.153' N	123° 22.399' W
Helispot	H-1	40° 03.970' N	123° 26.400' W
Helispot	H-2	40° 08.581' N	123° 29.051' W
Helispot	H-100	40° 06.837' N	123° 04.965' W
Helispot	H-108	40° 16.710' N	123° 04.854' W
Helispot	H-110	40° 17.110' N	123° 30.496' W
Helispot	H-112	40° 18.043' N	123° 29.000' W
Helispot	H-113	40° 23.675' N	123° 26.057' W
Helispot	H-116	40° 25.545' N	123° 24.509' W
Helispot	H-119	40° 26.290' N	123° 41.300' W
Helispot	H-120	40° 29.580' N	123° 15.487' W
Helispot	H-130	40° 14.848' N	123° 02.774' W
Helispot	H-131	40° 15.325' N	123° 02.714' W
Helispot	H-132	40° 18.883' N	123° 07.069' W
Helispot	H-133	40° 18.995' N	123° 03.181' W
Helispot	H-140	40° 21.825' N	123° 18.423' W
Helispot	H-142	40° 21.249' N	123° 18.281' W
Helispot	H-150	40° 21.773' N	122° 58.134' W
Helispot	H-161	40° 23.912' N	123° 18.985' W
Helispot	H-170	40° 13.030' N	122° 55.709' W
Helispot	H-200	39° 22.322' N	122° 32.047' W
Helispot	H-201	39° 38.221' N	122° 43.031' W
Helispot	H-202	39° 43.027' N	122° 56.131' W
Helispot	H-204	39° 50.776' N	122° 57.877' W
Helispot	H-205	39° 47.489' N	122° 54.999' W
Helispot	H-210	39° 31.482' N	122° 50.755' W
Helispot	H-211	39° 34.826' N	122° 45.342' W
Helispot	H-212	39° 27.743' N	122° 44.430' W
Helispot	H-213	39° 30.779' N	122° 46.412' W
Helispot	H-215	40° 00.370' N	122° 46.318' W
Helispot	H-216	39° 59.917' N	122° 45.667' W
Helispot	H-217	39° 57.830' N	122° 45.411' W
Helispot	H-218	39° 55.041' N	122° 46.715' W
Helispot	H-219	39° 46.632' N	122° 37.690' W
Helispot	H-221	39° 27.366' N	122° 51.000' W
ICP	ICP North	40° 48.312' N	124° 09.027' W
ICP	ICP South	39° 25.001' N	123° 21.231' W

<ul style="list-style-type: none"> <li>Label Point</li> <li>Aviation Checkpoints</li> <li>SymbolID</li> <li>Checkpoint</li> <li>Water Dip</li> </ul>	<ul style="list-style-type: none"> <li>Event Point</li> <li>Safety Zone</li> <li>Temporary Refuge Area</li> <li>Repair Point</li> </ul>	<ul style="list-style-type: none"> <li>Fence - Cut/Damaged</li> <li>Landing or Log Deck</li> <li>Hazard Tree</li> <li>Retardant in Avoidance Area</li> <li>Culvert</li> <li>Road Repair</li> <li>Structure Wrap</li> </ul>	<ul style="list-style-type: none"> <li>Hazard</li> <li>Clean Up Area</li> <li>Stream Crossing</li> <li>Dozer Push</li> <li>Water Development or Draft Site</li> <li>Aerial Ignition</li> </ul>	<ul style="list-style-type: none"> <li>Airstrip or Airport</li> <li>Closure</li> <li>Dip Site</li> <li>Drop Point</li> <li>Fire Origin</li> <li>First Aid Station</li> <li>Internet Access</li> </ul>	<ul style="list-style-type: none"> <li>Gate</li> <li>Helibase</li> <li>Unimproved Landing Area</li> <li>Helispot</li> <li>Incident Base</li> <li>Incident Command Post</li> <li>Internet Access</li> </ul>	<ul style="list-style-type: none"> <li>Lookout</li> <li>Mobile Weather Unit</li> <li>Repeater</li> <li>Retardant/Mud Pit</li> <li>Sling Site</li> <li>Spot Fire</li> <li>Staging Area</li> </ul>	<ul style="list-style-type: none"> <li>Water Source</li> <li>Restricted Water Source</li> <li>Value at Risk</li> <li>Forward Supply Base</li> <li>Camp</li> <li>Small Fire</li> </ul>	<ul style="list-style-type: none"> <li>Branch Break</li> <li>Division Break</li> <li>Cal Fire Branch Break</li> <li>Cal Fire Division Break</li> <li>Segment Break</li> <li>Zone Break</li> </ul>	<ul style="list-style-type: none"> <li>Checkpoints</li> <li>SymbolID</li> <li>Checkpoint</li> <li>Aviation Obstacle</li> </ul>
--	---	--	--	---	--	--	---	---	--

0 2 3 6 9 12 Miles

Datum: North American 1983, UTM Zone 10