

---

# Incident Action Plan

## MEETING SCHEDULE

0700 Morning Briefing  
0730 Radio Briefing  
1000 Cooperators Meeting  
1700 Pre-Planning Meeting  
1830 Night Ops Briefing  
1900 Planning Meeting

# August Complex Northwest Zone

FS: CA-MNF-000753 P5NFP421 (0508) DOI: CA-MNF-000753 NFP4

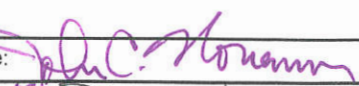
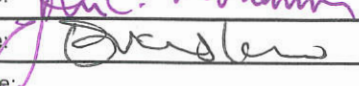
Wednesday– October 14, 2020



GPS Format NAD83 Degrees Decimal Minutes

---

# INCIDENT OBJECTIVES (ICS 202)

<b>1. Incident Name:</b>		<b>2. Operational Period:</b> 24 HRS NW	
AUGUST COMPLEX NORTHWEST ZONE		Date/Time From: 10/14/2020 0700 WED	Date/Time To: 10/15/2020 0700 THU
<b>3. Objective(s):</b>			
<b>STRATEGIC FRAMEWORK</b>			
Suppress the North West Zone of the August Complex using management strategies and tactics that provide the highest likelihood of success given the risks to responders.			
<b>MANAGEMENT OBJECTIVES</b>			
<ul style="list-style-type: none"> <li>• Ensure the safety and well-being of emergency responders and the public by making timely risk-informed decisions that align with Agency values.</li> <li>• Coordinate suppression efforts with Cal Fire Team 5 / Great Basin Team 2 / Southwest Team 1 under the Cost Range Area Command.</li> <li>• Protect natural and cultural resources of Federal, State, Local/Private, and Tribal interest by engaging agency resource advisors, partners, and community stakeholders in effective communication and planning.</li> <li>• Foster good relationships with local cooperators, stakeholders, and the public by providing coordinated, accurate, and timely information.</li> <li>• Keep cost commensurate with values at risk by working with the local unit and coordinating with the Agency Administrator and Incident Business Advisor.</li> <li>• Coordinate with the COVID-19 Advisors and Health Liasion to ensure COVID mitigation measures and COVID response are in alignment with Agency expectations and adapt, as necessary, to changing conditions.</li> <li>• Coordinate with the host units to determine priorities for suppression repair needs and begin ordering the resources needed.</li> </ul>			
<b>CONTROL OBJECTIVES</b>			
<ul style="list-style-type: none"> <li>• Keep the fire south of Miller Place Road from the south fork of the Trinity River to Maynard Road to Hwy 36.</li> <li>• Keep the fire south of Hwy 36 from DP 118 to the Little Van Duzen River at the DPA.</li> <li>• Keep the fire east of the DPA boundary from Hwy 36 and the Little Van Duzen River to DP 90 at Kettenpom.</li> <li>• Continue to evaluate and provide structure protection along the Highway 36 corridor and in the Ruth Lake area.</li> <li>• Continue to scout and determine resource needs for contingency line construction north of Hwy 36.</li> </ul>			
<b>4. Operational Period Command Emphasis:</b>			
Using risk/reward decision making, hold existing containment lines and evaluate for opportunities to increase containment.			
<b>General Situational Awareness:</b>			
Prepare for Red Flag Warning and base all decisions upon expected fire behavior.			
<b>5. Site Safety Plan Required?</b> Yes <input type="checkbox"/> No <input checked="" type="checkbox"/>			
<b>Approved Site Safety Plan(s) Located at:</b>			
<b>6. Incident Action Plan</b> (the items checked below are included in this Incident Action Plan):			
<input checked="" type="checkbox"/> ICS 202	<input type="checkbox"/> ICS 207	Other Attachments:	
<input checked="" type="checkbox"/> ICS 203	<input type="checkbox"/> ICS 208	<input checked="" type="checkbox"/> DMOB PLAN	
<input checked="" type="checkbox"/> ICS 204	<input checked="" type="checkbox"/> ICS 220	<input checked="" type="checkbox"/> UNITLOG ICS 214	
<input checked="" type="checkbox"/> ICS 205	<input type="checkbox"/> Map/Chart	<input type="checkbox"/>	
<input type="checkbox"/> ICS 205A	<input checked="" type="checkbox"/> Weather Forecast/Tides/Currents	<input type="checkbox"/>	
<input checked="" type="checkbox"/> ICS 206		<input type="checkbox"/>	
<b>7. Prepared by:</b> JOHN NONEMAN		<b>Position/Title:</b> PSC1	<b>Signature:</b> 
<b>8. Approved by Incident Commander:</b>		<b>Name:</b> Evans Kuo GSTI IC.	<b>Signature:</b> 
ICS 202	IAP Page	<b>Date/Time:</b>	

## ORGANIZATION ASSIGNMENT LIST (ICS 203)

<b>1. Incident Name:</b>		<b>2. Operational Period:</b>		<b>DAY/NIGHT</b>	
<b>AUGUST COMPLEX – NORTHWEST ZONE</b>		Date/Time From: 10/14/2020 0700		WED	
		Date/Time From: 10/15/2020 0700		THURS	
<b>3. Incident Commander(s) and Command Staff:</b>		TECHNOLOGY SUPPORT SPECIALIST		ANDREW FRESH; JOHN SCHILZ; MICAH WEEKS; KEVIN SHIRLEY; ERNIE ORTIZ (V)	
IC/UC	EVANS KUO; SAM HICKS (t)	INCIDENT METEOROLOGIST		MIKE OTTENWELLER	
Safety Officer	PAUL GAUCHAY; RICK SCHULER	<b>6. Logistics Section:</b>			
Covid-19 Coordinator	KAILI MCCRAY	CHIEF		MIKE DETTORI; LAUREL SIMOS(V); JEFF NAUMAN (t)	
Medical Unit	TYLA NORTHRUP; SHAUN KINNEY (t); BILL HOWELL; MAGENTA WIDNER (t)	SUPPLY UNIT		ROB HAMILTON; STEVE FLETCHER	
Information Officer	MARY CERNICEK; KIM OSBORNE (t); MICHAEL DAVIS; KJ POLLOCK (V); JENNIFER MYSLIVY (V)	FACILITIES UNIT		DAVE BARFUSS; STEWART CLAY	
Human Resources	SCOTT PALMER; SHERRY NEAL (V)	GROUND SUPPORT UNIT		KEN SHURTZ; JUSTIN PETERSON	
Liaison Officer	JEREMY ROBERTSON; MIKE FERRIS	COMMUNICATIONS UNIT		BRANDON DIEMER	
<b>4. Agency/Organization Representative(s):</b>		ORDERING		KRISTI REECE; CYNTHIA ROGERS	
<b>Agency/Organization</b>		FOOD UNIT		COLLEEN GALLAGHER	
USFS	ANN CARLSON / FRANK AEBLY / CHRISTINE HILL	<b>7. Operations Section:</b>			
SHASTA TRINITY NF SUPERVISOR	SCOTT RUSSEL	FIELD OPS SECTION CHIEF		JASON BUTLER; TYLER MONROE (t)	
MENDOCINO NF SUPERVISOR	ANN CARLSON	PLANNING OPS		JOHN KENNEDY; BRETT WATERS (t)	
SIX RIVERS NF	TED MCARTHUR	BRANCH		NIGHTS	
		DIVISION/ GROUP		A1 / C1/ E1	ADAM BOOTH; BRIAN WOLVVERT (t)
USFS AGENCY REP	RHEA WHALEN	<b>Branch</b>			
FMO	TERRY NICKERSON	BRANCH DIRECTOR			
READ	GALEN ANDERSON	DIVISION/ GROUP		A1	NATE SCHINKLE; PAT ROMPORT (t)
CAL FIRE	KURT DERNEDDE (HUU UNIT DEPUTY CHIEF)	DIVISION/GROUP		B1	JASON GIBB
BLM	ROB WINKLER	<b>Branch</b>			
SOUTH ZONE BAER IC	KENDEL YOUNG	BRANCH DIRECTOR		15/21	
		DIVISION/GROUP		C1	JUSTIN CUTLER; COLBY SMITH (t)
		DIVISION/GROUP		D1/E1	LORETTA DUKE
		DIVISION/GROUP		G1	MATT CALL; CHRIS MCCANDLESS (t)
		DIVISION/GROUP		F1	UNSTAFFED
		DIVISION/GROUP		NW STRUCTURE	GASDIK/LANNING (t)
<b>5. Planning Section:</b>					
CHIEF	J. NONEMAN; J.BRAUNSTEIN; T. MARTY; B. ELDREDGE (V)	<b>7b. Air Operation Branch:</b>			
RESOURCES UNIT	KARI GROMATZKY; DEB LOPEZ (T); BRAD WITKIN	AIR OPS BRANCH DIRECTOR		DON CLARK	
SITUATION UNIT	JENNIFER STEVENS	AIR SUPPORT SUPERVISOR		MICKEY SMITH	
DOCUMENTATION UNIT	CHARLOTTE THOMPSON (V)	<b>8. Finance/ Administrator Section:</b>			
DEMOBILIZATION UNIT	RHONDA TORONTO	CHIEF		FRAN WILSON; ROBYN FITZGERALD (t)	
FIRE BEHAVIOR ANALYST	TOBIN KELLEY (V)	TIME UNIT		LISA YOUNG	
TRAINING SPECIALIST		PROCUREMENT UNIT		AMELIA VELASCO; SANDRA JEWKES	
GIS SPECIALIST	MELANIA STOEBER; CHAD ENNIS (t)	COST UNIT		MIKE VAN HEMELRYCK; JEANNIE DUNCAN	
<b>9. Prepared by:</b>	<b>Name:</b> KARI GROMATZKY	<b>Position/Title:</b> RESL			<b>Signature:</b>
<b>(V)SUPPORTING FIRE VIRTUALLY</b>		<b>Date/Time:</b> 10/12/2020 2000			



## Fire Weather Forecast



**FORECAST NO:** 54  
**PREDICTION FOR:** 24 Hour Shift  
**SHIFT DATE:** Wednesday 10/14/2020  
**TIME AND DATE ISSUED:** 10/13/2020 2000 PDT

**INCIDENT:** August Complex  
**UNIT:** Mendocino NF  
**SIGNED:** *Mike Ottenweller*  
Incident Meteorologist (IMET)

**\*\*\*RED FLAG WARNING WEDNESDAY NIGHT THROUGH FRIDAY MORNING\*\*\***

### Discussion:

Today we will start to turn the corner into a much more active fire weather pattern. Ridge recoveries will not be nearly as good to start the day and they will stay persistently low. Temperatures will warm a few more degrees from Tuesday. Winds will start to shift to a more NE direction and increase as we get towards the evening. These winds will bring in the truly dry air, especially at higher elevations, leading to Red Flag Warnings. Thursday could be rather volatile with minimal smoke shading allowing for winds to combine with instability.

### TODAY:

**SKY/WEATHER:** Warming, much drier, and haze.  
**Max Temperature:** 83-89 in valleys. 75-80 higher elevations.  
**Min RH:** 18-23% lower valleys/slopes. 11-16% higher elevations.

### WINDS:

#### **-20 ft Level-WINDS**

**Lower Valleys/Lower Slopes:** Terrain-driven 3-6 mph becoming N-NE 5-8 mph with gusts to 10 mph in the afternoon.

**Upper Ridges:** NE winds 8-12 mph increasing to 10-15 mph during the afternoon.

**TRANSPORT WINDS:** N 15 -20 mph. **Mixing Height:** 6,000 ft.

### TONIGHT:

**SKY/WEATHER:** Clear.

**Min Temperature:** Mid 40s to mid 50s in valleys. 50 to 60 higher elevations.  
**Max RH:** 45 to 55% in valleys. 20 to 30% higher elevations- falling to 15 to 20% by early morning.

### WINDS:

#### **-20 ft Level-**

**Valleys/Lower Slopes:** NW 3-5 mph becoming terrain-driven/downslope.

**Upper Ridges:** NE-E 12-18 mph with gusts to 25 mph.

### THURSDAY:

**SKY/WEATHER:** Warming, much drier, and haze.  
**Max Temperature:** 86-92 in valleys. 77-82 higher elevations.  
**Min RH:** 14-19% lower elevations. 10-15% higher elevations.

### WINDS:

#### **-20 ft Level-WINDS**

**Lower Valleys/Lower Slopes:** Terrain-driven 3-6 mph becoming N-NE 6-10 mph with gusts to 14 mph in the afternoon.

**Upper Ridges:** NE winds 12-18 mph with gusts to 25 mph diminishing during the afternoon.

**TRANSPORT WINDS:** N-NE 20 mph. **Mixing Height:** 8,000 ft.

### Outlook Friday through Sunday:

The Red Flag Warning will continue through Friday morning. There will be one more surge of gusty offshore winds Friday morning. Friday will likely be the hottest of the days with temperatures into the 90s. All of this will be exacerbated by several continuous days of warm and extremely dry conditions. Conditions begin to moderate as we head into the weekend.



RAWS Observations

Submit Observations



**Division/Group Assignment List (ICS 204 WF)**  
**Controlled Unclassified Information//Basic**

<b>1. Incident Name:</b>				<b>3.</b>		
AUGUST COMPLEX NORTHWEST ZONE				<b>Branch:</b>		<b>Division/Group:</b>
<b>2. Operational Period:</b> 24 HRS NW				<b>15 / 21</b>		<b>C1</b>
Date/Time From: 10/14/2020 0700 WED		Date/Time To: 10/15/2020 0700 THU				
<b>4. Operations Personnel</b>						
<b>OPERATIONS CHIEF</b>		JASON BUTLER 10/26 TYLER MONROE 10/26 (T)		<b>BRANCH DIRECTOR</b>		THOMAS TAYLOR 10/12 JAKE AKERBERG (T)
<b>AIR SUPPORT GROUP SUPERVISOR</b>		DON CLARK 10/25		<b>DIVISION/GROUP SUPERVISOR</b>		JUSTIN CUTLER 10/26
*						
<b>5. Resources Assigned this Period</b>						
Strike Team / Task Force / Resource Designator		LWD	Leader	Number Persons	Drop Off PT./Time	Pick Up PT./Time
HC2 WILLAMETTE C-70023		10/22	VICENTE MONTANO	20	MEADOWS BASE CAMP/0700	MEADOWS BASE CAMP/1900
HC2 NORTH REFORESTATION C-30113		10/23	JOSE RINCON	20	MEADOWS BASE CAMP/0700	MEADOWS BASE CAMP/1900
HC2 JC OROZCO C-70018		10/24	KRYSTAL OROZCO	20	MEADOWS BASE CAMP/0700	MEADOWS BASE CAMP/1900
HEQB O-70123		10/22	GUY DODSON	1	MEADOWS BASE CAMP/0700	MEADOWS BASE CAMP/1900
ENG4 CHEWACK WILDFIRE ATTACK 99 E-70076		10/18	ANDREW GRAVES	3	MEADOWS BASE CAMP/0700	MEADOWS BASE CAMP/1900
ENG4 J3 CONTRACTING E-30281		10/23	REID BAREY	3	MEADOWS BASE CAMP/0700	MEADOWS BASE CAMP/1900
ENG6 BISHOP ENGINE E-531		10/17	ANNA WILD GUN	3	MEADOWS BASE CAMP/0700	MEADOWS BASE CAMP/1900
ENG6 PACIFIC NORTHWEST E-725		10/25	HUGO CHAPARRO	3	MEADOWS BASE CAMP/0700	MEADOWS BASE CAMP/1900
ENG6 PAT-RICK E-726		10/25	DICK SYPHERS	3	MEADOWS BASE CAMP/0700	MEADOWS BASE CAMP/1900
ENG6 FIRESTORM 9902 E-30091		10/24	JOSEPH ODOM	3	MEADOWS BASE CAMP/0700	MEADOWS BASE CAMP/1900
ENG6 NEW JERSEY E-569		10/23	TREVOR RAYNOR	2	MEADOWS BASE CAMP/0700	MEADOWS BASE CAMP/1900
ENG6 NW NEW JERSEY ENGINE E-570		10/23	JONATHAN ICNAPP	2	MEADOWS BASE CAMP/0700	MEADOWS BASE CAMP/1900
ENG6 NW NEW JERSEY E-571		10/23	GEORGE EFINGER	2	MEADOWS BASE CAMP/0700	MEADOWS BASE CAMP/1900
ENG6 SC-FMFE-30170		10/17	GREG BERNER	3	MEADOWS BASE CAMP/0700	MEADOWS BASE CAMP/1900
ENG4 J3 CONTRACTING E-513		10/15	KEIR MURPHY	3	MEADOWS BASE CAMP/0700	MEADOWS BASE CAMP/1900
WTT1 SOUTHWESTERN WILDFIRE T-45 E-30606		10/14	CODY RATTAN	2	MEADOWS BASE CAMP/0700	MEADOWS BASE CAMP/1900
WTS3 BUSCHER 313 E-30023		10/18	MICHELLE BUSCHER	1	MEADOWS BASE CAMP/0700	MEADOWS BASE CAMP/1900
<b>8. Division/Group Communication Summary</b>						
Function	Channel	RX Frequency N/W	RX Tone/NAC	TX Frequency N/W	TX Tone/NAC	Mode
COMMAND		SEE COMM PLAN				
<b>9. Prepared By (Resource Unit Leader)</b>			<b>Approved By (Planning Section Chief)</b>		<b>Date</b>	<b>Time</b>
KARI GROMATZKY			JASON BRAUNSTEIN		10/13/2020	2000

**Division/Group Assignment List (ICS 204 WF)**  
**Controlled Unclassified Information//Basic**

<b>1. Incident Name:</b>				<b>3.</b>		
AUGUST COMPLEX NORTHWEST ZONE				<b>Branch:</b>  <b>15 / 21</b>	<b>Division/Group:</b>  <b>C1</b>	
<b>2. Operational Period:</b> 24 HRS NW						
Date/Time From: 10/14/2020 0700 WED		Date/Time To: 10/15/2020 0700 THU				
<b>4. Operations Personnel</b>						
<b>OPERATIONS CHIEF</b>		JASON BUTLER 10/26 TYLER MONROE 10/26 (T)		<b>BRANCH DIRECTOR</b>		THOMAS TAYLOR 10/12 JAKE AKERBERG (T)
<b>AIR SUPPORT GROUP SUPERVISOR</b>		DON CLARK 10/25		<b>DIVISION/GROUP SUPERVISOR</b>		JUSTIN CUTLER 10/26
*						
<b>5. Resources Assigned this Period</b>						
Strike Team / Task Force / Resource Designator		LWD	Leader	Number Persons	Drop Off PT./Time	Pick Up PT./Time
WTS3 ALAN'S WT E-30037		10/24	GEORGIANNA NW	1	MEADOWS BASE CAMP/0700	MEADOWS BASE CAMP/1900
SKD2 BOAK E-70132		10/25	JEREMY SIMOES	1	MEADOWS BASE CAMP/0700	MEADOWS BASE CAMP/1900
FAL1 O-70152		10/16	DANIEL FRAZIER		MEADOWS BASE CAMP/0700	MEADOWS BASE CAMP/1900
FAL1 O-70151		10/16	MICHAEL FRAZIER		MEADOWS BASE CAMP/0700	MEADOWS BASE CAMP/1900
FMOD SWEDBERG O-503 R/R 10/9-10		10/24	RICHARD SMALLEY	2	MEADOWS BASE CAMP/0700	MEADOWS BASE CAMP/1900
FMOD WHITE HORSE FORESTRY O-504		10/24	MIKE MOORE	2	MEADOWS BASE CAMP/0700	MEADOWS BASE CAMP/1900
FMOD PACIFIC RIDGELINE O-1513		10/26			MEADOWS BASE CAMP/0700	MEADOWS BASE CAMP/1900
EMTF O-70112		10/22	NICHOLAS AFRICANO	1	MEADOWS BASE CAMP/0700	MEADOWS BASE CAMP/1900
EMTF O-30914		10/22	CONNOR WILSON	1	MEADOWS BASE CAMP/0700	MEADOWS BASE CAMP/1900
AMBU FRONTLINE EMS E-30513		10/21	MATT MAY	2	MEADOWS BASE CAMP/0700	MEADOWS BASE CAMP/1900
REM ELK CREEK O-70058		10/21	TIMOTHY SANDER	2	MEADOWS BASE CAMP/0700	MEADOWS BASE CAMP/1900
REAF O-30694		10/17	MICHAEL MCGRAW	1	MEADOWS BASE CAMP/0700	MEADOWS BASE CAMP/1900
<b>6. Control Operations/Work Assignments:</b>						
<b>TASK:</b> Mop up and patrol. Remove hazard trees along roadway.						
<b>PURPOSE:</b> Protect structures and minimize fire growth.						
<b>END STATE:</b> Structures secure and objectives met.						
<b>RISK ASSESSMENT:</b> High; Aviation; Hazard trees; Hazardous Materials.						
<b>7. Special Instructions:</b>						
<b>8. Division/Group Communication Summary</b>						
Function	Channel	RX Frequency N/W	RX Tone/NAC	TX Frequency N/W	TX Tone/NAC	Mode
COMMAND		SEE COMM PLAN				
<b>9. Prepared By (Resource Unit Leader)</b>			<b>Approved By (Planning Section Chief)</b>		<b>Date</b>	<b>Time</b>
KARI GROMATZKY			JASON BRAUNSTEIN		10/13/2020	2000

**Division/Group Assignment List (ICS 204 WF)**  
 Controlled Unclassified Information//Basic

<b>1. Incident Name:</b>				<b>3.</b>			
AUGUST COMPLEX NORTHWEST ZONE				<b>Branch:</b>		<b>Division/Group:</b>	
<b>2. Operational Period:</b> 24 HRS NW				<b>15 / 21</b>		<b>C1</b>	
Date/Time From: 10/14/2020 0700 WED		Date/Time To: 10/15/2020 0700 THU					
<b>4. Operations Personnel</b>							
<b>OPERATIONS CHIEF</b>		JASON BUTLER 10/26 TYLER MONROE 10/26 (T)		<b>BRANCH DIRECTOR</b>		THOMAS TAYLOR 10/12 JAKE AKERBERG (T)	
<b>AIR SUPPORT GROUP SUPERVISOR</b>		DON CLARK 10/25		<b>DIVISION/GROUP SUPERVISOR</b>		JUSTIN CUTLER 10/26	
*							
<b>7. Special Instructions:</b>							
<ul style="list-style-type: none"> <li>• Ensure communications with adjacent divisions and West Zone.</li> <li>• For urgent access through any construction delay on Hwy 36 near Dinsmore, contact Lou Robertson of Mercer Frazer Construction at 707-599-6372.</li> <li>• Be aware of soft shoulder and potholes between DP 109 and DP 110 on Van Duzen Rd.</li> <li>• All medical resources <b>MUST</b> check in with Eureka Communications once in place on assigned Divisions.</li> <li>• REMs available from Branch 21.</li> <li>• DIV Breakout at Dinsmore airstrip at 0800</li> </ul>							
<b>8. Division/Group Communication Summary</b>							
Function	Channel	RX Frequency N/W	RX Tone/NAC	TX Frequency N/W	TX Tone/NAC	Mode	
COMMAND		SEE COMM PLAN					
<b>9. Prepared By (Resource Unit Leader)</b>			<b>Approved By (Planning Section Chief)</b>			<b>Date</b>	<b>Time</b>
KARI GROMATZKY			JASON BRAUNSTEIN			10/13/2020	2000

**Division/Group Assignment List (ICS 204 WF)**  
**Controlled Unclassified Information//Basic**

<b>1. Incident Name:</b>				<b>3.</b>		
AUGUST COMPLEX NORTHWEST ZONE				<b>Branch:</b>		<b>Division/Group:</b>
<b>2. Operational Period:</b> 24 HRS NW				<b>15 / 21</b>		<b>D1/E1</b>
Date/Time From: 10/14/2020 0700 WED		Date/Time To: 10/15/2020 0700 THU				
<b>4. Operations Personnel</b>						
<b>OPERATIONS CHIEF</b>		JASON BUTLER 10/26 TYLER MONROE 10/26 (T)		<b>BRANCH DIRECTOR</b>		THOMAS TAYLOR 10/12 JAKE AKERBERG 10/20 (T)
<b>AIR OPERATIONS BRANCH DIRECTOR</b>				<b>DIVISION/GROUP SUPERVISOR</b>		LORETTA DUKE 10/15
<b>5. Resources Assigned this Period</b>						
Strike Team / Task Force / Resource Designator		LWD	Leader	Number Persons	Drop Off PT./Time	Pick Up PT./Time
HC2 DUST BUSTERS PLUS C-30114		10/16	GREYSON JOHNSON	20	MEADOWS BASE CAMP/0700	MEADOWS BASE CAMP/1900
HC2 PONDEROSA C-30111		10/14	JESS RODRIGUEZ	20	MEADOWS BASE CAMP/0700	MEADOWS BASE CAMP/1900
HEQB (T) O-30342		10/29	ERNEST PRAX	1	MEADOWS BASE CAMP/0700	MEADOWS BASE CAMP/1900
HEQB		10/23	NANCY CURRAN	1	MEADOWS BASE CAMP/0700	MEADOWS BASE CAMP/1900
TFLD O-30375		10/12	SHANE GLORY	1	MEADOWS BASE CAMP/0700	MEADOWS BASE CAMP/1900
TFLD E-30476.1		10/25	KRIS VANDERBURG	1	MEADOWS BASE CAMP/0700	MEADOWS BASE CAMP/1900
ENG4 ALDER CREEK 15 E-30122		10/22	EDDIE RODRIGUEZ	3	MEADOWS BASE CAMP/0700	MEADOWS BASE CAMP/1900
ENG6 OR- DEF 634 E-30476		10/25	JARON GORHAM	2	MEADOWS BASE CAMP/0700	MEADOWS BASE CAMP/1900
ENG6 4462 E-30415		10/15	CURTIS WAYKA	3	MEADOWS BASE CAMP/0700	MEADOWS BASE CAMP/1900
DOZ2 SOUTH FORK E-30507		10/21	TOM HEATON	1	MEADOWS BASE CAMP/0700	MEADOWS BASE CAMP/1900
ENG6 BIRDDOG FIRE E-197		10/26	JESSE SMITH	3	MEADOWS BASE CAMP/0700	MEADOWS BASE CAMP/1900
DOZ2 LONESTAR E-30120		10/23	NORTH STEMPLE	1	MEADOWS BASE CAMP/0700	MEADOWS BASE CAMP/1900
DOZ2 KISER E-30403		10/25	KYLE KISER	2	MEADOWS BASE CAMP/0700	MEADOWS BASE CAMP/1900
DOZ2 JOHN BOAK #4 E-30405		10/20	ANDY COCKBURN	1	MEADOWS BASE CAMP/0700	MEADOWS BASE CAMP/1900
EXCA2 STONY CREEK E-30097		10/23	KENDALL DINNING	2	MEADOWS BASE CAMP/0700	MEADOWS BASE CAMP/1900
CHIP SRF O-70219		10/26	JEREMY LEUIS	1	MEADOWS BASE CAMP/0700	MEADOWS BASE CAMP/1900
FALM ADAMS FALLERS O-30383 R&R 10/10-11		10/25	ERNEST ADAMS	2	MEADOWS BASE CAMP/0700	MEADOWS BASE CAMP/1900
SOF2 O-70174		10/27	DAVID NORTH	1	MEADOWS BASE CAMP/0700	MEADOWS BASE CAMP/1900
EMTF O-70050		10/20	BRETT ROBERTS	1	MEADOWS BASE CAMP/0700	MEADOWS BASE CAMP/1900
<b>8. Division/Group Communication Summary</b>						
Function	Channel	RX Frequency N/W	RX Tone/NAC	TX Frequency N/W	TX Tone/NAC	Mode
COMMAND		SEE COMM PLAN				
<b>9. Prepared By (Resource Unit Leader)</b>			<b>Approved By (Planning Section Chief)</b>		<b>Date</b>	<b>Time</b>
KARI GROMATZKY / BRAD WITKIN			JASON BRAUNSTEIN		10/13/2020	2000



**Division/Group Assignment List (ICS 204 WF)**  
**Controlled Unclassified Information//Basic**

<b>1. Incident Name:</b>			<b>3.</b>			
AUGUST COMPLEX NORTHWEST ZONE			<b>Branch:</b>		<b>Division/Group:</b>	
<b>2. Operational Period:</b> 24 HRS NW			<b>15 / 21</b>		<b>D1/E1</b>	
Date/Time From: 10/14/2020 0700 WED	Date/Time To: 10/15/2020 0700 THU					
<b>4. Operations Personnel</b>						
<b>OPERATIONS CHIEF</b>		JASON BUTLER 10/26 TYLER MONROE 10/26 (T)		<b>BRANCH DIRECTOR</b>		THOMAS TAYLOR 10/12 JAKE AKERBERG 10/20 (T)
<b>AIR OPERATIONS BRANCH DIRECTOR</b>				<b>DIVISION/GROUP SUPERVISOR</b>		LORETTA DUKE 10/15
<b>5. Resources Assigned this Period</b>						
Strike Team / Task Force / Resource Designator		LWD	Leader	Number Persons	Drop Off PT./Time	Pick Up PT./Time
EMPF O-30913		10/23	CONNOR WILSON	1	MEADOWS BASE CAMP/0700	MEADOWS BASE CAMP/1900
EMTF O-70112		10/22	NICHOLAS AFRICANO	1	MEADOWS BASE CAMP/0700	MEADOWS BASE CAMP/1900
REAF O-70160		10/23	PATRA FOULK	1	MEADOWS BASE CAMP/0700	MEADOWS BASE CAMP/1900
AMBU 101 FRONTLINE EMS E-30513		10/22	MATT MAY	2	MEADOWS BASE CAMP/0700	MEADOWS BASE CAMP/1900
REM ELK CREEK O-70058		10/21	TIMOTHY NW SANDER	2	MEADOWS BASE CAMP/0700	MEADOWS BASE CAMP/1900
ARCH (T) O-30295		10/26	JOHN FABLE	1	MEADOWS BASE CAMP/0700	MEADOWS BASE CAMP/1900
REAF O-30290		10/15	AARON MALSON	1	MEADOWS BASE CAMP/0700	MEADOWS BASE CAMP/1900
<b>6. Control Operations/Work Assignments:</b>						
<p><b>TASK:</b> Continue to protect structures in the North Ruth Lake area. Resource accountability. Assist other divisions as requested. Keep fire within containment lines. Keep within containment lines. Put out flare-ups.</p> <p><b>PURPOSE:</b> Patrol and Mop up to prevent unexpected flare-ups that could potentially break containment lines.</p> <p><b>END STATE:</b> Fire lines are contained and controlled.</p> <p><b>RISK ASSESSMENT:</b> <i>High; Public in fire area; Hazard trees; Hazardous Materials.</i></p> <p>Needs: FMOD</p>						
<b>7. Special Instructions:</b>						
<ul style="list-style-type: none"> <li>• Ensure communications with adjacent divisions and West Zone.</li> <li>• For urgent access through any construction delay on Hwy 36 near Dinsmore, contact Lou Robertson of Mercer Frazer Construction at 707-599-6372.</li> <li>• Coordinate with DIVS before entering and leaving divisions.</li> <li>• All medical resources <b>MUST</b> check in with Eureka Communications once in place on assigned Divisions.</li> </ul>						
<b>8. Division/Group Communication Summary</b>						
Function	Channel	RX Frequency N/W	RX Tone/NAC	TX Frequency N/W	TX Tone/NAC	Mode
COMMAND		SEE COMM PLAN				
<b>9. Prepared By (Resource Unit Leader)</b>			<b>Approved By (Planning Section Chief)</b>		<b>Date</b>	<b>Time</b>
KARI GROMATZKY / BRAD WITKIN			JASON BRAUNSTEIN		10/13/2020	2000

**Division/Group Assignment List (ICS 204 WF)**  
**Controlled Unclassified Information//Basic**

<b>1. Incident Name:</b>				<b>3.</b>		
AUGUST COMPLEX NORTHWEST ZONE				<b>Branch:</b>  <b>15 / 21</b>	<b>Division/Group:</b>  <b>G1</b>	
<b>2. Operational Period:</b> 24 HRS NW						
Date/Time From: 10/14/2020 0700 WED		Date/Time To: 10/15/2020 0700 THU				
<b>4. Operations Personnel</b>						
<b>OPERATIONS CHIEF</b>		JASON BUTLER 10/26		<b>BRANCH DIRECTOR</b>		THOM TAYLOR 10/12 JAKE AKERBERG 10/26 (T)
<b>AIR OPERATIONS BRANCH DIRECTOR</b>		DON CLARK 10/25		<b>DIVISION/GROUP SUPERVISOR</b>		MATT CALL 10/26 CHRIS MCCANDLESS (T)
<b>5. Resources Assigned this Period</b>						
Strike Team / Task Force / Resource Designator		LWD	Leader	Number Persons	Drop Off PT./Time	Pick Up PT./Time
HC21 MODOC C-70004		10/17	WILLIE ALMAND	19	MEADOWS/0700	MEADOWS/1900
HC21 COBRAS - 2 C-70003		10/18	ARTURIO ZEPADA	21	MEADOWS/0700	MEADOWS/1900
TFLD O-30605		10/14	MICHAEL MUCK	1	MEADOWS/0700	MEADOWS/1900
ES3 S/T SHF E-30752		10/14	KEITH SMYTH	26	MEADOWS/0700	MEADOWS/1900
ENG6 MT LNF MISSOULA #632 E-695		10/14	JAKE MURPHY JONES	9	MEADOWS/0700	MEADOWS/1900
ENG6 FL FNF 642 E-622		10/20	COLLIN CALHOUN	5	MEADOWS/0700	MEADOWS/1900
ENG6 FAIRMOUNT E-30349		10/18	DARIUSZ PIWKO	3	MEADOWS/0700	MEADOWS/1900
ENG6 DENX E-30053		10/23	MIKE COWGILL	3	MEADOWS/0700	MEADOWS/1900
ENG3 OWF 353 E-30729		10/22	AARON BRUNING	7	MEADOWS/0700	MEADOWS/1900
ENG3 RINCON VALLEY BR291 E-70075		10/18	WILLIAM BARBER	3	MEADOWS/0700	MEADOWS/1900
WTS1 ILLER TIMBER SERVICES E-30625 R & R 10/14-15		10/26	CINDY MONTAGUE	1	MEADOWS/0700	MEADOWS/1900
DOZ2 SRF DOZER 4 E-30411 R & R 10/13-14		10/29	JAY DILLON	1	MEADOWS/0700	MEADOWS/1900
DOZ2 BERRY JD750K E-30759		10/22	KEVIN BERRY	1	MEADOWS/0700	MEADOWS/1900
DOZ3 BERRY E-30758		10/21	DUSTY WELLINGTON	1	MEADOWS/0700	MEADOWS/1900
MAST COASTAL MOUNTAIN E-609		10/28	JOSH MCROBERTS	2	MEADOWS/0700	MEADOWS/1900
MAST COASTAL MOUNTAIN BOOM E-610		10/28	GREGG HANSON	2	MEADOWS/0700	MEADOWS/1900
MAST DILLON CONST E-30540		10/28	TOM MORSS	1	MEADOWS/0700	MEADOWS/1900
<b>8. Division/Group Communication Summary</b>						
Function	Channel	RX Frequency N/W	RX Tone/NAC	TX Frequency N/W	TX Tone/NAC	Mode
COMMAND		SEE COMM PLAN				
<b>9. Prepared By (Resource Unit Leader)</b>			<b>Approved By (Planning Section Chief)</b>		<b>Date</b>	<b>Time</b>
KARI GROMATZKY			JASON BRAUNSTEIN		10/13/2020	2000

**Division/Group Assignment List (ICS 204 WF)**  
**Controlled Unclassified Information//Basic**

<b>1. Incident Name:</b>			<b>3.</b>			
AUGUST COMPLEX NORTHWEST ZONE			<b>Branch:</b>		<b>Division/Group:</b>	
<b>2. Operational Period:</b> 24 HRS NW			<b>15 / 21</b>		<b>G1</b>	
Date/Time From: 10/14/2020 0700 WED	Date/Time To: 10/15/2020 0700 THU					
<b>4. Operations Personnel</b>						
<b>OPERATIONS CHIEF</b>		JASON BUTLER 10/26		<b>BRANCH DIRECTOR</b>		THOM TAYLOR 10/12 JAKE AKERBERG 10/26 (T)
<b>AIR OPERATIONS BRANCH DIRECTOR</b>		DON CLARK 10/25		<b>DIVISION/GROUP SUPERVISOR</b>		MATT CALL 10/26 CHRIS MCCANDLESS (T)
<b>5. Resources Assigned this Period</b>						
Strike Team / Task Force / Resource Designator	LWD	Leader	Number Persons	Drop Off PT./Time	Pick Up PT./Time	
SOF2	10/27	PHIL SPOR		MEADOWS/0700	MEADOWS/1900	
AMBU AMBULANCE T1 STAR E-30270				MEADOWS/0700	MEADOWS/1900	
EMTF O-1215	10/20	RAYMON MINES	1	MEADOWS/0700	MEADOWS/1900	
EMPF O-70056	10/22	JASON SILVESTRI	1	MEADOWS/0700	MEADOWS/1900	
EMTF O-1377	10/20	GAGE BAILEY	1	MEADOWS/0700	MEADOWS/1900	
EMTF O-70051	10/23	CURTIS CHRISTY	1	MEADOWS/0700	MEADOWS/1900	
<b>6. Control Operations/Work Assignments:</b>						
<p>TASK: Hold, patrol, complete dozer line on the 24 road and masticator on the 12 road.  PURPOSE: In case fire advances to the Trinity.  END STATE: Haul garbage and excess equipment backhaul. Fire perimeter secure.  RISK ANALYSIS: High; Public in fire area; Hazard trees; Heavy equipment; Hazardous Materials.  READ Galen Anderson on both A1 &amp; G1</p>						
<b>7. Special Instructions:</b>						
<ul style="list-style-type: none"> <li>Safety Officers available for all Divisions based on the highest priority.</li> <li>Coordinate with DIVS before entering and leaving divisions.</li> <li>Van Duzen road has soft shoulders.</li> <li>All medical resources <b>MUST</b> check in with Eureka Communications once in place on assigned Divisions.</li> </ul>						
<b>8. Division/Group Communication Summary</b>						
Function	Channel	RX Frequency N/W	RX Tone/NAC	TX Frequency N/W	TX Tone/NAC	Mode
COMMAND		SEE COMM PLAN				
<b>9. Prepared By (Resource Unit Leader)</b>		<b>Approved By (Planning Section Chief)</b>		<b>Date</b>	<b>Time</b>	
KARI GROMATZKY		JASON BRAUNSTEIN		10/13/2020	2000	

**Division/Group Assignment List (ICS 204 WF)**  
**Controlled Unclassified Information//Basic**

<b>1. Incident Name:</b>				<b>3.</b>		
AUGUST COMPLEX NORTHWEST ZONE				<b>Branch:</b>  <b>15/21</b>	<b>Division/Group:</b>  <b>NORTHWEST STRUCTURE</b>	
<b>2. Operational Period:</b> 24 HRS NW						
Date/Time From: 10/14/2020 0700 WED		Date/Time To: 10/15/2020 0700 THU				
<b>4. Operations Personnel</b>						
<b>OPERATIONS CHIEF</b>		JASON BUTLER 10/26 TYLER MONROE 10/26 (T)		<b>BRANCH DIRECTOR</b>		THOM TAYLOR 10/12 JAKE AKERBERG 10/20 (T)
<b>AIR OPS BRANCH DIRECTOR</b>		DON CLARK 10/25		<b>DIVISION/GROUP SUPERVISOR</b>		ARTURO GASDIK 10/17 BRIAN LANNING (T) 10/21
<b>5. Resources Assigned this Period</b>						
Strike Team / Task Force / Resource Designator	LWD	Leader	Number Persons	Drop Off PT./Time	Pick Up PT./Time	
HC2 NW MOSQUEDA REFORESTATION INC C-30074	10/24	NORBERTO PANTALEON	20	MEADOWS BASE CAMP/0700	MEADOWS BASE CAMP/1900	
*TF CA-SRF TASK FORCE IA	10/18	CHRIS YARBROUGH	1	MEADOWS BASE CAMP/0700	MEADOWS BASE CAMP/1900	
* ENG-311 E-70107 IA	10/18	B MCCULLOCH	5	MEADOWS BASE CAMP/0700	MEADOWS BASE CAMP/1900	
*ENGI-323- E-70111 IA	10/22	ANDREAS RUIZ	5	MEADOWS BASE CAMP/0700	MEADOWS BASE CAMP/1900	
*ENG-331 E-70108 IA	10/18	K. CRAWFORD	5	MEADOWS BASE CAMP/0700	MEADOWS BASE CAMP/1900	
*ENG-332 E-70109 IA	10/18	G. PHELAN	5	MEADOWS BASE CAMP/0700	MEADOWS BASE CAMP/1900	
*ENG-341 E-70110 IA	10/18	T. STOKESBERRY	5	MEADOWS BASE CAMP/0700	MEADOWS BASE CAMP/1900	
*ENG-342 E-70119 IA	10/23	D. LAMPLEY	5	MEADOWS BASE CAMP/0700	MEADOWS BASE CAMP/1900	
ENG361 E-70093.3	10/22	KYLE OKERMAN	5	MEADOWS BASE CAMP/0700	MEADOWS BASE CAMP/1900	
ENG4 NM BLM 1441 E-30741	10/15	FORREST PETERMAN	4	MEADOWS BASE CAMP/0700	MEADOWS BASE CAMP/1900	
ENG3 NW BULL LAKE 1262 E-30721	10/15	JIM WARD	3	MEADOWS BASE CAMP/0700	MEADOWS BASE CAMP/1900	
ENG3 J3 CONTRACTING E-30093	10/26	SEAN MODICA	3	MEADOWS BASE CAMP/0700	MEADOWS BASE CAMP/1900	
E-70093.7.1 ENG72	10/22	MATT BRADFORD	1	MEADOWS BASE CAMP/0700	MEADOWS BASE CAMP/1900	
ENG341 E-70093.6.1	10/22	ERIC HUSMANN	1	MEADOWS BASE CAMP/0700	MEADOWS BASE CAMP/1900	
ENG333 E-70093.5.1	10/22	BRANDON ALICEA	1	MEADOWS BASE CAMP/0700	MEADOWS BASE CAMP/1900	
ENG331 E-70093.4.1	10/22	DANNY RASSMUSSEN	1	MEADOWS BASE CAMP/0700	MEADOWS BASE CAMP/1900	
FMOD BURKE TIMBER FALLING #1 O-30639	10/21	STEVE BURKE	2	MEADOWS BASE CAMP/0700	MEADOWS BASE CAMP/1900	
<b>8. Division/Group Communication Summary</b>						
Function	Channel	RX Frequency N/W	RX Tone/NAC	TX Frequency N/W	TX Tone/NAC	Mode
COMMAND		SEE COMM PLAN				
<b>9. Prepared By (Resource Unit Leader)</b>		<b>Approved By (Planning Section Chief)</b>		<b>Date</b>	<b>Time</b>	
KARI GROMATZKY / BRAD WITKIN		JASON BRAUNSTEIN		10/13/2020	2000	

**Division/Group Assignment List (ICS 204 WF)**  
**Controlled Unclassified Information//Basic**

<b>1. Incident Name:</b>				<b>3.</b>		
AUGUST COMPLEX NORTHWEST ZONE				<b>Branch:</b>  <b>15/21</b>	<b>Division/Group:</b>  <b>NORTHWEST STRUCTURE</b>	
<b>2. Operational Period:</b> 24 HRS NW						
Date/Time From: 10/14/2020 0700 WED		Date/Time To: 10/15/2020 0700 THU				
<b>4. Operations Personnel</b>						
<b>OPERATIONS CHIEF</b>		JASON BUTLER 10/26 TYLER MONROE 10/26 (T)		<b>BRANCH DIRECTOR</b>		THOM TAYLOR 10/12 JAKE AKERBERG 10/20 (T)
<b>AIR OPS BRANCH DIRECTOR</b>		DON CLARK 10/25		<b>DIVISION/GROUP SUPERVISOR</b>		ARTURO GASDIK 10/17 BRIAN LANNING (T) 10/21
<b>5. Resources Assigned this Period</b>						
Strike Team / Task Force / Resource Designator	LWD	Leader	Number Persons	Drop Off PT./Time	Pick Up PT./Time	
STEN E-70093.1	10/21	MATTHEW MULLINS	1	MEADOWS BASE CAMP/0700	MEADOWS BASE CAMP/1900	
TFLD O-30608	10/13	RINTELEN (T)	1	MEADOWS BASE CAMP/0700	MEADOWS BASE CAMP/1900	
STEN (T) E-70093.2	10/21	ZACHORY HUFF	1	MEADOWS BASE CAMP/0700	MEADOWS BASE CAMP/1900	
*WT 235 E-70113 IA	10/18	C FUSI	2	MEADOWS BASE CAMP/0700	MEADOWS BASE CAMP/1900	
*WT 15 E-70112 IA	10/18	S. MCCULOCK	2	MEADOWS BASE CAMP/0700	MEADOWS BASE CAMP/1900	
WTT1 IDAHO HEAT SEEKER #4 E-30073	10/15	MARK HILDERBRAND	2	MEADOWS BASE CAMP/0700	MEADOWS BASE CAMP/1900	
WTT1 UCON FIRE DEPARTMENT E-30675	10/17	LARRY BOUNDS	2	MEADOWS BASE CAMP/0700	MEADOWS BASE CAMP/1900	
WTS2 ROCKY POINT 101 E-116	10/15	SHAWN SHELEBY	1	MEADOWS BASE CAMP/0700	MEADOWS BASE CAMP/1900	
EMTF O-1377	11/05	GAGE BAILEY	1	MEADOWS BASE CAMP/0700	MEADOWS BASE CAMP/1900	
EMTF O-1215	10/20	RAYMON MINES	1	MEADOWS BASE CAMP/0700	MEADOWS BASE CAMP/1900	
EMTF O-70051	10/22	CURTIS CHRISTY	1	MEADOWS BASE CAMP/0700	MEADOWS BASE CAMP/1900	
EMPF O-70056	10/22	JASON SILVESTRI	1	MEADOWS BASE CAMP/0700	MEADOWS BASE CAMP/1900	
AMBU AMBULANCE T1 E-30270				MEADOWS BASE CAMP/0700	MEADOWS BASE CAMP/1900	
<b>6. Control Operations/Work Assignments:</b>						
<p><b>TASK:</b> Maintain resource accountability. Continue to patrol and mop up along containment lines. Put out high visibility smokes. Backhaul equipment.</p> <p><b>PURPOSE:</b> Patrol and mop up to prevent unexpected flare-ups that could potentially break containment lines.</p> <p><b>END STATE:</b> Continue to protect structures in South Ruth lake area.</p> <p><b>RISK ASSESSMENT:</b> High; Public in fire area; Hazard trees; Hazardous Materials.</p> <p><b>*SRF Taskforce - IA designated resource</b></p>						
<b>8. Division/Group Communication Summary</b>						
Function	Channel	RX Frequency N/W	RX Tone/NAC	TX Frequency N/W	TX Tone/NAC	Mode
COMMAND		SEE COMM PLAN				
<b>9. Prepared By (Resource Unit Leader)</b>		<b>Approved By (Planning Section Chief)</b>		<b>Date</b>	<b>Time</b>	
KARI GROMATZKY / BRAD WITKIN		JASON BRAUNSTEIN		10/13/2020	2000	

**Division/Group Assignment List (ICS 204 WF)**  
 Controlled Unclassified Information//Basic

<b>1. Incident Name:</b>			<b>3.</b>			
AUGUST COMPLEX NORTHWEST ZONE			<b>Branch:</b>  <b>15/21</b>	<b>Division/Group:</b>  <b>NORTHWEST STRUCTURE</b>		
<b>2. Operational Period:</b> 24 HRS NW						
Date/Time From: 10/14/2020 0700	WED	Date/Time To: 10/15/2020 0700	THU			
<b>4. Operations Personnel</b>						
<b>OPERATIONS CHIEF</b>		JASON BUTLER 10/26 TYLER MONROE 10/26 (T)		<b>BRANCH DIRECTOR</b>		THOM TAYLOR 10/12 JAKE AKERBERG 10/20 (T)
<b>AIR OPS BRANCH DIRECTOR</b>		DON CLARK 10/25		<b>DIVISION/GROUP SUPERVISOR</b>		ARTURO GASDIK 10/17 BRIAN LANNING (T) 10/21
<b>7. Special Instructions:</b>						
<ul style="list-style-type: none"> <li>• Ensure communications with adjacent divisions and West Zone.</li> <li>• For urgent access through any construction delay on Hwy 36 near Dinsmore, contact Lou Robertson of Mercer Frazer Construction at 707-599-6372.</li> <li>• Coordinate with DIVS before entering and leaving divisions.</li> <li>• All medical resources <b>MUST</b> check in with Eureka Communications once in place on assigned Divisions.</li> </ul> <p>*Planning Ops will notify Line Ops of reporting location for assignment.</p>						
<b>8. Division/Group Communication Summary</b>						
Function	Channel	RX Frequency N/W	RX Tone/NAC	TX Frequency N/W	TX Tone/NAC	Mode
COMMAND		SEE COMM PLAN				
<b>9. Prepared By (Resource Unit Leader)</b>		<b>Approved By (Planning Section Chief)</b>		<b>Date</b>	<b>Time</b>	
KARI GROMATZKY / BRAD WITKIN		JASON BRAUNSTEIN		10/13/2020	2000	

**Division/Group Assignment List (ICS 204 WF)**  
**Controlled Unclassified Information//Basic**

<b>1. Incident Name:</b>				<b>3.</b>		
AUGUST COMPLEX NORTHWEST ZONE				<b>Branch:</b>  <b>21</b>	<b>Division/Group:</b>  <b>F1</b>	
<b>2. Operational Period:</b> 24 HRS NW						
Date/Time From: 10/14/2020 0700 WED		Date/Time To: 10/15/2020 0700 THU				
<b>4. Operations Personnel</b>						
<b>OPERATIONS CHIEF</b>		K CANNON 10/13/ B SHULLANBERGER R BRAY/S TACCHINI (T) 10/13		<b>AIR SUPPORT GROUP SUPERVISOR</b>		DON CLARK 10/25
<b>SAFETY</b>		KEN GREGOR 10/13/LAURA		<b>BRANCH DIRECTOR</b>		TERRY J WALTER 10/13
				<b>DIVISION/GROUP SUPERVISOR</b>		
<b>5. Resources Assigned this Period</b>						
Strike Team / Task Force / Resource Designator		LWD	Leader	Number Persons	Drop Off PT./Time	Pick Up PT./Time
UNSTAFFED						
<b>6. Control Operations/Work Assignments:</b>						
<b>7. Special Instructions:</b>						
<b>8. Division/Group Communication Summary</b>						
Function	Channel	RX Frequency N/W	RX Tone/NAC	TX Frequency N/W	TX Tone/NAC	Mode
COMMAND		SEE COMM PLAN				
<b>9. Prepared By (Resource Unit Leader)</b>			<b>Approved By (Planning Section Chief)</b>		<b>Date</b>	<b>Time</b>
KARI GROMATZKY/ BRAD WITKIN			JASON BRAUNSTEIN		10/13/2020	2000

**Division/Group Assignment List (ICS 204 WF)**  
**Controlled Unclassified Information//Basic**

<b>1. Incident Name:</b>			<b>3.</b>			
AUGUST COMPLEX NORTHWEST ZONE			<b>Branch:</b>		<b>Division/Group:</b>	
<b>2. Operational Period:</b> 24 HRS NW			<b>NW NIGHT</b>		<b>A1 / C1 / E/1</b>	
Date/Time From: 10/14/2020 0700 WED		Date/Time To: 10/15/2020 0700 THU				
<b>4. Operations Personnel</b>						
<b>OPERATIONS CHIEF</b>		JASON BUTLER 10/26 TYLER MONROE 10/26 (T)		<b>BRANCH DIRECTOR</b>		
<b>AIR OPS BRANCH DIRECTOR</b>		DON CLARK 10/25		<b>DIVISION/GROUP SUPERVISOR</b>		ADAM BOOTH 10/18 BRIAN WOLVURT 10/19 (T)
<b>5. Resources Assigned this Period</b>						
Strike Team / Task Force / Resource Designator		LWD	Leader	Number Persons	Drop Off PT./Time	Pick Up PT./Time
EQD CA MNF TASKFORCE#8 E-796		10/19	BRIAN COMBS	25	TLC/1900	TLC/0700
TFLD O-30340		10/14	TOBY STAPLETON	1	TLC/1900	TLC/0700
TFLD (T) O-30609		10/14	JEREMY OLDROYD	1	TLC/1900	TLC/0700
AMBU S MOUNTAIN MEDICS # 8 E-714			JASON S SAAVEDRA	2	TLC/1900	TLC/0700
<b>6. Control Operations/Work Assignments:</b>						
<p><b>TASK:</b> Mop up and secure around structures in Hettenshow, Ranney Glades and Ruth communities. Prepare for possible firing operations between west Ruth Lake and Division Alpha.</p> <p><b>Purpose:</b> Protect structures Hettenshaw, Ruth, and Mad River. Stop fire progression from going North and West.</p> <p><b>Endstate:</b> Protect structures in communities within and around control lines. Keep fire within current control lines from Ruth Lake to Division Alpha.</p> <p><b>RISK ASSESSMENT: High; Public in fire area; Hazard trees; Hazardous Materials, and Reduced Visibility.</b></p>						
<b>7. Special Instructions:</b>						
<ul style="list-style-type: none"> <li>For urgent access through any construction delay on Hwy 36 near Dinsmore, contact Lou Robertson of Mercer Frazer Construction at 707-599-6372.</li> <li>All medical resources <b>MUST</b> check in with Eureka Communications once in place on assigned Divisions.</li> </ul>						
<b>8. Division/Group Communication Summary</b>						
Function	Channel	RX Frequency N/W	RX Tone/NAC	TX Frequency N/W	TX Tone/NAC	Mode
COMMAND		SEE COMM PLAN				
<b>9. Prepared By (Resource Unit Leader)</b>			<b>Approved By (Planning Section Chief)</b>		<b>Date</b>	<b>Time</b>
KARI GROMATZKY / BRAD WITKIN			JASON BRAUNSTEIN		10/13/2020	2000



# Division/Group Assignment List (ICS 204 WF)

Controlled Unclassified Information//Basic

<b>1. Incident Name:</b>				<b>3.</b>		
AUGUST COMPLEX NORTHWEST ZONE				<b>Branch:</b>	<b>Division/Group:</b>	
<b>2. Operational Period:</b> <b>24 HRS NW</b>						
Date/Time From: 10/14/2020 0700                    WED		Date/Time To: 10/15/2020 0700                    THU		<b>A1</b>		
<b>4. Operations Personnel</b>						
<b>OPERATIONS CHIEF</b>		JASON BUTLER 10/26 TYLER MONROE 10/26 (T)		<b>BRANCH DIRECTOR</b>		
<b>AIR SUPPORT GROUP SUPERVISOR</b>		DON CLARK 10/25		<b>DIVISION/GROUP SUPERVISOR</b>		NATHAN SHINKLE 10/26 PATRICK ROMPORTL 10/16 (T)
*						
<b>5. Resources Assigned this Period</b>						
Strike Team / Task Force / Resource Designator		LWD	Leader	Number Persons	Drop Off PT./Time	Pick Up PT./Time
HC2 OREGON WOODS C-70015		10/20	JEREMIAH ALFORD	20	STEWART SPIKE/0700	STEWART SPIKE/1900
TFLD O-70016		10/21	ALEXANDER MIYAGISHIMA	1	STEWART SPIKE/0700	STEWART SPIKE/1900
TFLD (T) O-70018		10/21	SCOTT BENINATI	1	STEWART SPIKE/0700	STEWART SPIKE/1900
HEQB (T) O-1042		10/23	JUAN PALACIOS	1	STEWART SPIKE/0700	STEWART SPIKE/1900
ENG3 MSF 321 E-30724		10/15	MICHAEL GARL	4	STEWART SPIKE/0700	STEWART SPIKE/1900
ENG5 CRAZY MOUNTAIN E-70081		10/19	ROBERT SHERIDAN	3	STEWART SPIKE/0700	STEWART SPIKE/1900
ENG6 NCF 621 E-30239		10/19	JOHN RANDLE	3	STEWART SPIKE/0700	STEWART SPIKE/1900
ENG6 BLM 6695 E-30735		10/16	SAM RIKER	3	STEWART SPIKE/0700	STEWART SPIKE/1900
ENG6 ROCKY POINT E-789		10/19	DUSTY KREBSBACH	3	STEWART SPIKE/0700	STEWART SPIKE/1900
FMOD PAYETTE TREE SERVICE O-30564		10/16	JOHN BELLROSE	2	STEWART SPIKE/0700	STEWART SPIKE/1900
WTT2 DYNAMITE E-30096		10/20	AARON PHILLIPS	1	STEWART SPIKE/0700	STEWART SPIKE/1900
SOFR(T)		10/24	JAY MARTIN	1	STEWART SPIKE/0700	STEWART SPIKE/1900
IMSM O-1343		10/25	LISA PONCELET	1		
EMTF WILDERNESS MEDICS O-30914		10/22	WILLIAM RYAN	1	STEWART SPIKE/0700	STEWART SPIKE/1900
REM ELK CREEK O-70058		10/21	TIMOTHY SANDER	2	STEWART SPIKE/0700	STEWART SPIKE/1900
AMBULANCE 102 E-30558		10/25	DEVIN CARVALHO	2	STEWART SPIKE/0700	STEWART SPIKE/1900
<b>8. Division/Group Communication Summary</b>						
Function	Channel	RX Frequency N/W	RX Tone/NAC	TX Frequency N/W	TX Tone/NAC	Mode
COMMAND		SEE COMM PLAN				
<b>9. Prepared By (Resource Unit Leader)</b>			<b>Approved By (Planning Section Chief)</b>		<b>Date</b>	<b>Time</b>
KARI GROMATZKY			JASON BRAUNSTEIN		10/13/2020	2000

**Division/Group Assignment List (ICS 204 WF)**  
**Controlled Unclassified Information//Basic**

<b>1. Incident Name:</b>				<b>3.</b>		
AUGUST COMPLEX NORTHWEST ZONE				<b>Branch:</b>	<b>Division/Group:</b>  <b>A1</b>	
<b>2. Operational Period:</b> 24 HRS NW						
Date/Time From: 10/14/2020 0700 WED		Date/Time To: 10/15/2020 0700 THU				
<b>4. Operations Personnel</b>						
<b>OPERATIONS CHIEF</b>		JASON BUTLER 10/26 TYLER MONROE 10/26 (T)		<b>BRANCH DIRECTOR</b>		
<b>AIR SUPPORT GROUP SUPERVISOR</b>		DON CLARK 10/25		<b>DIVISION/GROUP SUPERVISOR</b>		NATHAN SHINKLE 10/26 PATRICK ROMPORTL 10/16 (T)
*						
<b>5. Resources Assigned this Period</b>						
Strike Team / Task Force / Resource Designator		LWD	Leader	Number Persons	Drop Off PT./Time	Pick Up PT./Time
ARCH O-30729		10/17	DAVID LOWE	1	STEWART SPIKE/0700	STEWART SPIKE/1900
REAF O-30109		10/13	GALEN ANDERSON	1	STEWART SPIKE/0700	STEWART SPIKE/1900
READ O-70176		10/26	LEVI LORIA	1	STEWART SPIKE/0700	STEWART SPIKE/1900
<b>6. Control Operations/Work Assignments:</b>						
<p><b>TASK:</b> Remove pumps, tanks, and hose lays, as necessary. Assess rehab of dozer lines and hand lines. Continue mop up and securing fire line. Identify and fall hazard trees.</p> <p><b>PURPOSE:</b> Keep fire line within containment lines.</p> <p><b>END STATE:</b> Mop up 50' from control lines and remove all pumps and hose lay. Rehab handline and dozer line back to a natural state,</p> <p><b>RISK ASSESSMENT:</b> <i>High; Aviation; Public in fire area; Hazard trees; Hazardous Materials.</i></p> <p>Need: 1 HEQB, FALB, 2 EXCA2</p>						
<b>7. Special Instructions:</b>						
<ul style="list-style-type: none"> <li>• Ensure communications with adjacent divisions and West Zone.</li> <li>• For urgent access through any construction delay on Hwy 36 near Dinsmore, contact Lou Robertson of Mercer Frazer Construction at 707-599-6372.</li> <li>• REMs available from Branch 21.</li> <li>• All medical resources <b>MUST</b> check in with Eureka Communications once in place on assigned Divisions.</li> </ul>						
<b>8. Division/Group Communication Summary</b>						
Function	Channel	RX Frequency N/W	RX Tone/NAC	TX Frequency N/W	TX Tone/NAC	Mode
COMMAND		SEE COMM PLAN				
<b>9. Prepared By (Resource Unit Leader)</b>			<b>Approved By (Planning Section Chief)</b>		<b>Date</b>	<b>Time</b>
KARI GROMATZKY			JASON BRAUNSTEIN		10/13/2020	2000

**Division/Group Assignment List (ICS 204 WF)**  
**Controlled Unclassified Information//Basic**

<b>1. Incident Name:</b>				<b>3.</b>		
AUGUST COMPLEX NORTHWEST ZONE				<b>Branch:</b>	<b>Division/Group:</b>  <b>B1</b>	
<b>2. Operational Period:</b> 24 HRS NW						
Date/Time From: 10/14/2020 0700 WED		Date/Time To: 10/15/2020 0700 THU				
<b>4. Operations Personnel</b>						
<b>OPERATIONS CHIEF</b>		JASON BUTLER 10/26 TYLER MONROE 10/26 (T)		<b>BRANCH DIRECTOR</b>		
<b>AIR SUPPORT GROUP SUPERVISOR</b>		DON CLARK 10/25		<b>DIVISION/GROUP SUPERVISOR</b>		JASON GIBB 10/18
<b>5. Resources Assigned this Period</b>						
Strike Team / Task Force / Resource Designator		LWD	Leader	Number Persons	Drop Off PT./Time	Pick Up PT./Time
HC1 MENDOCINO IHC C-70017		10/21	ERNEST CECCON	21	STEWART SPIKE/0700	STEWART SPIKE/1900
HC2 NORTH PACIFIC C-70014		10/20	STEVEN PEARCE		STEWART SPIKE/0700	STEWART SPIKE/1900
HC2 17007 - PATRICK ENVIRONMENTAL C-70013		10/20	JOE FOWARD	20	STEWART SPIKE/0700	STEWART SPIKE/1900
TFLD O-70015		10/22	DARIN SMITH	1	STEWART SPIKE/0700	STEWART SPIKE/1900
ENG3 FIREMOG 442 E-30597		10/25	KEVIN STULTZ	3	STEWART SPIKE/0700	STEWART SPIKE/1900
ENG5 LIBERTY WILDFIRE 55 E-70087		10/19	CEDAR WATSON	3	STEWART SPIKE/0700	STEWART SPIKE/1900
ENG5 UTAH FIRE COMPANY E-70089		10/19	JOHN BEAL	3	STEWART SPIKE/0700	STEWART SPIKE/1900
ENG6 NPS ENGINE 600		10/19	JOE WARD		STEWART SPIKE/0700	STEWART SPIKE/1900
WTS1 KISER CONST E-30402		10/24	KYLE KISER	2	STEWART SPIKE/0700	STEWART SPIKE/1900
WTS2 WITCHER TRUCKING E-773		10/18		1	STEWART SPIKE/0700	STEWART SPIKE/1900
WTT2 TRUMAN LNF3 E-70097		10/21	HENRY CASE	2	STEWART SPIKE/0700	STEWART SPIKE/1900
DOZ3 9 MILE E-30009		10/24	BILL KREIS	2	STEWART SPIKE/0700	STEWART SPIKE/1900
HEQB O-70134		10/25	CINDY LUETH	1	STEWART SPIKE/0700	STEWART SPIKE/1900
FMOD QUINNSO-70024		10/20	LEIF QUINN	2	STEWART SPIKE/0700	STEWART SPIKE/1900
EMTF (T) O-30525		10/19	BRIAN DE LA CRUZ	1	STEWART SPIKE/0700	STEWART SPIKE/1900
<b>8. Division/Group Communication Summary</b>						
Function	Channel	RX Frequency N/W	RX Tone/NAC	TX Frequency N/W	TX Tone/NAC	Mode
COMMAND		SEE COMM PLAN				
<b>9. Prepared By (Resource Unit Leader)</b>			<b>Approved By (Planning Section Chief)</b>		<b>Date</b>	<b>Time</b>
KARI GROMATZKY / BRAD WITKIN			JASON BRAUNSTEIN		10/13/2020	2000

**Division/Group Assignment List (ICS 204 WF)**  
**Controlled Unclassified Information//Basic**

<b>1. Incident Name:</b>			<b>3.</b>			
AUGUST COMPLEX NORTHWEST ZONE			<b>Branch:</b>		<b>Division/Group:</b>	
<b>2. Operational Period:</b> 24 HRS NW					<b>B1</b>	
Date/Time From: 10/14/2020 0700	WED	Date/Time To: 10/15/2020 0700	THU			
<b>4. Operations Personnel</b>						
<b>OPERATIONS CHIEF</b>		JASON BUTLER 10/26 TYLER MONROE 10/26 (T)		<b>BRANCH DIRECTOR</b>		
<b>AIR SUPPORT GROUP SUPERVISOR</b>		DON CLARK 10/25		<b>DIVISION/GROUP SUPERVISOR</b>		JASON GIBB 10/18
<b>5. Resources Assigned this Period</b>						
Strike Team / Task Force / Resource Designator		LWD	Leader	Number Persons	Drop Off PT./Time	Pick Up PT./Time
EMPF O-70057		10/21	JENNEL SMITH	1	STEWART SPIKE/0700	STEWART SPIKE/1900
REM ELK CREEK O-70058		10/21	TIMOTHY SANDER	2	STEWART SPIKE/0700	STEWART SPIKE/1900
AMBULANCE 102 E-3558					STEWART SPIKE/0700	STEWART SPIKE/1900
IMSM O-1343		10/18	LISA PONCELET	1	STEWART SPIKE/0700	STEWART SPIKE/1900
REAF O-30820		10/19	JASON JIMENEZ	1	STEWART SPIKE/0700	STEWART SPIKE/1900
READ O-70159		10/23	DEANNA SEIL	1	STEWART SPIKE/0700	STEWART SPIKE/1900
<b>6. Control Operations/Work Assignments:</b>						
<p><b>TASK:</b> Construct control line; prepare for burn-out operations.  <b>PURPOSE:</b> Limit fire spread to south and west.  <b>END STATE:</b> Fire does not spread into Kettenpom and into SR area.  <b>RISK ASSESSMENT:</b> <i>High; Aviation; Public in fire area; Hazard trees; Hazardous Materials.</i></p> <p><b>Needs:</b> TFLD-1; HEQB-1; FEL1</p>						
<b>7. Special Instructions:</b>						
<ul style="list-style-type: none"> <li>• Ensure communications with adjacent divisions and West Zone.</li> <li>• For urgent access through any construction delay on Hwy 36 near Dinsmore, contact Lou Robertson of Mercer Frazer Construction at 707-599-6372.</li> <li>• Be aware of soft shoulder on Van Duzen Rd.</li> <li>• All medical resources MUST check in with Eureka Communications once in place on assigned Divisions.</li> <li>• REMs available from Branch 21.</li> <li>• EMTF(t) Brian de la Cruz covering both DIV A1 &amp; DIV B1</li> <li>• EMTB Lisa Poncelet covering both DIV A1 &amp; DIV B1</li> </ul>						
<b>8. Division/Group Communication Summary</b>						
Function	Channel	RX Frequency N/W	RX Tone/NAC	TX Frequency N/W	TX Tone/NAC	Mode
COMMAND		SEE COMM PLAN				
<b>9. Prepared By (Resource Unit Leader)</b>			<b>Approved By (Planning Section Chief)</b>		<b>Date</b>	<b>Time</b>
KARI GROMATZKY / BRAD WITKIN			JASON BRAUNSTEIN		10/13/2020	2000

**Division/Group Assignment List (ICS 204 WF)**  
**Controlled Unclassified Information//Basic**

<b>1. Incident Name:</b>			<b>3.</b>			
AUGUST COMPLEX NORTHWEST ZONE			<b>Branch:</b>		<b>Division/Group:</b>	
<b>2. Operational Period:</b> 24 HRS NW					<b>STAGING</b>	
Date/Time From: 10/14/2020 0700	WED	Date/Time To: 10/15/2020 0700	THU			
<b>4. Operations Personnel</b>						
<b>OPERATIONS CHIEF</b>		JASON BUTLER 10/26 TYLER MONROE 10/26 (T)		<b>AIR OPS BRANCH DIRECTOR</b>		DON CLARK 10/25
<b>BRANCH DIRECTOR</b>				<b>DIVISION/GROUP SUPERVISOR</b>		
<b>5. Resources Assigned this Period</b>						
Strike Team / Task Force / Resource Designator	LWD	Leader	Number Persons	Drop Off PT./Time	Pick Up PT./Time	
C-180 HC2 TOM FERY FARM INC	10/27	SARAFIN GARCIA JR	20	MEADOWS/0700	MEADOWS/1900	
E-30010 DOZ3 C.C. STACKING	10/16	CRAIG	1	MEADOWS/0700	MEADOWS/1900	
E-70135 CHIP S&W DISASTER SUPPORT	10/27	RUSSELL PARTSCH	2	MEADOWS/0700	MEADOWS/1900	
E-112 WTS2 DBA DUSTBUSTERS	10/19	GREG HOLT	1	MEADOWS/0700	MEADOWS/1900	
E-720 WTS2 TENDER, WATER (SUPPORT)	10/20	AARON AARON	2	MEADOWS/0700	MEADOWS/1900	
E-476 WTS2 SANTAQUIN VFD - WT141	10/24	RUSTY ALGER	1	MEADOWS/0700	MEADOWS/1900	
E-30029 WTS1 JAKE LOVATO TRUCKING	10/16	NATHANEAL LOVATO	1	MEADOWS/0700	MEADOWS/1900	
<b>6. Control Operations/Work Assignments:</b>						
<b>7. Special Instructions:</b>						
<b>8. Division/Group Communication Summary</b>						
Function	Channel	RX Frequency N/W	RX Tone/NAC	TX Frequency N/W	TX Tone/NAC	Mode
COMMAND		SEE COMM PLAN				
<b>9. Prepared By (Resource Unit Leader)</b>			<b>Approved By (Planning Section Chief)</b>		<b>Date</b>	<b>Time</b>
KARI GROMATZKY / BRAD WITKIN			JASON BRAUNSTEIN		10/13/2020	2000

# FIRE BEHAVIOR FORECAST

FORECAST NUMBER: 54	TYPE OF FIRE: Wildland Fire
FIRE NAME: August Complex	OPERATIONAL PERIOD: Day/Night Shift, October 14, 2020
DATE ISSUED: October 13, 2020	TIME ISSUED: 2000
UNIT: Mendocino NF	SIGNED: /s/ Tobin Kelley FBAN

## INPUTS

**WEATHER SUMMARY:** Warming and drying will continue. Wind will increase and become gusty turning NE. Relative humidity be low during the day and night.

See attached Fire Weather Forecast.

## OUTPUTS

### FIRE BEHAVIOR

**GENERAL:** General increase in fire behavior. Expect stump holes and heavy duff to show more smoke and heat. Surface fire will pick up as fuels continue to dry and wind increases. Potential for torching and spotting as winds increase.

Fuel Conditions: Heavy fuels remain dry. Other fuels will continue to dry.

### SPECIFIC:

All Divisions: Expect smoldering, creeping and surface fire to increase with more sun and wind. Potential for torching trees to produce embers and short range spotting.

Increased heat will be seen across the fire, potential for more active surface fire and torching as fire moves under available canopy. Light winds will keep any potential spotting to very short range.

Main areas of concern are in Division A1 in the Bradburn Creek area and in Division C1 in the West Fork of Van Duesen River.

Fine fuels and brush on high energy aspects will become active with drying conditions. Light winds will limit fire spread,

**Night Shift:** Red flag kicks in about 2300 for increasing winds and low relative humidity. This could impact fire activity from ridges to drainages as downslope winds combine with N/NE winds. Potential for fire to increase in activity through the night.

### AIR OPERATIONS:

Aviation operations should continue to experience good flying conditions.

## SAFETY

High winds will affect not only fire behavior but snags too. Be aware of your surroundings as conditions change.

# AIR OPERATIONS SUMMARY

Prepared by: Chad Runyan

Prepared Date: 10/13/2020

Prepared Time: 1600

<b>1. INCIDENT NAME:</b> August Complex Northwest Zone	<b>2. OPS PERIOD DATE:</b> 10/14/2020	<b>START TIME:</b> 0700	<b>END TIME:</b> 1930	<b>Sunrise:</b> 0727	<b>Sunset Time:</b> 1836
<b>3. REMARKS:</b> SEE AND AVOID *NOTIFY ATGS/OPS/AIR OPS IMMEDIATELY OF ANY DRONE/UAS's SEEN IN FIRE AREA* Track all drop locations/number of drops/gallons dropped in Wilderness. All GPS data to be collected in DEGREES, MINUTES, DECIMAL MINUTES format. Avoid Aerial Application of retardant/foam/agent within 300' of waterways, report misapplication. CAUTION: POWERLINES, Multi Agency Airspace, PG&E Powerline Aircraft DIP SITES: No dipping out of Black Butte Creek  Kneeland Helibase 40° 43.1' x -123° 55.6' 2737'. Dinsmore MRB 40° 29.5' x -123° 35.9' 2375'		<b>4. Medevac:</b> California National Guard UH60 NVG/Hoist/24/7 Redding, CA  US Coast Guard HH-65 All Weather/NVG/Hoist/24/7 Eureka Air Station  Incident A/C N407MC BHT 407 Litter Kit/ALS 0800-1900 Kneeland Helibase		<b>5. TFR Notam:</b> August North 0/0314 Frequency: 124.375 TFR A#-30092  Adjoining TFRs: August South 0/0577 Frequency: 132.575	
Initial Attack Helicopters: N911VR Helitack/Bucket N804PJ Bucket Dispatch: SHF 530-226-2499 MNF 530-934-1159					


6. PERSONNEL		NAME	PHONE #	7. FREQUENCIES	AM	FM	8. FIXED-WING
AOBD	Don Clark	928-245-2539	Air Tactics FW (North)	166.950		As needed ordered by the ATGS	
AOBD(T)	Chad Runyan	218-343-9317	Air/Air TFR(North)	124.375			
ASGS	Mickey Smith	435-260-8521	AIR/AIR ROTOR	132.375		AIRATTACK: AA-50 (North Zone – East & West) HLCO: Will use available Type 3 Helicopter	
ASGS(T)	James Russell	406-223-6598	A/G Command A/G Tactical	171.8375 172.3500			
ATGS-Shared (NW/NE)	Darrin Yost	530-306-0963	DECK TOLC	168.350 172.1375		LEAD PLANES: As needed ordered by the ATGS TANKERS: As needed ordered by the ATGS	
HLCO-Shared (NW/NE)	Zane Brown	907-378-0587	CALCORD CA Air Ambulance	156.0750 Tone Rx/Tx 156.7		Helibase Trailer E-779 Dinsmore Water Tender E-70101	
Kneeland HEBM	Mike Shelp	530-306-5711	North Zone East A/G Tactical	170.5625			
			South Zone TFR	132.575		West Zone FM Air Tac: 173.7375	
			South Zone Air Tactics	166.1625			
			South Zone Rotor	133.275		West Zone Rotor: 132.575	
			South Zone A/G Command	168.3375		West Zone Air Briefing: 128.4250	
			South Zone A/G Tactical	167.5500		West Zone A/G North: CDF T25 159.2775 Rx/Tx Tone 192.8 West Zone A/G South: CDF T23 159.4500 Rx/Tx Tone 192.8	

## 9. HELICOPTERS

FAA N#	TY	MAKE/MODEL	BASE	START	READY	REMARKS	FAA N#	TY	MAKE/MODEL	BASE	START	READY	REMARKS
804PJ	1	UH-60 (A-265)	Kneeland	0700	0800	Bucket/IA	205DY	2	205 A1++ (A-30106)	Kneeland	0700	0800	Bucket/LL/Crew Rappel/IA
161KA	1	Kmax (A-30090)	Kneeland	0700	0800	Bucket	110NW	2	Bell UH-1H (A-30041)	Kneeland	0700	0800	Bucket/LL
357KA	1	Kmax (A-30079)	Kneeland	0700	0800	Bucket	838PA	3	AS-350 B3 (A-30093)	Kneeland	0700	0800	Bucket/LL/Recon
911VR (H-516)	2	Bell 212 HP (A-30011)	Kneeland	0700	0800	Bucket/LL/Crew	407MC	3	BHT-407 (A-280)	Kneeland	0700	0800	Bucket/LL/Recon/PSD/Litter Kit

# INCIDENT RADIO COMMUNICATIONS PLAN (ICS 205)

## Controlled Unclassified Information//Basic

<b>1. Incident Name:</b>		<b>2. Date/Time Prepared:</b>		<b>3. Operational Period:</b>						
NW AUGUST COMPLEX		Date: 10/13/2020 Time: 1900	Date/Time From: 10/14/2020 0700	Date/Time To: 10/15/2020 0700						
<b>4. Basic Radio Channel Use:</b>										
Zone Group	Ch #	Function	Channel Name/Trunked Radio System Talkgroup	Assignment	RX Freq	RX Tone/NAC	TX Freq	TX Tone/NAC	Mode (A, D, or M)	Remarks
	1	COMMAND	CMD 1	ALL DIVISIONS	170.9750	TONE 11 - 114.8	168.7000	TONE 11 - 114.8	A	LOCATED ON BLAKE MOUNTAIN
	2	COMMAND	CMD 2	ALL DIVISIONS	170.4500	TONE 11 - 114.8	168.1000	TONE 11 - 114.8	A	LOCATED ON BUCK MOUNTAIN
	3	COMMAND	CMD 3	ALL DIVISIONS	171.0875	TONE 11 - 114.8	164.0125	TONE 11 - 114.8	A	LOCATED ON HORSE RIDGE
	4	COMMAND	CMD 4	ALL DIVISIONS	170.6125	TONE 11 - 114.8	167.1875	TONE 11 - 114.8	A	LOCATED ON PICKETT PEAK
	5	COMMAND	CMD 5	ALL DIVISIONS	168.1375	TONE 11 - 114.8	162.9375	TONE 11 - 114.8	A	LOCATED ON HORSE MOUNTAIN
	6	TACTICAL	TAC 6	DIV B1	168.0500	TONE 11 - 114.8	168.0500	TONE 11 - 114.8	A	DIVISION ASSIGNMENT – BRAVO ONE
	7	TACTICAL	TAC 7	DIV C1	168.6000	TONE 11 - 114.8	168.6000	TONE 11 - 114.8	A	DIVISION ASSIGNMENT – CHARLIE ONE
	8	TACTICAL	TAC 8	DIV F1/G1	165.6750	TONE 11 - 114.8	165.6750	TONE 11 - 114.8	A	DIVISION ASSIGNMENT – FOXTROT ONE AND GOLF ONE
	9	TACTICAL	TAC 9	DIV D1/E1	168.2500	TONE 11 - 114.8	168.2500	TONE 11 - 114.8	A	DIVISION ASSIGNMENT – DELTA ONE AND ECHO ONE
	10	TACTICAL	TAC 10	DIV A1/NIGHT OPS	166.7250	TONE 11 - 114.8	166.7250	TONE 11 - 114.8	A	DIVISION ASSIGNMENT – ALPHA ONE AND NIGHT OPS
	11	TACTICAL	TAC 11	NW STRUCTURE	166.7750	TONE 11 - 114.8	166.7750	TONE 11 - 114.8	A	DIVISION ASSIGNMENT – NORTH WEST STRUCTURE
	12	TACTICAL	TAC 12	JOINT TAC	162.1875	TONE 11 - 114.8	162.1875	TONE 11 - 114.8	A	DIVISION ASSIGNMENT – JOINT TACTICAL
	13	AIR TO GROUND	A/G CMD	AIR TO GROUND COMMAND	171.8375	0.0	171.8375	0.0	A	AIR TO GROUND OPERATIONS
	14	AIR TO GROUND	A/G TAC	AIR TO GROUND TACTICAL	172.3500	0.0	172.3500	0.0	A	AIR TO GROUND OPERATIONS
	15	COMMAND	CALCORD	AIR AMBULANCE	156.0750	TONE 6 - 156.7	156.0750	TONE 6 - 156.7	A	MEDICAL - EMERGENCY ONLY
	16	AIR GUARD	AIR GRD	AIR GUARD	168.6250	0.0	168.6250	TONE 1 - 110.9	A	AIR GUARD - EMERGENCY ONLY
<b>5. Special Instructions:</b>										
<b>6. Prepared By</b> (Communications Unit Leader)				Name: BRANDON DIEMER				Signature: 		
ICS 205				IAP Page				Date/Time: 10/13/2020 1900		



# ICS 205 - INCIDENT RADIO COMMUNICATIONS PLAN

CONTROLLED UNCLASSIFIED INFORMATION//BASIC

<b>1. Incident Name:</b> August Complex West Zone GROUP/ZONE 14 / 53		<b>2. Date/Time Prepared</b> Date: 10/13/2020 Time: 1930		<b>3. Operational Period:</b> Date To: 10/15/20 Time To: 0700				
<b>4. Communications</b>								
Ch#	Function	Name	Assigned To	Rx Freq	Rx Tone	Tx Freq	Tx Tone	Notes
1								
2								
3								
4	COMMAND	CDF C8 T12	BR 7	151.4450	T8 - 103.5	159.3450	T12 -127.3	TONE 12 - LAUGHLIN RIDGE
5	COMMAND	CDF C8 T14	BR 7 / 9	151.4450	T8 - 103.5	159.3450	T14 - 151.4	TONE 14 - IRON PEAK
6	COMMAND	CDF C8 T15	BR 5, 7 / 9	151.4450	T8 - 103.5	159.3450	T15 - 162.2	TONE 15 - BIG SIGNAL PK
7	TACTICAL	CDF T31	COVELO FSR	159.3825	T16 - 192.8	159.3825	T16 - 192.8	
8	TACTICAL	CDF T32	DIV T	151.2425	T16 - 192.8	151.2425	T16 - 192.8	
9								
10	TACTICAL	VTAC12	DIV U / Y	154.4525	T6 - 156.7	154.4525	T6 - 156.7	
11	TACTICAL	VTAC13	UKIAH FSR	158.7375	T6 - 156.7	158.7375	T6 - 156.7	
12								
13								
14	AIR TO GROUND	CDF T23	BR 5, 7 / 9	159.4500	T16 - 192.8	159.4500	T16 - 192.8	A/G DIV T, U / Y
15	MEDICAL	CALCORD	ALL DIVS	156.0750	T6 - 156.7	156.0750	T6 - 156.7	
16	AIRGUARD	AIRGUARD	ALL DIVS	168.6250		168.6250	T1 - 110.9	EMERGENCY
17								
18								
19								
20	AIRGUARD	AIRGUARD	ALL DIVS	168.6250		168.6250	T1 - 110.9	EMERGENCY
<b>5. Special Instructions</b>						Operation on frequencies not assigned to the fire is illegal and is currently causing interference to other public safety agencies.		
<b>6. Prepared by (Communications Unit Leader): Name: Bernie Rapp</b>						Signature: _____		
<b>ICS 205 - CONTROLLED UNCLASSIFIED INFORMATION//BASIC</b>						Date/Time: 10/13/20 1930		

INCIDENT RADIO COMMUNICATIONS PLAN I-205		1. INCIDENT NAME		2. DATE/TIME PREPARED		3. OPERATIONAL PERIOD DATE/TIME					
		<b>August Complex South Zone</b>		10/13/2020 1630		10/14/2020 0700 to 10/15/2020 0700					
4. BASIC RADIO CHANNEL UTILIZATION											
Ch #	Function	Channel Name	Assignment	RX Freq	N/W	RX Tone/NAC	TX Freq	N/W	TX Tone/NAC	Mode Analog (A) Digital (D) Mixed (M)	Remarks
1	COMMAND	CMD 1	DIV J2/N2/O2	170.0000	N	136.5	166.6750	N	136.5	A	ST. JOHN MOUNTAIN
2	COMMAND	CMD 2	DIV D2/F2/J2/N2	170.4125	N	136.5	165.9625	N	136.5	A	ALDER SPRINGS
3	COMMAND	CMD 3	DIV D2/N/Q/S	170.6875	N	136.5	166.5750	N	136.5	A	ANTHONY PEAK
4	COMMAND	CMD 4	DIV N/Q/S	172.6750	N	136.5	163.0375	N	136.5	A	GRIZZLY FLAT
5	COMMAND	CMD 5	DIV N/G/T2/O2/R2	173.7500	N	136.5	163.8250	N	136.5	A	HULL MOUNTAIN
6	COMMAND	CMD 6	DIV Q N/G/T2/R2	170.0500	N	136.5	167.0750	N	136.5	A	BIG SIGNAL PEAK
7	TACTICAL	TAC 1	DIV D2/F2/J2 Q	168.0500	N	136.5	168.0500	N	136.5	A	DIV D2/F2/J2/Q
8	TACTICAL	TAC 2	DIV O2	168.2000	N	136.5	168.2000	N	136.5	A	DIV O2
9	TACTICAL	TAC 3	DIV N/N2	168.6000	N	136.5	168.6000	N	136.5	A	DIV N/N2
10	TACTICAL	TAC 4	DIV S/T2/G	168.2500	N	136.5	168.2500	N	136.5	A	DIV S/T2/G
11	TACTICAL	TAC 5	DIV R2	166.7250	N	136.5	166.7250	N	136.5	A	DIV R2
12	TACTICAL	TAC 6	Road Crew	166.7750	N	136.5	166.7750	N	136.5	A	ROAD CREW
13	A/G	A/G CMD	AIR COMMAND	168.3375	N		168.3375	N		A	AIR-GROUND COMMAND
14	A/G	A/G TAC	AIR TACTICAL	167.5500	N		167.5500	N		A	AIR-GROUND TACTICAL
15	MEDEVAC A/G	CALCORD	MEDICAL	156.0750	N	156.7	156.0750	N	156.7	A	AIR-GROUND MEDICAL
16	AIRGUARD	AIRGUARD	EMERGENCY	168.6250	N		168.6250	N	110.9	A	EMERGENCY ONLY
<b>5. Special Instructions:</b>		Use Human Repeaters As Necessary. All Command Repeaters Are Linked Together. August Complex (South Zone) Communications: 760-902-0037									
<b>6. I-205 Prepared By: Communications Unit Leader</b>		<b>Name:</b> Martin Johns				<b>Signature:</b>					

<b>INCIDENT RADIO COMMUNICATIONS PLAN I-205</b>				<b>1. INCIDENT NAME</b>		<b>2. DATE/TIME PREPARED</b>		<b>3. OPERATIONAL PERIOD DATE/TIME</b>			
				<b>AUGUST NORTHEAST ZONE</b>		10/13/2020 1800		10/14/2020 0700 TO 10/15/2020 0700			
<b>4. BASIC RADIO CHANNEL UTILIZATION</b>											
Ch #	Function	Channel Name	Assignment	RX Freq	NW	RX Tone/NAC	TX Freq	NW	TX Tone/NAC	Mode Analog (A) Digital (D) Mixed (M)	Remarks
1	COMMAND	CMD-1	ALL DIV	167.8375	N	146.2	164.3875	N	146.2	A	<b>TOMHEAD</b> , South East
2	COMMAND	CMD-2	ALL DIV	169.7500	N	146.2	167.1000	N	146.2	A	<b>YOLLA BOLLE</b> , South central
3	COMMAND	CMD-3	ALL DIV	173.0375	N	146.2	167.3250	N	146.2	A	<b>HORSE RIDGE</b> , North central
4	COMMAND	CMD-4	ALL DIV	172.9875	N	146.2	165.1500	N	146.2	A	<b>PICKETT PEAK</b> , North west
5	COMMAND	CMD-5	ALL DIV	169.5375	N	146.2	164.7125	N	146.2	A	<b>HAYFORK BOLLE</b> , North of Hayfork
6	COMMAND	CMD-6	ALL DIV	169.9625	N	146.2	165.5000	N	146.2	A	<b>KNOB PEAK</b> , South of Hayfork
7	COMMAND	CMD-7	ALL DIV	173.6500	N	146.2	171.0375	N	146.2	A	<b>LIMEDYKE MTN.</b> West of Hayfork
8	TACTICAL	TAC 8	CONT / DIV O	168.0500	N	146.2	168.0500	N	146.2	A	CONTINGENCY / DIV OSCAR
9	TACTICAL	TAC 9	DIV KILO	166.7250	N	146.2	166.7250	N	146.2	A	DIV KILO
10	TACTICAL	TAC 10	DIV M1 / M1 NIGHT	164.0000	N	146.2	164.0000	N	146.2	A	DIV MIKE 1 / MIKE 1 NIGHTS
11	TACTICAL	TAC 11	DIV Q1 / T1 SHARED	162.1875	N	114.8	162.1875	N	114.8	A	DIV QUEBEC1 / TANGO 1 SHARED
12	TACTICAL	TAC 12	DIV I1 / DIV I NIGHTS	168.4750	N	146.2	168.4750	N	146.2	A	DIV INDIA 1 / DIV INDIA 1 NIGHTS
13	AIR TO GROUND	A/G CMD	A/G CMD	171.8375	N	None	171.8375	N	None	A	HLCO/AIR ATTACK
14	AIR TO GROUND	A/G TAC	A/G TAC	170.5625	N	None	170.5625	N	None	A	TACTICAL AIRCRAFT
15	CALCORD	CALCORD	MEDIVAC A/G	156.0750	N	156.7	156.0750	N	156.7	A	MEDEVAC A/G
16	EMERGENCY	AIRGUARD	EMERGENCY	168.6250	N	None	168.6250	N	110.9	A	EMERGENCY A/G CONTACT
<b>5. Special Instructions:</b>											
<b>USE HUMAN REPEATERS WHERE NECESSARY</b>											
<b>6. I-205 Prepared By: Communications Unit Leader</b>						<b>Name:</b>			<b>Signature:</b>		
						<b>Greg Schetzle COM1(t)</b>					
<b>COMMS PHONE: (925) 817-9850</b>											

# HEALTH AND SAFETY MESSAGE

***SAFETY** starts with **YOU***

We are **ALL** accountable for **SAFE** behaviors  
For Day/Night Operations: October 14, 2020

INCIDENT: **August Complex**

TIME: DAY 0700/Night1900

## **Major Hazards and Risks:**

- **DRIVING:** Driving and traveling upon established roadways is one of the main hazards on the incident. Always maintain safe speeds when operating vehicles. Drive defensively, be aware of oncoming traffic on all roadways and fire area. Utilize roadside pull-outs if you have multiple vehicles following you. **SLOW DOWN** and **SHARE** the ROAD. Follow all road signs.
- **HAZARD TREES:** Look up, Look down, Look around for signs of fire weakened trees. Assess work areas for snags prior to working within area.

## Fire Order of the Day:

*Give clear instructions and insure they are understood.*

- **Task** = What is to be done
- **Purpose** = Why it is to be done
- **End State** = How it should look when done

**NEED MORE INFO????.....Check your IRPG, Page x (white pages)**

## **Human Factor Watch Outs**

Watching out for yourself, coworkers, subordinates and your boss is a primary responsibility for everyone involved in high risk activities. Watch outs are not just for the tactical environment. The Human Factor Watch Outs are designed to create an opportunity for you to take a tactical pause and re-evaluate your situation.

If any of the following occur:

- Your briefing was unclear.
- You are not getting answers to your questions.
- You are not getting clear acknowledgement of your message.
- You are encountering hazards that are not mentioned in your brief.
- Your team is not debriefing.
- Your tempo is too high to maintain command and control.

**Take moment to re-assess your situation.**

### **Safety Alert**

**Subject:** Fatigue and/or Distractions, and Speed = Dangerous Conditions

**Area of Concern:** Driving Related to Fires

**Distribution:** Suitable for All, Anyone Thinking About Driving When Fatigued

**Discussion:** Especially Relevant With Current Fire Situation

**Safety Concerns to Employees:** Making it Home in One Piece

There are many long days being worked. Some crews are about to time out.

- *Make sure you are getting your rest when you can! ...and sticking to work/rest guidelines.*

Fatigue can cause us to mentally stray from the driving task.

It only takes a second of distraction to lose control of our vehicle. The faster you are traveling, the faster you get in trouble.

- *Make sure you recognize when you are too tired to drive!*
- *Don't tough it out and put yourself and crew at risk!*
- *Slow down, take breaks, talk to your passengers.*
- *Be a Hero ... know your limits and stay out of trouble.*

## **Your Safety Team:**

Paul Gauchay, Rick Schuler

**Always think LCES.....**

**Discuss possible risks prior to engaging in work tasks.**

## 2020 COVID-19 Guidance

### LEADER'S INTENT:

- Incident responders have a **DUTY** to safeguard each other and the public we serve from hazards. It is through our **RESPECT** for everyone's health and safety that we follow these mitigations, and we rely on everyone's **INTEGRITY** to ensure that we do so and expect the same of others.
- All incident personnel are expected to conduct **self-screening** of their health on a daily basis. Individuals experiencing any of the symptoms should take precautions to self-isolate and immediately report symptoms to your supervisor and to the IMT's Medical Officer or MEDL for assessment.
- All incident personnel will adhere to the **Module of One concept** to the extent practical.
- All incident personnel and visitors **will** wear **cloth face coverings** when six feet of social distancing cannot be maintained with others outside of their Module of One.
- All incident personnel and visitors are **required** to wear **cloth face coverings** when attending briefings or meetings in common use areas at ICP and camps.
- All incident personnel and visitors **will** wear **cloth face coverings** whenever they enter an enclosed incident facility, such as yurt, tent, building, restroom facility, or other common-use areas regardless of proximity to other people.

### ALL RESOURCES (IMT Members, Single Resource, Operational & Support resources):

- Each resource should arrive at the incident "self-sufficient" for 72 hours, including food, water, sanitizer or wipes, batteries, etc.

### REMOTE CHECK-IN, FINANCE, and DEMOBILIZATION

- Click on the QR code (or webpage via URL) to access all on-line forms for Check-in, Finance, and Dmob.
- If unable to access or use the online forms, or for additional assistance, use the following phone numbers to arrange an in-person visit:
  - Check-in: 916-539-6748 and [2020.augustcomplex.resources@firenet.gov](mailto:2020.augustcomplex.resources@firenet.gov)
  - Finance: 916-591-9006 and [2020.augustcompex.finance@firenet.gov](mailto:2020.augustcompex.finance@firenet.gov)
  - Dmob: 925-588-6089 and [2020.augustcomplex.dmob@firenet.gov](mailto:2020.augustcomplex.dmob@firenet.gov)

Electronic copies of your resource order, red cards, AD paperwork, VIPR contract can be provided via email.

### ICP AND CAMPS

- Access into ICP and some base camp facilities may be restricted to essential personnel only, i.e. module supervisors and trainees.
- To promote isolation and social distancing, operational resources will be assigned to camps and spike camps dispersed on the incident.
- Food will be individually packaged and delivered to drop points for distribution. Special dietary needs should be reported to your line supervisor.
- Daily operational briefings will be conducted via radio or virtually. Only supervisors and trainees should attend in-person briefings.

## 2020 COVID-19 Guidance

### WILDLAND FIRE COVID-19 SCREENING TOOL

---

Today or in the past 24 hours, have you had any of the following symptoms<sup>1</sup>?

Symptom
Cough more than expected?
Shortness of breath or difficulty breathing?
Fever? Chills?
Muscle pain, outside your normal for firefighting?
Sore throat?
New loss of taste or smell?
Fatigue, outside your normal for firefighting?
Headache, outside your normal for firefighting?
Congestion or runny nose, outside your normal for firefighting?
Nausea or vomiting
Diarrhea
<i>* Take temperature with no-touch thermometer, if available *</i>

#### Instructions for Screening

Item	What to Do
<p>*Supervisors should check in with resources multiple times a day (e.g. morning, lunch and after shift) to ensure no symptoms have developed.</p>	<p><b>Call COVID -19 Coordinator</b></p> <p>715-896-1116</p>
<p>If resource has a cough that is more than expected, shortness of breath or difficulty breathing, or any other symptoms listed. Do not announce, escort symptomatic individual to an isolated area and contact COVID-19 Coordinator.</p>	

<sup>1</sup> Symptoms of Coronavirus

<https://www.cdc.gov/coronavirus/2019-ncov/symptoms-testing/symptoms.html>

## August Complex North Zone - Phone List

<b>Command Staff</b>			<b>Logistics Staff</b>		
ICT1	Evans Kuo	208-866-8548	LSC1	Mike Dettori	
Deputy ICT1	Sam Hicks	775-453-8188	LSC1(T)	Jeff Nauman	208-681-5701
LOFR	Jeremy Robertson	435-994-1947	COML	Brandon Diemer	208-841-8329
SOF1	Paul Gauchay	801-361-6448	SUPL	Rob Hamilton	435-633-3939
MEDL-Covid	Kaili McCray	208-830-7842	FACL	Clay Stewart	435-899-9479
MEDL	Tyla Northrup	435-979-5285	FACL	Dave Barfuss	435-979-1500
PIO1	Kathy Jo Pollock	801-558-8016	GSUL	Ken Shurtz	435-632-5747
PIO1 (T)	Kim Osborn	801-710-3664			
HRSP	Sherry Neal	801-791-0044			
<b>Operation Staff</b>			<b>Communications Unit</b>		
OSC1 Planning	John Kennedy	775-750-5648	Communications	916-799-2496	
OSC1 Planning (T)	Brett Waters	702-279-5288	Safety Firstnet	916-589-7792	
OSC1 Field	Jason Butler	575-519-2020	<b>Ordering Staff</b>		
OSC1 Field (T)	Tyler Monroe	435-979-4409	<a href="mailto:2020.AugustComplex.ordering@firenet.gov">2020.AugustComplex.ordering@firenet.gov</a>		
DIV	Justin Cutler	775-315-6113	ORDM	Kristi Reece	425-239-2209
DIV	Matt Call	801-824-3707	ORDM	Cynthia Rogers	575-635-5555
AOBD	Don Clark	928-245-2539	<b>Plans Staff</b>		
AOBD (T)	Chad Runyan	218-343-9317	PSC1	John Noneman	208-859-8739
ASGS	Micky Smith	435-260-8521	PSC1	Jason Braunstein	434-249-9915
			PSC1	Brian Eldredge	208-869-6362
			PSC1	Trent Marty	608-400-7840
			RESL	Kari Gromatzky	505-550-6349
			SITL	Jennifer Stevens	208-731-2914
			IMET	Mike Ottenweller	907-266-5105
			FBAN	Tobin Kelley	307-413-2028
			DMOB	Rhonda Toronto	925-588-6089
<b>Check in</b>					
2020.AugustComplex.Resources@firenet.gov					
916-539-6748					
<b>Documentation</b>					
2020.AugustComplex.plans@firenet.gov					
<b>Finance</b>			<b>Demobilization</b>		
2020.AugustComplex.finance@firenet.gov			2020.AugustComplex.dmob@firenet.gov		
	Personnel	916-591-9006	925-588-6089		
	Equipment	409-739-3289			

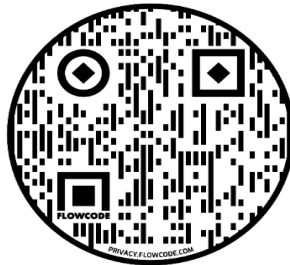
# Finance Message

**NW ZONE Finance Email: [2020.augustcomplex.finance@firenet.gov](mailto:2020.augustcomplex.finance@firenet.gov)**

**Finance Contact Number: 916-591-9006**

**\*\*\* P5NFP421 starting 10/1/20 in your Time Code System \*\*\***

**Please Click the QR code below for the following fillable Finance forms:**



## TIME COLLECTION:

- ◆ REMINDER: PLEASE CHANGE P CODE TO **P5NFP421** STARTING 10/1/20 IN YOUR AGENCY TIME CODING SYSTEM
- ◆ PLEASE MAKE EVERY EFFORT TO TURN IN ALL CTR's AND SHIFT TICKETS DAILY.
- ◆ IF AT ALL POSSIBLE, PLEASE BE CONSISTANT WITH THE METHOD IN WHICH YOU SUBMIT YOUR DOCS
- ◆ A JUSTIFICATION IN REMARKS IS REQUIRED FOR FEDERAL EMPLOYEES CLAIMING HAZARD PAY ON CTRs
- ◆ PLEASE INCLUDE YOUR RESOURCE ORDER # ON ALL DOCUMENTATION SUBMITTED, INCLUDING RECEIPTS
- ◆ IF EQUIPMENT HAS BEEN ASSIGNED MORE THAN 14 DAYS, FEEL FREE TO CONTACT US TO REQUEST AN INTERIM/PROGRESS INVOICE PAYMENT.

## LOCATION FOR TIME COLLECTION:

Location	Place for Collection
TLC Base Camp Meadows Base Camp	Tara will be collecting time and taking it to ICP. A time box will be in the Finance room behind the briefing area at TLC.
All other locations	Please submit time electronically.

## FINANCE CHECK IN:

- ◆ PLEASE ENSURE THE BELOW DOCUMENTS ARE EMAILED OR DELIVERED TO FINANCE

Agency Equipment/Crews:	Overhead:	Contract Equipment/Contract Crews:	Cooperator:
<ul style="list-style-type: none"> <li>• Manifest</li> <li>• Resource Order</li> <li>• CTR's</li> </ul>	<ul style="list-style-type: none"> <li>• Resource Order</li> <li>• AD Hire Form (If an AD)</li> <li>• CTR's</li> </ul>	<ul style="list-style-type: none"> <li>• Agreement/Manifest</li> <li>• Resource Order</li> <li>• Shift Ticket</li> <li>• Inspection Forms</li> </ul>	<ul style="list-style-type: none"> <li>• Cooperative Agreement</li> <li>• Resource Order</li> <li>• Shift Ticket</li> <li>• Inspection Forms</li> </ul>

**PERSONNEL PHONE # 916-591-9006**

**EQUIPMENT PHONE # 409-739-3298**



## CHECK-IN PROCEDURE

Virtual Check-In:

1. Scan the QR code and COMPLETE the form in its entirety.
2. Email your crew manifest to: [2020.AugustComplex.Resources@firenet.gov](mailto:2020.AugustComplex.Resources@firenet.gov)
3. Contact FINANCE at 916-591-9006

If you are unable to complete CHECK-IN online, please come to Plans located at Meadows Base Camp or call 916-539-6748. Thank you!



Meadows Base Camp CHECK-IN hours: 0700 – 2100

---

## DMOB PROCEDURE

Virtual DMOB:

1. Scan the QR code and COMPLETE the form in its entirety.
2. Email your completed form to: [2020.AugustComplex.dmob@firenet.gov](mailto:2020.AugustComplex.dmob@firenet.gov)

If you are unable to complete DMOB online, please come to Plans located at Meadows Base Camp or call DMOB at 925-588-6089. Thank you!



Meadows Base Camp DMOB hours: 0700 – 2100

---



## Human Resource Specialist on the incident!!!



*My name is Sherry Neal and I am your Human Resource Specialist.*

As the human resource specialist, I am available to all incident personnel to provide information and contact information regarding issues related to Anti-Harassment or Civil Rights.

If you are aware of harassment, or any other form of inappropriate behavior, you have the right to do something about it. If there is any other information you need or if I can be of any assistance, please don't hesitate to call and ask me for help.

*Sherry Neal, HSRP 801-791-0044*

# QR Codes – All Complex



Northeast Zone IAPs



Northwest Zone IAPs



Northeast Zone Maps



Northwest Zone Maps



South Zone Maps and IAP



West Zone Maps and IAP

**October 14th 2020****EQUIPMENT**

E-30618	0800	(WTT2)	NW PIERCE FIRE
E-30619	0800	(WTS3)	NW LOOMIS FIRE CONTROL
E-30699	0800	(WTT2)	NW PIERCE FIRE 5
E-30718	0800	(ENG6)	NW IASHO 4602
E-30374	0900	(DOZ2)	JOHN BOAK -2
E-30405	0930	(DOZ2)	JOHN BOAK #4
E-30407	1000	(DOZ1)	NW ADAMS
E-30710	1000	(AMBU)	NW EMERGENCY AMBULANCE

**OVERHEAD**

O-30504	0700	(SEC1)	NW PINO, ORLANDO
O-30608	0700	(TFLD)	NW RINTELEN, TERRA
O-30691	0700	(AOBD)	NW RUNYAN, CHAD
O-30350	0800	(HMGB)	CRAVEN, JAMIE
O-30565	0800	(FMOD)	NW ATHERLY CONTRACTING
O-1226.64	0800	(RADO)	NW REGAN, KELLY
O-30620	0830	(HEQB)	IRWIN, CHRISTOPHER
O-30582	0830	(SECM)	MARTINCIC, SILVESTER
O-30363	0900	(SECG)	GAGE, TED
O-30109	1000	(REAF)	NW ANDERSON, GALEN
O-30605	1200	(TFLD)	NW MUCK, MICHAEL
O-1277	1600	(GSUL)	NW POST, MICHAEL
O-30340	1600	(TFLD)	NW STAPLETON, TOBY

**October 15th 2020****CREWS**

C-30111	0800	(HC2)	NW PONDEROSA
---------	------	-------	--------------

**EQUIPMENT**

E-30032	0700	(WTS2)	NW RLA HOLDINGS
E-30751	0700	(ENG6)	NW SMOKE HOUND
E-695	0800	(ENG6)	NW LNF - MISSOULA - E632
E-30507	0800	(DOZ2)	SOUTH FORK MOUNTAIN TIMBER
E-30606	0800	(WTT1)	NW SOUTHWESTERN WILDFIRE
E-30621	0900	(FEL1)	NW ENGLE
E-30705	1000	(ENG3)	NW MDF 46
E-70104	1000	(ENG3)	NW SOUTHERN TRINITY VFD
E-30019	1100	(DZS3)	HELLGATE EQUIP
E-30079	1100	(MAST)	LEPAGE

**OVERHEAD**

O-30557	0700	(BCMG)	NW KAISER, LESTER
O-30564	0700	(FMOD)	NW PAYETTE TREE SERVICE
O-30692	0800	(PIO1)	ACOSTA, JOSE
O-30639	0800	(FMOD)	NW BURKE TIMBER FALLING -
O-30580	0800	(BCMG)	NW MIERENDORF, BRETT
O-30597	0800	(DIVS)	SAUTER, TIMOTHY
O-1271	0830	(SCKN)	KELTON, MARCIE
O-30559	0830	(FMOD)	SCHOLL
O-1288	0900	(HRSP)	PALMER, SCOTT
O-30621	0900	(HEQB)	WHEELER, KEITH
O-30399	0930	(HMGB)	MASON, JOHN
O-30710	0930	(DIVS)	PUCKETT, MATTHEW
O-1285	1000	(INCM)	NW CORBIN, DAVID
O-30596	1500	(PIOF)	NOEL, CHRISTOPHER
O-30609	1600	(TFLD)	NW OLDROYD, JEREMY
O-1327.82	1800	(HRSP)	SANDOVAL SR, LARRY

**October 15th 2020****OVERHEAD**

O-1226.29	0600	(ORDM)	WOLT, MICHAEL
O-1226.36	1800	(PSC2)	MARTY, TRENTEN

**INCIDENT  
LINE SUPPLY ORDER FORM  
(OSC/Division Supervisors only)**

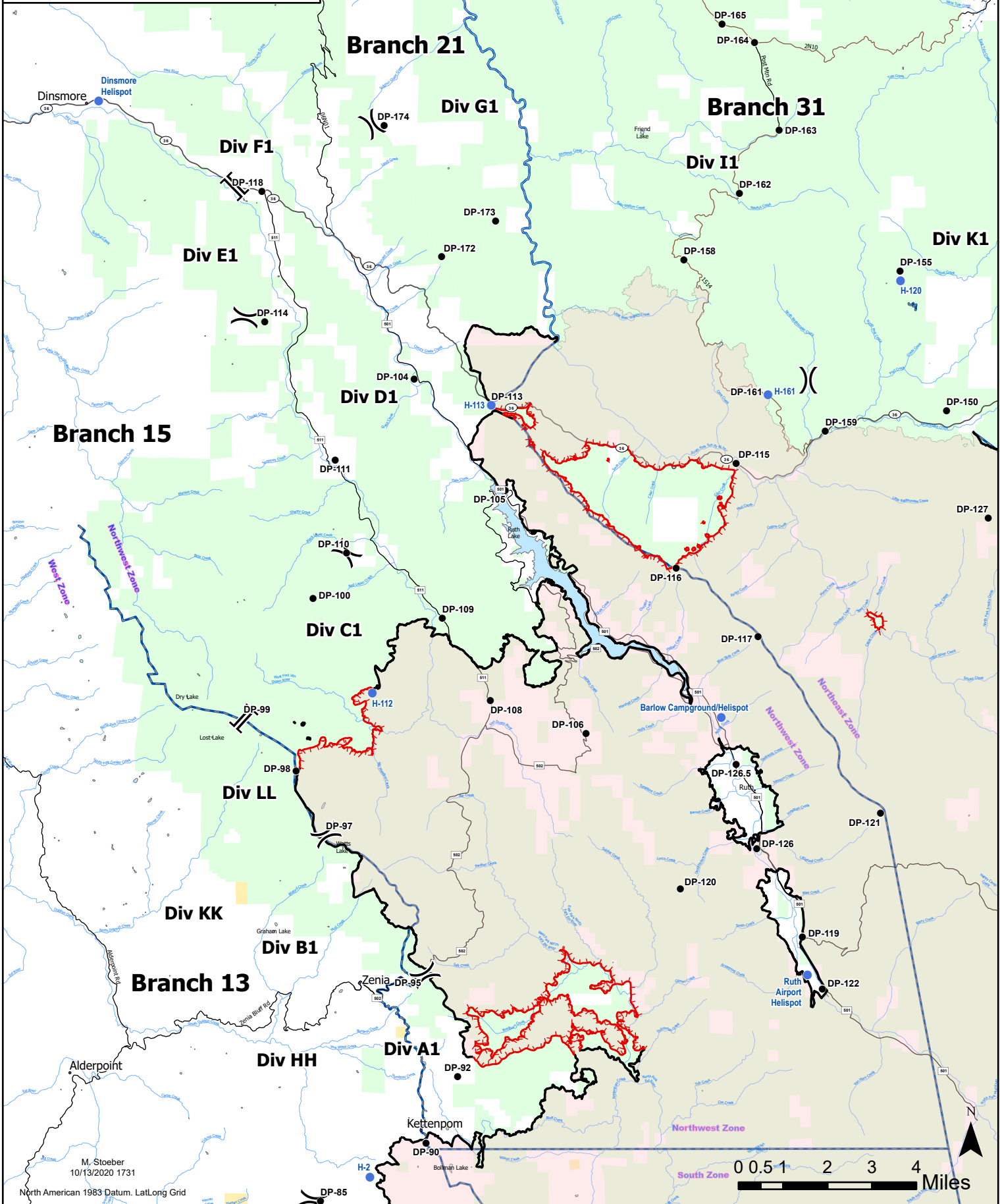
<b>Date &amp; Time Order Was Placed</b>	<b>Order Reference # (Div + #)</b>	<b>Mode of Delivery (Ground/Helo/Pickup @)</b>	<b>Location for Delivery (Division/LZ/DP Lat/Long)</b>
<b>DATE:</b>		(Circle one) <b>GROUND SUPPORT</b>	
<b>TIME:</b>		<b>HELICOPTER</b> (Include Elevation)	
		<b>TO BE PICKED UP BY @</b>	
<b>DATE NEEDED:</b>	<b>Time Needed:</b>	<b>Ground Contact:</b>	

<b>Order received in COMMUNICATIONS by:</b>	Name:	Time:
<b>Order received in SUPPLY by:</b>	Name:	Time:
<b>Order received in FOOD UNIT by:</b>	Name:	Time:
<b>Order received in GROUND SUPPORT by:</b>	Name:	Time:
<b>Order received in HELIBASE by:</b>	Name:	Time:
<b>Order delivered/ shipped to final location by:</b>	Name:	Time:

#	QUANTITY	ITEM	SHIPPED	PENDING	#	QUANTITY	ITEM	SHIPPED	PENDING
1		Breakfast-Meals			31		Lightweight Pump Kit		
2		Lunch-Meals			32		Hose-1 1/2" - ft		
3		Dinner-Meals			33		Hose-1" - ft		
4		MRE's(#of Cases) 12/cs			34		Hose-3/4" - ft		
5		Cubies of Water - ea			35		Reducer-1 1/2" X 1" - ea		
6		Bottled Water-Case			36		Reducer-1" X 3/4" -ea		
7		Gatorade-Case			37		Gated "Y"-1 1/2" - ea		
8		Batteries-AA/box 24 - ea			38		Gated "Y"-1" - ea		
9		Batteries-AAA/C/D - ea			39		Shut off valve 3/4" - ea		
10		Fuel-Unleaded-Gallons			40		In-Line Tee 1 1/2" X 1" - ea		
11		Fuel-Diesel-Gallons			41		Nozzle- 1 1/2" - ea		
12		Fuel-Drip Torch(60/40 mix) gals			42		Nozzle- 1" - ea		
13		Bar oil-QTs/Gallons			43		Nozzle 3/4" - ea		
14		2 cycle oil-(1/gallon)			44		First Aid Kit-20 man - ea		
15		Sleeping Bags-25 degree			45		Chainsaw Kit - ea		
16		Sleeping Bags-40 degree			46		DIV Pump Kit (next page) - ea		
17		Plastic-roll / sqft			47		DIV Hose lay Kit (next page) - ea		
18		Parachute Cord-roll/ft							
19		Shovels - ea.							
20		Pulaski - ea.					MISC. Please list below		
21		Combi - ea.							
22		McLeod - ea.							
23		Fussee - case							
24		Drip Torch-Full/Empty							
25		Backpack Pump-Full/Empty							
26		Slingable Blivet-Suppression							
27		Slingable Blivet-Drinking					Accountable Property #'s		
28		Folding Tank 1000/1500 gals							
29		Pumpkin 1400/3000/6000 gals							
30		Mark III Pump Kit							

**IAP**  
**August Complex Northwest Zone**  
**CA-MNF-000753**  
**Oct. 14, 2020**

• Communities	⎸ Division Break	▬ Contained Line	▬ County Road
● Drop Point	⎮ Branch Break	▬ Uncontrolled Fire Edge	▬ Forest Road
● Helispot		▬ State Road	▬ Zone Break



M. Stoeber  
 10/13/2020 1731  
 North American 1983 Datum, Lat/Long Grid



# MEDICAL PLAN (ICS 206 WF)

Controlled Unclassified Information//Basic

1. Incident/Project Name				2. Operational Period					
August Complex North West Zone				Date: Oct 14-15, 2020 Time: 07:00 to 07:00					
3. Ambulance Services									
Name		Complete Address		Frequency		Advanced Life Support			
						Yes	No		
Frontline EMS 101		Branch 15		Command or Tac		X			
Medic 102 Yarnell		Branch 13		Command or Tac		X			
Mt Medics AMB 8		Div A1/C1/E1/G1 Structure (Nights)		Command or Tac		X			
Star 6 Amb		Branch 21		Command or Tac			X		
4. Air Ambulance Services									
Name		Location		Type of Aircraft & Capability					
Reach Air Medical		Redding		24HR/Night Vision/VFR, ALS (Rotor-Wing)					
PHI 43 Air Medical		Redding		24HR/Night Vision/VFR, ALS (Rotor-Wing)					
National Guard		Redding		24HR/Hoist/Night Vision, ALS					
CHP		Redding		24HR/Hoist/Night Vision, ALS					
5. Medical Aid Stations				Advanced Life Support (ALS)					
				Yes	No				
Frontline Medical		Meadows Spike		X					
6. Hospitals									
Name/Level of Care		DD° MM.MMM' N - Lat DD° MM.MMM' W - Long		Travel Time		Helipad		Address	
				Ground	Air	Yes No			
UC Davis Medical Center Level 1 Trauma & Burn Center		Lat: 38°33.28'N		5 hrs 45 mins	65 mins	(916)734-3790	X		2315 Stockton Blvd. Sacramento, CA
		Long: 121°27.35'W							
		VHF: TX/RX 156.075							
Mercy Medical Center Level 2 Trauma		Lat: 40°34.32'N		3 hrs 15 mins	60 mins	(530)225-7201	X		2175 Rosaline Ave. Redding, CA
		Long: 122°23.17'W							
		VHF: TX/RX 156.075							
Saint Elizabeth Community Hospital Level 3 Trauma		Lat: 40°08.95'N		3 hrs 40 mins	65 mins	(530)529-8300	X		2550 Sister Mary Columba Dr. Red Bluff, CA
		Long: 122°13.17'W							
		VHF: TX/RX 156.075							
St. Joseph Health Level 3 Trauma		Lat: 40°47.03'N		1 hr 15 mins	55 mins	(707)445-8121	X		2700 Dolbeer St. Eureka, CA
		Long: 124°08.80'W							
		VHF: TX/RX 156.075							
7. Division/ Branch/ Group		Area Location Capability							
Div G-1, F-1		EMS Responders & Capability:				AMB STAR 6 (BLS), EMPF Silvestri, EMTF Mines, EMTF Bailey, EMTF Christy			
		Equipment Available:				BLS Transport, ALS Equipment, BLS Equipment			
Div C-1, D/E-1		EMS Responders & Capability:				AMB 101(ALS), REM 1, EMPF Wilson, EMTF Roberts, EMTF Africano			
		Equipment Available:				ALS Transport, Tech Rescue, ALS Equipment, BLS Equipment			
Div A-1, B-1		EMS Responders & Capability:				AMB 102 (ALS), EMPF Smith, IMSM Poncelot, EMTF Ryan, EMTF DeLaCruz			
		Equipment Available:				ALS Transport/Equipment			
Nights		EMS Responders & Capability:				AMB Medic 8 (ALS)			
		Equipment Available:				ALS Transport/Equipment			
Meadows Spike		EMS Responders & Capability:				Frontline Medical, Howell MEDL, Widner MEDL-t			
		Equipment Available:				ALS/BLS			
8. Prepared By (Medical Unit Leader)			9. Date/Time		10. Reviewed By (Safety Officer)			11. Date/Time	
Shaun Kinney MEDL-t, Tyla Northrup MEDL			10/13/2020		Paul Gauchay			10/13/2020	

# MEDICAL PLAN (ICS 206 WF)

Controlled Unclassified Information//Basic

Medical Incident Report					
<p>FOR A NON-EMERGENCY INCIDENT, WORK THROUGH CHAIN OF COMMAND TO REPORT AND TRANSPORT INJURED PERSONNEL AS NECESSARY.</p> <p>FOR A MEDICAL EMERGENCY: IDENTIFY ON SCENE INCIDENT COMMANDER BY NAME AND POSITION AND ANNOUNCE</p> <p><b>"MEDICAL EMERGENCY"</b> TO INITIATE RESPONSE FROM ICP COMMUNICATIONS.</p>					
<p><b>Use the following items to communicate situation to ICP COMMUNICATIONS.</b></p> <p><b>1. CONTACT ICP COMMUNICATIONS:</b> (Verify correct frequency prior to starting report)  <i>Ex: "Communications, Div. Alpha. Stand-by for Emergency Traffic."</i></p> <p><b>2. INCIDENT STATUS:</b> Provide incident summary (including number of patients) and command structure.  <i>Ex: "ICP Communications, I have a Red priority patient, unconscious, struck by a falling tree. Requesting air ambulance to Forest Road 1 at (Lat./Long.) This will be the Trout Meadow Medical, IC is TFLD Jones. EMT Smith is providing medical care."</i></p>					
Severity of Emergency / Transport Priority	<input type="checkbox"/> <b>RED / PRIORITY 1 Life or limb threatening injury or illness. Evacuation need is IMMEDIATE</b> <i>Ex: Unconscious, difficulty breathing, bleeding severely, 2° – 3° burns more than 4 palm sizes, heat stroke, disoriented.</i> <input type="checkbox"/> <b>YELLOW / PRIORITY 2 Serious Injury or illness. Evacuation may be DELAYED if necessary.</b> <i>Ex: Significant trauma, unable to walk, 2° – 3° burns not more than 1-3 palm sizes.</i> <input type="checkbox"/> <b>GREEN / PRIORITY 3 Minor Injury or illness. Non-Emergency transport</b> <i>Ex: Sprains, strains, minor heat-related illness.</i>				
Nature of Injury or Illness & Mechanism of Injury			<i>Brief Summary of Injury or Illness (Ex: Unconscious, Struck by Falling Tree)</i>		
Transport Request			<i>Air Ambulance / Short Haul/Hoist Ground Ambulance / Other</i>		
Patient Location			<i>Descriptive Location &amp; Lat. / Long. (WGS84)</i>		
Incident Name			<i>Geographic Name + "Medical" (Ex: Trout Meadow Medical)</i>		
On-Scene Incident Commander			<i>Name of on-scene IC of Incident within an Incident (Ex: TFLD Jones)</i>		
Patient Care			<i>Name of Care Provider (Ex: EMT Smith)</i>		
<b>3. INITIAL PATIENT ASSESSMENT:</b> Complete this section for each patient as applicable (start with the most severe patient)					
Patient Assessment: <span style="background-color: yellow;">See IRPG PAGE 106</span>					
Treatment:					
<b>4. TRANSPORT PLAN:</b>					
Evacuation Location (if different): (Descriptive Location (drop point, intersection, etc.) or Lat. / Long.) Patient's ETA to Evacuation Location:					
Helispot / Extraction Site Size and Hazards:					
<b>5. ADDITIONAL RESOURCES / EQUIPMENT NEEDS:</b>					
<i>Example: Paramedic/EMT, Crews, Immobilization Devices, AED, Oxygen, Trauma Bag, IV/Fluid(s), Splints, Rope rescue, Wheeled litter, HAZMAT, Extraction</i>					
<b>6. COMMUNICATIONS: Identify State Air/Ground EMS Frequencies and Hospital Contacts as applicable</b>					
Function	Channel Name/Number	Receive (RX)	Tone/NAC *	Transmit (TX)	Tone/NAC *
COMMAND					
AIR-TO-GRND					
TACTICAL					
<b>7. CONTINGENCY:</b> Considerations: If primary options fail, what actions can be implemented in conjunction with primary evacuation method? Be thinking ahead.					
<b>8. ADDITIONAL INFORMATION:</b> Updates/Changes, etc.					
<b>9. REMEMBER: Confirm ETA's of resources ordered. Act according to your level of training. Be Alert. Keep Calm. Think Clearly. Act Decisively.</b>					