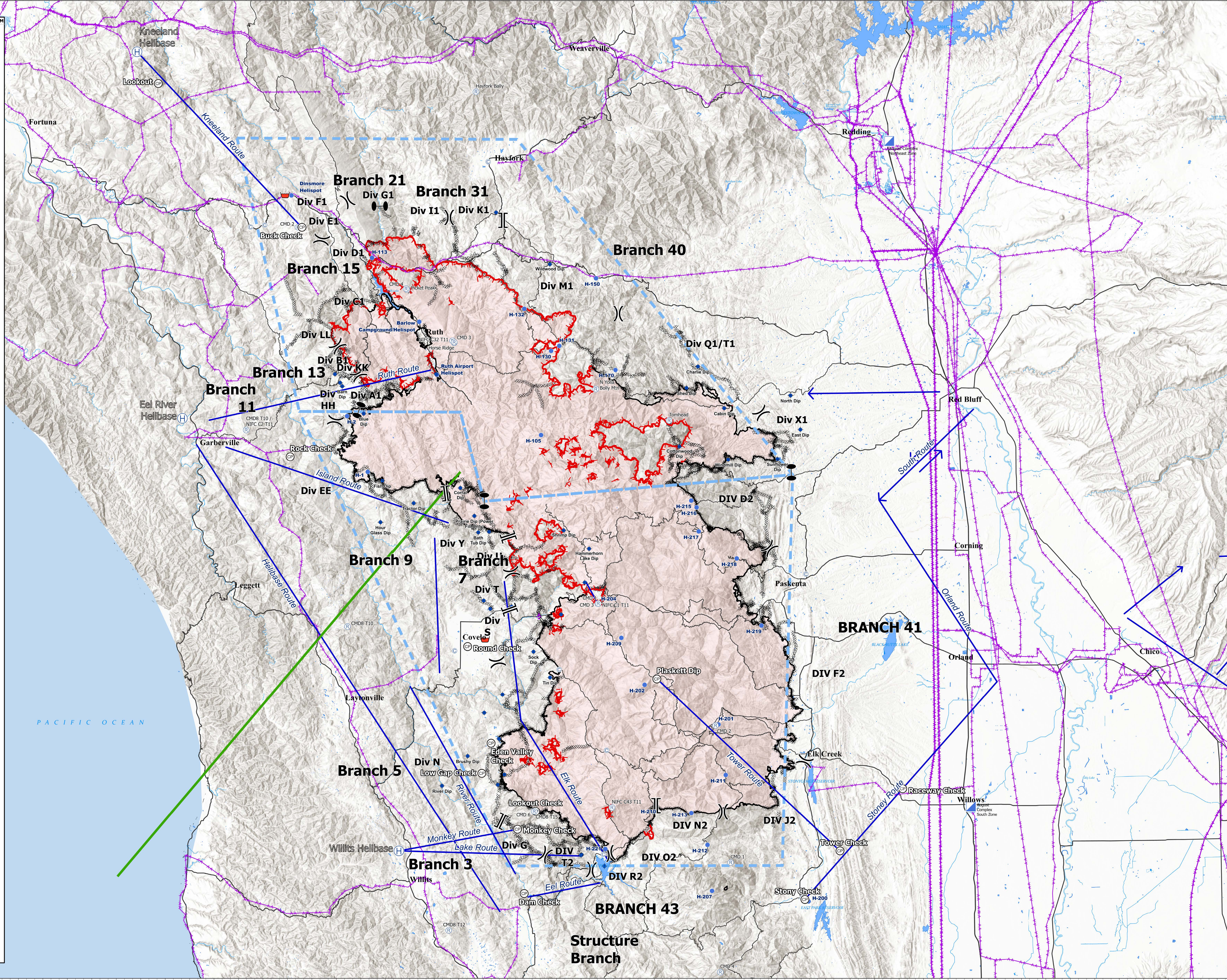
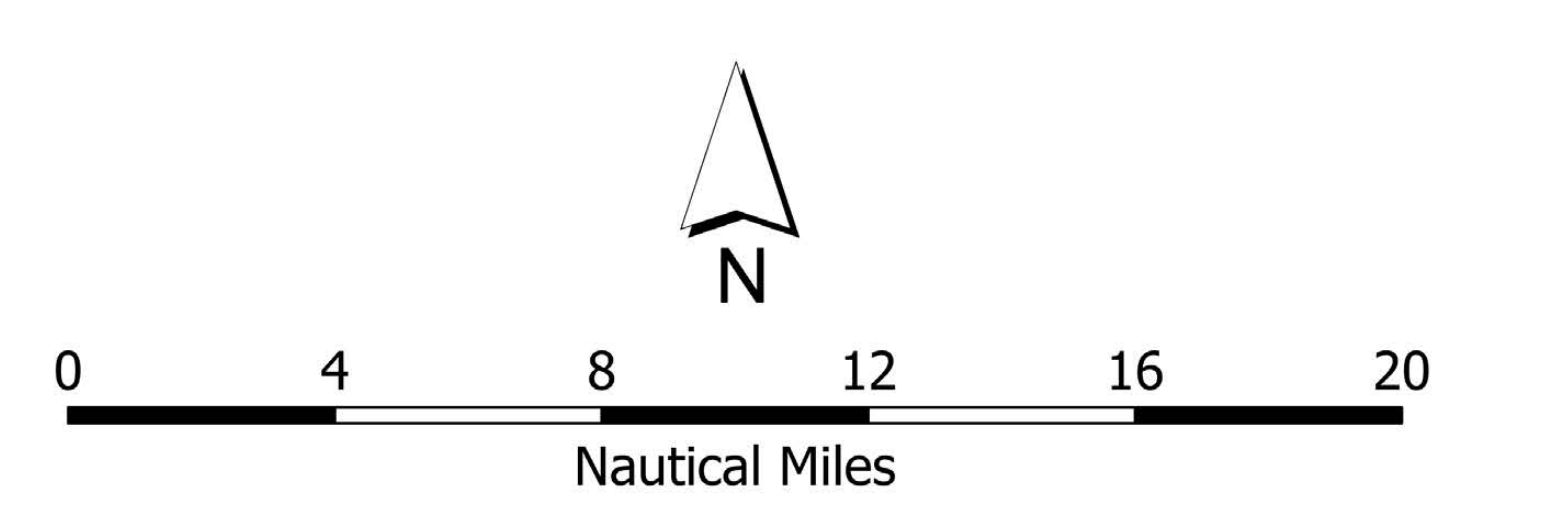


FeatureCategory	Label	LatWGS84_DDM	LongWGS84_DDM
Camp	Base Camp - Stony Ford	39° 36.777' N	122° 56.851' W
Camp	Covelo Camp	39° 22.668' N	122° 32.809' W
Camp	Eel River Camp	39° 46.256' N	123° 15.620' W
Camp	Gravelly Spike	40° 8.378' N	123° 49.416' W
Camp	Hayfork Spike	39° 26.861' N	122° 57.246' W
Camp	Meadows Spike	40° 26.541' N	123° 11.638' W
Camp	Paskenta Spike	39° 53.522' N	122° 32.163' W
Camp	Ridge/Poison Spike Camp	39° 44.485' N	123° 02.708' W
Camp	TLC Spike	40° 26.743' N	123° 39.460' W
Dip Site	Airport Dip	40° 12.613' N	123° 18.016' W
Dip Site	Anthony Dip	39° 49.728' N	122° 02.468' W
Dip Site	Bain Dip	40° 11.431' N	123° 14.953' W
Dip Site	Barns Dip	39° 26.781' N	123° 0.024' W
Dip Site	Bath Tub Dip	39° 57.547' N	123° 12.727' W
Dip Site	Blue Dip	40° 8.827' N	123° 26.992' W
Dip Site	Brushy Dip	39° 36.217' N	123° 13.969' W
Dip Site	Cabin Dip	40° 09.370' N	122° 42.200' W
Dip Site	Charlie Dip	40° 13.340' N	122° 42.450' W
Dip Site	Carroll Dip	40° 13.722' N	122° 41.565' W
Dip Site	Cottonwood Dip	40° 05.740' N	122° 47.780' W
Dip Site	East Dip	40° 07.310' N	122° 32.760' W
Dip Site	Faraway Dip	39° 26.820' N	122° 59.923' W
Dip Site	Fish Dip	40° 2.430' N	123° 24.640' W
Dip Site	Greenhouse Dip	39° 50.475' N	123° 8.579' W
Dip Site	Hammerhorn Lake Dip	39° 56.000' N	122° 59.001' W
Dip Site	Horsehoe Dip	39° 34.464' N	122° 44.456' W
Dip Site	Hour Glass Dip	39° 38.480' N	123° 34.880' W
Dip Site	Howard's Lake Dip	39° 52.768' N	122° 59.543' W
Dip Site	Lake Pillsbury Dip	39° 25.744' N	122° 57.134' W
Dip Site	Lightning Dip	39° 57.604' N	123° 11.393' W
Dip Site	Lily Dip TYPE 2 LONGLINE ONLY	39° 33.484' N	123° 10.248' W
Dip Site	Long Dip	39° 50.251' N	123° 11.227' W
Dip Site	North Dip	40° 10.560' N	122° 33.960' W
Dip Site	Oak Dip	39° 23.026' N	123° 12.026' W
Dip Site	Plaskett Dip	39° 43.541' N	122° 50.517' W
Dip Site	Prairie Dip (Power Fill Only)	39° 59.110' N	123° 13.220' W
Dip Site	Rattlesnake MRB	40° 28.050' N	123° 10.606' W
Dip Site	River Dip	39° 33.378' N	123° 17.120' W
Dip Site	Runway Dip	39° 37.870' N	123° 10.109' W
Dip Site	Shed Dip	40° 11.310' N	122° 46.883' W
Dip Site	Shrimp Dip	39° 57.777' N	122° 58.134' W
Dip Site	Snag Dip	39° 40.352' N	123° 11.943' W
Dip Site	Sock Dip	39° 46.177' N	123° 5.871' W
Dip Site	Sunflower Dip	40° 04.510' N	122° 35.620' W
Dip Site	Tin Dip	39° 43.732' N	123° 3.828' W
Dip Site	Tractor Dip	40° 0.310' N	123° 20.740' W
Dip Site	Tree Dip	40° 11.750' N	122° 29.951' W
Dip Site	Wildwood Dip	40° 23.113' N	122° 03.883' W
Dip Site	Windmill Dip	40° 04.470' N	122° 41.730' W
Dip Site	Wire Dip	40° 12.567' N	123° 30.597' W
Helibase	Eel River Helibase	40° 8.253' N	123° 49.521' W
Helibase	Kneeland Helibase	40° 43.140' N	123° 55.631' W
Helibase	Willits Helibase	39° 27.153' N	123° 22.399' W
Helispot	Barlow Campground/Helispot	40° 17.599' N	122° 30.146' W
Helispot	Dinsmore Helispot	40° 23.586' N	123° 12.034' W
Helispot	H-1	40° 3.270' N	123° 26.450' W
Helispot	H-105	40° 06.837' N	123° 04.965' W
Helispot	H-113	40° 23.675' N	123° 26.057' W
Helispot	H-130	40° 14.848' N	123° 03.727' W
Helispot	H-131	40° 15.325' N	123° 02.714' W
Helispot	H-132	40° 18.863' N	122° 07.066' W
Helispot	H-150	40° 21.777' N	122° 58.134' W
Helispot	H-170	40° 13.030' N	122° 55.709' W
Helispot	H-2	40° 08.581' N	123° 29.051' W
Helispot	H-200	39° 22.322' N	122° 32.047' W
Helispot	H-201	39° 39.221' N	122° 43.031' W
Helispot	H-202	39° 43.027' N	122° 52.131' W
Helispot	H-204	39° 50.777' N	122° 57.878' W
Helispot	H-207	39° 53.366' N	122° 53.880' W
Helispot	H-209	39° 47.499' N	122° 54.999' W
Helispot	H-210	39° 31.492' N	122° 50.755' W
Helispot	H-211	39° 34.406' N	122° 42.162' W
Helispot	H-212	39° 27.743' N	122° 44.430' W
Helispot	H-213	39° 30.779' N	122° 46.412' W
Helispot	H-215	40° 09.571' N	122° 46.321' W
Helispot	H-216	39° 09.918' N	122° 45.668' W
Helispot	H-217	39° 57.631' N	122° 45.413' W
Helispot	H-218	39° 55.042' N	122° 40.716' W
Helispot	H-219	39° 48.632' N	122° 37.690' W
Helispot	H-221	39° 27.360' N	122° 57.009' W
Helispot	Ruth Airport Helispot	40° 12.566' N	123° 17.922' W
Incident Command Post		39° 31.261' N	122° 12.017' W
Incident Command Post		40° 34.746' N	122° 21.744' W
Mobile Weather Unit	Alder Point	39° 48.446' N	122° 56.702' W
Mobile Weather Unit	Alder Springs	40° 11.181' N	123° 35.452' W
Mobile Weather Unit	Eagle Peak	39° 55.617' N	122° 38.517' W
Mobile Weather Unit	Eel River	39° 49.517' N	123° 04.951' W
Mobile Weather Unit	IRAWS 13	39° 32.396' N	122° 57.009' W
Mobile Weather Unit	IRAWS 14	40° 0.399' N	122° 2.455' W
Mobile Weather Unit	IRAWS 23	40° 24.263' N	123° 11.734' W
Mobile Weather Unit	IRAWS 25	40° 24.263' N	123° 10.790' W
Mobile Weather Unit	IRAWS 27	40° 12.398' N	122° 55.195' W
Mobile Weather Unit	IRAWS 31	40° 0.154' N	123° 14.999' W
Mobile Weather Unit	IRAWS 47	39° 43.712' N	123° 5.989' W
Mobile Weather Unit	Island Mtn	40° 2.709' N	123° 34.632' W
Mobile Weather Unit	Laytonville	39° 42.098' N	122° 29.143' W
Mobile Weather Unit	McGee's	40° 21.159' N	122° 35.086' W
Mobile Weather Unit	Mendocino Pass	39° 48.426' N	122° 56.674' W
Mobile Weather Unit	Monkey Rock	39° 32.419' N	122° 57.121' W
Mobile Weather Unit	Poonkinney West	39° 44.007' N	123° 18.337' W
Mobile Weather Unit	Portable	39° 18.514' N	122° 56.386' W
Mobile Weather Unit	Reynolds Highway	39° 26.757' N	123° 19.467' W
Mobile Weather Unit	Rodeo Valley	39° 40.119' N	122° 15.196' W
Mobile Weather Unit	Soda Creek	39° 25.499' N	122° 36.833' W
Mobile Weather Unit	Soldier Ridge	40° 06.487' N	122° 02.504' W
Mobile Weather Unit	Stonyford	39° 22.037' N	122° 34.373' W
Mobile Weather Unit	Thomes Creek	39° 51.253' N	122° 36.595' W
Mobile Weather Unit	Zenia	40° 12.274' N	123° 29.999' W
Repeater	CMD 1	39° 26.050' N	122° 41.596' W
Repeater	CMD 1	39° 50.772' N	122° 57.874' W
Repeater	CMD 2	39° 29.124' N	122° 43.944' W
Repeater	CMD 2	40° 26.524' N	122° 35.312' W
Repeater	CMD 3	39° 55.026' N	122° 40.241' W
Repeater	CMD 3	40° 15.670' N	123° 15.789' W
Repeater	CMD 4	39° 15.607' N	122° 42.908' W
Repeater	CMD 4	40° 20.745' N	123° 21.797' W
Repeater	CMD 6	39° 30.953' N	123° 05.766' W
Repeater	CMD8 T10	39° 48.509' N	122° 28.871' W
Repeater	CMD8 T10 / NIFC C2 T11	40° 7.199' N	123° 15.911' W
Repeater	CMD8 T12	39° 19.596' N	123° 16.249' W
Repeater	CMD8 T15	39° 30.956' N	123° 5.762' W
Repeater	Hayfork Bally	40° 39.534' N	123° 13.151' W
Repeater	Horse Ridge	40° 15.600' N	123° 15.784' W
Repeater	N Yolla Bolly Mtn	40° 11.212' N	122° 58.174' W
Repeater	NIFC C1 T11	39° 50.774' N	122° 57.880' W
Repeater	NIFC C2 T11	40° 5.500' N	123° 15.993' W
Repeater	NIFC C43 T11	39° 31.321' N	122° 56.203' W
Repeater	Picket Peak	40° 20.667' N	123° 21.684' W
Repeater	Tomhead	40° 08.216' N	122° 49.050' W
Retardant/Mud Pit	Dinsmore MRB	40° 29.627' N	123° 36.957' W
Retardant/Mud Pit	West MRB	39° 47.355' N	123° 11.872' W



Air Ops
August Complex
 CA-MNF-000753
 10/09/2020



- ✦ Aerial Hazard
- ⊙ Repeater
- ⊙ Zone Break
- ⊙ Completed Dozer Line
- FlightRoutes
- ⊙ Dip Site
- ⊙ Retardant/Mud Pit
- ⊙ Checkpoint
- ⊙ Temporary Flight Restriction
- Road
- ⊙ Helibase
- ⊙ Camp
- ⊙ Uncontrolled Fire Edge
- ⊙ Aviation Obstacle
- ⊙ Wildfire Daily Fire Perimeter
- ⊙ Helispot
- ⊙ Branch Break
- ⊙ Contained Line
- ⊙ Aviation Obstacle
- ⊙ Comms Plan Break Line
- ⊙ Incident Command Post
- ⊙ Division Break
- ⊙ Lake / Pond