

119°41'0"W 119°40'30"W 119°40'0"W 119°39'30"W 119°39'0"W 119°38'30"W



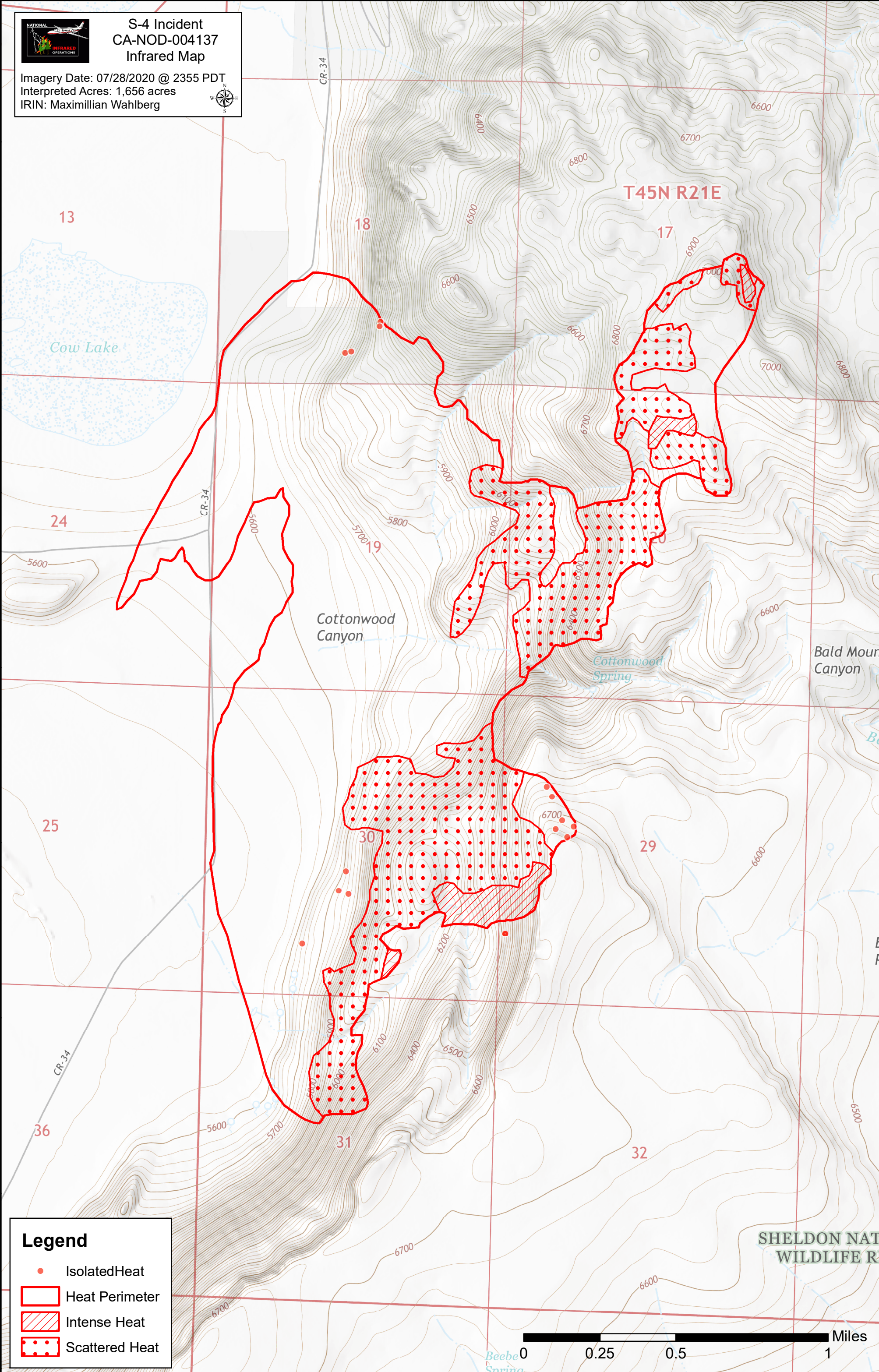
S-4 Incident CA-NOD-004137 Infrared Map

Imagery Date: 07/28/2020 @ 2355 PDT
Interpreted Acres: 1,656 acres
IRIN: Maximillian Wahlberg



41°49'30"N
41°49'0"N
41°48'30"N
41°48'0"N
41°47'30"N
41°47'0"N
41°46'30"N
41°46'0"N

41°49'30"N
41°49'0"N
41°48'30"N
41°48'0"N
41°47'30"N
41°47'0"N
41°46'30"N
41°46'0"N



Legend

- Isolated Heat
- Heat Perimeter
- Intense Heat
- Scattered Heat



SHELDON NAT
WILDLIFE R