

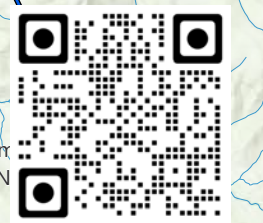
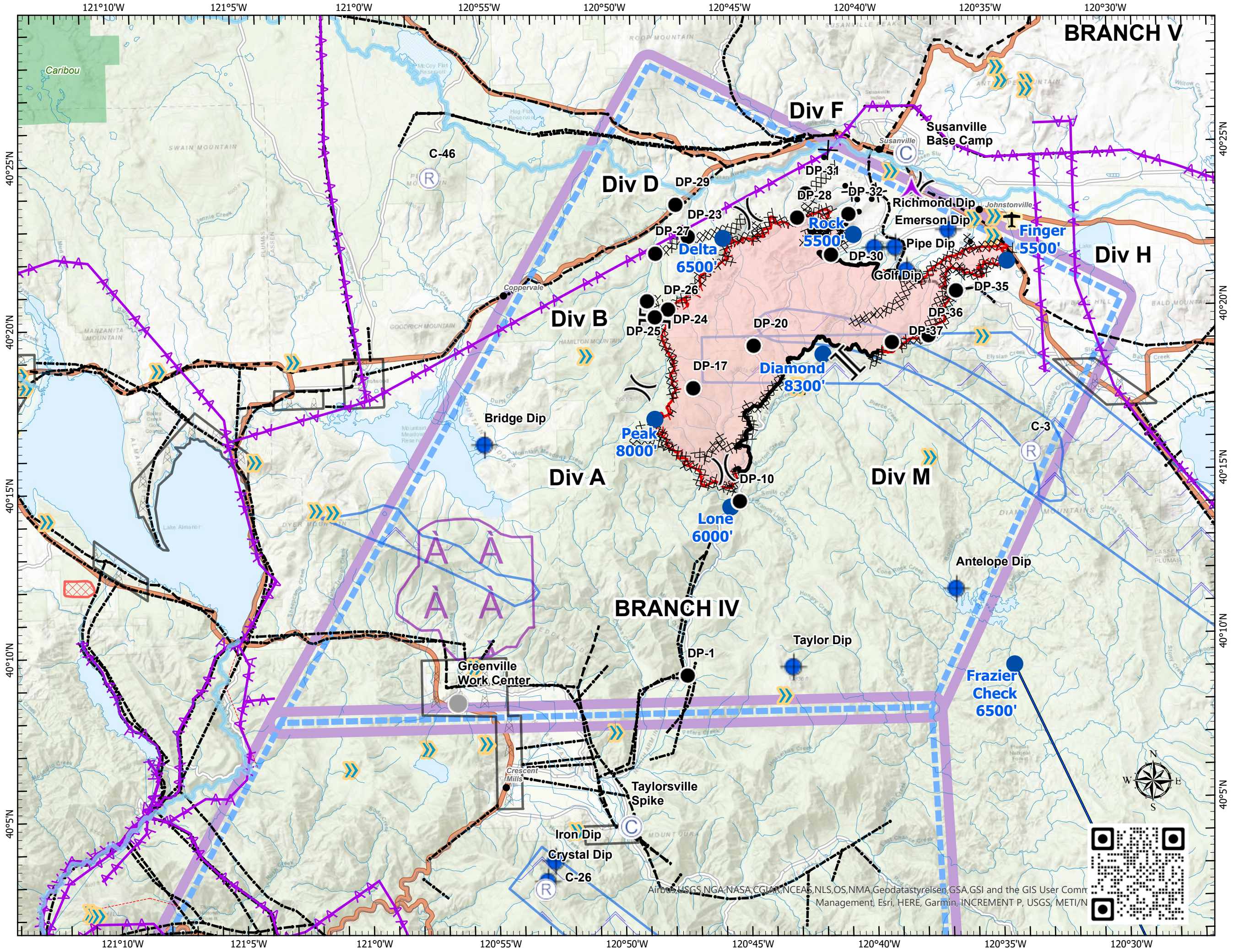
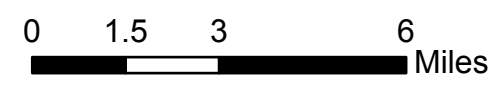
# Pilot Map

## Sheep Fire

### CA-PNF-001299

#### 8/31/2020

- Aerial Hazard
- Camp
- Dip Site
- Drop Point
- Repeater
- Other
- Division Break
- Branch Break
- Check Point
- Tower
- Uncontrolled Fire Edge
- Contained Line
- Completed Dozer Line
- Completed Hand Line
- Road as Completed Line
- Proposed Dozer Line
- Powerline
- Telephone wires
- Aerial Hazard
- Helicopter Routes North
- Aerobatic
- Congested area
- Hangglide/Paraglide
- Jettison
- MOA
- No Dipping
- No Fly Zone
- Powerline
- Turbulence
- Wildfire Daily Fire Perimeter
- Wilderness
- TFR



Airbus, USGS, NGA, NASA, CGIAR, NCEAS, NLS, OS, NMA, Geodatastyrelsen, GSA, GSI and the GIS User Community Management, Esri, HERE, Garmin, INCREMENT P, USGS, METI/N

Incident Name	Feature Category	Label	Lat	Long
Bear	Dip Site	Fowler Dip	39° 46.437' N	121° 0.317' W
Bear	Drop Point	DP-80	39° 56.554' N	121° 1.080' W
Bear	Drop Point	DP-81	39° 52.354' N	121° 2.734' W
Bear	Drop Point	DP-82	39° 52.420' N	121° 3.893' W
Bear	Drop Point	DP-83	39° 55.490' N	121° 4.136' W
Bear	Drop Point	DP-84	39° 52.750' N	121° 5.101' W
Bear	Drop Point	DP-86	39° 52.716' N	121° 6.514' W
Bear	Drop Point	DP-88	39° 50.579' N	121° 7.071' W
Bear	Drop Point	DP-90	39° 50.072' N	121° 11.030' W
Bear	Drop Point	DP-93	39° 51.703' N	121° 0.091' W
Bear	Drop Point	DP-94	39° 51.362' N	121° 0.653' W
Bear	Fire Station		39° 52.077' N	121° 10.399' W
Bear	Restricted Water Source	NO DRAFTING IN WILLOW CREEK	39° 51.072' N	121° 10.807' W
Bear	Restricted Water Source		39° 50.678' N	121° 10.395' W
Bear	Restricted Water Source		39° 50.696' N	121° 10.916' W
Bear	Restricted Water Source		39° 50.480' N	121° 11.156' W
Bear	Retardant/Mud Pit	Haskins Mobile Retardant Base	39° 52.129' N	121° 10.470' W
Bear	Safety Zone		39° 52.753' N	121° 5.089' W
Bear	Safety Zone		39° 51.277' N	121° 3.740' W
Bear	Safety Zone		39° 52.165' N	121° 1.882' W
Bear	Safety Zone		39° 50.755' N	121° 10.319' W
Bear	Water Source		39° 50.932' N	121° 10.259' W
Bear	Water Source		39° 50.681' N	121° 7.885' W
Claremont	Camp	Taylorville Spike	40° 4.510' N	120° 49.715' W
Claremont	Dip Site	Crystal Dip	40° 2.883' N	120° 53.081' W
Claremont	Dip Site	East Quincy Dip	39° 55.520' N	120° 52.720' W
Claremont	Dip Site	Gravel Dip	39° 51.414' N	120° 43.384' W
Claremont	Dip Site	Greenhorn Creek Dip	39° 57.485' N	120° 53.595' W
Claremont	Dip Site	McMorrow Pond Dip	39° 56.827' N	120° 59.485' W
Claremont	Dip Site	Poplar Dip	39° 50.253' N	120° 44.957' W
Claremont	Dip Site	River/Nelson Dip	39° 51.670' N	120° 51.270' W
Claremont	Dip Site	Sawmill Pond Dip	39° 56.532' N	120° 54.425' W
Claremont	Dip Site	Sloat Dip	39° 51.894' N	120° 43.563' W
Claremont	Dip Site	Williams Dip	39° 54.662' N	120° 48.713' W
Claremont	Dip Site	Z Dip	39° 51.560' N	120° 51.040' W
Claremont	Dip Site		39° 51.689' N	120° 43.963' W
Claremont	Drop Point	DP-40	39° 53.072' N	120° 54.874' W
Claremont	Drop Point	DP-41	39° 52.679' N	120° 56.463' W
Claremont	Drop Point	DP-42	39° 53.211' N	120° 57.453' W
Claremont	Drop Point	DP-44	39° 55.603' N	120° 52.972' W
Claremont	Drop Point	DP-45	39° 56.231' N	120° 51.730' W
Claremont	Drop Point	DP-46	39° 55.404' N	120° 50.053' W
Claremont	Drop Point	DP-50	39° 52.457' N	120° 51.812' W
Claremont	Drop Point	DP-51	39° 51.616' N	120° 50.999' W
Claremont	Drop Point	DP-55	39° 53.503' N	120° 47.086' W
Claremont	Drop Point	DP-56	39° 54.197' N	120° 45.100' W
Claremont	Drop Point	DP-57	39° 52.706' N	120° 45.634' W
Claremont	Drop Point	DP-58	39° 52.424' N	120° 44.404' W
Claremont	Drop Point	DP-59	39° 52.534' N	120° 43.770' W
Claremont	Drop Point	DP-61	39° 51.569' N	120° 43.667' W
Claremont	Drop Point	DP-62	39° 51.460' N	120° 41.320' W
Claremont	Fire Station		39° 54.320' N	120° 45.083' W
Claremont	Helispot	H-1 Sloat	39° 51.190' N	120° 43.720' W
Claremont	Helispot	H-2 Bray	39° 50.992' N	120° 50.131' W
Claremont	Incident Command Post	North Complex ICP	39° 56.346' N	120° 54.903' W
Claremont	Other	Greenville Work Center	40° 8.383' N	120° 56.488' W
Claremont	Repeater	C-10	39° 52.999' N	120° 56.753' W
Claremont	Repeater	C-26	40° 2.657' N	120° 53.170' W
Claremont	Repeater	C47	39° 43.076' N	121° 11.897' W
Claremont	Safety Zone		39° 51.899' N	120° 43.687' W
Claremont	Safety Zone		39° 51.391' N	120° 43.434' W
Claremont	Safety Zone		39° 50.995' N	120° 50.201' W
Claremont	Staging Area		39° 56.108' N	120° 54.869' W
Claremont	Water Source		39° 56.150' N	120° 51.972' W
Claremont	Water Source		39° 51.918' N	120° 43.699' W
Claremont	Water Source		39° 51.894' N	120° 43.554' W
Claremont	Water Source		39° 54.055' N	120° 57.376' W
Claremont	Water Source		39° 52.906' N	120° 57.665' W
Claremont	Water Source		39° 55.071' N	120° 57.971' W
Sheep	Aerial Hazard		40° 23.693' N	120° 37.933' W
Sheep	Camp	Susanville Base Camp	40° 24.836' N	120° 38.101' W
Sheep	Dip Site	Antelope Dip	40° 11.515' N	120° 36.583' W
Sheep	Dip Site	Bridge Dip	40° 16.242' N	120° 55.199' W
Sheep	Dip Site	Emerson Dip	40° 21.972' N	120° 38.653' W
Sheep	Dip Site	Golf Dip	40° 21.977' N	120° 39.484' W
Sheep	Dip Site	Pipe Dip	40° 21.253' N	120° 38.221' W
Sheep	Dip Site	Richmond Dip	40° 22.465' N	120° 36.526' W
Sheep	Dip Site	Taylor Dip	40° 9.250' N	120° 43.135' W
Sheep	Drop Point	DP-1	40° 9.075' N	120° 47.345' W
Sheep	Drop Point	DP-10	40° 14.356' N	120° 45.095' W
Sheep	Drop Point	DP-17	40° 17.835' N	120° 46.833' W
Sheep	Drop Point	DP-20	40° 19.084' N	120° 44.387' W
Sheep	Drop Point	DP-23	40° 22.455' N	120° 46.908' W
Sheep	Drop Point	DP-24	40° 20.028' N	120° 48.286' W
Sheep	Drop Point	DP-25	40° 20.255' N	120° 47.764' W
Sheep	Drop Point	DP-26	40° 20.527' N	120° 48.591' W
Sheep	Drop Point	DP-27	40° 21.972' N	120° 48.203' W
Sheep	Drop Point	DP-28	40° 22.955' N	120° 42.513' W
Sheep	Drop Point	DP-29	40° 23.448' N	120° 47.361' W
Sheep	Drop Point	DP-30	40° 21.801' N	120° 41.216' W
Sheep	Drop Point	DP-31	40° 23.700' N	120° 42.160' W
Sheep	Drop Point	DP-32	40° 23.031' N	120° 40.479' W
Sheep	Drop Point	DP-35	40° 20.612' N	120° 36.269' W
Sheep	Drop Point	DP-36	40° 19.273' N	120° 37.413' W
Sheep	Drop Point	DP-37	40° 19.087' N	120° 38.871' W
Sheep	Repeater	C-3	40° 15.652' N	120° 33.453' W
Sheep	Repeater	C-46	40° 24.428' N	120° 57.151' W
Sheep	Retardant/Mud Pit	Gravel Mobile Retardant Base	39° 51.372' N	120° 43.363' W
Sheep	Safety Zone		40° 18.625' N	120° 39.392' W
Sheep	Safety Zone		40° 18.613' N	120° 39.061' W